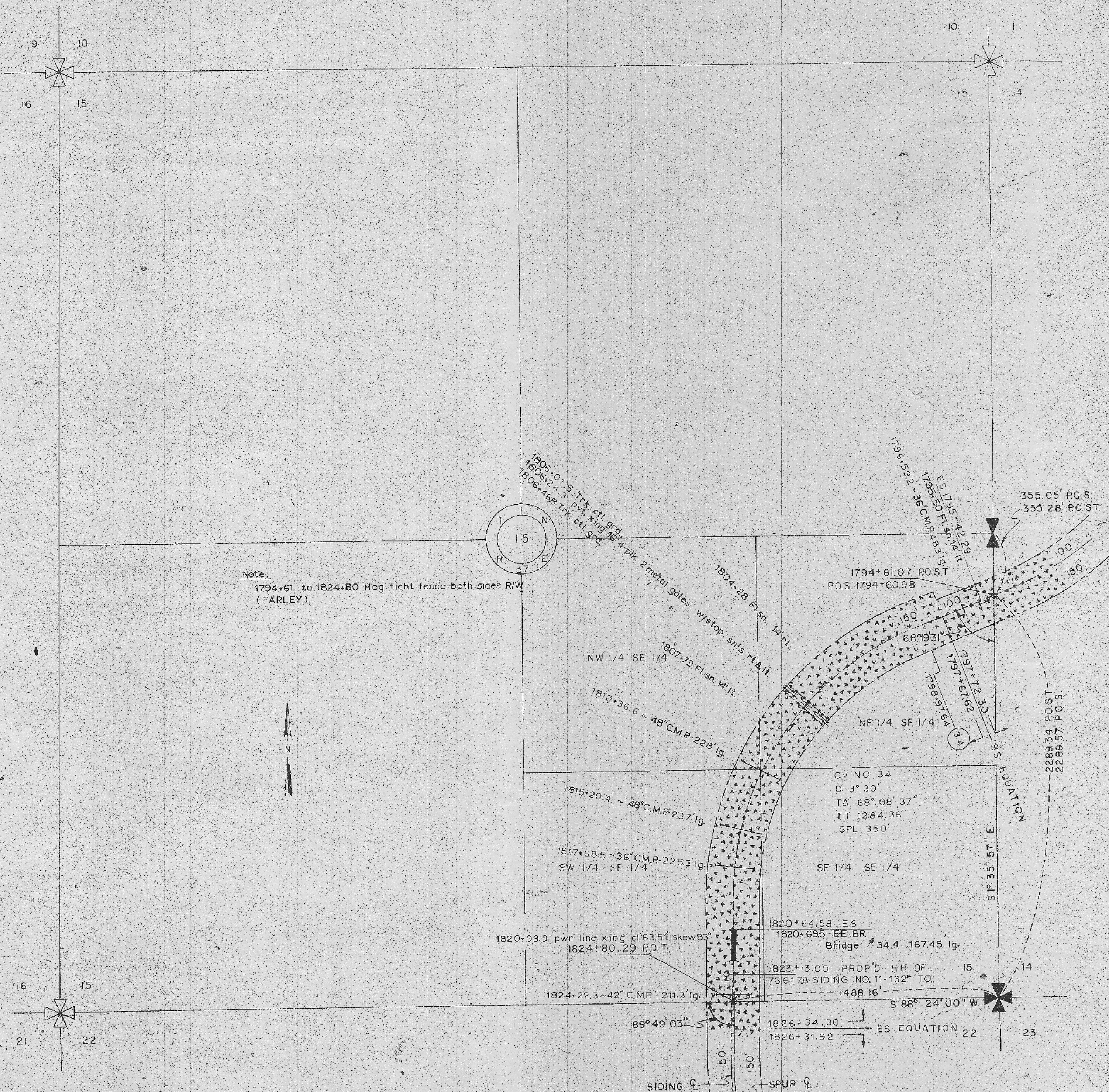


SCALE: 1" = 400'



I, DAVID W. McCULLOUGH A REGISTERED LAND SURVEYOR, IN THE STATE OF MONTANA  
HEREBY CERTIFY THAT BETWEEN THE DATES OF OCT. 30, 1972 AND NOV. 10, 1972 A CAREFUL AND  
ACCURATE SURVEY OF THE ABOVE DESCRIBED TRACT OF LAND WAS MADE UNDER MY DIRECTION AND SUPERVISION  
AND THAT THE DISTANCES AND COURSES AS SHOWN ARE CORRECT TO THE BEST OF MY KNOWLEDGE AND BELIEF.

DAIRY W. McCULLOUGH  
REGISTRATION NUMBER 823 ES  
HURLBUT, KERSICH & McCULLOUGH  
Consulting Engineers, 937 Grand Avenue  
Billings, Montana 59102