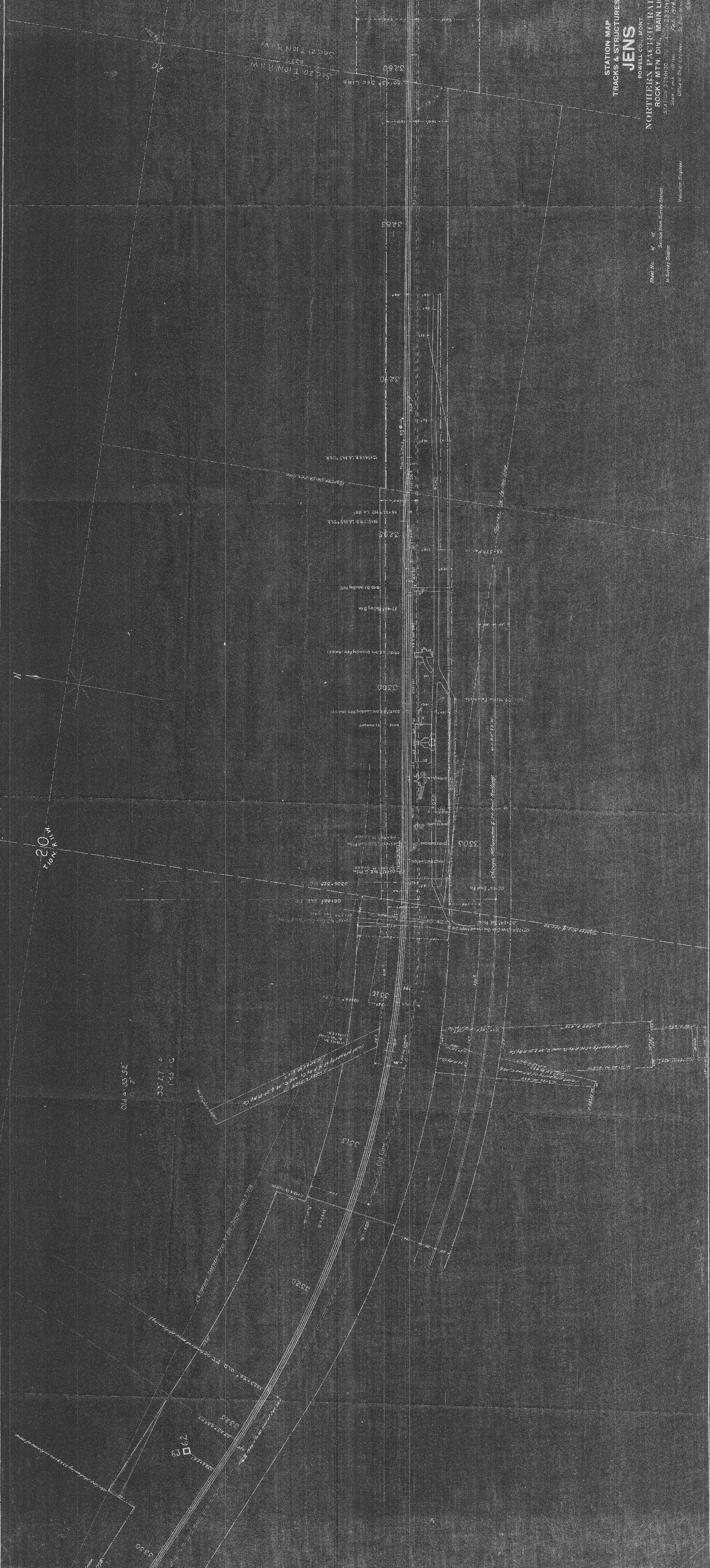


STATION MAP TRACKS & STRUCTURES JENS

POWELL CO., MONT.
NORTHERN PACIFIC RAILWAY
ROCKY MOUNTAIN DIV., MAIN LINE

Scale: 1 inch = 40 feet
Office of Chief Engineer, Great Northern Railway

Sheet No. 4 of Section from Survey Station 10 Survey Station
Validation Engineer



20' 110' N.P.R.

0144-3352

3327 A
115 C

3320

3315

3310

3305