

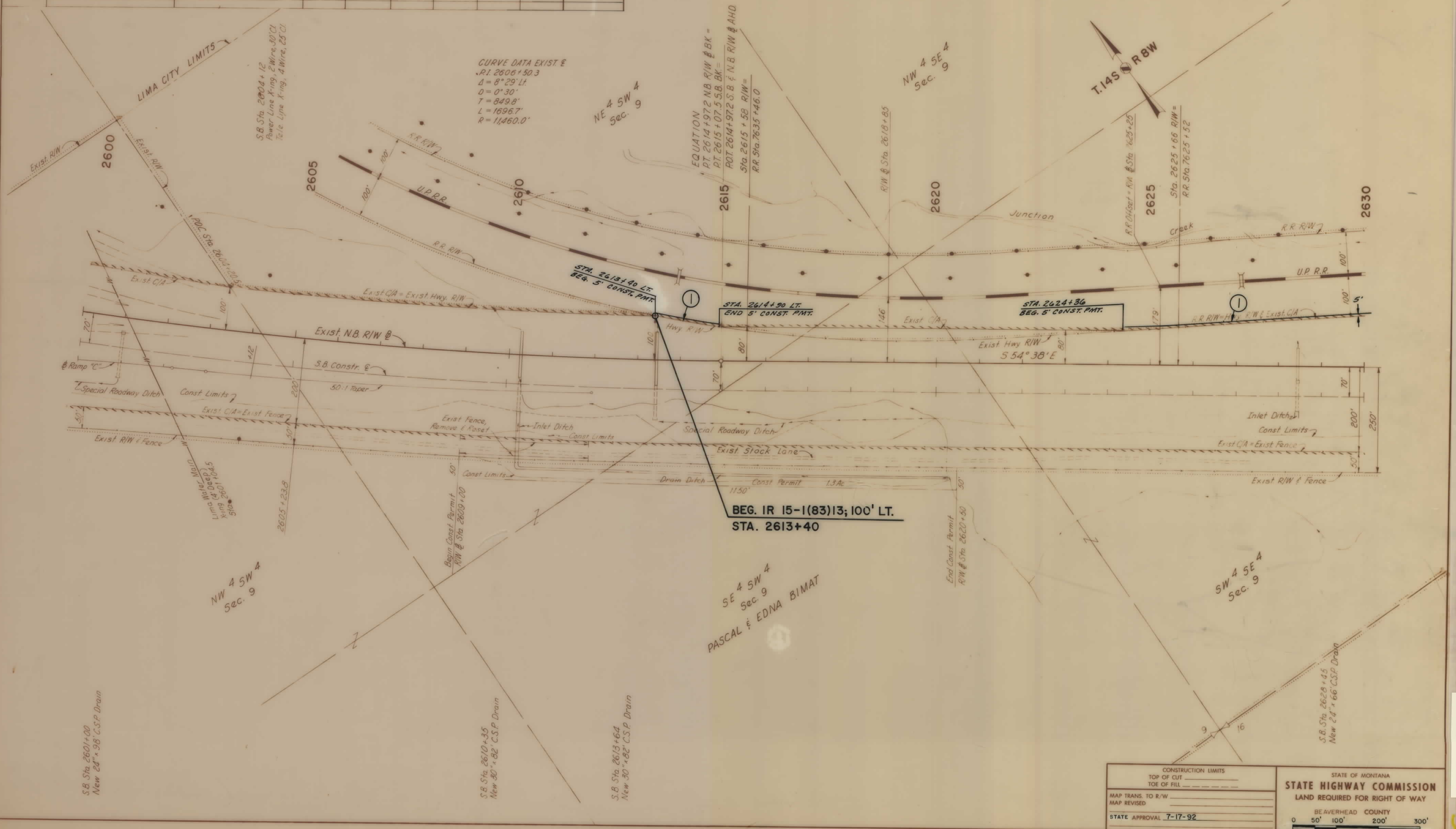
PLANS
NOT
TO
SCALE

OWNERSHIPS

PARCEL	NAME	ADDRESS	TOTAL ACREAGE	GROSS TAKE ACREAGE	P. T. W. ACREAGE	NET TAKE ACREAGE	REMAINDER		CONST. PMT. AREA
							LEFT	RIGHT	
I	UNION PACIFIC RAILROAD	SEE SHEET 4							

FED. ROAD DIST. NO.	STATE	FED. AID PROJECT NUMBERS		STATE NO.	SHEET NO.	TOTAL SHEETS
8	MONT.	CONST. NO.	R/W NO.		1	4
			IR 15-1(83)13			

LIMA SOUTH



CURVE DATA EXIST. @
 P.I. 2606+50.3
 $\Delta = 8^{\circ}29'11''$
 $D = 0^{\circ}30'$
 $T = 849.8'$
 $L = 1696.7'$
 $R = 11,460.0'$

EQUATION
 PT. 2614+97.2 NB. R/W @ BK =
 PT. 2615+07.5 SB. BK =
 POT. 2614+97.2 S.B. @ N.B. R/W @ AHD
 Sta. 2615 + SB. R/W =
 RR. Sta. 7635 + 46.0

**BEG. IR 15-1(83)13; 100' LT.
 STA. 2613+40**

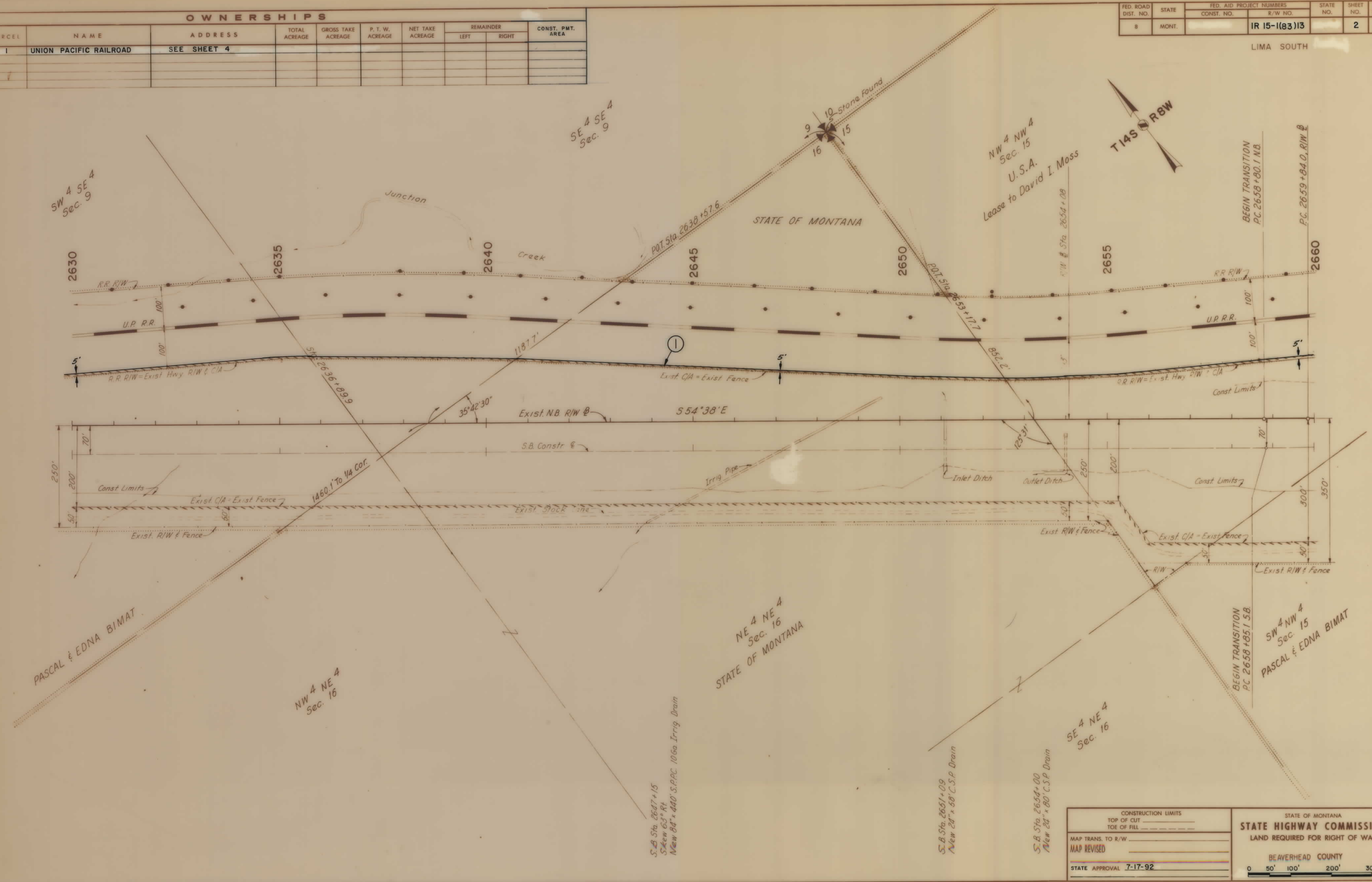
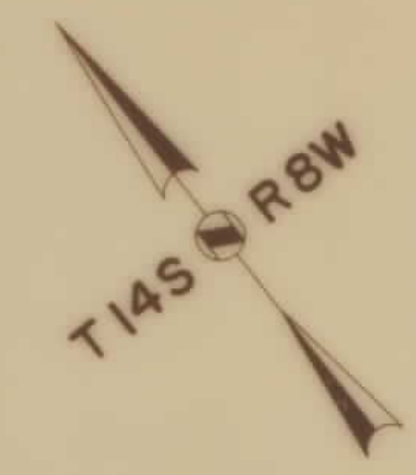
CONSTRUCTION LIMITS TOP OF CUT TOE OF FILL	STATE OF MONTANA STATE HIGHWAY COMMISSION LAND REQUIRED FOR RIGHT OF WAY BEAVERHEAD COUNTY
MAP TRANS. TO R/W MAP REVISED	STATE APPROVAL 7-17-92

OWNERSHIPS

PARCEL	NAME	ADDRESS	TOTAL ACREAGE	GROSS TAKE ACREAGE	P. T. W. ACREAGE	NET TAKE ACREAGE	REMAINDER		CONST. PMT. AREA
							LEFT	RIGHT	
1	UNION PACIFIC RAILROAD	SEE SHEET 4							

FED. ROAD DIST. NO.	STATE	FED. AID PROJECT NUMBERS		STATE NO.	SHEET NO.	TOTAL SHEETS
		CONST. NO.	R/W NO.			
8	MONT.		IR 15-1(83)13		2	4

LIMA SOUTH



CONSTRUCTION LIMITS		STATE OF MONTANA	
TOP OF CUT	-----	STATE HIGHWAY COMMISSION	
TOE OF FILL	-----		
MAP TRANS. TO R/W		LAND REQUIRED FOR RIGHT OF WAY	
MAP REVISED		BEAVERHEAD COUNTY	
STATE APPROVAL 7-17-92		0 50' 100' 200' 300'	

IR 15-1(83)13 SH-T 2 OF 4

OWNERSHIPS

PARCEL	NAME	ADDRESS	TOTAL ACRES	GROSS TAKE ACRES	P. T. W. ACRES	NET TAKE ACRES	REMAINDER		CONT. PMT. AREA
							LEFT	RIGHT	
I	UNION PACIFIC RAILROAD	SEE SHEET 4							

FED. ROAD DIST. NO.	STATE	FED. AID PROJECT NUMBERS		STATE NO.	SHEET NO.	TOTAL SHEETS
		CONST. NO.	R/W NO.			
8	MONT.		IR 15-1(83)13		3	4

LIMA SOUTH

CURVE DATA EXIST. E
 P.I. 2678+06.2
 Δ = 35°17'14"
 D = 1°00'
 T = 1822.2'
 L = 3528.3'
 R = 5730.0'

NE 4 NW 4
 Sec. 15
 U.S.A.
 Lease to David I. Moss

T145 R8W

Snowline Grazing Assoc

NW 4 NW 4
 Sec. 15

SW 4 NW 4
 Sec. 15
 PASCAL & EDNA BIMAT

SE 4 NW 4
 Sec. 15
 Snowline Grazing Assoc.

SW 4 NE 4
 Sec. 15

NW 4 SE 4
 Sec. 15

NE 4 SW 4
 Sec. 15

(A)	(B)	(C)	(D)
PI: 3173.2	PI: 16+29.0	PI: 10+84.4	PI: 14+80.3
Δ = 54°00'	Δ = 170°	Δ = 115°59'	Δ = 10°
D = 16°51'11"	D = 63°40'	D = 58°29'35"	D = 9°
T = 173.2'	T = 1028.6'	T = 157'	T = 125.3'
L = 320.4'	L = 267'	L = 198.6'	L = 250'
R = 390'	R = 90'	R = 98.1'	R = 1932.5'

CONSTRUCTION LIMITS	
TOP OF CUT	_____
TOE OF FILL	_____
MAP TRANS. TO R/W	_____
MAP REVISED	_____
STATE APPROVAL	7-17-92

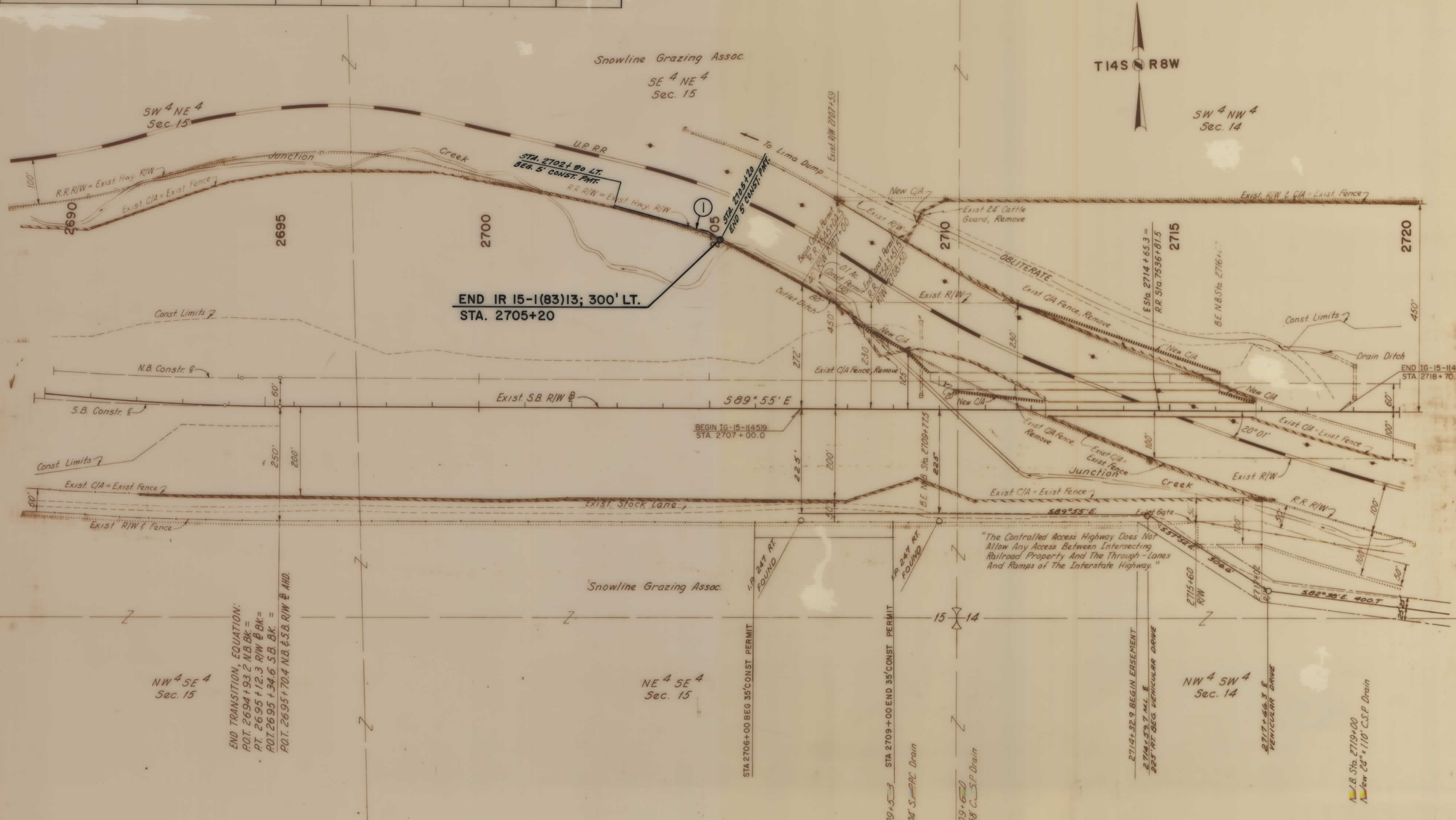
STATE OF MONTANA
STATE HIGHWAY COMMISSION
 LAND REQUIRED FOR RIGHT OF WAY
 BEAVERHEAD COUNTY
 0 50' 100' 200' 300'

OWNERSHIPS

PARCEL	NAME	ADDRESS	TOTAL ACREAGE	GROSS TAKE ACREAGE	P. T. W. ACREAGE	NET TAKE ACREAGE	REMAINDER		CONST. PMT. AREA
							LEFT	RIGHT	
1	UNION PACIFIC RAILROAD								0.71 AC.

FED. ROAD DIST. NO.	STATE	FED. AID PROJECT NUMBERS		STATE NO.	SHEET NO.	TOTAL SHEETS
		CONST. NO.	R/W NO.			
8	MONT.		IR 15-1(83)13		4	4

LIMA SOUTH



**END IR 15-1(83)13; 300' LT.
STA. 2705+20**

"The Controlled Access Highway Does Not Allow Any Access Between Intersecting Railroad Property And The Through-Lanes And Ramps of The Interstate Highway"

END TRANSITION, EQUATION:
 P.O.T. 2694+93.2 N.B. BK =
 P.T. 2695+12.3 R/W & BK =
 P.O.T. 2695+134.6 S.B. BK =
 P.O.T. 2695+70.4 N.B. & S.B. R/W & AHD.

CONSTRUCTION LIMITS TOP OF CUT _____ TOE OF FILL _____	STATE OF MONTANA STATE HIGHWAY COMMISSION LAND REQUIRED FOR RIGHT OF WAY
MAP TRANS. TO R/W _____ MAP REVISED _____	BEAVERHEAD COUNTY
STATE APPROVAL 7-17-92	0 50' 100' 200' 300'