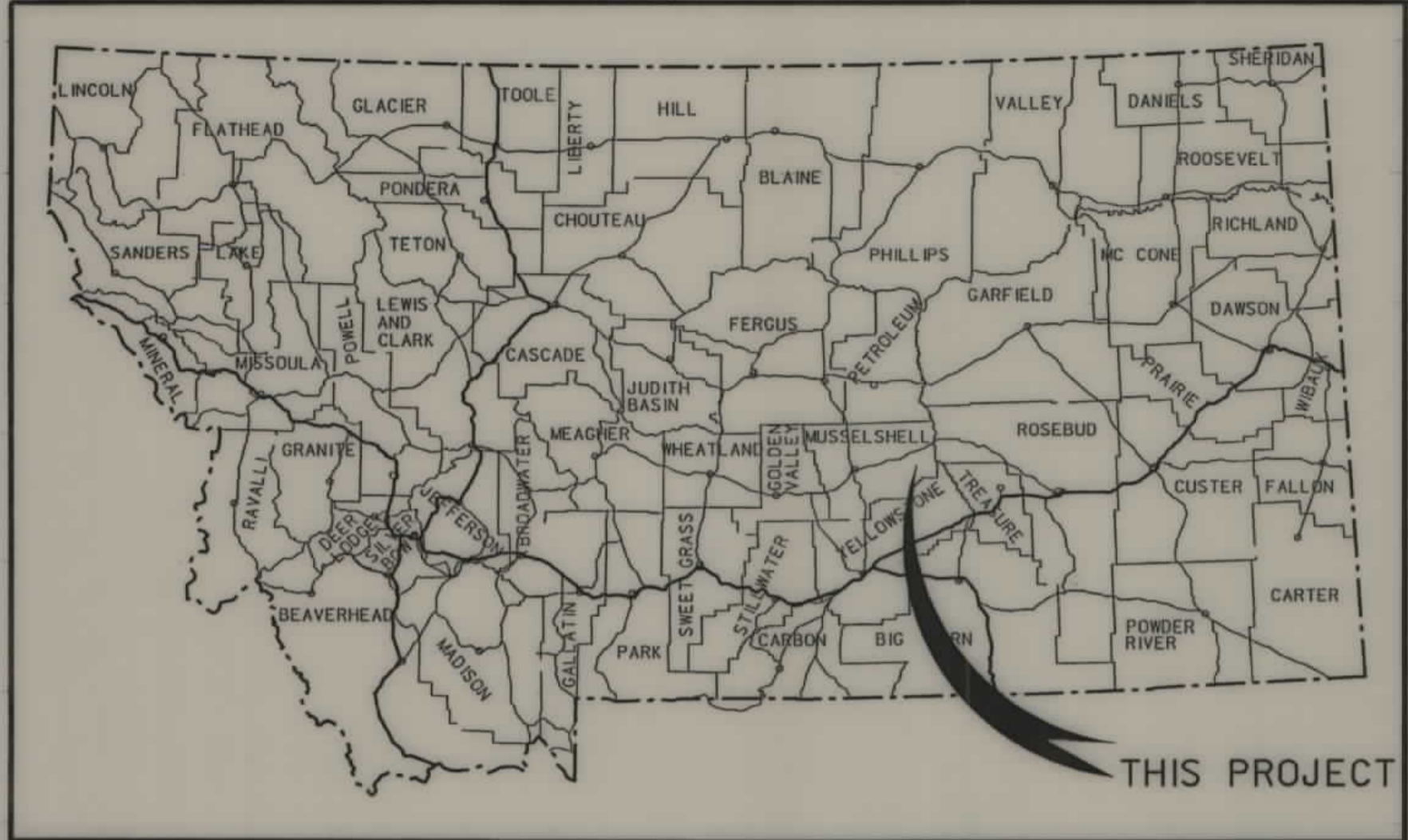


**PLANS
NOT
TO
SCALE**

STATE	RIGHT OF WAY ID.	SHEET NO.	TOTAL SHEETS
MONTANA	STPS 310-2(6)26	1	19
PROJECT NUMBER 2974-006			
MUSSELSHELL CO. LINE - NW			

MONTANA DEPARTMENT OF TRANSPORTATION

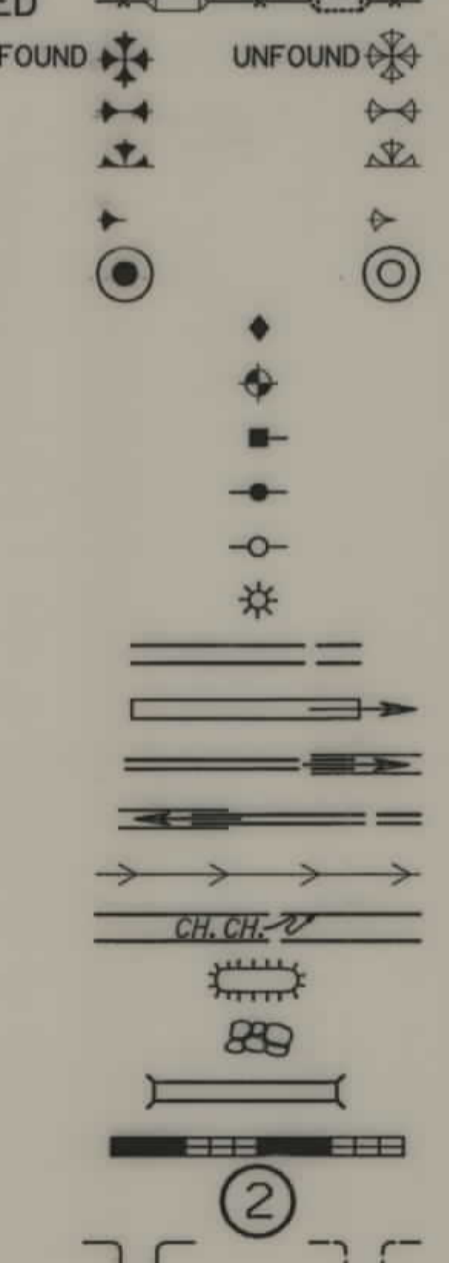


RIGHT OF WAY PLAN OF FEDERAL AID PROJECT STPS 310-2(6)26 MUSSELSHELL CO. LINE - NW MUSSELSHELL & YELLOWSTONE COUNTIES

11.5 Kilometers

CONVENTIONAL SIGNS

- PROPOSED RIGHT OF WAY LINE
- EXISTING RIGHT OF WAY LINE
- RAILROAD RIGHT OF WAY LINE
- RIGHT OF WAY BASELINE
- STK'D CENTERLINE
- SECTION LINE
- OWNERSHIP BOUNDARY
- FULL ACCESS CONTROL
- LIMITED ACCESS CONTROL
- EXISTING ACCESS CONTROL
- PRESENT TRAVELED WAY (P.T.W.)
- FENCE LINE
- EXISTING GUARDRAIL
- PROPOSED GUARDRAIL
- GATE IN FENCE
- CATTLE GUARD: EXIST. - PROPOSED
- SECTION CORNER
- 1/4 SECTION CORNER
- CLOSING CORNER
- MEANDER CORNER
- CENTER OF SECTION
- RIGHT OF WAY MONUMENT
- PROPERTY CORNER PIN
- POWER POLE IN PLACE
- TELEPHONE POLE IN PLACE
- TELEGRAPH POLE IN PLACE
- LIGHT POLE
- PROPOSED CULVERT
- EXISTING CULVERT
- OUTLET DITCH
- INLET DITCH
- EXISTING DITCH
- CHANNEL CHANGES
- DITCH BLOCK
- RIPRAP
- BRIDGES
- RAILROADS
- PARCEL NUMBERS
- APPROACH: EXIST.- PROPOSED

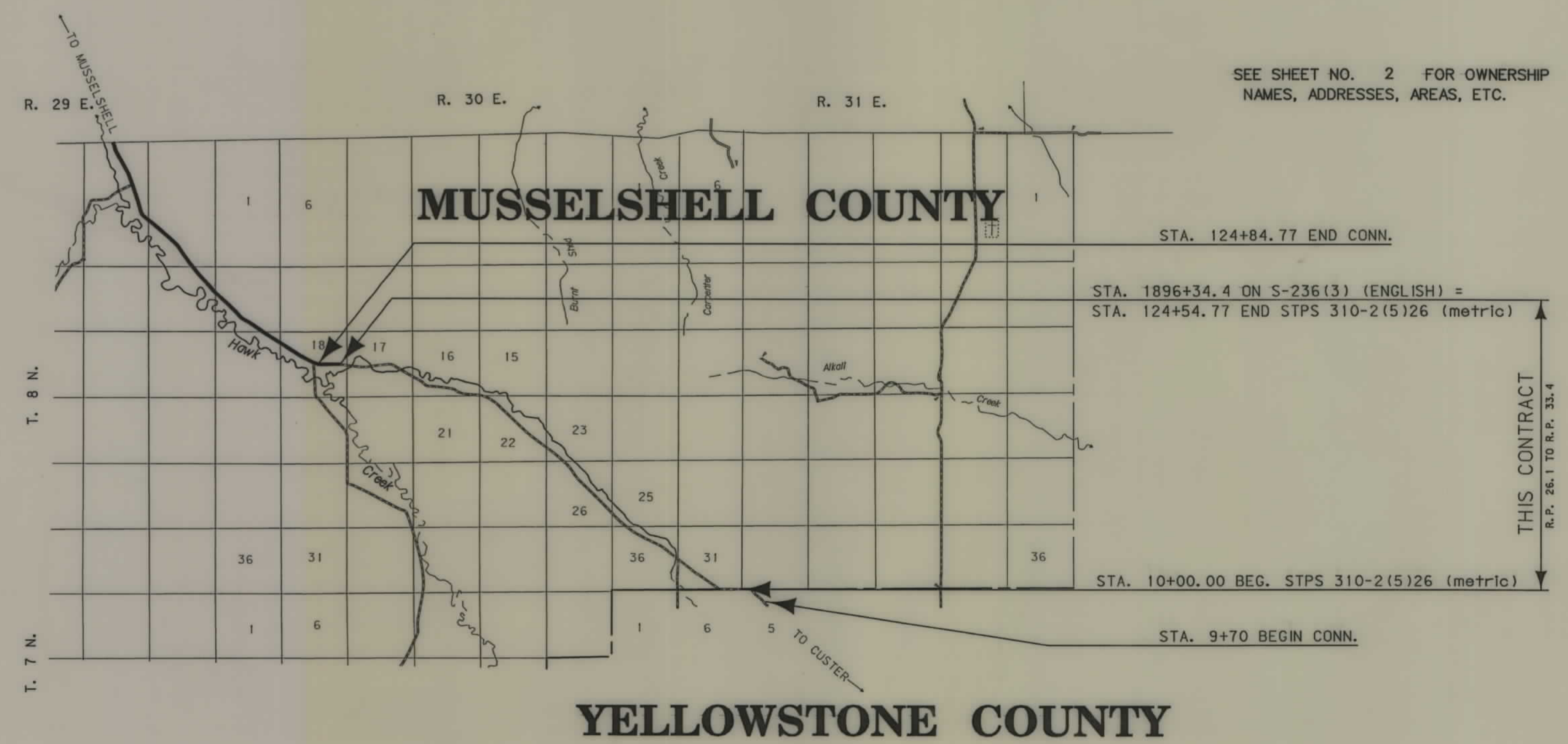


ASSOCIATED PROJECT ID.
STPS 310-2(3)26 P.E.

RELATED PROJECTS
S-236(3)

FHWAMDT APPROVAL 9-5-02
MAP REVISED

SEE SHEET NO. 2 FOR OWNERSHIP NAMES, ADDRESSES, AREAS, ETC.



THIS CONTRACT R.P. 26.1 TO R.P. 33.4

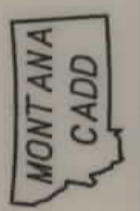
GRID STATE PLANE COORDINATES

THIS IS A STATE PLANE COORDINATE PROJECT. ALL DIMENSIONS, DISTANCES AND AREAS ON THIS PROJECT ARE GRID, EXCEPT FOR THE EXISTING R/W WIDTH DIMENSION, WHICH IS RECORD. THE COMBINATION SCALE FACTOR IS 0.99928695

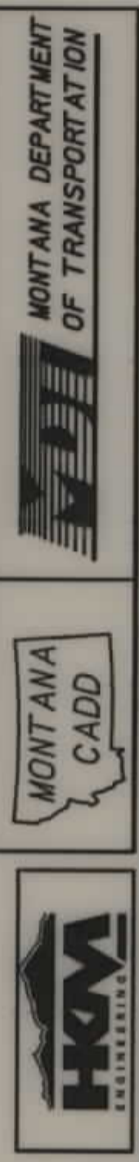
NOTES: 1. ALL MEASUREMENTS ARE METRIC EXCEPT AS NOTED



RDROW



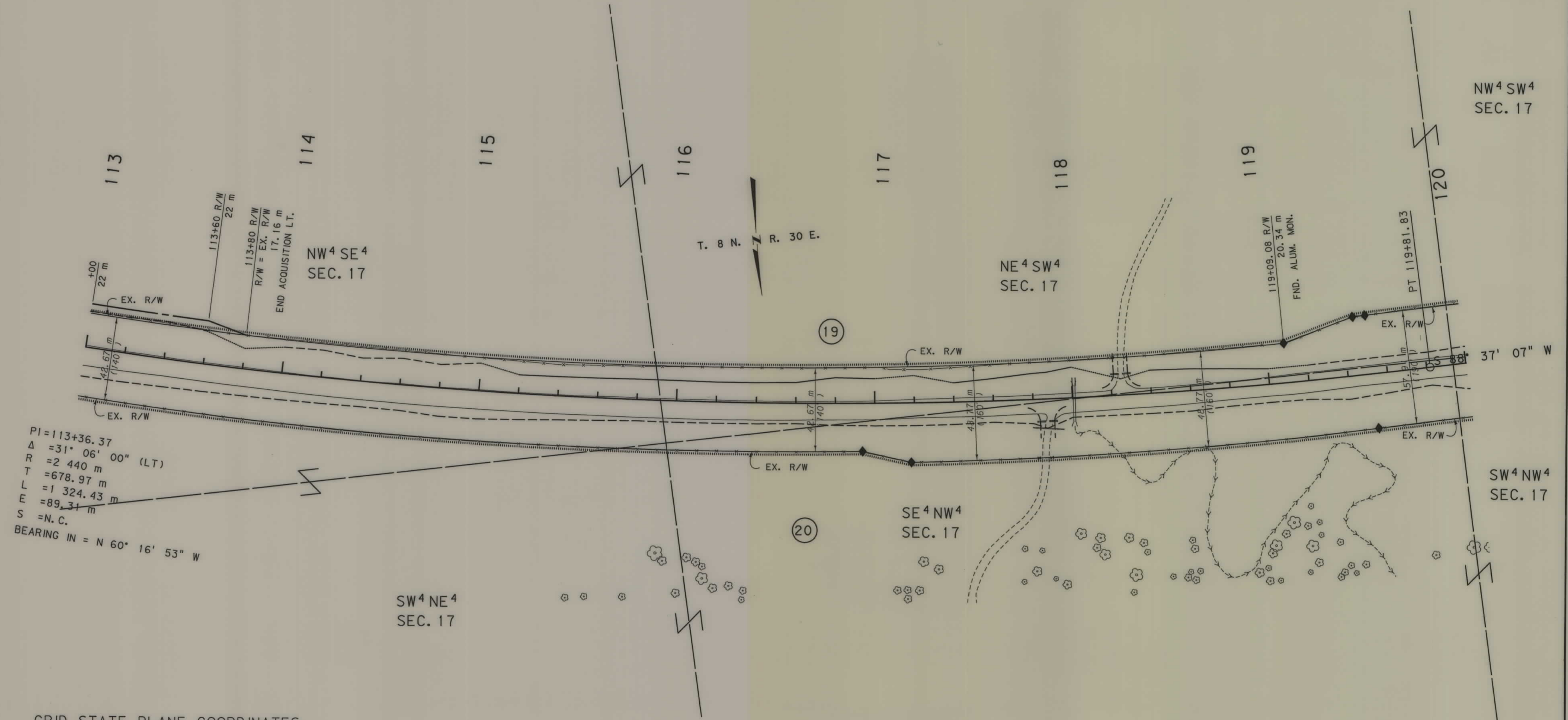
3
2
1



SEE SHEET NO. 2 FOR OWNERSHIP NAMES, ADDRESSES, AREAS, ETC.

STATE	RIGHT OF WAY ID.	SHEET NO.	TOTAL SHEETS
MONTANA	STPS 310-2(6)26	18	19
PROJECT NUMBER 2974-006			
MUSSELSHELL CO. LINE - NW			

RDROW



GRID STATE PLANE COORDINATES

THIS IS A STATE PLANE COORDINATE PROJECT. ALL DIMENSIONS, DISTANCES AND AREAS ON THIS PROJECT ARE GRID, EXCEPT FOR THE EXISTING R/W WIDTH DIMENSION, WHICH IS RECORD. THE COMBINATION SCALE FACTOR IS 0.99928695

FOR EXISTING R/W RETRACEMENT, SEE CERTIFICATE OF SURVEY 2003-12

- NOTES:
1. ALL MEASUREMENTS ARE METRIC EXCEPT AS NOTED
 2. THE PROPOSED R/W LINE WHERE A SPIRAL CURVE TRANSITION IS USED IS A CHORD RATHER THAN A CONCENTRIC CURVE.
 3. THE ENGLISH AREAS ARE FOR INFORMATIONAL PURPOSES ONLY.
 4. ALL STATIONS AND OFFSETS FOR R/W BREAKS ARE IN REFERENCE TO THE R/W BASELINE.

BACKSLOPE LIMITS INCLUDE ROUNDING	CONSTRUCTION LIMITS:
	CUT SECTION TOE OF FILL
FHWA/DOT APPROVAL	9-5-02
MAP REVISED	

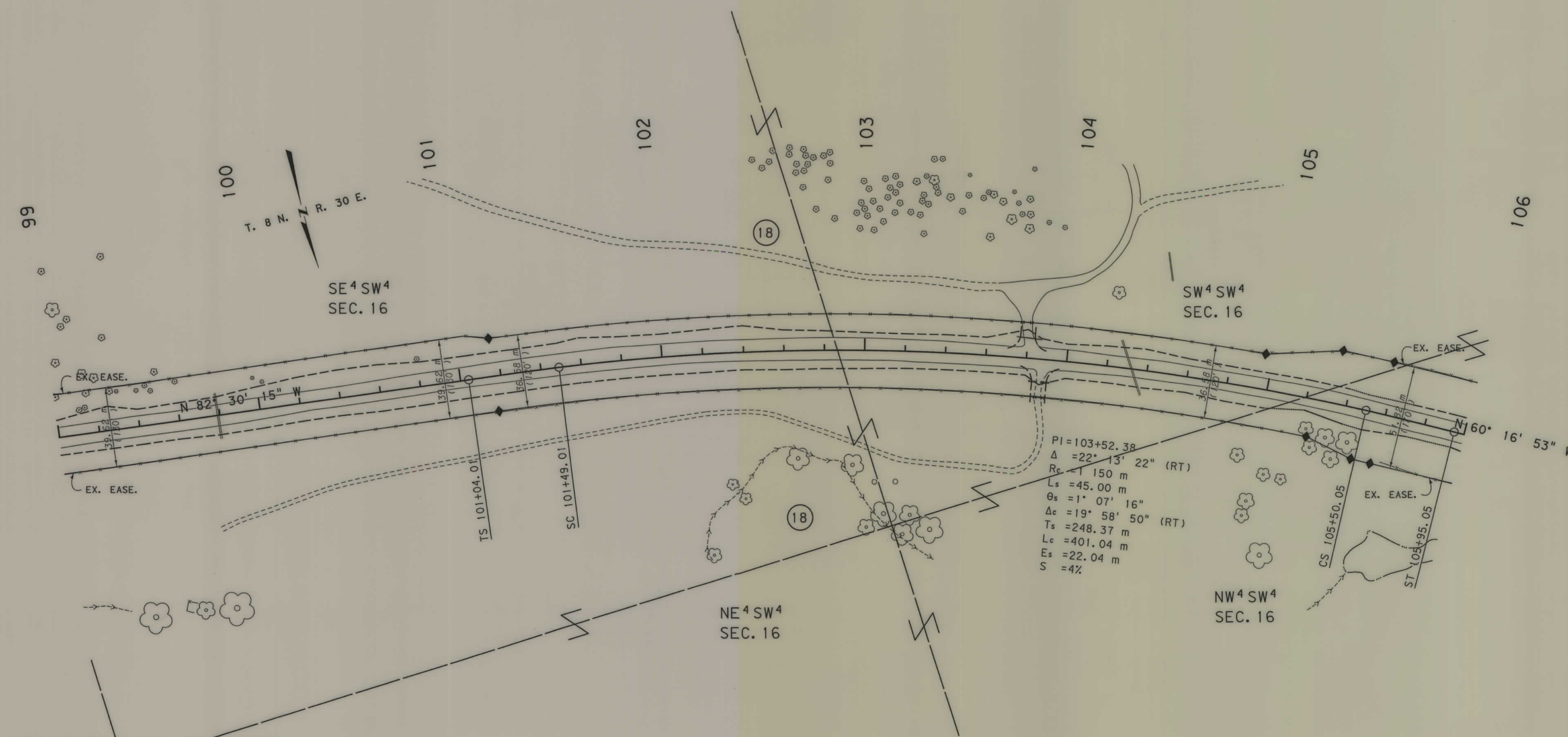
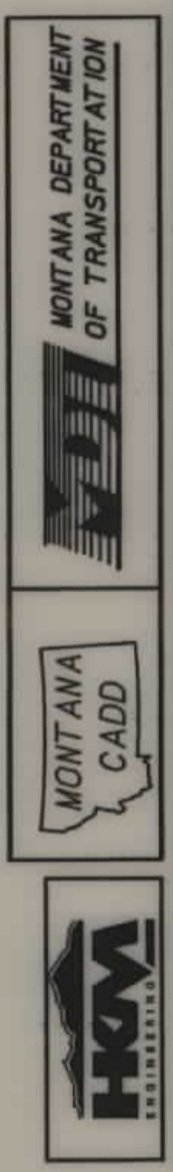
MONTANA
DEPARTMENT OF TRANSPORTATION

RIGHT OF WAY PLAN
MUSSELSHELL COUNTY
SCALE 1:1000

2974.rdw\inz06.dgn
 3/3/2004
 2:01:29 PM
 16 0679

STATE	RIGHT OF WAY ID.	SHEET NO.	TOTAL SHEETS
MONTANA	STPS 310-2(6)26	16	19
PROJECT NUMBER 2974-006			
MUSSELSHELL CO. LINE - NW			

SEE SHEET NO. 2 FOR OWNERSHIP NAMES, ADDRESSES, AREAS, ETC.



RDROW

GRID STATE PLANE COORDINATES

THIS IS A STATE PLANE COORDINATE PROJECT. ALL DIMENSIONS, DISTANCES AND AREAS ON THIS PROJECT ARE GRID, EXCEPT FOR THE EXISTING R/W WIDTH DIMENSION, WHICH IS RECORD. THE COMBINATION SCALE FACTOR IS 0.99928695

FOR EXISTING R/W RETRACEMENT, SEE CERTIFICATE OF SURVEY 2003-12

- NOTES:
1. ALL MEASUREMENTS ARE METRIC EXCEPT AS NOTED
 2. THE PROPOSED R/W LINE WHERE A SPIRAL CURVE TRANSITION IS USED IS A CHORD RATHER THAN A CONCENTRIC CURVE.
 3. THE ENGLISH AREAS ARE FOR INFORMATIONAL PURPOSES ONLY.
 4. ALL STATIONS AND OFFSETS FOR R/W BREAKS ARE IN REFERENCE TO THE R/W BASELINE.

BACKSLOPE LIMITS INCLUDE ROUNDING

CONSTRUCTION LIMITS:

CUT SECTION	TOP OF CUT
TOE OF FILL	DITCH BOTTOM

FHWA/DOT APPROVAL 9-5-02

MAP REVISED

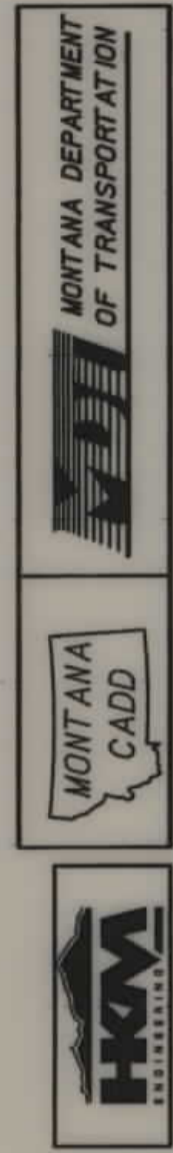
MONTANA DEPARTMENT OF TRANSPORTATION

RIGHT OF WAY PLAN
MUSSELSHELL COUNTY
SCALE 1:1000

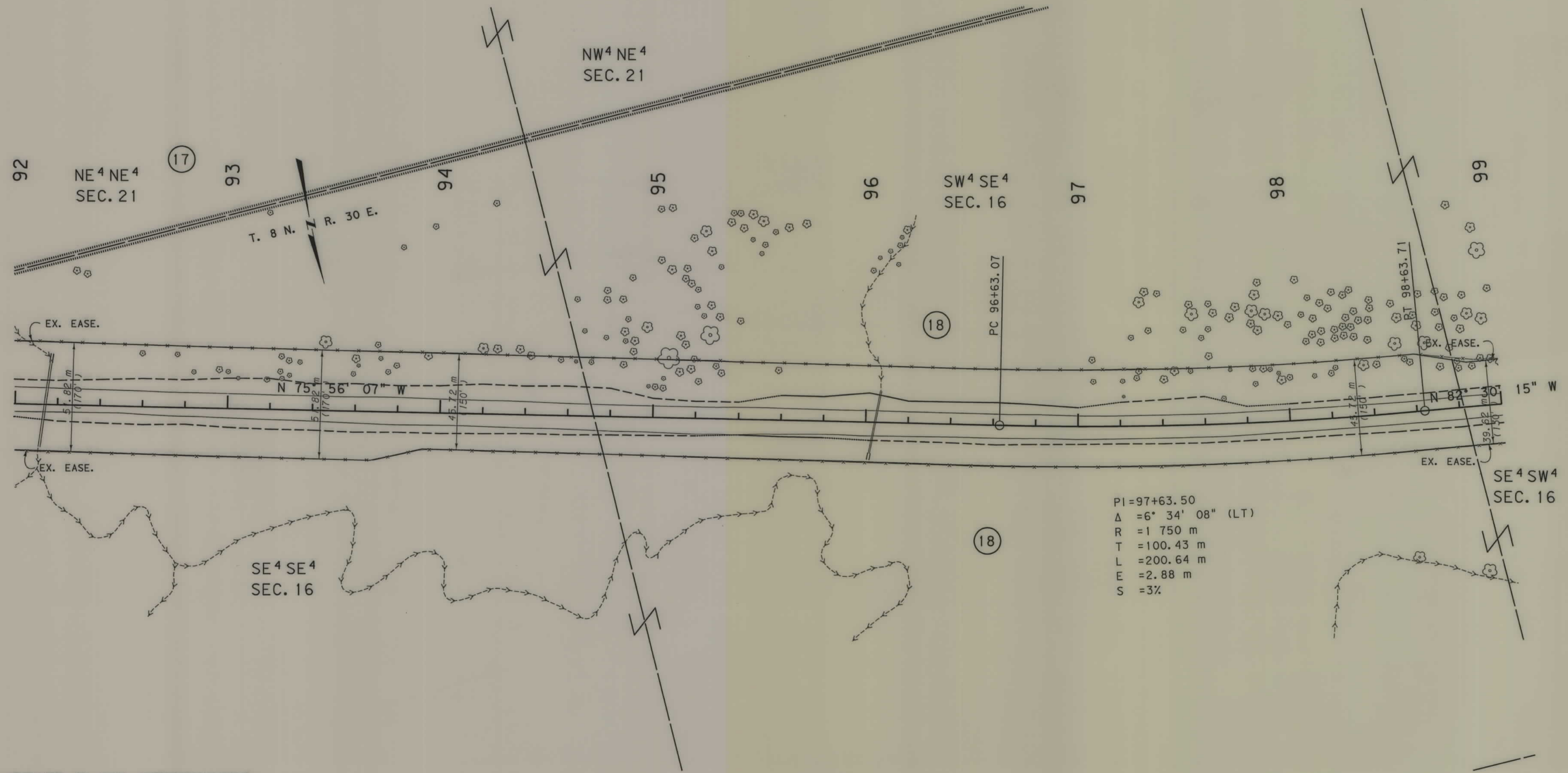
1 2974.rwb\mz05.dgn
3/31/2004
2:01:26 PM
3
1

STATE	RIGHT OF WAY ID.	SHEET NO.	TOTAL SHEETS
MONTANA	STPS 310-2(6)26	15	19
PROJECT NUMBER 2974-006		MUSSELSHELL CO. LINE - NW	

SEE SHEET NO. 2 FOR OWNERSHIP NAMES, ADDRESSES, AREAS, ETC.



RDROW



GRID STATE PLANE COORDINATES

THIS IS A STATE PLANE COORDINATE PROJECT. ALL DIMENSIONS, DISTANCES AND AREAS ON THIS PROJECT ARE GRID, EXCEPT FOR THE EXISTING R/W WIDTH DIMENSION, WHICH IS RECORD. THE COMBINATION SCALE FACTOR IS 0.99928695

- NOTES:
1. ALL MEASUREMENTS ARE METRIC EXCEPT AS NOTED
 2. THE PROPOSED R/W LINE WHERE A SPIRAL CURVE TRANSITION IS USED IS A CHORD RATHER THAN A CONCENTRIC CURVE.
 3. THE ENGLISH AREAS ARE FOR INFORMATIONAL PURPOSES ONLY.
 4. ALL STATIONS AND OFFSETS FOR R/W BREAKS ARE IN REFERENCE TO THE R/W BASELINE.

BACKSLOPE LIMITS INCLUDE ROUNDING	CONSTRUCTION LIMITS:
	CUT SECTION
	TOE OF FILL
FHWA/DOT APPROVAL	9-5-02
MAP REVISED	

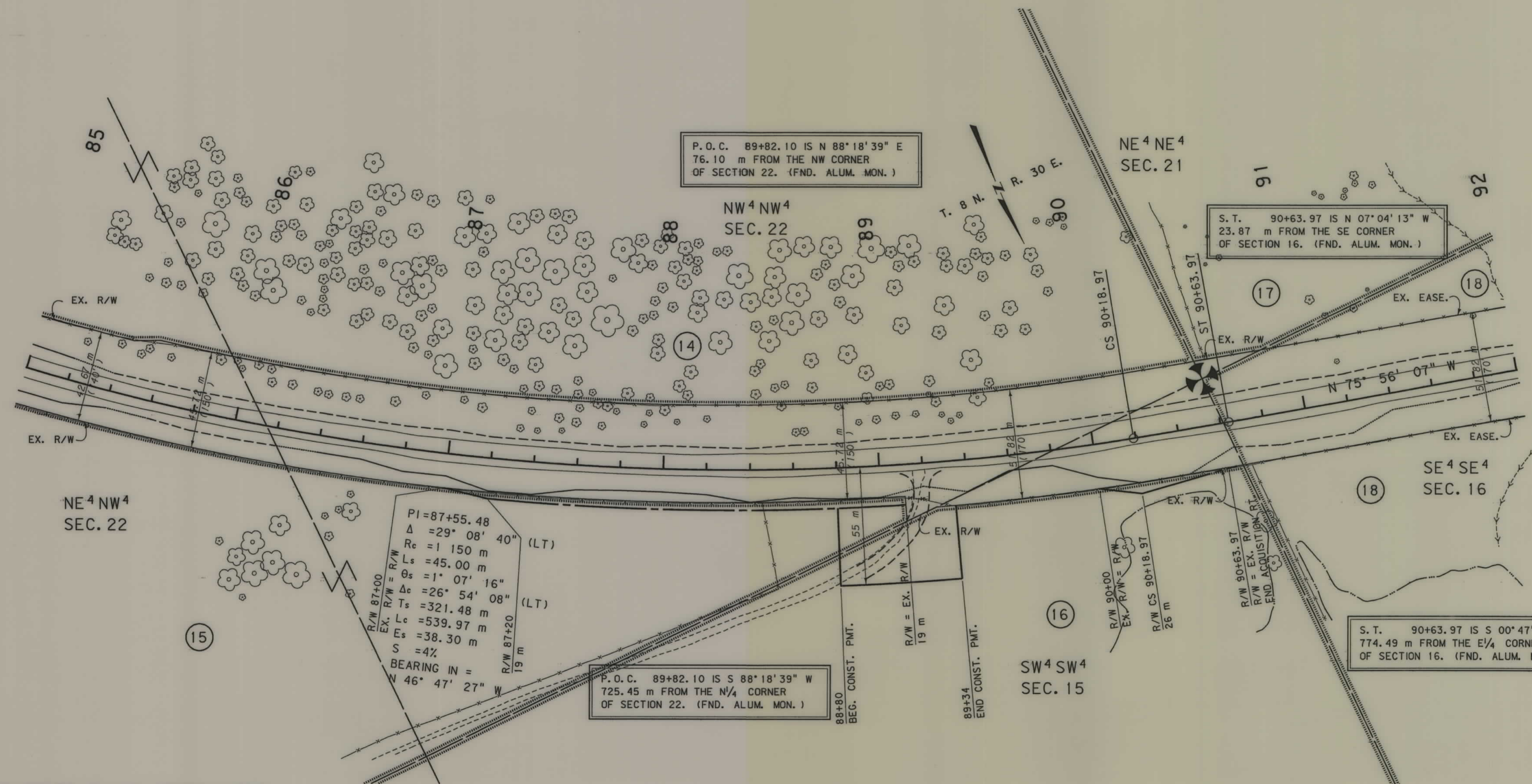
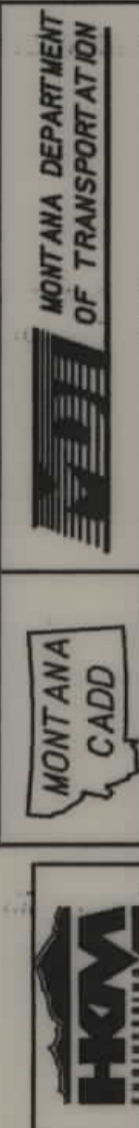
MONTANA DEPARTMENT OF TRANSPORTATION

RIGHT OF WAY PLAN
MUSSELSHELL COUNTY
SCALE 1:1000

...2974.rpln205.dgn
3/31/2004
2:01:26 PM
3
0679

STATE	RIGHT OF WAY ID.	SHEET NO.	TOTAL SHEETS
MONTANA	STPS 310-216126	14	19
PROJECT NUMBER 2974-006		MUSSELSHELL CO. LINE - NW	

SEE SHEET NO. 2 FOR OWNERSHIP NAMES, ADDRESSES, AREAS, ETC.



P.O.C. 89+82.10 IS N 88° 18' 39" E
76.10 m FROM THE NW CORNER
OF SECTION 22. (FND. ALUM. MON.)

S.T. 90+63.97 IS N 07° 04' 13" W
23.87 m FROM THE SE CORNER
OF SECTION 16. (FND. ALUM. MON.)

P.O.C. 89+82.10 IS S 88° 18' 39" W
725.45 m FROM THE N/4 CORNER
OF SECTION 22. (FND. ALUM. MON.)

S.T. 90+63.97 IS S 00° 47' 45" E
774.49 m FROM THE E/4 CORNER
OF SECTION 16. (FND. ALUM. MON.)

$PI = 87+55.48$
 $\Delta = 29^\circ 08' 40''$ (LT)
 $R_c = 1150$ m
 $L_s = 45.00$ m
 $\theta_s = 1^\circ 07' 16''$
 $\Delta_c = 26^\circ 54' 08''$ (LT)
 $T_s = 321.48$ m
 $L_c = 539.97$ m
 $E_s = 38.30$ m
 $S = 4\%$
 BEARING IN =
 $N 46^\circ 47' 27'' W$

RDROW

GRID STATE PLANE COORDINATES
 THIS IS A STATE PLANE COORDINATE PROJECT. ALL DIMENSIONS, DISTANCES AND AREAS ON THIS PROJECT ARE GRID, EXCEPT FOR THE EXISTING R/W WIDTH DIMENSION, WHICH IS RECORD. THE COMBINATION SCALE FACTOR IS 0.99928695

...29741001n204.dgn
 04/13/04
 01:14:12 PM
 N W C P S - 00679

- NOTES:
1. ALL MEASUREMENTS ARE METRIC EXCEPT AS NOTED
 2. THE PROPOSED R/W LINE WHERE A SPIRAL-CURVE TRANSITION IS USED IS A CHORD RATHER THAN A CONCENTRIC CURVE.
 3. THE ENGLISH AREAS ARE FOR INFORMATIONAL PURPOSES ONLY.
 4. ALL STATIONS AND OFFSETS FOR R/W BREAKS ARE IN REFERENCE TO THE R/W BASELINE.

BACKSLOPE LIMITS INCLUDE ROUNDING

CONSTRUCTION LIMITS: CUT SECTION (TOP OF CUT), TOE OF FILL (DITCH BOTTOM)

FHWA/DOT APPROVAL 9-5-02

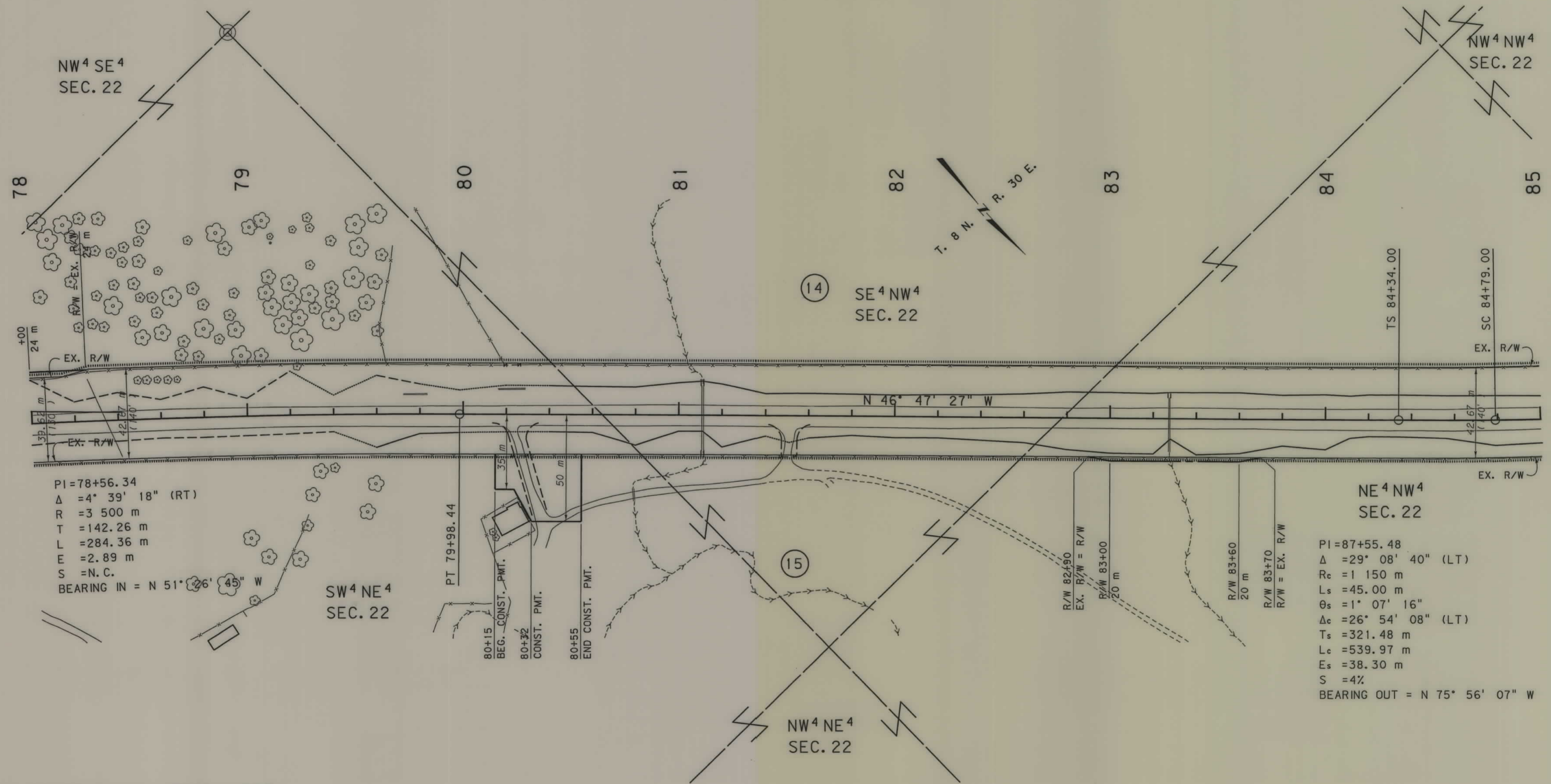
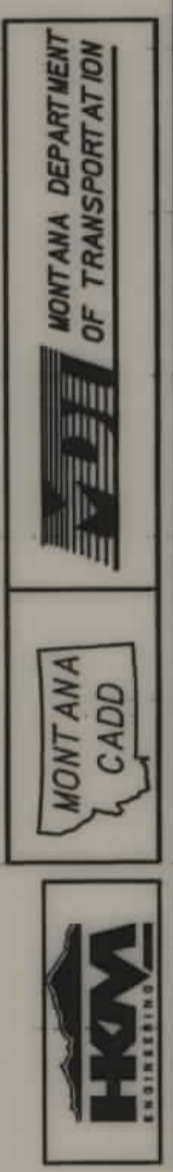
MAP REVISED 4-5-04

MONTANA DEPARTMENT OF TRANSPORTATION

RIGHT OF WAY PLAN
 MUSSELSHELL COUNTY
 SCALE 1:1000

STATE	RIGHT OF WAY ID.	SHEET NO.	TOTAL SHEETS
MONTANA	STPS 310-2(6)26	13	19
PROJECT NUMBER 2974-006		MUSSELSHELL CO. LINE - NW	

SEE SHEET NO. 2 FOR OWNERSHIP NAMES, ADDRESSES, AREAS, ETC.



$PI = 78+56.34$
 $\Delta = 4^\circ 39' 18''$ (RT)
 $R = 3\ 500$ m
 $T = 142.26$ m
 $L = 284.36$ m
 $E = 2.89$ m
 $S = N.C.$
 BEARING IN = N $51^\circ 26' 45''$ W

$PI = 87+55.48$
 $\Delta = 29^\circ 08' 40''$ (LT)
 $R_c = 1\ 150$ m
 $L_s = 45.00$ m
 $\theta_s = 1^\circ 07' 16''$
 $\Delta_c = 26^\circ 54' 08''$ (LT)
 $T_s = 321.48$ m
 $L_c = 539.97$ m
 $E_s = 38.30$ m
 $S = 4\%$
 BEARING OUT = N $75^\circ 56' 07''$ W

RDROW

GRID STATE PLANE COORDINATES
 THIS IS A STATE PLANE COORDINATE PROJECT. ALL DIMENSIONS, DISTANCES AND AREAS ON THIS PROJECT ARE GRID, EXCEPT FOR THE EXISTING R/W WIDTH DIMENSION, WHICH IS RECORD. THE COMBINATION SCALE FACTOR IS 0.99928695

- NOTES:
1. ALL MEASUREMENTS ARE METRIC EXCEPT AS NOTED
 2. THE PROPOSED R/W LINE WHERE A SPIRAL CURVE TRANSITION IS USED IS A CHORD RATHER THAN A CONCENTRIC CURVE.
 3. THE ENGLISH AREAS ARE FOR INFORMATIONAL PURPOSES ONLY.
 4. ALL STATIONS AND OFFSETS FOR R/W BREAKS ARE IN REFERENCE TO THE R/W BASELINE.

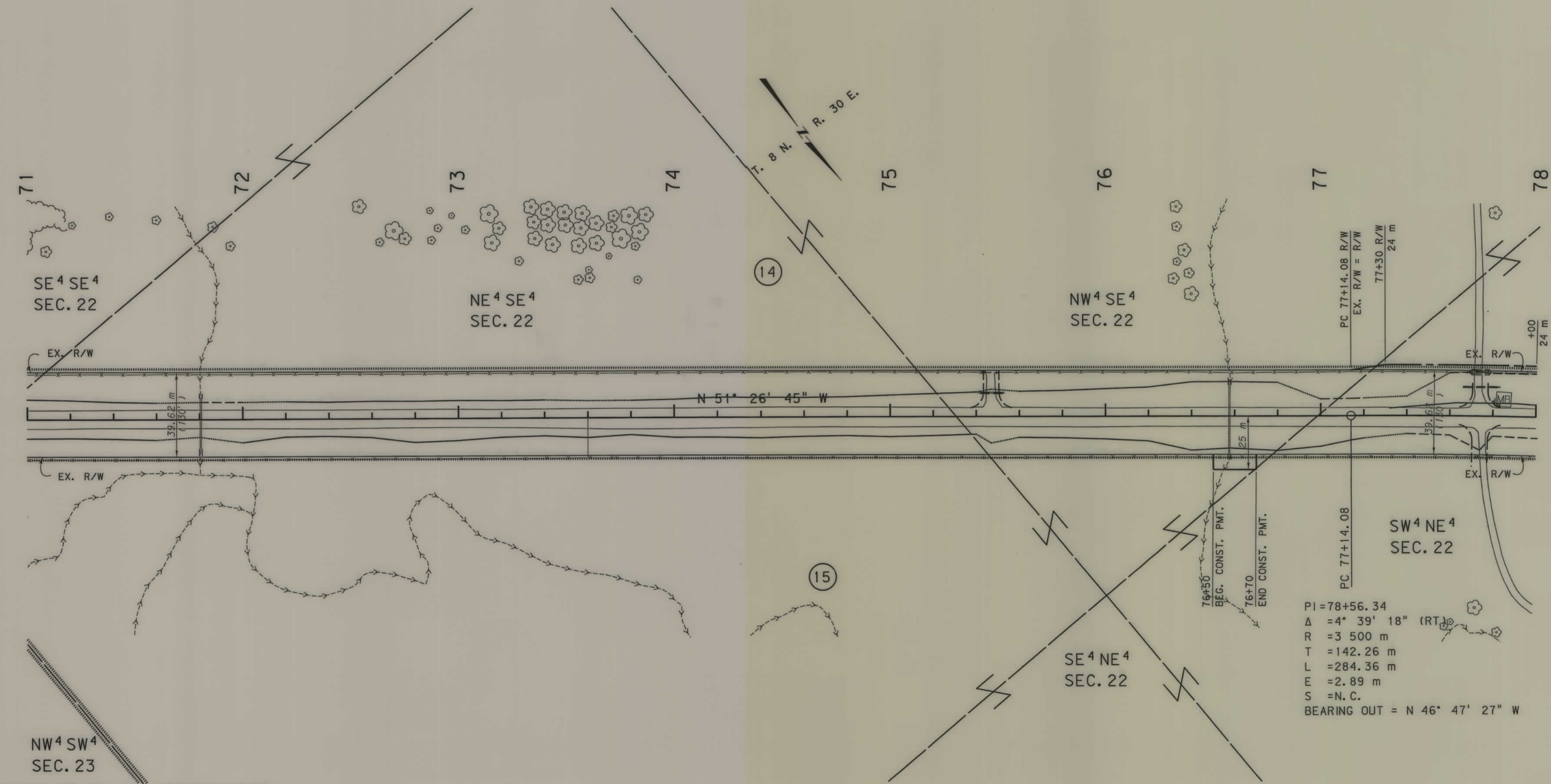
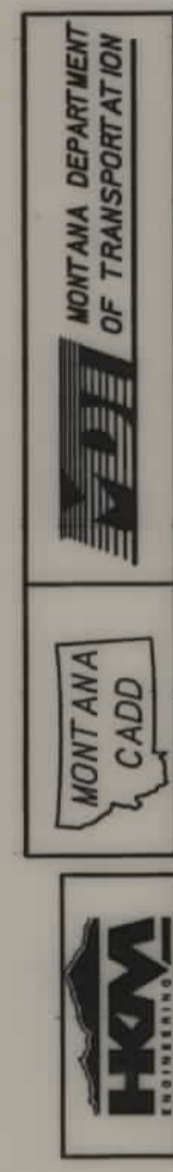
BACKSLOPE LIMITS INCLUDE ROUNDING	
CONSTRUCTION LIMITS:	
FHWA/DOT APPROVAL	9-5-02
MAP REVISED	

MONTANA
 DEPARTMENT OF TRANSPORTATION
RIGHT OF WAY PLAN
 MUSSELSHELL COUNTY
 SCALE 1:1000

... 2974.rdw\mz04.dgn
 3/31/2004
 2:01:24 PM
 3
 00679

STATE	RIGHT OF WAY ID.	SHEET NO.	TOTAL SHEETS
MONTANA	STPS 310-2(6)26	12	19
PROJECT NUMBER 2974-006			
MUSSELSHELL CO. LINE - NW			

SEE SHEET NO. 2 FOR OWNERSHIP NAMES, ADDRESSES, AREAS, ETC.



PI = 78+56.34
 $\Delta = 4^\circ 39' 18''$ (RT)
 R = 3 500 m
 T = 142.26 m
 L = 284.36 m
 E = 2.89 m
 S = N.C.
 BEARING OUT = N 46° 47' 27" W

RDROW

NW⁴ SW⁴ SEC. 23
GRID STATE PLANE COORDINATES
 THIS IS A STATE PLANE COORDINATE PROJECT. ALL DIMENSIONS, DISTANCES AND AREAS ON THIS PROJECT ARE GRID, EXCEPT FOR THE EXISTING R/W WIDTH DIMENSION, WHICH IS RECORD. THE COMBINATION SCALE FACTOR IS 0.99928695

2974rdp1n204.dgn
 3/31/2004
 2:01:23 PM
 N U 00679

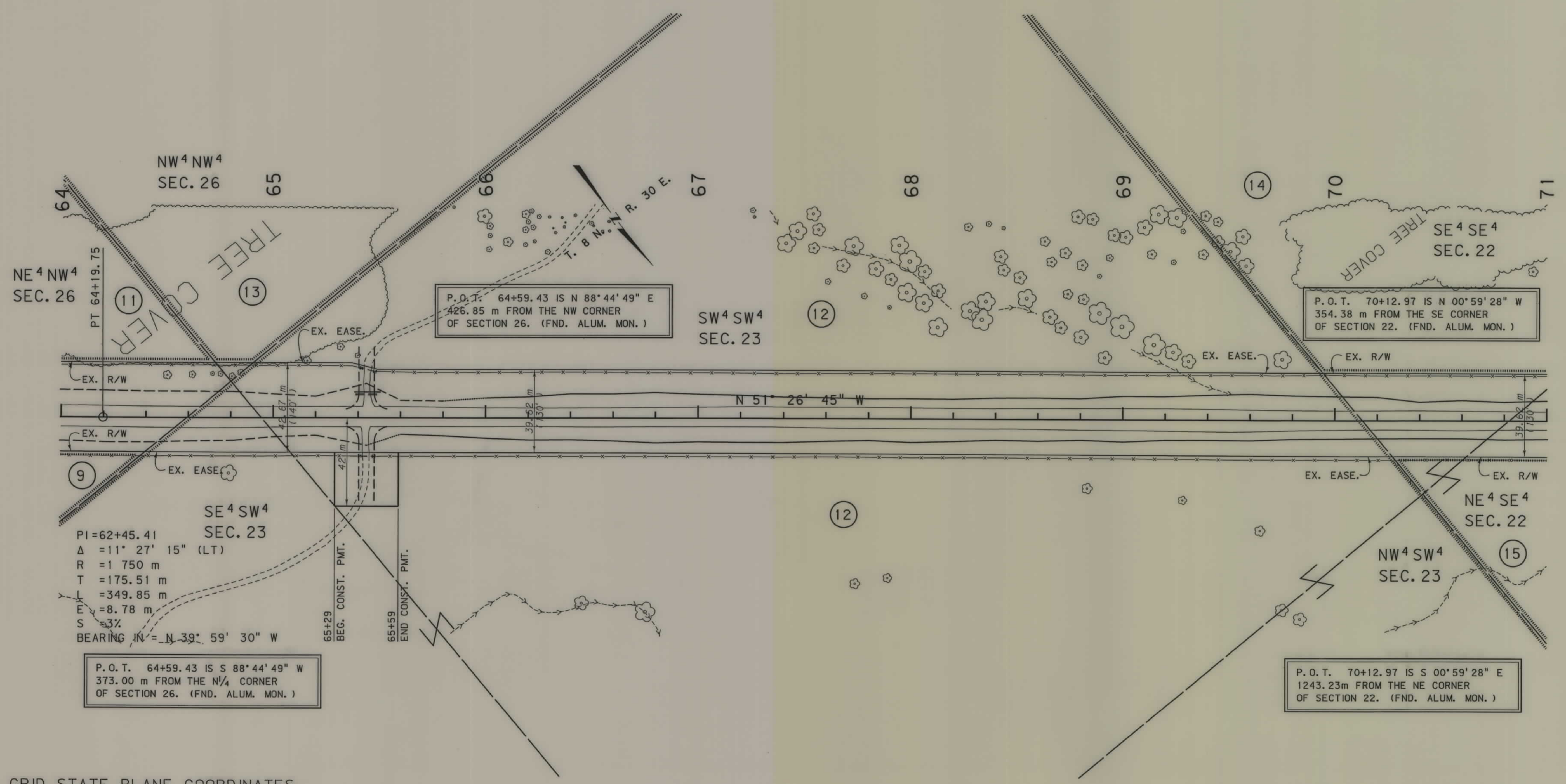
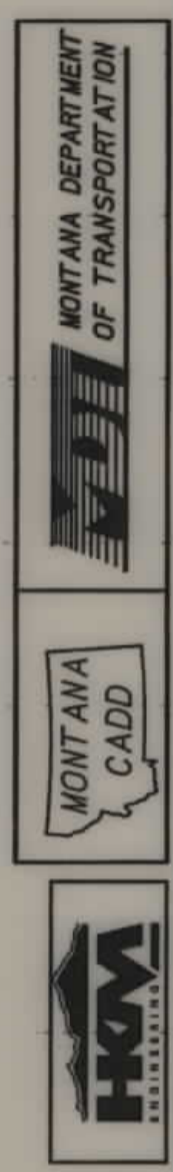
- NOTES:
1. ALL MEASUREMENTS ARE METRIC EXCEPT AS NOTED
 2. THE PROPOSED R/W LINE WHERE A SPIRAL CURVE TRANSITION IS USED IS A CHORD RATHER THAN A CONCENTRIC CURVE.
 3. THE ENGLISH AREAS ARE FOR INFORMATIONAL PURPOSES ONLY.
 4. ALL STATIONS AND OFFSETS FOR R/W BREAKS ARE IN REFERENCE TO THE R/W BASELINE.

BACKSLOPE LIMITS INCLUDE ROUNDING	CONSTRUCTION LIMITS:
	CUT SECTION TOE OF FILL
	TOP OF CUT DITCH BOTTOM
FHWA/DOT APPROVAL	9-5-02
MAP REVISED	

MONTANA
 DEPARTMENT OF TRANSPORTATION
RIGHT OF WAY PLAN
 MUSSELSHELL COUNTY
 SCALE 1:1000

STATE	RIGHT OF WAY ID.	SHEET NO.	TOTAL SHEETS
MONTANA	STPS 310-2(6)26	11	19
PROJECT NUMBER 2974-006		MUSSELSHELL CO. LINE - NW	

SEE SHEET NO. 2 FOR OWNERSHIP NAMES, ADDRESSES, AREAS, ETC.



RDROW

GRID STATE PLANE COORDINATES

THIS IS A STATE PLANE COORDINATE PROJECT. ALL DIMENSIONS, DISTANCES AND AREAS ON THIS PROJECT ARE GRID, EXCEPT FOR THE EXISTING R/W WIDTH DIMENSION, WHICH IS RECORD. THE COMBINATION SCALE FACTOR IS 0.99928695

- NOTES:
1. ALL MEASUREMENTS ARE METRIC EXCEPT AS NOTED
 2. THE PROPOSED R/W LINE WHERE A SPIRAL CURVE TRANSITION IS USED IS A CHORD RATHER THAN A CONCENTRIC CURVE.
 3. THE ENGLISH AREAS ARE FOR INFORMATIONAL PURPOSES ONLY.
 4. ALL STATIONS AND OFFSETS FOR R/W BREAKS ARE IN REFERENCE TO THE R/W BASELINE.

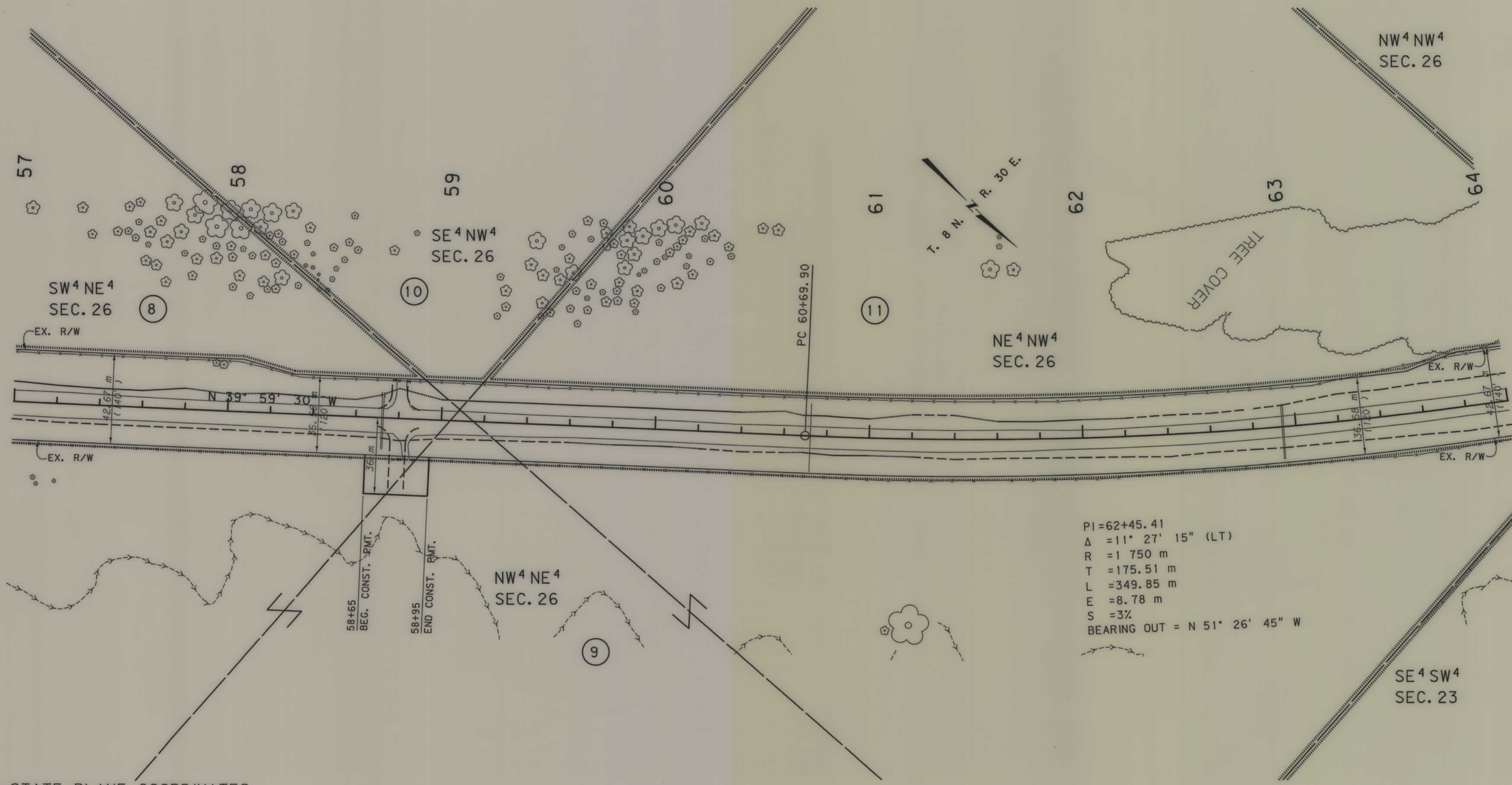
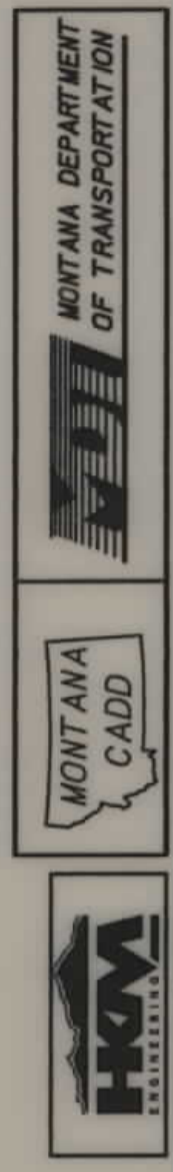
BACKSLOPE LIMITS INCLUDE ROUNDING	CONSTRUCTION LIMITS:
	CUT SECTION TOE OF FILL
	TOP OF CUT DITCH BOTTOM
FHWA/DOT APPROVAL	9-5-02
MAP REVISED	

MONTANA DEPARTMENT OF TRANSPORTATION
RIGHT OF WAY PLAN
MUSSELSHELL COUNTY
SCALE 1:1000

2974.rdw\2003.dgn
3/31/2004
2:01:21 PM
00679

STATE	RIGHT OF WAY ID.	SHEET NO.	TOTAL SHEETS
MONTANA	STPS 310-2(6)26	10	19
PROJECT NUMBER 2974-006		MUSSELSHELL CO. LINE - NW	

SEE SHEET NO. 2 FOR OWNERSHIP NAMES, ADDRESSES, AREAS, ETC.



RDROW

GRID STATE PLANE COORDINATES

THIS IS A STATE PLANE COORDINATE PROJECT. ALL DIMENSIONS, DISTANCES AND AREAS ON THIS PROJECT ARE GRID, EXCEPT FOR THE EXISTING R/W WIDTH DIMENSION, WHICH IS RECORD. THE COMBINATION SCALE FACTOR IS 0.99928695

C:\gma\2974\RDPLN203.DGN
7/9/2004
7:01:15 AM
00679

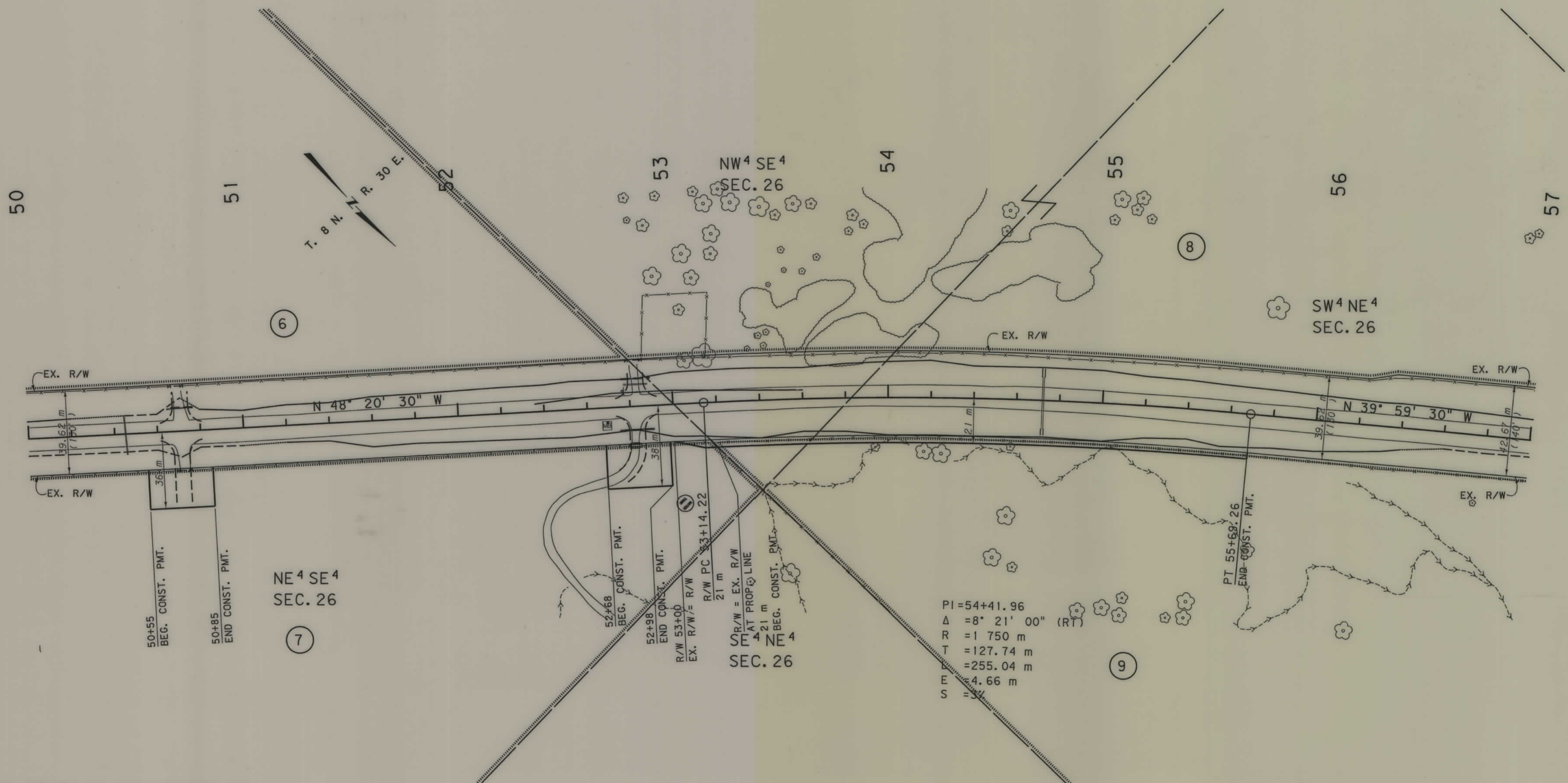
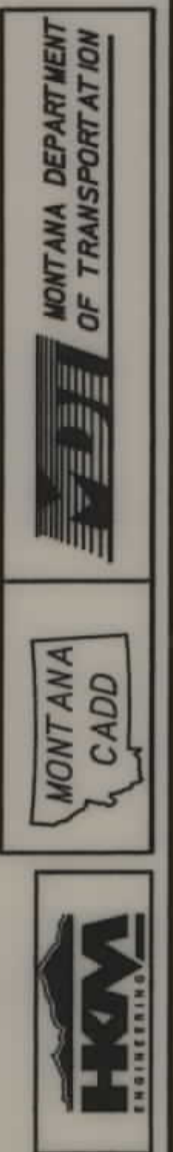
- NOTES:
1. ALL MEASUREMENTS ARE METRIC EXCEPT AS NOTED
 2. THE PROPOSED R/W LINE WHERE A SPIRAL CURVE TRANSITION IS USED IS A CHORD RATHER THAN A CONCENTRIC CURVE.
 3. THE ENGLISH AREAS ARE FOR INFORMATIONAL PURPOSES ONLY.
 4. ALL STATIONS AND OFFSETS FOR R/W BREAKS ARE IN REFERENCE TO THE R/W BASELINE.

BACKSLOPE LIMITS INCLUDE ROUNDING	CONSTRUCTION LIMITS:
	CUT SECTION TOE OF FILL
FHWA/DOT APPROVAL	9-5-02
MAP REVISED	5-10-04 6-24-04

MONTANA DEPARTMENT OF TRANSPORTATION
RIGHT OF WAY PLAN
MUSSELSHELL COUNTY
SCALE 1:1000

STATE	RIGHT OF WAY ID.	SHEET NO.	TOTAL SHEETS
MONTANA	STPS 310-2(6)26	9	19
PROJECT NUMBER 2974-006		MUSSELSHELL CO. LINE - NW	

SEE SHEET NO. 2 FOR OWNERSHIP NAMES, ADDRESSES, AREAS, ETC.



RDROW

GRID STATE PLANE COORDINATES

THIS IS A STATE PLANE COORDINATE PROJECT. ALL DIMENSIONS, DISTANCES AND AREAS ON THIS PROJECT ARE GRID, EXCEPT FOR THE EXISTING R/W WIDTH DIMENSION, WHICH IS RECORD. THE COMBINATION SCALE FACTOR IS 0.99928695

- NOTES:
1. ALL MEASUREMENTS ARE METRIC EXCEPT AS NOTED
 2. THE PROPOSED R/W LINE WHERE A SPIRAL CURVE TRANSITION IS USED IS A CHORD RATHER THAN A CONCENTRIC CURVE.
 3. THE ENGLISH AREAS ARE FOR INFORMATIONAL PURPOSES ONLY.
 4. ALL STATIONS AND OFFSETS FOR R/W BREAKS ARE IN REFERENCE TO THE R/W BASELINE.

BACKSLOPE LIMITS INCLUDE ROUNDING	
CONSTRUCTION LIMITS:	CUT SECTION (TOP OF CUT / TOE OF FILL)
FHWA/DOT APPROVAL	9-5-02
MAP REVISED	5-10-04 6-24-04

MONTANA DEPARTMENT OF TRANSPORTATION

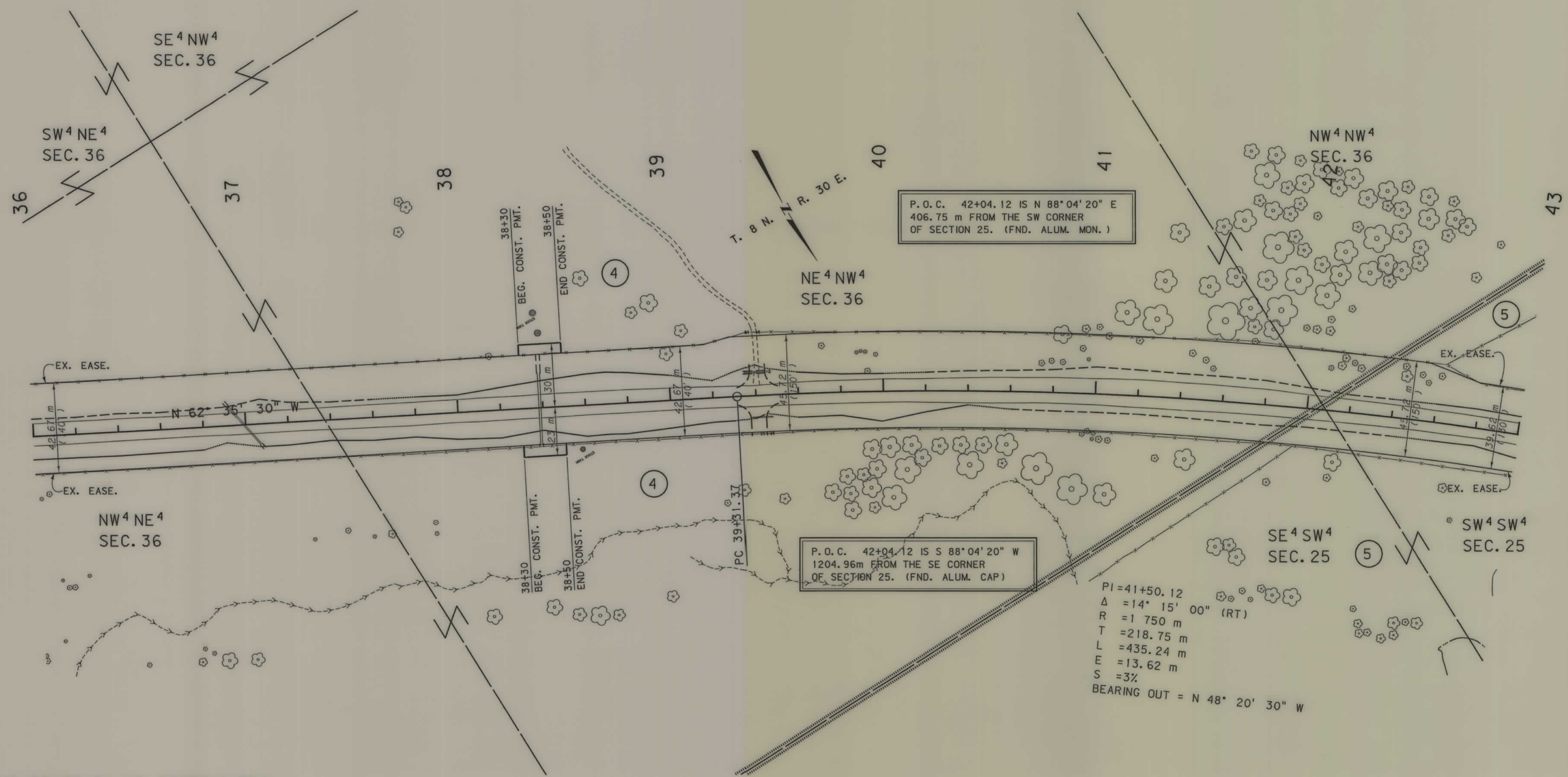
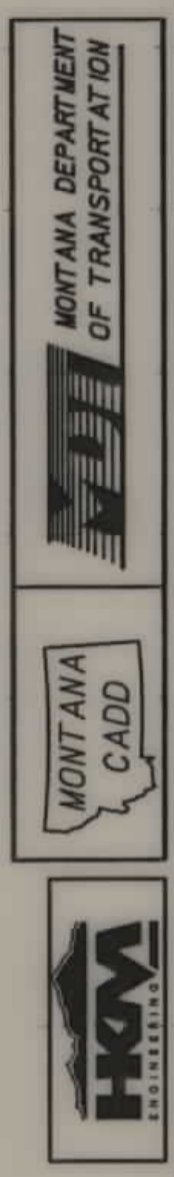
RIGHT OF WAY PLAN
MUSSELSHELL COUNTY

SCALE 1" = 1000'

C:\dms\2974\RDROW\PLN\203.DGN
7/9/2004
7:01:14 AM
3
2
00679

STATE	RIGHT OF WAY ID.	SHEET NO.	TOTAL SHEETS
MONTANA	STPS 310-2(6)26	7	19
PROJECT NUMBER 2974-006			
MUSSELSHELL CO. LINE - NW			

SEE SHEET NO. 2 FOR OWNERSHIP NAMES, ADDRESSES, AREAS, ETC.



RDROW

GRID STATE PLANE COORDINATES

THIS IS A STATE PLANE COORDINATE PROJECT. ALL DIMENSIONS, DISTANCES AND AREAS ON THIS PROJECT ARE GRID, EXCEPT FOR THE EXISTING R/W WIDTH DIMENSION, WHICH IS RECORD. THE COMBINATION SCALE FACTOR IS 0.99928695

1. 2974.rdb/mz02.dgn
 3/31/2004
 2:01:19 PM
 3
 2
 1

- NOTES:
1. ALL MEASUREMENTS ARE METRIC EXCEPT AS NOTED
 2. THE PROPOSED R/W LINE WHERE A SPIRAL CURVE TRANSITION IS USED IS A CHORD RATHER THAN A CONCENTRIC CURVE.
 3. THE ENGLISH AREAS ARE FOR INFORMATIONAL PURPOSES ONLY.
 4. ALL STATIONS AND OFFSETS FOR R/W BREAKS ARE IN REFERENCE TO THE R/W BASELINE.

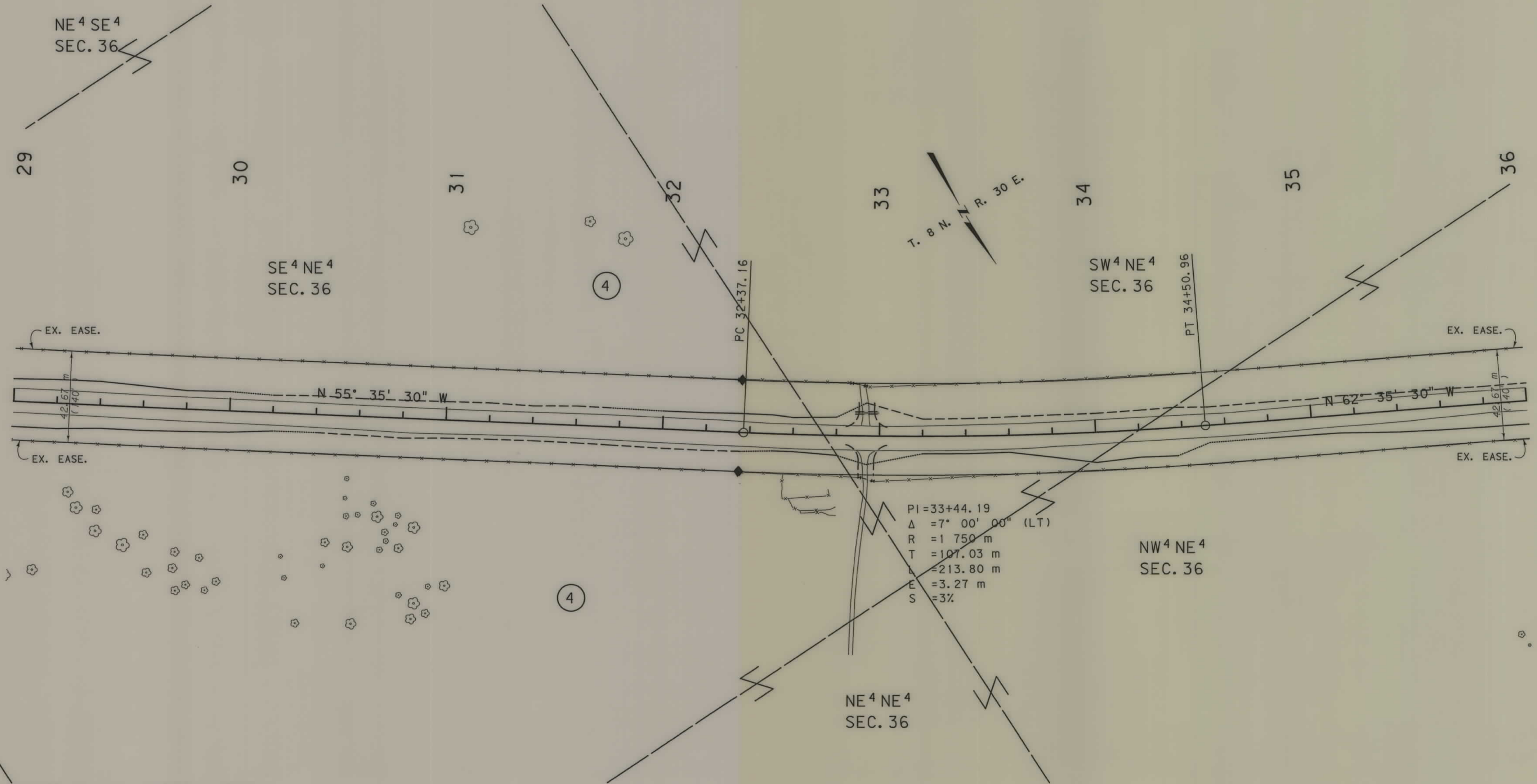
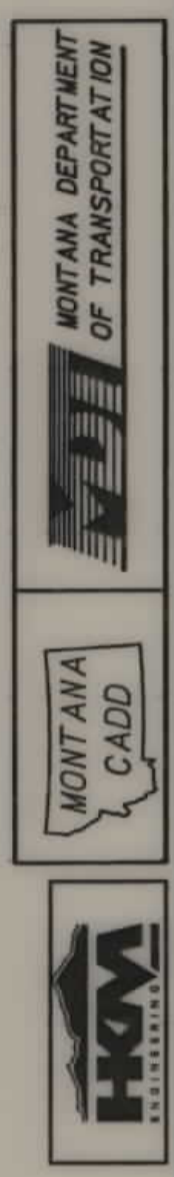
BACKSLOPE LIMITS INCLUDE ROUNDING	TOP OF CUT
CONSTRUCTION LIMITS:	CUT SECTION
	TOE OF FILL
FHWA/DOT APPROVAL	9-5-02
MAP REVISED	

MONTANA
DEPARTMENT OF TRANSPORTATION

RIGHT OF WAY PLAN
MUSSELSHELL COUNTY
SCALE 1:1000

STATE	RIGHT OF WAY ID.	SHEET NO.	TOTAL SHEETS
MONTANA	STPS 310-2(6)26	6	19
PROJECT NUMBER 2974-006		MUSSELSHELL CO. LINE - NW	

SEE SHEET NO. 2 FOR OWNERSHIP NAMES, ADDRESSES, AREAS, ETC.



RDROW

GRID STATE PLANE COORDINATES

THIS IS A STATE PLANE COORDINATE PROJECT. ALL DIMENSIONS, DISTANCES AND AREAS ON THIS PROJECT ARE GRID, EXCEPT FOR THE EXISTING R/W WIDTH DIMENSION, WHICH IS RECORD. THE COMBINATION SCALE FACTOR IS 0.99928695

FOR EXISTING R/W RETRACEMENT, SEE CERTIFICATE OF SURVEY 2002-3RB

- NOTES:
1. ALL MEASUREMENTS ARE METRIC EXCEPT AS NOTED
 2. THE PROPOSED R/W LINE WHERE A SPIRAL CURVE TRANSITION IS USED IS A CHORD RATHER THAN A CONCENTRIC CURVE.
 3. THE ENGLISH AREAS ARE FOR INFORMATIONAL PURPOSES ONLY.
 4. ALL STATIONS AND OFFSETS FOR R/W BREAKS ARE IN REFERENCE TO THE R/W BASELINE.

BACKSLOPE LIMITS INCLUDE ROUNDING	CONSTRUCTION LIMITS:
	CUT SECTION
	TOE OF FILL
FHWA/DOT APPROVAL	9-5-02
MAP REVISED	

MONTANA DEPARTMENT OF TRANSPORTATION

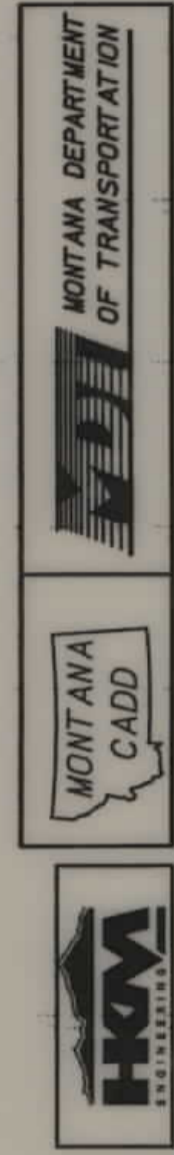
RIGHT OF WAY PLAN
MUSSELSHELL COUNTY

SCALE 1:1000

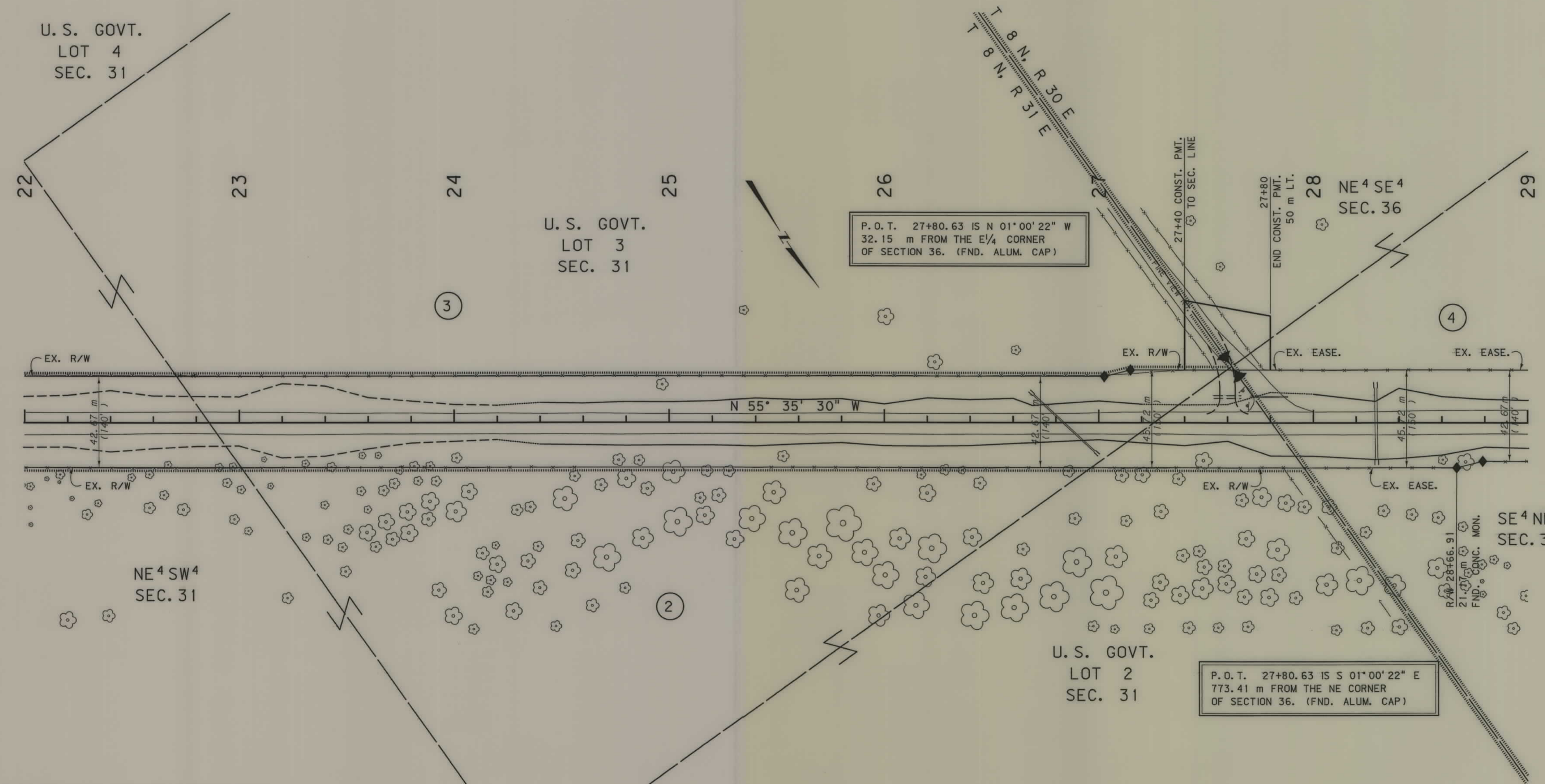
\2974\rdrow\202.dgn
 3/3/2004
 2:01:18 PM
 3
 00679

STATE	RIGHT OF WAY ID.	SHEET NO.	TOTAL SHEETS
MONTANA	STPS 310-2(6)26	5	19
PROJECT NUMBER 2974-006		MUSSELSHELL CO. LINE - NW	

SEE SHEET NO. 2 FOR OWNERSHIP NAMES, ADDRESSES, AREAS, ETC.



RDROW



GRID STATE PLANE COORDINATES

THIS IS A STATE PLANE COORDINATE PROJECT. ALL DIMENSIONS, DISTANCES AND AREAS ON THIS PROJECT ARE GRID, EXCEPT FOR THE EXISTING R/W WIDTH DIMENSION, WHICH IS RECORD. THE COMBINATION SCALE FACTOR IS 0.99928695

FOR EXISTING R/W RETRACEMENT, SEE CERTIFICATE OF SURVEY 2002-3RB

- NOTES:
1. ALL MEASUREMENTS ARE METRIC EXCEPT AS NOTED
 2. THE PROPOSED R/W LINE WHERE A SPIRAL CURVE TRANSITION IS USED IS A CHORD RATHER THAN A CONCENTRIC CURVE.
 3. THE ENGLISH AREAS ARE FOR INFORMATIONAL PURPOSES ONLY.
 4. ALL STATIONS AND OFFSETS FOR R/W BREAKS ARE IN REFERENCE TO THE R/W BASELINE.

BACKSLOPE LIMITS INCLUDE ROUNDING	CONSTRUCTION LIMITS:
CUT SECTION	TOP OF CUT
TOE OF FILL	DITCH BOTTOM
FHWA/DOT APPROVAL	9-5-02
MAP REVISED	

MONTANA DEPARTMENT OF TRANSPORTATION

RIGHT OF WAY PLAN

MUSSELSHELL COUNTY

SCALE 1:1000

...\\2974\rdrow\201.dgn
 3/31/2004
 2:01:17 PM
 J0679

STATE	RIGHT OF WAY ID.	SHEET NO.	TOTAL SHEETS
MONTANA	STPS 310-2(6)26	4	19
PROJECT NUMBER 2974-006		MUSSELSHELL CO. LINE - NW	

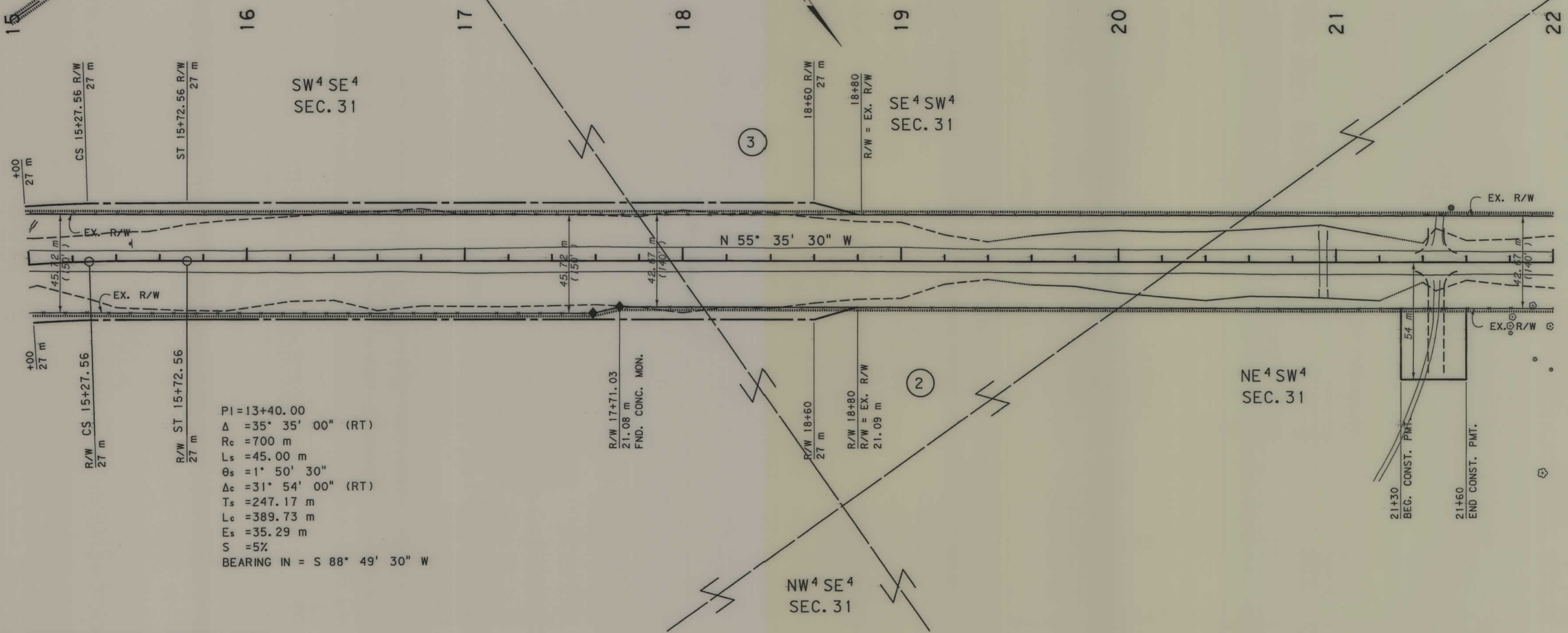
SEE SHEET NO. 2 FOR OWNERSHIP NAMES, ADDRESSES, AREAS, ETC.

YELLOWSTONE COUNTY

U. S. GOVT.
LOT 2
SEC. 6
T 7 N, R 31 E
T 8 N, R 31 E

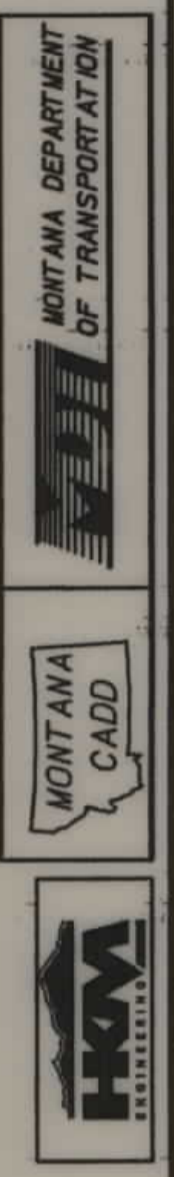
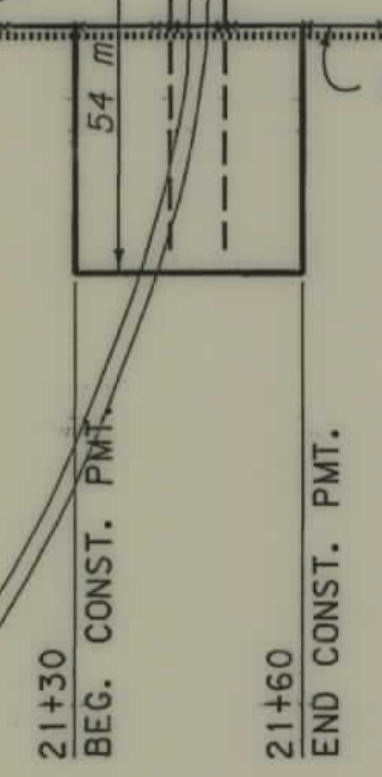
MUSSELSHELL COUNTY

U. S. GOVT.
LOT 4
SEC. 31



PI = 13+40.00
 $\Delta = 35^\circ 35' 00''$ (RT)
 $R_c = 700$ m
 $L_s = 45.00$ m
 $\theta_s = 1^\circ 50' 30''$
 $\Delta_c = 31^\circ 54' 00''$ (RT)
 $T_s = 247.17$ m
 $L_c = 389.73$ m
 $E_s = 35.29$ m
 $S = 5\%$
 BEARING IN = S 88° 49' 30" W

R/W 17+71.03
 21.08 m
 FND. CONC. MON.
 R/W 18+60
 27 m
 R/W 18+80
 R/W = EX. R/W
 21.09 m



RDROW

... \ 2974\ road\ rdrow\ rdrow.dgn
 04/13/04
 01:14:04 PM
 JPS - U0679

GRID STATE PLANE COORDINATES

THIS IS A STATE PLANE COORDINATE PROJECT. ALL DIMENSIONS, DISTANCES AND AREAS ON THIS PROJECT ARE GRID, EXCEPT FOR THE EXISTING R/W WIDTH DIMENSION, WHICH IS RECORD. THE COMBINATION SCALE FACTOR IS 0.99928695

FOR EXISTING R/W RETRACEMENT, SEE CERTIFICATE OF SURVEY 2002-3RB

- NOTES:
1. ALL MEASUREMENTS ARE METRIC EXCEPT AS NOTED
 2. THE PROPOSED R/W LINE WHERE A SPIRAL CURVE TRANSITION IS USED IS A CHORD RATHER THAN A CONCENTRIC CURVE.
 3. THE ENGLISH AREAS ARE FOR INFORMATIONAL PURPOSES ONLY.
 4. ALL STATIONS AND OFFSETS FOR R/W BREAKS ARE IN REFERENCE TO THE R/W BASELINE.

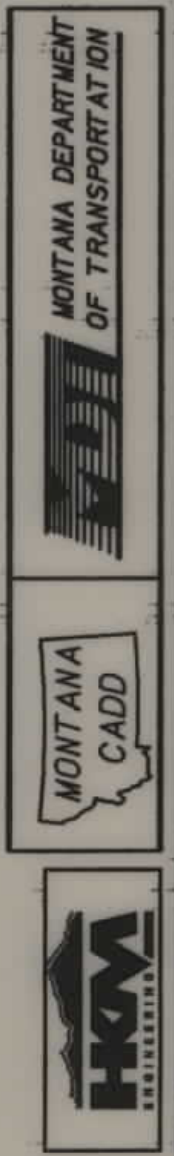
BACKSLOPE LIMITS INCLUDE ROUNDING	TOP OF CUT
CONSTRUCTION LIMITS:	CUT SECTION
	TOE OF FILL
FHWA/DOT APPROVAL	9-5-02
MAP REVISED	4-5-04

MONTANA DEPARTMENT OF TRANSPORTATION

RIGHT OF WAY PLAN
MUSSELSHELL & YELLOWSTONE COUNTIES
SCALE 1:1000

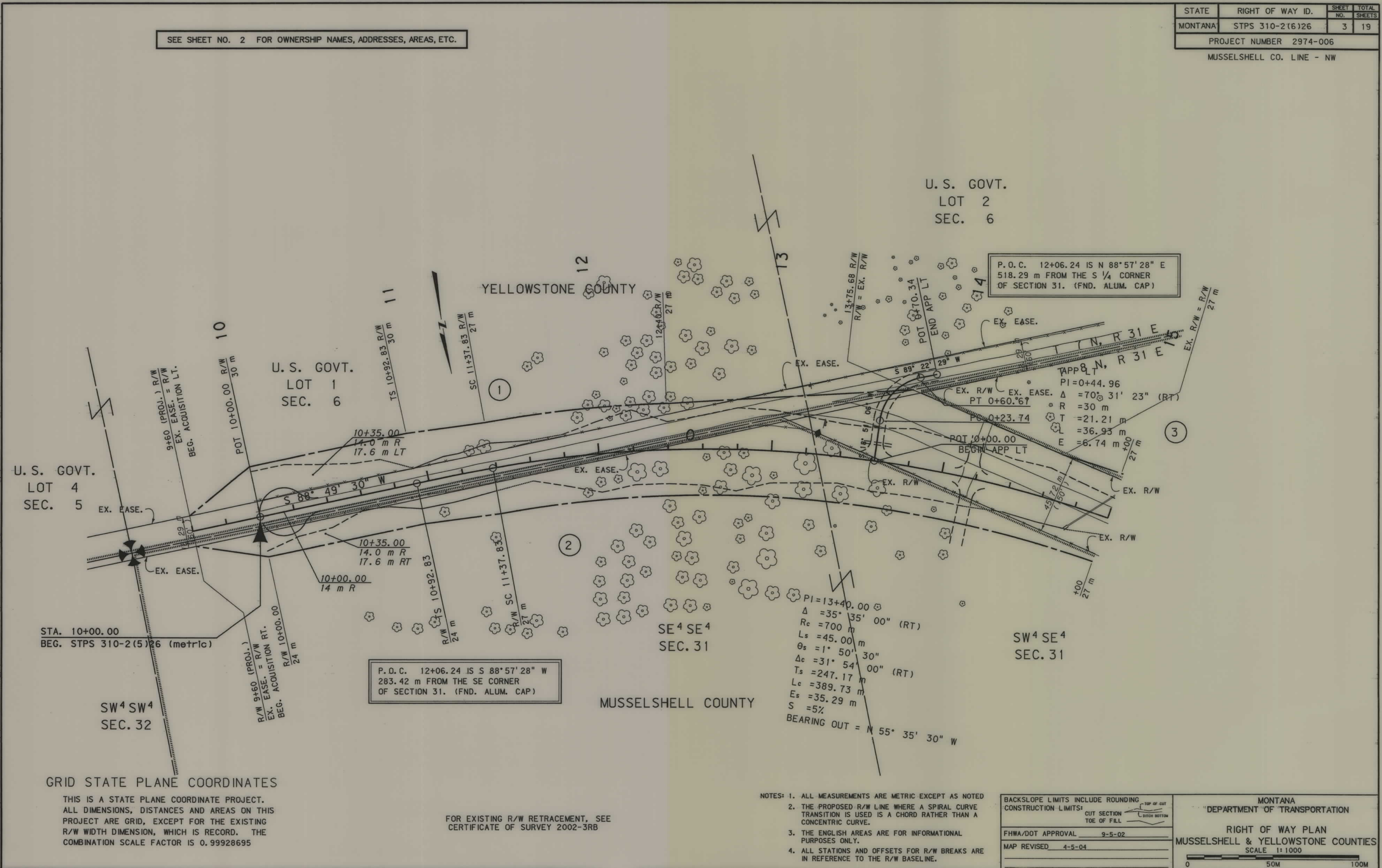
STATE	RIGHT OF WAY ID.	SHEET NO.	TOTAL SHEETS
MONTANA	STPS 310-2(6)26	3	19
PROJECT NUMBER		2974-006	
MUSSELSHELL CO. LINE - NW			

SEE SHEET NO. 2 FOR OWNERSHIP NAMES, ADDRESSES, AREAS, ETC.



RDROW

2974.rdw01.dgn
04/13/04
01:14:01 PM
EPS - 00679



GRID STATE PLANE COORDINATES

THIS IS A STATE PLANE COORDINATE PROJECT. ALL DIMENSIONS, DISTANCES AND AREAS ON THIS PROJECT ARE GRID, EXCEPT FOR THE EXISTING R/W WIDTH DIMENSION, WHICH IS RECORD. THE COMBINATION SCALE FACTOR IS 0.99928695

FOR EXISTING R/W RETRACEMENT, SEE CERTIFICATE OF SURVEY 2002-3RB

- NOTES:
1. ALL MEASUREMENTS ARE METRIC EXCEPT AS NOTED
 2. THE PROPOSED R/W LINE WHERE A SPIRAL CURVE TRANSITION IS USED IS A CHORD RATHER THAN A CONCENTRIC CURVE.
 3. THE ENGLISH AREAS ARE FOR INFORMATIONAL PURPOSES ONLY.
 4. ALL STATIONS AND OFFSETS FOR R/W BREAKS ARE IN REFERENCE TO THE R/W BASELINE.

BACKSLOPE LIMITS INCLUDE ROUNDING	
CONSTRUCTION LIMITS: CUT SECTION	TOP OF CUT
TOE OF FILL	DITCH BOTTOM
FHWA/DOT APPROVAL	9-5-02
MAP REVISED	4-5-04

MONTANA DEPARTMENT OF TRANSPORTATION

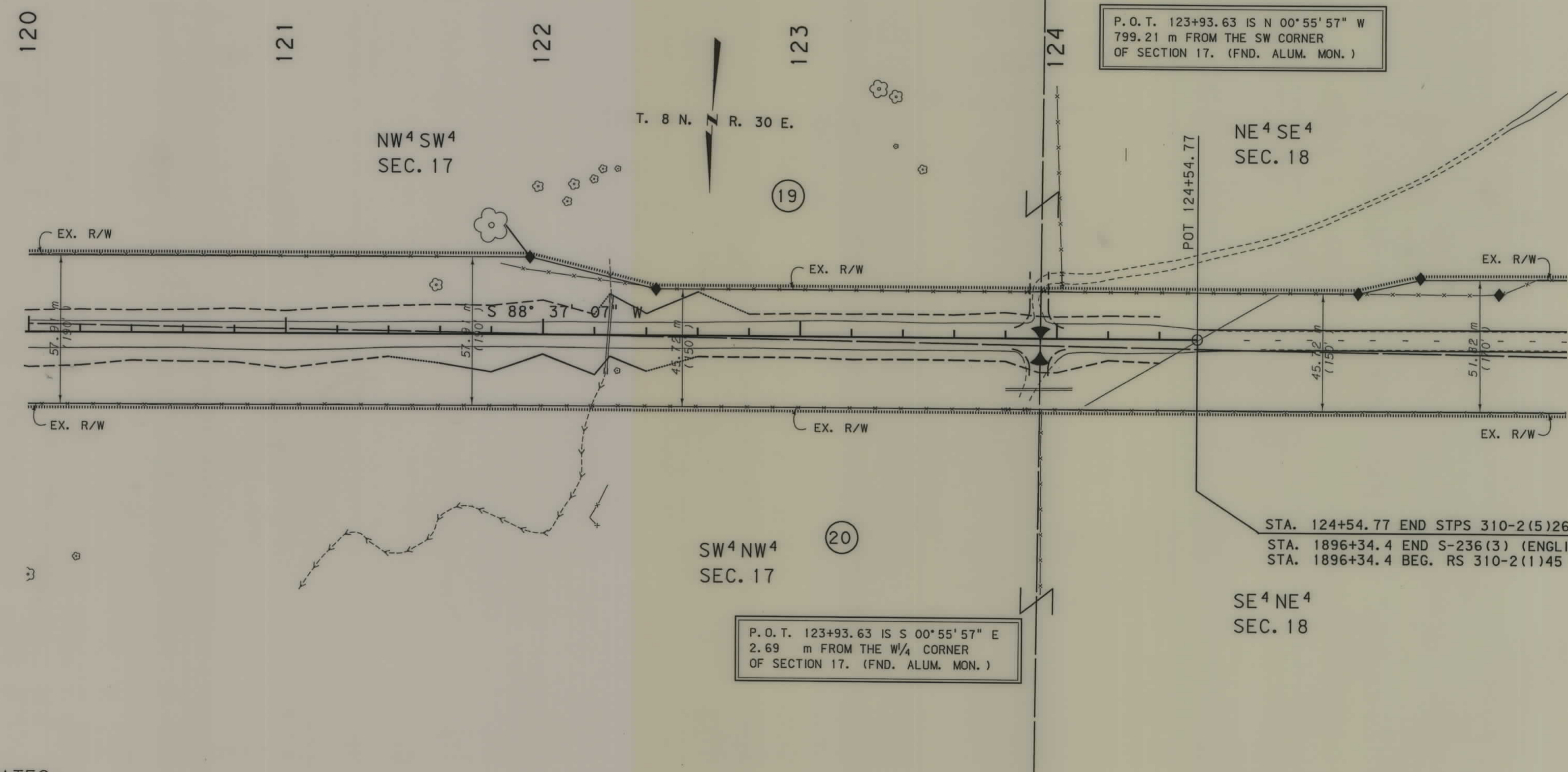
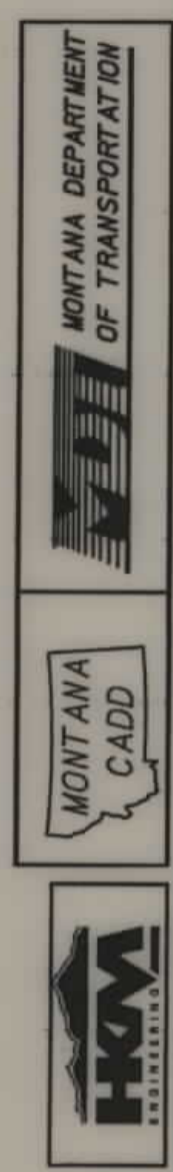
RIGHT OF WAY PLAN

MUSSELSHELL & YELLOWSTONE COUNTIES

SCALE 1:1000

SEE SHEET NO. 2 FOR OWNERSHIP NAMES, ADDRESSES, AREAS, ETC.

STATE	RIGHT OF WAY ID.	SHEET NO.	TOTAL SHEETS
MONTANA	STPS 310-2(6)26	19	19
PROJECT NUMBER 2974-006		MUSSELSHELL CO. LINE - NW	



P. O. T. 123+93.63 IS N 00°55'57" W
799.21 m FROM THE SW CORNER
OF SECTION 17. (FND. ALUM. MON.)

P. O. T. 123+93.63 IS S 00°55'57" E
2.69 m FROM THE W/4 CORNER
OF SECTION 17. (FND. ALUM. MON.)

STA. 124+54.77 END STPS 310-2(5)26 (metric) =
STA. 1896+34.4 END S-236(3) (ENGLISH) =
STA. 1896+34.4 BEG. RS 310-2(1)45 (ENGLISH)

RDROW

GRID STATE PLANE COORDINATES

THIS IS A STATE PLANE COORDINATE PROJECT.
ALL DIMENSIONS, DISTANCES AND AREAS ON THIS
PROJECT ARE GRID, EXCEPT FOR THE EXISTING
R/W WIDTH DIMENSION, WHICH IS RECORD. THE
COMBINATION SCALE FACTOR IS 0.99928695

FOR EXISTING R/W RETRACEMENT, SEE
CERTIFICATE OF SURVEY 2003-12

- NOTES:
1. ALL MEASUREMENTS ARE METRIC EXCEPT AS NOTED
 2. THE PROPOSED R/W LINE WHERE A SPIRAL CURVE TRANSITION IS USED IS A CHORD RATHER THAN A CONCENTRIC CURVE.
 3. THE ENGLISH AREAS ARE FOR INFORMATIONAL PURPOSES ONLY.
 4. ALL STATIONS AND OFFSETS FOR R/W BREAKS ARE IN REFERENCE TO THE R/W BASELINE.

BACKSLOPE LIMITS INCLUDE ROUNDING	CONSTRUCTION LIMITS:
	CUT SECTION
	TOE OF FILL
FHWA/DOT APPROVAL	9-5-02
MAP REVISED	

MONTANA
DEPARTMENT OF TRANSPORTATION

RIGHT OF WAY PLAN
MUSSELSHELL COUNTY
SCALE 1:1000

2974ropinz06.dgn
3/31/2004
2:01:29 PM
UN 0679