

THIS PROJECT

# MONTANA DEPARTMENT OF TRANSPORTATION

STATE	RIGHT OF WAY	SHEET NO.	TOTAL SHEETS
MONTANA		1	3
R/W ID.		STPHS 32(47)	
UNIFORM PROJECT NO.		5871-047-000	

2003 SAFETY IMPROVEMENTS SW OF MISSOULA

## RIGHT OF WAY PLAN FEDERAL AID PROJECT STPHS 32(47) 2003 SAFETY IMPROVEMENTS SW OF MISSOULA MISSOULA COUNTY

LENGTH 0.1 MILE

SEE SHEET NO. 2 FOR OWNERSHIP  
NAMES, ADDRESSES, AREAS, ETC.

### PLAN LEGEND

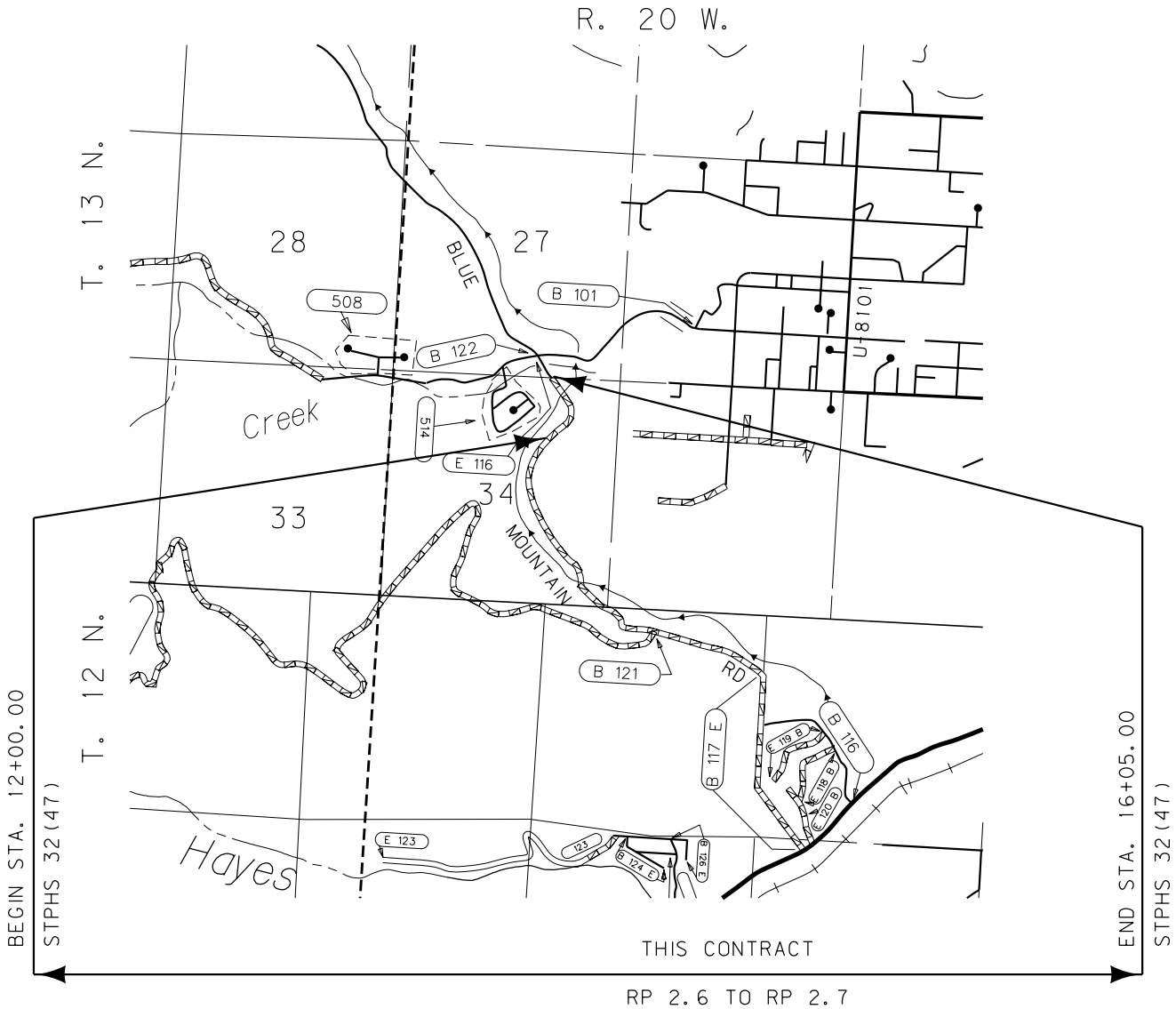
EXISTING EASEMENT LINE	---
PROPOSED RIGHT OF WAY LINE	---
EXISTING RIGHT OF WAY LINE	---
RAILROAD RIGHT OF WAY LINE	---
RIGHT OF WAY BASELINE	---
STK'D CENTERLINE	---
SECTION LINE	---
OWNERSHIP BOUNDARY	---
FULL ACCESS CONTROL	AG AG
LIMITED ACCESS CONTROL	/// ///
EXISTING ACCESS CONTROL	/// ///
PRESENT TRAVELED WAY (P.T.W.)	---
FENCE LINE	---
EXISTING GUARDRAIL	---
PROPOSED GUARDRAIL	---
GATE IN FENCE	---
CATTLE GUARD: EXIST. - PROPOSED	---
SECTION CORNER	FOUND UNFOUND
1/4 SECTION CORNER	FOUND UNFOUND
CLOSING CORNER	FOUND UNFOUND
MEANDER CORNER	FOUND UNFOUND
CENTER OF SECTION	FOUND UNFOUND
1/16 SECTION CORNER FOUND	FOUND CALCULATED
RIGHT OF WAY MONUMENT	FOUND CALCULATED
PROPERTY CORNER PIN	FOUND CALCULATED
POWER POLE IN PLACE	FOUND CALCULATED
TELEPHONE POLE IN PLACE	FOUND CALCULATED
TELEGRAPH POLE IN PLACE	FOUND CALCULATED
LIGHT POLE	FOUND CALCULATED
PROPOSED CULVERT	---
EXISTING CULVERT	---
OUTLET DITCH	---
INLET DITCH	---
EXISTING DITCH	---
CHANNEL CHANGES	CH. CH.
DITCH BLOCK	---
RIPRAP	---
BRIDGES	---
RAILROADS	---
PARCEL NUMBERS	---
APPROACH: EXIST.-PROPOSED	---



### ASSOCIATED PROJECTS

STPHS 32(47) P. E.

### RELATED PROJECTS




[illegible]

STATE	RIGHT OF WAY	SHEET	TOTAL
MONTANA		NO.	SHEETS
		2	3
R/W ID.		STPHS 32(47)	
UNIFORM PROJECT NO.		5871-047-000	

2003 SAFETY IMPROVEMENTS SW OF MISSOULA

## RIGHT-OF-WAY COORDINATE ASCII FILES

R/W BREAK COORDS: 5871000ROBRKZ01.TXT  
R/W BASELINE COORDS: 5871000ROBASZ01.TXT  
ALL FILES ARE LOCATED ON THE CADD SERVER  
IN THE RO DIRECTORY, UNDER PROJECT: 5871000

CONSTRUCTION LIMITS		MAP REVISED	
CUT SECTION	TOP OF CUT		
TRANSITION			
TOE OF FILL			
BACKSLOPE LIMITS INCLUDE ROUNDING		FHWA/MDT APPROVAL	
		4/8/2013	
3	 MONTANA DEPARTMENT OF TRANSPORTATION	c:\dgn\5871000\roownz01.dgn	
2		4/19/2013	
1		8:21:05 AM CPS - U0034	

FOR EXISTING R/W RETRACEMENT, SEE  
COS 6306

# GRID STATE PLANE COORDINATES

THIS IS A STATE PLANE COORDINATE PROJECT. ALL  
DIMENSIONS, DISTANCES AND AREAS ON THIS PROJECT  
ARE GRID, EXCEPT FOR THE EXISTING R/W WIDTH  
DIMENSION, WHICH IS RECORD.  
THE COMBINATION SCALE FACTOR IS 0.99924747

NOTES:

1. THE PROPOSED R/W LINE WHERE A SPIRAL CURVE TRANSITION IS USED IS A CHORD RATHER THAN A CONCENTRIC CURVE.
2. ALL STATIONS AND OFFSETS FOR R/W BREAKS ARE IN REFERENCE TO THE R/W BASELINE.

MONTANA DEPARTMENT OF TRANSPORTATION  
RIGHT OF WAY PLAN  
MISSOULA COUNTY

