

PARCEL	NAME	ADDRESS	OWNERSHIP																SHEET NO.			
			TOTAL AREA		GROSS R/W AREA		EX. EASE. AREA		NET AREA		REMAINDER				CONST. PMT. AREA		EASE. AREA					
			METRIC	ENGLISH	METRIC	ENGLISH	METRIC	ENGLISH	METRIC	ENGLISH	LEFT		RIGHT		METRIC	ENGLISH	METRIC	ENGLISH				
1	GROSSWILER DAIRY, INC.	PO BOX 952, KALISPELL, MT 59903-0952	NEGOTIATIONS ONLY																		3, 5	
2	W.W.E.E, LLC	690 N MERIDIAN RD STE 103, KALISPELL, MT 59901-3508	OWNER NOTIFICATION ONLY																			3, 5
3	STATE OF MONTANA (DNRC)	655 TIMBERWOLF WAY STE 1, KALISPELL, MT 59901	64.750+ ha 160.00+ AC	0.909 ha 2.24 AC	0.183 ha 0.45 AC	0.726 ha 1.79 AC																3, 5
4	DWAYNE J. DRUCKENMILLER	391 STILLWATER RD, KALISPELL, MT 59901-2573	NEGOTIATIONS ONLY																			3, 5
5	KALISPELL NATIONAL INVESTMENT COMPANY, LLC	124 SWAN RIDGE CT, KALISPELL, MT 59901-7726	32.605 ha 80.569 AC	0.800 ha 1.98 AC		0.800 ha 1.98 AC	31.804 ha 78.589 AC							0.666 ha 1.65 AC								3-4
6	HELENA SPRINGS	5150 SW GRIFFITH DR, BEAVERTON, OR 97005-2935	3.296 ha 8.15 AC	0.223 ha 0.55 AC		0.223 ha 0.55 AC						3.073 ha 7.60 AC		0.164 ha 0.41 AC								3-4
7	TOUCHMARK AT SUMMIT RIDGE, LLC	5150 SW GRIFFITH DR, BEAVERTON, OR 97005-2935	8.239 ha 20.36 AC	0.328 ha 0.81 AC		0.328 ha 0.81 AC						7.911 ha 19.55 AC		0.221 ha 0.55 AC								4
8	BRIDGELAND DEVELOPMENT, LLP	PO BOX 1117, WHITEFISH, MT 59937-1117	OWNER NOTIFICATION ONLY																			4
9	STATE OF MONTANA (DNRC)	655 TIMBERWOLF WAY STE 1, KALISPELL, MT 59901-1215	55.029 ha 135.98 AC	0.651 ha 1.61 AC		0.651 ha 1.61 AC	54.378 ha 134.37 AC															4
9-L1	CITY OF KALISPELL	655 PO BOX 1997, KALISPELL, MT 59903	OWNER NOTIFICATION ONLY																			4
3, 9	COMBINATION PARCEL		64.750+ ha 160.00+ AC	1.560 ha 3.85 AC	0.183 ha 0.45 AC	1.377 ha 3.40 AC																3-4

STATE	RIGHT OF WAY ID.	SHEET NO.	TOTAL SHEETS
MONTANA	STPU 6735(4)	2	5

PROJECT NUMBER 8166-004-000

FOUR MILE DR - KALISPELL

RIGHT-OF-WAY COORDINATE ASCII FILES

R/W BREAK COORDS: 8166000ROBRKZ01.TXT

R/W BASELINE COORDS: 8166000ROBASZ01.TXT

ALL FILES ARE LOCATED ON THE CADD SERVER IN THE RO DIRECTORY, UNDER PROJECT: 8166000

① 0.726 ha (1.79 AC) TO BE ACQUIRED IN THE NAME OF THE CITY OF KALISPELL

② TO BE ACQUIRED IN THE NAME OF THE CITY OF KALISPELL

GRID STATE PLANE COORDINATES

THIS IS A STATE PLANE COORDINATE PROJECT. ALL DIMENSIONS, DISTANCES AND AREAS ON THIS PROJECT ARE GRID, EXCEPT FOR THE EXISTING R/W WIDTH DIMENSION, WHICH IS RECORD. THE COMBINATION SCALE FACTOR IS 0.999470385

FOR EXISTING R/W RETRACEMENT, SEE CERTIFICATE OF SURVEY 18244

- NOTES:
1. ALL MEASUREMENTS ARE METRIC EXCEPT AS NOTED
 2. THE PROPOSED R/W LINE WHERE A SPIRAL CURVE TRANSITION IS USED IS A CHORD RATHER THAN A CONCENTRIC CURVE.
 3. THE ENGLISH AREAS ARE FOR INFORMATIONAL PURPOSES ONLY.
 4. ALL STATIONS AND OFFSETS FOR R/W BREAKS ARE IN REFERENCE TO THE R/W BASELINE.

BACKSLOPE LIMITS INCLUDE ROUNDING	CONSTRUCTION LIMITS: CUT SECTION	TOE OF FILL
		TOP OF CUT DITCH BOTTOM
FHWA/DOT APPROVAL	8/27/14	
MAP REVISED	12/18/14 2/16/15 7/6/15	

MONTANA DEPARTMENT OF TRANSPORTATION
RIGHT OF WAY PLAN
FLATHEAD COUNTY

STATE	RIGHT OF WAY ID.	SHEET NO.	TOTAL SHEETS
MONTANA	STPU 6735 (4)	3	5
PROJECT NUMBER 8166-004-000		FOUR MILE DR - KALISPELL	

SEE SHEET NO. 2 FOR OWNERSHIP NAMES, ADDRESSES, AREAS, ETC.

P.O.C. 16+96.56 IS S 86°13'25" E
18.60 m FROM THE SW CLOSING CORNER
OF SECTION 36. (FND MDT ALUM MON)

P.O.C. 16+96.56 IS N 86°13'25" W
786.55m FROM THE S1/4 CLOSING CORNER
OF SECTION 36. (FND MDT ALUM MON)

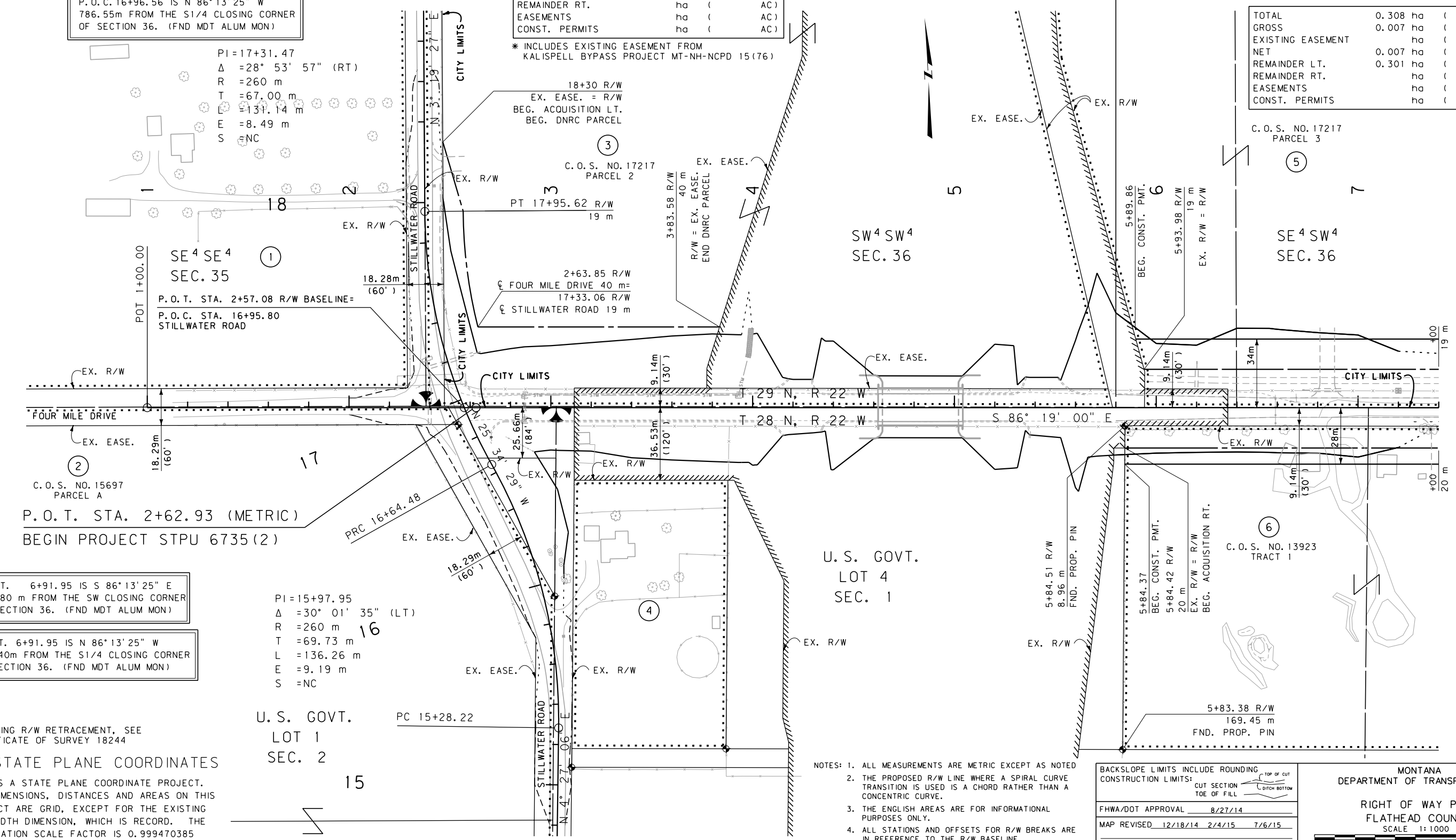
TOTAL	12.151 ha	(30.02 AC)
GROSS	0.909 ha	(2.24 AC)
EXISTING EASEMENT*	4.970 ha	(12.28 AC)
NET	0.726 ha	(1.79 AC)
REMAINDER LT.	6.455 ha	(15.95 AC)
REMAINDER RT.	ha	(AC)
EASEMENTS	ha	(AC)
CONST. PERMITS	ha	(AC)

* INCLUDES EXISTING EASEMENT FROM
KALISPELL BYPASS PROJECT MT-NH-NCPD 15(76)

FOUR MILE DRIVE - WEST SECTION STPU 6735 (5)
UPN 8166001

FOUR MILE DRIVE - EAST SECTION STPU 6735 (6)
UPN 8166002

TOTAL	0.308 ha	(0.76 AC)
GROSS	0.007 ha	(0.02 AC)
EXISTING EASEMENT	ha	(AC)
NET	0.007 ha	(0.02 AC)
REMAINDER LT.	0.301 ha	(0.74 AC)
REMAINDER RT.	ha	(AC)
EASEMENTS	ha	(AC)
CONST. PERMITS	ha	(AC)



SE⁴ SE⁴ SEC. 35
P.O.T. STA. 2+57.08 R/W BASELINE=
P.O.C. STA. 16+95.80 STILLWATER ROAD

C.O.S. NO. 15697 PARCEL A
P.O.T. STA. 2+62.93 (METRIC)
BEGIN PROJECT STPU 6735(2)

P.O.T. 6+91.95 IS S 86°13'25" E
453.80 m FROM THE SW CLOSING CORNER
OF SECTION 36. (FND MDT ALUM MON)

P.O.T. 6+91.95 IS N 86°13'25" W
351.40m FROM THE S1/4 CLOSING CORNER
OF SECTION 36. (FND MDT ALUM MON)

PI=15+97.95
Δ = 30° 01' 35" (LT)
R = 260 m
T = 69.73 m
L = 136.26 m
E = 9.19 m
S = NC

U.S. GOVT.
LOT 1
SEC. 2

U.S. GOVT.
LOT 4
SEC. 1

C.O.S. NO. 13923
TRACT 1

FOR EXISTING R/W RETRACEMENT, SEE
CERTIFICATE OF SURVEY 18244

GRID STATE PLANE COORDINATES

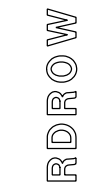
THIS IS A STATE PLANE COORDINATE PROJECT.
ALL DIMENSIONS, DISTANCES AND AREAS ON THIS
PROJECT ARE GRID, EXCEPT FOR THE EXISTING
R/W WIDTH DIMENSION, WHICH IS RECORD. THE
COMBINATION SCALE FACTOR IS 0.999470385

- NOTES:
1. ALL MEASUREMENTS ARE METRIC EXCEPT AS NOTED
 2. THE PROPOSED R/W LINE WHERE A SPIRAL CURVE TRANSITION IS USED IS A CHORD RATHER THAN A CONCENTRIC CURVE.
 3. THE ENGLISH AREAS ARE FOR INFORMATIONAL PURPOSES ONLY.
 4. ALL STATIONS AND OFFSETS FOR R/W BREAKS ARE IN REFERENCE TO THE R/W BASELINE.

BACKSLOPE LIMITS INCLUDE ROUNDING	
CONSTRUCTION LIMITS:	CUT SECTION TOP OF CUT TOE OF FILL DITCH BOTTOM
FHWA/DOT APPROVAL	8/27/14
MAP REVISED	12/18/14 2/4/15 7/6/15

MONTANA
DEPARTMENT OF TRANSPORTATION

RIGHT OF WAY PLAN
FLATHEAD COUNTY
SCALE 1:1000



c:\dgn\8166000\ropinz01.dgn
7/8/2015
2:13:19 PM
3
2
1

STATE	RIGHT OF WAY ID.	SHEET NO.	TOTAL SHEETS
MONTANA	STPU 6735(4)	5	5
PROJECT NUMBER 8166-004-000			

FOUR MILE DR - KALISPELL

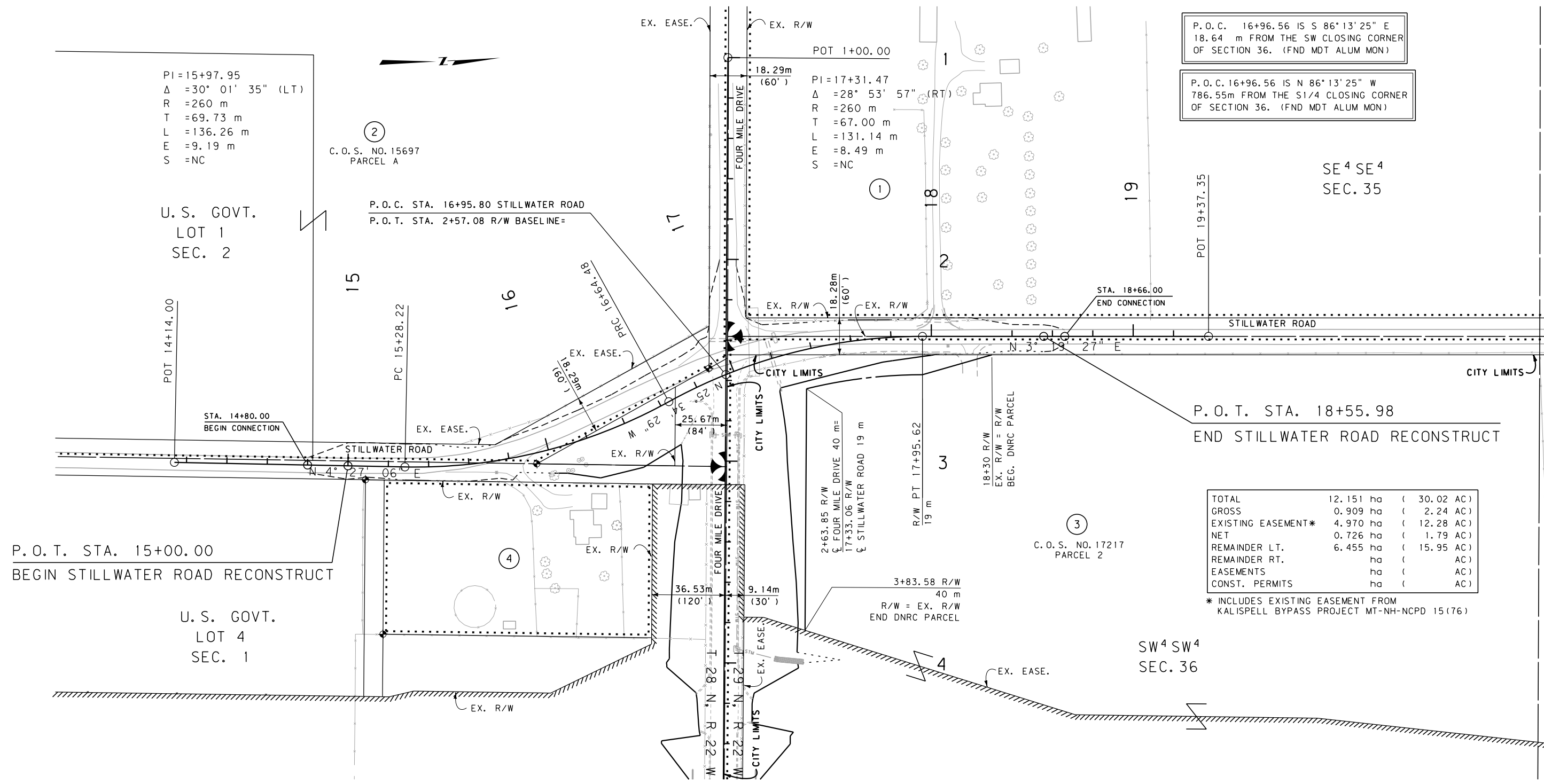
SEE SHEET NO. 2 FOR OWNERSHIP NAMES, ADDRESSES, AREAS, ETC.

MDTA MONTANA DEPARTMENT OF TRANSPORTATION
 CADD

RDROW



C:\dgn\8166000\00\planz01.dgn
 7/8/2015 2:13:27 PM
 1 N 3 CPS - U0034



P.O.C. 16+96.56 IS S 86°13'25" E
18.64 m FROM THE SW CLOSING CORNER
OF SECTION 36. (FND MDT ALUM MON)

P.O.C. 16+96.56 IS N 86°13'25" W
786.55m FROM THE S1/4 CLOSING CORNER
OF SECTION 36. (FND MDT ALUM MON)

TOTAL	12.151 ha	(30.02 AC)
GROSS	0.909 ha	(2.24 AC)
EXISTING EASEMENT*	4.970 ha	(12.28 AC)
NET	0.726 ha	(1.79 AC)
REMAINDER LT.	6.455 ha	(15.95 AC)
REMAINDER RT.	ha	(AC)
EASEMENTS	ha	(AC)
CONST. PERMITS	ha	(AC)

* INCLUDES EXISTING EASEMENT FROM KALISPELL BYPASS PROJECT MT-NH-NCPD 15(76)

GRID STATE PLANE COORDINATES

THIS IS A STATE PLANE COORDINATE PROJECT. ALL DIMENSIONS, DISTANCES AND AREAS ON THIS PROJECT ARE GRID, EXCEPT FOR THE EXISTING R/W WIDTH DIMENSION, WHICH IS RECORD. THE COMBINATION SCALE FACTOR IS 0.999470385

FOR EXISTING R/W RETRACEMENT, SEE CERTIFICATE OF SURVEY 18244

- NOTES:
1. ALL MEASUREMENTS ARE METRIC EXCEPT AS NOTED
 2. THE PROPOSED R/W LINE WHERE A SPIRAL CURVE TRANSITION IS USED IS A CHORD RATHER THAN A CONCENTRIC CURVE.
 3. THE ENGLISH AREAS ARE FOR INFORMATIONAL PURPOSES ONLY.
 4. ALL STATIONS AND OFFSETS FOR R/W BREAKS ARE IN REFERENCE TO THE R/W BASELINE.

BACKSLOPE LIMITS INCLUDE ROUNDING	CONSTRUCTION LIMITS:
	CUT SECTION TOE OF FILL
FHWA/DOT APPROVAL	8/27/14
MAP REVISED	12/18/14

MONTANA DEPARTMENT OF TRANSPORTATION

RIGHT OF WAY PLAN
FLATHEAD COUNTY
SCALE 1:1000