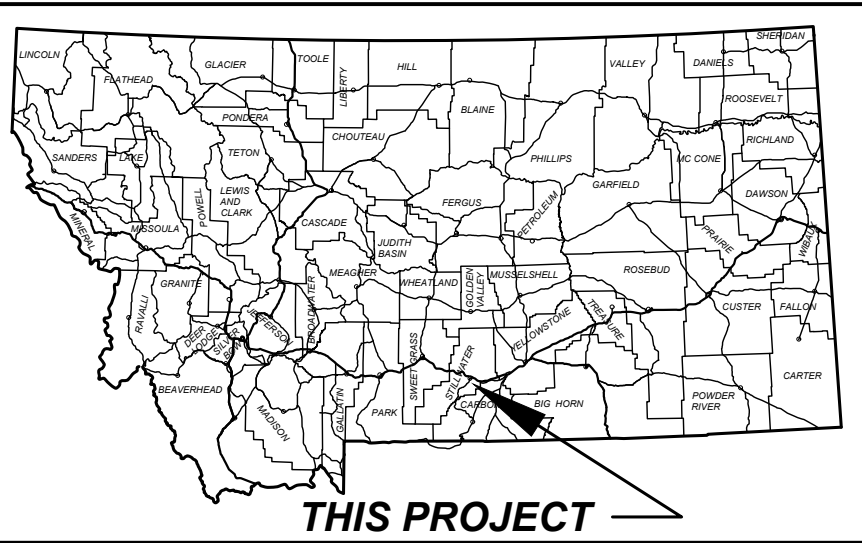


GRID STATE PLANE COORDINATES
THIS IS A STATE PLANE COORDINATE PROJECT. ALL
DIMENSIONS, DISTANCES AND AREAS ON THIS PROJECT
ARE GRID, EXCEPT FOR THE EXISTING R/W WIDTH
DIMENSION, WHICH IS RECORD.
THE COMBINATION SCALE FACTOR IS 0.99952355

MONTANA DEPARTMENT OF TRANSPORTATION

RIGHT OF WAY PLAN FEDERAL AID PROJECT HSIP 421-1(14)5 SF 159 SE COLUMBUS SHLDR WID STILLWATER COUNTY

LENGTH 2.1 MILES



PLAN LEGEND

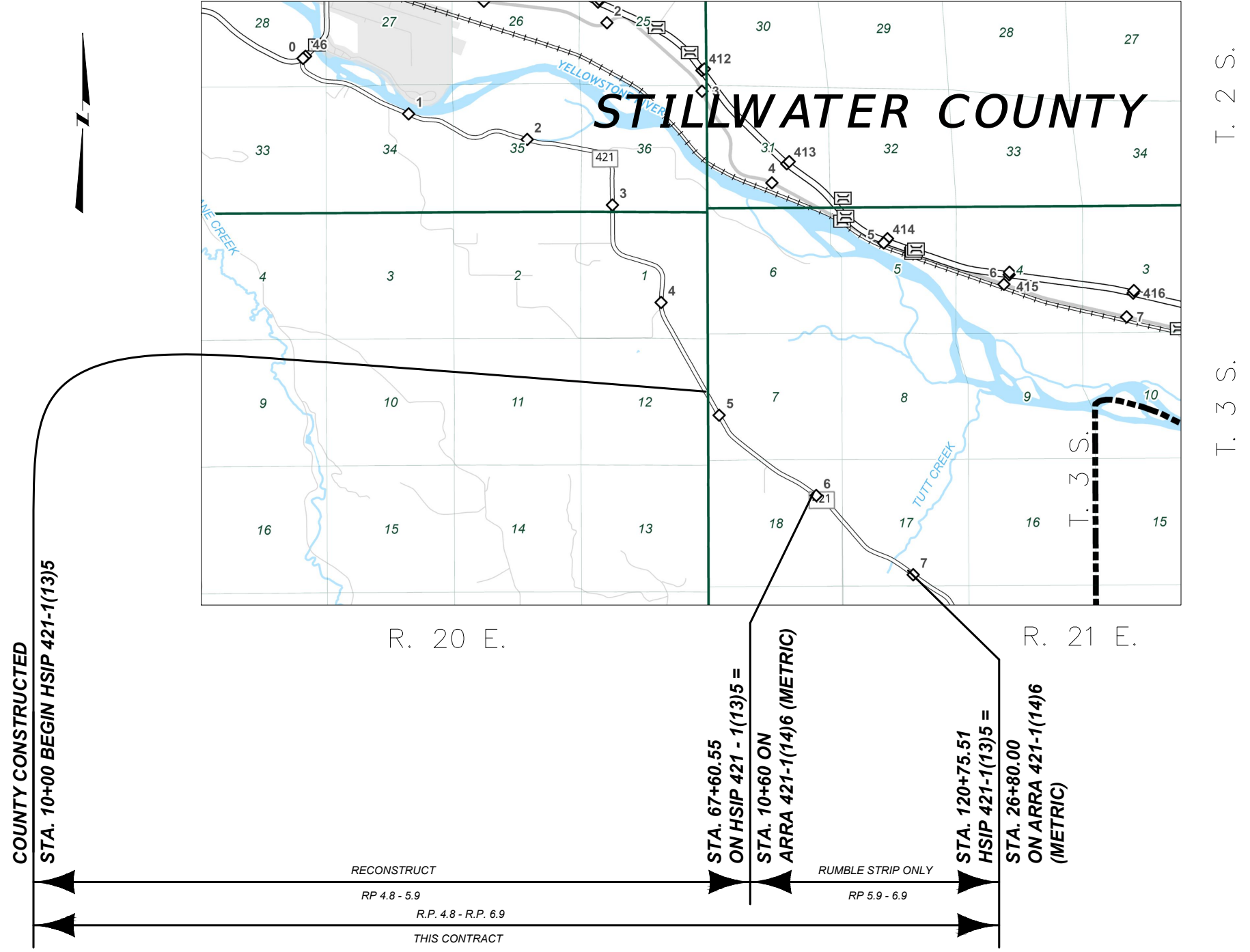
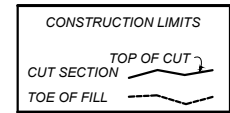
- PROPOSED RIGHT OF WAY LINE
- EXISTING RIGHT OF WAY LINE
- RAILROAD RIGHT OF WAY LINE
- RIGHT OF WAY BASELINE
- SECTION LINE
- OWNERSHIP BOUNDARY
- FULL ACCESS CONTROL
- LIMITED ACCESS CONTROL
- EXISTING FULL ACCESS CONTROL
- EXISTING LIMITED ACCESS CONTROL
- SECTION CORNER
- 1/4 SECTION CORNER
- CLOSING CORNER
- MEANDER CORNER
- CENTER OF SECTION
- 1/6 SECTION CORNER FOUND
- RIGHT OF WAY MONUMENT
- PROPERTY CORNER PIN
- PARCEL NUMBERS
- RAILROADS
- EXISTING DITCH

ASSOCIATED PROJECT AGREEMENT NUMBERS

R/W	HSIP 421-1(14)5
I. C.	
P. E.	HSIP 421-1(12)5

RELATED PROJECTS

STPS 421-1(5)6



COUNTY CONSTRUCTED
STA. 10+00 BEGIN HSIP 421-1(13)5

STA. 67+60.55 ON HSIP 421 - 1(13)5 =
STA. 10+60 ON ARRA 421-1(14)6 (METRIC)
STA. 120+75.51 HSIP 421-1(13)5 =
STA. 26+80.00 ON ARRA 421-1(14)6 (METRIC)

RECONSTRUCT RP 4.8 - 5.9 R.P. 4.8 - R.P. 6.9
RUMBLE STRIP ONLY RP 5.9 - 6.9
THIS CONTRACT

FOR EXISTING R/W RETRACEMENT, SEE C.O.S. 385611

<p>MONTANA Department of Transportation</p>	PROJECT NAME	SF 159 SE COLUMBUS SHLDR WID
	COUNTY	STILLWATER
	PROJECT ID	HSIP 421-1(14)5
	UPN	9116-014-000
<p>RIGHT OF WAY PLAN</p>		

FHWA/MDT APPROVAL: 04/10/2024
MAP REVISED:
9116000R0TTL001.DWG
6/6/2024 7:56 AM

GRID STATE PLANE COORDINATES
THIS IS A STATE PLANE COORDINATE PROJECT. ALL
DIMENSIONS, DISTANCES AND AREAS ON THIS PROJECT
ARE GRID, EXCEPT FOR THE EXISTING RW WIDTH
DIMENSION, WHICH IS RECORD.
THE COMBINATION SCALE FACTOR IS 0.99952355

PROJECT NAME
SF 159 SE COLUMBUS SHLDR WID

COUNTY
STILLWATER

PROJECT ID
HSP 421-1(14)5

UPN
9116-014-000

FHW/MDT APPROVAL: 04/10/2024

MAP REVISED: 05/22/24 06/06/24

11/14/24 12/17/24

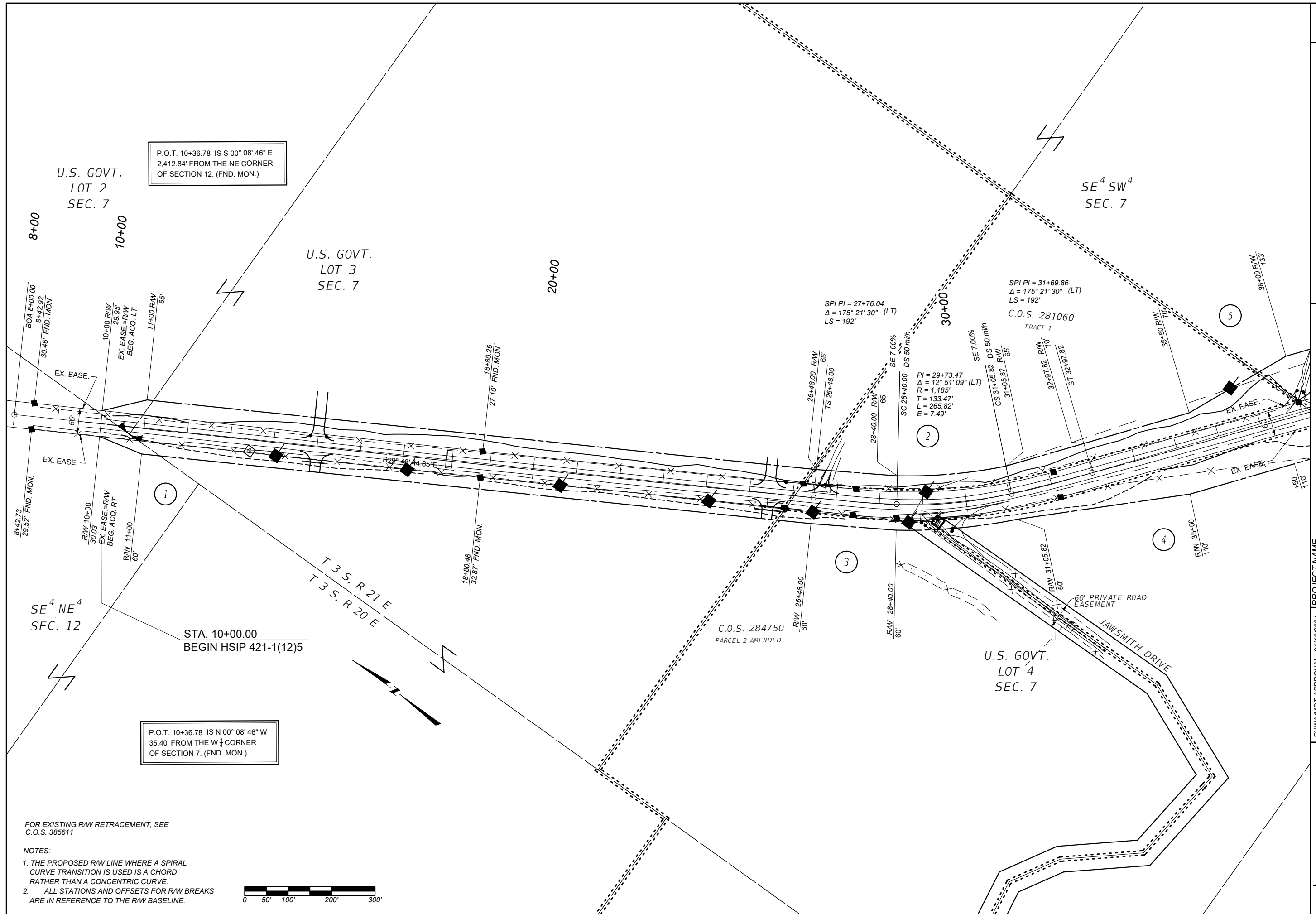
9116000ROPLN001.DWG

MONTANA
Department of Transportation



RIGHT OF WAY PLAN

12/17/2024 7:44 AM



P.O.T. 10+36.78 IS S 00° 08' 46" E
2,412.84' FROM THE NE CORNER
OF SECTION 12. (FND. MON.)

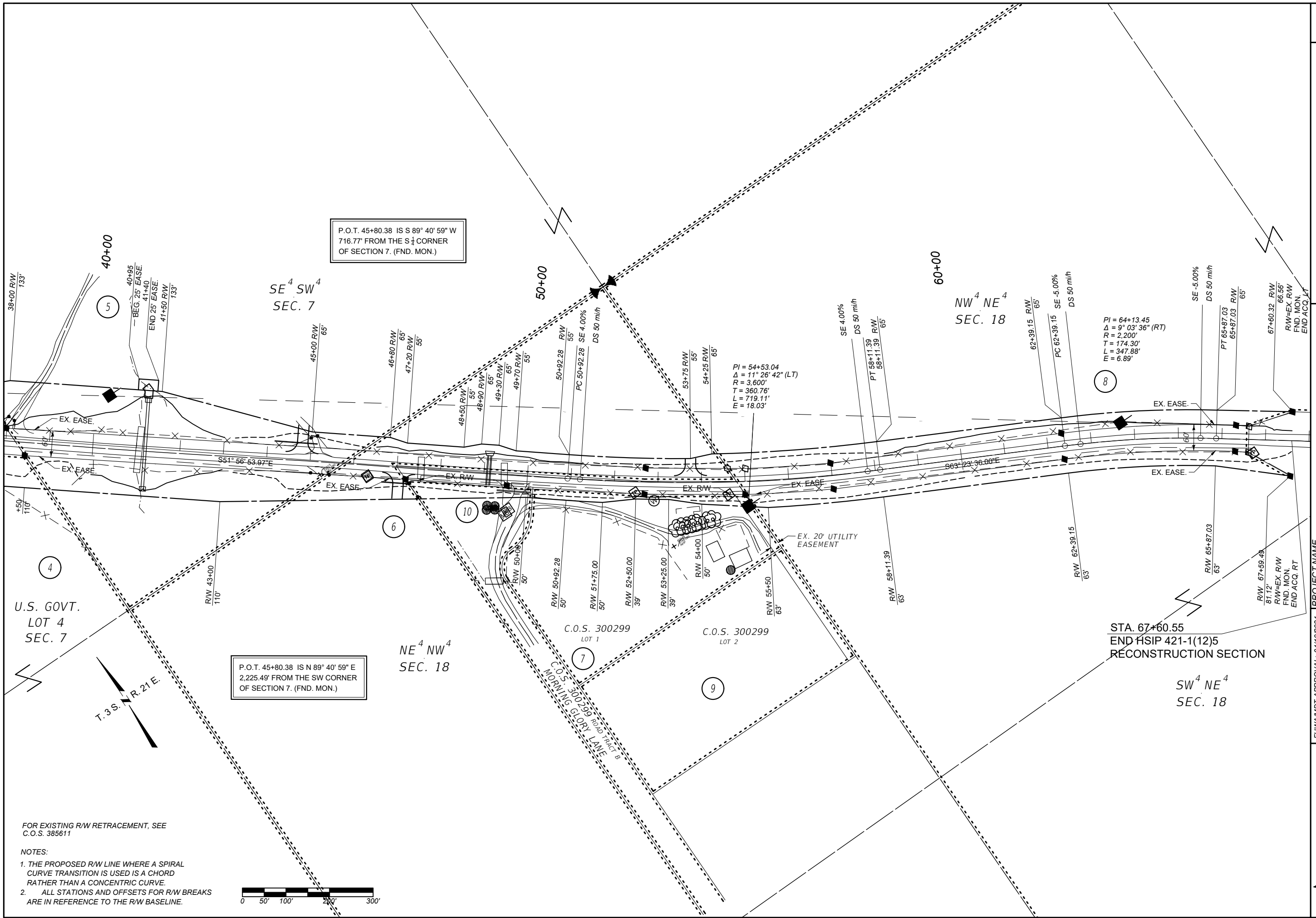
P.O.T. 10+36.78 IS N 00° 08' 46" W
35.40' FROM THE W 1/4 CORNER
OF SECTION 7. (FND. MON.)

FOR EXISTING R/W RETRACEMENT, SEE
C.O.S. 385611

- NOTES:
- 1. THE PROPOSED R/W LINE WHERE A SPIRAL CURVE TRANSITION IS USED IS A CHORD RATHER THAN A CONCENTRIC CURVE.
 - 2. ALL STATIONS AND OFFSETS FOR R/W BREAKS ARE IN REFERENCE TO THE R/W BASELINE.



GRID STATE PLANE COORDINATES
THIS IS A STATE PLANE COORDINATE PROJECT. ALL
DIMENSIONS, DISTANCES AND AREAS ON THIS PROJECT
ARE GRID, EXCEPT FOR THE EXISTING RW WIDTH
DIMENSION, WHICH IS RECORD.
THE COMBINATION SCALE FACTOR IS 0.99952355



P.O.T. 45+80.38 IS S 89° 40' 59" W
716.77' FROM THE S 1/4 CORNER
OF SECTION 7. (FND. MON.)

P.O.T. 45+80.38 IS N 89° 40' 59" E
2,225.49' FROM THE SW CORNER
OF SECTION 7. (FND. MON.)

PI = 54+53.04
Δ = 11° 26' 42" (LT)
R = 3,600'
T = 360.76'
L = 719.11'
E = 18.03'

PI = 64+13.45
Δ = 9° 03' 36" (RT)
R = 2,200'
T = 174.30'
L = 347.88'
E = 6.89'

FOR EXISTING R/W RETRACEMENT, SEE
C.O.S. 385611

- NOTES:
1. THE PROPOSED R/W LINE WHERE A SPIRAL CURVE TRANSITION IS USED IS A CHORD RATHER THAN A CONCENTRIC CURVE.
 2. ALL STATIONS AND OFFSETS FOR R/W BREAKS ARE IN REFERENCE TO THE R/W BASELINE.



PROJECT NAME: **SF 159 SE COLUMBUS SHLDR WID**
 COUNTY: **STILLWATER**
 PROJECT ID: **HSP 421-1(14)5**
 UPN: **9116-014-000**

FHWA/MDT APPROVAL: 04/10/2024
 MAP REVISED: 05/22/24 06/06/24
 11/14/24

MONTANA
 Department of Transportation

RIGHT OF WAY PLAN

12/17/2024 7:44 AM