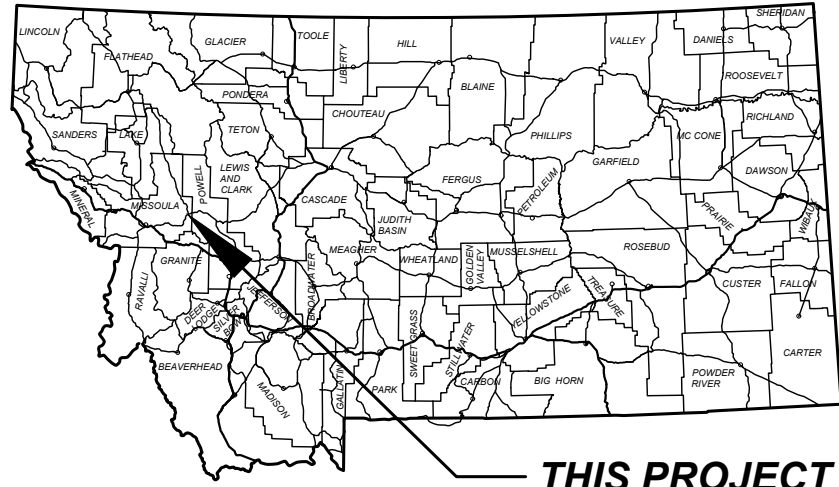


GRID STATE PLANE COORDINATES  
THIS IS A STATE PLANE COORDINATE PROJECT. ALL DIMENSIONS, DISTANCES AND AREAS ON THIS PROJECT ARE GRID. EXCEPT FOR THE EXISTING RW WIDTH DIMENSION, WHICH IS RECORD.  
THE COMBINATION SCALE FACTOR IS 0.99920470.

# MONTANA DEPARTMENT OF TRANSPORTATION

## RIGHT OF WAY PLAN FEDERAL AID PROJECT HSIP STW-0(050) SF 179 CLEARWATER JCT INTX MISSOULA COUNTY



THIS PROJECT

### PLAN LEGEND

- PROPOSED RIGHT OF WAY LINE
- EXISTING RIGHT OF WAY LINE
- RAILROAD RIGHT OF WAY LINE
- RIGHT OF WAY BASELINE
- SECTION LINE
- OWNERSHIP BOUNDARY
- FULL ACCESS CONTROL
- LIMITED ACCESS CONTROL
- EXISTING FULL ACCESS CONTROL
- EXISTING LIMITED ACCESS CONTROL
- SECTION CORNER
- FOUND SECTION CORNER
- CLOSING CORNER
- MEANDER CORNER
- CENTER OF SECTION
- 1/8 SECTION CORNER FOUND
- RIGHT OF WAY MONUMENT
- PROPERTY CORNER PIN
- PARCEL NUMBERS
- RAILROADS
- EXISTING DITCH
- CONSTRUCTION LIMITS
- CUT SECTION
- TOE OF FILL

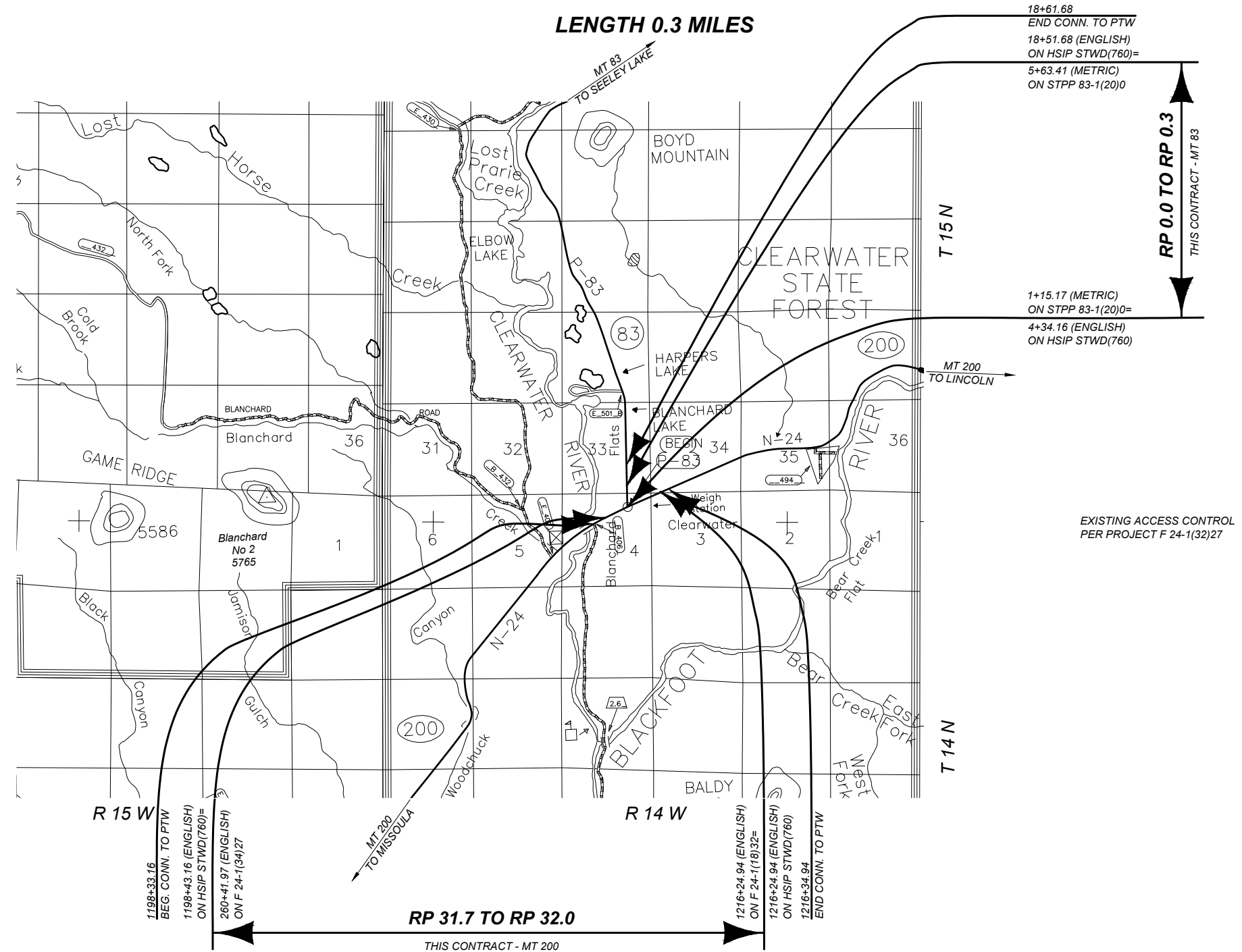
### ASSOCIATED PROJECT AGREEMENT NUMBERS

R/W	HSIP STW-0(050)
I. C.	
P. E.	HSIP STWD(760)

### RELATED PROJECTS

- STPP 83-1(18)0
- F 24-1(17)32
- F 24-1(19)32
- F 24-1(32)27
- F 237(15)
- FAP 237G
- S 65(1)

FOR EXISTING R/W RETRACEMENT, SEE CERTIFICATE OF SURVEY 6969.



FHWA/MDT APPROVAL: 5/17/2025  
MAP REVISED:

MONTANA Department of Transportation  
RIGHT OF WAY PLAN  
6/5/2025 8:43 AM



GRID STATE PLANE COORDINATES  
THIS IS A STATE PLANE COORDINATE PROJECT. ALL  
DIMENSIONS, DISTANCES AND AREAS ON THIS PROJECT  
ARE GRID, EXCEPT FOR THE EXISTING RW WIDTH  
DIMENSION, WHICH IS RECORD.  
THE COMBINATION SCALE FACTOR IS 0.99920470.

PROJECT NAME  
**SF 179 CLEARWATER JCT INTX**

COUNTY  
**MISSOULA COUNTY**

PROJECT ID  
**HSIP STW-0(050)**

UPN  
**9613-050-001**

FHWAMDT APPROVAL: 5/1/2025

MAP REVISED:

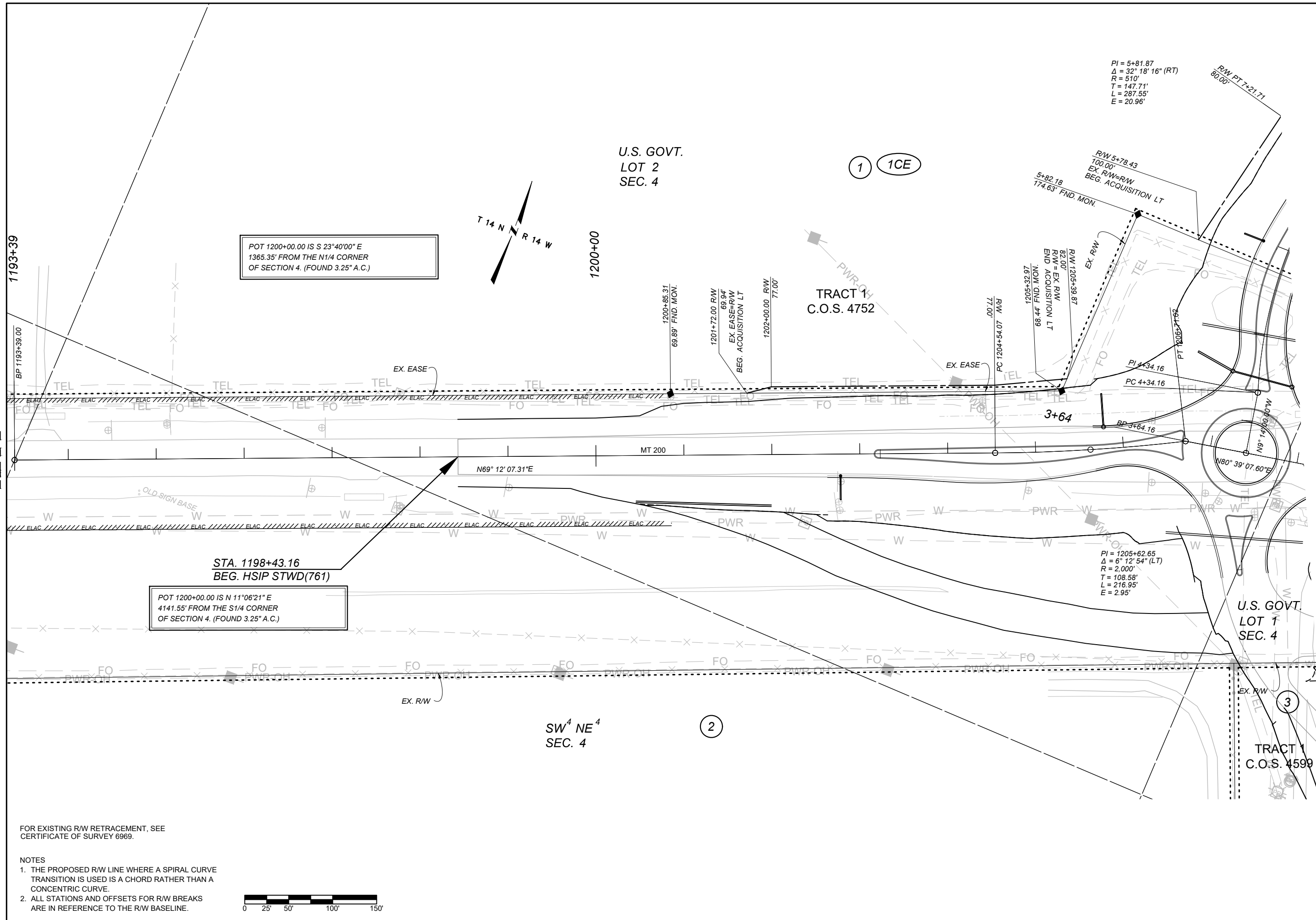
9613001ROPLN201.DWG

**MONTANA**  
Department of Transportation



**RIGHT OF WAY PLAN**

6/5/2025 8:47 AM



POT 1200+00.00 IS S 23°40'00" E  
1365.35' FROM THE N1/4 CORNER  
OF SECTION 4. (FOUND 3.25" A.C.)

POT 1200+00.00 IS N 11°06'21" E  
4141.55' FROM THE S1/4 CORNER  
OF SECTION 4. (FOUND 3.25" A.C.)

STA. 1198+43.16  
BEG. HSIP STWD(761)

U.S. GOVT.  
LOT 2  
SEC. 4

TRACT 1  
C.O.S. 4752

U.S. GOVT.  
LOT 1  
SEC. 4

TRACT 1  
C.O.S. 4599

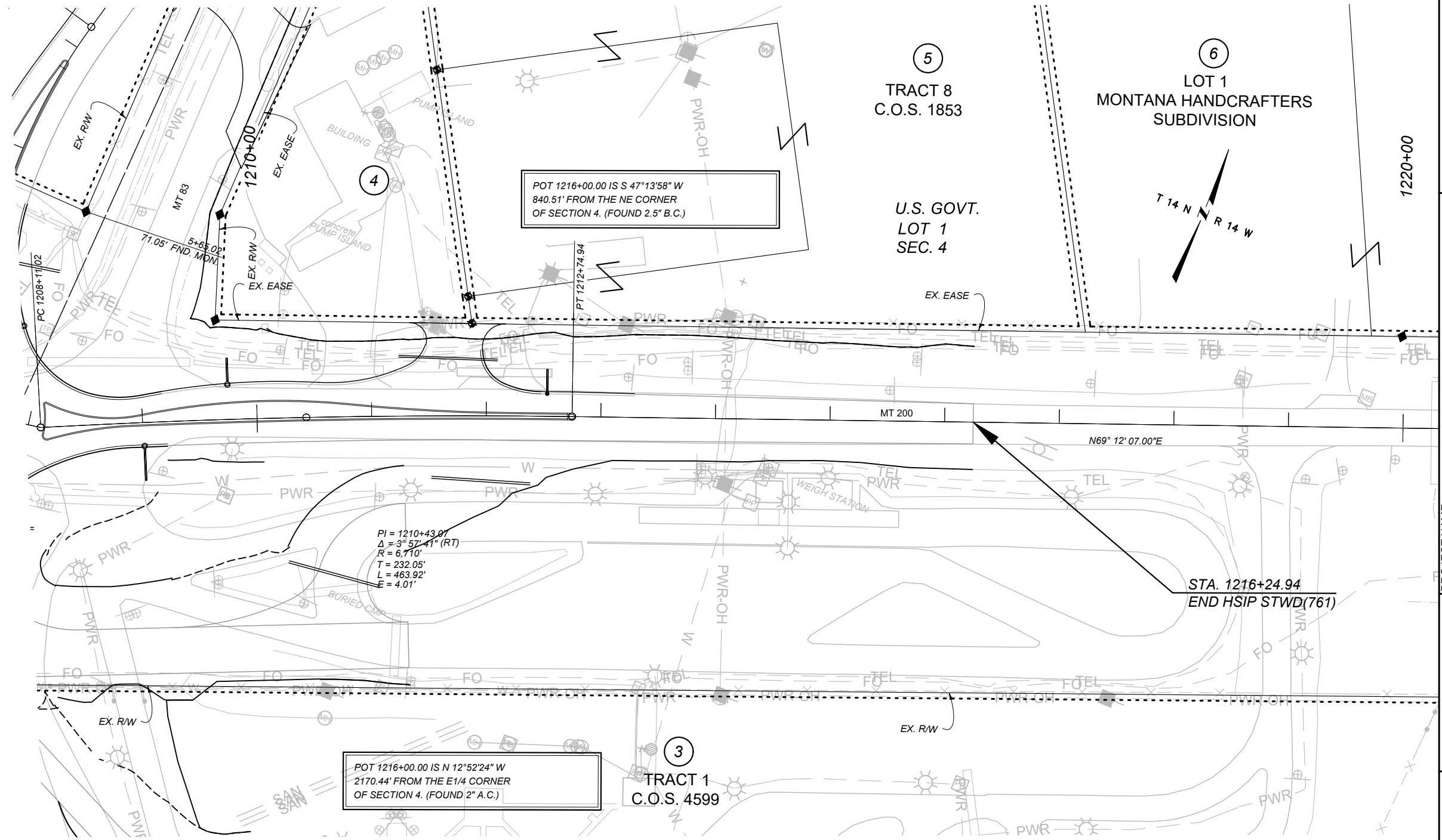


FOR EXISTING R/W RETRACEMENT, SEE  
CERTIFICATE OF SURVEY 6969.

- NOTES
1. THE PROPOSED R/W LINE WHERE A SPIRAL CURVE TRANSITION IS USED IS A CHORD RATHER THAN A CONCENTRIC CURVE.
  2. ALL STATIONS AND OFFSETS FOR R/W BREAKS ARE IN REFERENCE TO THE R/W BASELINE.

**RPA**

GRID STATE PLANE COORDINATES  
THIS IS A STATE PLANE COORDINATE PROJECT. ALL  
DIMENSIONS, DISTANCES AND AREAS ON THIS PROJECT  
ARE GRID, EXCEPT FOR THE EXISTING R/W WIDTH  
DIMENSION, WHICH IS RECORD.  
THE COMBINATION SCALE FACTOR IS 0.99920470.



POT 1216+00.00 IS S 47°13'58" W  
840.51' FROM THE NE CORNER  
OF SECTION 4. (FOUND 2.5" B.C.)

PI = 1210+43.07  
Δ = 3° 57' 41" (RT)  
R = 6,710'  
T = 232.05'  
L = 463.92'  
E = 4.01'

POT 1216+00.00 IS N 12°52'24" W  
2170.44' FROM THE E1/4 CORNER  
OF SECTION 4. (FOUND 2" A.C.)

FOR EXISTING R/W RETRACEMENT, SEE  
CERTIFICATE OF SURVEY 6969.

NOTES

1. THE PROPOSED R/W LINE WHERE A SPIRAL CURVE TRANSITION IS USED IS A CHORD RATHER THAN A CONCENTRIC CURVE.
2. ALL STATIONS AND OFFSETS FOR R/W BREAKS ARE IN REFERENCE TO THE R/W BASELINE.



PROJECT NAME	SF 179 CLEARWATER JCT INTX
COUNTY	MISSOULA COUNTY
PROJECT ID	HSIP STW-0(050)
UPN	9613-050-001

FHWAMDT APPROVAL:	5/1/2025
MAP REVISED:	

**MONTANA**  
Department of Transportation

**RIGHT OF WAY PLAN**

9613001ROPLN201.DWG  
6/5/2025 8:47 AM

GRID STATE PLANE COORDINATES  
THIS IS A STATE PLANE COORDINATE PROJECT. ALL  
DIMENSIONS, DISTANCES AND AREAS ON THIS PROJECT  
ARE GRID, EXCEPT FOR THE EXISTING R/W WIDTH  
DIMENSION, WHICH IS RECORD.  
THE COMBINATION SCALE FACTOR IS 0.99920470.

PROJECT NAME  
SF 179 CLEARWATER JCT INTX

COUNTY  
MISSOULA COUNTY

PROJECT ID  
HSIP STW-0(050)

UPN  
9613-050-001

FHWAMDT APPROVAL: 5/1/2025

MAP REVISED:

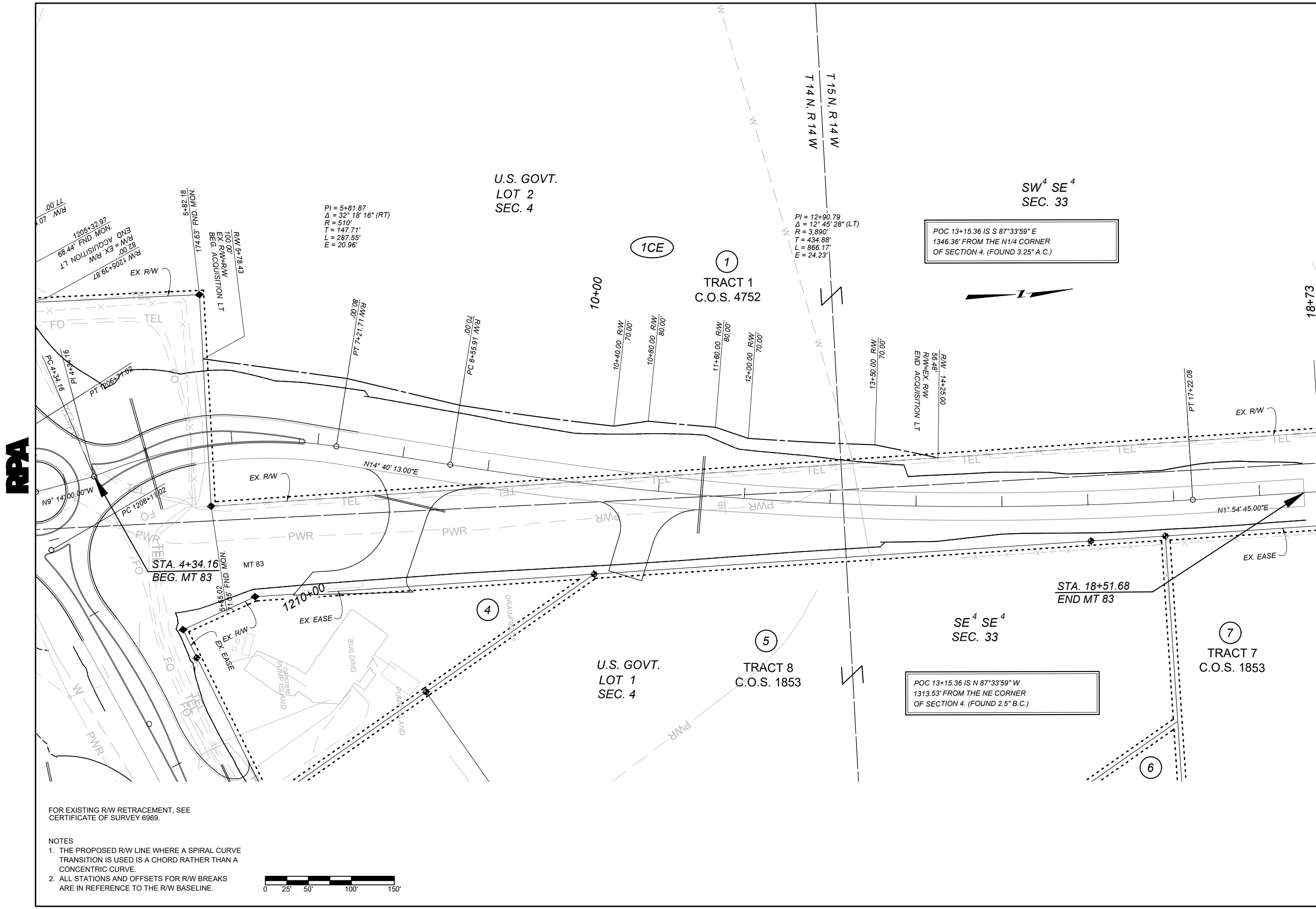
9613001ROPLNZ02.DWG

MONTANA  
Department of Transportation



RIGHT OF WAY PLAN

6/5/2025 8:52 AM



RPA

FOR EXISTING R/W RETRACEMENT, SEE  
CERTIFICATE OF SURVEY 6969.

- NOTES
1. THE PROPOSED R/W LINE WHERE A SPIRAL CURVE TRANSITION IS USED IS A CHORD RATHER THAN A CONCENTRIC CURVE.
  2. ALL STATIONS AND OFFSETS FOR R/W BREAKS ARE IN REFERENCE TO THE R/W BASELINE.

