

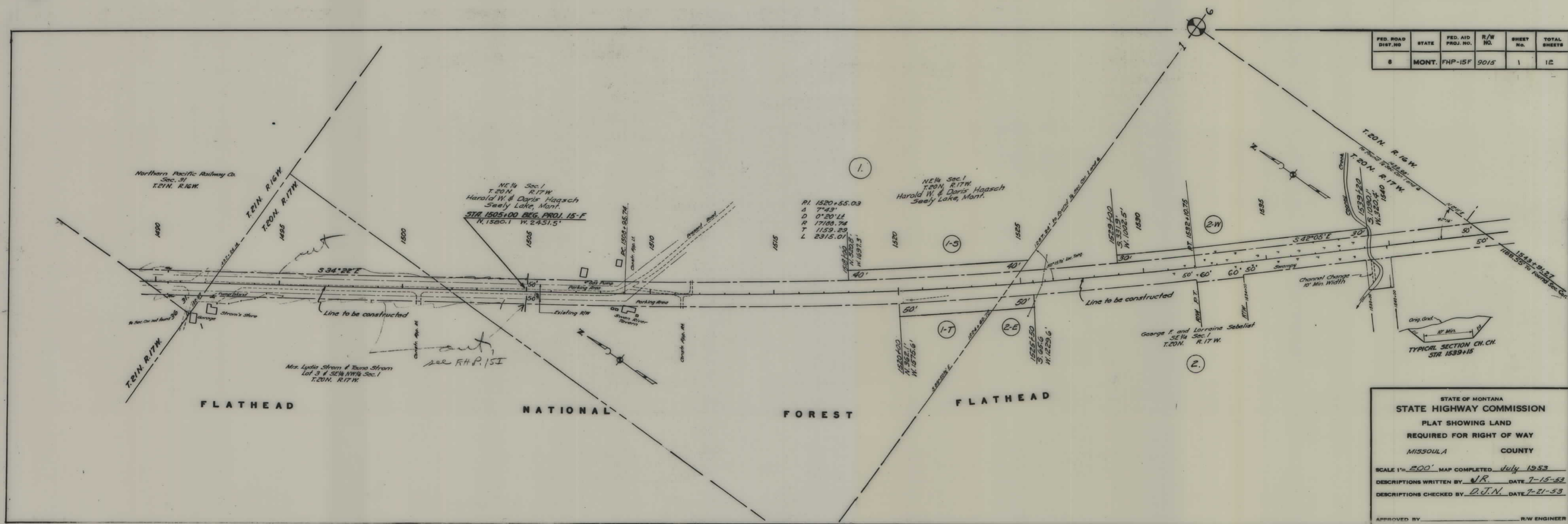
PLANS

NOT

TO

SCALE

FED. ROAD DIST. NO.	STATE	FED. AID PROJ. NO.	R/W NO.	SHEET No.	TOTAL SHEETS
8	MONT.	FHP-15F	9015	1	12



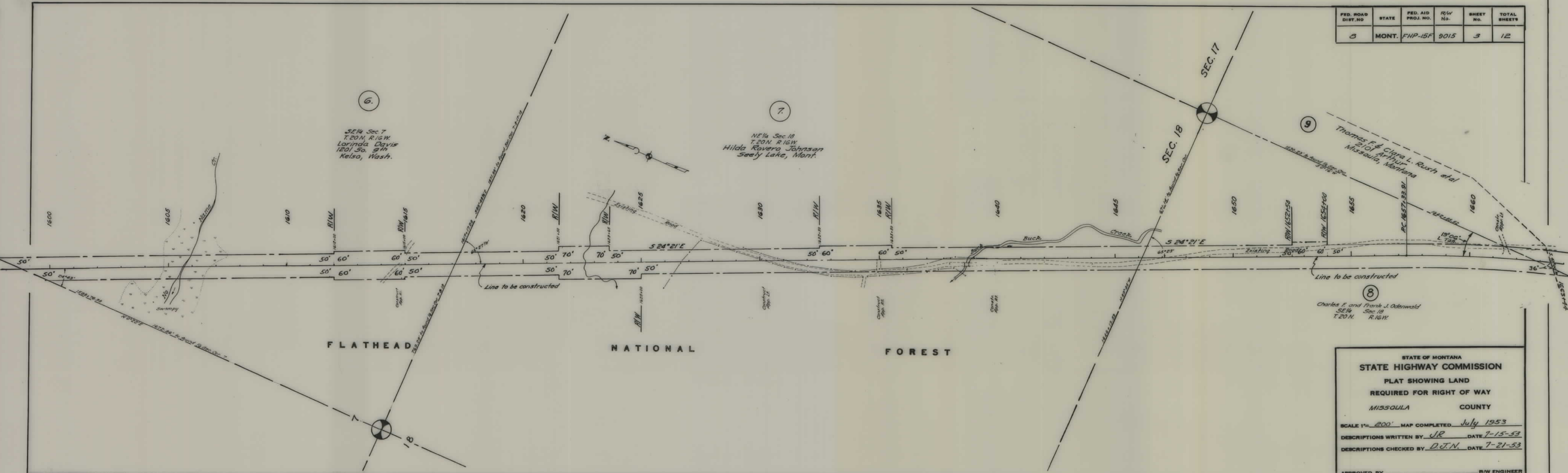
FED. ROAD DIST. NO.	STATE	FED. AID PROJ. NO.	R/W No.	SHEET No.	TOTAL SHEETS
3	MONT.	FHP-15F	9015	3	12

6.
SE 1/4 Sec. 7
T. 20 N. R. 16 W.
Lorinda Davis
1201 So. 9th
Kelso, Wash.

7.
NE 1/4 Sec. 18
T. 20 N. R. 16 W.
Hilda Rovero Johnson
Seely Lake, Mont.

9
Thomas F. & Clara L. Rush et al
210 Arthur
Missoula, Montana

8
Charles F. and Frank J. Odenwald
SE 1/4 Sec. 18
T. 20 N. R. 16 W.

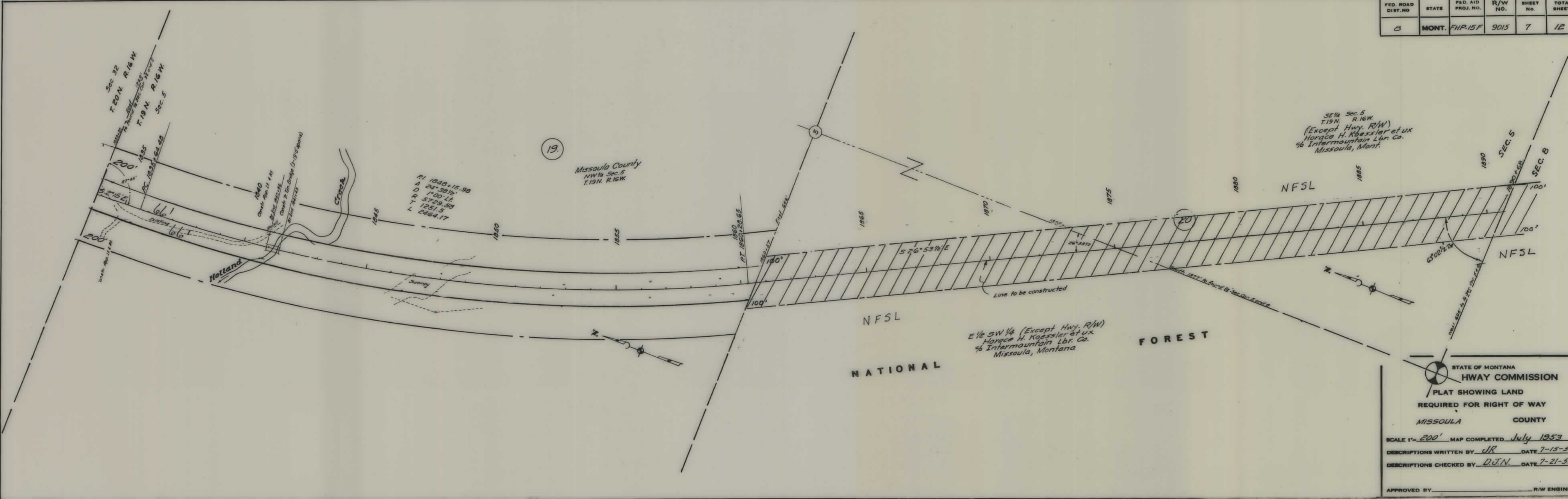


STATE OF MONTANA
STATE HIGHWAY COMMISSION
 PLAT SHOWING LAND
 REQUIRED FOR RIGHT OF WAY
 MISSOULA COUNTY

SCALE 1" = 200' MAP COMPLETED July 1953
 DESCRIPTIONS WRITTEN BY JR DATE 7-15-53
 DESCRIPTIONS CHECKED BY D.J.N. DATE 7-21-53

APPROVED BY _____ R/W ENGINEER

FED. ROAD DIST. NO.	STATE	FED. AID PROJ. NO.	R/W NO.	SHEET NO.	TOTAL SHEETS
3	MONT.	FHP-15F	9015	7	12

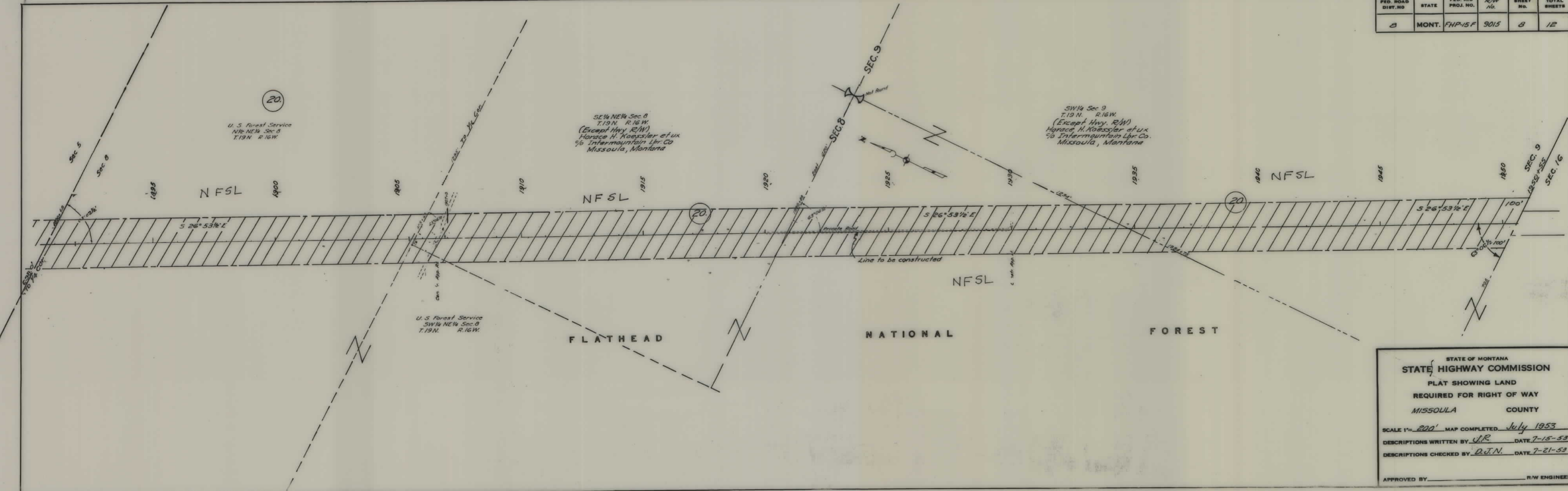


STATE OF MONTANA
HWAY COMMISSION
 PLAT SHOWING LAND
 REQUIRED FOR RIGHT OF WAY
 MISSOULA COUNTY

SCALE 1" = 200' MAP COMPLETED July 1953
 DESCRIPTIONS WRITTEN BY J.R. DATE 7-15-53
 DESCRIPTIONS CHECKED BY D.J.N. DATE 7-21-53

APPROVED BY _____ R/W ENGINEER

FED. ROAD DIST. NO.	STATE	FED. AID PROJ. NO.	R/W No.	SHEET NO.	TOTAL SHEETS
8	MONT.	FHP-15F	9015	8	12

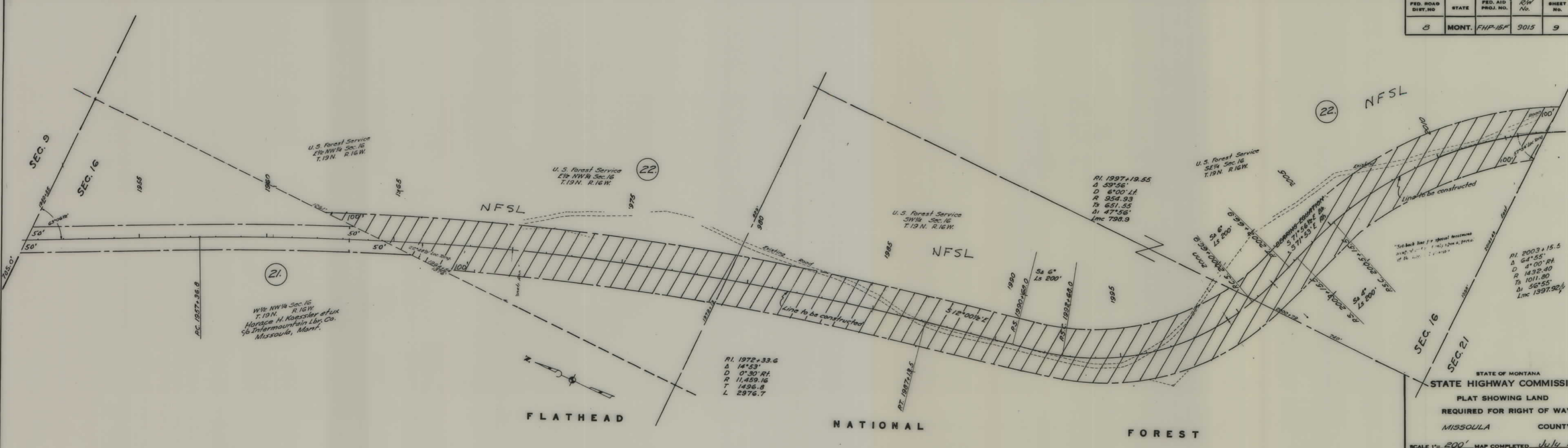


STATE OF MONTANA
STATE HIGHWAY COMMISSION
 PLAT SHOWING LAND
 REQUIRED FOR RIGHT OF WAY
 MISSOULA COUNTY

SCALE 1" = 200' MAP COMPLETED July 1953
 DESCRIPTIONS WRITTEN BY J.R. DATE 7-15-53
 DESCRIPTIONS CHECKED BY D.J.N. DATE 7-21-53

APPROVED BY _____ R/W ENGINEER

FED. ROAD DIST. NO.	STATE	FED. AID PROJ. NO.	R/W No.	SHEET NO.	TOTAL SHEETS
8	MONT.	FHP-15F	9015	9	12



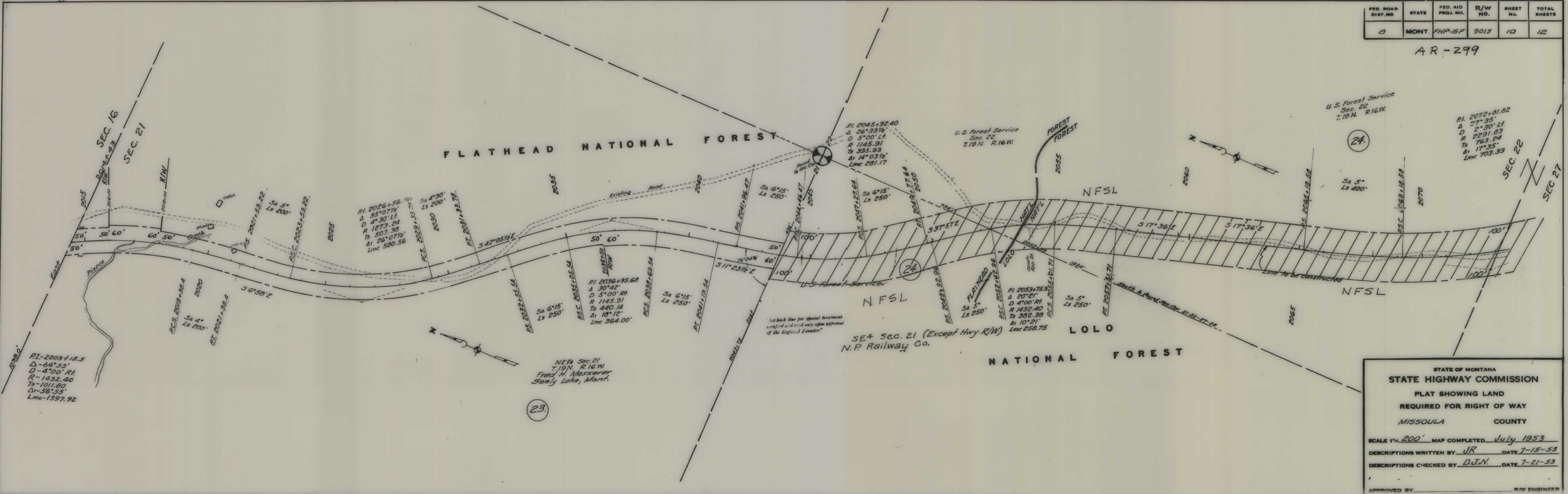
STATE OF MONTANA
STATE HIGHWAY COMMISSION
 PLAT SHOWING LAND
 REQUIRED FOR RIGHT OF WAY
 MISSOULA COUNTY

SCALE 1" = 200' MAP COMPLETED July 1953
 DESCRIPTIONS WRITTEN BY JR DATE 7-15-53
 DESCRIPTIONS CHECKED BY D.J.N. DATE 7-21-53

APPROVED BY _____ R/W ENGINEER

FED. ROAD DIST. NO.	STATE	FED. AID PROJ. NO.	R/W NO.	SHEET NO.	TOTAL SHEETS
3	MONT.	FHP-15F	9015	10	12

AR-299

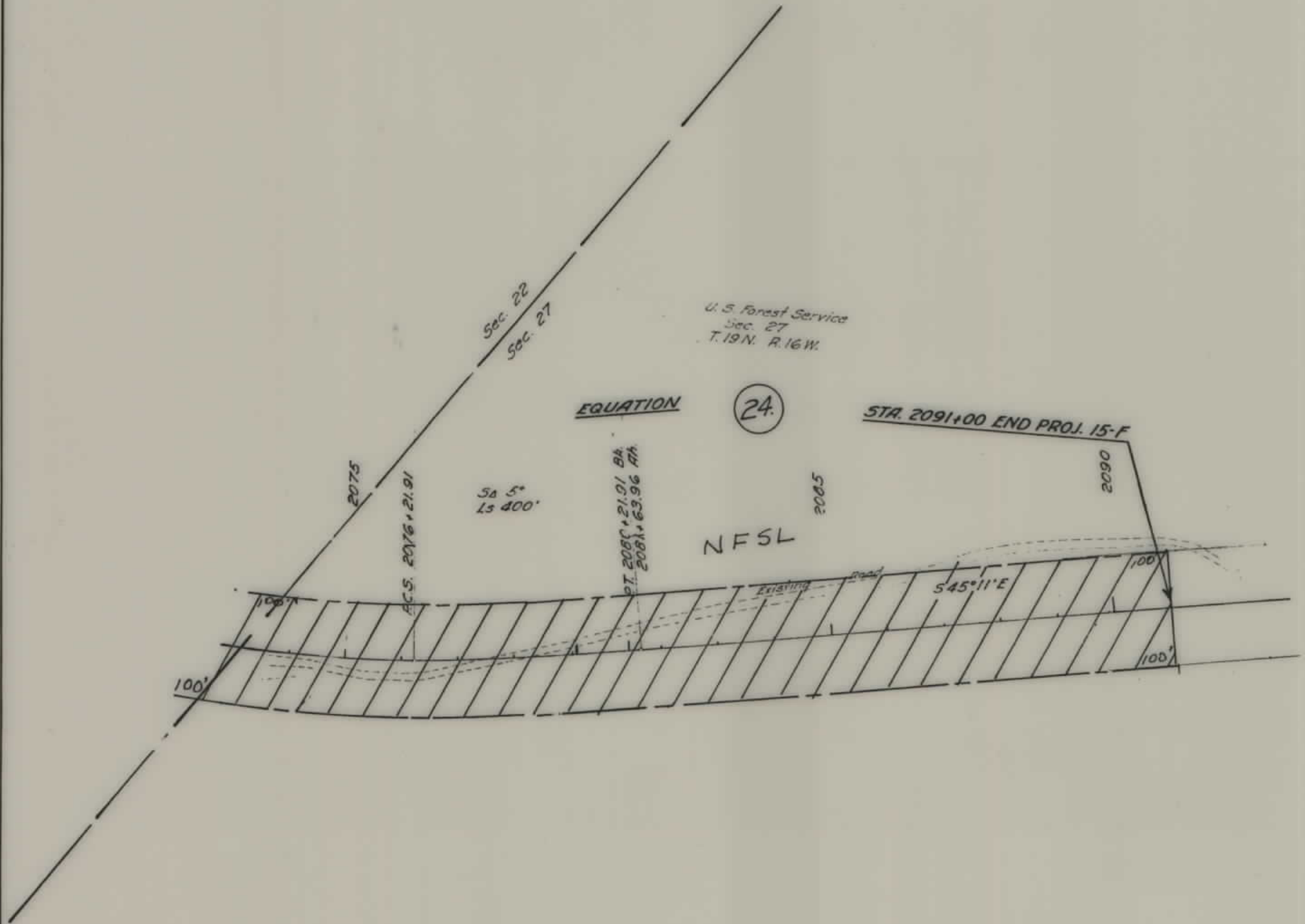


STATE OF MONTANA
STATE HIGHWAY COMMISSION
PLAT SHOWING LAND
REQUIRED FOR RIGHT OF WAY
MISSOULA COUNTY

SCALE 1"=200' MAP COMPLETED July 1953
 DESCRIPTIONS WRITTEN BY JR DATE 7-15-53
 DESCRIPTIONS CHECKED BY D.J.W. DATE 7-21-53

APPROVED BY _____ R/W ENGINEER

FED. ROAD DIST. NO.	STATE	FED. AID PROJ. NO.	R/W NO.	SHEET NO.	TOTAL SHEETS
8	MONT.	FHP-15F	9015	11	12



STATE OF MONTANA
STATE HIGHWAY COMMISSION
 PLAT SHOWING LAND
 REQUIRED FOR RIGHT OF WAY
 MISSOULA COUNTY

SCALE 1" = 200' MAP COMPLETED July 1953
 DESCRIPTIONS WRITTEN BY JR DATE 7-15-53
 DESCRIPTIONS CHECKED BY D.J.N. DATE 7-21-53

APPROVED BY _____ R.W. ENGINEER

