

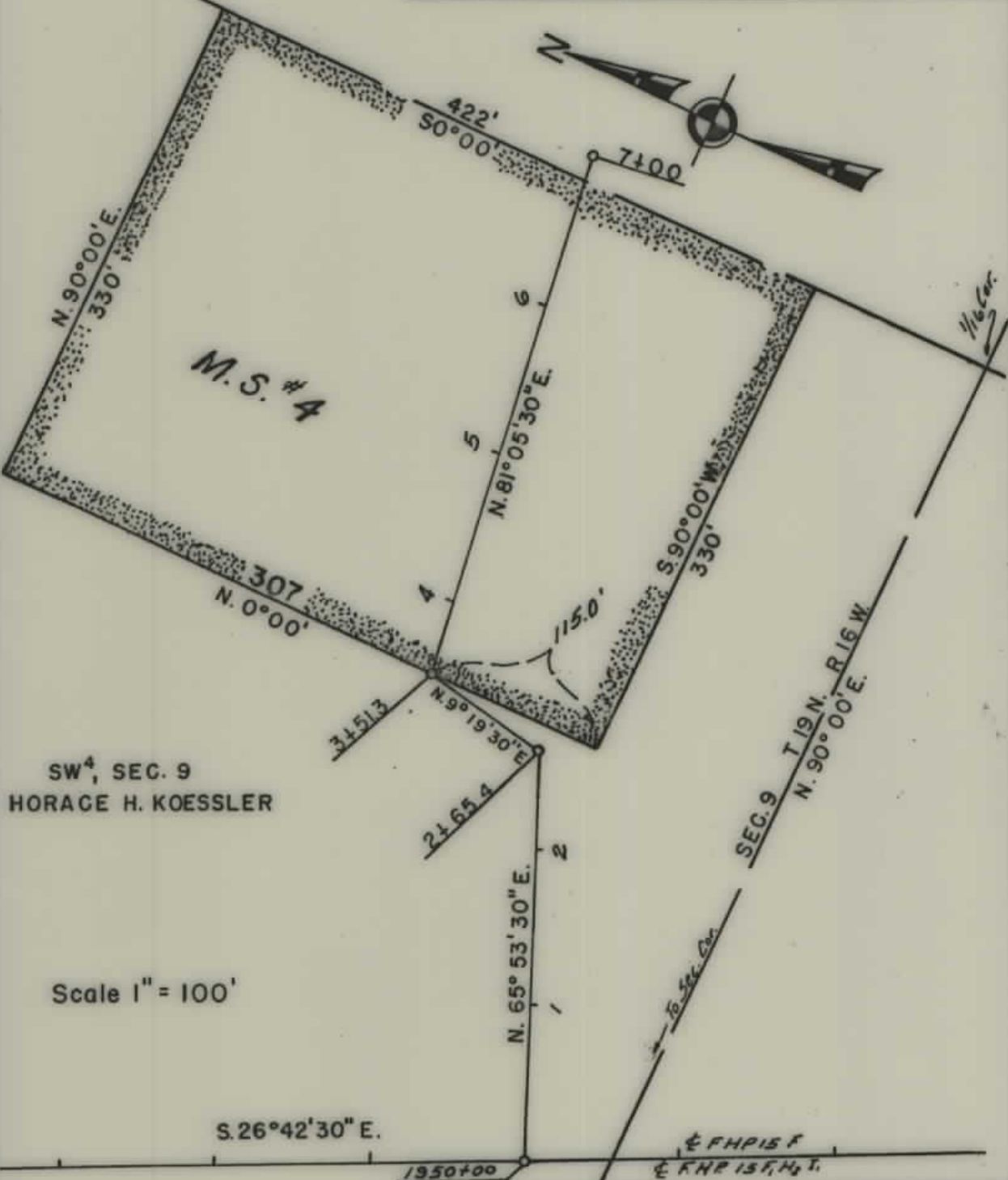
PLANS

NOT

TO

SCALE

FED. ROAD DIST. NO.	STATE	FED. AID PROJ. NO.	R/W NO.	SHEET NO.	TOTAL SHEETS
8	MONT.	F.H.P. 15, H2, I1	M.S.	1	1



STATE OF MONTANA
 STATE HIGHWAY COMMISSION
 LAND REQUIRED FOR MATERIAL SITES
 MISSOULA COUNTY
 SCALE 1" = 100' MAP APPROVED BY T.H.J. 2-20-52

