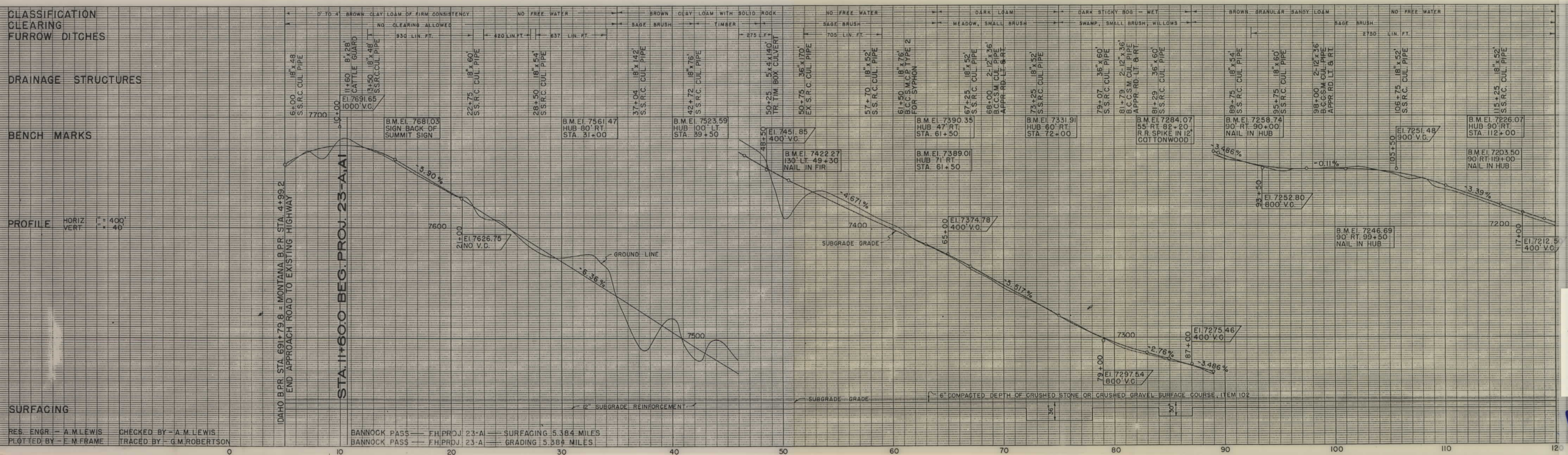
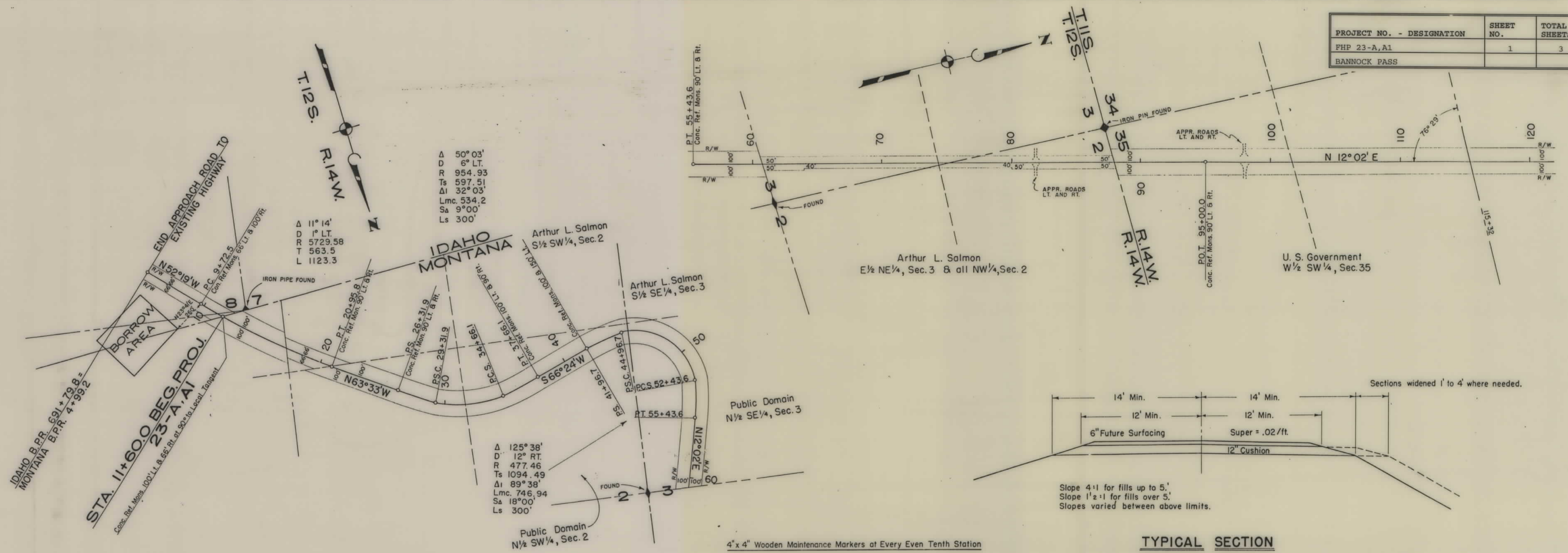


PLANS  
NOT  
TO  
SCALE

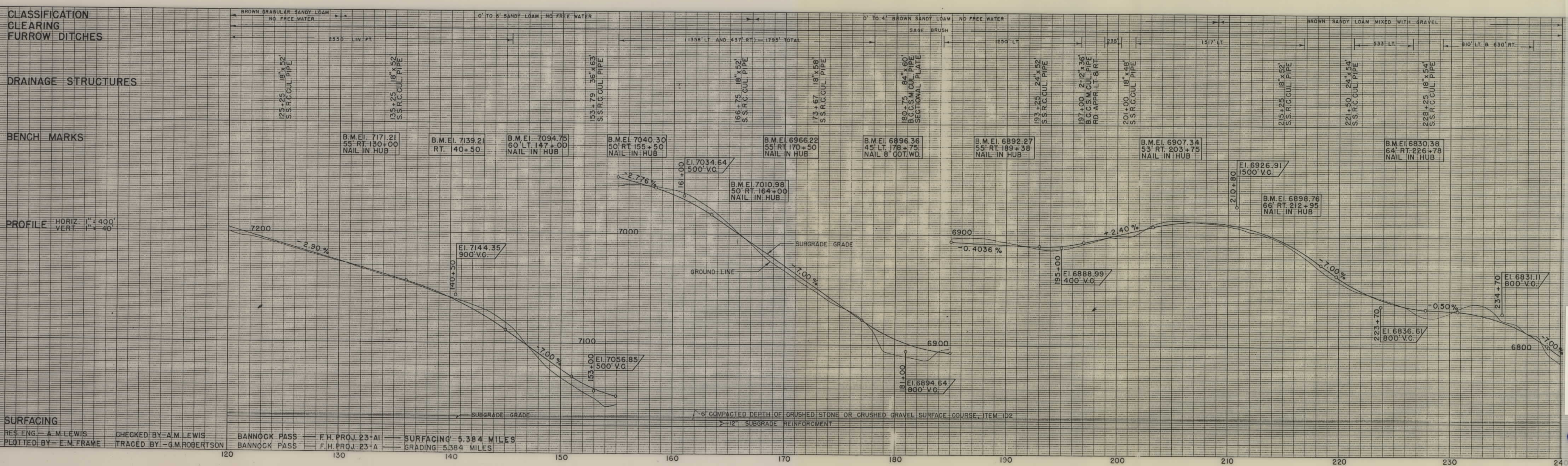
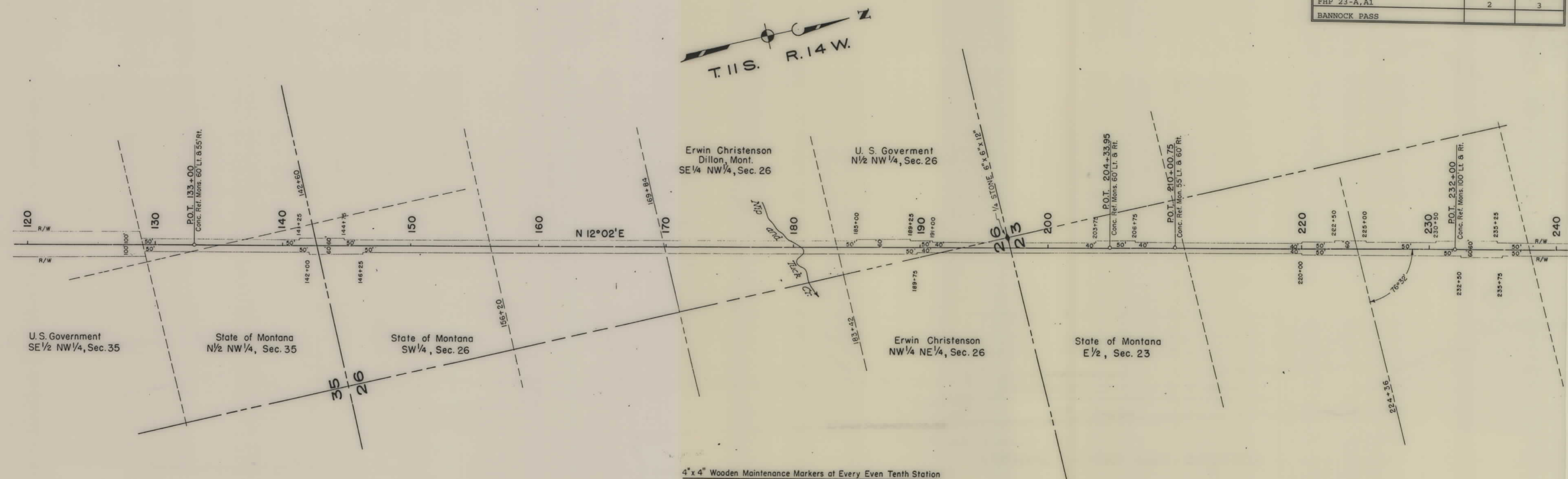


|                           |           |              |
|---------------------------|-----------|--------------|
| PROJECT NO. - DESIGNATION | SHEET NO. | TOTAL SHEETS |
| FHP 23-A, A1              | 1         | 3            |
| BANNOCK PASS              |           |              |





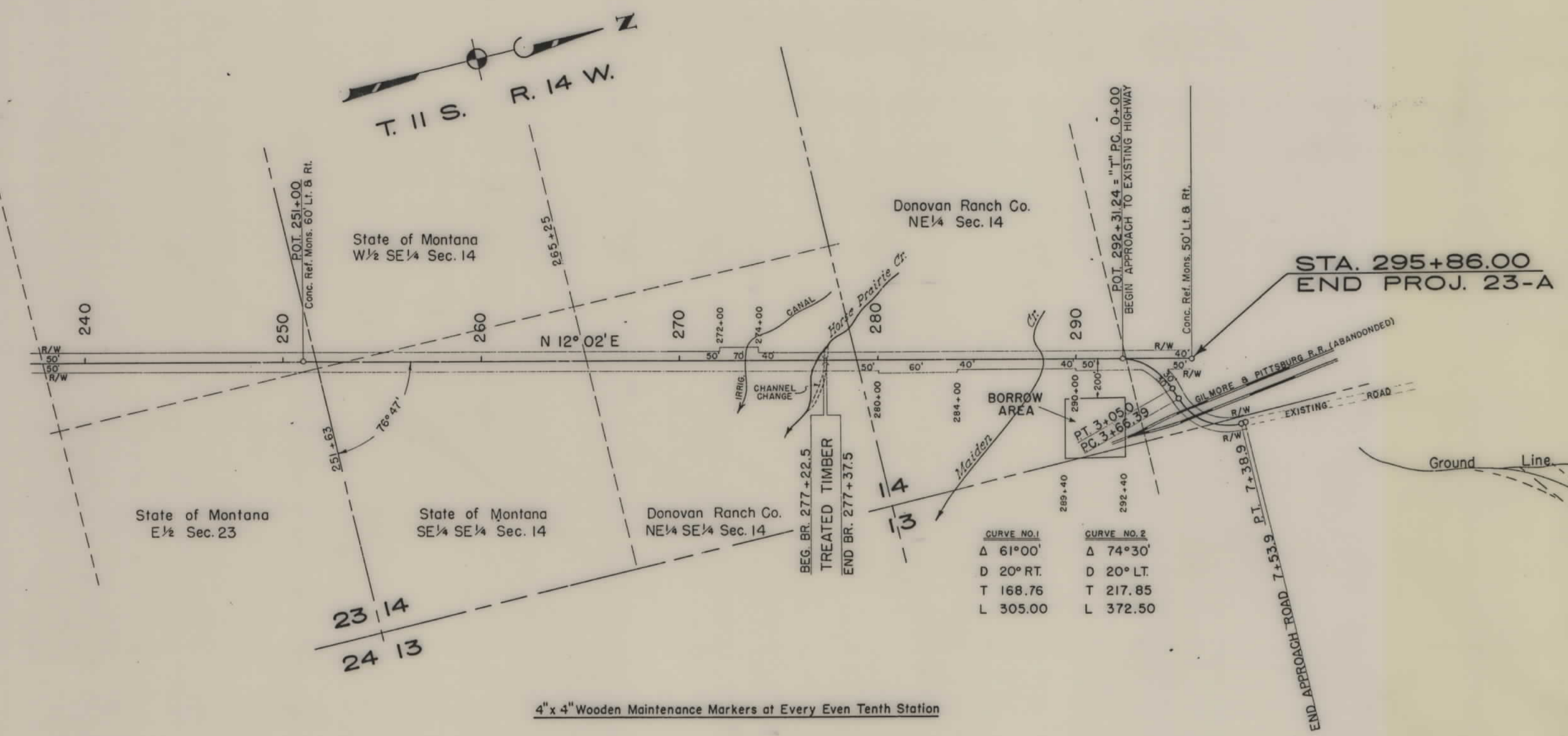
| PROJECT NO. - DESIGNATION | SHEET NO. | TOTAL SHEETS |
|---------------------------|-----------|--------------|
| FHP 23-A, A1              | 2         | 3            |
| BANNOCK PASS              |           |              |



FHP 23-A, A1 SH 2 OF 3

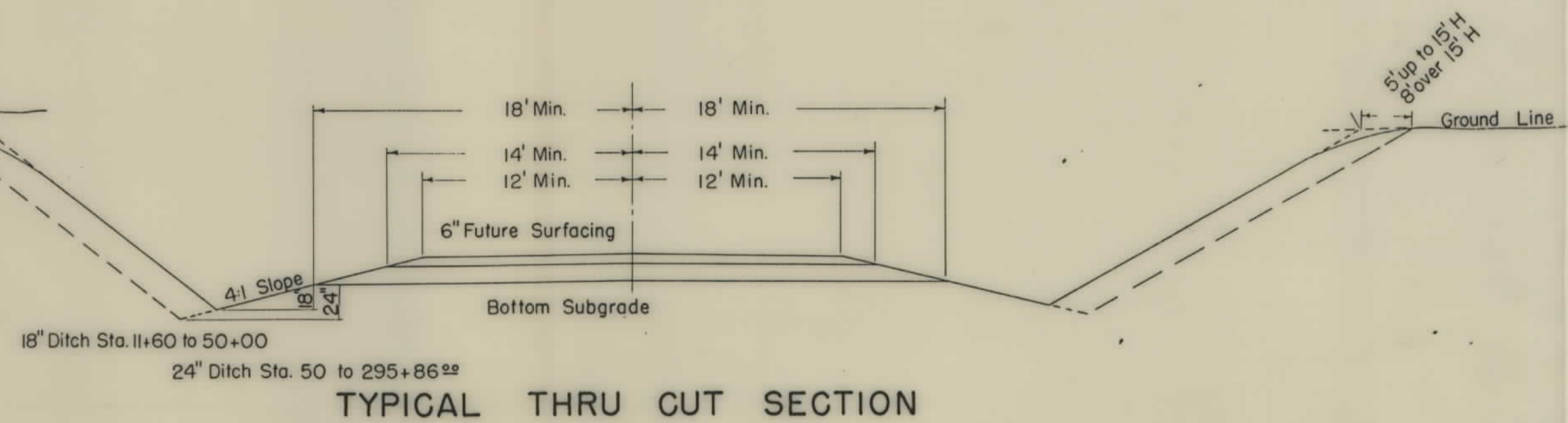


|                           |           |              |
|---------------------------|-----------|--------------|
| PROJECT NO. - DESIGNATION | SHEET NO. | TOTAL SHEETS |
| FHP 23-A, A1              | 3         | 3            |
| BANNOCK PASS              |           |              |



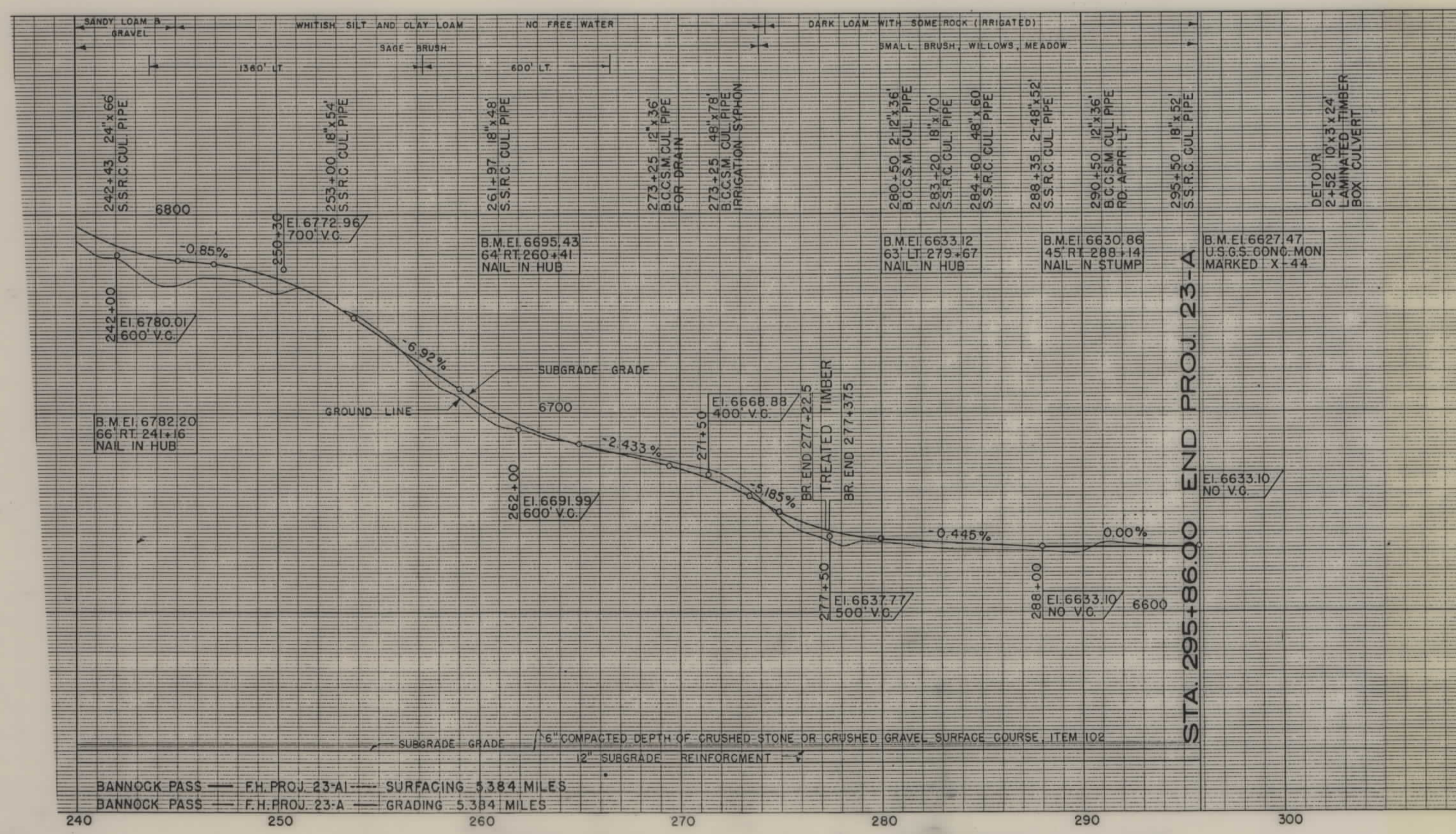
| H'       | Slope     |
|----------|-----------|
| 0 - 2.9  | 2 1/2 : 1 |
| 3 - 5.9  | 2 : 1     |
| 6 - 11.9 | 1 1/2 : 1 |
| 12 - 20  | 1 1/4 : 1 |
| Over 20  | 1 : 1     |

STA. 295+86.00  
END PROJ. 23-A



TYPICAL THRU CUT SECTION

4" x 4" Wooden Maintenance Markers at Every Even Tenth Station



CLASSIFICATION  
CLEARING  
FURROW DITCHES

DRAINAGE STRUCTURES

BENCH MARKS

PROFILE  
HORIZ. 1" = 40'  
VERT. 1" = 40'

SURFACING  
RES. ENGR. - A.M. LEWIS  
CHECKED BY - A.M. LEWIS  
PLOTTED BY - E.M. FRAME  
TRACED - G.M. ROBERTSON

STA. 295+86.00 END PROJ. 23-A

FHP 23-A, A1 SH1 3 OF 3