

PLANS

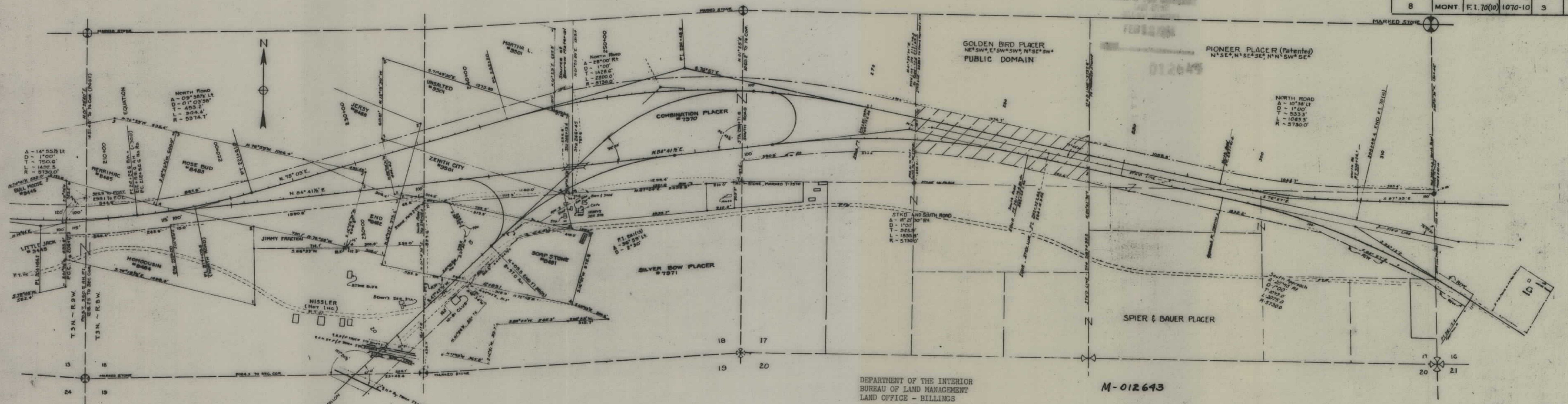
NOT

TO

SCALE



FED ROAD DIST NO	STATE	FED AID PROJ NO	R/W NO.	SHEET NO	TOTAL SHEETS
8	MONT.	F.I. 70(10)	1070-10	3	



DEPARTMENT OF THE INTERIOR  
BUREAU OF LAND MANAGEMENT  
LAND OFFICE - BILLINGS

M-012643

I hereby certify that the right of way represented hereon (hatched) in the NE<sup>1</sup>/<sub>4</sub>SW<sup>1</sup>/<sub>4</sub> Section 17, Township 3 North, Range 8 West affects only unpatented lands.

April 1, 1954

*Orval G. Hadley*  
ORVAL G. HADLEY, Manager

STATE OF MONTANA  
STATE HIGHWAY COMMISSION  
LAND REQUIRED FOR RIGHT OF WAY  
SILVER BOW COUNTY  
SCALE 1" = 400' MAP COMPLETED 1-20-54