

PLANS

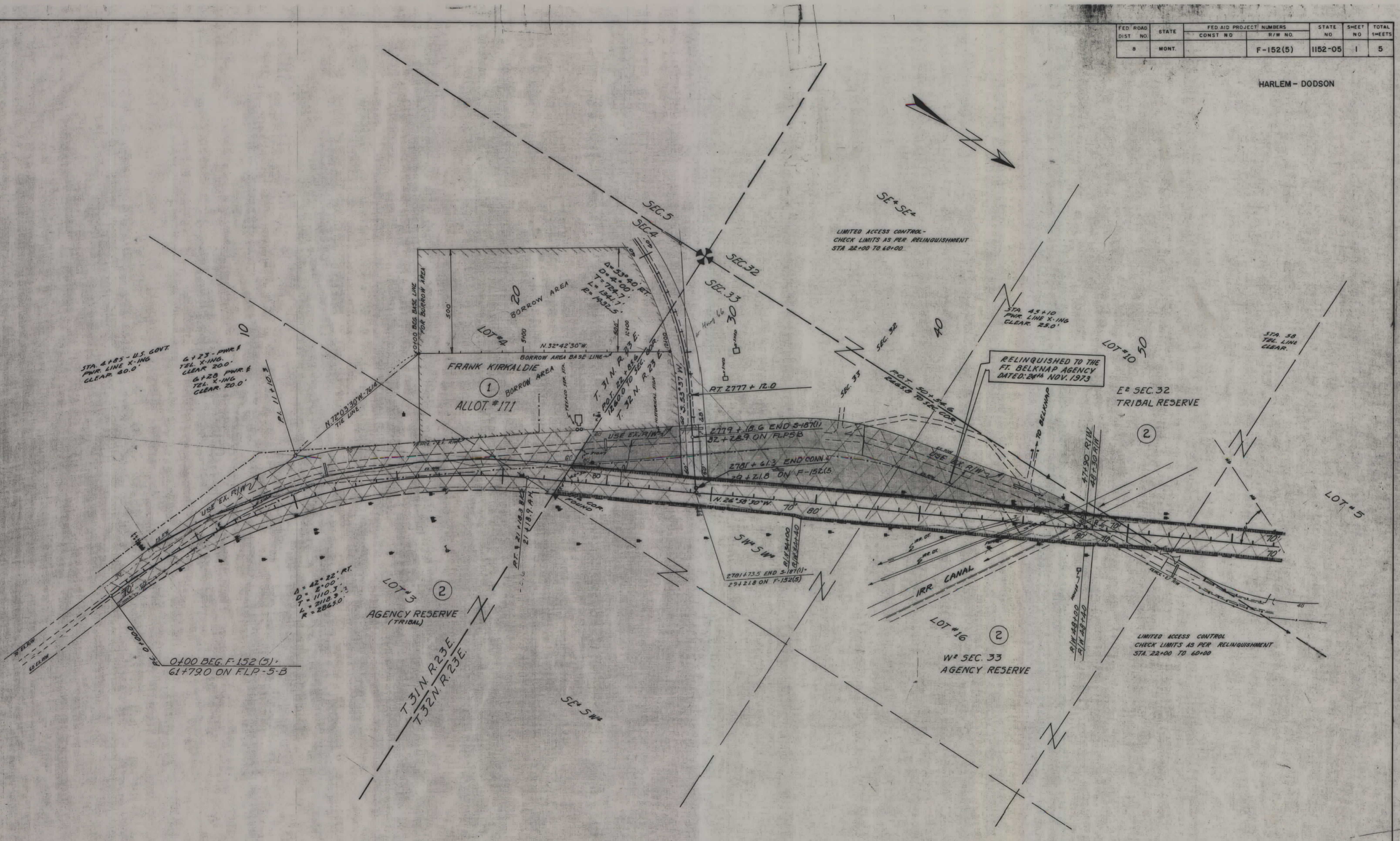
NOT

TO

SCALE

FED. ROAD DIST. NO.	STATE	FED. AID PROJECT NUMBERS		STATE NO.	SHEET NO.	TOTAL SHEETS
		CONST. NO.	R/W NO.			
8	MONT.		F-152(5)	1152-05	1	5

HARLEM - DODSON



LIMITED ACCESS CONTROL - CHECK LIMITS AS PER RELINQUISHMENT STA. 22+00 TO 60+00.

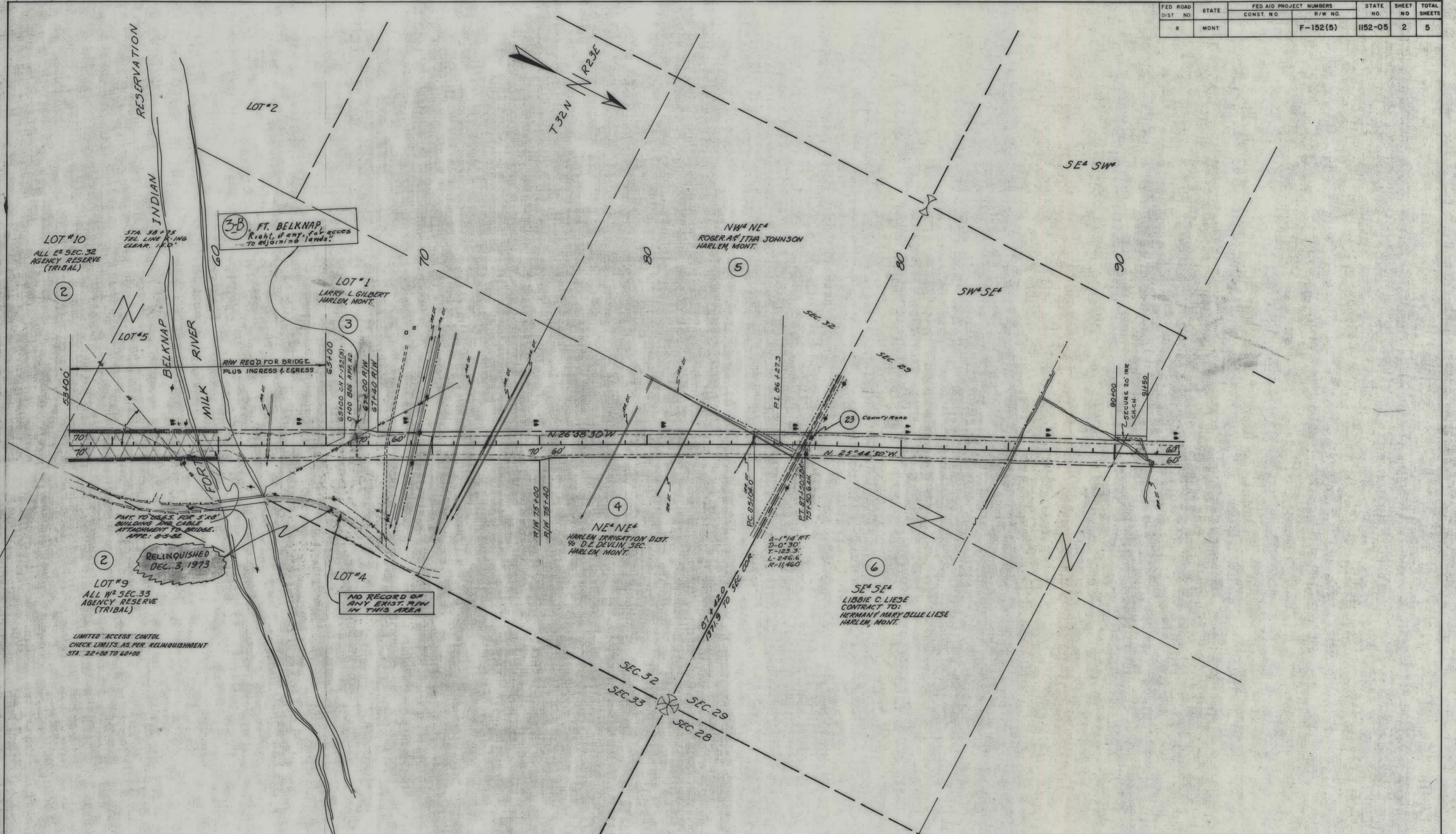
RELINQUISHED TO THE FT. BELKNAP AGENCY DATED: 24th NOV. 1973

LIMITED ACCESS CONTROL - CHECK LIMITS AS PER RELINQUISHMENT STA. 22+00 TO 60+00.

CONSTRUCTION LIMITS	
TOP OF CUT	-----
TOE OF FILL	-----
MAP TRANS. TO R/W	
MAP REVISED	
B.P.P. APPROVAL	<i>[Signature]</i>

STATE OF MONTANA
STATE HIGHWAY COMMISSION
 LAND REQUIRED FOR RIGHT OF WAY
 BI AIME COUNTY
 SCALE 1"=200' MAP COMPLETED

FED ROAD DIST NO	STATE	FED AID PROJECT NUMBERS		STATE NO.	SHEET NO	TOTAL SHEETS
		CONST NO.	R/W NO.			
8	MONT.		F-152(5)	1152-05	2	5



LOT #10
ALL E² SEC. 32
AGENCY RESERVE
(TRIBAL)

3B FT. BELKNAP
Right, if any, for access
to adjoining lands.

LOT #1
LARRY L. GILBERT
HARLEM, MONT.

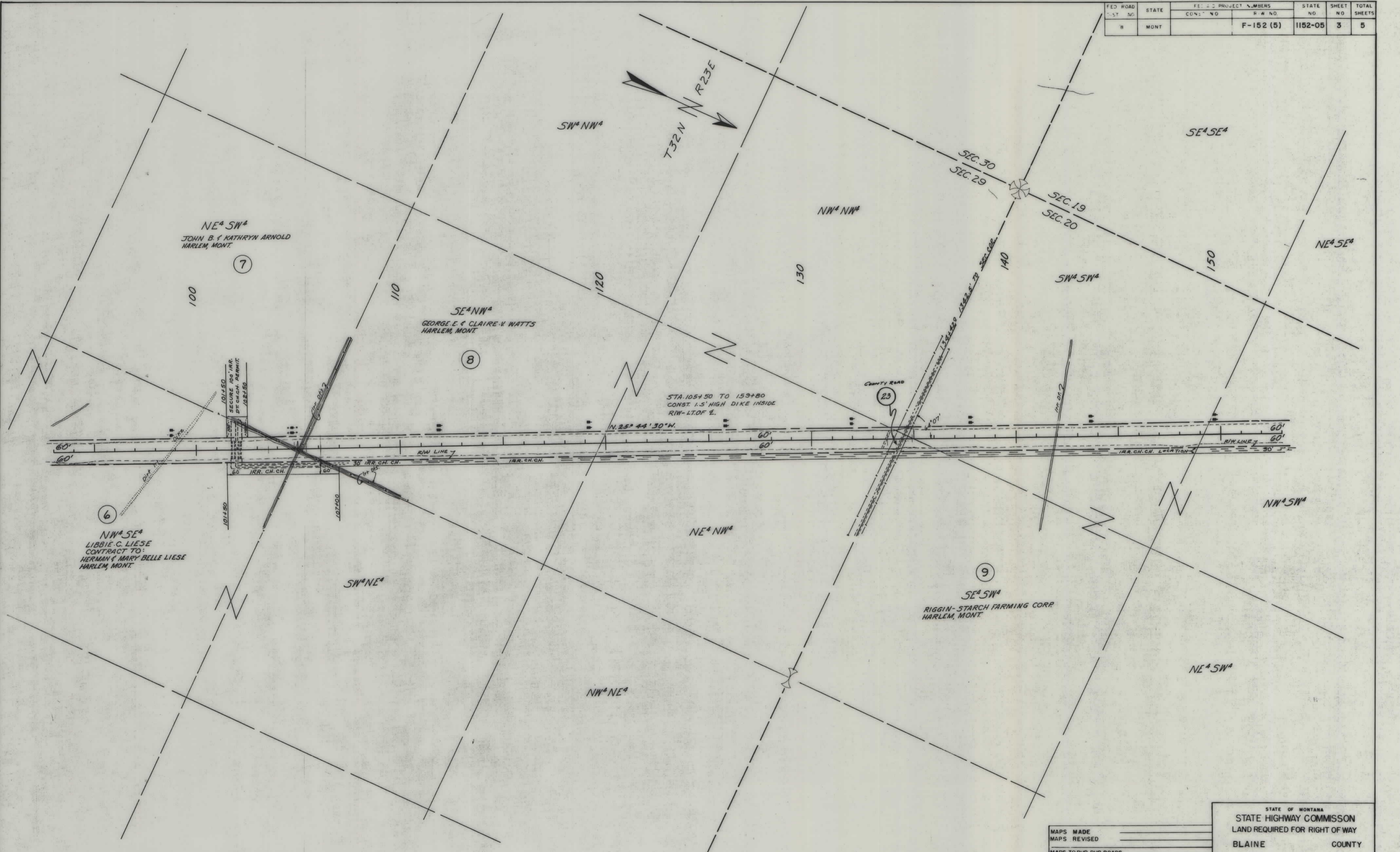
NW⁴ NE⁴
ROGER A. & ITHA JOHNSON
HARLEM, MONT.

NO RECORD OF
ANY EXIST. R/W
IN THIS AREA

SE⁴ SE⁴
LIBBIE C. LIESE
CONTRACT TO:
HERMAN & MARY BELLE LIESE
HARLEM, MONT.

CONSTRUCTION LIMITS		STATE OF MONTANA	
TOP OF CUT	-----	STATE HIGHWAY COMMISSION	
TOE OF FILL	-----	LAND REQUIRED FOR RIGHT OF WAY	
MAP TRANS. TO R/W	-----	BLAINE	COUNTY
MAP REVISED	-----	SCALE 1"=200' MAP COMPLETED	
B.P.R. APPROVAL	8/2/62-7/2/63-9/10/63		
	2-26-68, 8-13-68, 12-18-73		

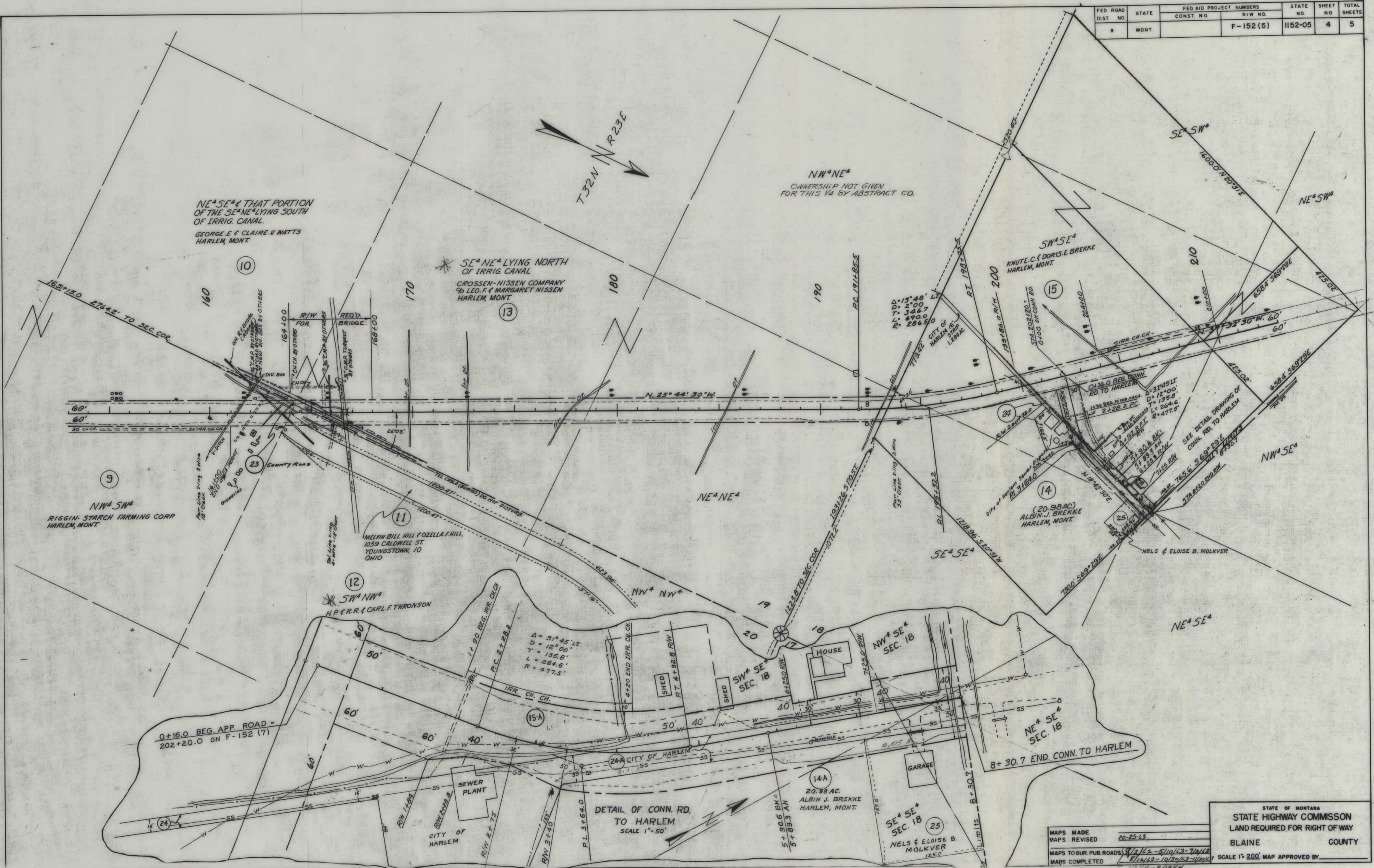
FED. ROAD DIST. NO.	STATE	FED. PROJECT NUMBERS		STATE NO.	SHEET NO.	TOTAL SHEETS
		CONTRACT NO.	R.W. NO.			
8	MONT.	F-152 (5)		1152-05	3	5



MAPS MADE _____
 MAPS REVISED _____
 MAPS TO BUR. PUB. ROADS _____
 MAPS COMPLETED 8/2/12-8/12/13

STATE OF MONTANA
 STATE HIGHWAY COMMISSION
 LAND REQUIRED FOR RIGHT OF WAY
 BLAINE COUNTY
 SCALE 1" = 200' MAP APPROVED BY _____

FED ROAD DIST NO.	STATE	FED AID PROJECT NUMBERS		STATE NO.	SHEET NO.	TOTAL SHEETS
		CONST. NO.	R/W NO.			
8	MONT.		F-152 (5)	1152-05	4	5



NE 1/4 SE 1/4 & THAT PORTION OF THE SE 1/4 NE 1/4 LYING SOUTH OF IRRIG. CANAL.
 GEORGE E. & CLAIRE V. MATTS
 HARLEM, MONT.

SE 1/4 NE 1/4 LYING NORTH OF IRRIG. CANAL
 CROSSEN-NISSEN COMPANY
 LEO. F. & MARGARET NISSEN
 HARLEM, MONT.

NW 1/4 NE 1/4
 OWNERSHIP NOT GIVEN FOR THIS 1/4 BY ABSTRACT CO.

SW 1/4 SE 1/4
 KNUTE C. & DORIS E. BREKKE
 HARLEM, MONT.

(20.98 AC)
 ALBIN J. BREKKE
 HARLEM, MONT.

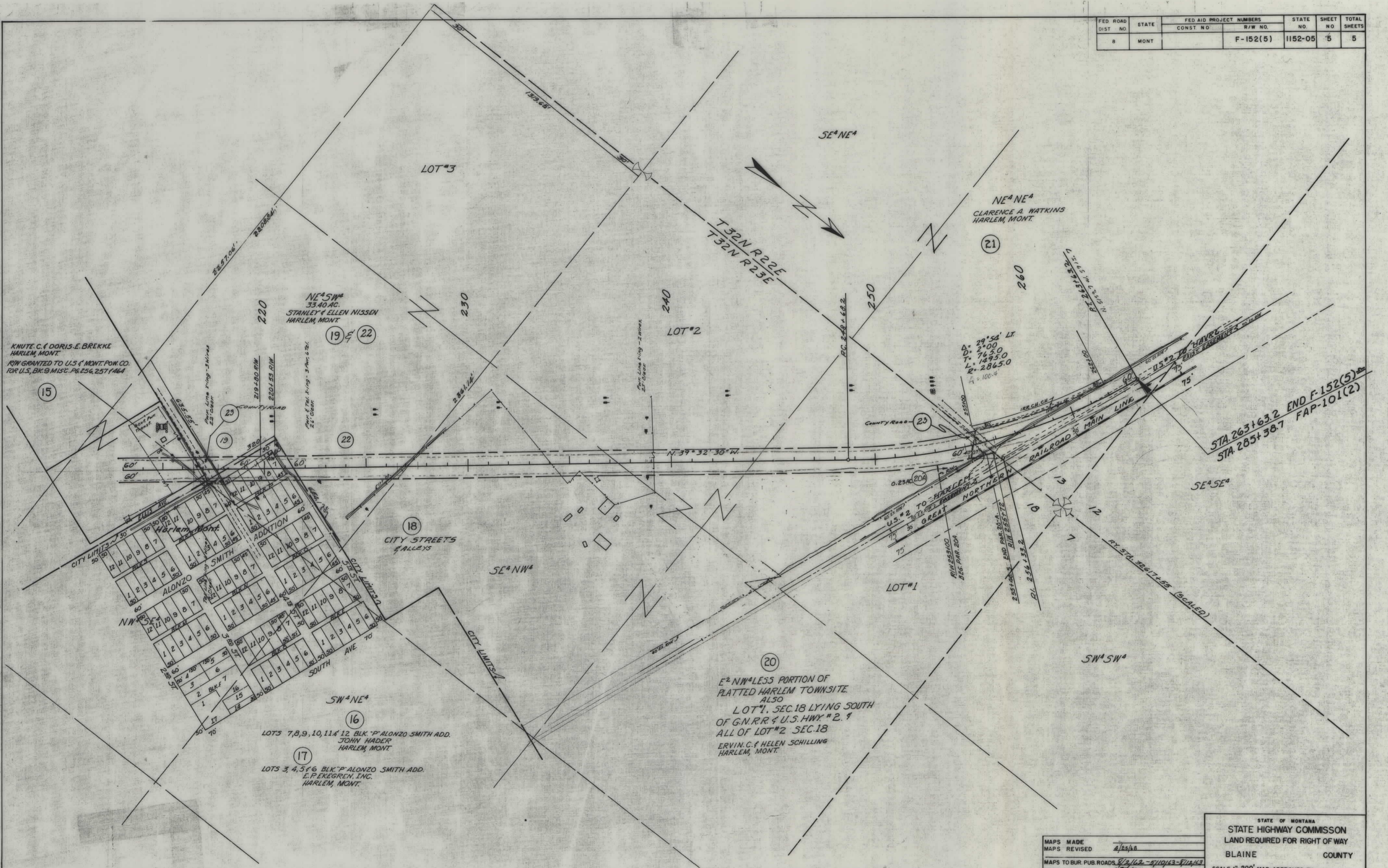
NELS & ELOISE B. MOLKVER

DETAIL OF CONN. RD. TO HARLEM
 SCALE 1" = 50'

MAPS MADE
 MAPS REVISED 10-25-63
 MAPS TO BUR. PUB. ROADS 8/2/62-5/10/63-7/1/63
 MAPS COMPLETED 8/12/63-10/30/63-11/20/63

STATE OF MONTANA
 STATE HIGHWAY COMMISSION
 LAND REQUIRED FOR RIGHT OF WAY
 BLAINE COUNTY
 SCALE 1" = 200'. MAP APPROVED BY _____

FED ROAD DIST NO	STATE	FED AID PROJECT NUMBERS		STATE NO	SHEET NO	TOTAL SHEETS
		CONST NO	R/W NO			
8	MONT		F-152(5)	1152-05	5	5



STA. 263+63.2 END F-152(5)
 STA. 285+38.7 FAP-101(2)

KNUTE C. & DORIS E. BREKKE
 HARLEM, MONT.
 R/W GRANTED TO U.S. & MONT. POW. CO.
 FOR U.S. BK. 9 MISC. PG. 256, 257, 1464

NE 1/4 SW 1/4
 33.40 AC.
 STANLEY & ELLEN NISSEN
 HARLEM, MONT.

NE 1/4 NE 1/4
 CLARENCE A. WATKINS
 HARLEM, MONT.

E 1/2 NW 1/4 LESS PORTION OF
 PLATTED HARLEM TOWNSITE
 ALSO
 LOT 1, SEC. 18 LYING SOUTH
 OF G.N.R.R. & U.S. HWY # 2. &
 ALL OF LOT #2 SEC. 18
 ERVIN C. & HELEN SCHILLING
 HARLEM, MONT.

LOTS 7, 8, 9, 10, 11 & 12 BLK. "P" ALONZO SMITH ADD.
 JOHN HADER
 HARLEM, MONT.

LOTS 3, 4, 5 & 6 BLK. "P" ALONZO SMITH ADD.
 E. P. EKEGREN, INC.
 HARLEM, MONT.

MAPS MADE	
MAPS REVISED	8/25/48
MAPS TO BUR. PUB. ROADS	8/2/42 - 8/10/43 - 8/14/43
MAPS COMPLETED	8-24-48

STATE OF MONTANA
 STATE HIGHWAY COMMISSION
 LAND REQUIRED FOR RIGHT OF WAY
 BLAINE COUNTY
 SCALE 1" = 200' MAP APPROVED BY