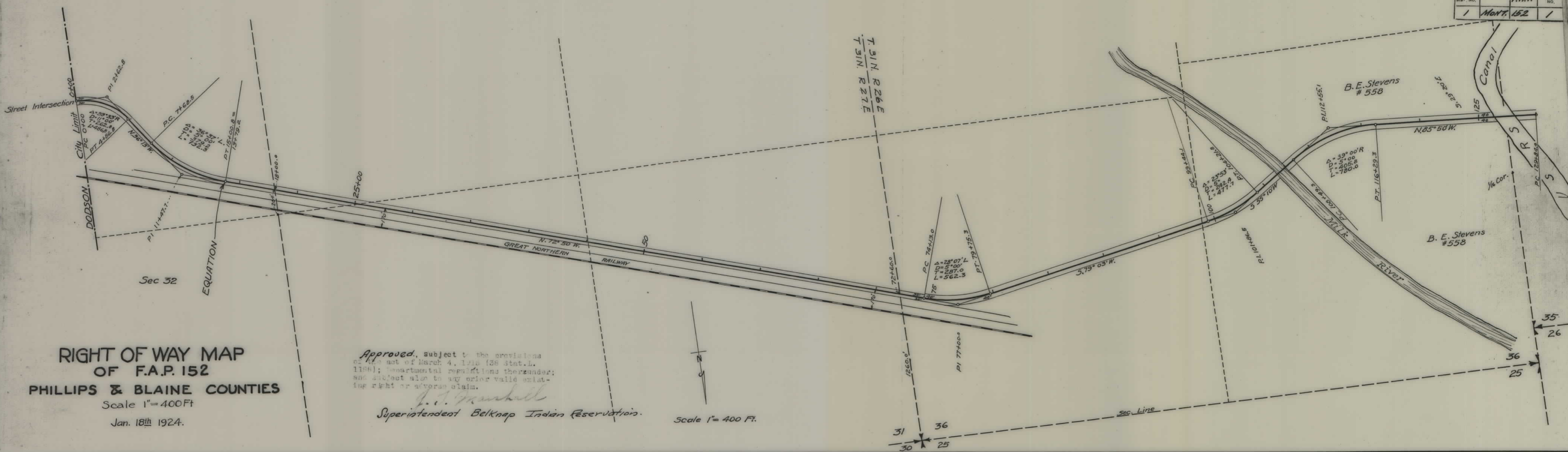


PLANS
NOT
TO
SCALE

FED. ROAD DIST. NO.	STATE	F.A.P. NO.	SHEET NO.
1	MONT.	152	1

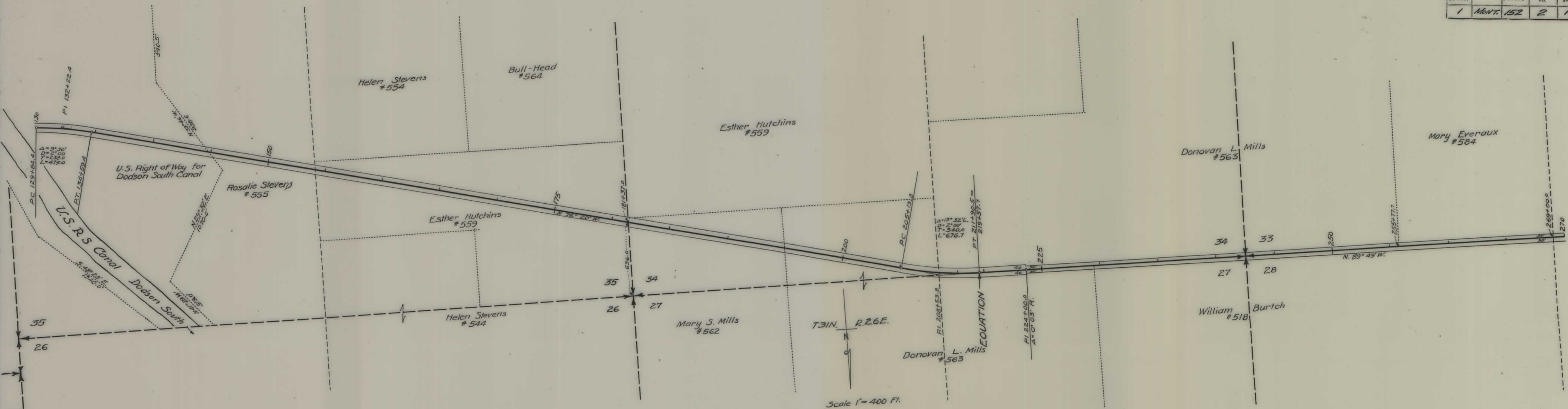


RIGHT OF WAY MAP
OF F.A.P. 152
PHILLIPS & BLAINE COUNTIES
 Scale 1"=400Ft
 Jan. 18th 1924.

Approved, subject to the provisions of the act of March 4, 1918 (38 Stat. L. 1186); departmental regulations thereunder; and subject also to any other valid existing right or adverse claim.
J. J. Marshall
 Superintendent Belknap Indian Reservation.

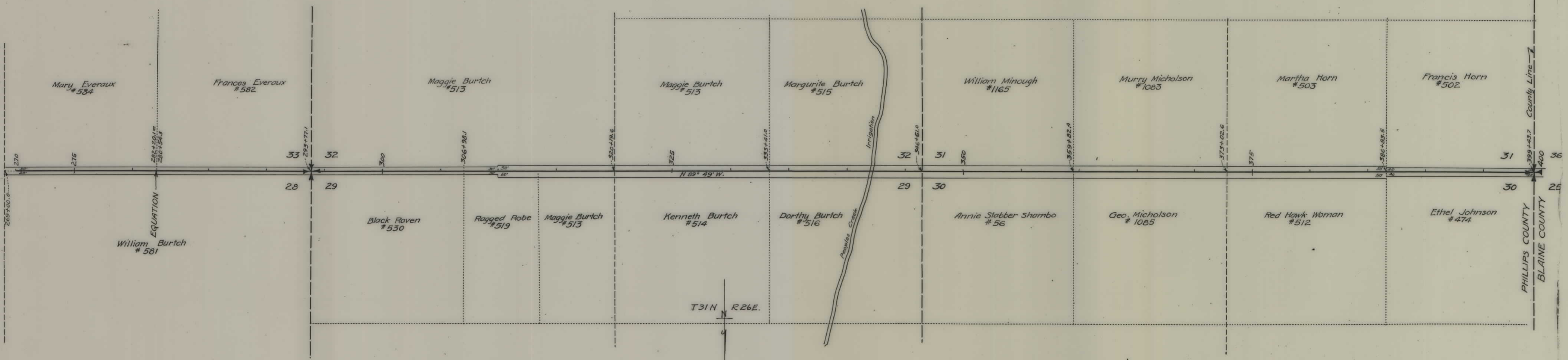


FED. ROAD DIST. NO.	STATE	F.A.P.	SHEET NO.	TOTAL SHEETS
1	MONT.	152	2	11



FAP 152

TO - L	SHEET NO.	F.A.P.	STATE	TO - L
11	3	152	MONT.	1



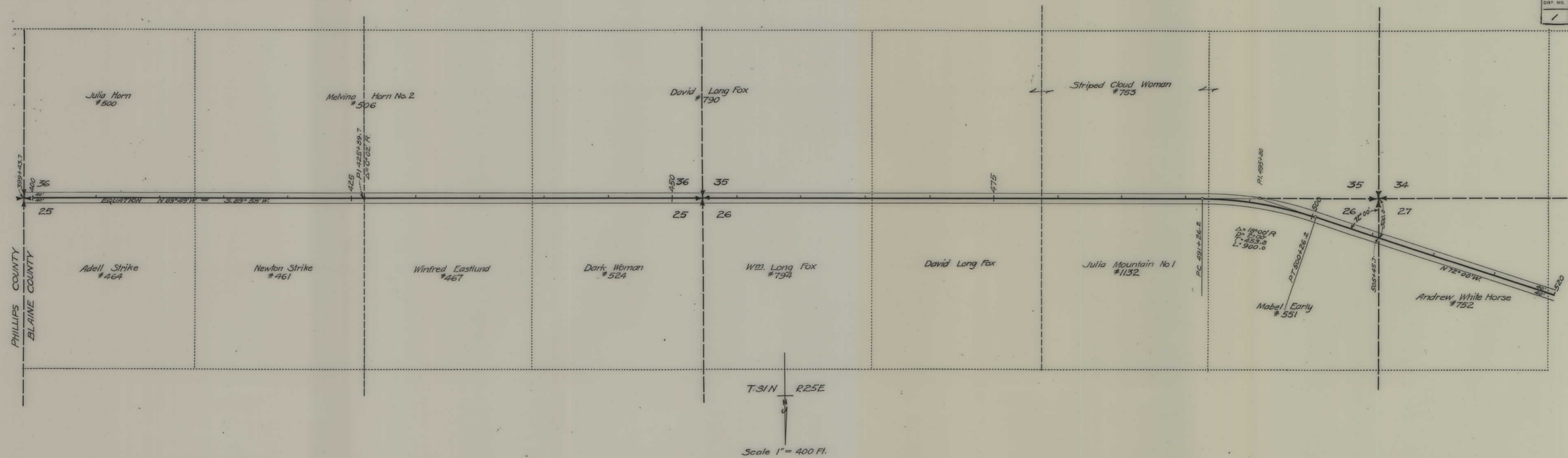
T31N R26E.

Scale 1" = 400 Ft.

FAP 152

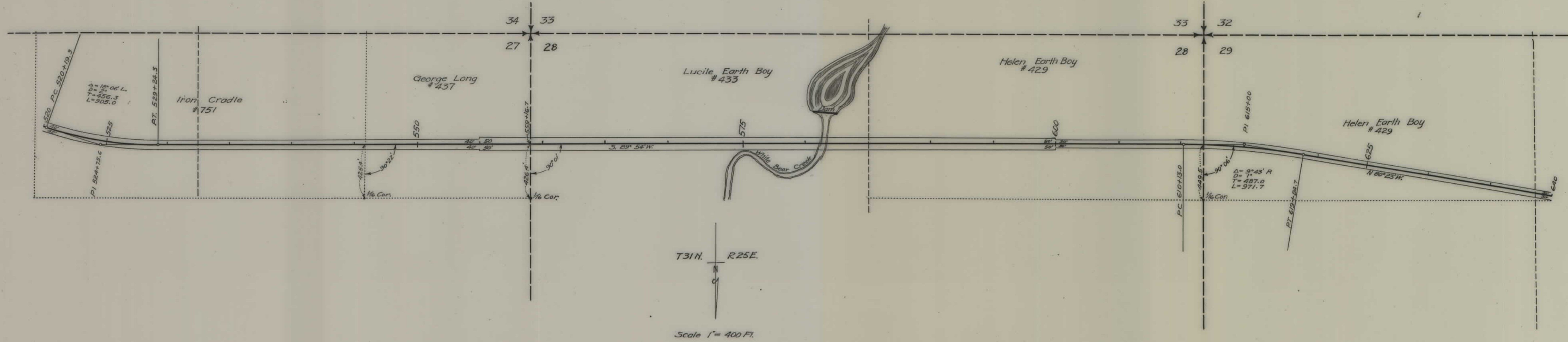
FAP 152 SH 3 OF 11

FED. ROAD DIST. NO.	STATE	F.A.P. NO.	SHEET NO.	TOTAL SHEETS
1	MONT.	152	4	11

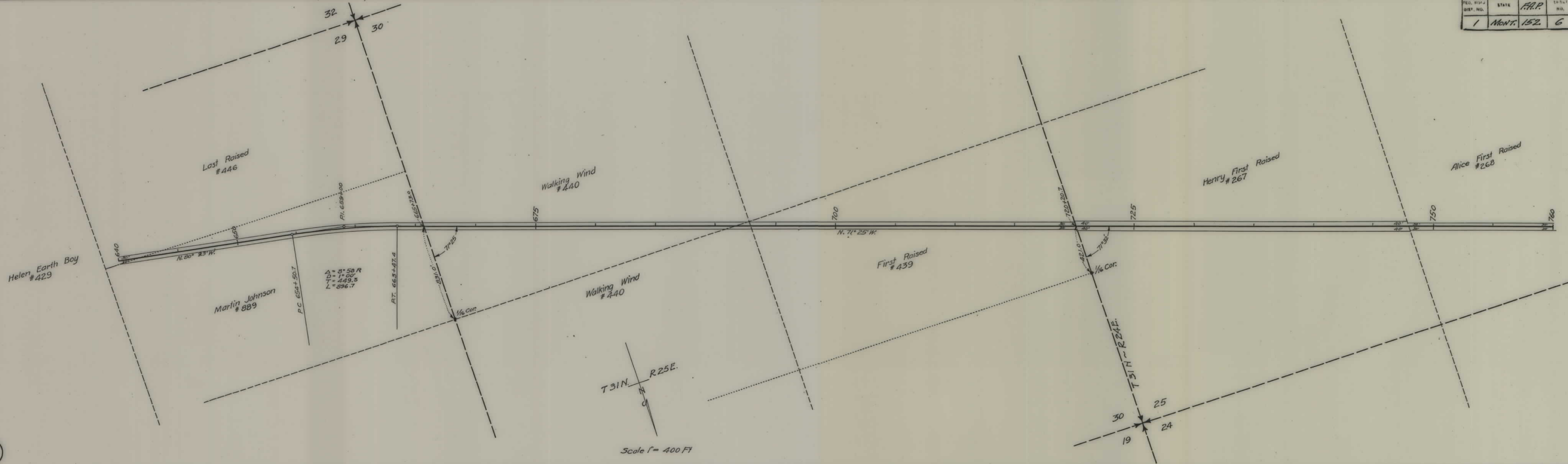


FAP 152

P.C. NO. 1	STATE	F.A.P.	SHEET NO.	TOTAL SHEETS
1	MONT.	152	5	11

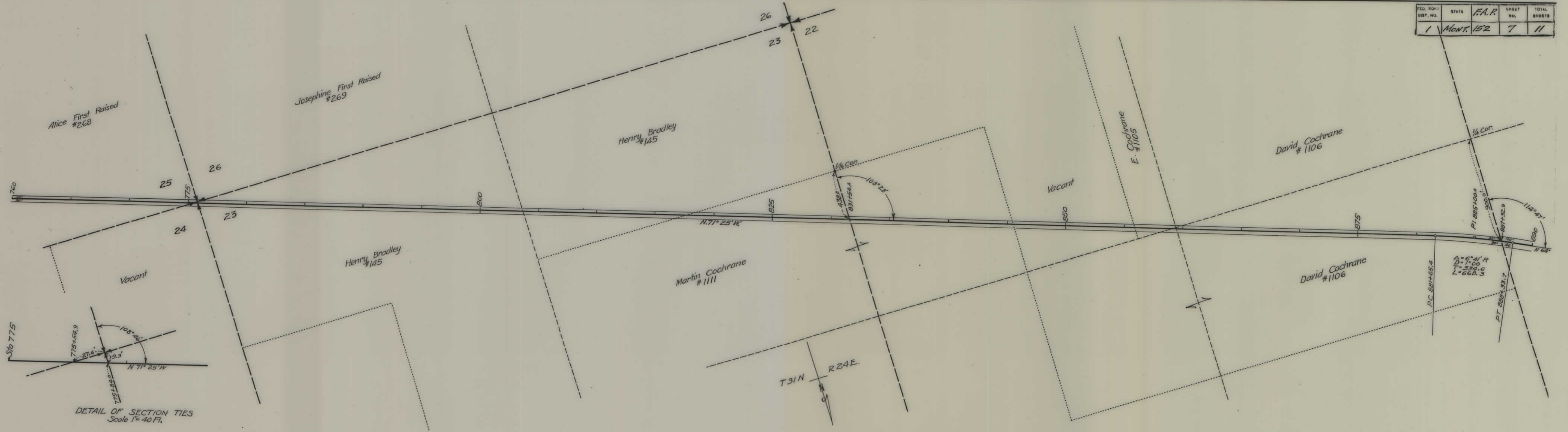


PED. DIST. NO.	STATE	F.A.P. NO.	SHEET NO.	TOTAL SHEETS
1	MONT.	152	6	11



FAP 152

FED. ROAD DIST. NO.	STATE	F.A.P.	SHEET NO.	TOTAL SHEETS
1	MONT.	152	7	11



DETAIL OF SECTION TIES
Scale 1" = 40 Ft.

Scale 1" = 400 Ft.

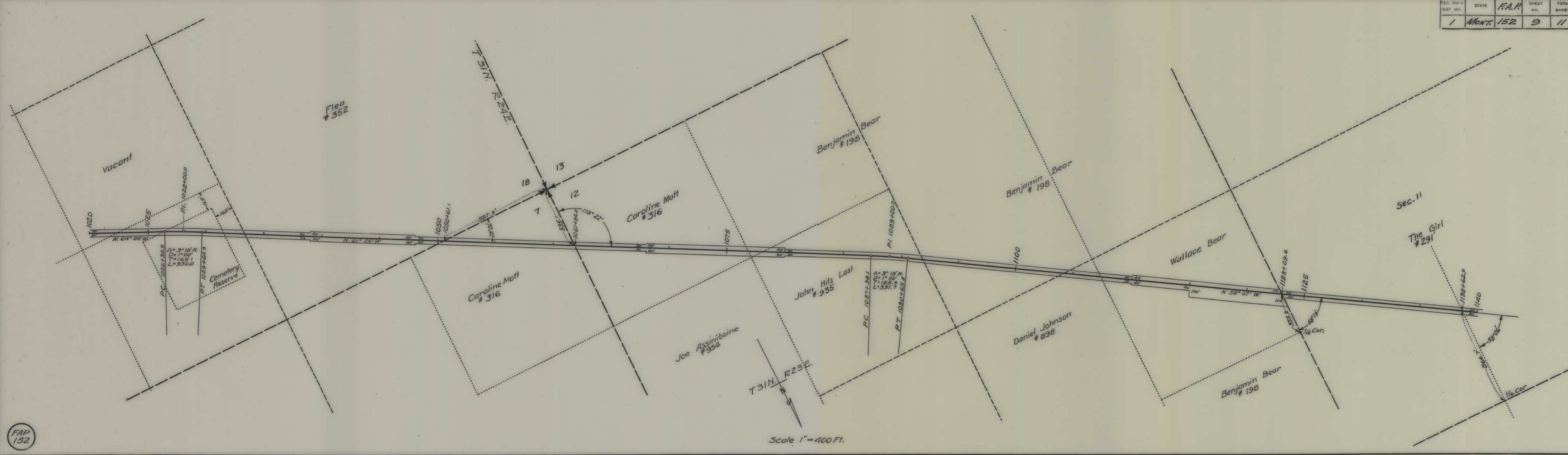
FAP 152

FED. DIST. NO.	STATE	F.A.P.	SHEET NO.	TOTAL SHEETS
1	Mont.	152	8	11



FAP 152

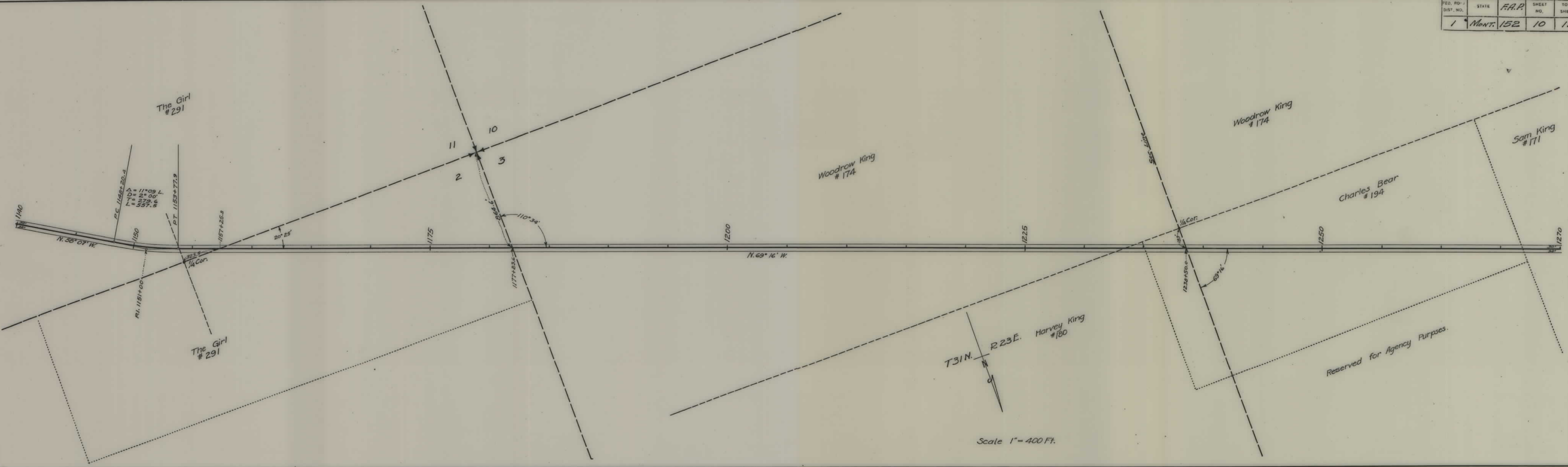
FED. ROAD DIST. NO.	STATE	F.A.P.	SHEET NO.	TOTAL SHEETS
1	MONT.	152	9	11



FAP 152

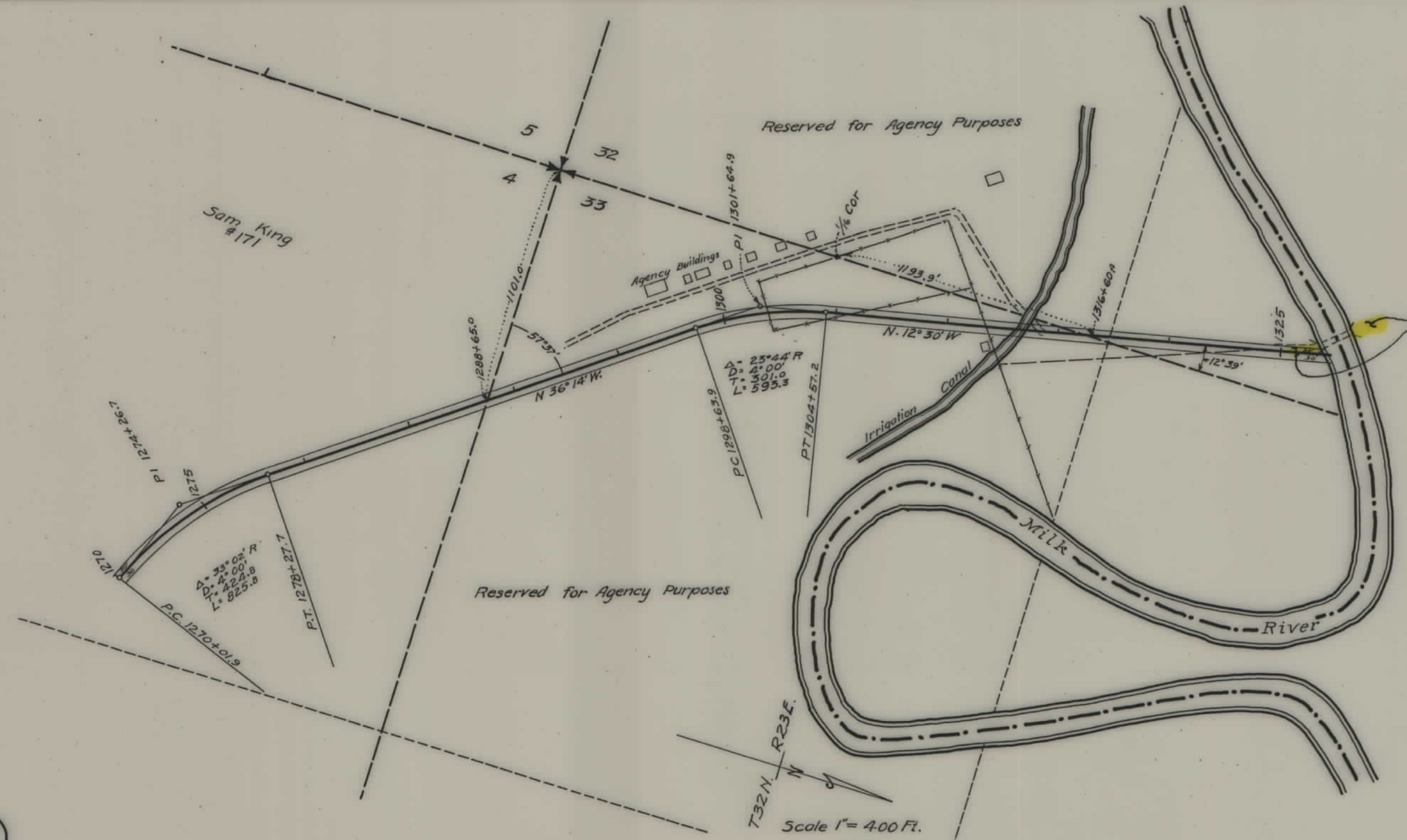
FAP 152 SHT 9 OF 11

FED. ROAD DIST. NO.	STATE	F.A.P.	SHEET NO.	TOTAL SHEETS
1	Mont.	152	10	11



FAP 152

DIST. NO.	STATE	F.A.P.	SHEET NO.	TOTAL SHEETS
1	MONT.	152	11	11



THE AREA 250' SO. & 0.1 MILE N. OF THE OLD MILK RIVER BRIDGE HAS BEEN RELINQUISHED DECEMBER 3, 1973

FAP 152

Scale 1" = 400 Ft.