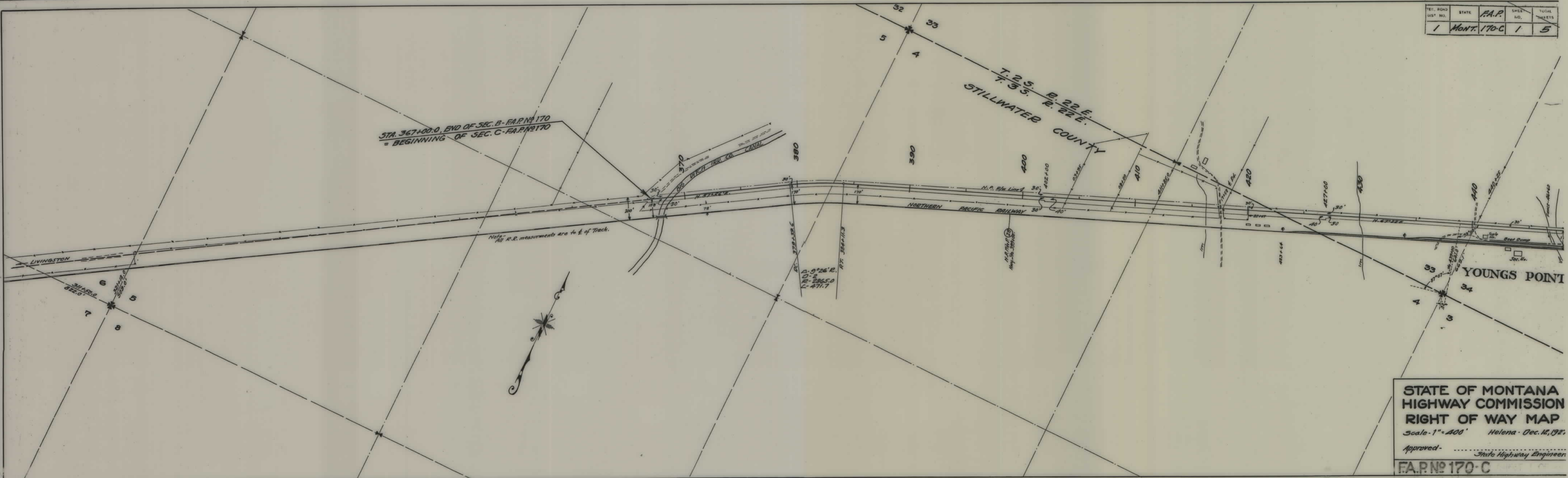


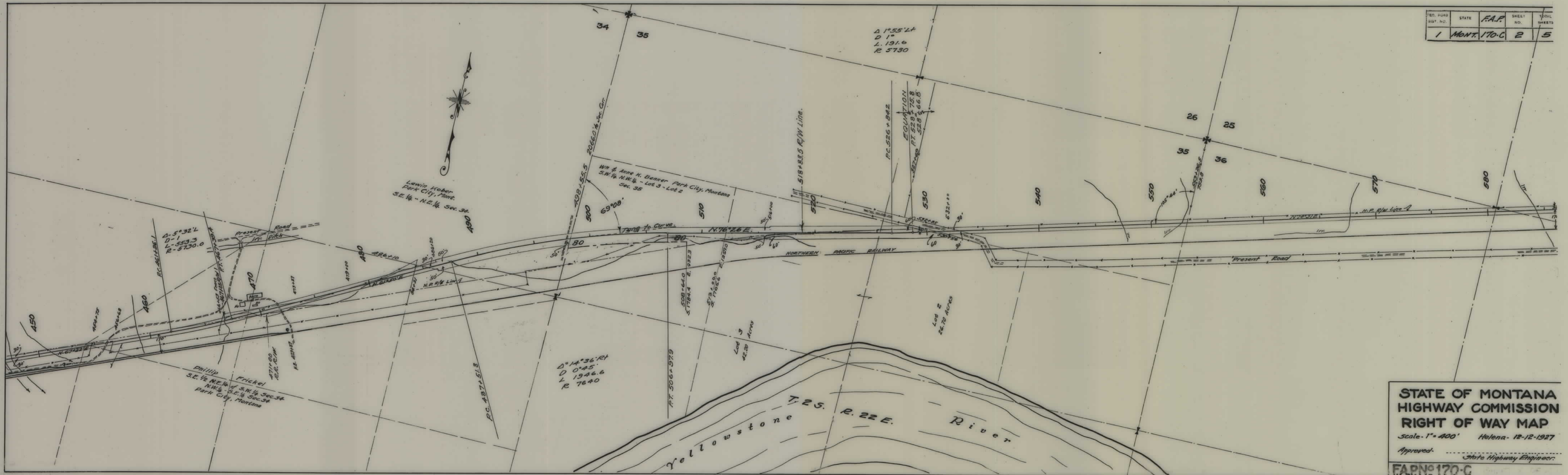
PLANS
NOT
TO
SCALE

SEC. ROAD DIST. NO.	STATE	F.A.P.	SHEET NO.	TOTAL SHEETS
1	MONT.	170-C	1	5



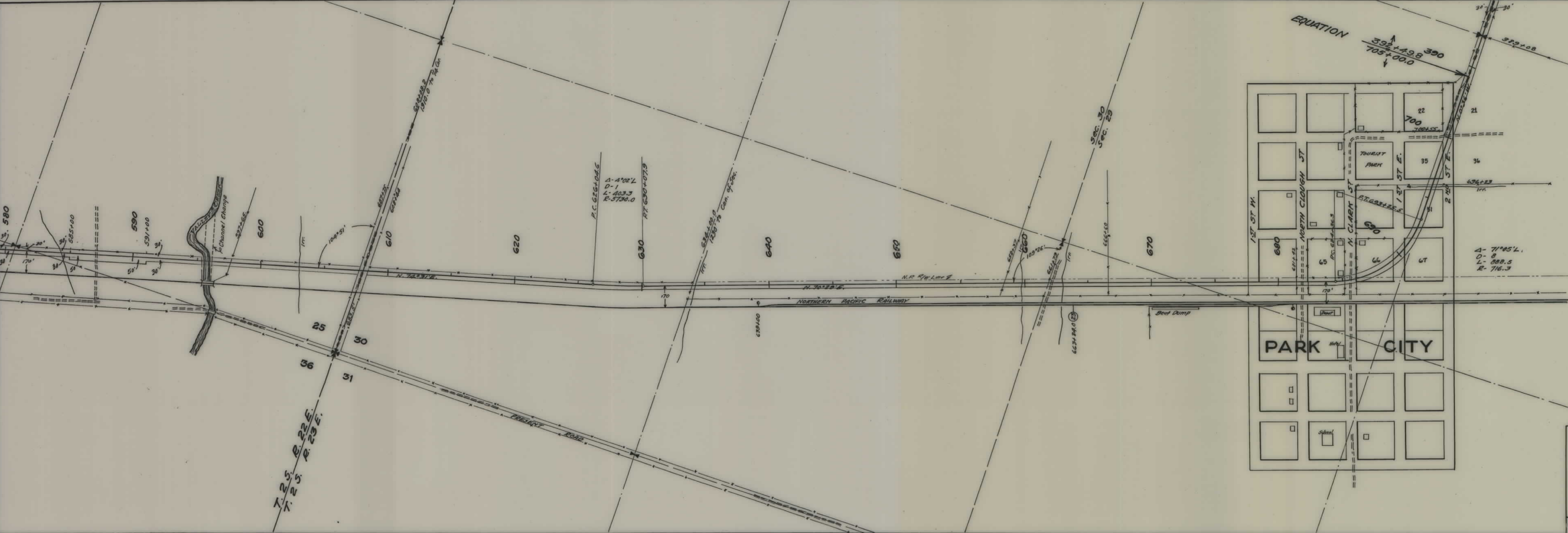
STATE OF MONTANA
HIGHWAY COMMISSION
RIGHT OF WAY MAP
 Scale - 1" = 400' Helena - Dec. 12, 1921
 Approved - _____
 State Highway Engineer
F.A.P. NO. 170-C

FED. ROAD DIST. NO.	STATE	F.A.P.	SHEET NO.	TOTAL SHEETS
1	MONT.	170-C	2	5



**STATE OF MONTANA
HIGHWAY COMMISSION
RIGHT OF WAY MAP**
Scale - 1" = 400' Helena - 12-12-1927
Approved: _____
State Highway Engineer.
FAP No 170-C

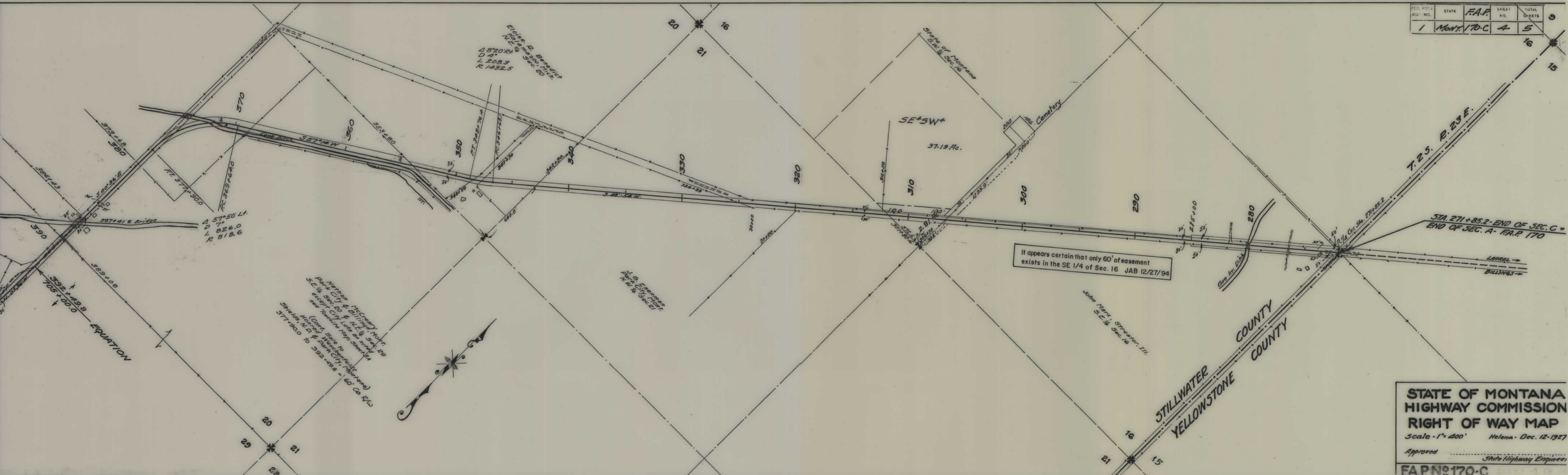
F.S. PLAN DIST. NO.	STATE	F.A.P. NO.	SHEET NO.	TOTAL SHEETS
1	Mont.	170-C	3	5



"NOTE"
For Park City Property Owners
See Street 3A

**STATE OF MONTANA
HIGHWAY COMMISSION
RIGHT OF WAY MAP**
Scale-1"=400' Helena-12-12-1927
Approved _____
State Highway Engineer
F.A.P. NO 170-C

FED. ROAD DIST. NO.	STATE	F.A.P. NO.	SHEET NO.	TOTAL SHEETS
1	MONT.	170-C	4	5



$\Delta 57^{\circ}50' L$
 $D 71$
 $L 826.0$
 $R 818.6$

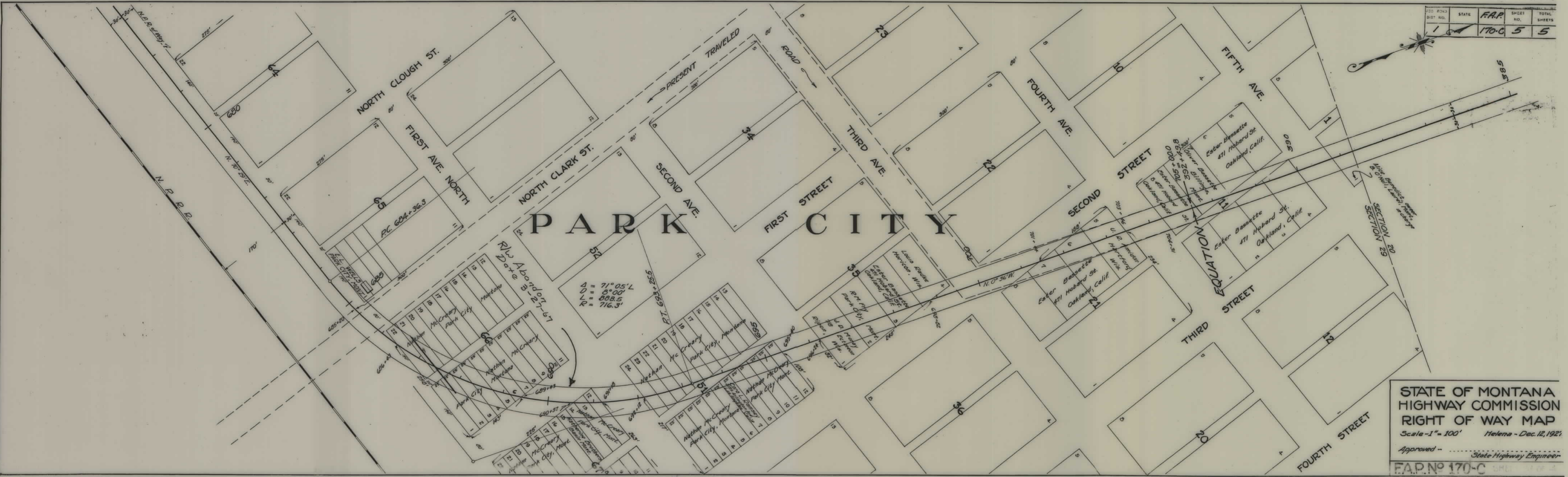
Netter, McCarty, Hunt
 Park City & Billings, Mont.
 S.E. 1/4 Sec. 20 & N.E. 1/4 Sec. 20
 except City Lots as noted
 see tentative map sheet 114
 (Copy sale to
 Howard MacGregor & Co. (Montana)
 Shields, N.D. & Park City, Montana)
 577-900 to 392-149.8 - 60' Co. R/O



It appears certain that only 60' of easement
 exists in the SE 1/4 of Sec. 16 JAB 12/27/94

STATE OF MONTANA
HIGHWAY COMMISSION
RIGHT OF WAY MAP
 Scale - 1" = 400' Helena - Dec. 12-1927
 Approved _____
 State Highway Engineer
F.A.P. No 170-C

DIST. NO.	STATE	F.A.P.	SHEET NO.	TOTAL SHEETS
1		170-C	5	5



STATE OF MONTANA
 HIGHWAY COMMISSION
 RIGHT OF WAY MAP
 Scale - 1" = 100' Helena - Dec. 12, 1921
 Approved - _____ State Highway Engineer
 F.A.P. No 170-C