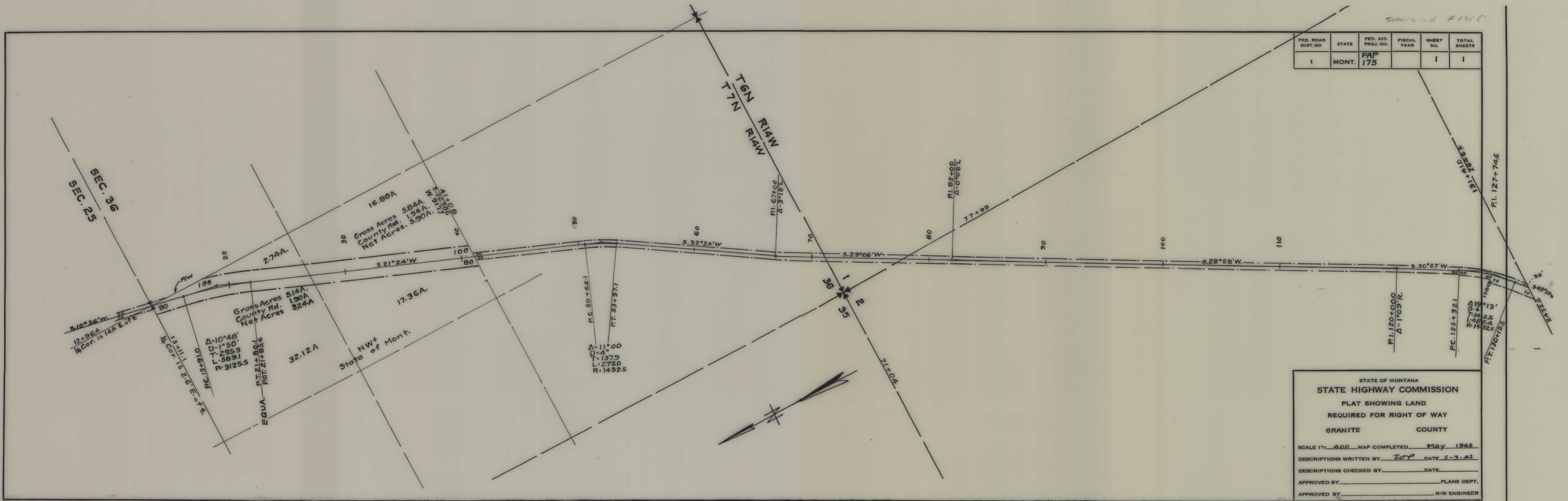


PLANS
NOT
TO
SCALE

Surveyed F175 (1)

FED. ROAD DIST. NO.	STATE	FED. AID PROJ. NO.	FISCAL YEAR	SHEET NO.	TOTAL SHEETS
1	MONT.	FAP 175		1	1



STATE OF MONTANA
STATE HIGHWAY COMMISSION
PLAT SHOWING LAND
REQUIRED FOR RIGHT OF WAY
GRANITE COUNTY

SCALE 1"= 400' MAP COMPLETED May 1945
DESCRIPTIONS WRITTEN BY EOP DATE 5-3-45
DESCRIPTIONS CHECKED BY DATE
APPROVED BY PLANS DEPT.
APPROVED BY R/W ENGINEER