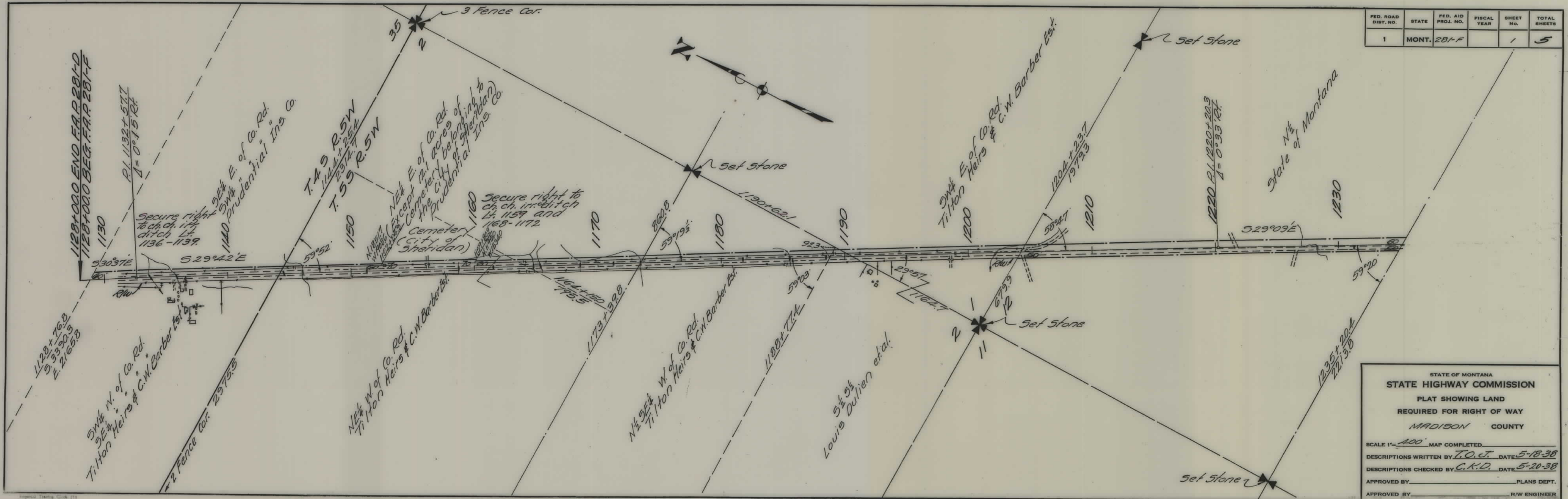


PLANS

NOT

TO

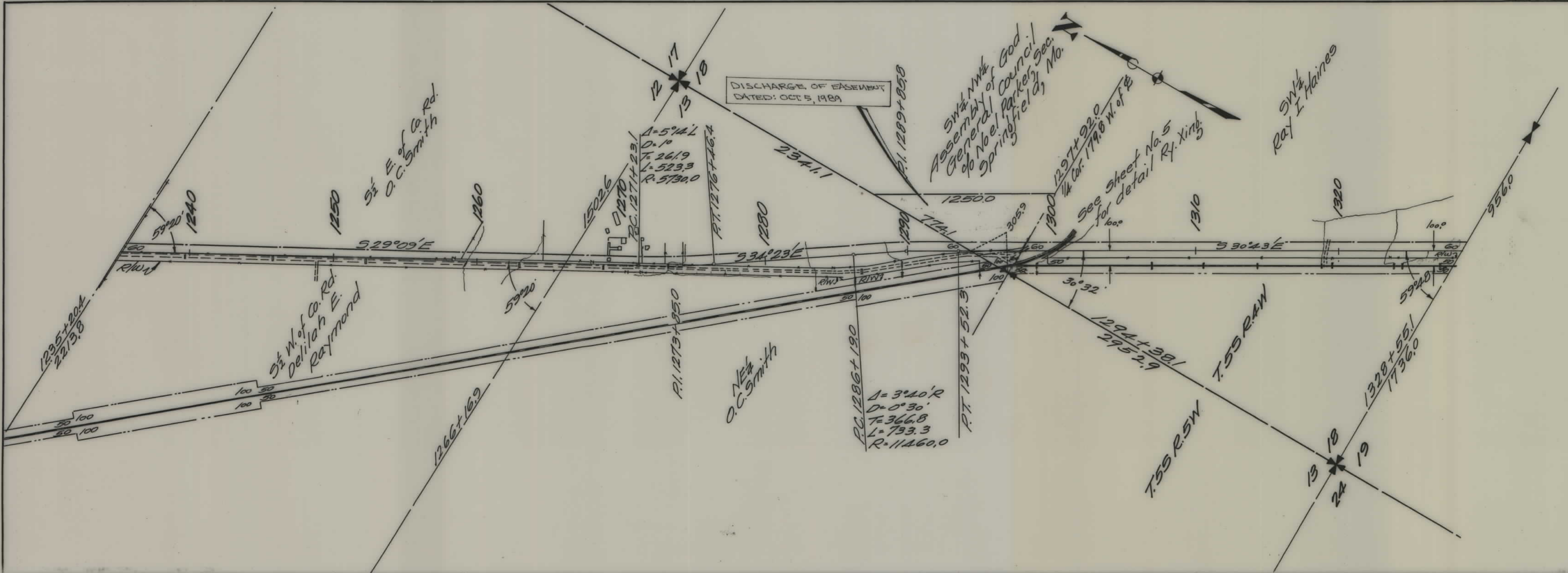
SCALE



FED. ROAD DIST. NO.	STATE	FED. AID PROJ. NO.	FISCAL YEAR	SHEET NO.	TOTAL SHEETS
1	MONT.	281-F		1	5

STATE OF MONTANA
 STATE HIGHWAY COMMISSION
 PLAT SHOWING LAND
 REQUIRED FOR RIGHT OF WAY
 MADISON COUNTY
 SCALE 1"=400' MAP COMPLETED
 DESCRIPTIONS WRITTEN BY T.O.J. DATE 5-18-38
 DESCRIPTIONS CHECKED BY C.K.D. DATE 5-20-38
 APPROVED BY _____ PLANS DEPT.
 APPROVED BY _____ R/W ENGINEER

FED. ROAD DIST. NO.	STATE	FED. AID PROJ. NO.	FISCAL YEAR	SHEET NO.	TOTAL SHEETS
1	MONT.	281-F		2	5



STATE OF MONTANA
 STATE HIGHWAY COMMISSION
 PLAT SHOWING LAND
 REQUIRED FOR RIGHT OF WAY
 MADISON COUNTY

SCALE 1" = 400' MAP COMPLETED _____

DESCRIPTIONS WRITTEN BY Johnston DATE 8-16-39

DESCRIPTIONS CHECKED BY Dalton DATE 8-17-39

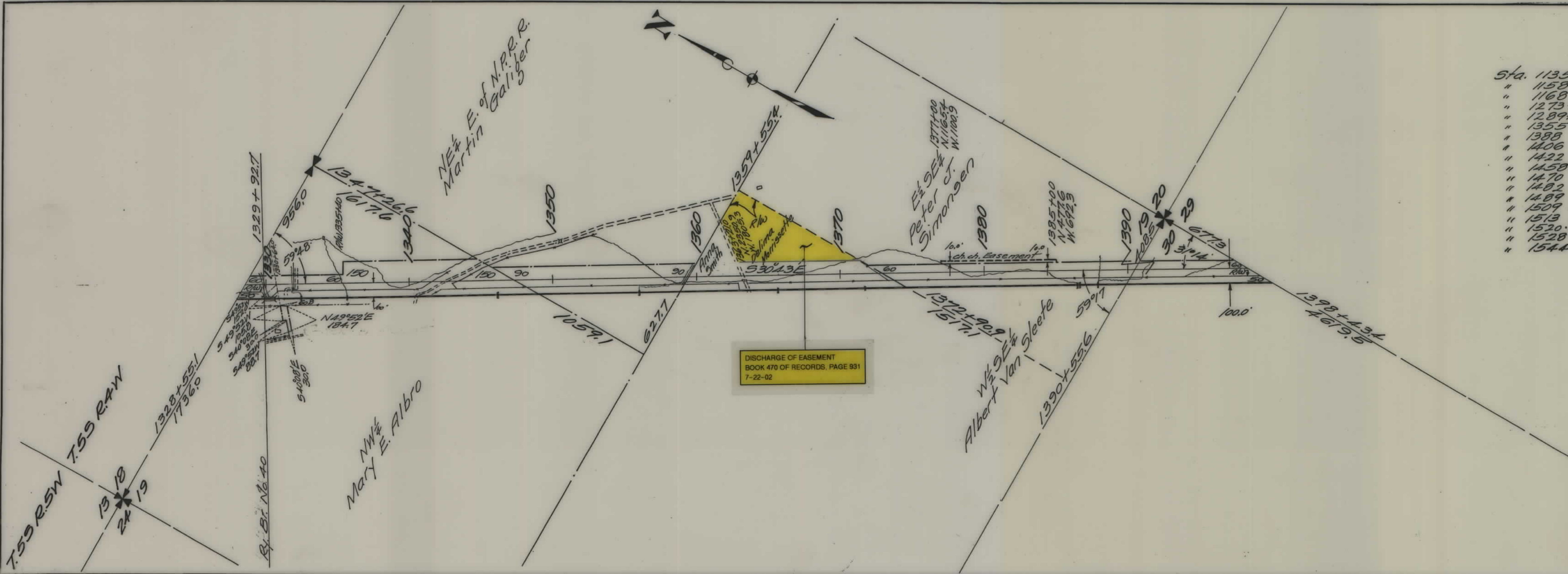
APPROVED BY _____ PLANS DEPT.

APPROVED BY _____ R/W ENGINEER

FED. ROAD DIST. NO.	STATE	FED. AID PROJ. NO.	FISCAL YEAR	SHEET No.	TOTAL SHEETS
1	MONT.	281-F		3	5

Channel Changes

Sta. 1135 to 1139	Lt. 5
" 1158 " 1160	Lt.
" 1168 " 1171	"
" 1273+27	"
" 1289+60	"
" 1355 to 1385	"
" 1388 " 1392	"
" 1406 " 1420	"
" 1422 " 1438	"
" 1458 " 1463	"
" 1470 " 1480	"
" 1482 " 1486	"
" 1489 " 1494	" and Rt.
" 1509 " 1511	" " "
" 1513 " 1518	" " "
" 1520 " 1529	Lt.
" 1528 " 1539	"
" 1544 " 1556	"



DISCHARGE OF EASEMENT
BOOK 470 OF RECORDS, PAGE 931
7-22-02

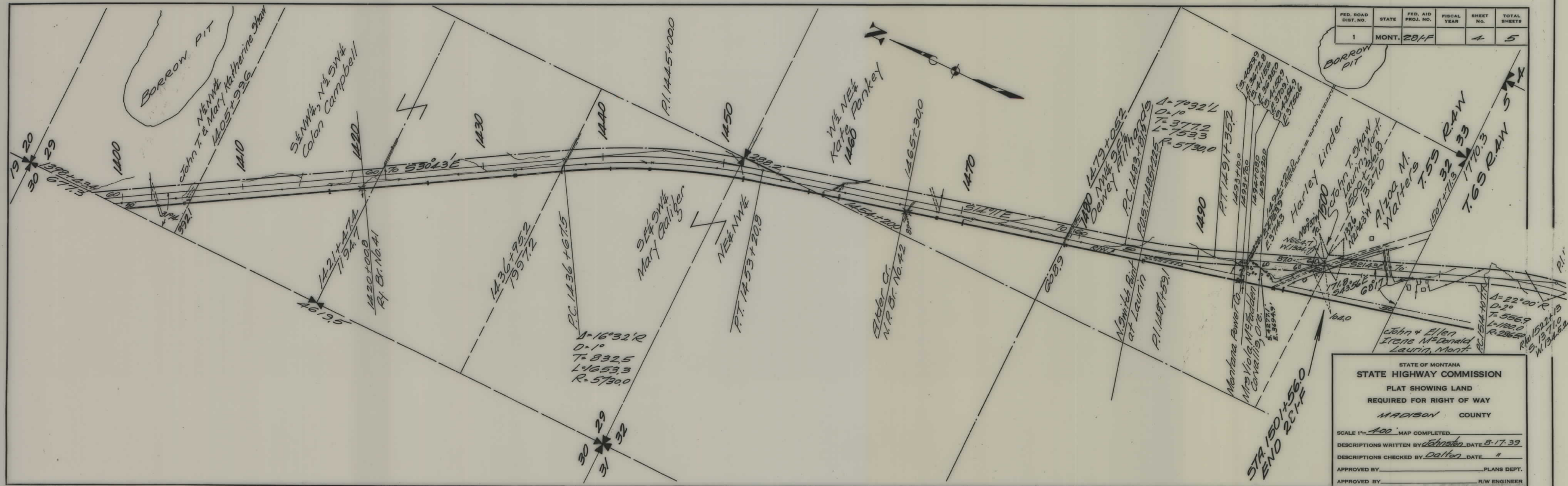
STATE OF MONTANA
STATE HIGHWAY COMMISSION
PLAT SHOWING LAND
REQUIRED FOR RIGHT OF WAY
MADISON COUNTY

SCALE 1" = 400' MAP COMPLETED

DESCRIPTIONS WRITTEN BY Johnston DATE 8-16-39
DESCRIPTIONS CHECKED BY Dalton DATE 8-17-39

APPROVED BY _____ PLANS DEPT.
APPROVED BY _____ R/W ENGINEER

FED. ROAD DIST. NO.	STATE	FED. AID PROJ. NO.	FISCAL YEAR	SHEET NO.	TOTAL SHEETS
1	MONT.	281-F		4	5



STATE OF MONTANA
STATE HIGHWAY COMMISSION
PLAT SHOWING LAND
REQUIRED FOR RIGHT OF WAY
MADISON COUNTY

SCALE 1" = 400' MAP COMPLETED

DESCRIPTIONS WRITTEN BY Johnston DATE 8-17-39

DESCRIPTIONS CHECKED BY Dalton DATE "

APPROVED BY _____ PLANS DEPT.

APPROVED BY _____ R/W ENGINEER

$\Delta = 16^{\circ}32' R$
 $D = 1^{\circ}$
 $T = 832.5$
 $L = 1653.3$
 $R = 5730.0$

$\Delta = 70^{\circ}32' L$
 $D = 1^{\circ}$
 $T = 377.2$
 $L = 153.3$
 $R = 5730.0$

$\Delta = 22^{\circ}00' R$
 $D = 2^{\circ}$
 $T = 556.9$
 $L = 1100.0$
 $R = 2865.0$

STA 1501+56.0
END R.C.P.F.

RIGHT OF WAY BUREAU
TRANSMITTAL MEMO

7/13/11
10-17-03

W 699 F00 001

TO: Shane Mintz, Acting Supervisor
Real Estate Services Section

FROM: *for* *Ramona Elkins*
Bruce J. Masiak
R/W Plans Section

DATE: August 14, 2003

SUBJECT: Discharge of Easement
Project: FAP 281-F
Parcel 14

Sheet 3 of the right of way plans has been revised to reflect the Discharge of Easement per your memo dated August 9, 2002.

In making this revision, we noticed that the recorded Discharge of Easement and memo incorrectly reference project FAP 28-F rather than FAP 281-F.

initial: *BJM*

cc: Steve Nickel

