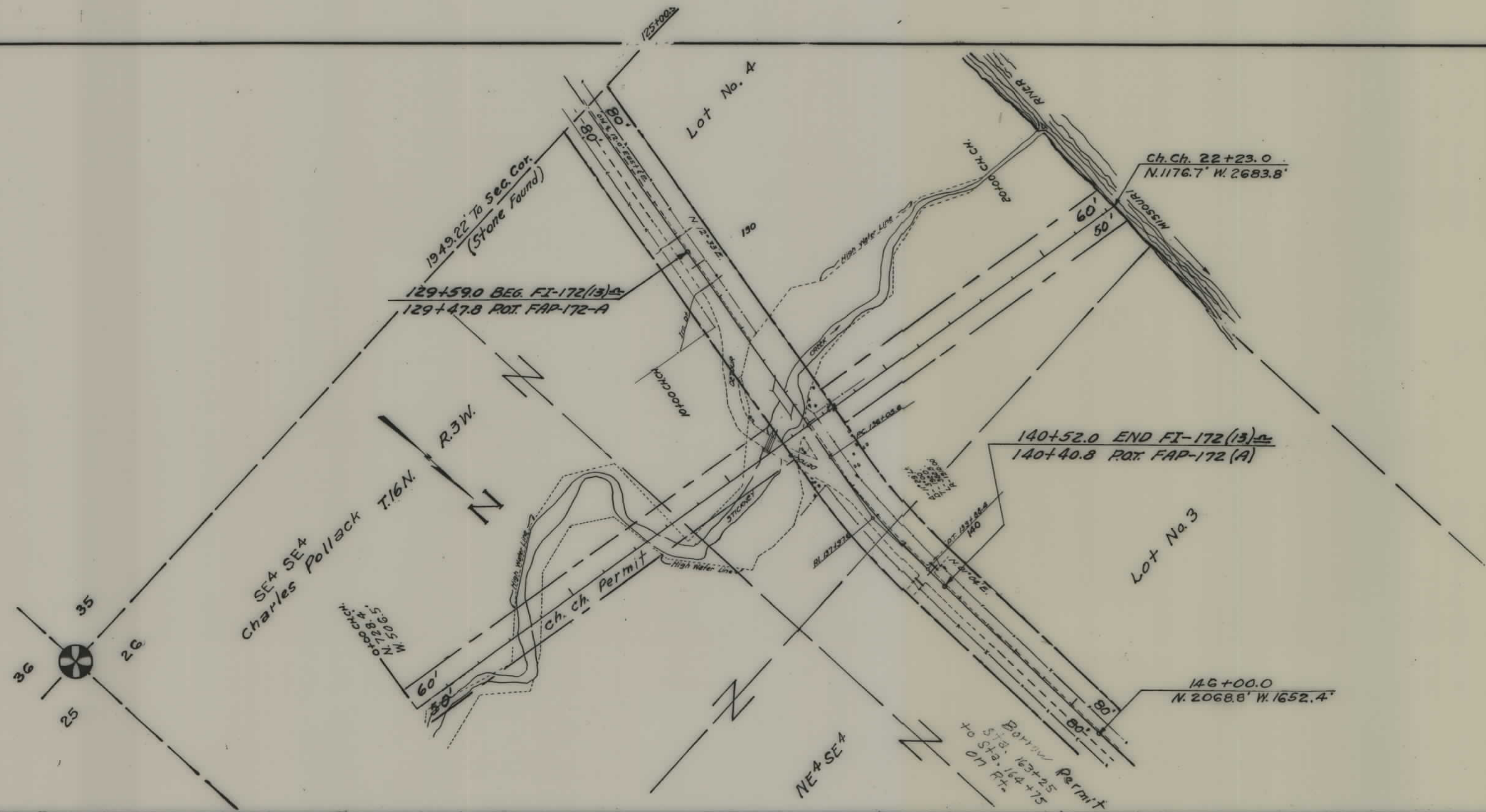


PLANS
NOT
TO
SCALE

FED. ROAD DIST NO.	STATE	FED. AID PROJ. NO.	R/W NO.	SHEET NO.	TOTAL SHEETS
8	MONT.	FI 172 (13)	1172-13	1	1



STATE OF MONTANA
 STATE HIGHWAY COMMISSION
 PLAT SHOWING LAND
 REQUIRED FOR RIGHT OF WAY
Lewis & Clark COUNTY

SCALE 1" = 200' MAP COMPLETED 7-21-53
 DESCRIPTIONS WRITTEN BY T.H.J. DATE 7-21-53
 DESCRIPTIONS CHECKED BY M.B. DATE 7-22-53

APPROVED BY _____ R/W ENGINEER

2,000 cu. yd. will fill old L where needed

FI 172(13) SHT 1 OF 1

4