

PLANS
NOT
TO
SCALE

FED. ROAD DIST. NO.	STATE	FED. AID PROJ. NO.	R/W No.	SHEET No.	TOTAL SHEETS
1	MONT.	FI-185(5)	1185-05	1	4



STATE OF MONTANA
 STATE HIGHWAY COMMISSION
 PLAT SHOWING LAND
 REQUIRED FOR RIGHT OF WAY
 PARK COUNTY

SCALE 1" = 400' MAP COMPLETED Aug. 1949.

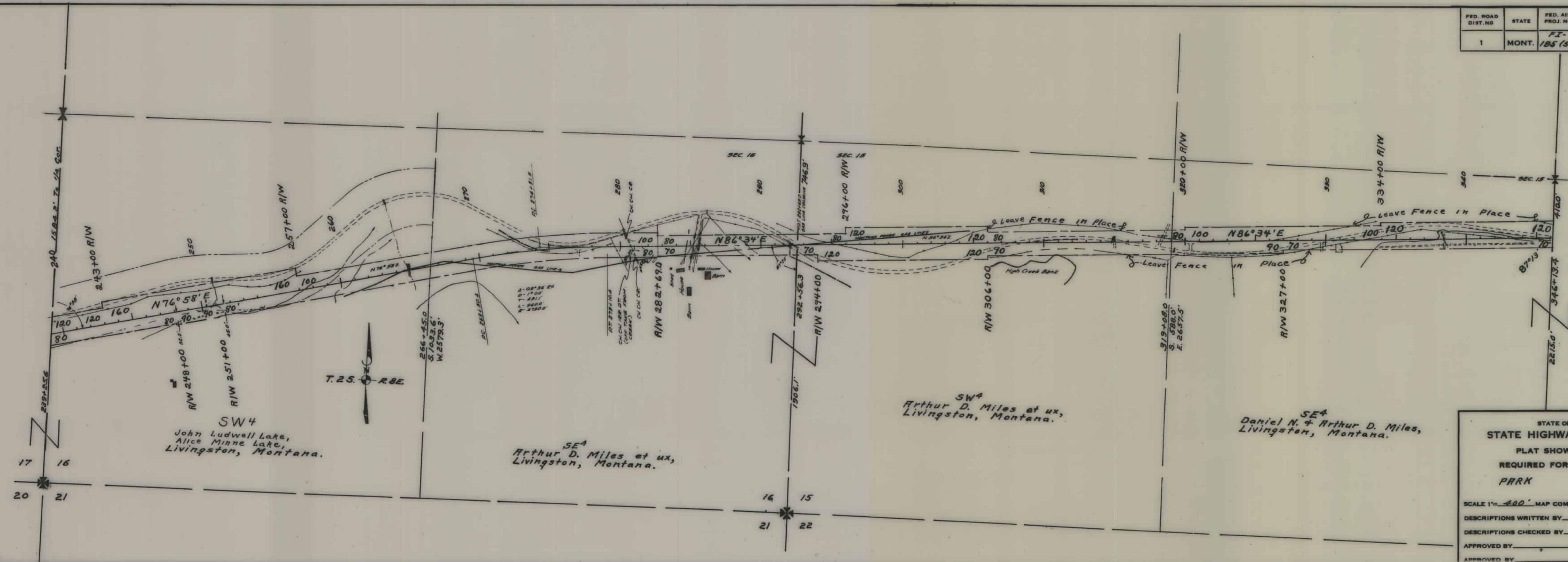
DESCRIPTIONS WRITTEN BY _____ DATE _____

DESCRIPTIONS CHECKED BY _____ DATE _____

APPROVED BY _____ PLANS DEPT.

APPROVED BY _____ R/W ENGINEER

FED. ROAD DIST. NO.	STATE	FED. AID PROJ. NO.	R/W No.	SHEET NO.	TOTAL SHEETS
1	MONT.	FI-185(5)	05.	2	4



STATE OF MONTANA
 STATE HIGHWAY COMMISSION
 PLAT SHOWING LAND
 REQUIRED FOR RIGHT OF WAY
 PARK COUNTY

SCALE 1" = 400' MAP COMPLETED Aug. 1929

DESCRIPTIONS WRITTEN BY _____ DATE _____

DESCRIPTIONS CHECKED BY _____ DATE _____

APPROVED BY _____ PLANS DEPT.

APPROVED BY _____ R/W ENGINEER

FED. ROAD DIST. NO.	STATE	FED. AID PROJ. NO.	R/W No.	SHEET NO.	TOTAL SHEETS
1	MONT.	FI-185(5)	1185-05	3	4

All Sec. 13 except SW⁴ Lying So. of Co. Rd. (Fence).
William + Katherine McCormick,

N²S² Sec. 14
Daniel N. + Arthur D. Miles,

All SW⁴ Lying So. of Co. Rd. (Fence) except
above deeded parcels.
N. E. Hyles + Gertrude C. Hyles,

STATE OF MONTANA
STATE HIGHWAY COMMISSION
PLAT SHOWING LAND
REQUIRED FOR RIGHT OF WAY
PARK COUNTY

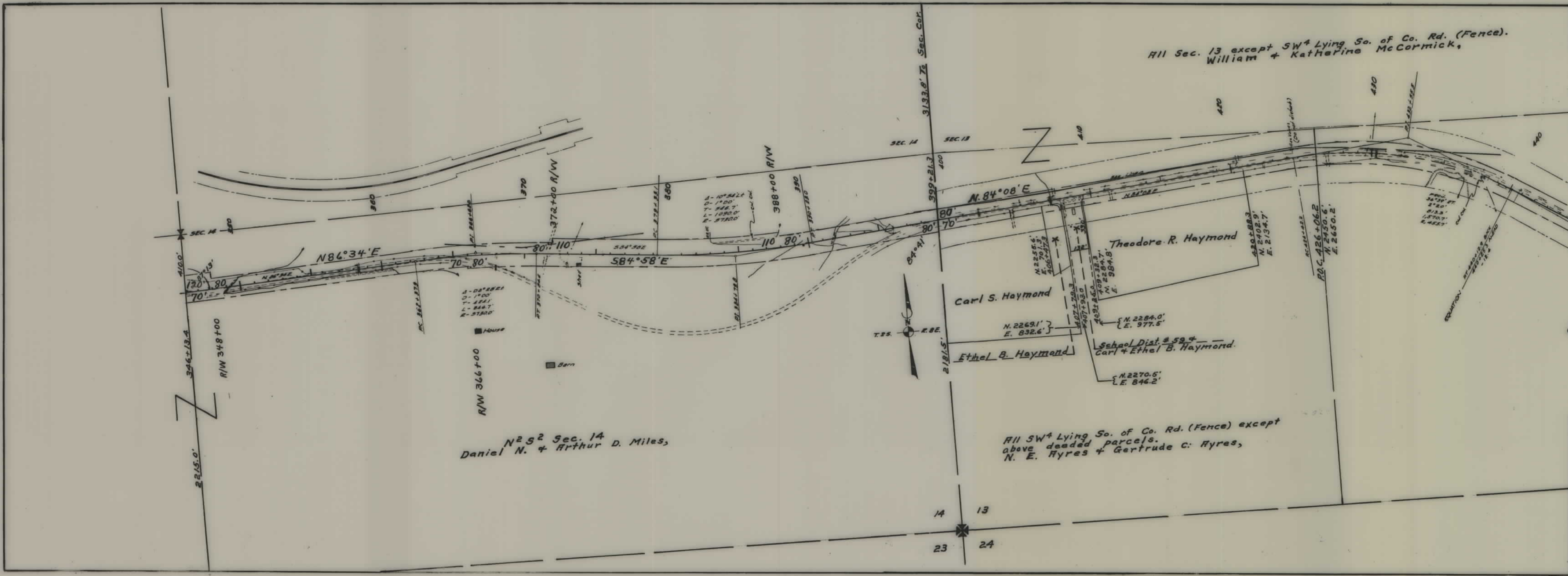
SCALE 1" = 400' MAP COMPLETED Aug. 1949.

DESCRIPTIONS WRITTEN BY _____ DATE _____

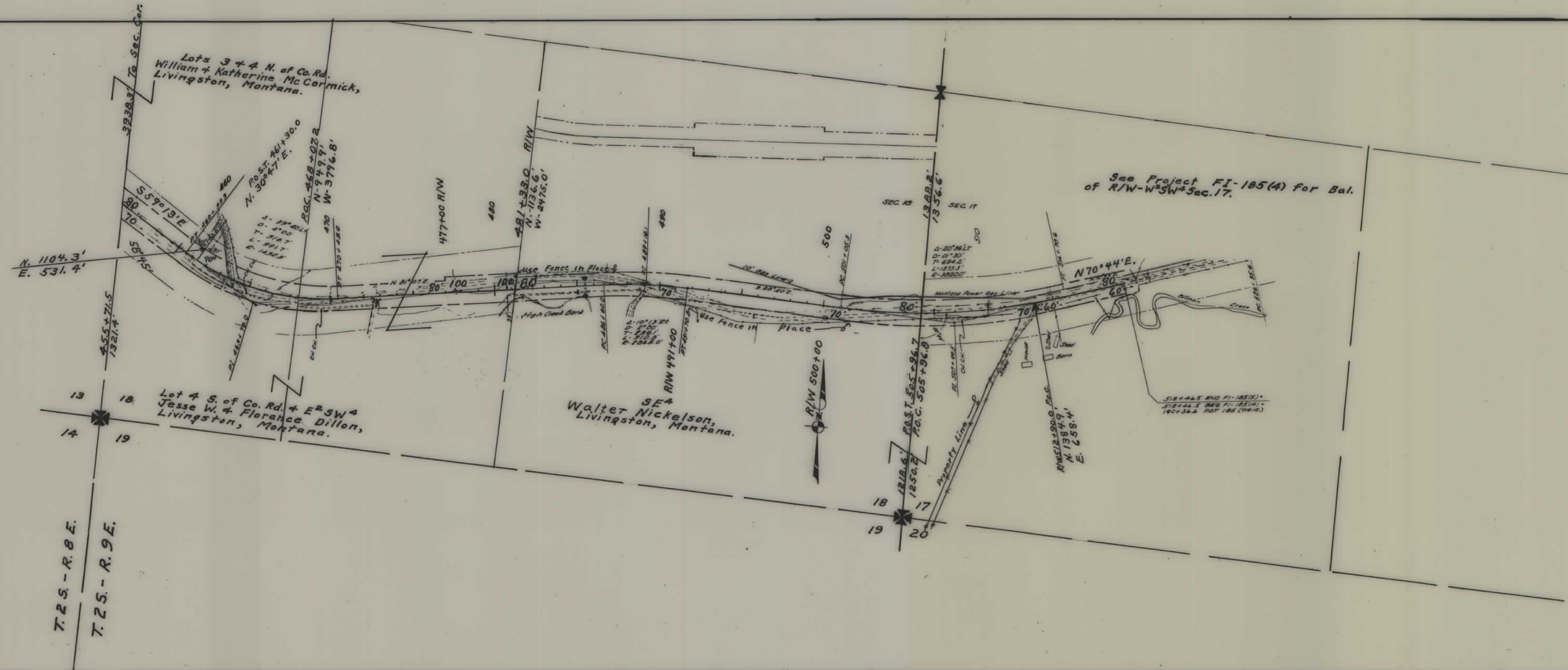
DESCRIPTIONS CHECKED BY _____ DATE _____

APPROVED BY _____ PLANS DEPT.

APPROVED BY _____ R/W ENGINEER



FED. ROAD DIST. NO.	STATE	FED. AID PROJ. NO.	R/W No.	SHEET NO.	TOTAL SHEETS
1	MONT.	FI-185(5)	1185-05	4	4



STATE OF MONTANA
STATE HIGHWAY COMMISSION
 PLAT SHOWING LAND
 REQUIRED FOR RIGHT OF WAY
PARK COUNTY

SCALE 1" = 400' MAP COMPLETED Aug. 1949
 DESCRIPTIONS WRITTEN BY _____ DATE _____
 DESCRIPTIONS CHECKED BY _____ DATE _____
 APPROVED BY _____ PLANS DEPT.
 APPROVED BY _____ R/W ENGINEER

4