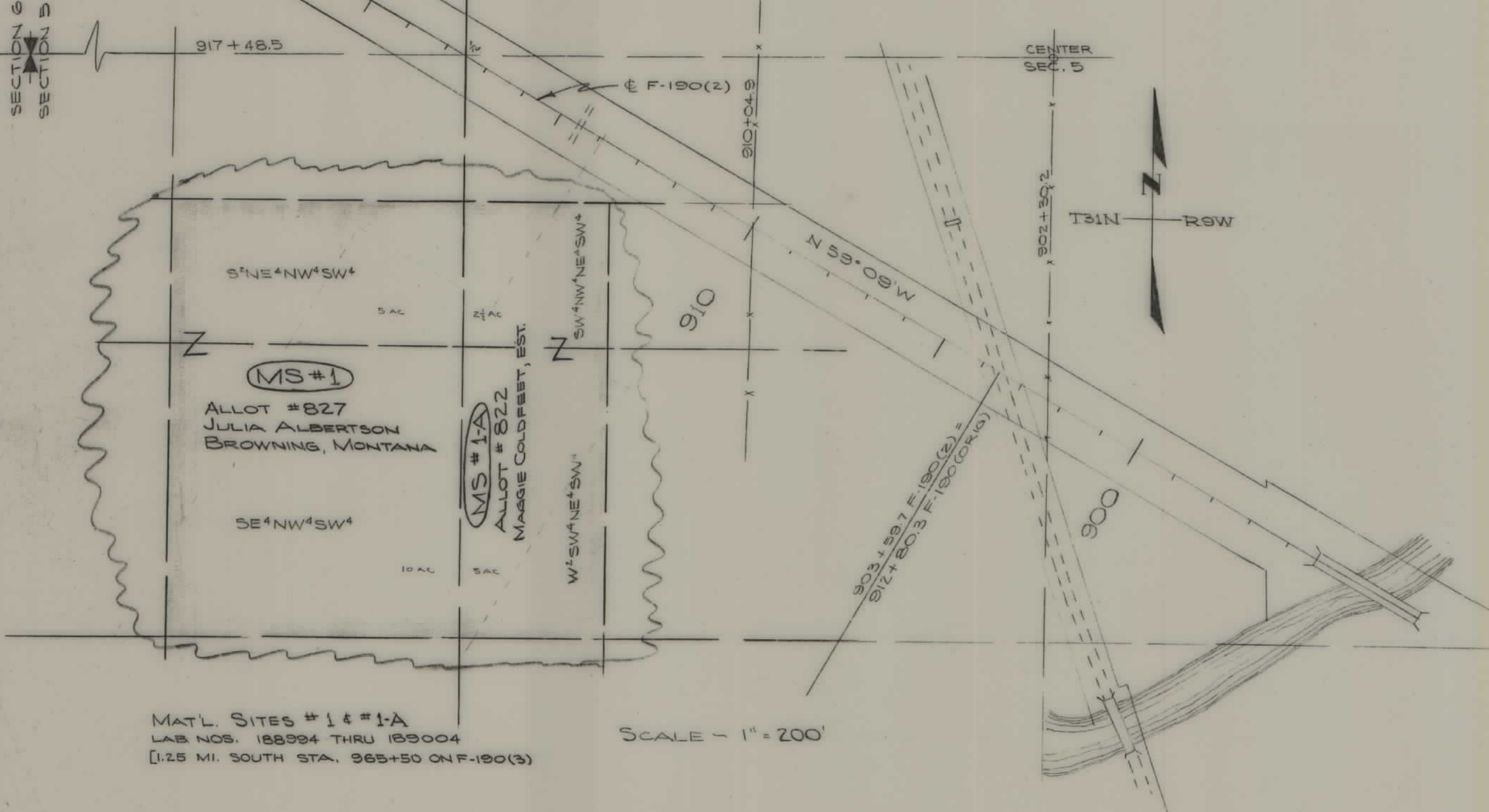


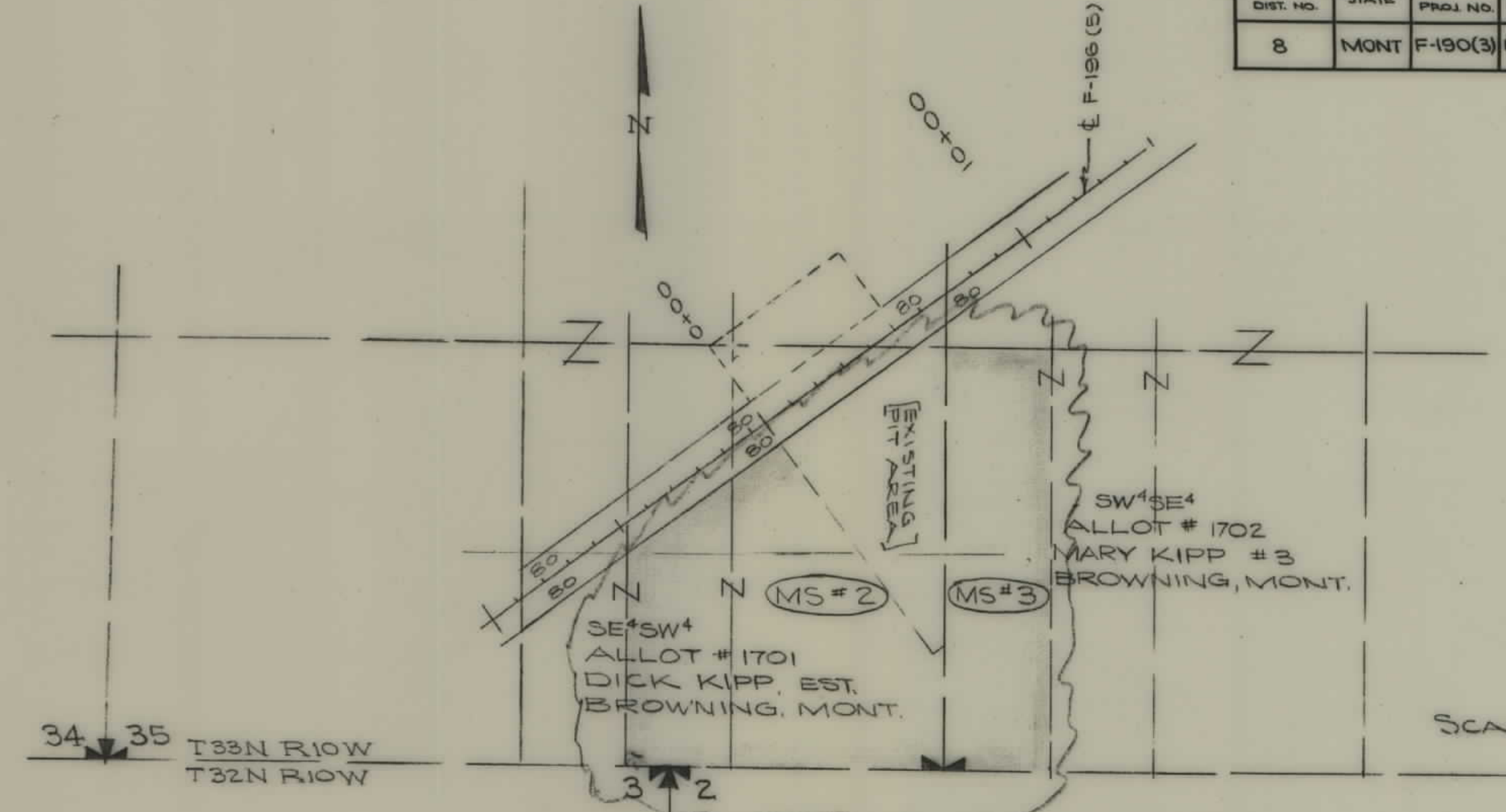
PLANS
NOT
TO
SCALE

SECTION 6
SECTION 5

FED. ROAD DIST. NO.	STATE	FED AID PROJ NO.	RAW NO.	SHEET NO.	TOTAL SHEETS
8	MONT	F-190(3)	1190-03		



MAT'L. SITES # 1 & #1-A
LAB NOS. 188994 THRU 189004
[1.25 MI. SOUTH STA. 965+50 ON F-190(3)]



MAT'L SITES # 2 & #3
LAB NOS. 199069 THRU 199078
[4.6 MI. NE STA. 1338+00 ON F-190(3)]

STATE OF MONTANA
STATE HIGHWAY COMMISSION
LAND REQUIRED FOR MATERIAL SITES
GLACIER COUNTY, MONTANA