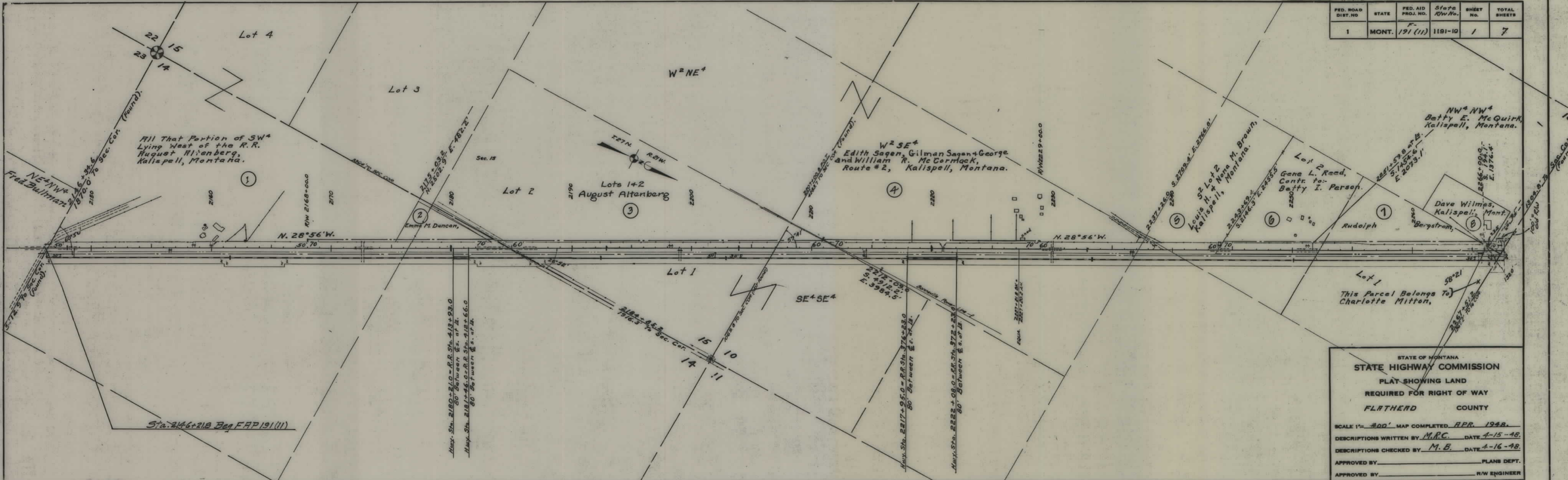


PLANS
NOT
TO
SCALE

FED. ROAD DIST. NO.	STATE	FED. AID PROJ. NO.	Sta. R/W No.	SHEET NO.	TOTAL SHEETS
1	MONT.	191 (11)	1191-10	1	7

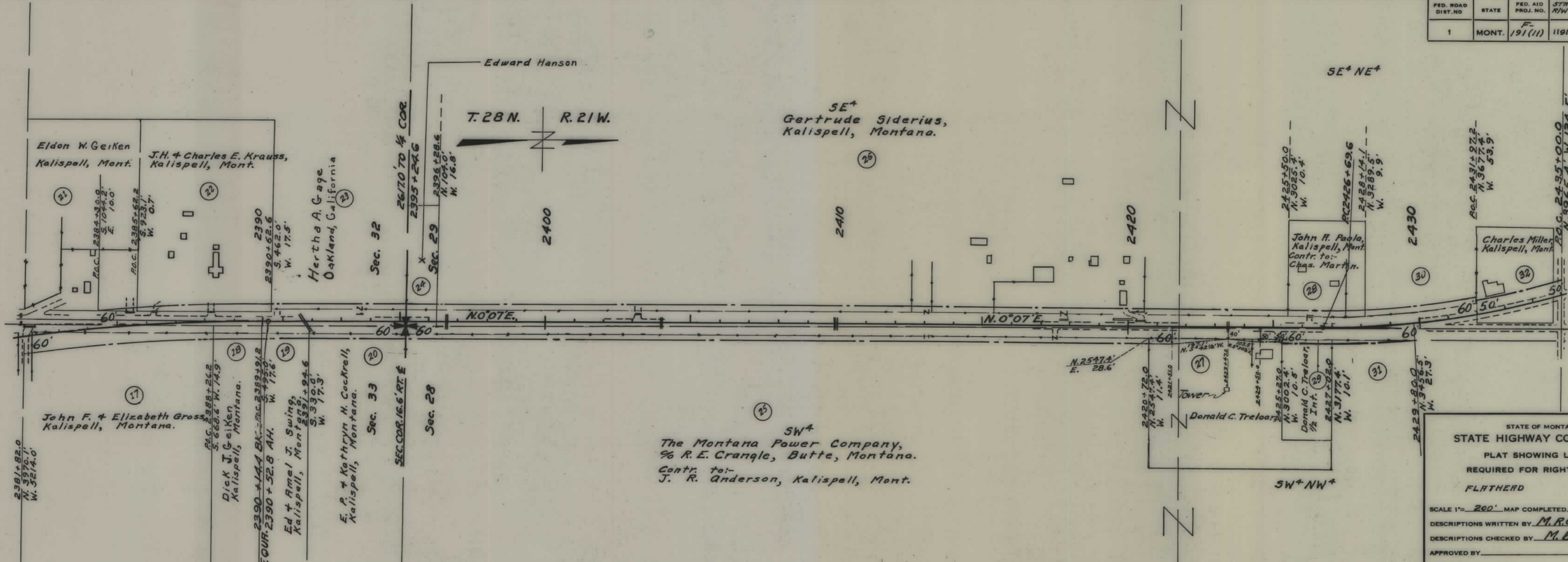


STATE OF MONTANA
STATE HIGHWAY COMMISSION
 PLAT SHOWING LAND
 REQUIRED FOR RIGHT OF WAY
 FLATHERD COUNTY

SCALE 1" = 400' MAP COMPLETED APR. 1948.
 DESCRIPTIONS WRITTEN BY M.R.C. DATE 4-15-48.
 DESCRIPTIONS CHECKED BY M.B. DATE 4-16-48.

APPROVED BY _____ PLANS DEPT.
 APPROVED BY _____ R/W ENGINEER

FED. ROAD DIST. NO.	STATE	FED. AID PROJ. NO.	STATE R/W NO.	SHEET NO.	TOTAL SHEETS
1	MONT.	F-191(11)	1191-10	3	7



SW⁴
 The Montana Power Company,
 % R. E. Cranley, Butte, Montana.
 Contr. to:
 J. R. Anderson, Kalispell, Mont.

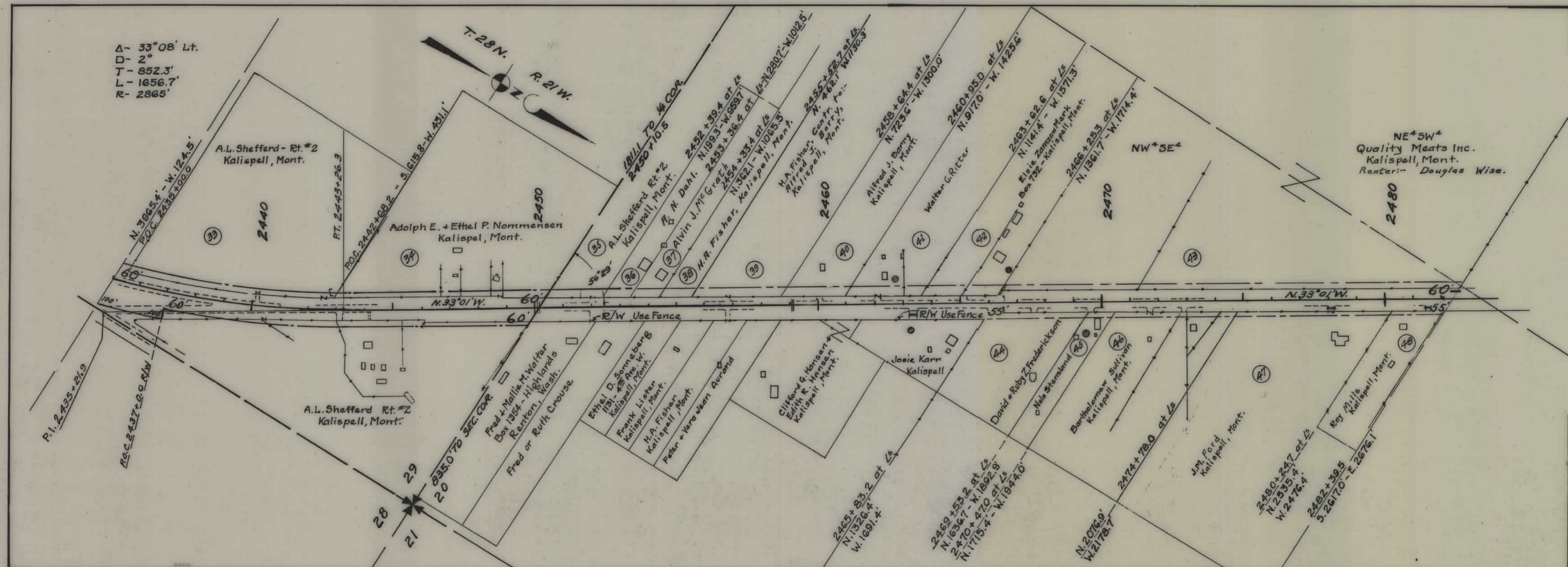
STATE OF MONTANA
 STATE HIGHWAY COMMISSION
 PLAT SHOWING LAND
 REQUIRED FOR RIGHT OF WAY
 FLATHEAD COUNTY

SCALE 1" = 200' MAP COMPLETED APR. 1948.
 DESCRIPTIONS WRITTEN BY M.R.C. DATE 4-16-48.
 DESCRIPTIONS CHECKED BY M.B. DATE 4-17-48.
 APPROVED BY _____ PLANS DEPT.
 APPROVED BY _____ R/W ENGINEER

Δ = 33° 08' Lt.
 D = 2°
 T = 852.3'
 L = 1656.7'
 R = 2865.0'

FED. ROAD DIST. NO.	STATE	FED. AID PROJ. NO.	STATE R/W NO.	SHEET No.	TOTAL SHEETS
1	MONT.	F191(11)	1181-10	4	7

Δ - 33°08' Lt.
 D - 2°
 T - 852.3'
 L - 1656.7'
 R - 2865'



NE⁴SW⁴
 Quality Meats Inc.
 Kalispell, Mont.
 Renter:- Douglas Wise.

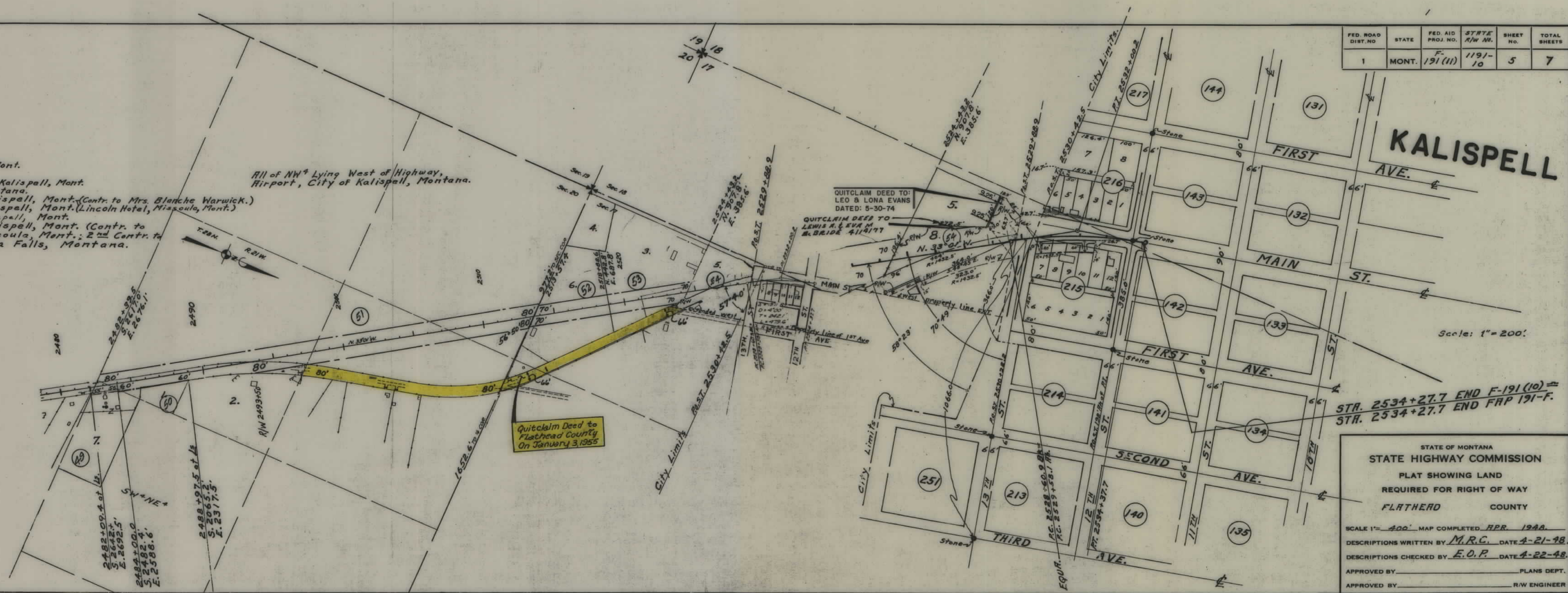
STATE OF MONTANA
STATE HIGHWAY COMMISSION
 PLAT SHOWING LAND
 REQUIRED FOR RIGHT OF WAY
 FLATHEAD COUNTY
 SCALE 1" = 200' MAP COMPLETED APR. 1948
 DESCRIPTIONS WRITTEN BY M.R.C. DATE 4-20-48
 DESCRIPTIONS CHECKED BY E.O.P. DATE 4-21-48
 APPROVED BY _____ PLANS DEPT.
 APPROVED BY _____ R/W ENGINEER

FED. ROAD DIST. NO.	STATE	FED. AID PROJ. NO.	STATE R/W NO.	SHEET NO.	TOTAL SHEETS
1	MONT.	F-191(11)	1191-10	5	7

OWNERS :-

1. David F. Roseneau, Kalispell, Mont.
2. R. J. Fopp, Somers, Mont.
3. Howard J. + Mabel L. Poston, Kalispell, Mont.
4. James B. Hill, Kalispell, Montana.
5. Frank + Jennie Voorhees, Kalispell, Mont. (Contr. to Mrs. Blanche Warwick.)
6. George Manley Thomas, Kalispell, Mont. (Lincoln Hotel, Missoula, Mont.)
7. Irene Kelso + William Taft, Kalispell, Mont.
8. Frank + Jennie Voorhees, Kalispell, Mont. (Contr. to Mrs. Blanche Warwick, Missoula, Mont.; 2nd Contr. to Mrs. F.W. Evers, Columbia Falls, Montana.

All of NW⁴ Lying West of Highway, Airport, City of Kalispell, Montana.



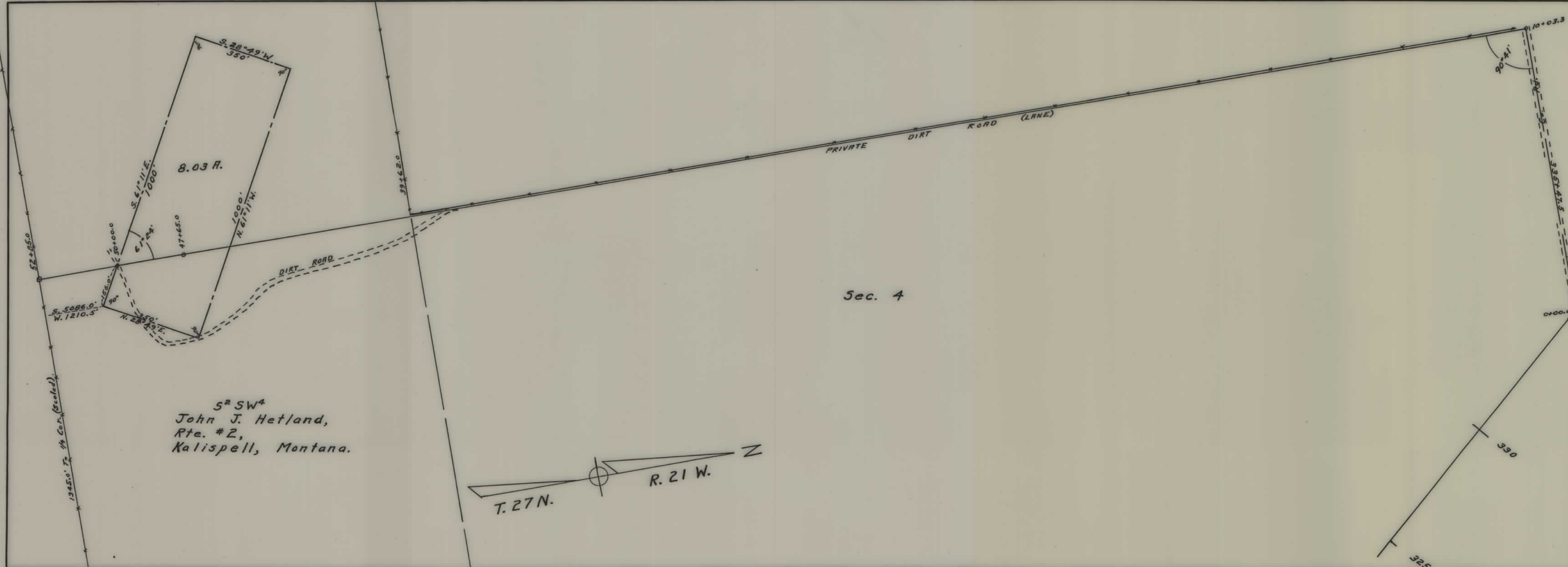
Scale: 1" = 200'

STR. 2534+27.7 END F-191(10) =
STR. 2534+27.7 END FRP 191-F.

STATE OF MONTANA
 STATE HIGHWAY COMMISSION
 PLAT SHOWING LAND
 REQUIRED FOR RIGHT OF WAY
 FLATHEAD COUNTY

SCALE 1" = 400' MAP COMPLETED APR. 1948.
 DESCRIPTIONS WRITTEN BY M.R.C. DATE 4-21-48.
 DESCRIPTIONS CHECKED BY E.O.P. DATE 4-22-48.

APPROVED BY _____ PLANS DEPT.
 APPROVED BY _____ R/W ENGINEER



FED. ROAD DIST. NO.	STATE	FED. AID PROJ. NO.	STATE RW No.	SHEET NO.	TOTAL SHEETS
1	MONT.	F-191 (11)	1191-10	7	7

STATE OF MONTANA
 STATE HIGHWAY COMMISSION
 PLAT SHOWING LAND
 REQUIRED FOR RIGHT OF WAY
 FLATHERD COUNTY

SCALE 1" = 200' MAP COMPLETED MAY 1948.

DESCRIPTIONS WRITTEN BY _____ DATE _____

DESCRIPTIONS CHECKED BY _____ DATE _____

APPROVED BY _____ PLANS DEPT.

APPROVED BY _____ R/W ENGINEER