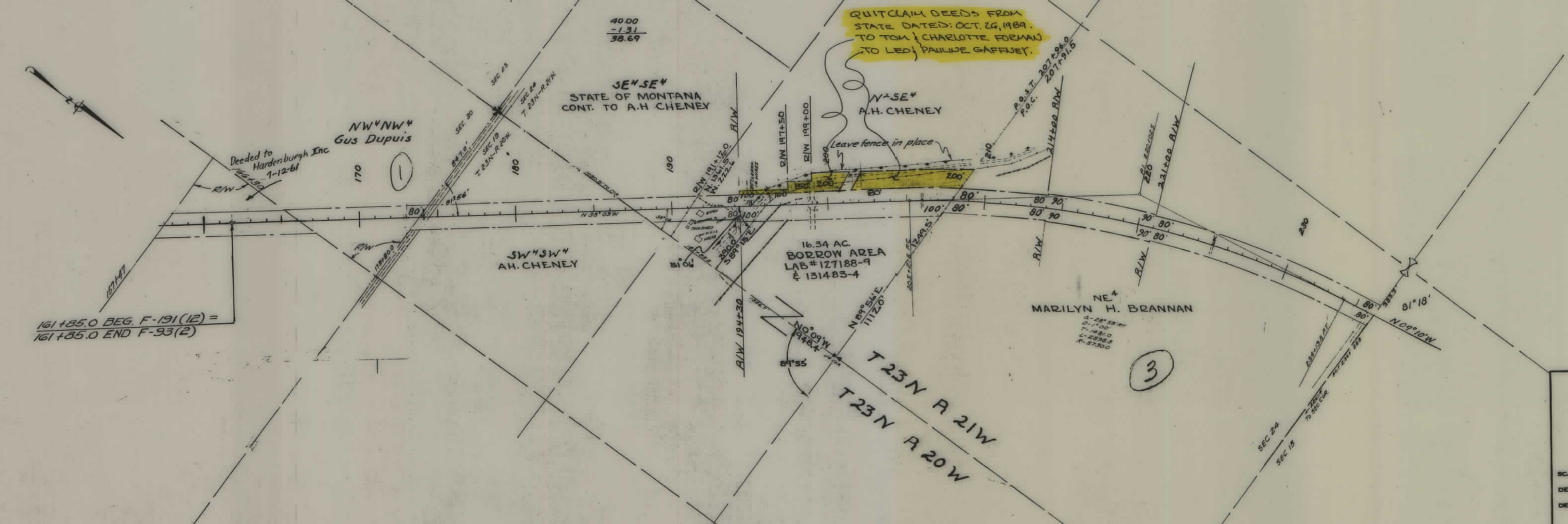


PLANS
NOT
TO
SCALE

| FED. ROAD DIST. NO. | STATE | FED. AID PROJ. NO. | R/W No. | SHEET NO. | TOTAL SHEETS |
|---------------------|-------|--------------------|---------|-----------|--------------|
| 8 | MONT. | F 191(12) | 1191-12 | 1 | 2 |

Construction Contract Awarded June 17, 1953



STATE OF MONTANA
 STATE HIGHWAY COMMISSION
 PLAT SHOWING LAND
 REQUIRED FOR RIGHT OF WAY
 Lake COUNTY
 SCALE 1" = 400' MAP COMPLETED 8-7-52
 DESCRIPTIONS WRITTEN BY *ASM* DATE 8-7-52
 DESCRIPTIONS CHECKED BY *W.P.* DATE 8-7-52
 APPROVED BY *Malcolm Brantner* R/W ENGINEER

161+85.0 BEG. F-191(12) =
 161+85.0 END F-93(2)

16.34 AC.
 BORROW AREA
 LAB # 127188-9
 & 131483-4

QUITCLAIM DEEDS FROM
 STATE DATED: OCT. 26, 1989
 TO TOM & CHARLOTTE FORMAN
 TO LEO & PAULINE GAFFNEY.

SE 1/4 SE 1/4
 STATE OF MONTANA
 CONT. TO A.H. CHENEY

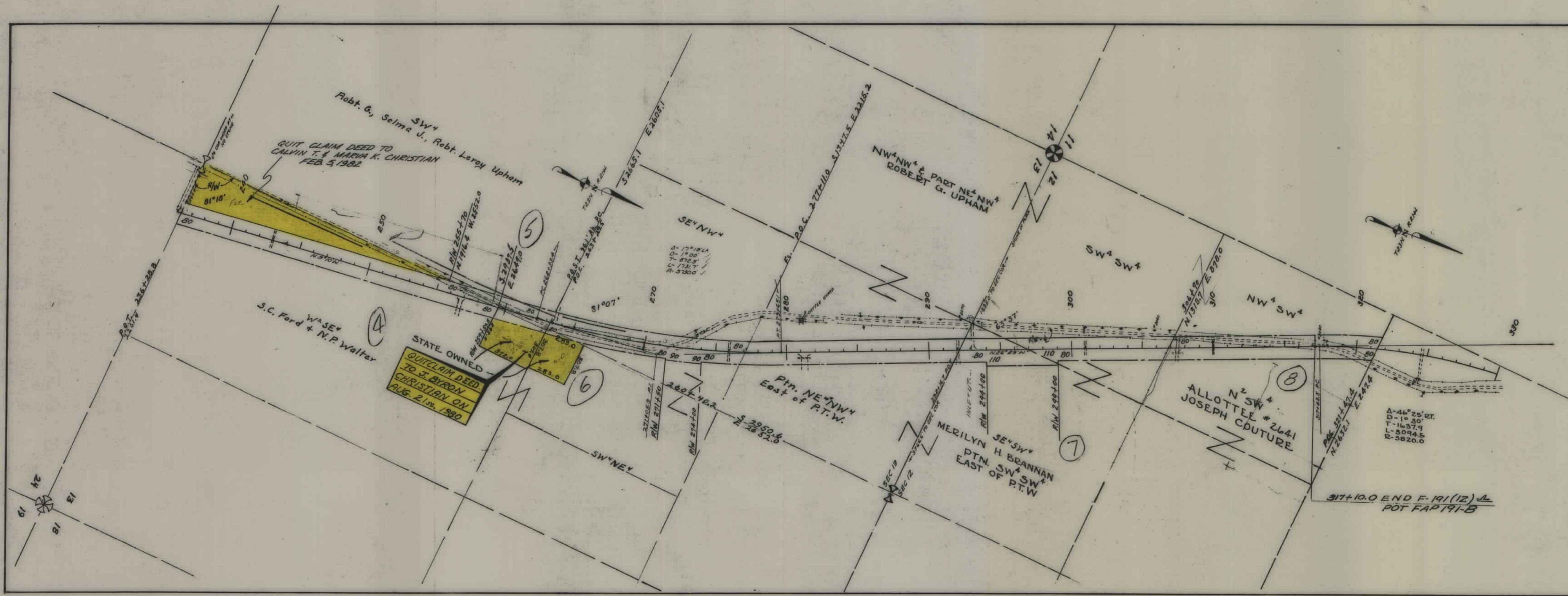
NW 1/4 NW 1/4
 Gus Dupuis

SW 1/4 SW 1/4
 A.H. CHENEY

NE 1/4
 MARILYN H. BRANNAN

T 23 N R 21 W
 T 23 N R 20 W

| FED. ROAD DIST. NO. | STATE | FED. AID PROJ. NO. | R/W No. | SHEET NO. | TOTAL SHEETS |
|---------------------|-------|--------------------|---------|-----------|--------------|
| 8 | MONT. | 191(12) | 1191-12 | 2 | 2 |



STATE OWNED
 QUITCLAIM DEED
 TO J. BYRON
 CHRISTIAN ON
 AUG. 21st, 1980

S.C. Ford + N.P. Walter
 WASEY

Robt. G. Selma J., Robt. Leroy Upham
 SW⁴
 QUIT CLAIM DEED TO
 CALVIN T. & MARVA K. CHRISTIAN
 FEB. 5, 1982

NW⁴NW⁴ & PART NE⁴NW⁴
 ROBERT G. UPHAM

N²SW⁴
 ALLOTTEE # 2641
 JOSEPH COUTURE

SE⁴SW⁴
 PTN. H BRANNAN
 SW⁴SW⁴
 EAST OF P.T.W.

PTN. NE⁴NW⁴
 East of P.T.W.

STATE OF MONTANA
 STATE HIGHWAY COMMISSION
 PLAT SHOWING LAND
 REQUIRED FOR RIGHT OF WAY
 Lake COUNTY

SCALE 1" = 400' MAP COMPLETED 8-7-52
 DESCRIPTIONS WRITTEN BY *D.M.* DATE 8-7-52
 DESCRIPTIONS CHECKED BY *M.B.* DATE 8-7-52

APPROVED BY *Malcolm Bowden* R/W ENGINEER