

PLANS
NOT
TO
SCALE

DEPARTMENT OF THE INTERIOR
 United States Indian Field Service
 Blackfeet Agency - Browning, Montana

3600

3600

1000

2400

2475

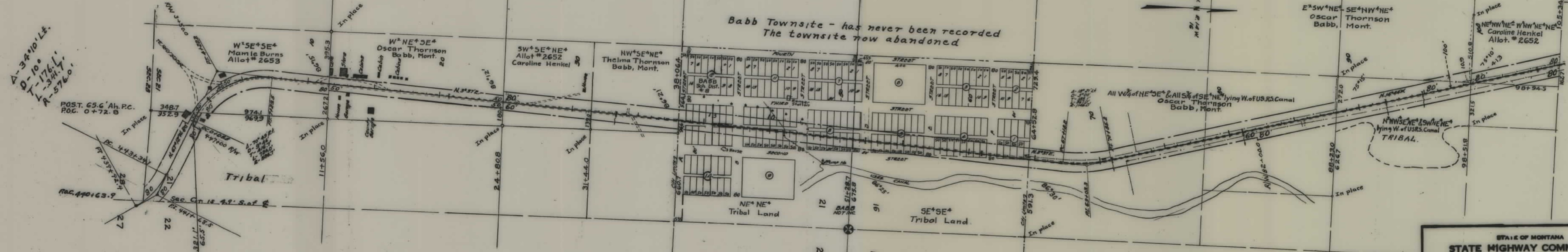
FED. ROAD DIST. NO.	STATE	FED. AID PROJ. NO.	STATE R/W No.	SHEET No.	TOTAL SHEETS
1	MONT.	F 208 (2)		1	5

APPROVED, sheets 1 to 4, inclusive, of F 208(2), as shown hereon, under authority vested in me by Secretarial Order No. 2252, dated September 9, 1946 (11 Fed. Reg. 10296), and the Order of the Commissioner of Indian Affairs, No. 544, dated September 24, 1947 (12 Fed. Reg. 6970), subject to the provisions of Section 4 of the Act of March 3, 1901 (31 Stat. 1084; 25 U. S. C., Section 311).

MAY 25th 1950

Rex D. Kildow
 Rex. D. Kildow, Superintendent

A-34+10' Lt.
 D-100
 T-176.1
 V-344.7
 A-576.0

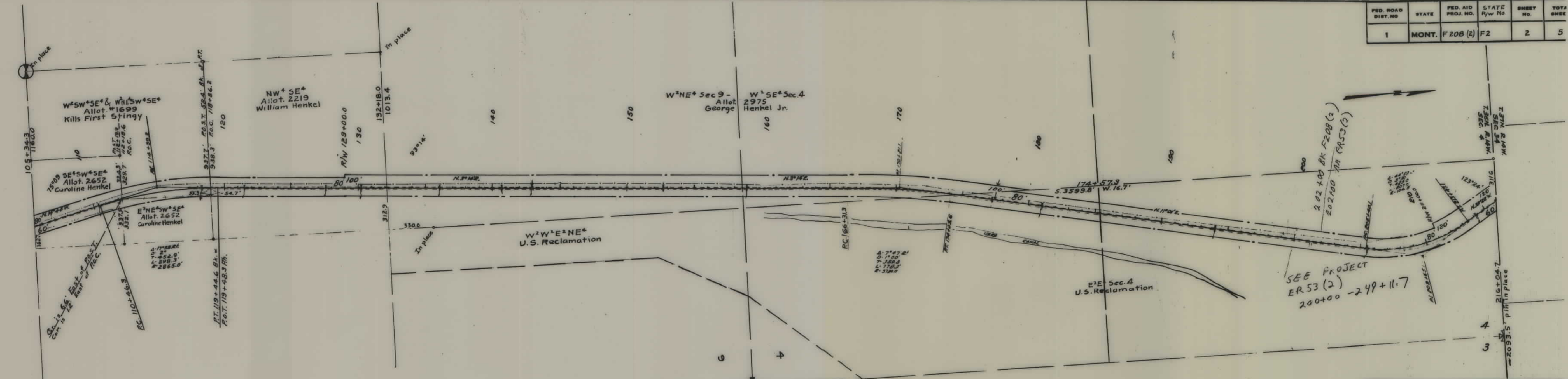


STATE OF MONTANA
STATE HIGHWAY COMMISSION
 PLAT SHOWING LAND
 REQUIRED FOR RIGHT OF WAY
 GLACIER COUNTY

SCALE 1" = 400' MAP COMPLETED May 5 1950
 DESCRIPTIONS WRITTEN BY MRC DATE 5-5-50
 DESCRIPTIONS CHECKED BY TOP DATE 5-6-50
 APPROVED BY _____ PLANS DEPT.
 APPROVED BY _____ R/W ENGINEER

01019

FED. ROAD DIST. NO.	STATE	FED. AID PROJ. NO.	STATE R/W No.	SHEET No.	TOTAL SHEET
1	MONT.	F 208 (2)	F2	2	5



DEPARTMENT OF THE INTERIOR
 Bureau of Land Management - Montana Land Office
 Billings, Montana

I hereby certify that the E¹/₂ Sec. 4, T. 36 N., R. 14 W.,
 the NE¹/₄ Sec. 34, T. 37 N., R. 14 W., is
 unpatented land and within the Blackfoot Indian Reservation.
 This map consists of Sheets 2 & 3, F 208(2).

June 21 1950

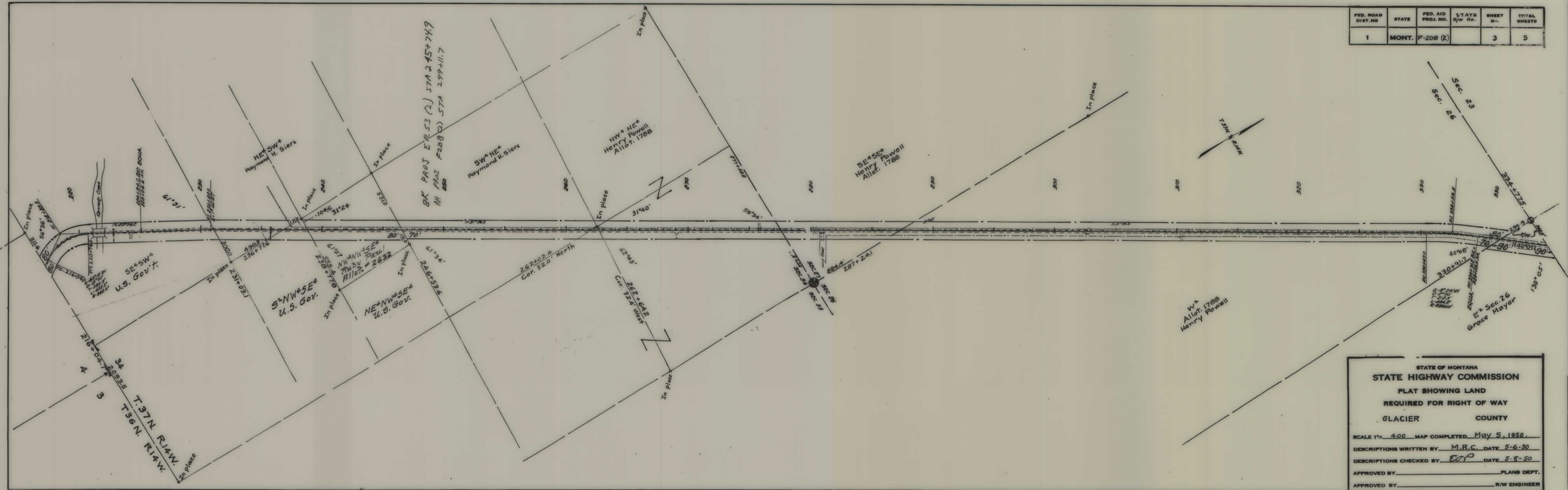
William Riddell
 WILLIAM RIDDELL Manager

(Revised 11-8-50, pursuant to auth. lr. Land Office 11-1-50)

STATE OF MONTANA
 STATE HIGHWAY COMMISSION
 PLAT SHOWING LAND
 REQUIRED FOR RIGHT OF WAY
 GLACIER COUNTY

SCALE 1" = 400' MAP COMPLETED May 5 1950
 DESCRIPTIONS WRITTEN BY M.R.C. DATE 5-5-50
 DESCRIPTIONS CHECKED BY JOP DATE 5-8-50
 APPROVED BY _____ PLANS BY _____
 APPROVED BY _____ R/W ENGINEER _____

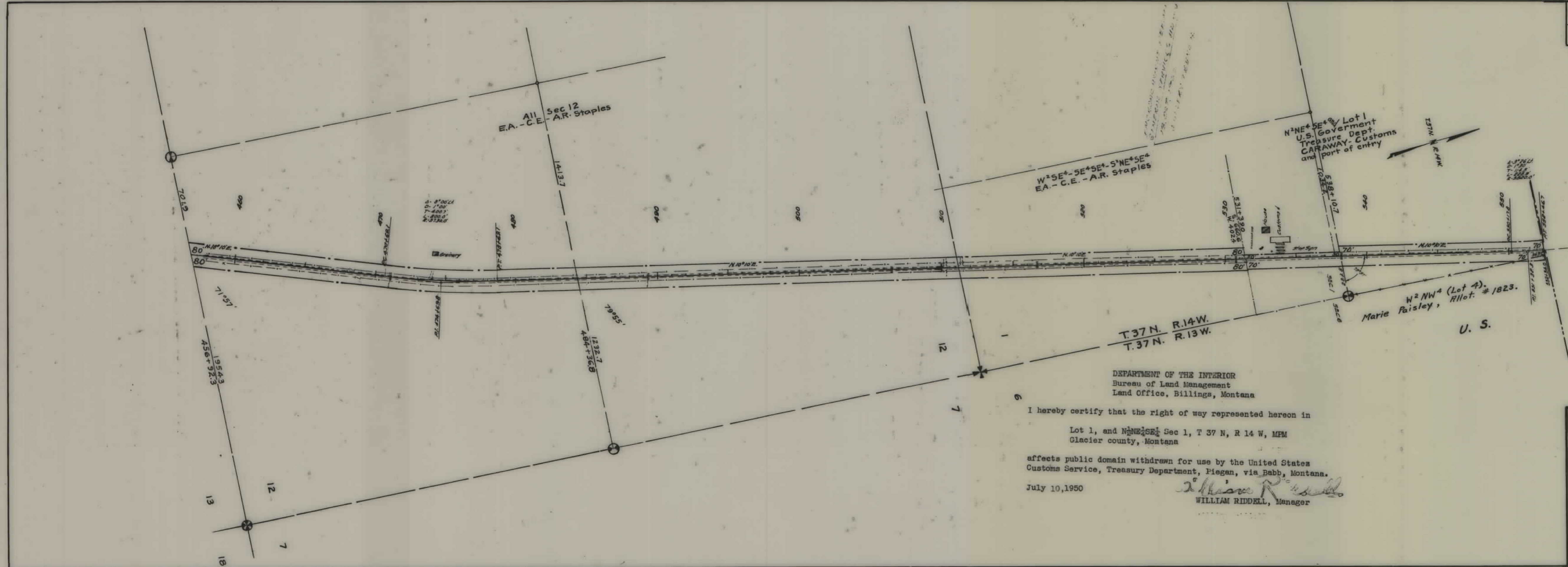
FED. ROAD DIST. NO.	STATE	FED. AID PROJ. NO.	STATE R/W No.	SHEET No.	TOTAL SHEETS
1	MONT.	F-208 (2)		3	5



STATE OF MONTANA
STATE HIGHWAY COMMISSION
 PLAT SHOWING LAND
 REQUIRED FOR RIGHT OF WAY
 GLACIER COUNTY

SCALE 1" = 400' MAP COMPLETED May 5, 1950.
 DESCRIPTIONS WRITTEN BY M.R.C. DATE 5-6-50
 DESCRIPTIONS CHECKED BY EOP DATE 5-8-50
 APPROVED BY _____ PLANS DEPT.
 APPROVED BY _____ R/W ENGINEER

FED. ROAD DIST. NO.	STATE	FED. AID PROJ. NO.	STATE R/W No.	SHEET NO.	TOTAL SHEETS
1	MONT.	F208 (2)		5	5



DEPARTMENT OF THE INTERIOR
 Bureau of Land Management
 Land Office, Billings, Montana

I hereby certify that the right of way represented hereon in
 Lot 1, and ~~N1/2~~ Sec 1, T 37 N, R 14 W, MPM
 Glacier county, Montana

affects public domain withdrawn for use by the United States
 Customs Service, Treasury Department, Piegan, via Babb, Montana.

July 10, 1950

William Riddell
 WILLIAM RIDDELL, Manager

STATE OF MONTANA
 STATE HIGHWAY COMMISSION
 PLAT SHOWING LAND
 REQUIRED FOR RIGHT OF WAY
 GLACIER COUNTY

SCALE 1" = 400' MAP COMPLETED May 5 1950

DESCRIPTIONS WRITTEN BY EOP DATE 5-8-50

DESCRIPTIONS CHECKED BY JAP DATE 5-8-50

APPROVED BY _____ PLANS DEPT.

APPROVED BY _____ R/W ENGINEER