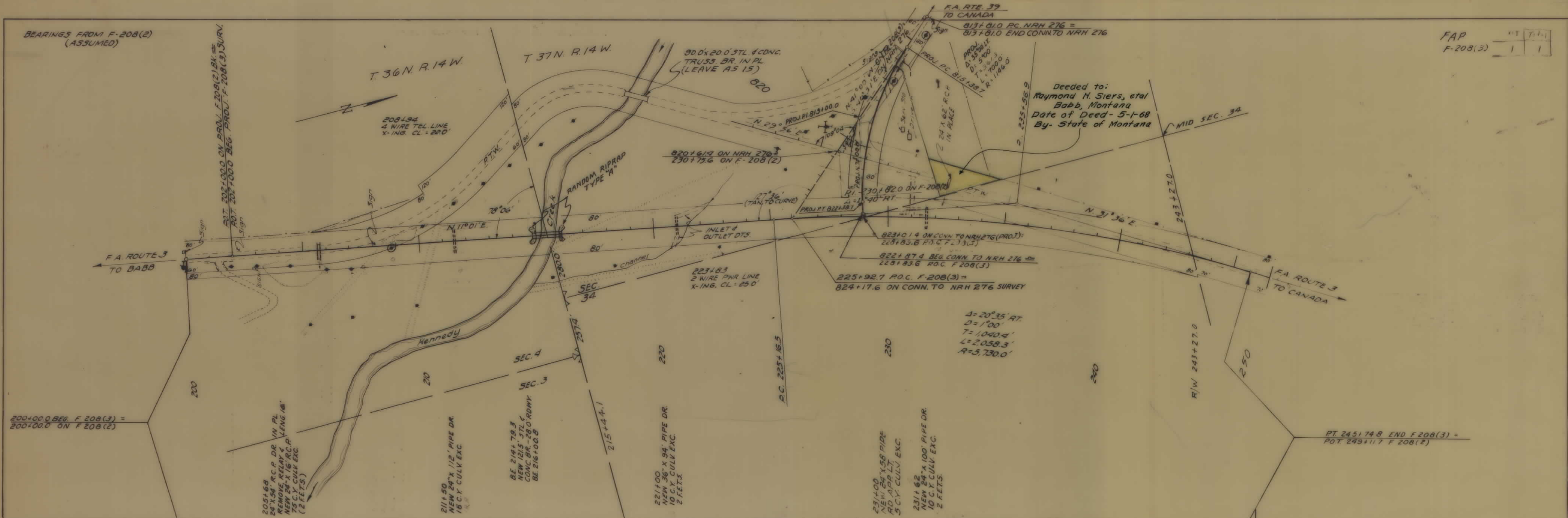


PLANS  
NOT  
TO  
SCALE



BEARINGS FROM F-208(2)  
(ASSUMED)

FAP  
F-208(3)



Deeded to:  
Raymond H. Siers, et al  
Babb, Montana  
Date of Deed - 5-1-68  
By - State of Montana

$\Delta = 20^{\circ}35' RT.$   
 $D = 1^{\circ}00'$   
 $T = 1,040.4'$   
 $L = 2,058.3'$   
 $R = 5,730.0'$

PT. 245+74.8 END F 208(3) =  
POT. 249+11.7 F 208(2)

205+68  
NEW 24" X 58" R.C.P. DR. IN PL.  
REMOVE RELAY & LENG. 18'  
NEW 24" X 16" R.C.P.  
75' C.Y. CULV. EXC.  
(2 FEET)

211+50  
NEW 24" X 112" PIPE DR.  
15 C.Y. CULV. EXC.

BE. 214+79.3  
NEW 1215' STL. &  
CONC. BR. - 28' RDWY.  
BE. 216+00.8

221+00  
NEW 36" X 94" PIPE DR.  
10 C.Y. CULV. EXC.  
2 FEET

231+00  
NEW 24" X 58" PIPE  
RD. APP. LT.  
5 C.Y. CULV. EXC.

231+62  
NEW 24" X 100" PIPE DR.  
10 C.Y. CULV. EXC.  
2 FEET

P.C. 225+16.5

R/W 243+27.0

R 50

SEC. 4

SEC. 3

SEC. 34

T. 36 N. R. 14 W.

T. 37 N. R. 14 W.



208+94  
4 WIRE TEL. LINE  
X-ING. CL. = 220'

90' X 20.0' STL. & CONC.  
TRUSS BR. IN PL.  
(LEAVE AS IS)

820+61.9 ON NRH 276 =  
230+77.6 ON F-208(2)

823+01.4 ON CONN. TO NRH 276 (PROJ):  
228+83.6 P.O.C. F-208(3)

822+87.4 BEG. CONN. TO NRH 276 =  
228+83.6 P.O.C. F-208(3)

225+92.7 P.O.C. F-208(3) =  
824+17.6 ON CONN. TO NRH 276 SURVEY

F.A. RTE. 39  
TO CANADA  
813+81.0 P.C. NRH 276 =  
813+81.0 END CONN. TO NRH 276

PROJ. P.C. 815+38.7  
D.D. 5+00  
L. 700.0  
R. 1146.0

2 24" X 62" R.C.P.  
IN PLACE

PROJ. P.T. 822+38.1

823+01.4 ON CONN. TO NRH 276 (PROJ):  
228+83.6 P.O.C. F-208(3)

822+87.4 BEG. CONN. TO NRH 276 =  
228+83.6 P.O.C. F-208(3)

225+92.7 P.O.C. F-208(3) =  
824+17.6 ON CONN. TO NRH 276 SURVEY

$\Delta = 20^{\circ}35' RT.$   
 $D = 1^{\circ}00'$   
 $T = 1,040.4'$   
 $L = 2,058.3'$   
 $R = 5,730.0'$

PT. 245+74.8 END F 208(3) =  
POT. 249+11.7 F 208(2)