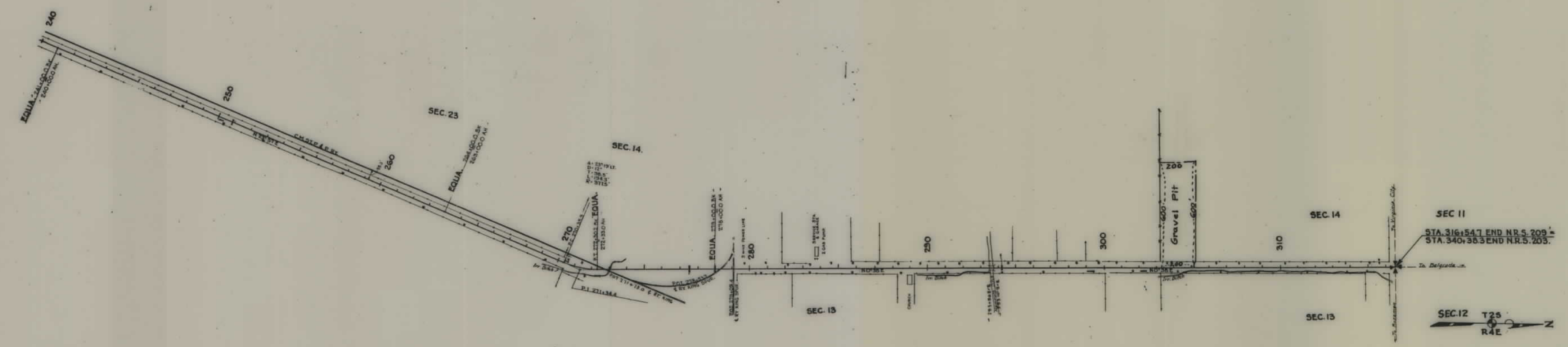


PLANS
NOT
TO
SCALE

FED. ROAD DIST. NO.	STATE	FED. AID PROJ. NO.	R/W No.	SHEET NO.	TOTAL SHEETS
8	MONT.	N.R.S. 209		1	1



STATE OF MONTANA
STATE HIGHWAY COMMISSION
 PLAT SHOWING LAND
 REQUIRED FOR RIGHT OF WAY
 GALLATIN COUNTY

SCALE 1" = 400' MAP COMPLETED July 1952
 DESCRIPTIONS WRITTEN BY _____ DATE _____
 DESCRIPTIONS CHECKED BY _____ DATE _____
 APPROVED BY _____ R/W ENGINEER