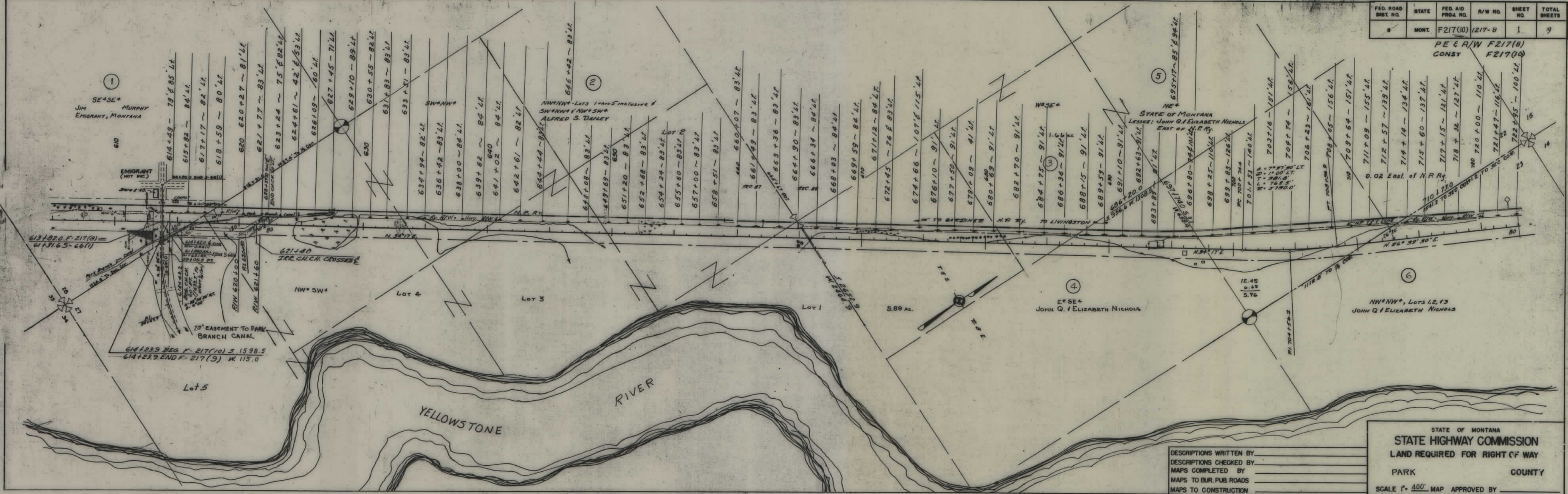


PLANS  
NOT  
TO  
SCALE

FED. ROAD DIST. NO.	STATE	FED. AID PROJ. NO.	R/W NO.	SHEET NO.	TOTAL SHEETS
8	MONT.	F217(10)	1217-8	1	9

PE & R/W F217(8)  
CONST F217(10)

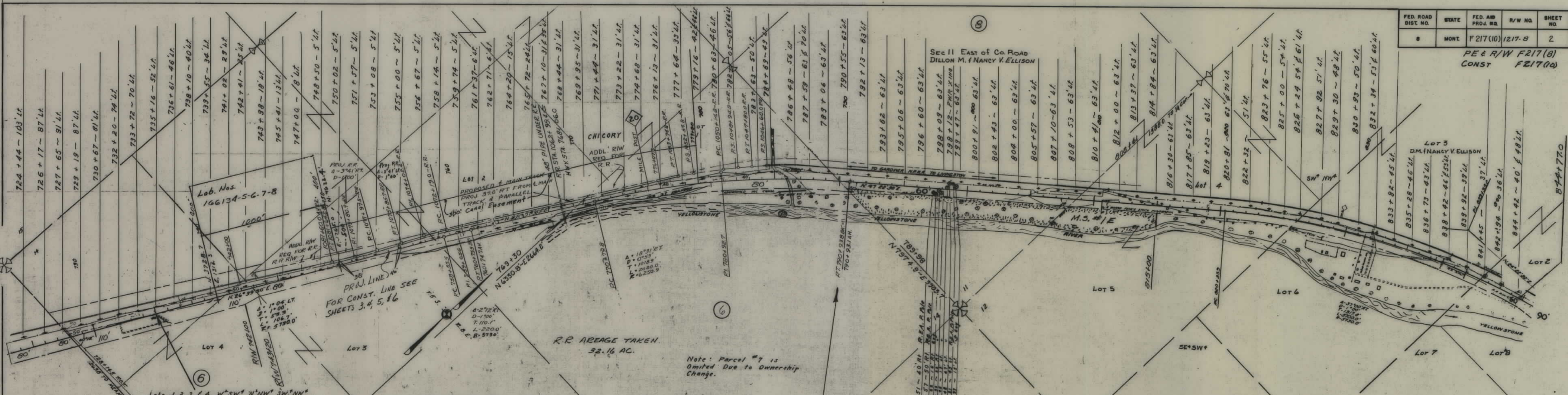


DESCRIPTIONS WRITTEN BY \_\_\_\_\_  
 DESCRIPTIONS CHECKED BY \_\_\_\_\_  
 MAPS COMPLETED BY \_\_\_\_\_  
 MAPS TO BUR. PUB. ROADS \_\_\_\_\_  
 MAPS TO CONSTRUCTION \_\_\_\_\_

STATE OF MONTANA  
 STATE HIGHWAY COMMISSION  
 LAND REQUIRED FOR RIGHT OF WAY  
 PARK COUNTY  
 SCALE 1" = 400' MAP APPROVED BY \_\_\_\_\_

FED. ROAD DIST. NO.	STATE	FED. AID PROJ. NO.	R/W NO.	SHEET NO.	TOTAL SHEETS
8	MONT.	F 217(10)	1217-B	2	9

PE & R/W F217(8)  
CONST F217(10)



Lab. Nos.  
166134-5-6-7-8

PROJ. LINE SEE  
FOR CONST. LINE SEE  
SHEETS 3, 4, 5, 6

RR AREA TAKEN  
32.16 AC.

Note: Parcel #7 is  
Omitted Due to Ownership  
Change.

STA. 735+00 TO 790+99.1  
SEE SHEETS 3, 4, 5 & 6 FOR  
DETAILS OF LINE CHANGE &  
R.R. LINE CHANGE. THIS MAP  
IS VOID BETWEEN THESE STATIONS.

Lots 1, 2, 3 & 4, W<sup>2</sup>SW<sup>4</sup>, N<sup>1</sup>NW<sup>4</sup>, SW<sup>1</sup>NW<sup>4</sup>  
JOHN Q. & ELIZABETH NICHOLS

Materials Site Rte. Sta.  
736+00 to 765+00  
All that land in W<sup>1</sup>2 Sec 14  
lying on the South Easterly  
Side of the South Easterly  
Hwy R/W & on the  
Westerly side of  
the Irrigation  
Ditch

POLES TO BE MOVED			
STATION	NUM. POLES	REMARKS	
797+51	1		
797+57	1		
777+82 & 790	2	INCL. TWO GUYS	
798+45 & 48	2	" " "	
798+81	1		
798+97	1	INCL. ONE GUY	
TOTAL	4	4	

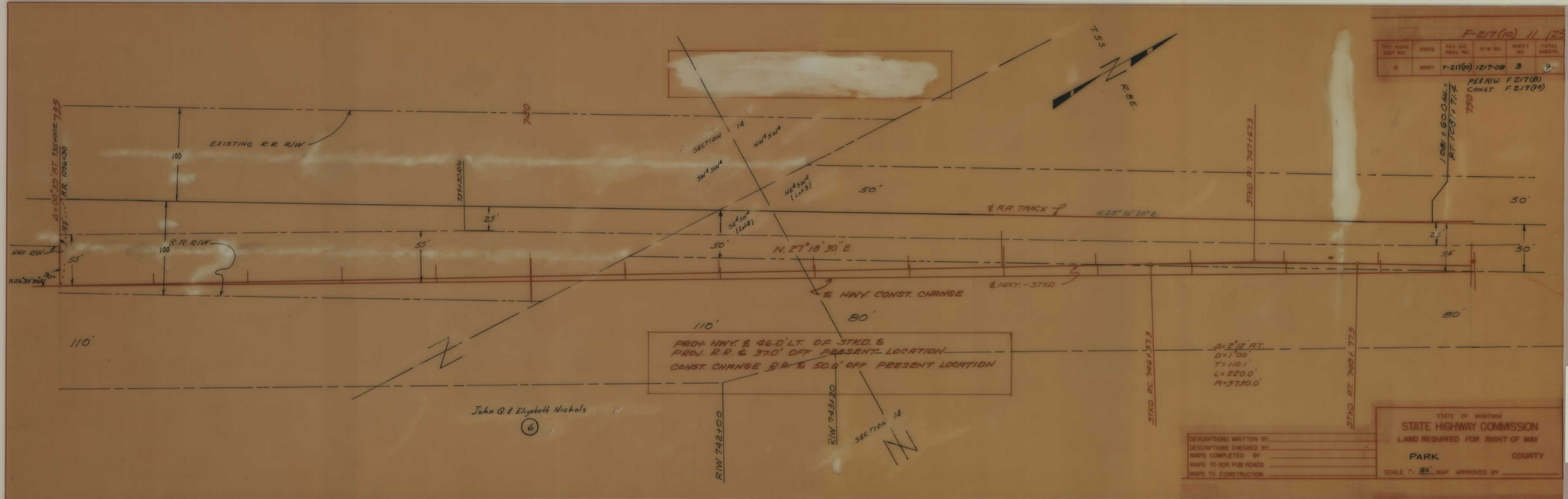
DESCRIPTIONS WRITTEN BY \_\_\_\_\_  
DESCRIPTIONS CHECKED BY \_\_\_\_\_  
MAPS COMPLETED BY \_\_\_\_\_  
MAPS TO BUR. PUB. ROADS \_\_\_\_\_  
MAPS TO CONSTRUCTION \_\_\_\_\_

STATE OF MONTANA  
STATE HIGHWAY COMMISSION  
LAND REQUIRED FOR RIGHT OF WAY  
PARK COUNTY  
SCALE 1" = 400' MAP APPROVED BY \_\_\_\_\_

F-217(10) 11 123

FED. ROAD DIST. NO.	STATE	FED. AID PROJ. NO.	R/W NO.	SHEET NO.	TOTAL SHEETS
8	MONT.	F-217(10)	1217-08	3	9

PER R/W F 217(8)  
CONST F 217(10)



John Q. & Elizabeth Nichols

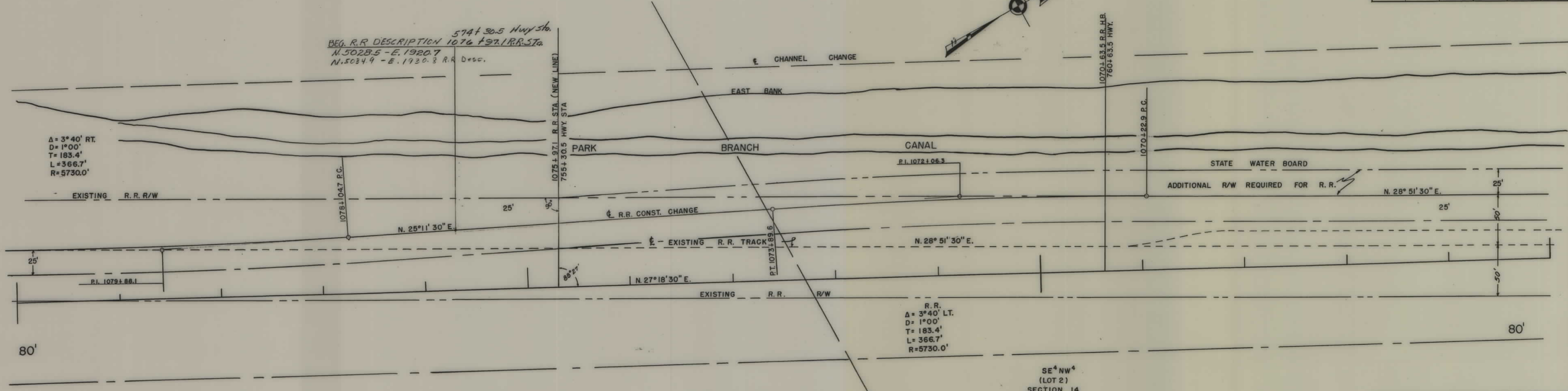
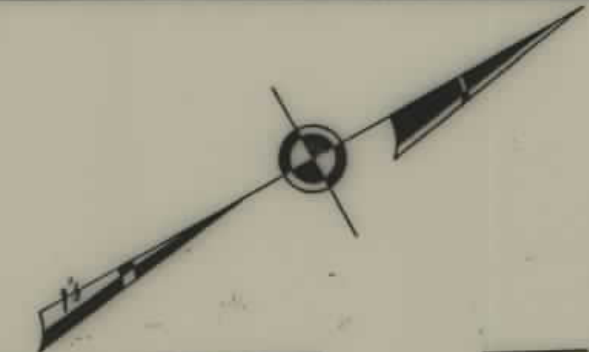
6

DESCRIPTIONS WRITTEN BY \_\_\_\_\_  
 DESCRIPTIONS CHECKED BY \_\_\_\_\_  
 MAPS COMPLETED BY \_\_\_\_\_  
 MAPS TO BUR PUB. ROADS \_\_\_\_\_  
 MAPS TO CONSTRUCTION \_\_\_\_\_

STATE OF MONTANA  
 STATE HIGHWAY COMMISSION  
 LAND REQUIRED FOR RIGHT OF WAY  
 PARK COUNTY  
 SCALE 1" = 50' MAP APPROVED BY \_\_\_\_\_

FED. ROAD DIST. NO.	STATE	FED. AID PROJ. NO.	R/W NO.	SHEET NO.	TOTAL SHEETS
8	MONT.	F 217(10)	1217-08	4	9

574+30.5 Hwy Sta.  
 BEG. R.R. DESCRIPTION 1076+97.1 R.R. STA.  
 N. 5028.5 - E. 1920.7  
 N. 5034.9 - E. 1930.8 R.R. Desc.



6  
 JOHN Q. & ELIZABETH NICHOLS

NE<sup>4</sup>SW<sup>4</sup>  
 (LOT 3)  
 SEC. 14

SE<sup>4</sup>NW<sup>4</sup>  
 (LOT 2)  
 SECTION 14

MAPS MADE \_\_\_\_\_  
 MAPS REVISED \_\_\_\_\_  
 MAPS TO BUR. PUB. ROADS \_\_\_\_\_  
 MAPS COMPLETED \_\_\_\_\_

STATE OF MONTANA  
 STATE HIGHWAY COMMISSION  
 LAND REQUIRED FOR RIGHT OF WAY  
 COUNTY \_\_\_\_\_  
 SCALE 1" = \_\_\_\_\_ MAP APPROVED BY \_\_\_\_\_

DESCRIPTIONS WRITTEN BY \_\_\_\_\_  
 DESCRIPTIONS CHECKED BY \_\_\_\_\_  
 MAPS COMPLETED BY \_\_\_\_\_  
 MAPS TO BUR PUB ROADS \_\_\_\_\_  
 MAPS TO CONSTRUCTION \_\_\_\_\_

STATE OF MONTANA  
 STATE HIGHWAY COMMISSION  
 LAND REQUIRED FOR RIGHT OF WAY

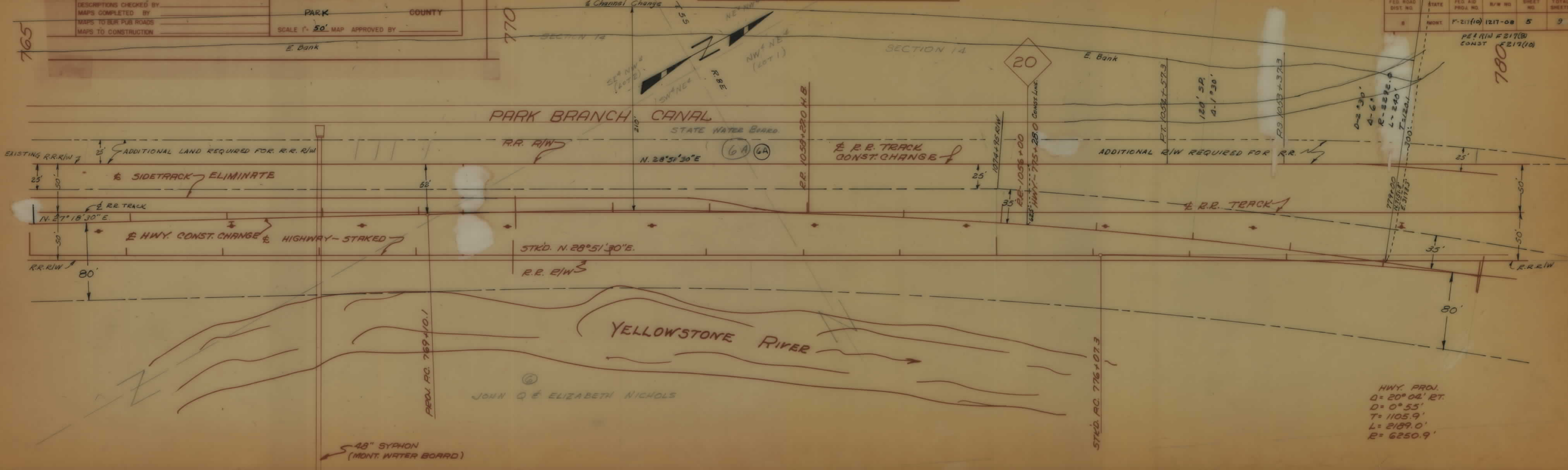
PARK COUNTY  
 SCALE 1" = 50' MAP APPROVED BY \_\_\_\_\_

FOR PROJ. HWY. & R.R. E, GRADES,  
 & QUANTITIES SEE SHEETS NOS 9 & 10

FED. ROAD DIST. NO.	STATE	FED. AID PROJ. NO.	B/W NO.	SHEET NO.	TOTAL SHEETS
8	MONT.	F-217(10)	1217-08	5	9

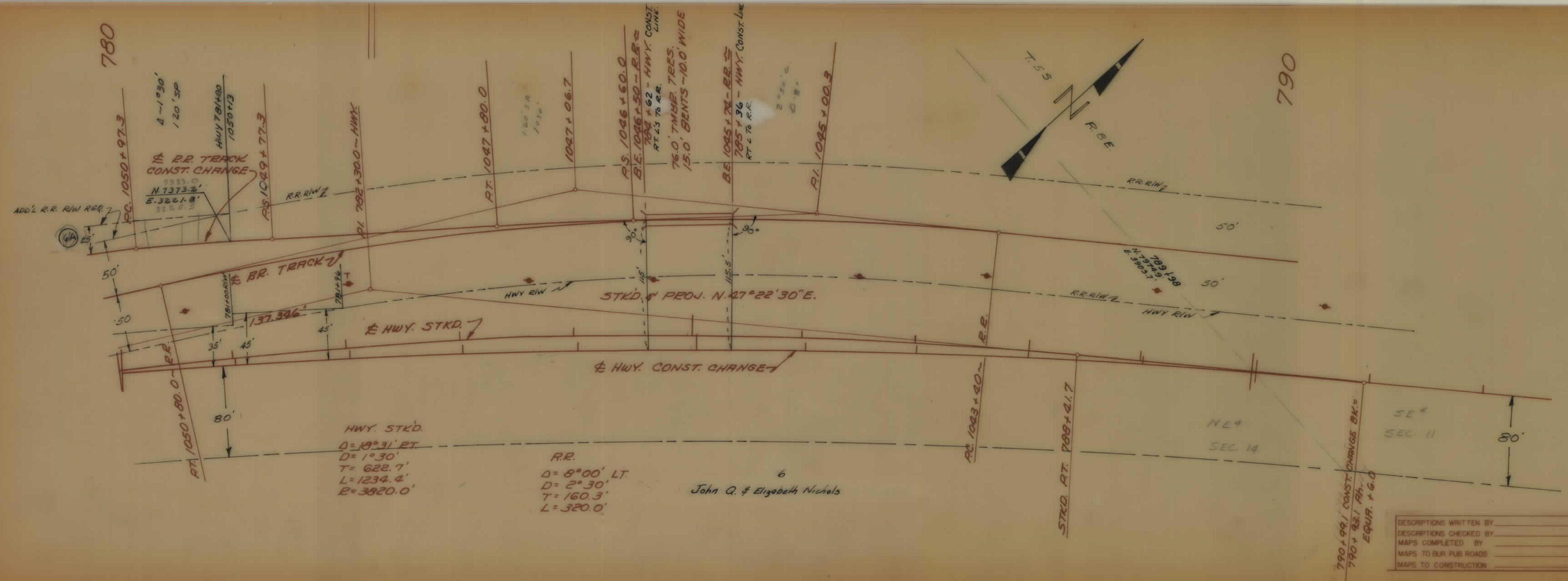
E-217(10) 12 12

PEL R/W F217(B)  
 CONST F217(10)



FED. ROAD DIST. NO.	STATE	FED. AID PROJ. NO.	R/W NO.	SHEET NO.	TOTAL SHEETS
8	MONT.	F-217(10)	1217-08	6	9

PE & RIW F217 (8)  
CONST F217(10)

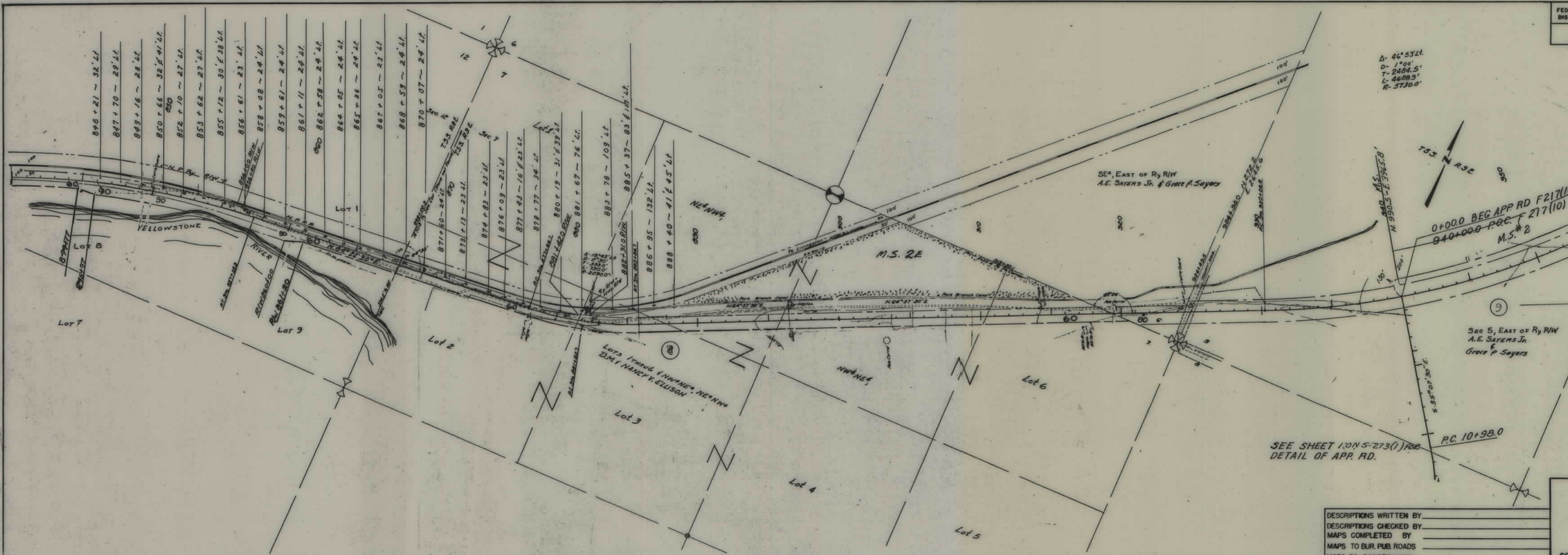


F 217(10) SHT 6 OF 9

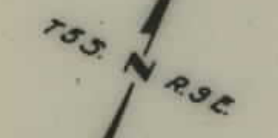
5

FED. ROAD DIST. NO.	STATE	FED. AID PROJ. NO.	R/W NO.	SHEET NO.	TOTAL SHEETS
8	MONT.	F217(10)	1217-B	7	9

PE & R/W F217(10)  
CONST F217(10)



Δ-46°53'24"  
D-1°00'  
T-2484.5'  
L-46883'  
R-5730.0'



0+00.0 BEG APP RD F217(10)  
940+00.0 P.O.C. F217(10)  
M.S. 2

Sec 5, EAST OF Ry R/W  
A.E. Sayers Jr.  
&  
Grace P. Sayers

SEE SHEET 1 ON S-273(1) FOR  
DETAIL OF APP. RD.

P.C. 10+98.0

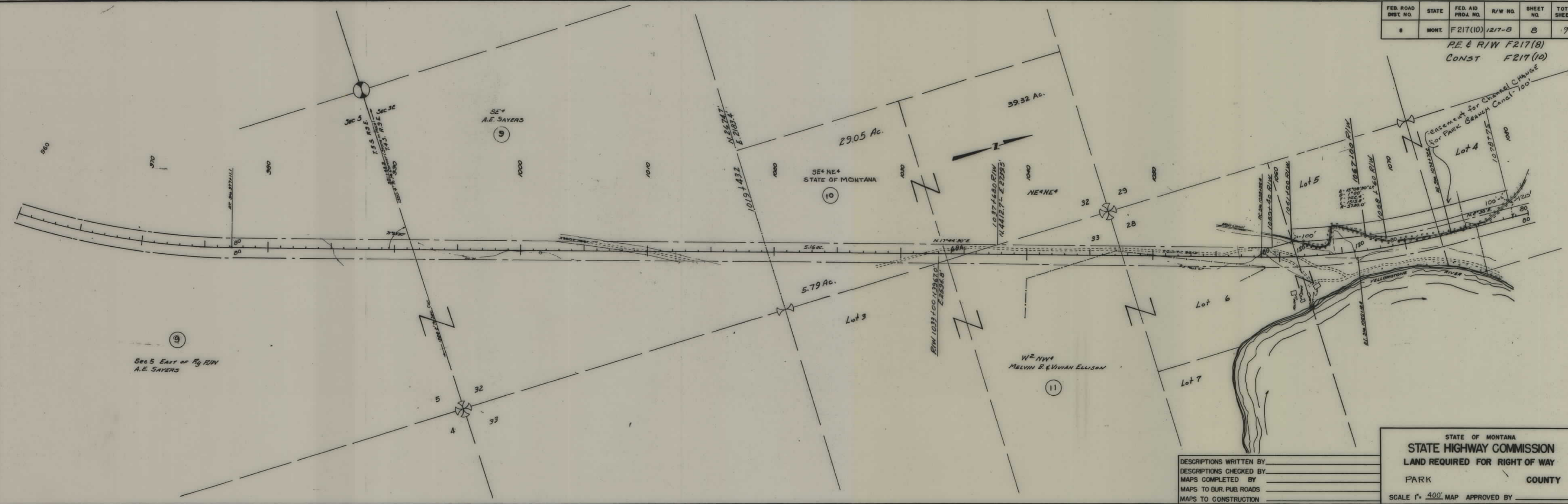
DESCRIPTIONS WRITTEN BY \_\_\_\_\_  
DESCRIPTIONS CHECKED BY \_\_\_\_\_  
MAPS COMPLETED BY \_\_\_\_\_  
MAPS TO BUR. PUB. ROADS \_\_\_\_\_  
MAPS TO CONSTRUCTION \_\_\_\_\_

STATE OF MONTANA  
STATE HIGHWAY COMMISSION  
LAND REQUIRED FOR RIGHT OF WAY  
  
PARK COUNTY  
SCALE 1" = 400' MAP APPROVED BY \_\_\_\_\_



FED. ROAD DIST. NO.	STATE	FED. AID PROJ. NO.	R/W NO.	SHEET NO.	TOTAL SHEETS
8	MONT.	F217(10)	1217-8	8	9

P.E. & R/W F217(8)  
CONST F217(10)

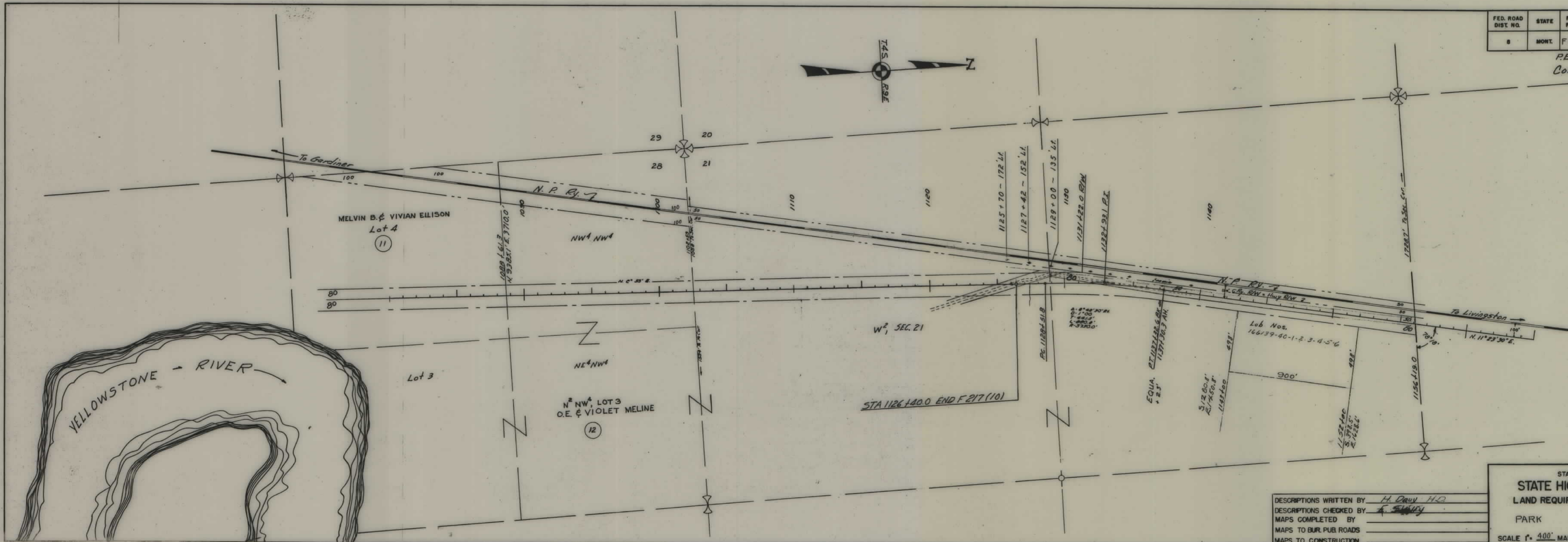
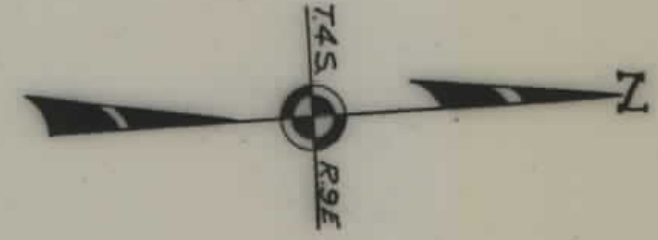


DESCRIPTIONS WRITTEN BY \_\_\_\_\_  
 DESCRIPTIONS CHECKED BY \_\_\_\_\_  
 MAPS COMPLETED BY \_\_\_\_\_  
 MAPS TO BUR. PUB. ROADS \_\_\_\_\_  
 MAPS TO CONSTRUCTION \_\_\_\_\_

STATE OF MONTANA  
 STATE HIGHWAY COMMISSION  
 LAND REQUIRED FOR RIGHT OF WAY  
 PARK COUNTY  
 SCALE 1" = 400' MAP APPROVED BY \_\_\_\_\_

FED. ROAD DIST. NO.	STATE	FED. AID PROJ. NO.	R/W NO.	SHEET NO.	TOTAL SHEETS
8	MONT.	F217(10)	1217-B	9	9

PE & R/W F217(8)  
CONST. F217(10)



DESCRIPTIONS WRITTEN BY H. D. H. D.  
 DESCRIPTIONS CHECKED BY [Signature]  
 MAPS COMPLETED BY \_\_\_\_\_  
 MAPS TO BUR. PUB. ROADS \_\_\_\_\_  
 MAPS TO CONSTRUCTION \_\_\_\_\_

STATE OF MONTANA  
**STATE HIGHWAY COMMISSION**  
 LAND REQUIRED FOR RIGHT OF WAY  
 PARK COUNTY  
 SCALE 1" = 400' MAP APPROVED BY \_\_\_\_\_