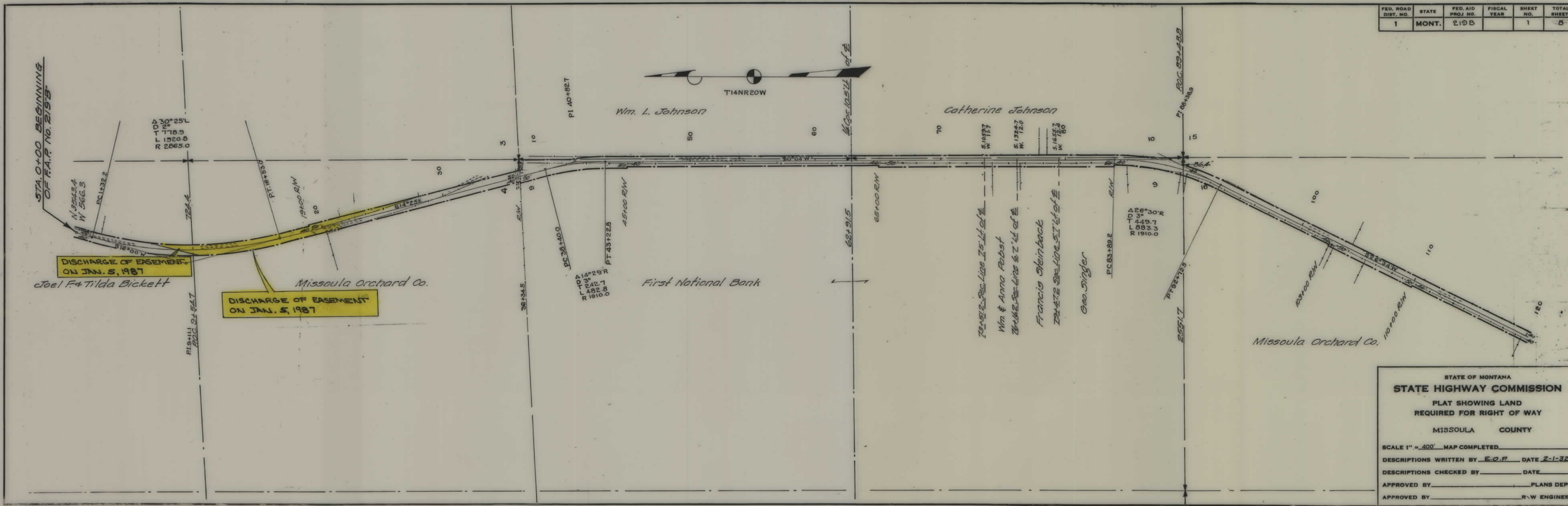


PLANS  
NOT  
TO  
SCALE

FED. ROAD DIST. NO.	STATE	FED. AID PROJ. NO.	FISCAL YEAR	SHEET NO.	TOTAL SHEETS
1	MONT.	219B		1	8

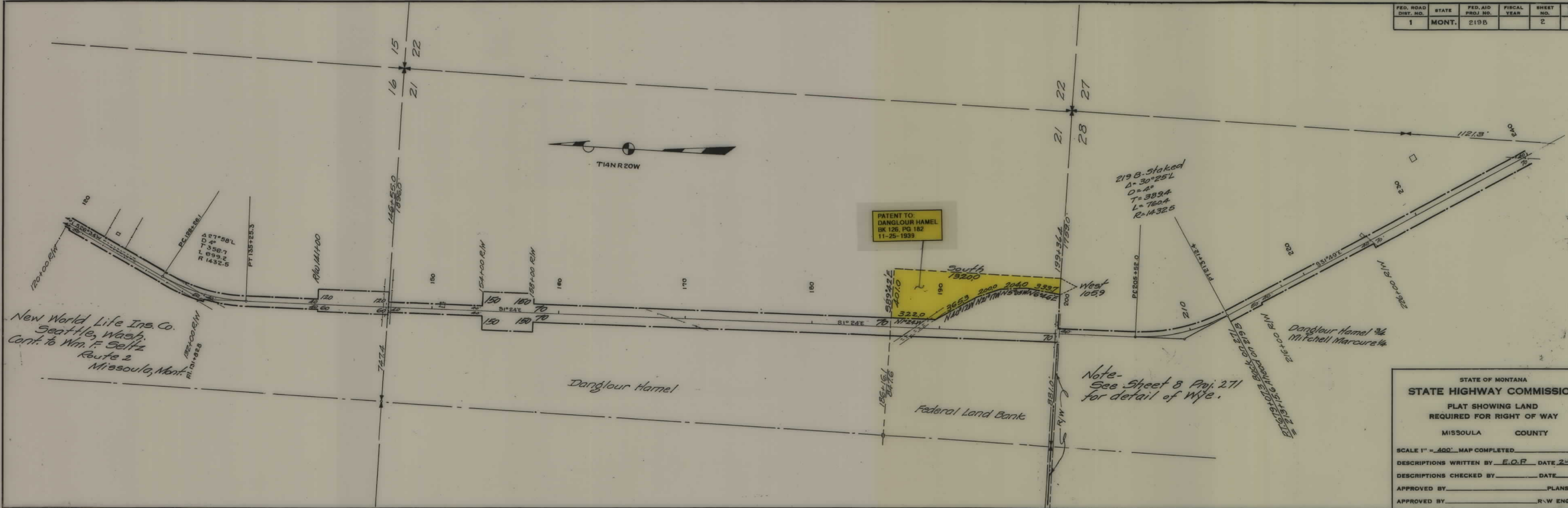


STATE OF MONTANA  
**STATE HIGHWAY COMMISSION**  
 PLAT SHOWING LAND  
 REQUIRED FOR RIGHT OF WAY  
 MISSOULA COUNTY

SCALE 1" = 400' MAP COMPLETED \_\_\_\_\_  
 DESCRIPTIONS WRITTEN BY E.O.P. DATE 2-1-32  
 DESCRIPTIONS CHECKED BY \_\_\_\_\_ DATE \_\_\_\_\_  
 APPROVED BY \_\_\_\_\_ PLANS DEPT.  
 APPROVED BY \_\_\_\_\_ R.W. ENGINEER

*R/W inked & checked on plans 5/17/3.*

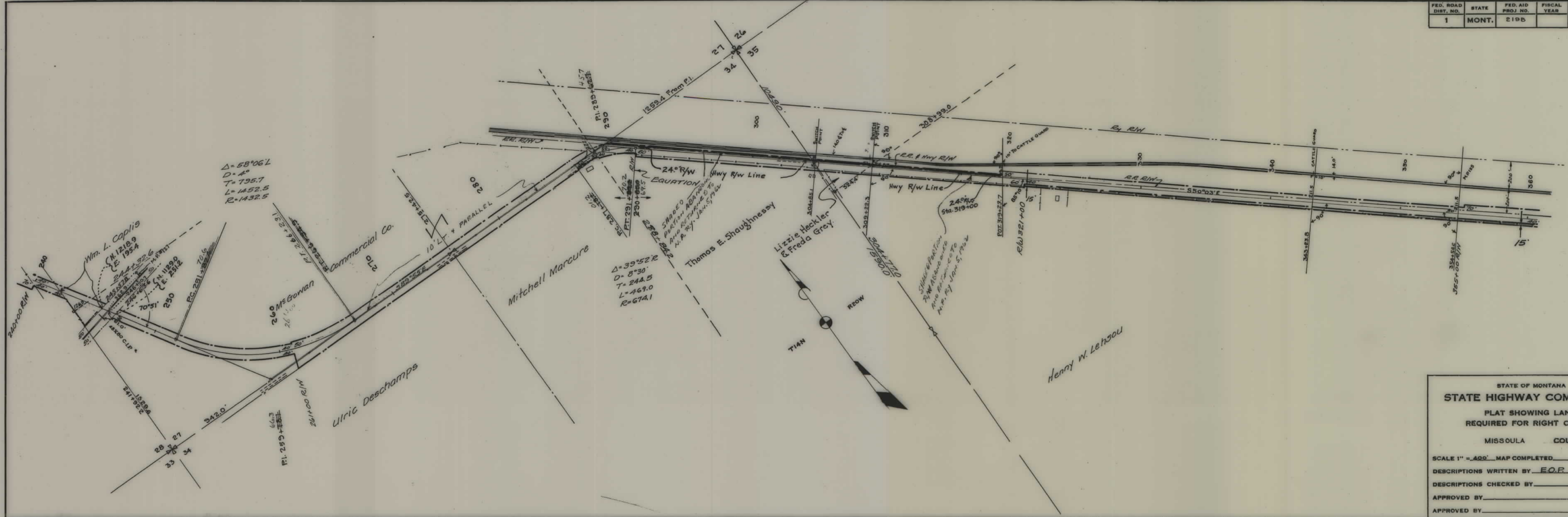
FED. ROAD DIST. NO.	STATE	FED. AID PROJ. NO.	FISCAL YEAR	SHEET NO.	TOTAL SHEETS
1	MONT.	219B		2	3



STATE OF MONTANA  
**STATE HIGHWAY COMMISSION**  
 PLAT SHOWING LAND  
 REQUIRED FOR RIGHT OF WAY  
 MISSOULA COUNTY

SCALE 1" = 400' MAP COMPLETED \_\_\_\_\_  
 DESCRIPTIONS WRITTEN BY E.O.P. DATE 2-2-32  
 DESCRIPTIONS CHECKED BY \_\_\_\_\_ DATE \_\_\_\_\_  
 APPROVED BY \_\_\_\_\_ PLANS DEPT.  
 APPROVED BY \_\_\_\_\_ R.W. ENGINEER

FED. ROAD DIST. NO.	STATE	FED. AID PROJ. NO.	FISCAL YEAR	SHEET NO.	TOTAL SHEETS
1	MONT.	2195		3	8



STATE OF MONTANA  
**STATE HIGHWAY COMMISSION**  
 PLAT SHOWING LAND  
 REQUIRED FOR RIGHT OF WAY  
 MISSOULA COUNTY

SCALE 1" = 400' MAP COMPLETED \_\_\_\_\_

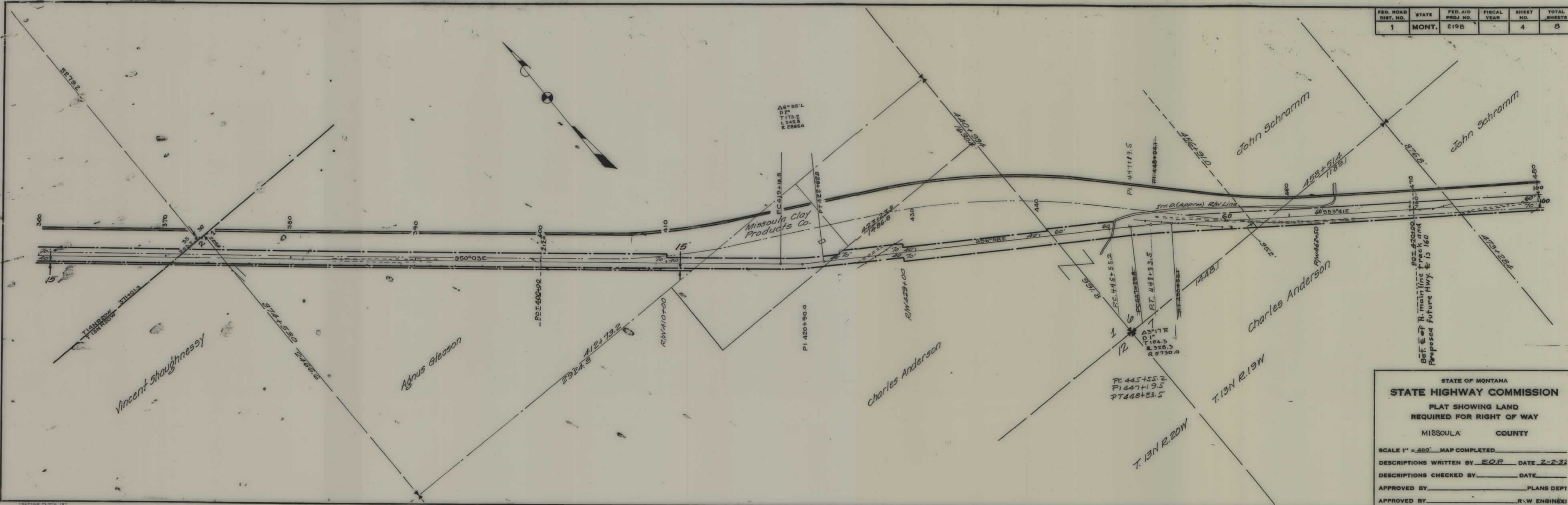
DESCRIPTIONS WRITTEN BY E.O.P. DATE 2-2-32

DESCRIPTIONS CHECKED BY \_\_\_\_\_ DATE \_\_\_\_\_

APPROVED BY \_\_\_\_\_ PLANS DEPT.

APPROVED BY \_\_\_\_\_ R-W ENGINEER

FED. ROAD DIST. NO.	STATE	FED. AID PROJ. NO.	FISCAL YEAR	SHEET NO.	TOTAL SHEETS
1	MONT.	219B		4	8



STATE OF MONTANA  
**STATE HIGHWAY COMMISSION**  
 PLAT SHOWING LAND  
 REQUIRED FOR RIGHT OF WAY  
 MISSOULA COUNTY

SCALE 1" = 400' MAP COMPLETED \_\_\_\_\_

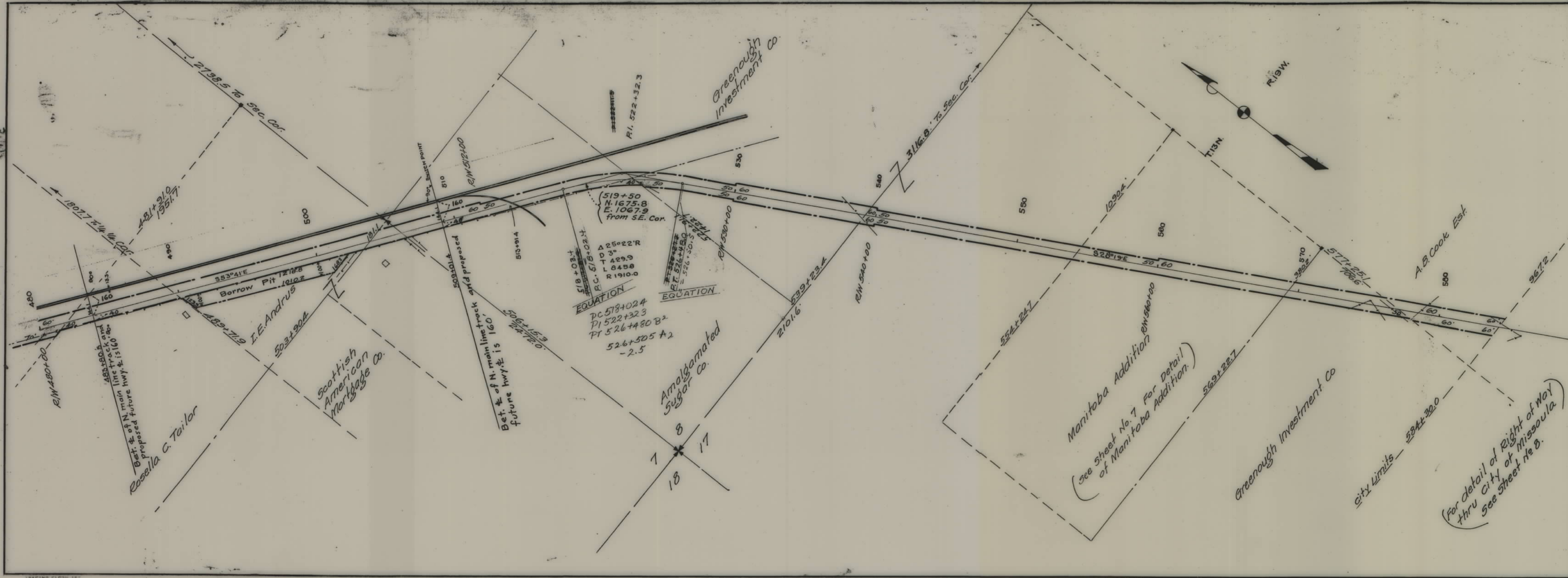
DESCRIPTIONS WRITTEN BY E.O.P. DATE 2-2-33

DESCRIPTIONS CHECKED BY \_\_\_\_\_ DATE \_\_\_\_\_

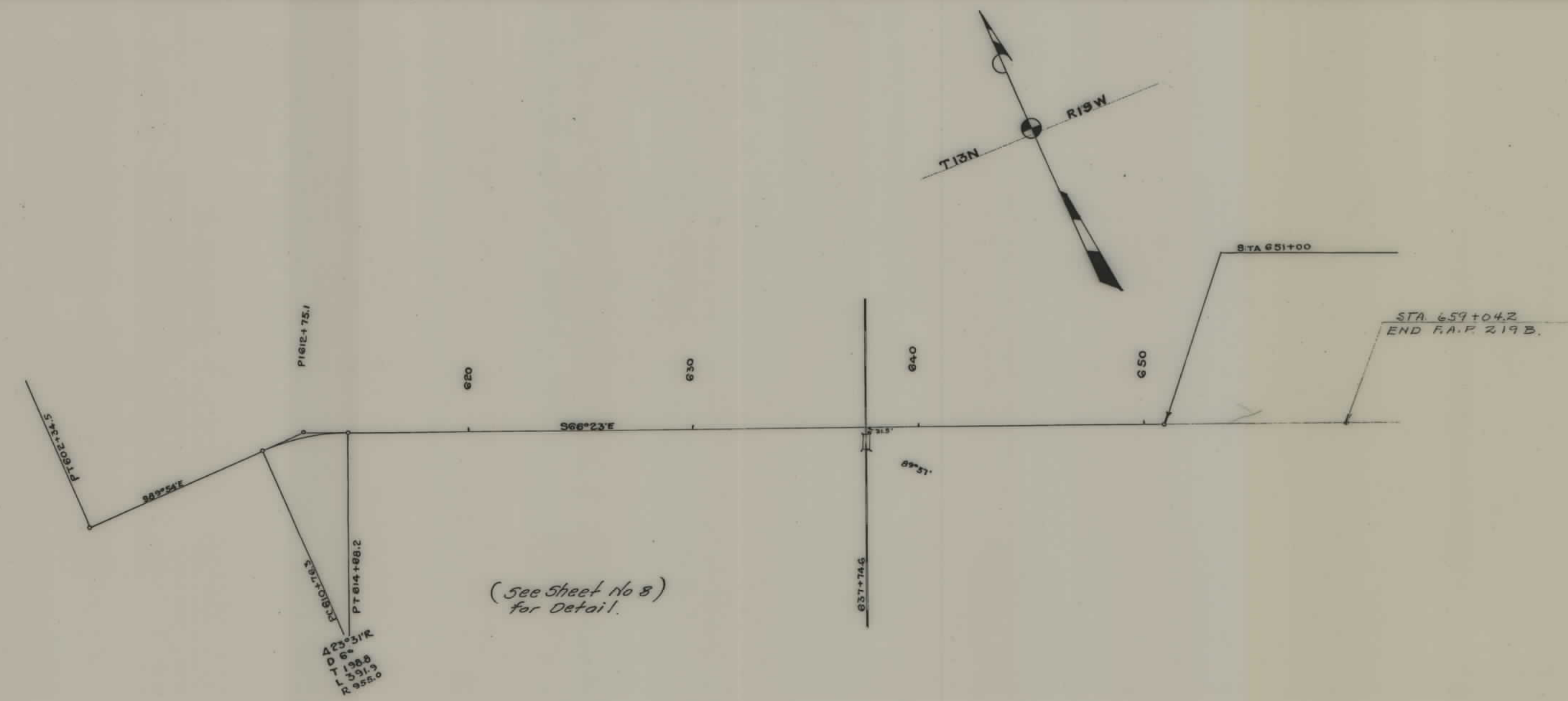
APPROVED BY \_\_\_\_\_ PLANS DEPT

APPROVED BY \_\_\_\_\_ R.W. ENGINEER

FED. ROAD DIST. NO.	STATE	FED. AID PROJ. NO.	FISCAL YEAR	SHEET NO.	TOTAL SHEETS
1	MONT.	219B		5	8



FED. ROAD DIST. NO.	STATE	FED. AID PROJ. NO.	FISCAL YEAR	SHEET NO.	TOTAL SHEETS
1	MONT.	219B		6	8



STATE OF MONTANA  
**STATE HIGHWAY COMMISSION**  
 PLAT SHOWING LAND  
 REQUIRED FOR RIGHT OF WAY  
 MISSOULA COUNTY

SCALE 1" = 400' MAP COMPLETED \_\_\_\_\_  
 DESCRIPTIONS WRITTEN BY \_\_\_\_\_ DATE \_\_\_\_\_  
 DESCRIPTIONS CHECKED BY \_\_\_\_\_ DATE \_\_\_\_\_  
 APPROVED BY \_\_\_\_\_ PLANS DEPT. \_\_\_\_\_  
 APPROVED BY \_\_\_\_\_ R-W ENGINEER \_\_\_\_\_

5

FED. ROAD DIST. NO.	STATE	FED. AID PROJ. NO.	FISCAL YEAR	SHEET NO.	TOTAL SHEETS
1	MONT.	219-B		7	8

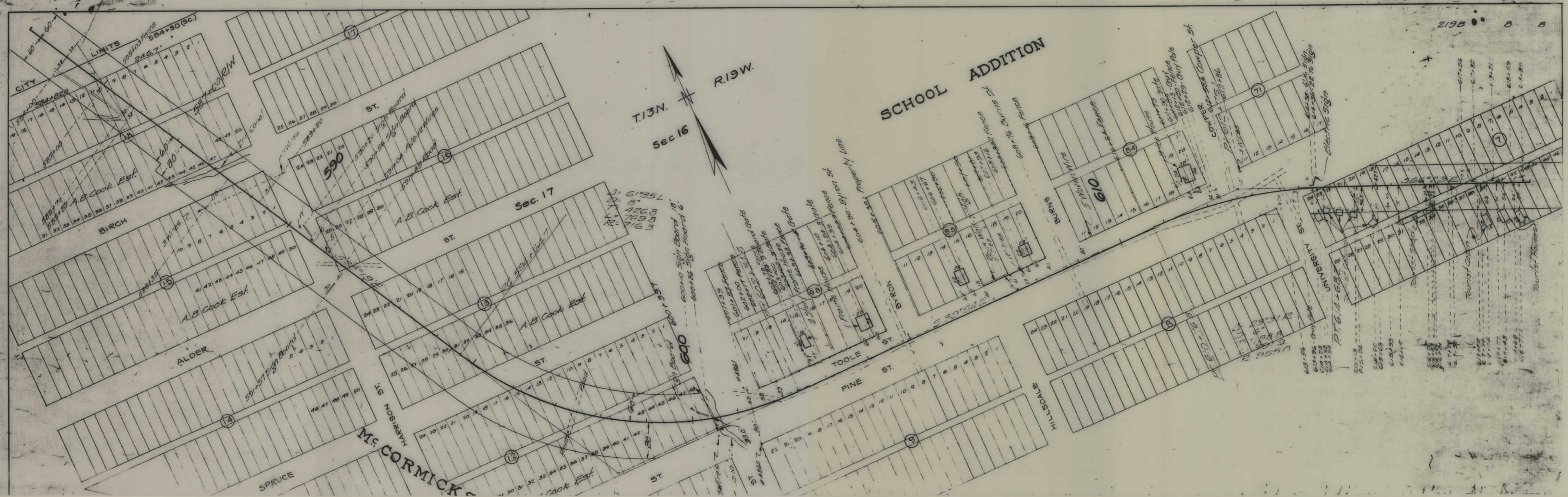


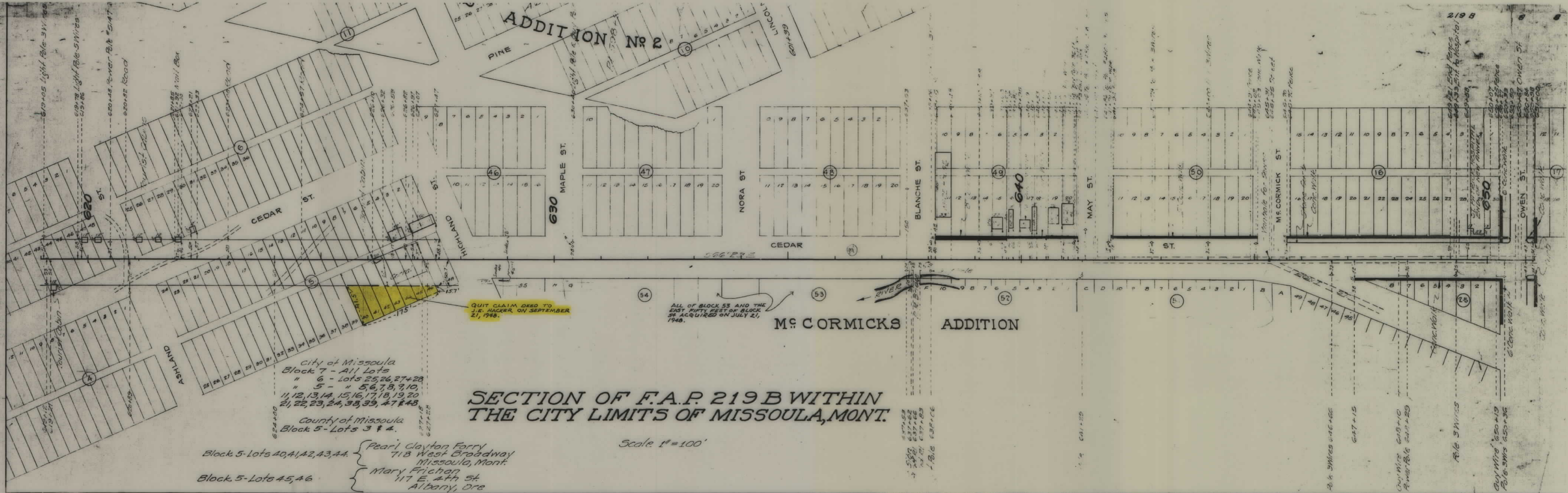
**MANITOBA ADDITION**

BLOCK	LOT	OWNER
3	1-3, 7-10	Greenough Investment Co.
	4-6, 17-20	Leonie G. Demers
	11-16	Mathilda S. Solomon
4	1-20	Greenough Investment Co.
12	1-10	Mathilda S. Solomon
	11-20	Joseph Herman
16	1-20	Mathilda S. Solomon
27	1-10, 14-20	Missoula County
	11-13	Leonie G. Demers

STATE OF MONTANA  
**STATE HIGHWAY COMMISSION**  
 PLAT SHOWING LAND  
 REQUIRED FOR RIGHT OF WAY  
 MISSOULA COUNTY  
 SCALE 1" = 100' MAP COMPLETED 1-29-32  
 DESCRIPTIONS WRITTEN BY E.O.P. DATE 2-4-32  
 DESCRIPTIONS CHECKED BY \_\_\_\_\_ DATE \_\_\_\_\_  
 APPROVED BY \_\_\_\_\_ PLANS DEPT.  
 APPROVED BY \_\_\_\_\_ R.W. ENGINEER







**SECTION OF F.A.P. 219 B WITHIN THE CITY LIMITS OF MISSOULA, MONT.**

Scale 1" = 100'

City of Missoula  
 Block 7 - All Lots  
 " 6 - Lots 25, 26, 27, 28  
 " 5 - " 5, 6, 7, 8, 9, 10,  
 11, 12, 13, 14, 15, 16, 17, 18, 19, 20,  
 21, 22, 23, 24, 38, 39, 47 & 48

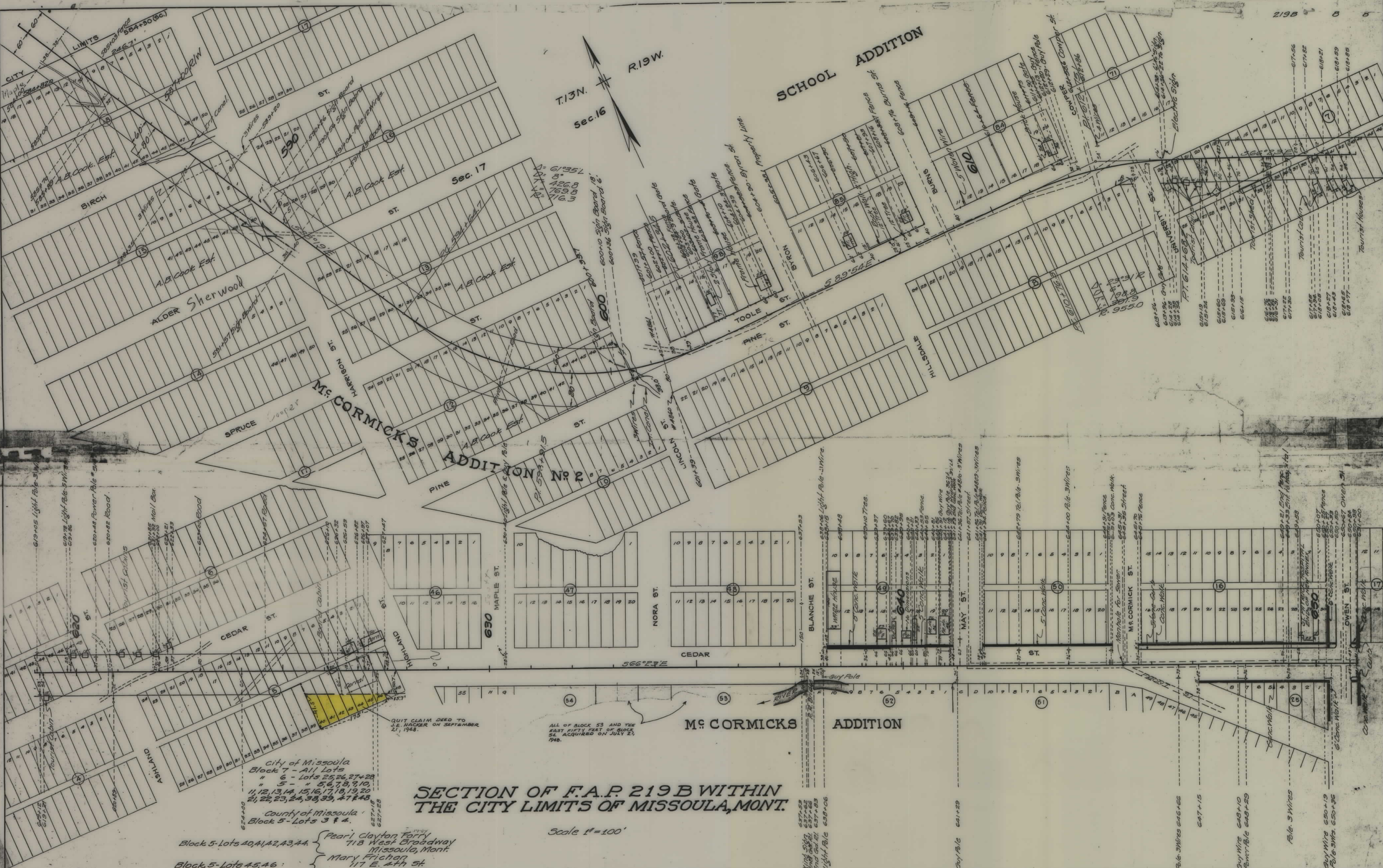
County of Missoula  
 Block 5 - Lots 3 & 4.

Block 5 - Lots 40, 41, 42, 43, 44. { Pearl Clayton Ferry  
 718 West Broadway  
 Missoula, Mont.

Block 5 - Lots 45, 46. { Mary Frichon  
 117 E. 4th St  
 Albany, Ore

QUIT CLAIM DEED TO J.E. HACKER ON SEPTEMBER 21, 1948.

ALL OF BLOCK 53 AND THE EAST FIFTY FEET OF BLOCK 54 ACQUIRED ON JULY 21, 1948.



**SECTION OF F.A.P. 219B WITHIN THE CITY LIMITS OF MISSOULA, MONT.**

Scale 1"=100'

City of Missoula  
Block 7 - All Lots  
" 6 - Lots 25, 26, 27 & 28  
" 5 - Lots 1, 2, 3, 4, 5, 6, 7, 8, 9, 10,  
11, 12, 13, 14, 15, 16, 17, 18, 19, 20,  
21, 22, 23, 24, 25, 26, 27 & 28

County of Missoula  
Block 5 - Lots 3 & 4

Block 5 - Lots 40, 41, 42, 43, 44  
Pearl Clayton Ferry  
713 West Broadway  
Missoula, Mont.

Block 5 - Lots 45, 46  
Mary Frichan  
117 E. 4th St.  
Albany, Ore

QUIT CLAIM DEED TO J.E. HACKER ON SEPTEMBER 21, 1948

ALL OF BLOCK 53 AND THE EAST FIFTY FEET OF BLOCK 52 ACQUIRED ON JULY 21, 1948