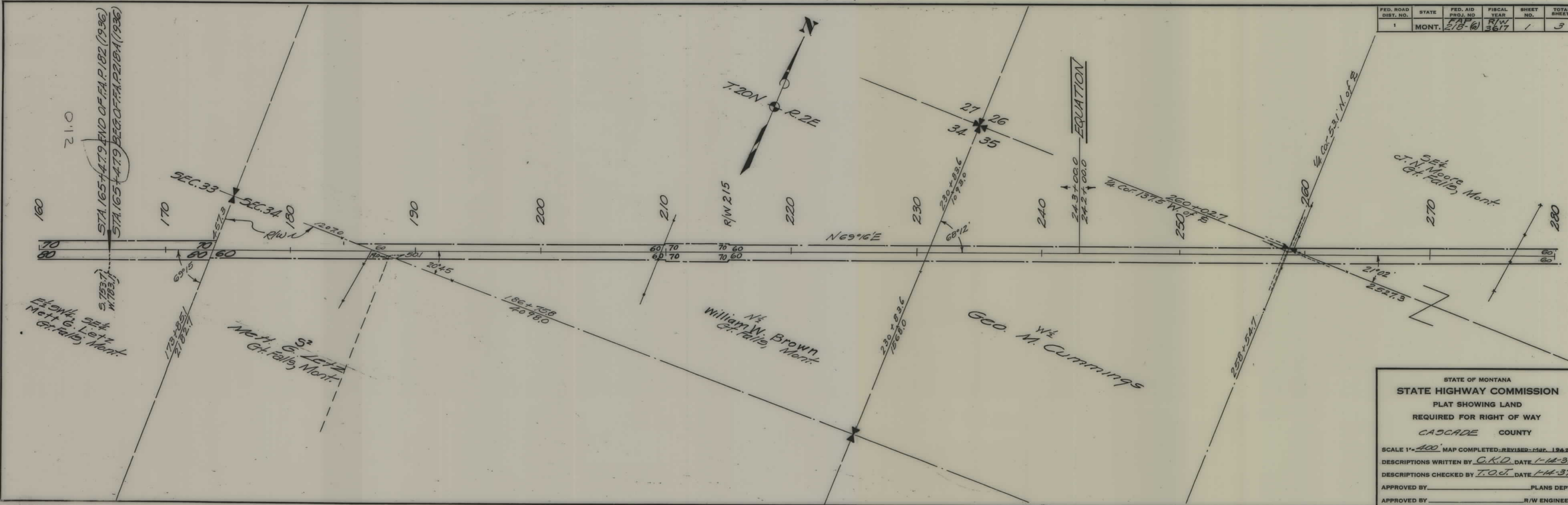


PLANS  
NOT  
TO  
SCALE

FED. ROAD DIST. NO.	STATE	FED. AID PROJ. NO.	FISCAL YEAR	SHEET NO.	TOTAL SHEETS
1	MONT.	FAP 218-6	R/W 3617	1	3



STATE OF MONTANA  
 STATE HIGHWAY COMMISSION  
 PLAT SHOWING LAND  
 REQUIRED FOR RIGHT OF WAY  
 CASCADE COUNTY

SCALE 1" = 400' MAP COMPLETED-REVISED-MAR. 1942  
 DESCRIPTIONS WRITTEN BY C.K.D. DATE 1-14-37  
 DESCRIPTIONS CHECKED BY T.O.J. DATE 1-14-37

APPROVED BY \_\_\_\_\_ PLANS DEPT.  
 APPROVED BY \_\_\_\_\_ R/W ENGINEER



