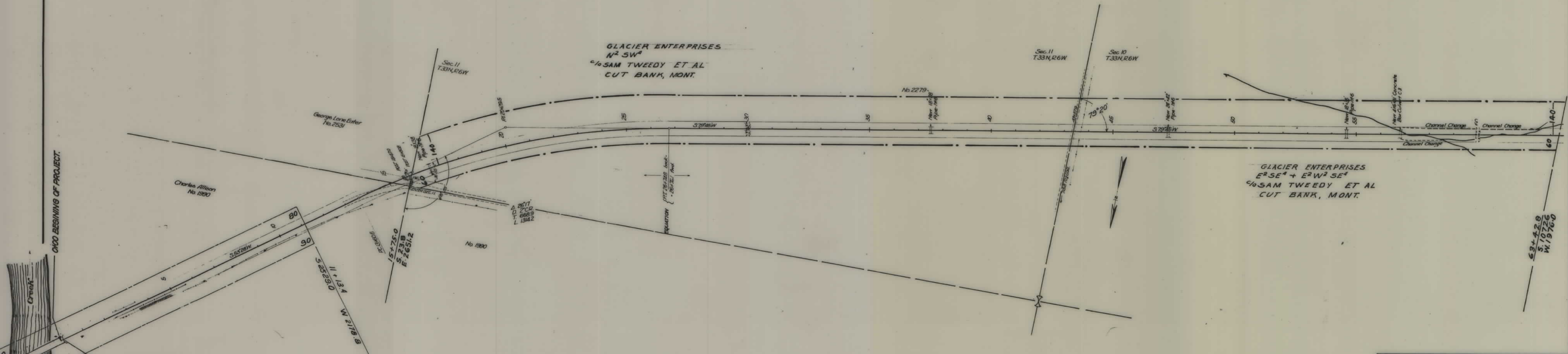


PLANS
NOT
TO
SCALE

FED ROAD DIST NO	STATE	FED AID PROJ NO	R/W NO.	SHEET NO.	TOTAL SHEETS
8	MONT.	F-220		1	1



STATE OF MONTANA
 STATE HIGHWAY COMMISSION
 LAND REQUIRED FOR RIGHT OF WAY
 GLACIER COUNTY
 SCALE 1" = 200' MAP COMPLETED 2-21-55