

PLANS  
NOT  
TO  
SCALE

FED. ROAD DIST. NO.	STATE	FED. AID PROJ. NO.	FISCAL YEAR	SHEET NO.	TOTAL SHEETS
1	MONT.	222-B		1	2

Dr. R.R. Sigler

Sam King

Lot of Stone Bumpaw

Bozeman Country Club  
Bozeman, Mont.

SEC. 8  
T. 25 R. 6E

N 67° 19' W

Irr. Ditch

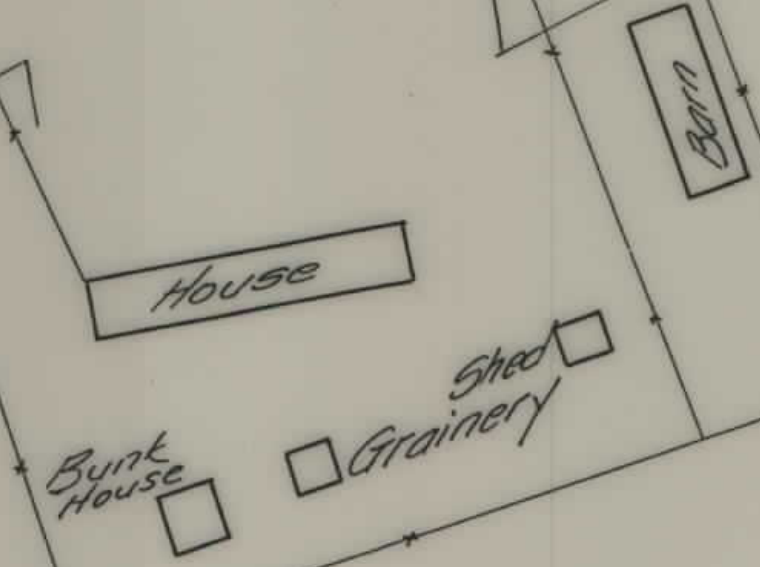
50' 60'

AW 15

Sam King  
R.R. #4  
Bozeman, Mont.

Ernest Kehrberg  
Bozeman, Mont.

Sam King



STA. 0+0.15 BEG. WPMH 222-B  
STA. 36+98.5 F.A.P. 222-B

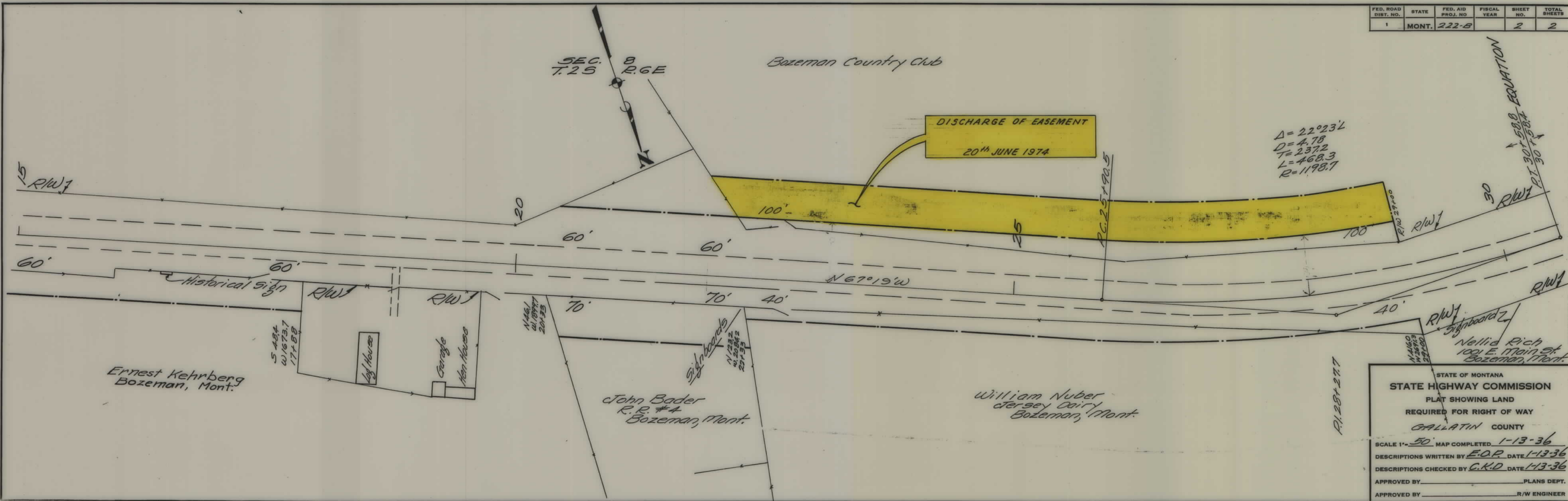
0+0.15 Center Sec. 8  
737.71 to 517.74

S. 514.6  
at 508.1  
- 517.4

S. 239.3  
at 1216.8  
- 547.9

STATE OF MONTANA  
STATE HIGHWAY COMMISSION  
PLAT SHOWING LAND  
REQUIRED FOR RIGHT OF WAY  
GALLATIN COUNTY  
SCALE 1" = 50' MAP COMPLETED 1-13-36  
DESCRIPTIONS WRITTEN BY E.O.P. DATE 1-13-36  
DESCRIPTIONS CHECKED BY C.K.D. DATE 1-13-36  
APPROVED BY \_\_\_\_\_ PLANS DEPT.  
APPROVED BY \_\_\_\_\_ R/W ENGINEER

FED. ROAD DIST. NO.	STATE	FED. AID PROJ. NO.	FISCAL YEAR	SHEET NO.	TOTAL SHEETS
1	MONT.	222-B		2	2



STATE OF MONTANA  
**STATE HIGHWAY COMMISSION**  
 PLAT SHOWING LAND  
 REQUIRED FOR RIGHT OF WAY  
 GALLATIN COUNTY  
 SCALE 1" = 50' MAP COMPLETED 1-13-36  
 DESCRIPTIONS WRITTEN BY E.O.P. DATE 1-13-36  
 DESCRIPTIONS CHECKED BY C.K.D. DATE 1-13-36  
 APPROVED BY \_\_\_\_\_ PLANS DEPT.  
 APPROVED BY \_\_\_\_\_ R/W ENGINEER