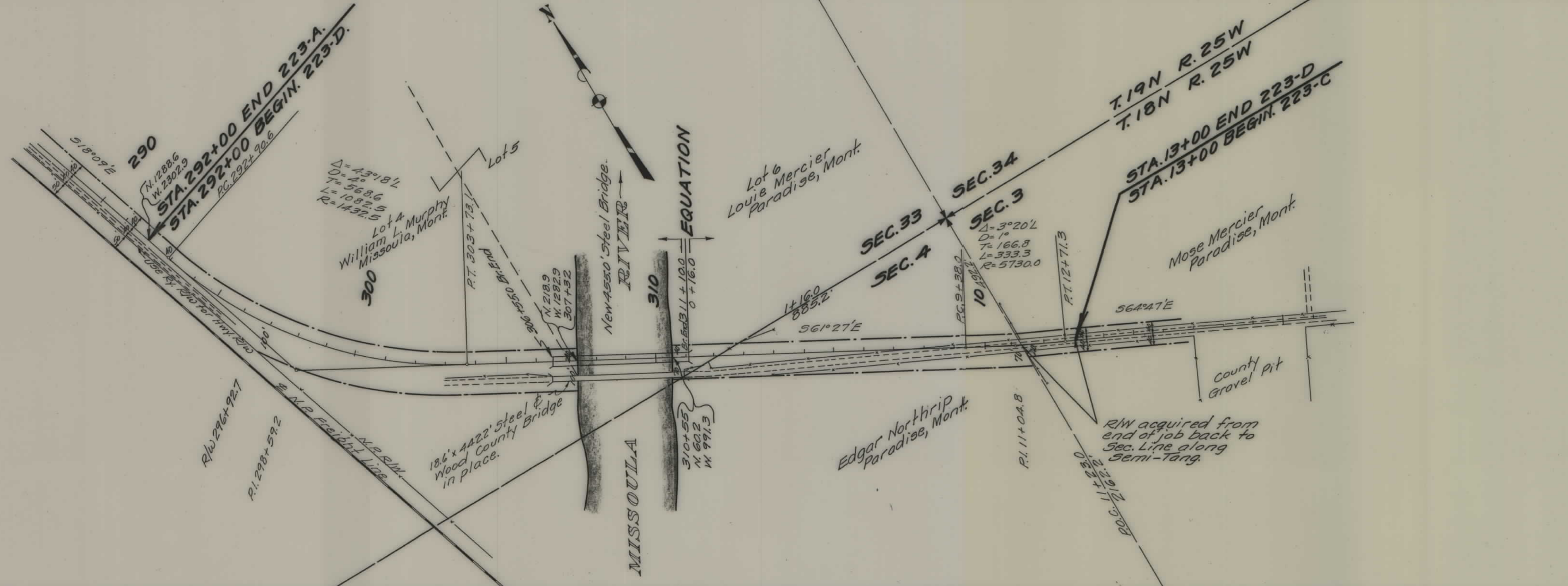


PLANS  
NOT  
TO  
SCALE

FED. ROAD DIST. NO.	STATE	FED. AID PROJ. NO.	FISCAL YEAR	SHEET NO.	TOTAL SHEETS
1	MONT.	223-D		1	1



STATE OF MONTANA  
**STATE HIGHWAY COMMISSION**  
 PLAT SHOWING LAND  
 REQUIRED FOR RIGHT OF WAY  
 SANDERS COUNTY

SCALE 1" = 200' MAP COMPLETED \_\_\_\_\_  
 DESCRIPTIONS WRITTEN BY \_\_\_\_\_ DATE \_\_\_\_\_  
 DESCRIPTIONS CHECKED BY \_\_\_\_\_ DATE \_\_\_\_\_  
 APPROVED BY \_\_\_\_\_ PLANS DEPT. \_\_\_\_\_  
 APPROVED BY \_\_\_\_\_ R.W. ENGINEER \_\_\_\_\_

*R/W inked & checked on plans*