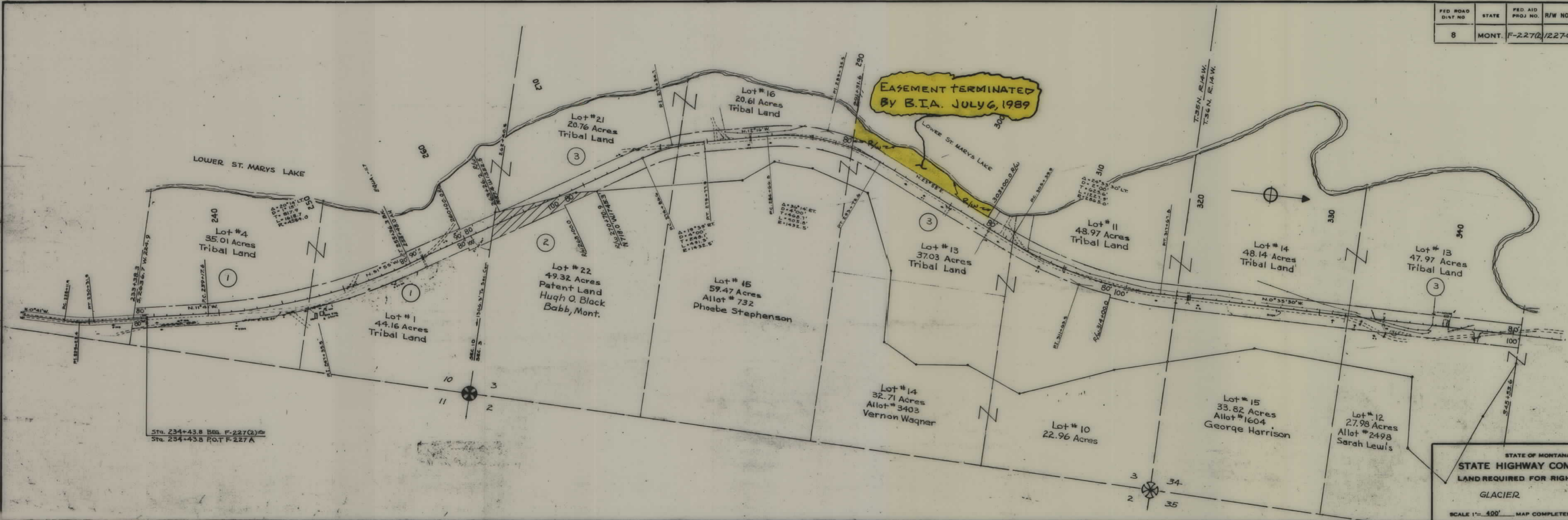


PLANS
NOT
TO
SCALE

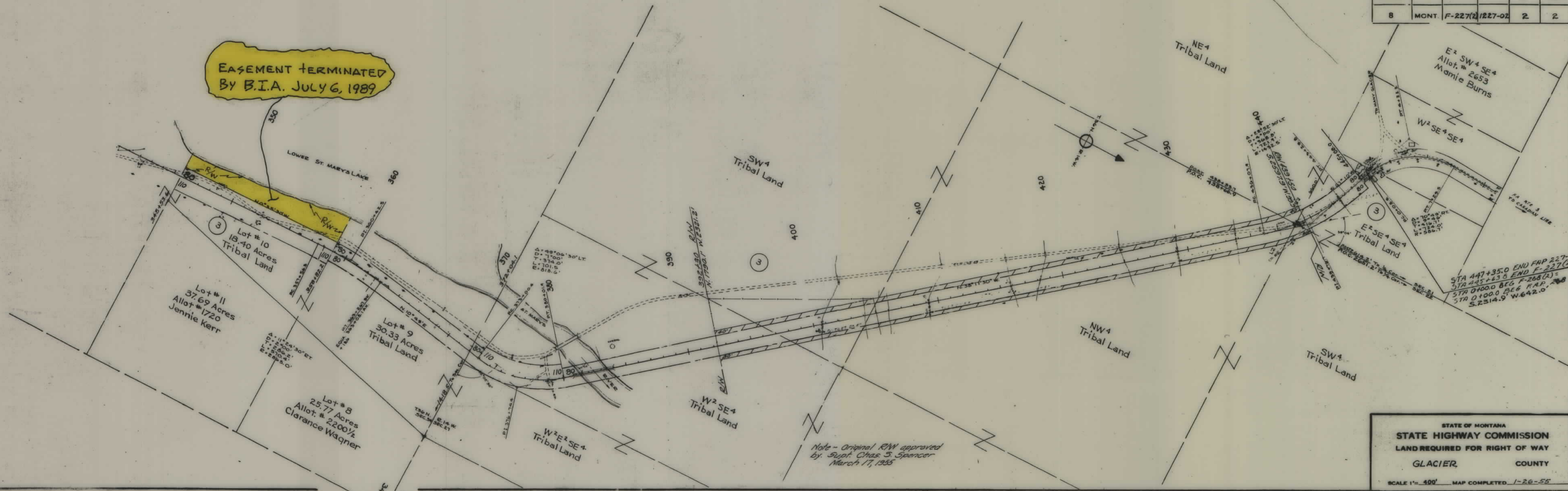
FED ROAD DIST NO	STATE	FED AID PROJ NO.	R/W NO.	SHEET NO.	TOTAL SHEETS
8	MONT.	F-227(2)	1/227-02	1	2



STATE OF MONTANA
STATE HIGHWAY COMMISSION
 LAND REQUIRED FOR RIGHT OF WAY
 GLACIER COUNTY
 SCALE 1" = 400' MAP COMPLETED 1-26-55

FED ROAD DIST NO	STATE	FED AID PROJ NO	R/W NO.	SHEET NO	TOTAL SHEETS
8	MONT.	F-227(2)	1227-02	2	2

**EASEMENT TERMINATED
BY B.I.A. JULY 6, 1989**



STA 447+35.0 END FAP 227
 STA 447+63.8 END F-227(C)
 STA 0+00.0 BEG F-268(A)
 STA 0+00.0 BEG F.A.P. 268
 S. 2314.9' W. 642.0'

Note - Original RW approved
 by Supr. Chas. S. Spencer
 March 17, 1955

STATE OF MONTANA
STATE HIGHWAY COMMISSION
 LAND REQUIRED FOR RIGHT OF WAY
 GLACIER COUNTY
 SCALE 1" = 400' MAP COMPLETED 1-26-55