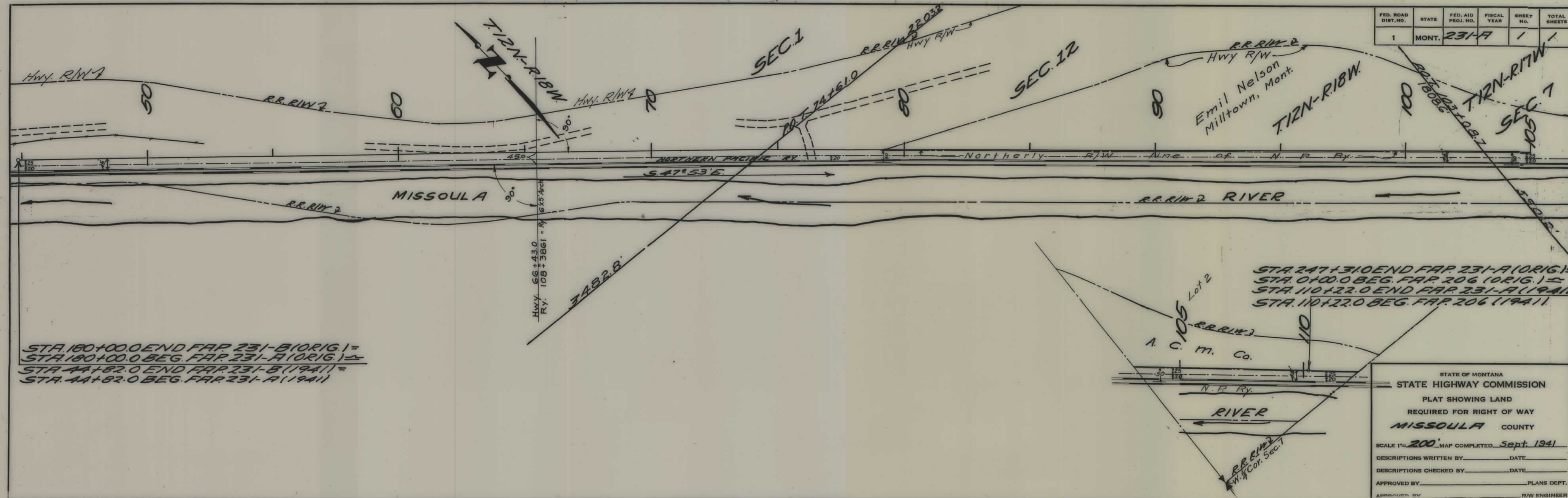


PLANS
NOT
TO
SCALE

FED. ROAD DIST. NO.	STATE	FED. AID PROJ. NO.	FISCAL YEAR	SHEET NO.	TOTAL SHEETS
1	MONT.	231-A		1	1



STA 180+00.0 END FAR 231-B (ORIG.) =
 STA 180+00.0 BEG. FAR 231-A (ORIG.) =
 STA 44+82.0 END FAR 231-B (1941) =
 STA 44+82.0 BEG. FAR 231-A (1941) =

STA 247+310 END FAR 231-A (ORIG.) =
 STA 0+00.0 BEG. FAR 206 (ORIG.) =
 STA 110+22.0 END FAR 231-A (1941) =
 STA 110+22.0 BEG. FAR 206 (1941) =

STATE OF MONTANA
 STATE HIGHWAY COMMISSION
 PLAT SHOWING LAND
 REQUIRED FOR RIGHT OF WAY
 MISSOULA COUNTY
 SCALE 1" = 200' MAP COMPLETED Sept. 1941
 DESCRIPTIONS WRITTEN BY _____ DATE _____
 DESCRIPTIONS CHECKED BY _____ DATE _____
 APPROVED BY _____ PLANS DEPT.
 APPROVED BY _____ R/W ENGINEER