

PLANS  
NOT  
TO  
SCALE



DIST NO	STATE	FED. AID PROJ. NO.	SHEET NO.	TOTAL SHEETS
1	MONT	235-F	1	11

Dakota & Gt. Nor. Townsite Co.  
 1/4 James T. Maher, Tax Comm.  
 St. Paul, Minn.  
 Pl. 33+00

QUIT CLAIM DEED  
 MONTANA POWER  
 COMPANY INC.  
 FEBRUARY 15, 1991

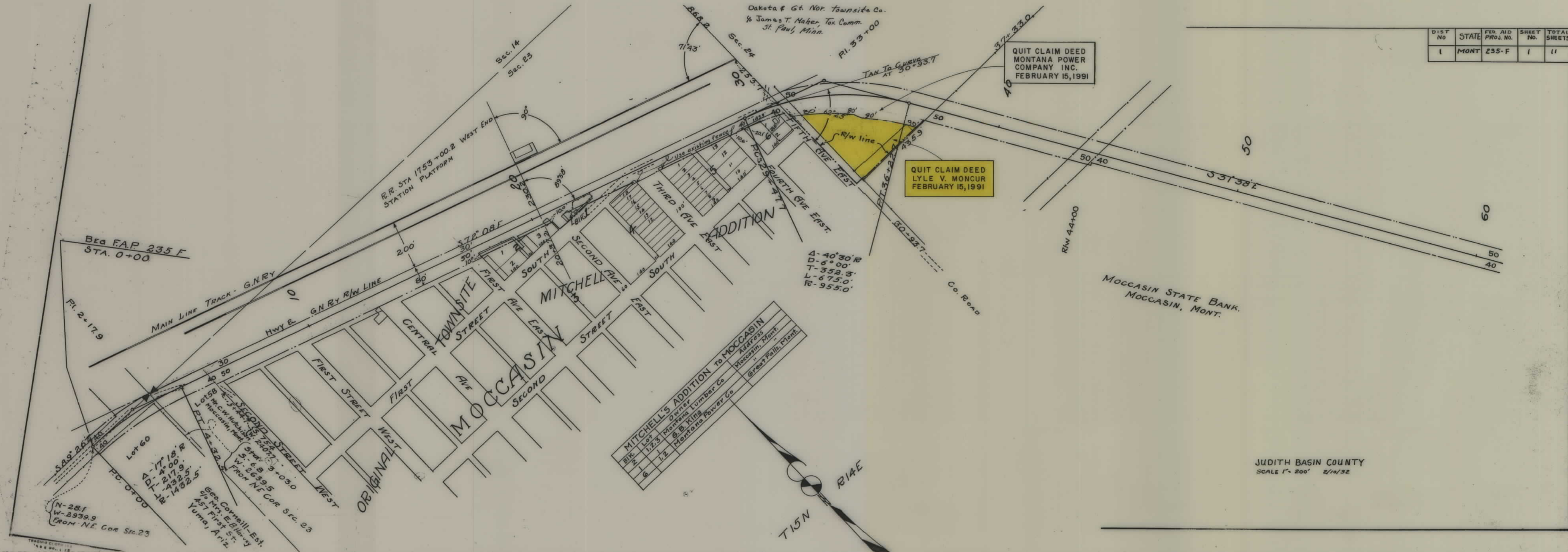
QUIT CLAIM DEED  
 LYLE V. MONCUR  
 FEBRUARY 15, 1991

MITCHELL'S ADDITION TO MOCCASIN	
Blk.	Owner
1	Montana Lumber Co
2	Montana Lumber Co
3	Montana Lumber Co
4	Montana Lumber Co
5	Montana Lumber Co
6	Montana Lumber Co
7	Montana Lumber Co
8	Montana Lumber Co
9	Montana Lumber Co
10	Montana Lumber Co
11	Montana Lumber Co
12	Montana Lumber Co
13	Montana Lumber Co
14	Montana Lumber Co
15	Montana Lumber Co
16	Montana Lumber Co
17	Montana Lumber Co
18	Montana Lumber Co
19	Montana Lumber Co
20	Montana Lumber Co
21	Montana Lumber Co
22	Montana Lumber Co
23	Montana Lumber Co
24	Montana Lumber Co
25	Montana Lumber Co
26	Montana Lumber Co
27	Montana Lumber Co
28	Montana Lumber Co
29	Montana Lumber Co
30	Montana Lumber Co
31	Montana Lumber Co
32	Montana Lumber Co
33	Montana Lumber Co
34	Montana Lumber Co
35	Montana Lumber Co
36	Montana Lumber Co
37	Montana Lumber Co
38	Montana Lumber Co
39	Montana Lumber Co
40	Montana Lumber Co
41	Montana Lumber Co
42	Montana Lumber Co
43	Montana Lumber Co
44	Montana Lumber Co
45	Montana Lumber Co
46	Montana Lumber Co
47	Montana Lumber Co
48	Montana Lumber Co
49	Montana Lumber Co
50	Montana Lumber Co
51	Montana Lumber Co
52	Montana Lumber Co
53	Montana Lumber Co
54	Montana Lumber Co
55	Montana Lumber Co
56	Montana Lumber Co
57	Montana Lumber Co
58	Montana Lumber Co
59	Montana Lumber Co
60	Montana Lumber Co
61	Montana Lumber Co
62	Montana Lumber Co
63	Montana Lumber Co
64	Montana Lumber Co
65	Montana Lumber Co
66	Montana Lumber Co
67	Montana Lumber Co
68	Montana Lumber Co
69	Montana Lumber Co
70	Montana Lumber Co
71	Montana Lumber Co
72	Montana Lumber Co
73	Montana Lumber Co
74	Montana Lumber Co
75	Montana Lumber Co
76	Montana Lumber Co
77	Montana Lumber Co
78	Montana Lumber Co
79	Montana Lumber Co
80	Montana Lumber Co
81	Montana Lumber Co
82	Montana Lumber Co
83	Montana Lumber Co
84	Montana Lumber Co
85	Montana Lumber Co
86	Montana Lumber Co
87	Montana Lumber Co
88	Montana Lumber Co
89	Montana Lumber Co
90	Montana Lumber Co
91	Montana Lumber Co
92	Montana Lumber Co
93	Montana Lumber Co
94	Montana Lumber Co
95	Montana Lumber Co
96	Montana Lumber Co
97	Montana Lumber Co
98	Montana Lumber Co
99	Montana Lumber Co
100	Montana Lumber Co

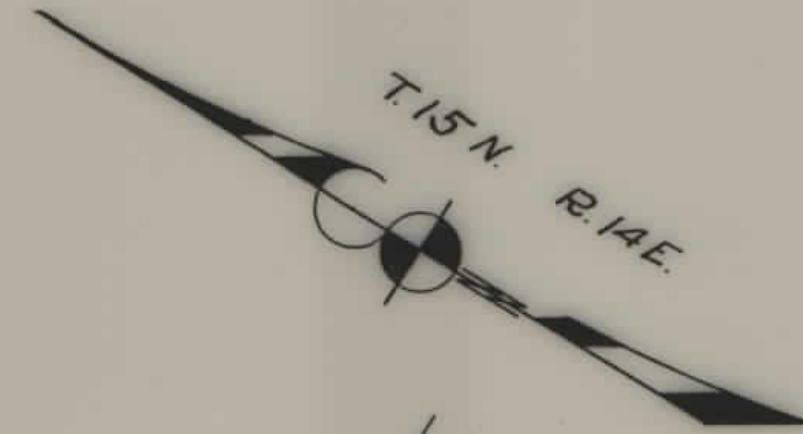


JUDITH BASIN COUNTY  
 SCALE 1" = 200' 2/10/92

MOCCASIN STATE BANK.  
 MOCCASIN, MONT.







DIST No.	STATE	FED AID PROJ. NO.	SHEET NO.	TOTAL SHEET
1	MONT	235-F	2	11

60

50  
40

2033.6

JOSEPH MESSNER  
MOCCASIN MONT.

68+62.0

70

R/W 79+00

80

50 40

Sec. 24  
3020'

Sec. 25

84+57.8

90

J.F. KOLP  
125 SANTA ANA AVE.  
SAN FRANCISCO, CALIF.

91+00  
6x6 CON BOX

S31°38'E

40 50

100

110

99+22.0

Sec. 30

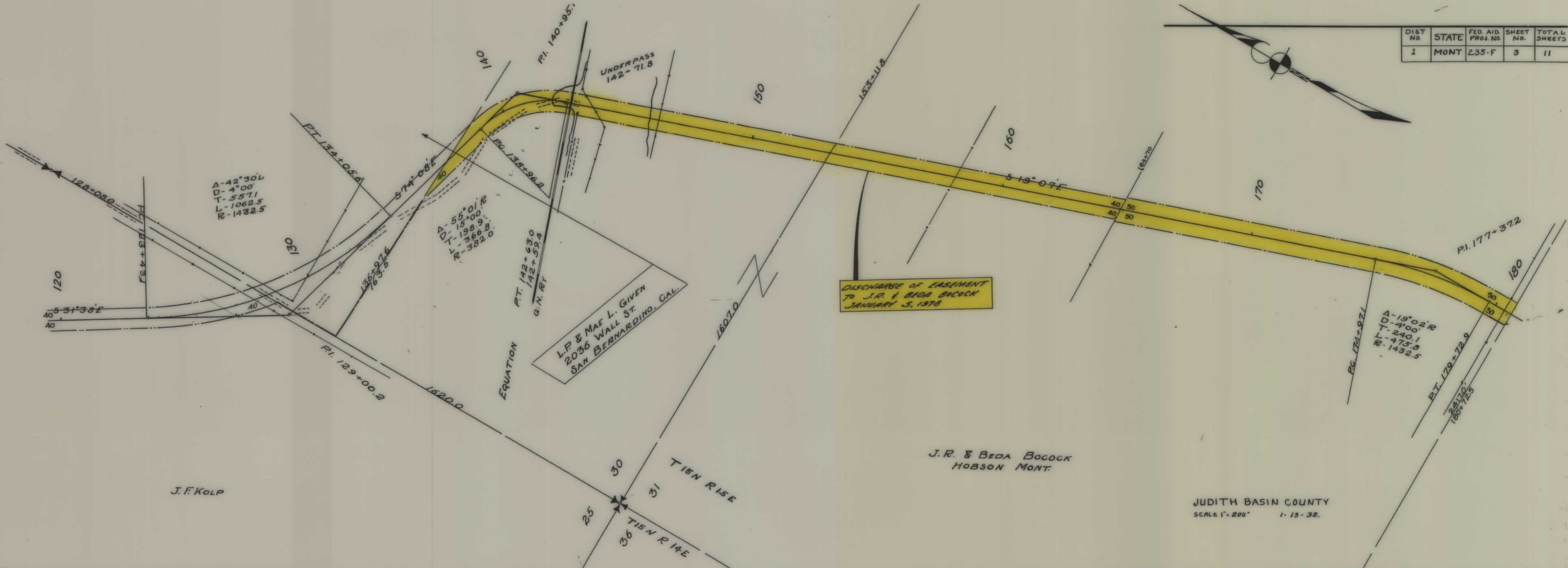
Sec. 25

120

50 40

JUDITH BASIN COUNTY  
SCALE 1" = 200' 1-13-32

DIST. NO.	STATE	FED. AID. PROJ. NO.	SHEET NO.	TOTAL SHEETS
1	MONT	235-F	3	11



J.F. KOLP

JUDITH BASIN COUNTY  
SCALE 1" = 200' 1-13-32.





SHEET No	TOTAL SHEETS
4	11

FED. AID  
PROJ. NO.  
235-F

HOBSON TOWNSHIP CO.  
% O.W. BELDEN  
LEWISTOWN, MONT.

STOCK YARDS

JUNK YARD

HOBSON

A-81'42"  
L-6'00"  
L-825.3  
R-1361.7  
R-955.0

JUDITH BASIN COUNTY  
SCALE 1" = 200' 1-13-32

ST THOMAS ORPHANS HOME,  
GREAT FALLS, MONT.

F.P. THORNE  
WATERVILLE KAN.

FRANK HAUCK  
HOBSON MONT.

JEAN HENRY ET AL.  
% E.O. JENKINS.  
Box 1341 - BILLINGS.

JUDITH RIVER



Sec. 31

Sec. 6

T.15N. R.15E.

T.14N. R.15E.

R/W 198+00

R/W 213+00

220+34.0

190.2

40 70

3458

CG. 227+84.7

234+04.0

PI. 236+10.5

G.N. RY R/W

PT. 241+46.4

250

70

40

180

50

40

50

190

200

220

230

240

180+72.5

2417.0

2439.0

S 0° 05' E

50 40

40 90

90 40

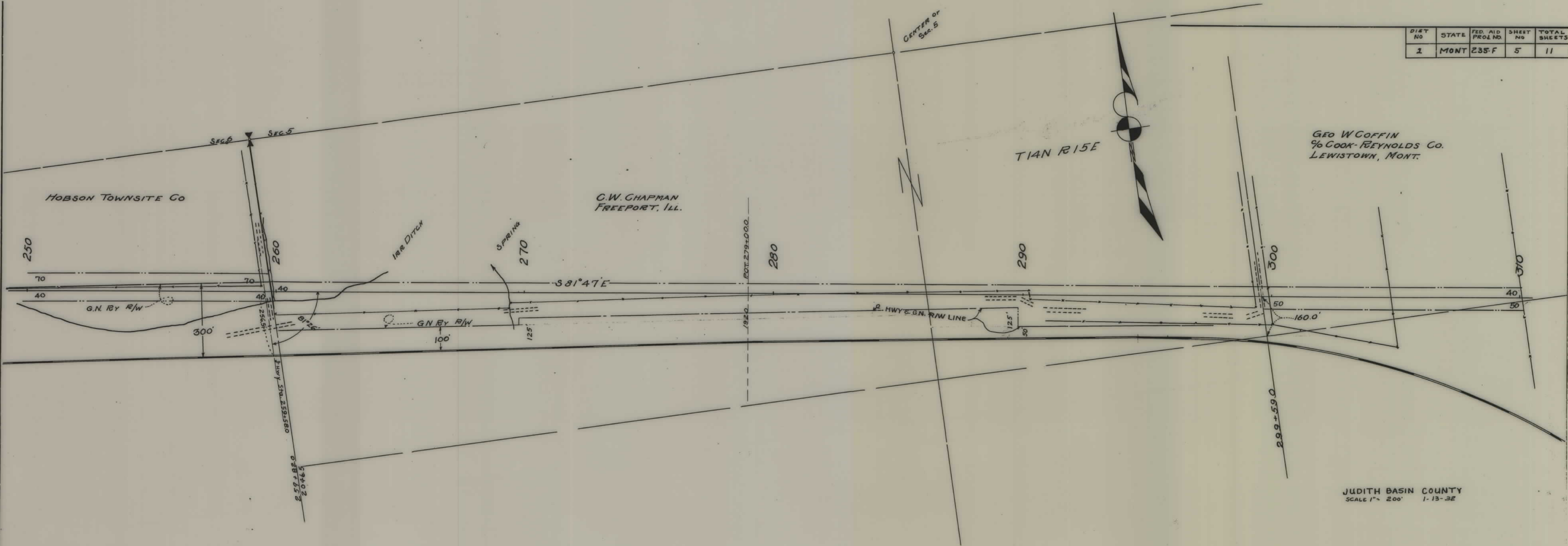
96° 23'

S 81° 47' E

1st DITCH

1st DITCH

DIST NO	STATE	FED. AID PROJ. NO.	SHEET NO	TOTAL SHEETS
1	MONT	235-F	5	11

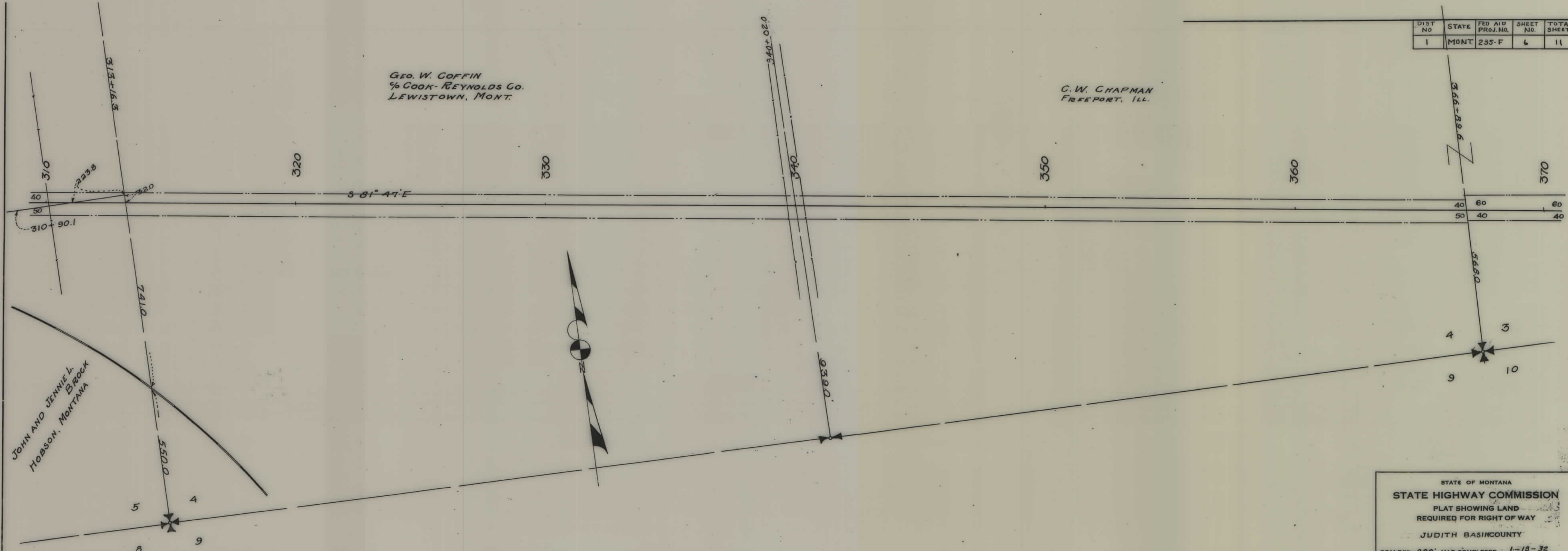


GEO W COFFIN  
 % COOK-REYNOLDS CO.  
 LEWISTOWN, MONT.

JUDITH BASIN COUNTY  
 SCALE 1" = 200' 1-13-32



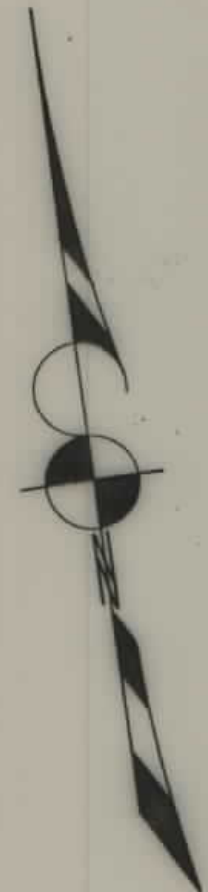
DIST NO	STATE	FED AID PROJ. NO.	SHEET NO.	TOTAL SHEETS
1	MONT.	235-F	6	11



STATE OF MONTANA  
**STATE HIGHWAY COMMISSION**  
 PLAT SHOWING LAND  
 REQUIRED FOR RIGHT OF WAY  
 JUDITH BASIN COUNTY  
 SCALE: 1" = 200'. MAP COMPLETED 1-13-32

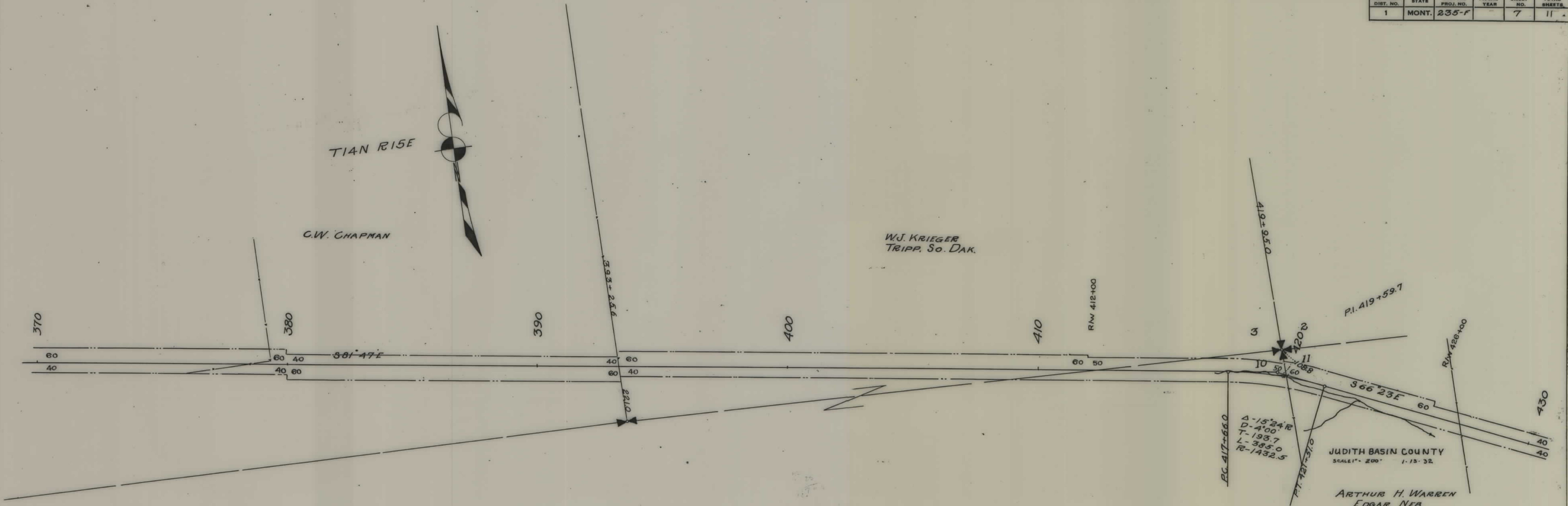
FED. ROAD DIST. NO.	STATE	FED. AID PROJ. NO.	FISCAL YEAR	SHEET NO.	TOTAL SHEETS
1	MONT.	235-F		7	11

TIAN RISE



C.W. CHAPMAN

W.J. KRIEGER  
TRIPP, So. DAK.



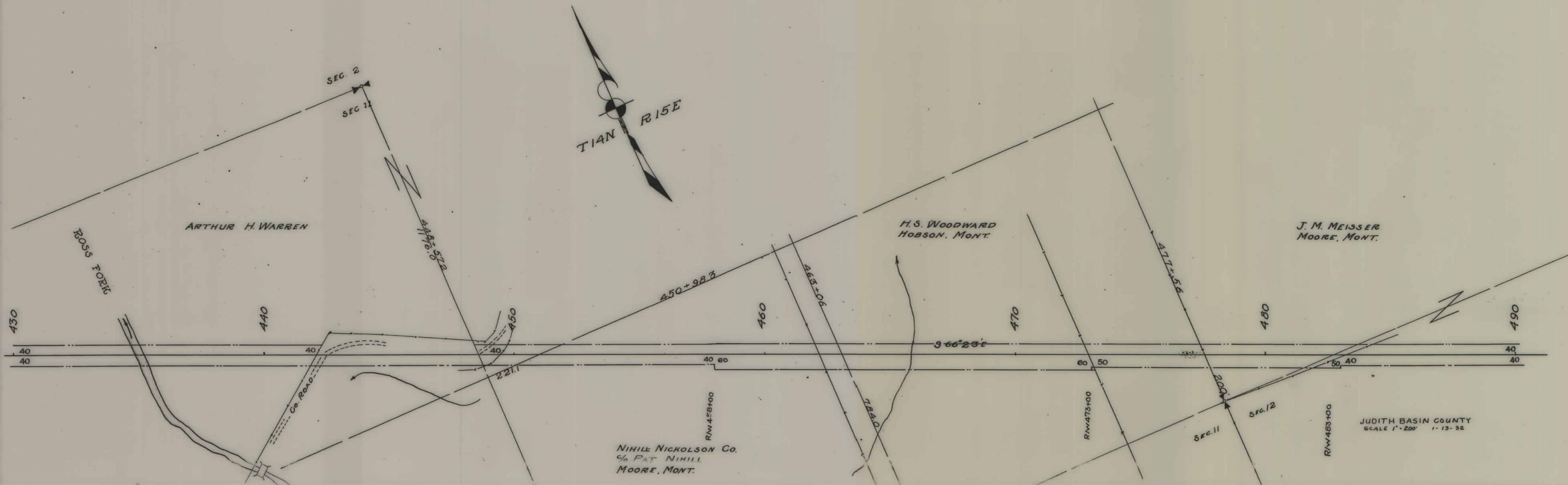
PC 417+66.0  
 $\Delta - 15^{\circ}24' R$   
 $D - 4^{\circ}00'$   
 $T - 193.7$   
 $L - 385.0$   
 $R - 1432.5$

JUDITH BASIN COUNTY  
 SCALE 1" = 200' 1-13-32

ARTHUR H. WARREN  
 EDGAR, NEB.

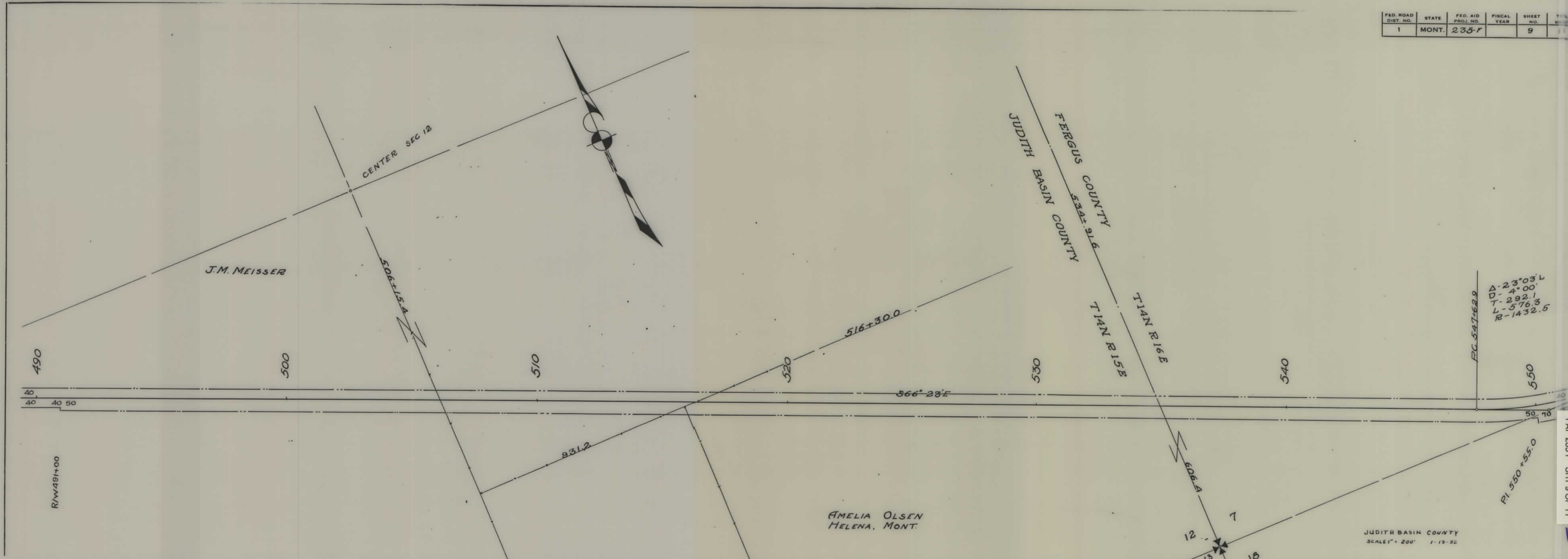


FED. ROAD DIST. NO.	STATE	FED. AID PROJ. NO.	FISCAL YEAR	SHEET NO.	TOTAL SHEETS
1	MONT.	235-F		8	11



JUDITH BASIN COUNTY  
SCALE 1" = 200' 1-13-32

FED. ROAD DIST. NO.	STATE	FED. AID PROJ. NO.	FISCAL YEAR	SHEET NO.	TOTAL SHEETS
1	MONT.	235-F		9	



J.M. MEISSER

AMELIA OLSEN  
HELENA, MONT.

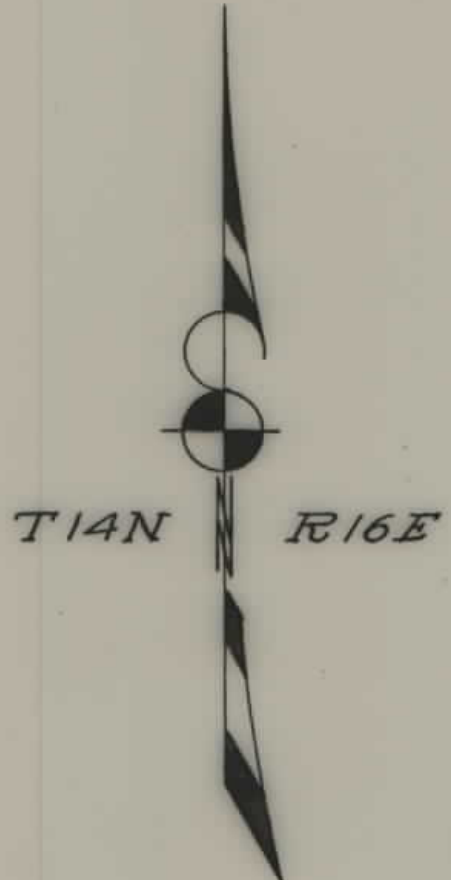
Δ-23°03' L  
D-4°00' L  
T-292.1  
L-576.3  
R-1432.5

JUDITH BASIN COUNTY  
SCALE 1" = 200' 1-13-32

FAP 235 F SHT 9 OF 11

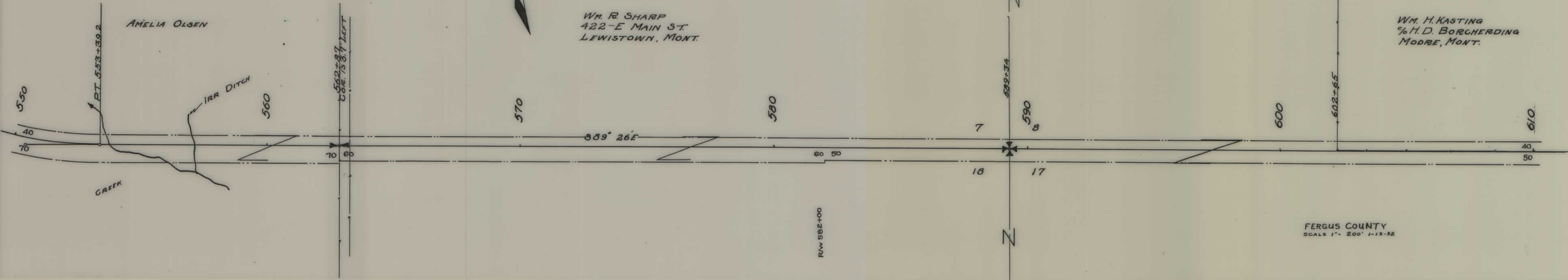


FED. ROAD DIST. NO.	STATE	FED. AID PROJ. NO.	FISCAL YEAR	SHEET NO.	TOTAL SHEETS
1	MONT.	235-F		10	11



WM. R. SHARP  
422-E MAIN ST.  
LEWISTOWN, MONT.

WM. H. KASTING  
% H. D. BORCHERDING  
MUDRE, MONT.

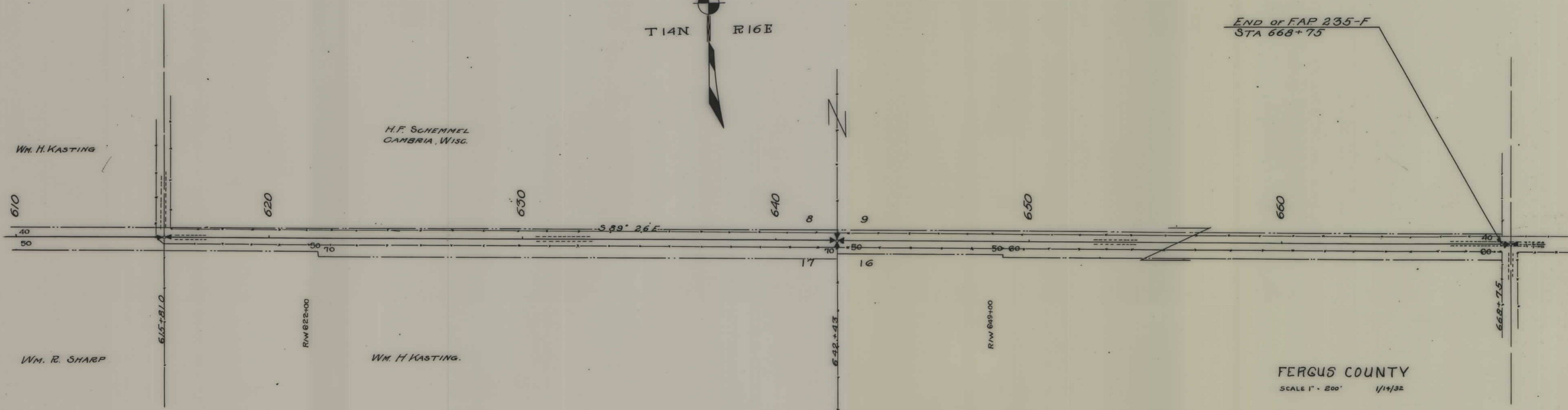


FERGUS COUNTY  
SCALE 1" = 200' 1-13-32

DIST No.	STATE	FED AID PROJ. No.	SHEET No.	TOTAL SHEETS
1	MONT	235-F	11	11



END of FAP 235-F  
STA 668+75



FERGUS COUNTY  
SCALE 1" = 200' 1/14/32

5