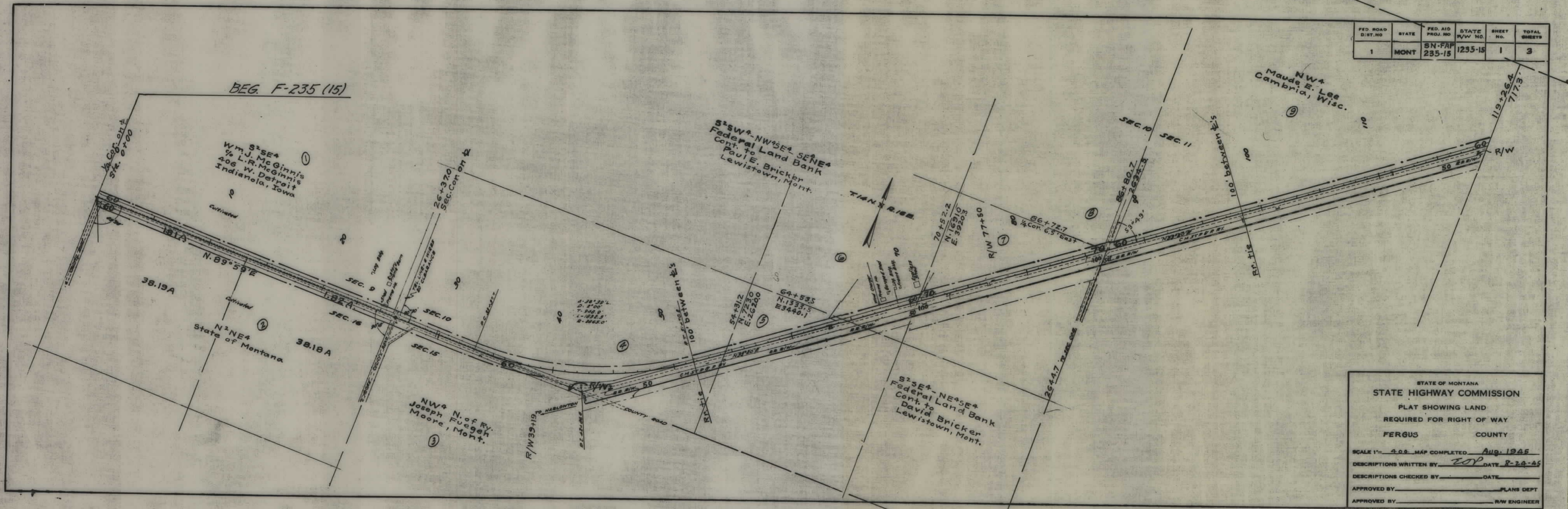


PLANS  
NOT  
TO  
SCALE

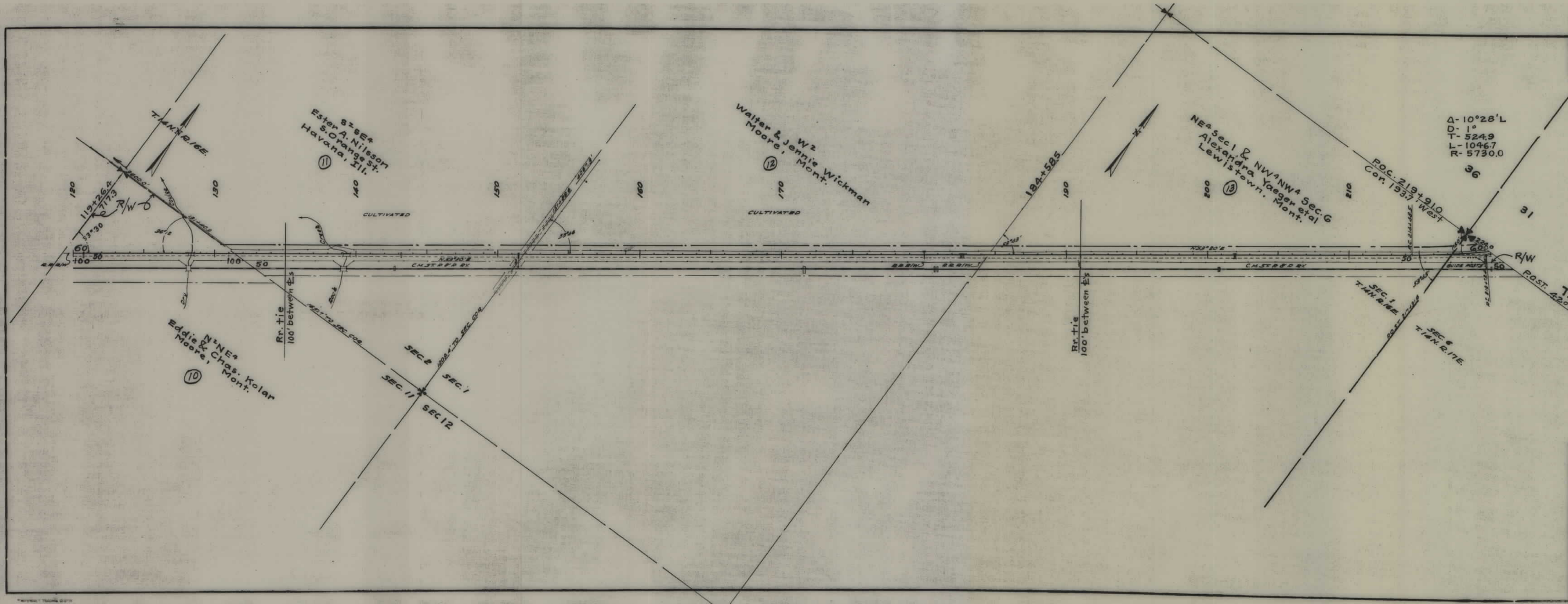
FED. ROAD DIST. NO.	STATE	FED. AID PROJ. NO.	STATE P/W NO.	SHEET NO.	TOTAL SHEETS
1	MONT	SN-FAP 235-15	1235-15	1	3



STATE OF MONTANA  
 STATE HIGHWAY COMMISSION  
 PLAT SHOWING LAND  
 REQUIRED FOR RIGHT OF WAY  
 FERGUS COUNTY

SCALE 1" = 400' MAP COMPLETED Aug. 1945  
 DESCRIPTIONS WRITTEN BY EOP DATE 8-24-45  
 DESCRIPTIONS CHECKED BY \_\_\_\_\_ DATE \_\_\_\_\_  
 APPROVED BY \_\_\_\_\_ PLANS DEPT  
 APPROVED BY \_\_\_\_\_ R/W ENGINEER

FED. ROAD DIST. NO.	STATE	FED. AID PROJ. NO.	STATE P/SV NO.	SHEET No.	TOTAL SHEETS
1	MONT	SN-FAP 235-15	1235-15	2	3



STATE OF MONTANA  
 STATE HIGHWAY COMMISSION  
 PLAT SHOWING LAND  
 REQUIRED FOR RIGHT OF WAY  
 FERGUS COUNTY

SCALE 1" = 400' MAP COMPLETED Aug. 1945  
 DESCRIPTIONS WRITTEN BY TOP DATE 8-22-45  
 DESCRIPTIONS CHECKED BY \_\_\_\_\_ DATE \_\_\_\_\_  
 APPROVED BY \_\_\_\_\_ PLANS DEPT.  
 APPROVED BY \_\_\_\_\_ R/W ENGINEER

FED. ROAD DIST. NO.	STATE	FED. AID PROJ. NO.	STATE R/W NO.	SHEET NO.	TOTAL SHEETS
1-	MONT.	SN-FAP 235-15	1235-15	3	3

SE<sup>4</sup>SE<sup>4</sup> Sec. 30 - SW<sup>4</sup>SE<sup>4</sup>NW<sup>4</sup>SW<sup>4</sup>NE<sup>4</sup>  
Joseph & Katharina Stahl  
Lewistown, Mont.

E<sup>2</sup>  
Frank J. Yaeger et al  
Lewistown, Mont.

SW<sup>4</sup>  
J. N. Osborne  
Lewistown, Mont.



Δ-10°28' L  
D-1°  
T-5249  
L-10467  
R-5730.0

P.T. 224+952

R/W - 5/8 235+00

254+08.3  
S 20°29' E  
W 26' 4.2

N. 42°52' E.

46° 22'

Sec. Cor. 13 75 West.

Sec. Cor. 15 80 North

R/W 340+69.0  
N. 32°24' E  
E 317.5.8

END F-235 (15)

STATE OF MONTANA  
STATE HIGHWAY COMMISSION  
PLAT SHOWING LAND  
REQUIRED FOR RIGHT OF WAY  
FERGUS COUNTY

SCALE 1" = 400' MAP COMPLETED Aug. 1945  
DESCRIPTIONS WRITTEN BY EOP DATE 8-23-45  
DESCRIPTIONS CHECKED BY \_\_\_\_\_ DATE \_\_\_\_\_  
APPROVED BY \_\_\_\_\_ PLANS DEPT.  
APPROVED BY \_\_\_\_\_ R/W ENGINEER

T15N RITE  
Sec. 22 250' West  
T14N RITE