

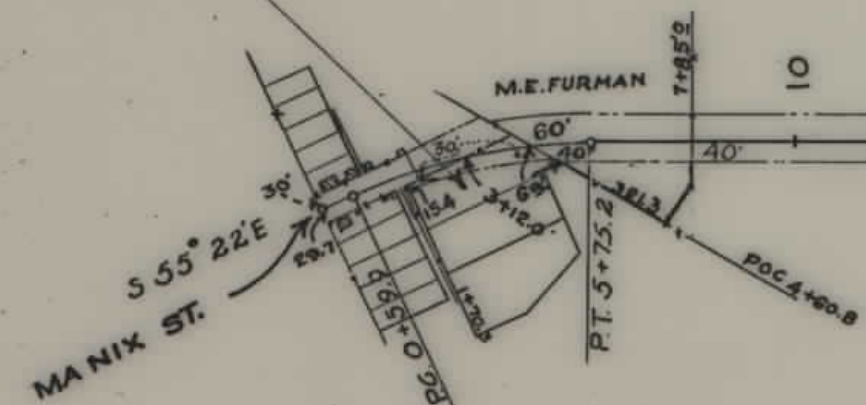
PLANS
NOT
TO
SCALE

| FED. ROAD DIST. NO. | STATE | FED. AID PROJ. NO. | FISCAL YEAR | SHEET NO. | TOTAL SHEETS |
|---------------------|-------|--------------------|-------------|-----------|--------------|
| 1 | MONT. | 238-0 | | 1 | 11 |

AUGUSTA

HENRY ZIMMER
AUGUSTA MONT

A.A. CLEMONS



Δ - 25° 46' R
- 50.00'
L.T.R.
- 262.1'
- 515.3'
- 1146.0'

STATE OF MONTANA

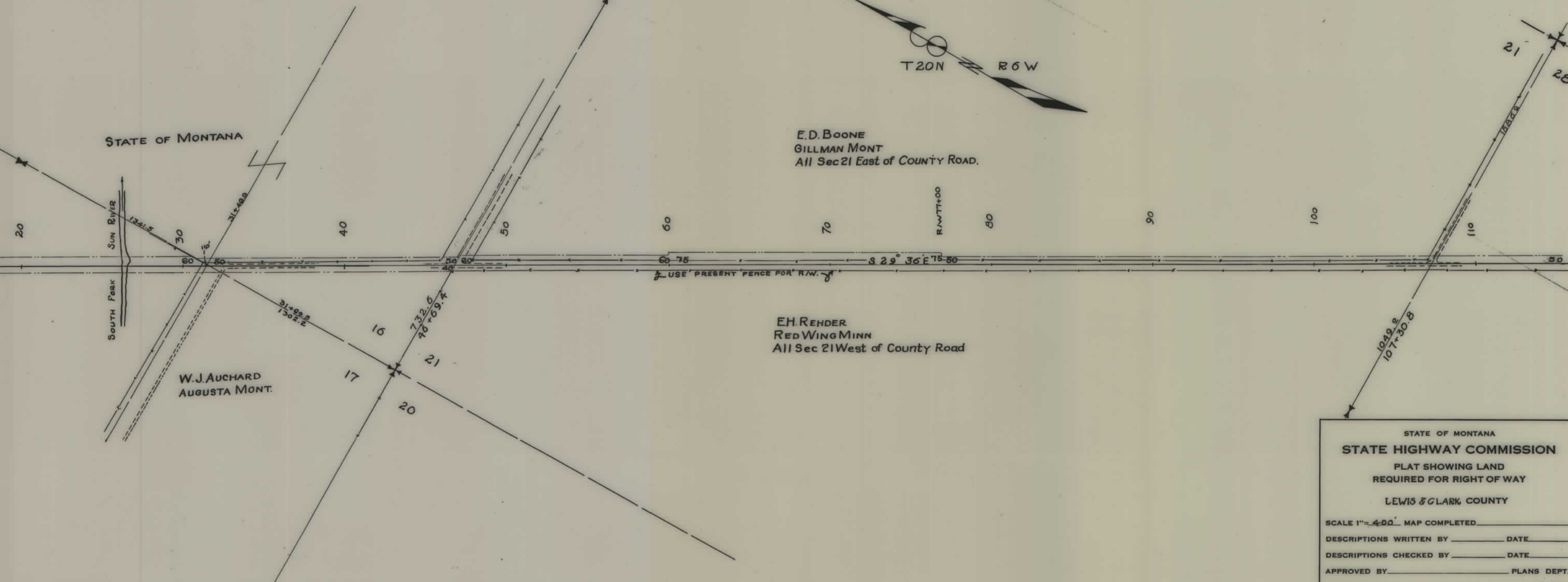
SUN RIVER
SOUTH FERRIS

W.J. AUCHARD
AUGUSTA MONT.

E.D. BOONE
GILLMAN MONT
All Sec 21 East of COUNTY ROAD.

E.H. REHDER
RED WING MINN
All Sec 21 West of COUNTY ROAD

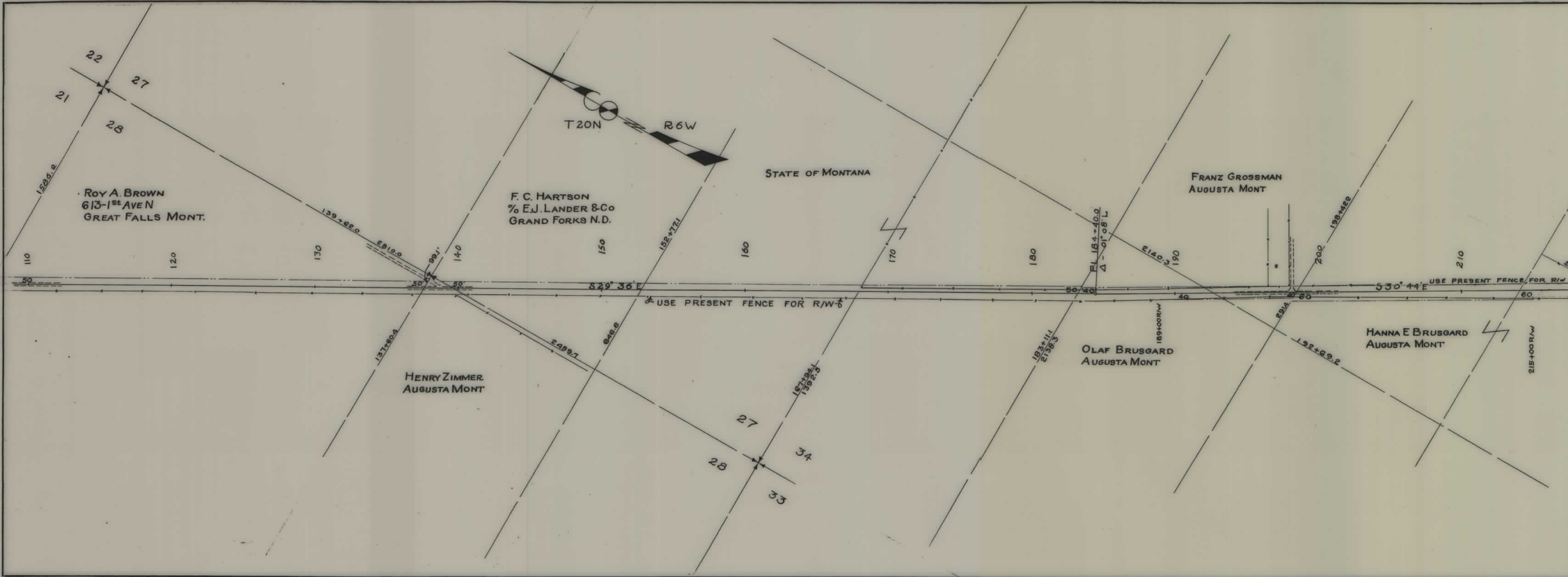
T 20 N R 6 W



STATE OF MONTANA
STATE HIGHWAY COMMISSION
PLAT SHOWING LAND
REQUIRED FOR RIGHT OF WAY
LEWIS & CLARK COUNTY

SCALE 1" = 400' MAP COMPLETED _____
 DESCRIPTIONS WRITTEN BY _____ DATE _____
 DESCRIPTIONS CHECKED BY _____ DATE _____
 APPROVED BY _____ PLANS DEPT.
 APPROVED BY _____ R.W. ENGINEER

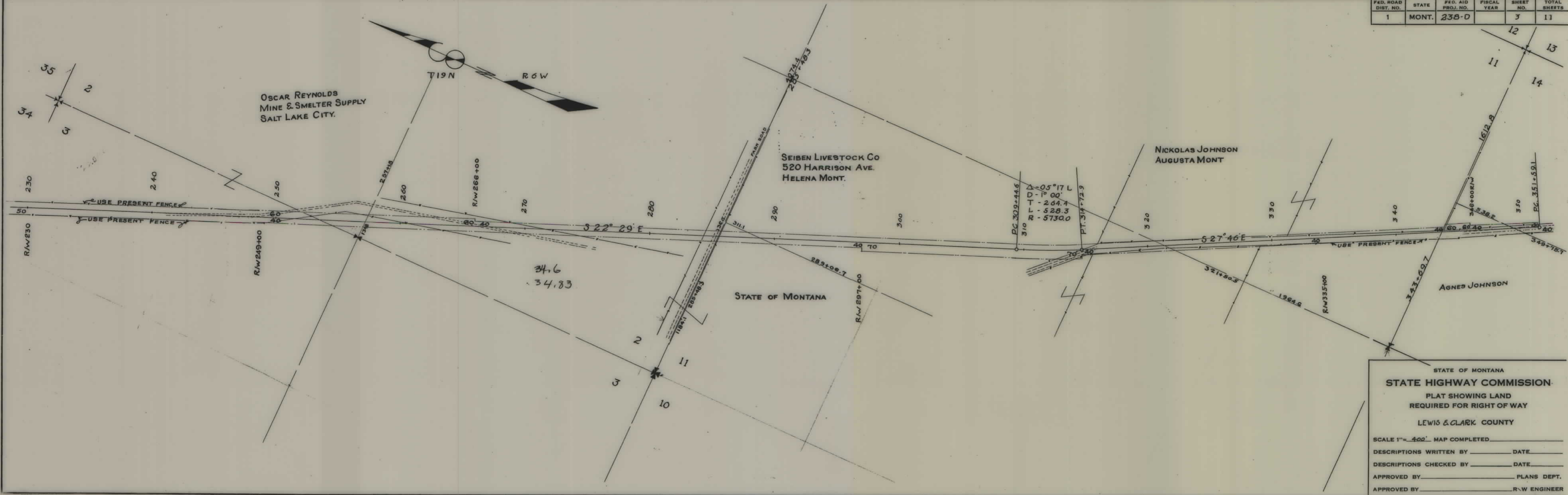
| FED. ROAD DIST. NO. | STATE | FED. AID PROJ. NO. | FISCAL YEAR | SHEET NO. | TOTAL SHEETS |
|---------------------|-------|--------------------|-------------|-----------|--------------|
| 1 | MONT. | 238-D | | 2 | 11 |



STATE OF MONTANA
STATE HIGHWAY COMMISSION
 PLAT SHOWING LAND
 REQUIRED FOR RIGHT OF WAY
 LEWIS & CLARK COUNTY

SCALE 1" = 400' MAP COMPLETED _____
 DESCRIPTIONS WRITTEN BY _____ DATE _____
 DESCRIPTIONS CHECKED BY _____ DATE _____
 APPROVED BY _____ PLANS DEPT.
 APPROVED BY _____ R-W ENGINEER

| FED. ROAD DIST. NO. | STATE | FED. AID PROJ. NO. | FISCAL YEAR | SHEET NO. | TOTAL SHEETS |
|---------------------|-------|--------------------|-------------|-----------|--------------|
| 1 | MONT. | 238-D | | 3 | 11 |



STATE OF MONTANA
STATE HIGHWAY COMMISSION
 PLAT SHOWING LAND
 REQUIRED FOR RIGHT OF WAY
 LEWIS & CLARK COUNTY

SCALE 1" = 400' MAP COMPLETED _____

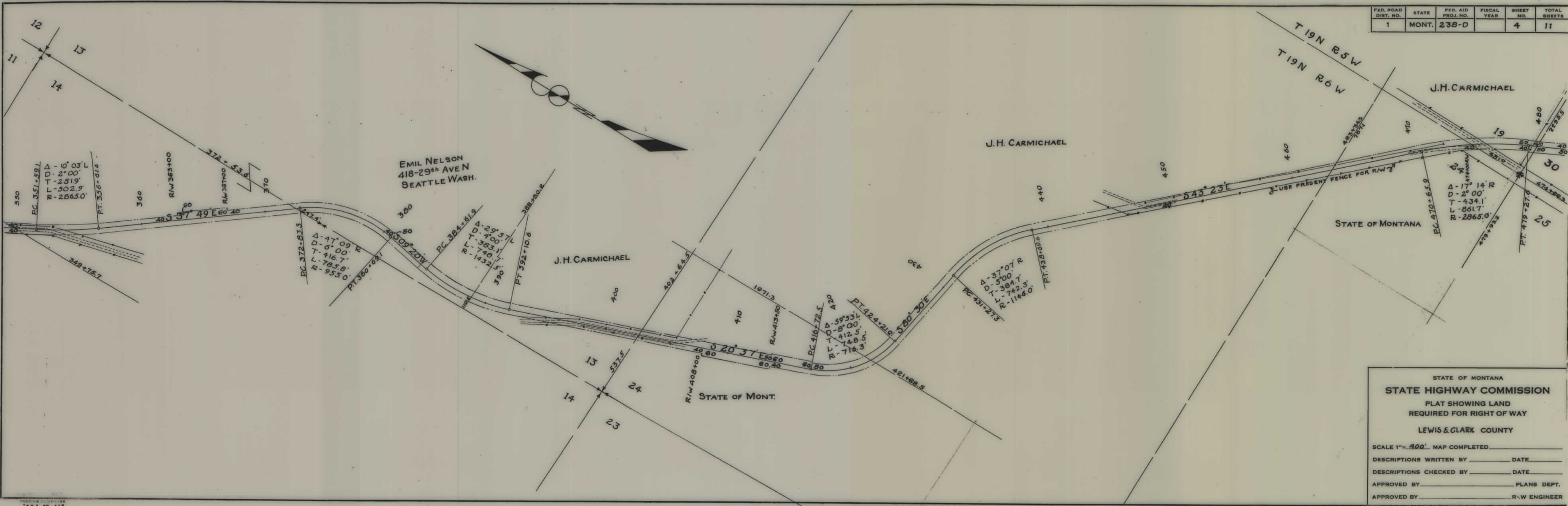
DESCRIPTIONS WRITTEN BY _____ DATE _____

DESCRIPTIONS CHECKED BY _____ DATE _____

APPROVED BY _____ PLANS DEPT.

APPROVED BY _____ R-W ENGINEER

| FED. ROAD DIST. NO. | STATE | FED. AID PROJ. NO. | FISCAL YEAR | SHEET NO. | TOTAL SHEETS |
|---------------------|-------|--------------------|-------------|-----------|--------------|
| 1 | MONT. | 238-D | | 4 | 11 |



STATE OF MONTANA
STATE HIGHWAY COMMISSION
 PLAT SHOWING LAND
 REQUIRED FOR RIGHT OF WAY
 LEWIS & CLARK COUNTY

SCALE 1" = 400'. MAP COMPLETED _____

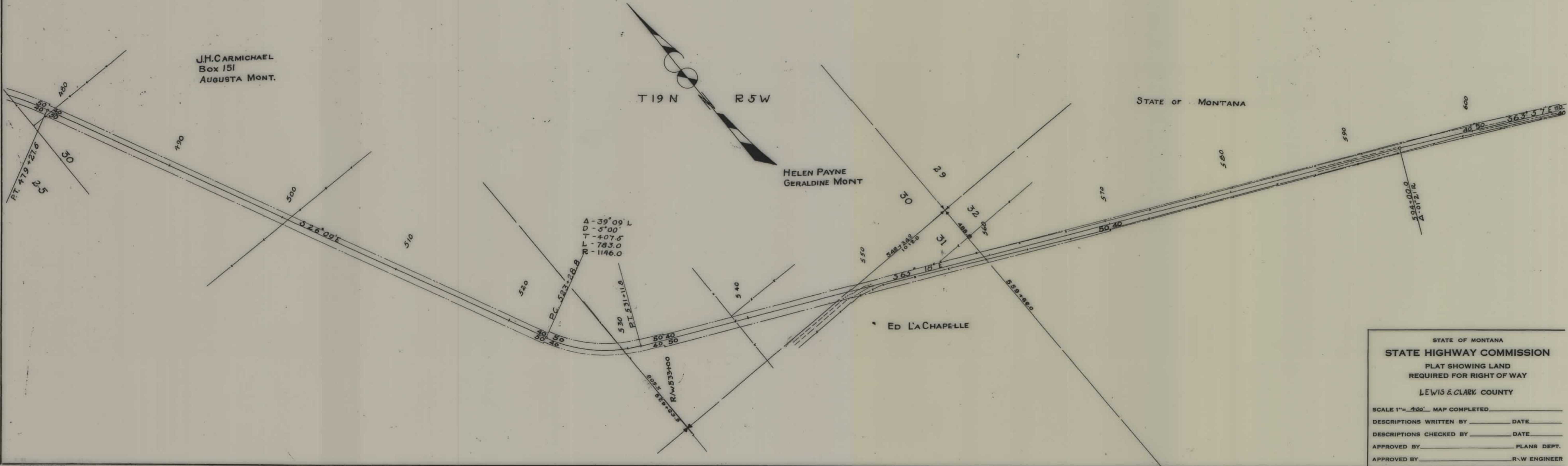
DESCRIPTIONS WRITTEN BY _____ DATE _____

DESCRIPTIONS CHECKED BY _____ DATE _____

APPROVED BY _____ PLANS DEPT.

APPROVED BY _____ R.W. ENGINEER

| FED. ROAD DIST. NO. | STATE | FED. AID PROJ. NO. | FISCAL YEAR | SHEET NO. | TOTAL SHEETS |
|---------------------|-------|--------------------|-------------|-----------|--------------|
| 1 | MONT. | 238-D | | 5 | 11 |



STATE OF MONTANA
STATE HIGHWAY COMMISSION
 PLAT SHOWING LAND
 REQUIRED FOR RIGHT OF WAY
 LEWIS & CLARK COUNTY

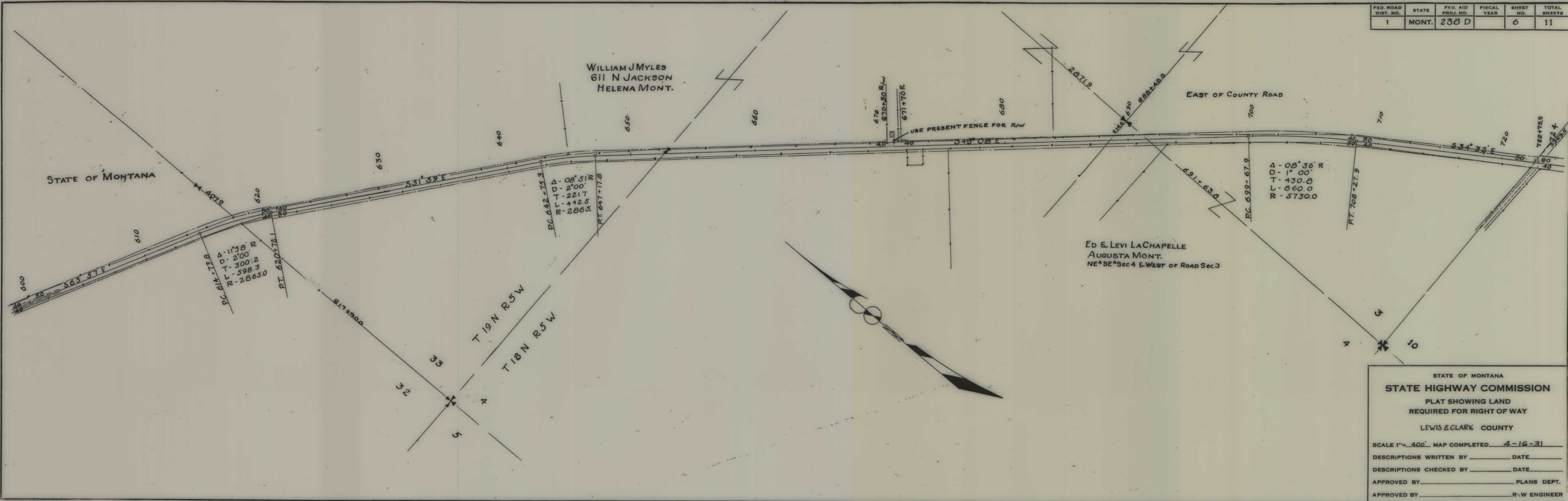
SCALE 1" = 400' MAP COMPLETED _____
 DESCRIPTIONS WRITTEN BY _____ DATE _____
 DESCRIPTIONS CHECKED BY _____ DATE _____
 APPROVED BY _____ PLANS DEPT. _____
 APPROVED BY _____ R-W ENGINEER _____

TRACING CLOTH 132
 7 1/2 x 4 1/2 510

FAP 238D SHT 5 OF 11

5

| FED. ROAD DIST. NO. | STATE | FED. AID PROJ. NO. | FISCAL YEAR | SHEET NO. | TOTAL SHEETS |
|---------------------|-------|--------------------|-------------|-----------|--------------|
| 1 | MONT. | 238 D | | 6 | 11 |



STATE OF MONTANA
STATE HIGHWAY COMMISSION
 PLAT SHOWING LAND
 REQUIRED FOR RIGHT OF WAY
 LEWIS & CLARK COUNTY

SCALE 1" = 400' MAP COMPLETED 4-16-31

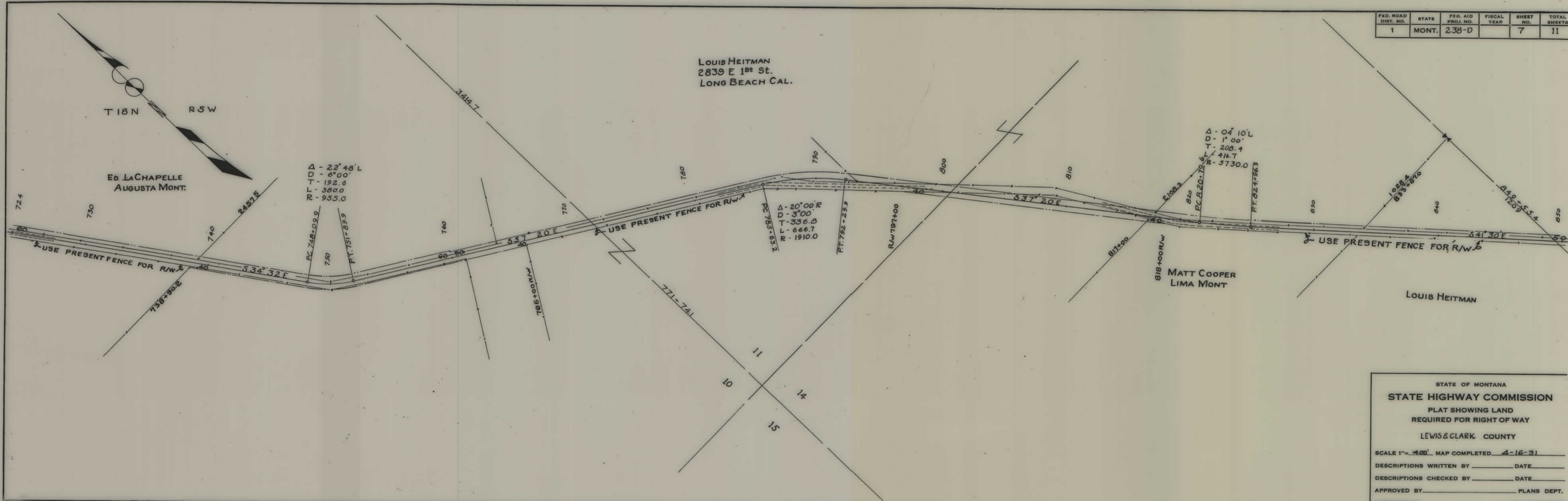
DESCRIPTIONS WRITTEN BY _____ DATE _____

DESCRIPTIONS CHECKED BY _____ DATE _____

APPROVED BY _____ PLANS DEPT.

APPROVED BY _____ R.W. ENGINEER

| FED. ROAD DIST. NO. | STATE | FED. AID PROJ. NO. | FISCAL YEAR | SHEET NO. | TOTAL SHEETS |
|---------------------|-------|--------------------|-------------|-----------|--------------|
| 1 | MONT. | 238-D | | 7 | 11 |



STATE OF MONTANA
STATE HIGHWAY COMMISSION
 PLAT SHOWING LAND
 REQUIRED FOR RIGHT OF WAY
 LEWIS & CLARK COUNTY

SCALE 1" = 400' MAP COMPLETED 4-16-31

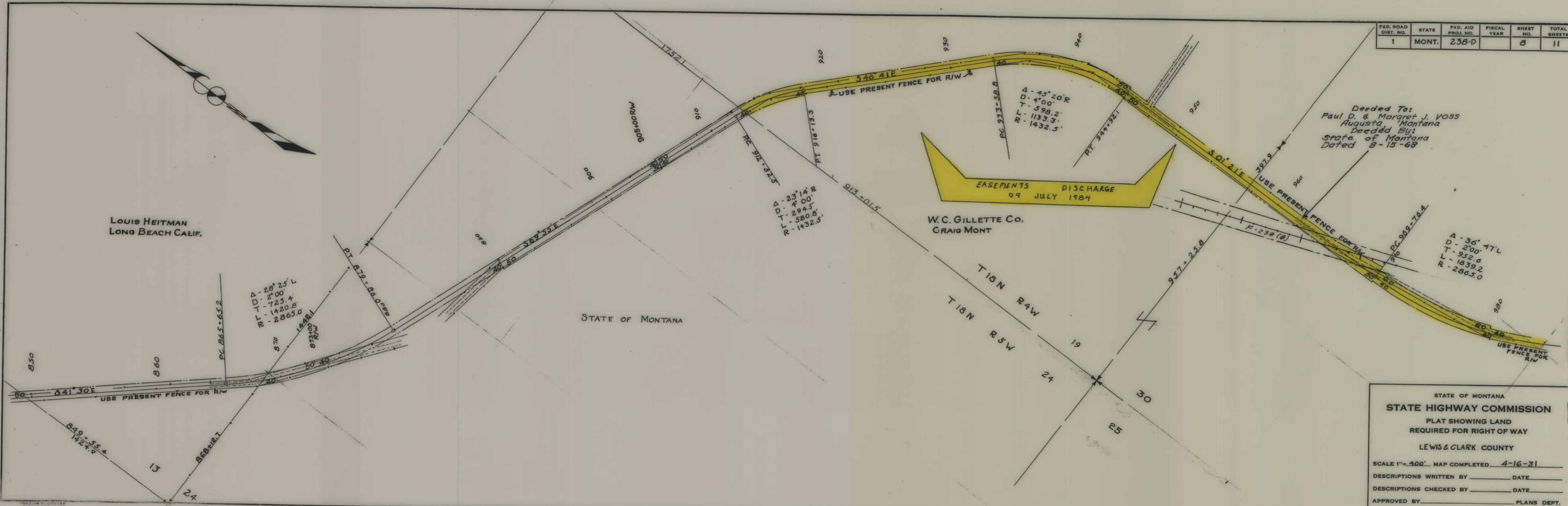
DESCRIPTIONS WRITTEN BY _____ DATE _____

DESCRIPTIONS CHECKED BY _____ DATE _____

APPROVED BY _____ PLANS DEPT.

APPROVED BY _____ R/W ENGINEER

| FED. ROAD DIST. NO. | STATE | FED. AID PROJ. NO. | FISCAL YEAR | SHEET NO. | TOTAL SHEETS |
|---------------------|-------|--------------------|-------------|-----------|--------------|
| 1 | MONT. | 238-D | | 8 | 11 |



Deeded To:
Paul D. & Margret J. VOSS
Augusta, Montana
Deeded By:
State of Montana
Dated 8-15-68

STATE OF MONTANA
STATE HIGHWAY COMMISSION
 PLAT SHOWING LAND
 REQUIRED FOR RIGHT OF WAY
 LEWIS & CLARK COUNTY

SCALE 1"=400' MAP COMPLETED 4-16-31

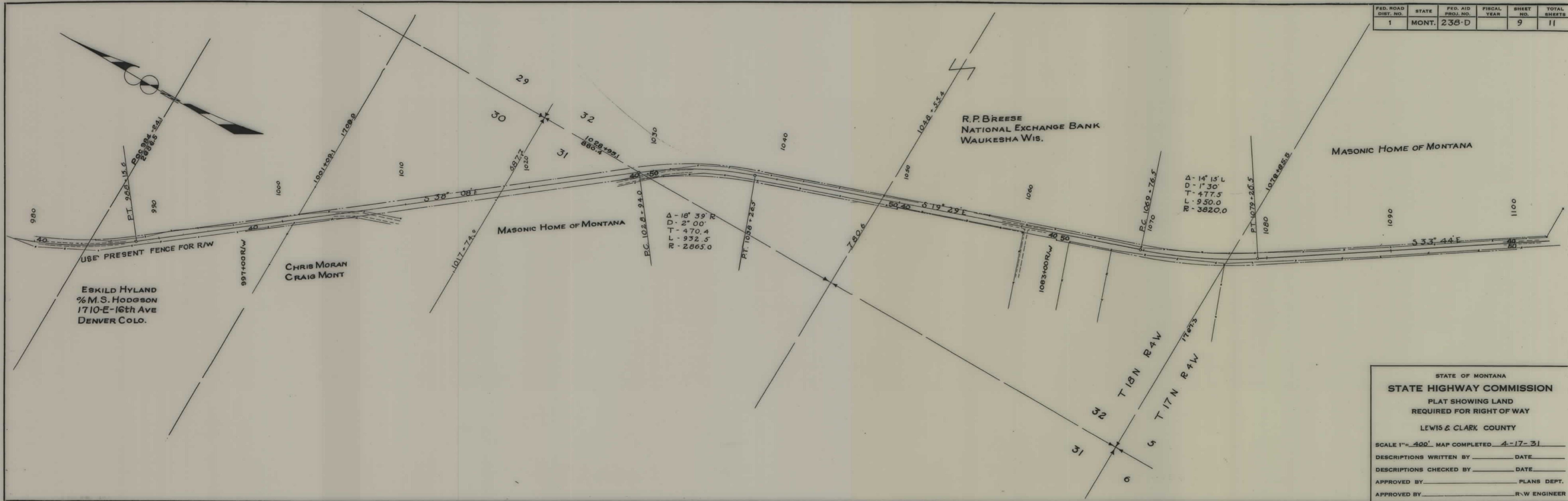
DESCRIPTIONS WRITTEN BY _____ DATE _____

DESCRIPTIONS CHECKED BY _____ DATE _____

APPROVED BY _____ PLANS DEPT.

APPROVED BY _____ R.W. ENGINEER

| FED. ROAD DIST. NO. | STATE | FED. AID PROJ. NO. | FISCAL YEAR | SHEET NO. | TOTAL SHEETS |
|---------------------|-------|--------------------|-------------|-----------|--------------|
| 1 | MONT. | 238-D | | 9 | 11 |



STATE OF MONTANA
STATE HIGHWAY COMMISSION
 PLAT SHOWING LAND
 REQUIRED FOR RIGHT OF WAY
 LEWIS & CLARK COUNTY

SCALE 1" = 400' MAP COMPLETED 4-17-31

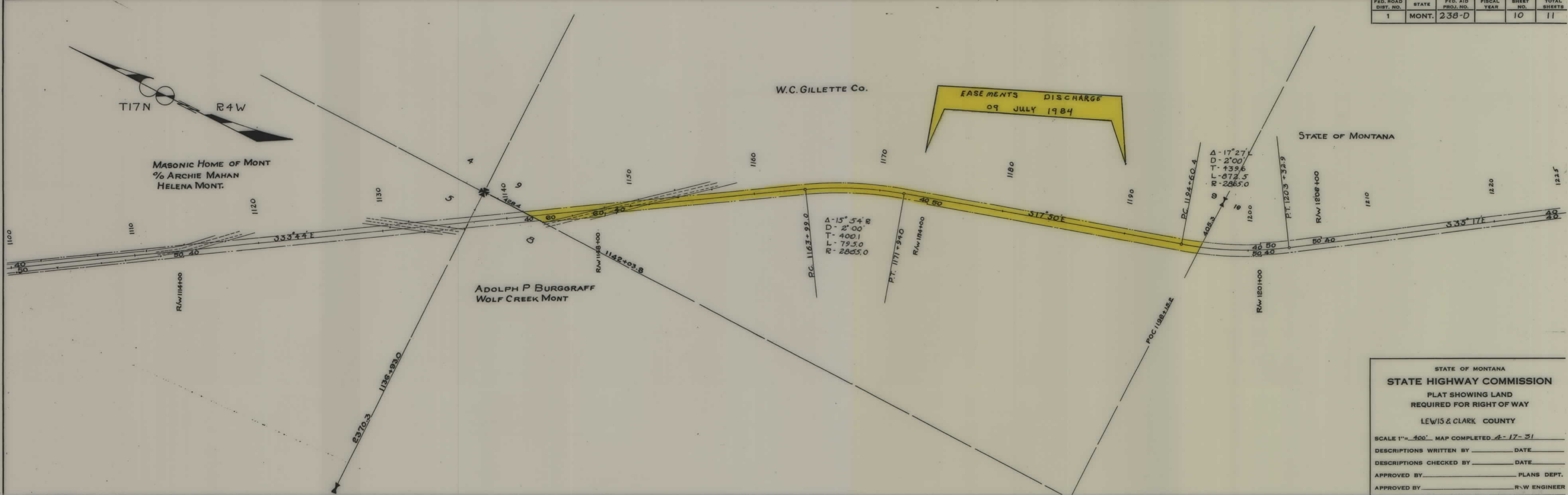
DESCRIPTIONS WRITTEN BY _____ DATE _____

DESCRIPTIONS CHECKED BY _____ DATE _____

APPROVED BY _____ PLANS DEPT.

APPROVED BY _____ R/W ENGINEER

| FED. ROAD DIST. NO. | STATE | FED. AID PROJ. NO. | FISCAL YEAR | SHEET NO. | TOTAL SHEETS |
|---------------------|-------|--------------------|-------------|-----------|--------------|
| 1 | MONT. | 238-D | | 10 | 11 |



STATE OF MONTANA
STATE HIGHWAY COMMISSION
 PLAT SHOWING LAND
 REQUIRED FOR RIGHT OF WAY
 LEWIS & CLARK COUNTY

SCALE 1" = 400' MAP COMPLETED 4-17-31

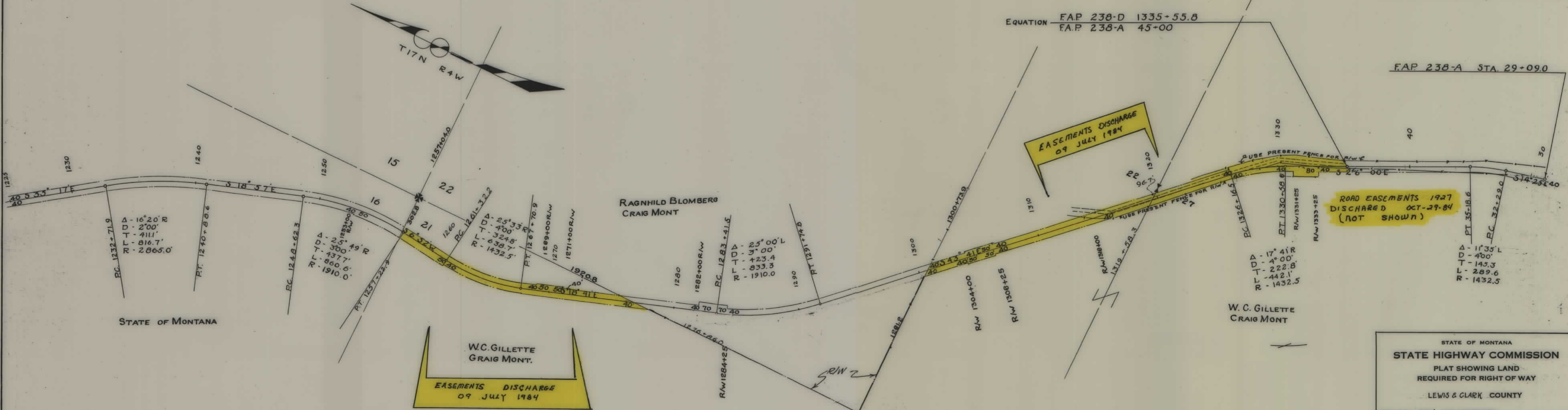
DESCRIPTIONS WRITTEN BY _____ DATE _____

DESCRIPTIONS CHECKED BY _____ DATE _____

APPROVED BY _____ PLANS DEPT.

APPROVED BY _____ R/W ENGINEER

| FED. ROAD DIST. NO. | STATE | FED. AID PROJ. NO. | FISCAL YEAR | SHEET NO. | TOTAL SHEETS |
|---------------------|-------|--------------------|-------------|-----------|--------------|
| 1 | MONT. | 238-D | | 11 | 11 |



EQUATION $\frac{FAP\ 238-D\ 1335+55.8}{FAP\ 238-A\ 45+00}$

FAP 238-A STA. 29+09.0

EASEMENTS DISCHARGE
09 JULY 1984

ROAD EASEMENTS 1927
DISCHARGED OCT-29-84
(NOT SHOWN)

W.C. GILLETTE
GRAIG MONT.
EASEMENTS DISCHARGE
09 JULY 1984

STATE OF MONTANA
STATE HIGHWAY COMMISSION
PLAT SHOWING LAND
REQUIRED FOR RIGHT OF WAY
LEWIS & CLARK COUNTY

SCALE 1" = 400' MAP COMPLETED _____
 DESCRIPTIONS WRITTEN BY _____ DATE _____
 DESCRIPTIONS CHECKED BY _____ DATE _____
 APPROVED BY _____ PLANS DEPT. _____
 APPROVED BY _____ R/W ENGINEER _____