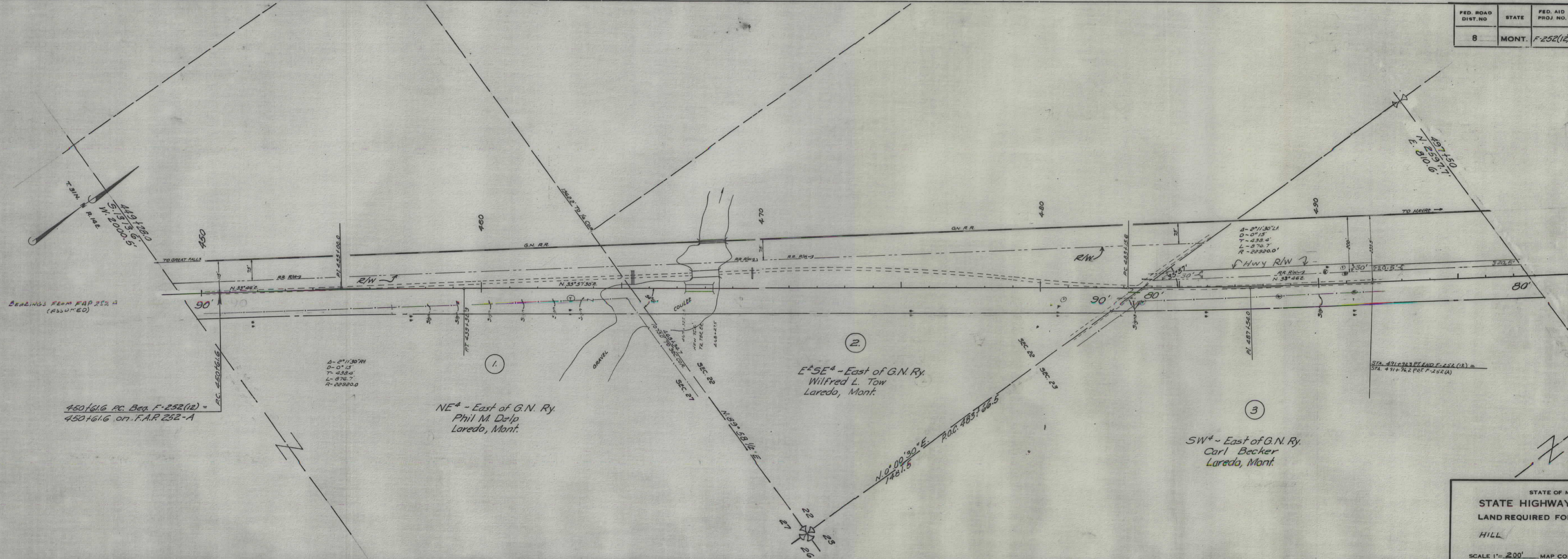


PLANS
NOT
TO
SCALE

FED. ROAD DIST. NO.	STATE	FED. AID PROJ. NO.	R/W NO.	SHEET NO.	TOTAL SHEETS
8	MONT.	F-252(12)	2252-12	1	1



BEARINGS FROM F.A.P. 252 (12)
(ASSUMED)

450+61.6 P.C. Beg. F-252(12) =
450+61.6 on F.A.P. 252-A

Δ-2°11'30" L
D-0'15"
T-438.4'
L-876.7'
R-22920.0'

1. NE 1/4 - East of G.N. Ry.
Phil M. Delp
Laredo, Mont.

2. E 1/2 SE 1/4 - East of G.N. Ry.
Wilfred L. Tow
Laredo, Mont.

3. SW 1/4 - East of G.N. Ry.
Carl Becker
Laredo, Mont.

STA. 491+92.2 P.L. END F-252(12) =
STA. 491+92.2 P.O.I. F-252(A)

STATE OF MONTANA
STATE HIGHWAY COMMISSION
LAND REQUIRED FOR RIGHT OF WAY
HILL COUNTY
SCALE 1"=200' MAP COMPLETED 3-2-54

DRAWING NUMBER

F 252(12) SHT 1 OF 1