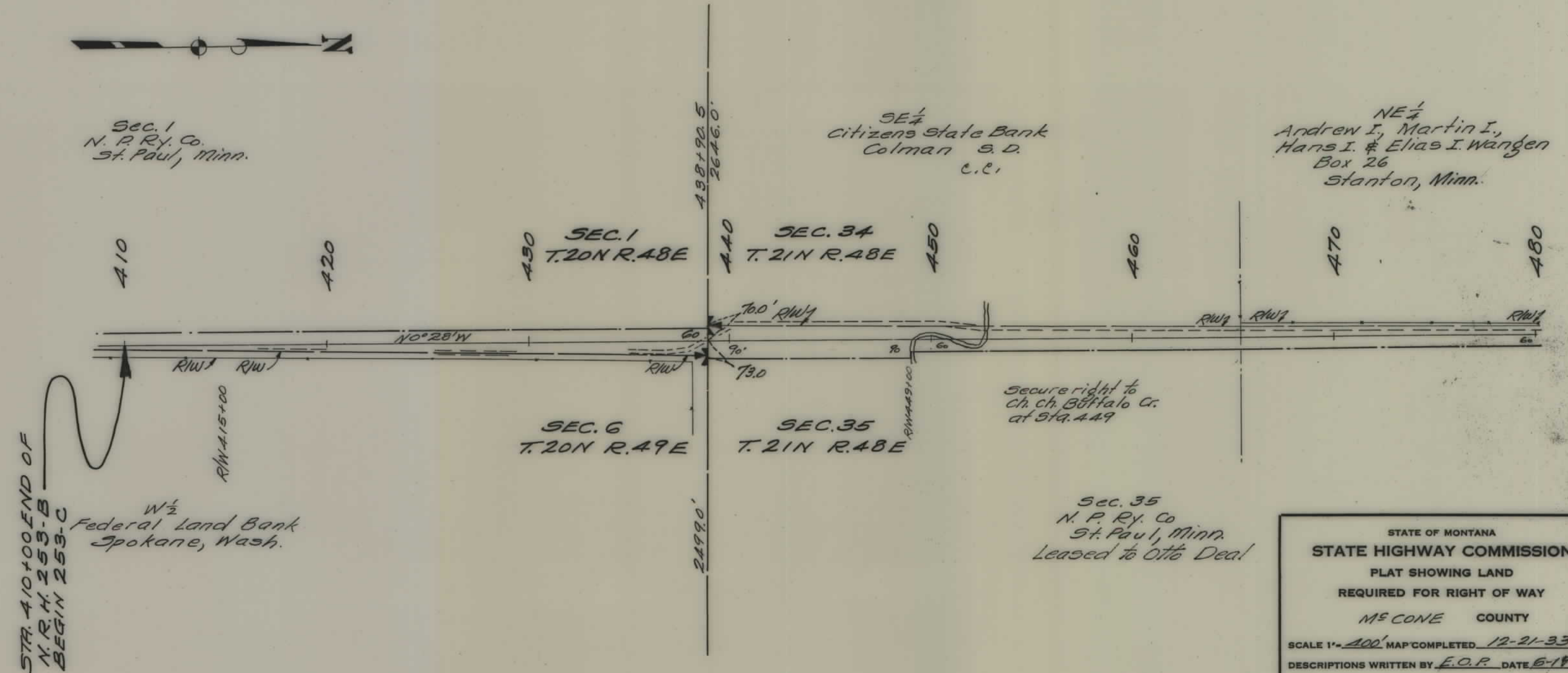


PLANS  
NOT  
TO  
SCALE

FED. ROAD DIST. NO.	STATE	FED. AID PROJ. NO.	FISCAL YEAR	SHEET NO.	TOTAL SHEETS
1	MONT.	253-C		1	7

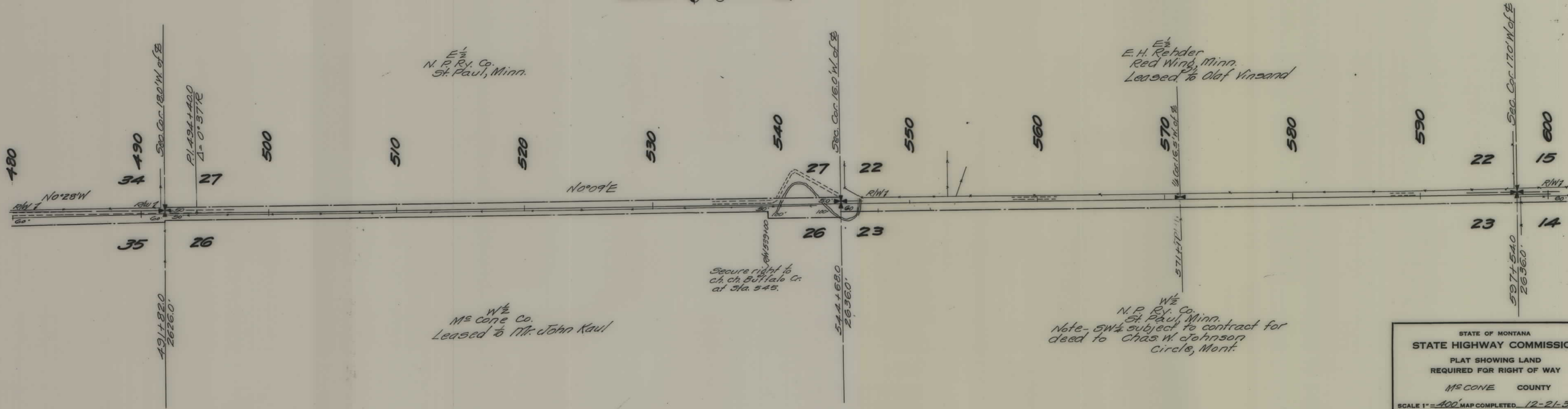


STATE OF MONTANA  
 STATE HIGHWAY COMMISSION  
 PLAT SHOWING LAND  
 REQUIRED FOR RIGHT OF WAY  
 M<sup>2</sup> CONE COUNTY

SCALE 1" = 400' MAP COMPLETED 12-21-33  
 DESCRIPTIONS WRITTEN BY E.O.P. DATE 6-18-34  
 DESCRIPTIONS CHECKED BY \_\_\_\_\_ DATE \_\_\_\_\_  
 APPROVED BY \_\_\_\_\_ PLANS DEPT.  
 APPROVED BY \_\_\_\_\_ R/W ENGINEER

FED. ROAD DIST. NO.	STATE	FED. AID PROJ. NO.	FISCAL YEAR	SHEET NO.	TOTAL SHEETS
1	MONT.	253-C		2	7

T.21N R.48E



*E 1/2  
N. P. Ry. Co.  
St. Paul, Minn.*

*E 1/2  
E. H. Rehder  
Red Wing, Minn.  
Leased to Olaf Vinzand*

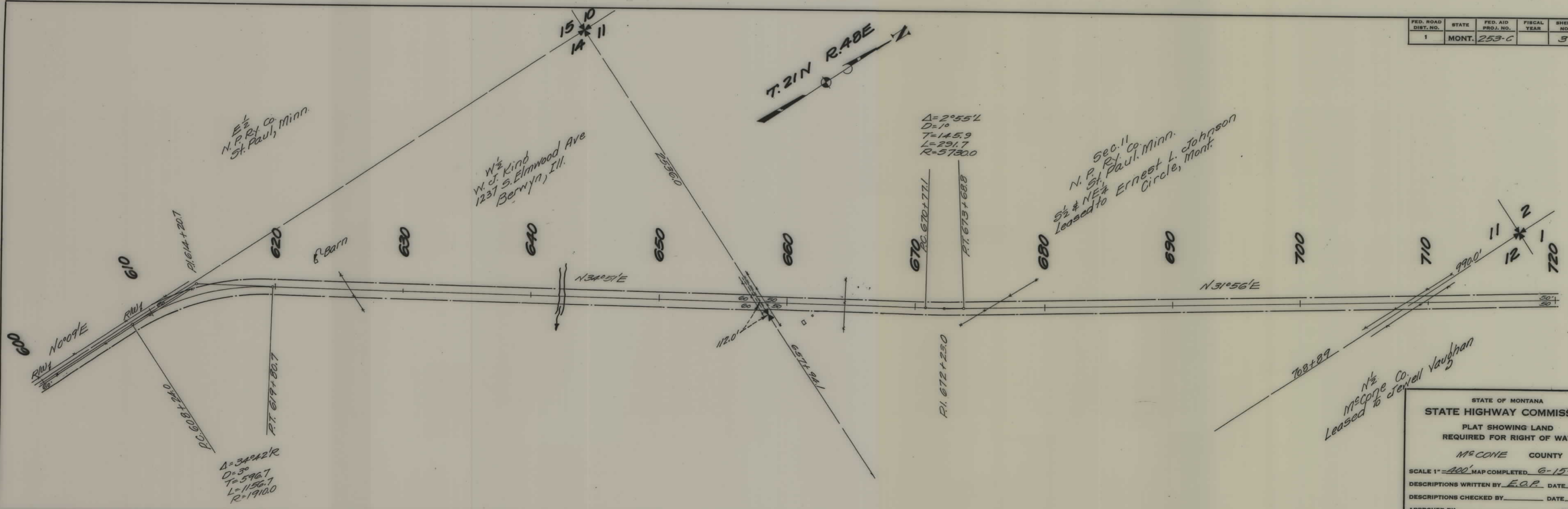
*W 1/2  
M.C. Cone Co.  
Leased to Mr. John Kaul*

*Secure right to  
ch. ch. Buffalo Cr.  
at Sta. 545.*

*W 1/2  
N. P. Ry. Co.  
St. Paul, Minn.  
Note - SW 1/4 subject to contract for  
deed to Chas. W. Johnson  
Circle, Mont.*

STATE OF MONTANA  
STATE HIGHWAY COMMISSION  
PLAT SHOWING LAND  
REQUIRED FOR RIGHT OF WAY  
MCCONE COUNTY  
SCALE 1" = 400' MAP COMPLETED 12-21-33  
DESCRIPTIONS WRITTEN BY E.O.P. DATE 12-23-33  
DESCRIPTIONS CHECKED BY T.P.O. DATE 12-26-33  
APPROVED BY \_\_\_\_\_ PLANS DEPT.  
APPROVED BY \_\_\_\_\_ R/W ENGINEER

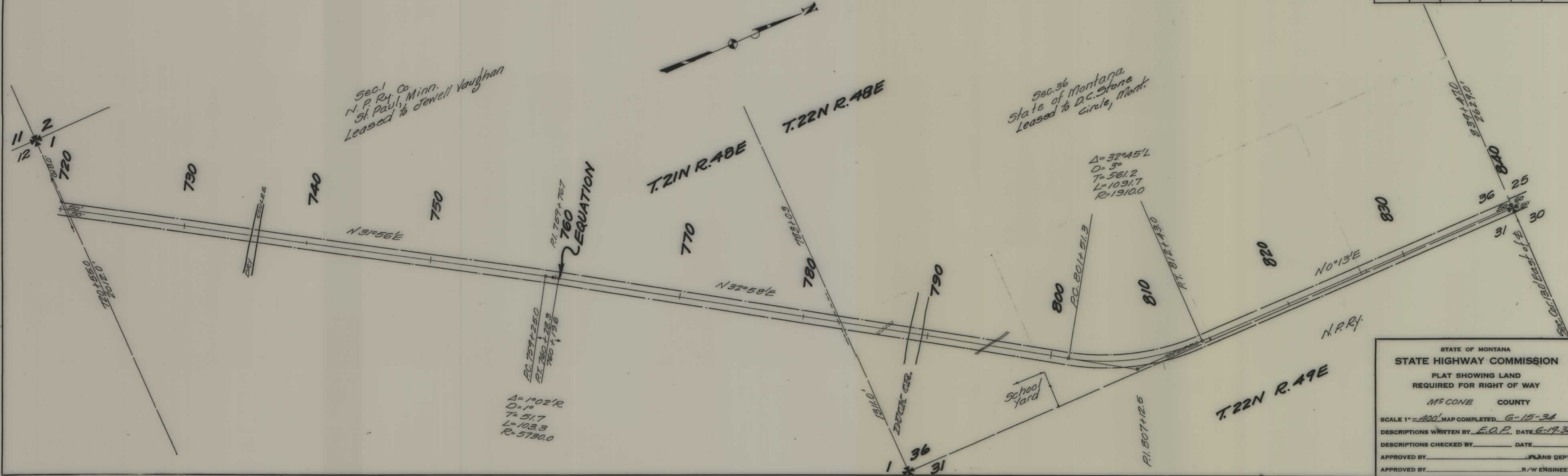
FED. ROAD DIST. NO.	STATE	FED. AID PROJ. NO.	FISCAL YEAR	SHEET NO.	TOTAL SHEETS
1	MONT.	253-C		3	7



STATE OF MONTANA  
**STATE HIGHWAY COMMISSION**  
 PLAT SHOWING LAND  
 REQUIRED FOR RIGHT OF WAY  
 M<sup>C</sup>ONE COUNTY

SCALE 1" = 400' MAP COMPLETED 6-15-34  
 DESCRIPTIONS WRITTEN BY E.O.P. DATE 6-19-34  
 DESCRIPTIONS CHECKED BY \_\_\_\_\_ DATE \_\_\_\_\_  
 APPROVED BY \_\_\_\_\_ PLANS DEPT.  
 APPROVED BY \_\_\_\_\_ R/W ENGINEER

FED. ROAD DIST. NO.	STATE	FED. AID PROJ. NO.	FISCAL YEAR	SHEET NO.	TOTAL SHEETS
1	MONT.	253-C		4	7

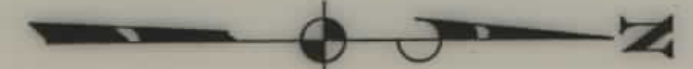


STATE OF MONTANA  
**STATE HIGHWAY COMMISSION**  
 PLAT SHOWING LAND  
 REQUIRED FOR RIGHT OF WAY  
 McCONE COUNTY

SCALE 1" = 400' MAP COMPLETED 6-15-34  
 DESCRIPTIONS WRITTEN BY E.O.P. DATE 6-19-34  
 DESCRIPTIONS CHECKED BY \_\_\_\_\_ DATE \_\_\_\_\_  
 APPROVED BY \_\_\_\_\_ PLANS DEPT.  
 APPROVED BY \_\_\_\_\_ R/W ENGINEER

FED. ROAD DIST. NO.	STATE	FED. AID PROJ. NO.	FISCAL YEAR	SHEET NO.	TOTAL SHEETS
1	MONT.	253-C		5	7

T. 22N R. 48E

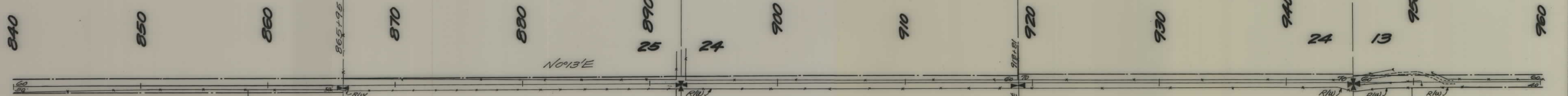


E 1/2  
N.P.R.I. Co.  
St. Paul, Minn.  
NE 1/4 Leased to Lage J. Johnson

SE 1/4  
Gerhard E. Johnson  
Fergus Falls, Minn.  
Leased to Lage J. Johnson

NE 1/4  
Lage J. Johnson  
Circle, Mont.

N.P.R.I.  
SE 1/4 Leased to Lage J. Johnson



SW 1/4  
Jay B. Shirk  
% Deer-Webber Co.  
Minneapolis, Minn.  
Leased to C.B. Stuart.

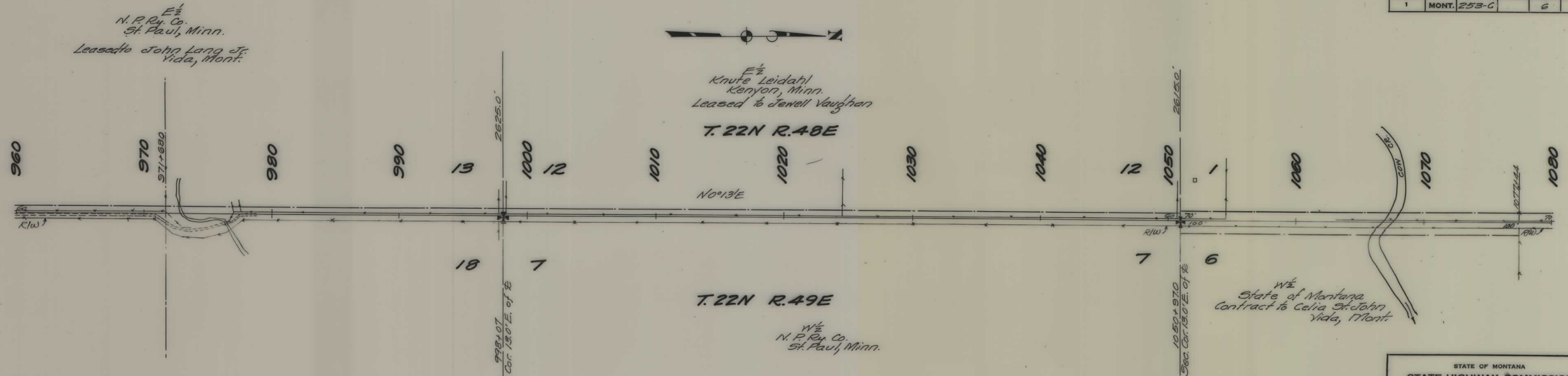
NW 1/4  
Louise L. Stuart  
Circle, Mont.

W 1/2  
N.P.R.I. Co.  
St. Paul, Minn.

T. 22N R. 49E

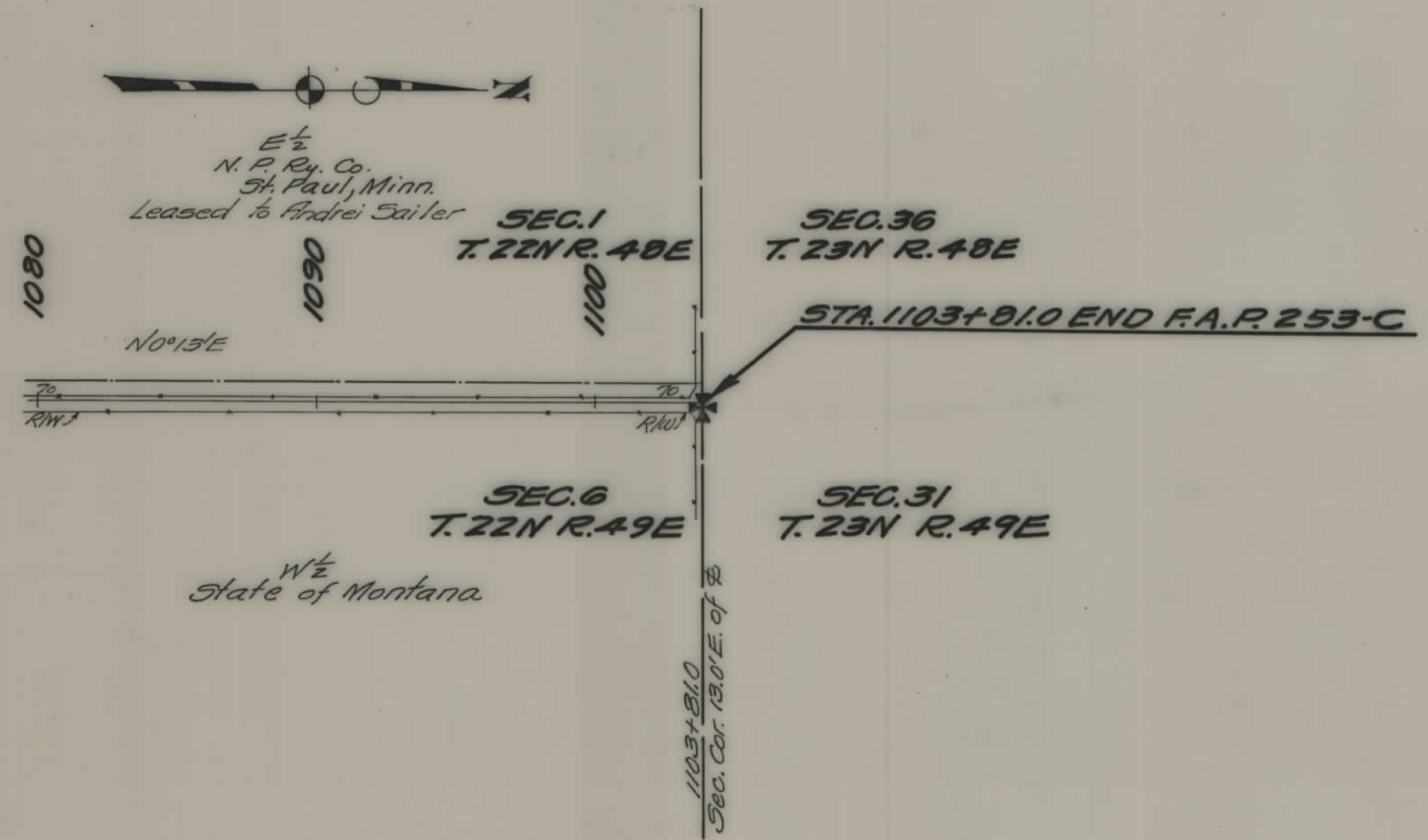
STATE OF MONTANA  
**STATE HIGHWAY COMMISSION**  
 PLAT SHOWING LAND  
 REQUIRED FOR RIGHT OF WAY  
 M<sup>o</sup> CONE COUNTY  
 SCALE 1"=400' MAP COMPLETED 6-15-34  
 DESCRIPTIONS WRITTEN BY E.O.P. DATE 6-20-34  
 DESCRIPTIONS CHECKED BY \_\_\_\_\_ DATE \_\_\_\_\_  
 APPROVED BY \_\_\_\_\_ PLANS DEPT.  
 APPROVED BY \_\_\_\_\_ R/W ENGINEER

FED. ROAD DIST. NO.	STATE	FED. AID PROJ. NO.	FISCAL YEAR	SHEET NO.	TOTAL SHEETS
1	MONT.	253-C		6	7



STATE OF MONTANA  
 STATE HIGHWAY COMMISSION  
 PLAT SHOWING LAND  
 REQUIRED FOR RIGHT OF WAY  
 McCONE COUNTY  
 SCALE 1" = 400' MAP COMPLETED 6-15-34  
 DESCRIPTIONS WRITTEN BY E.O.P. DATE 6-20-34  
 DESCRIPTIONS CHECKED BY \_\_\_\_\_ DATE \_\_\_\_\_  
 APPROVED BY \_\_\_\_\_ PLANS DEPT.  
 APPROVED BY \_\_\_\_\_ R/W ENGINEER

FED. ROAD DIST. NO.	STATE	FED. AID PROJ. NO.	FISCAL YEAR	SHEET NO.	TOTAL SHEETS
1	MONT.	253-C		7	7



STATE OF MONTANA  
 STATE HIGHWAY COMMISSION  
 PLAT SHOWING LAND  
 REQUIRED FOR RIGHT OF WAY  
 M'CONE COUNTY

SCALE 1" = 400' MAP COMPLETED 6-15-34  
 DESCRIPTIONS WRITTEN BY E.O.P. DATE 6-20-34  
 DESCRIPTIONS CHECKED BY \_\_\_\_\_ DATE \_\_\_\_\_  
 APPROVED BY \_\_\_\_\_ PLANS DEPT.  
 APPROVED BY \_\_\_\_\_ R/W ENGINEER