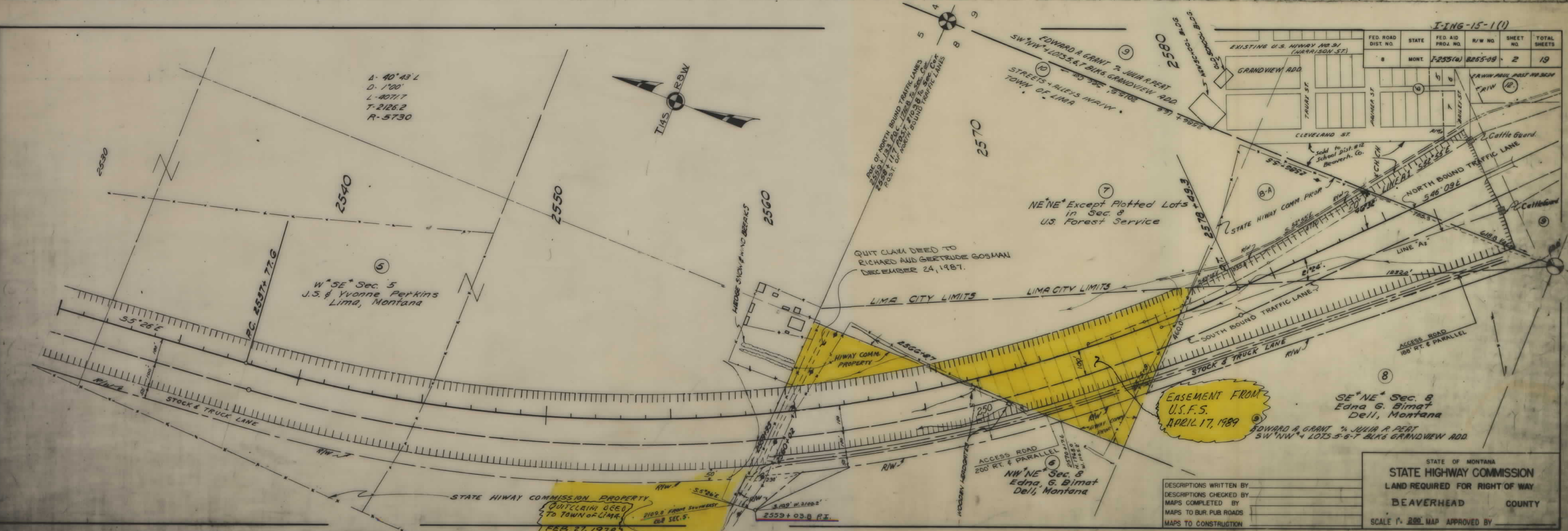
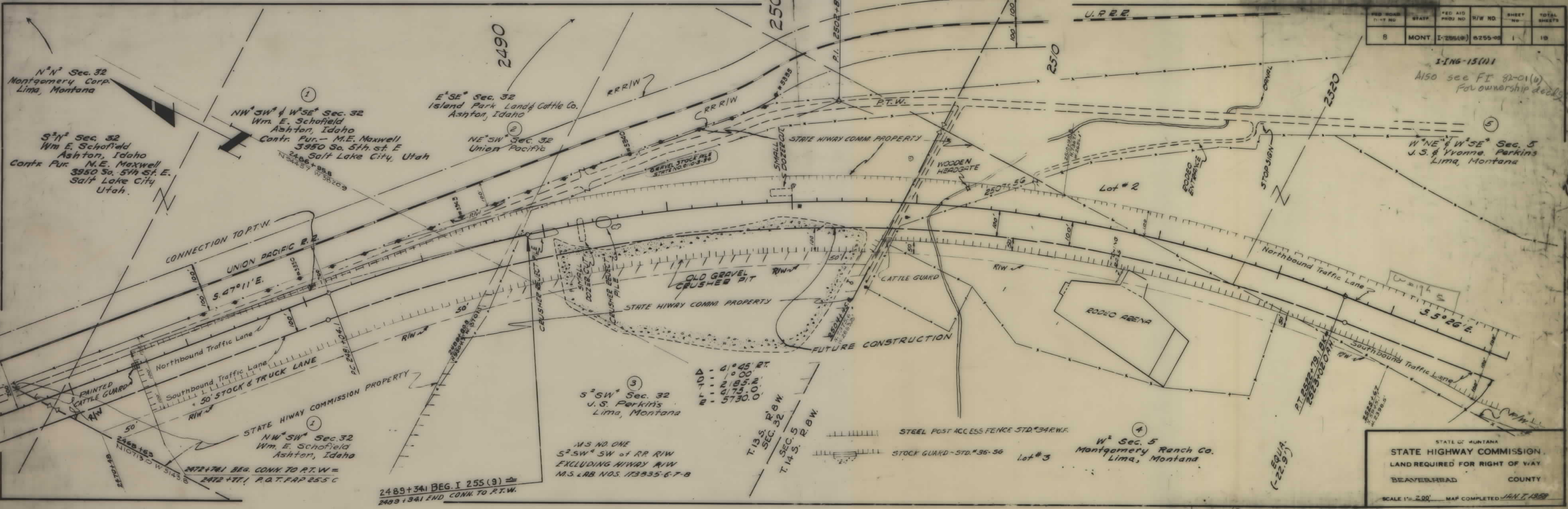
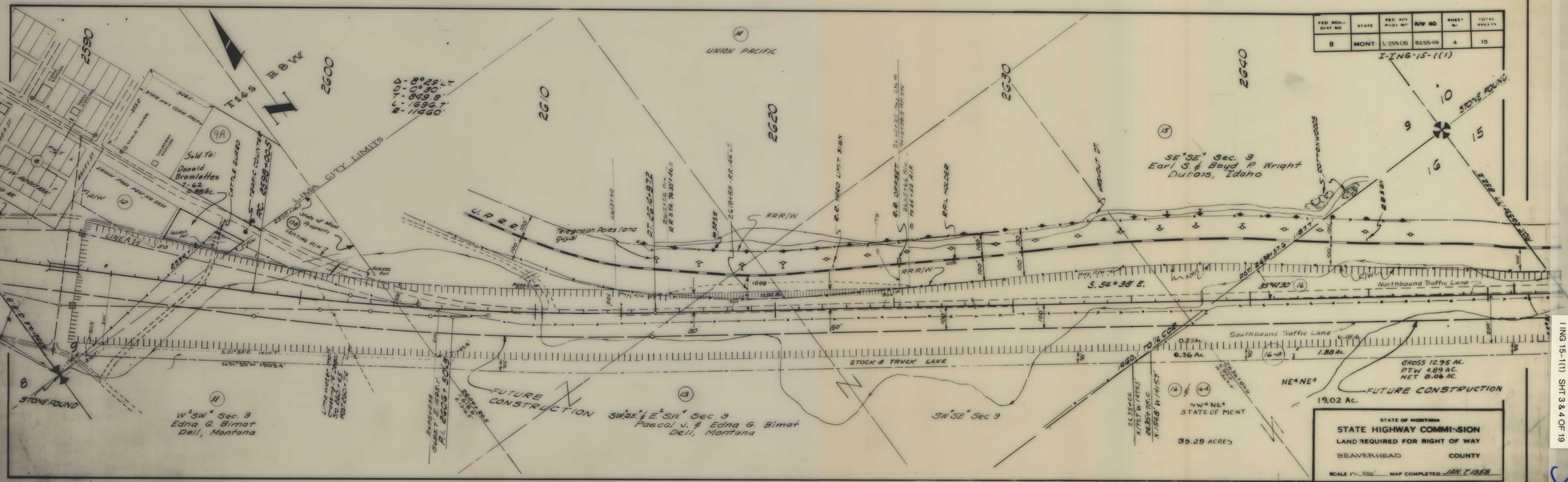
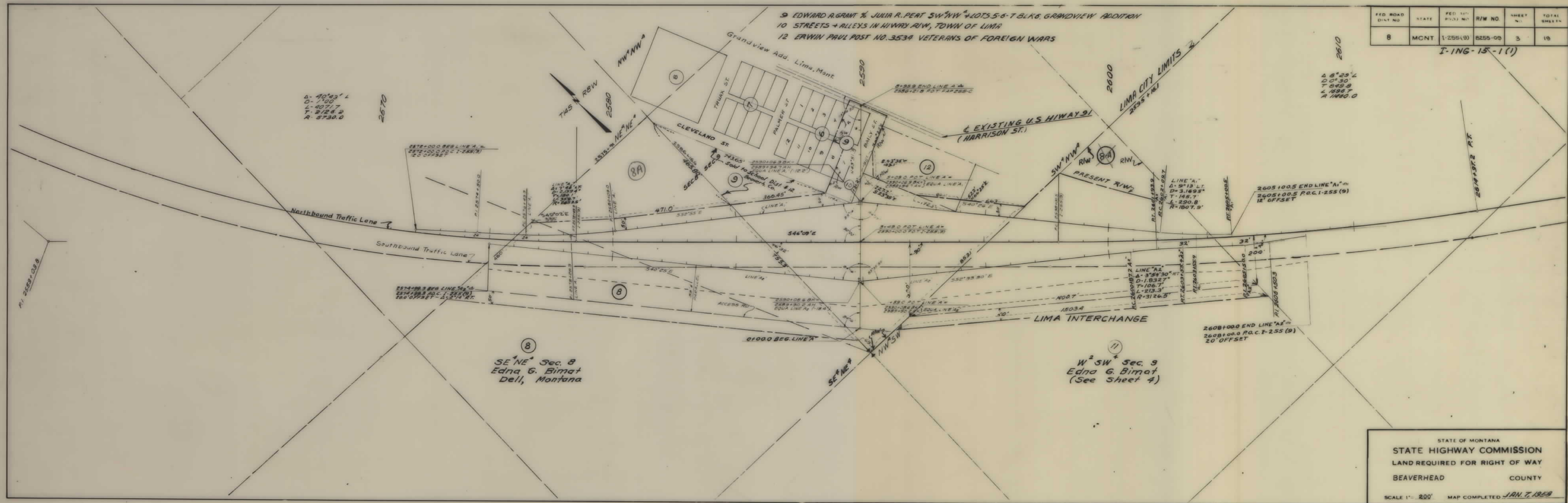
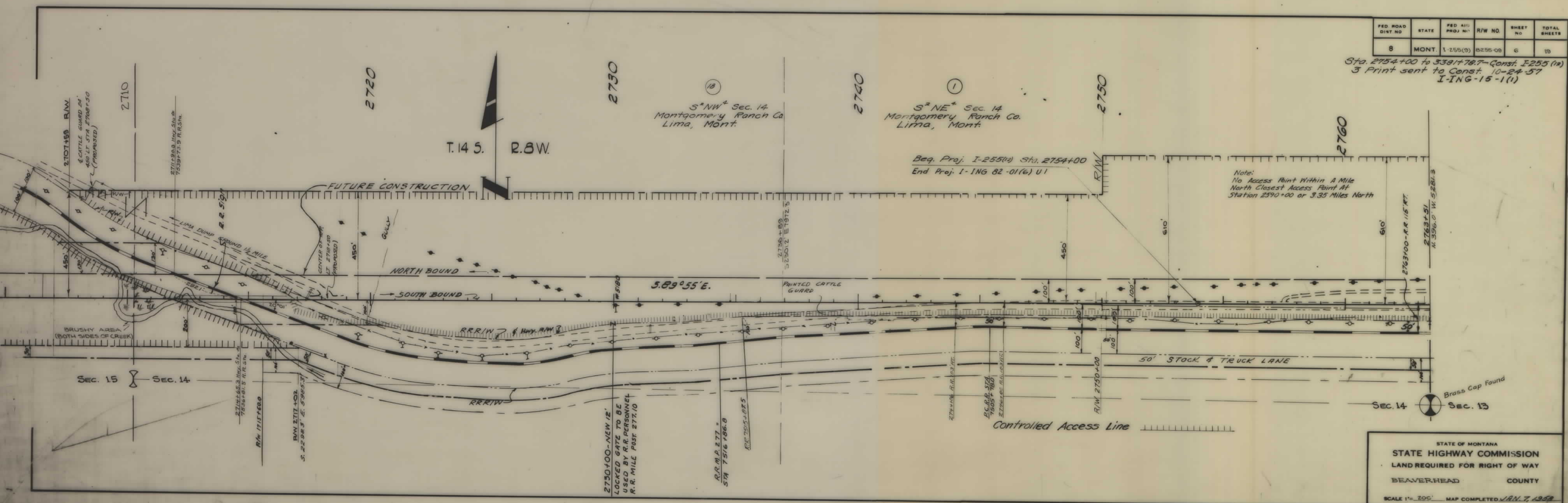
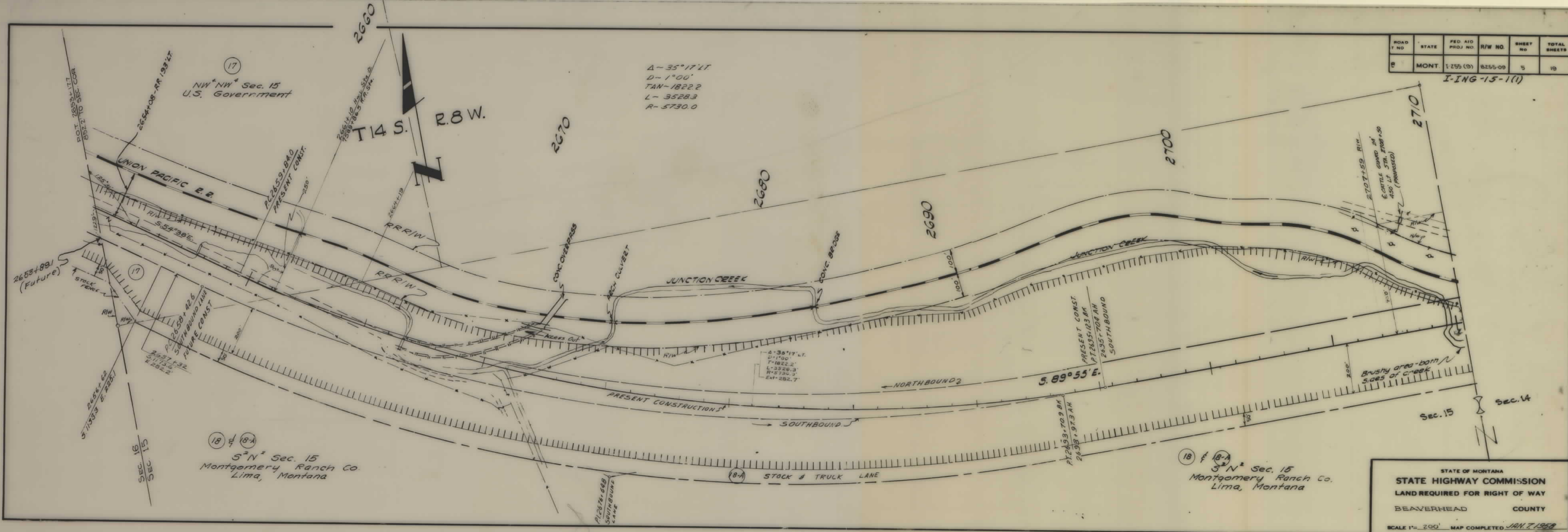


PLANS
NOT
TO
SCALE

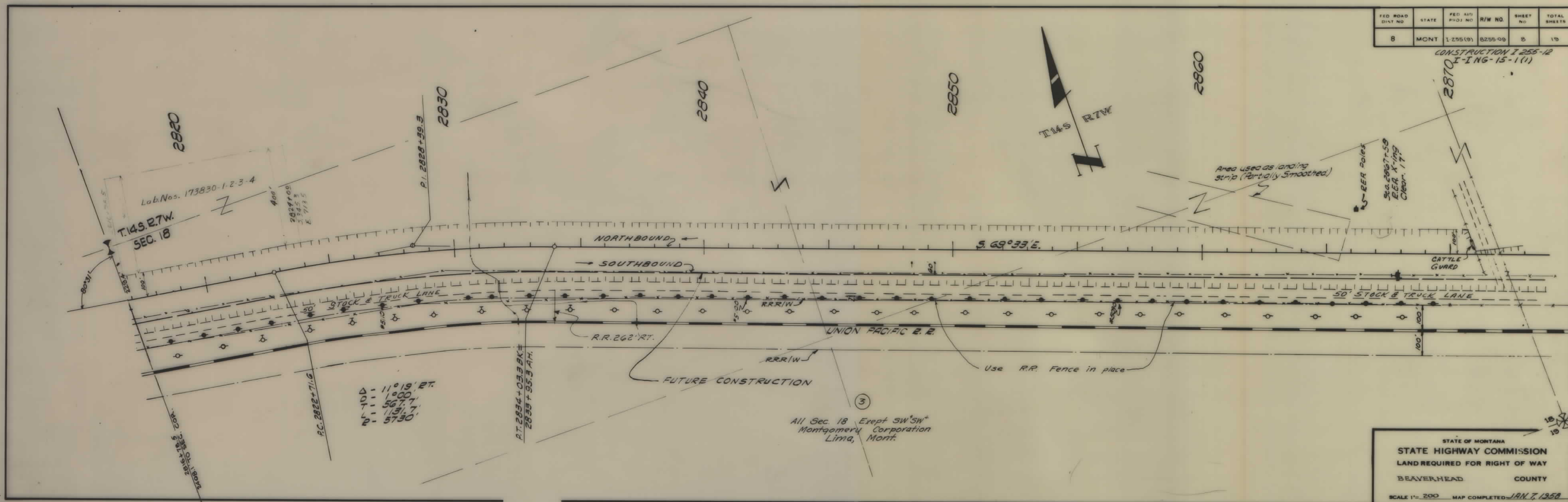
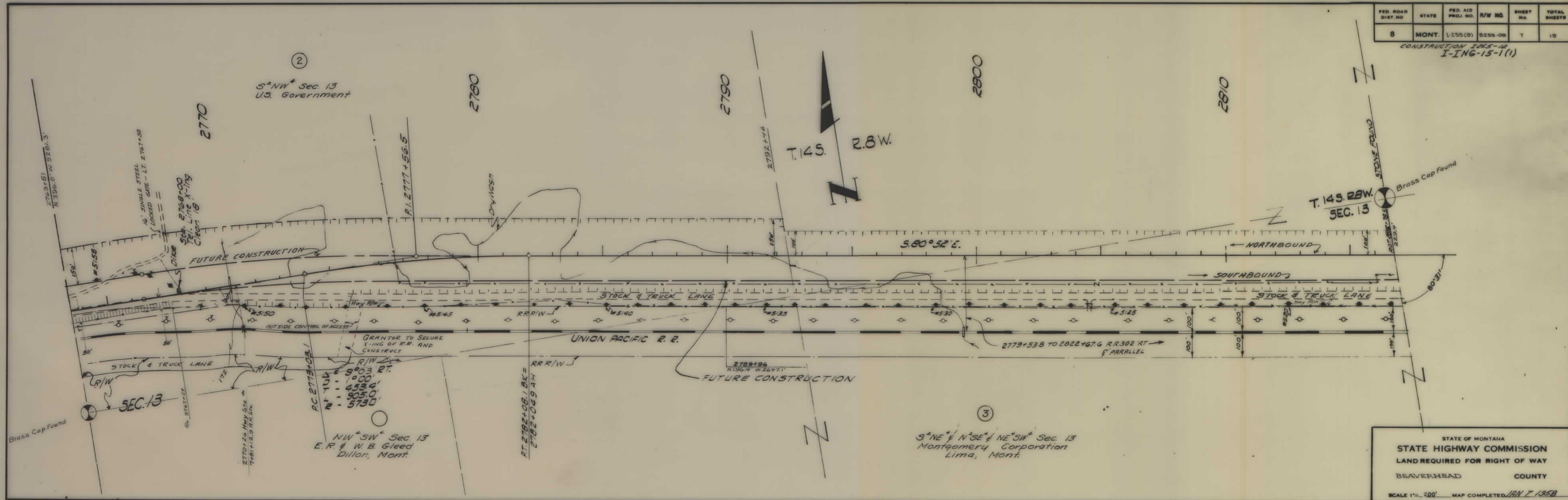




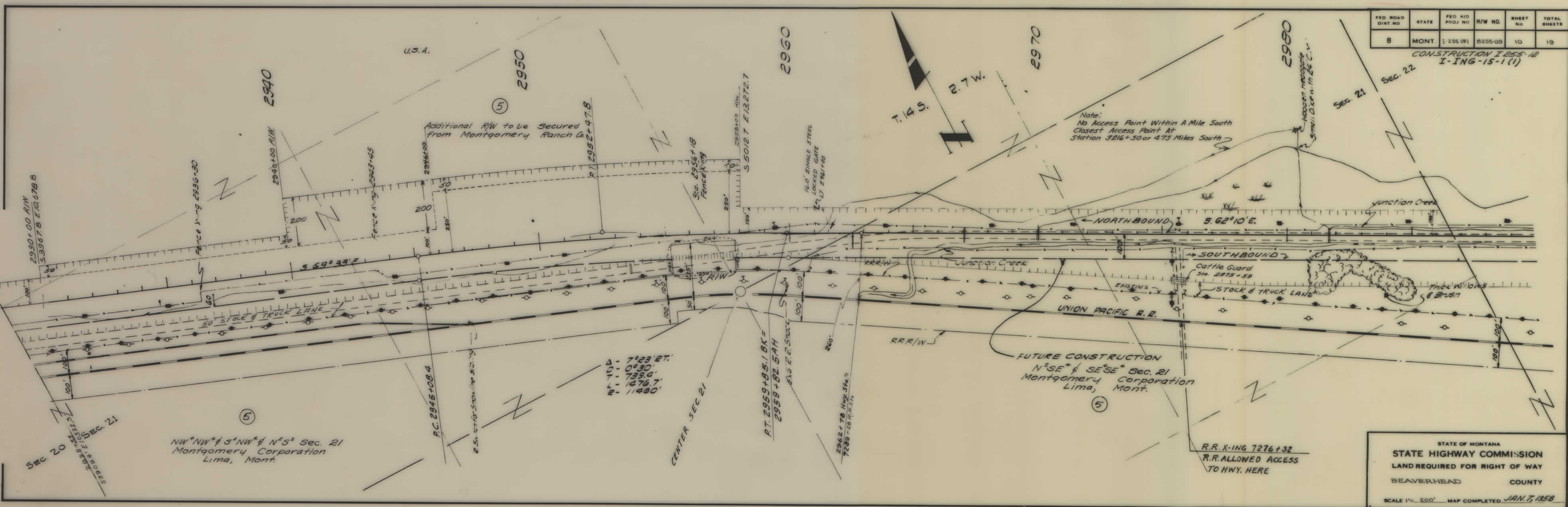
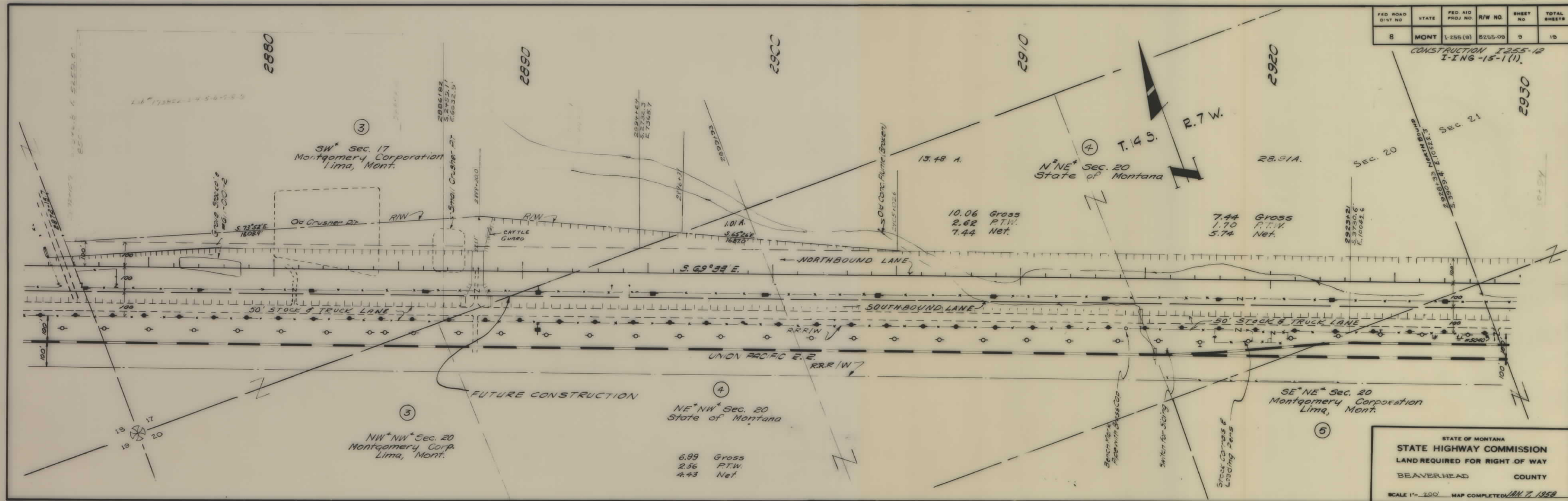
I-ING-15-1(1) SH 3.4 OF 19

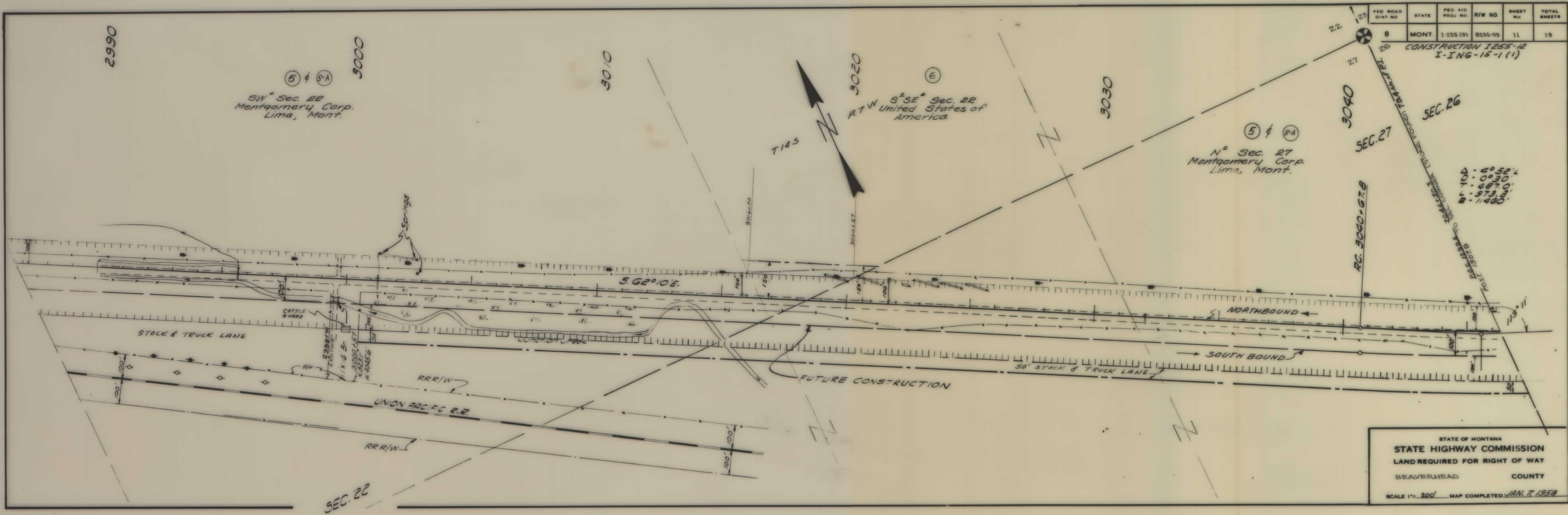


I-ING-15-1(1) SH 5 & 6 OF 19

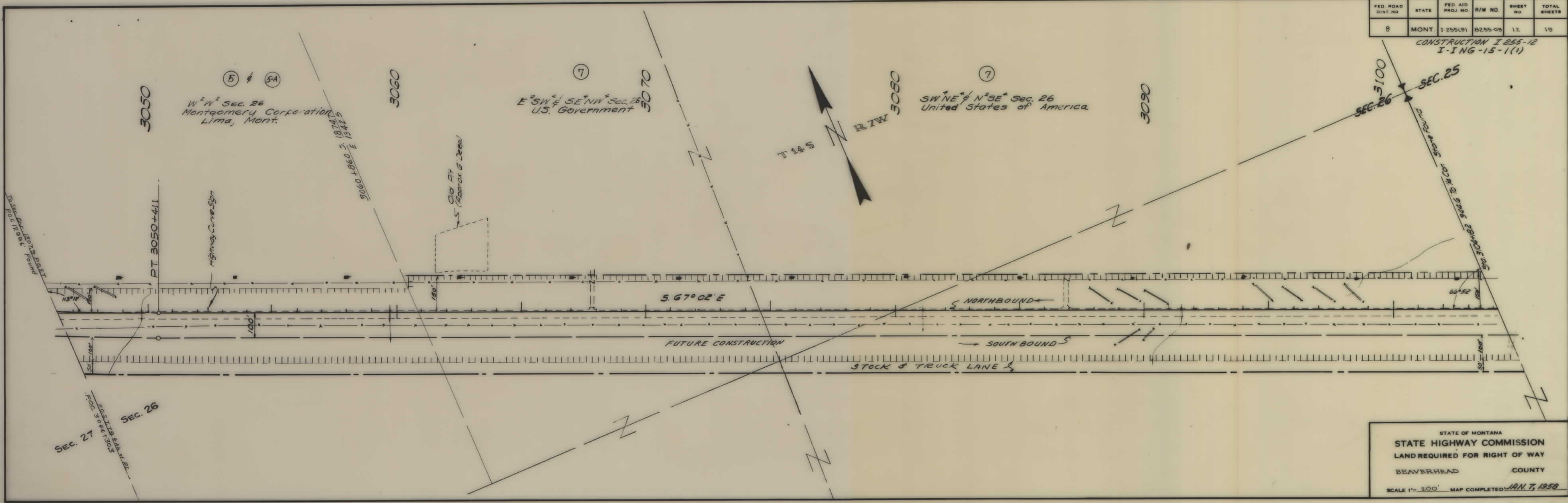


I-ING-15-1(1) SHT 7 & 8 OF 19

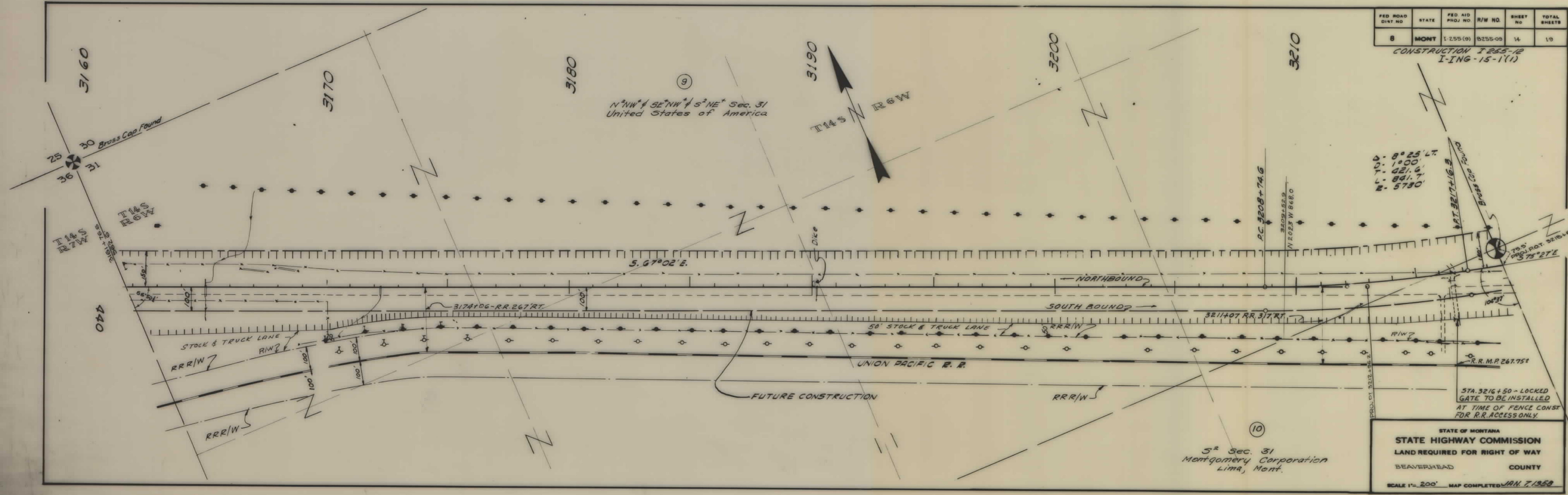
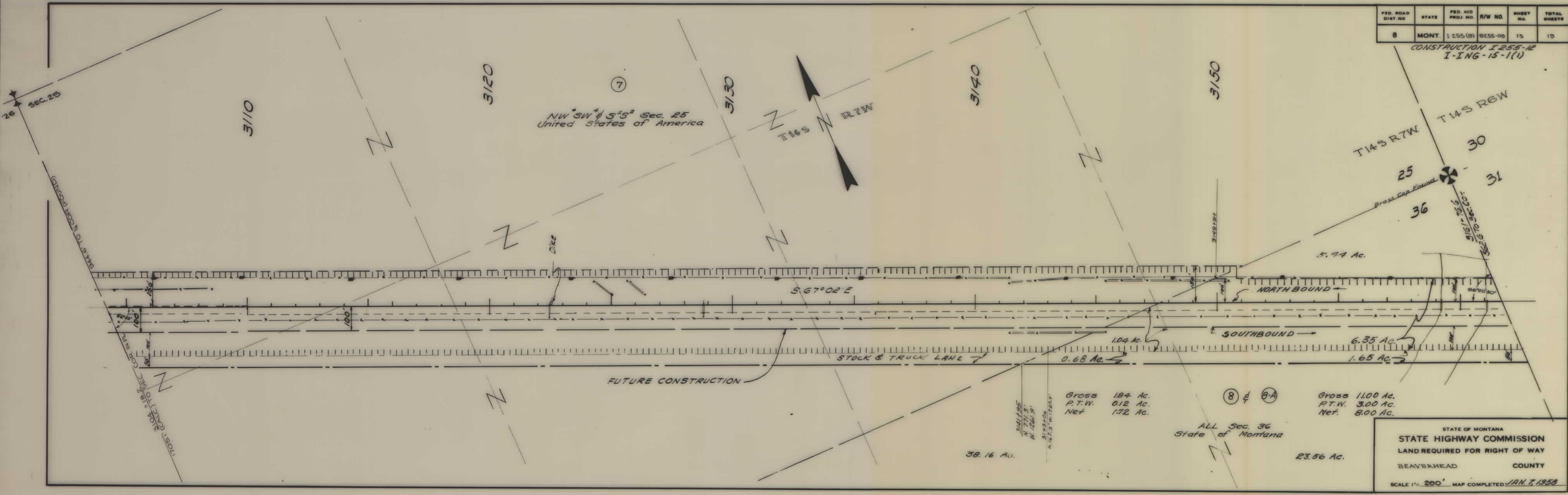




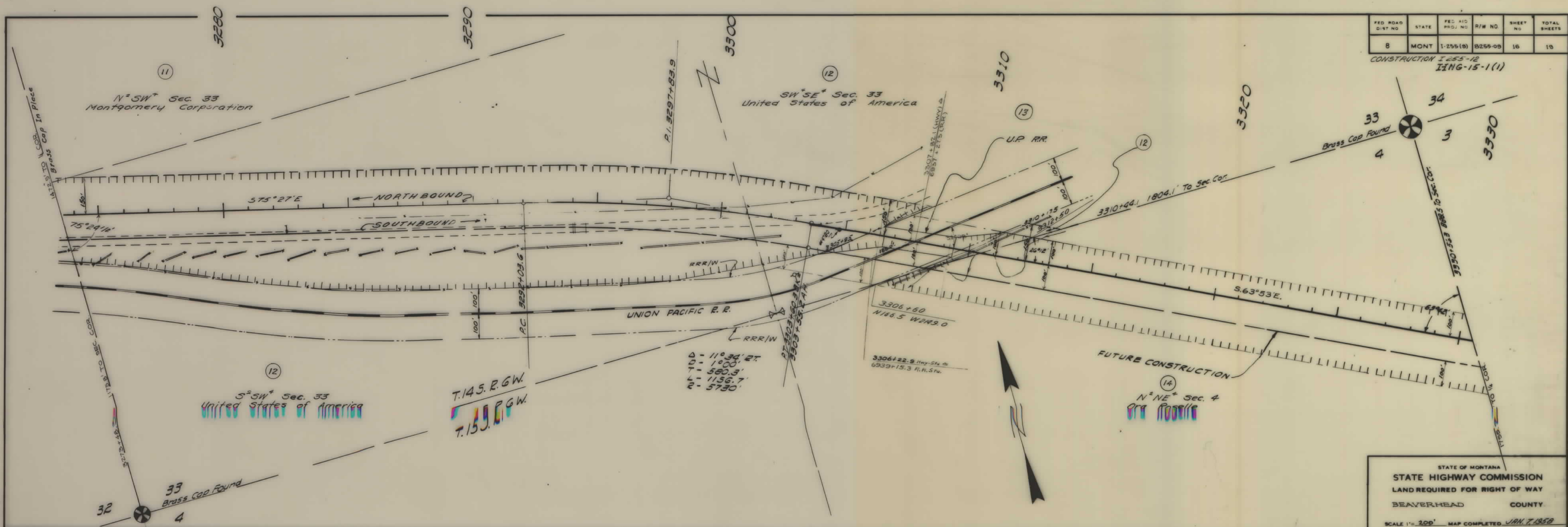
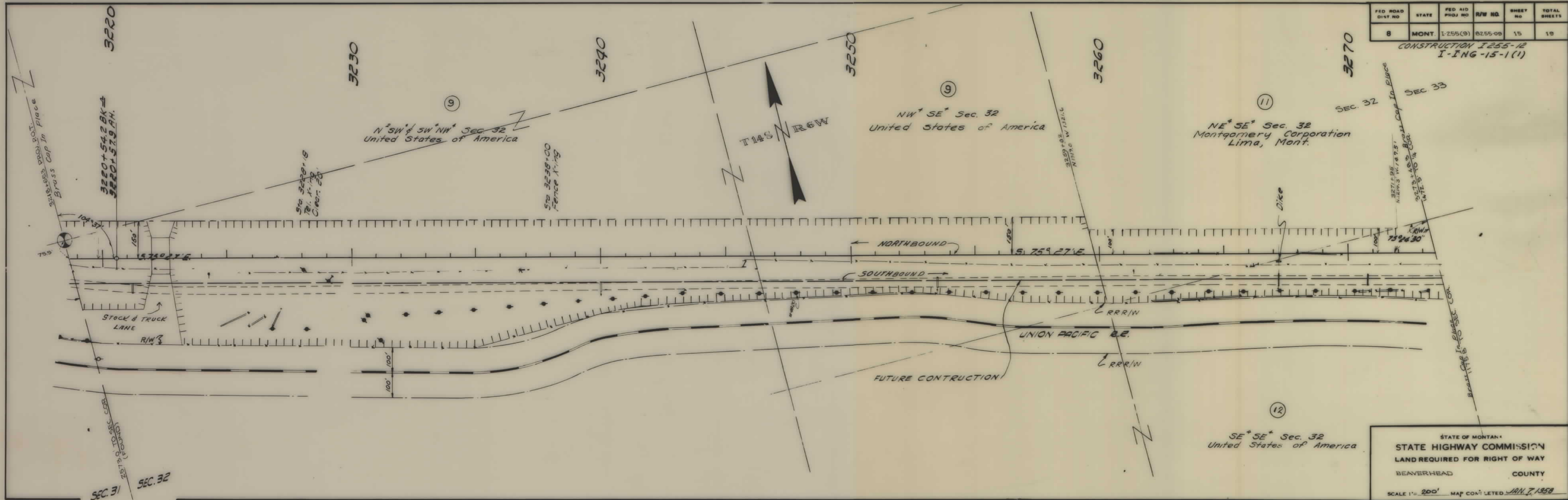
STATE OF MONTANA
 STATE HIGHWAY COMMISSION
 LAND REQUIRED FOR RIGHT OF WAY
 BEAVERHEAD COUNTY
 SCALE 1" = 200' MAP COMPLETED JAN. 7, 1958

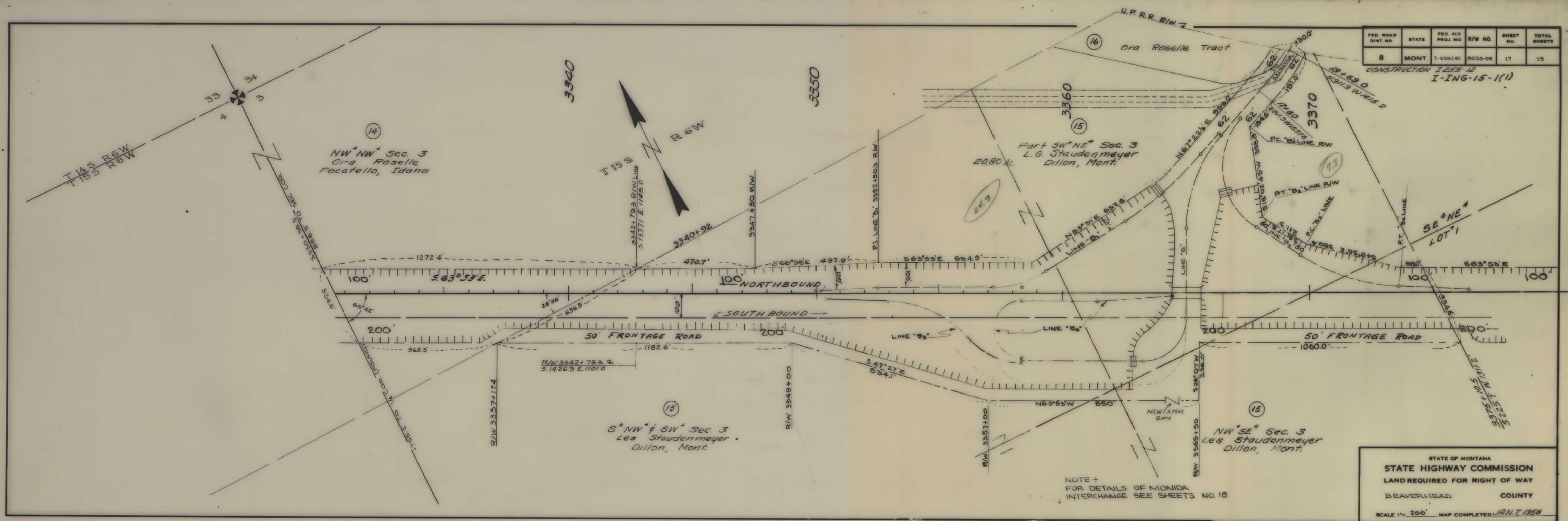


STATE OF MONTANA
 STATE HIGHWAY COMMISSION
 LAND REQUIRED FOR RIGHT OF WAY
 BEAVERHEAD COUNTY
 SCALE 1" = 200' MAP COMPLETED JAN. 7, 1958

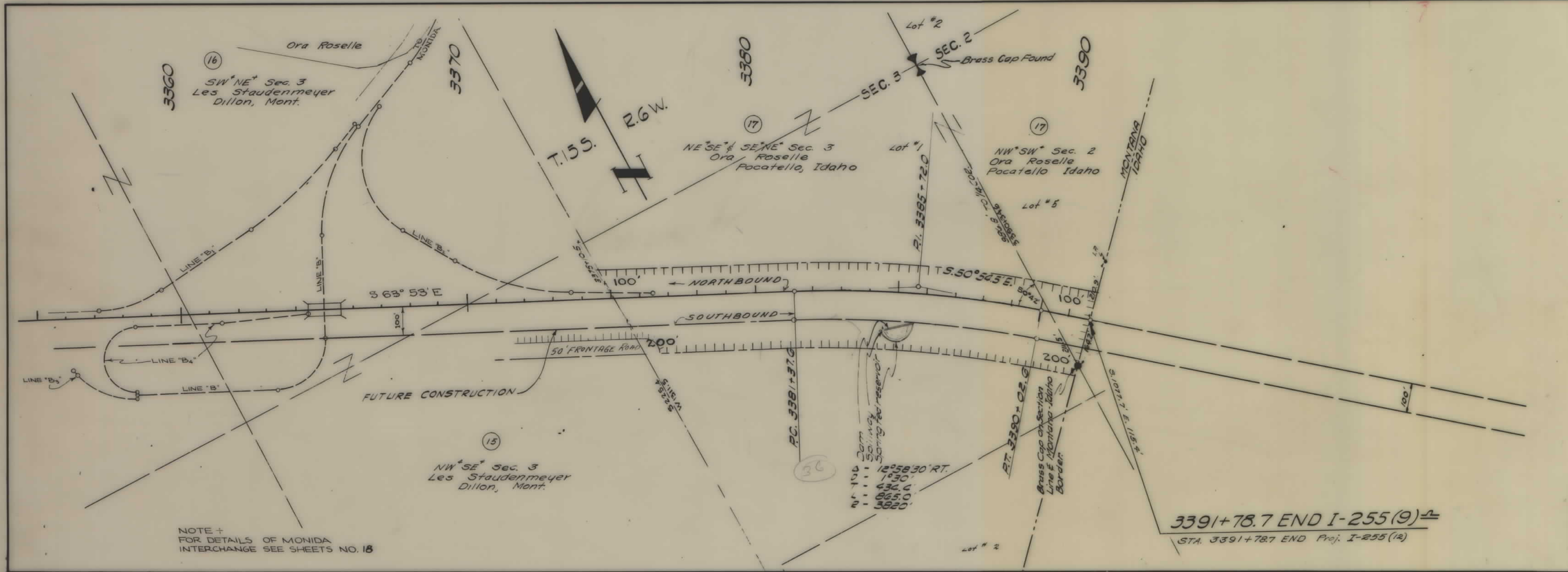


I-ING-15-1(1) SHT 13 & 14 OF 19





I-ING-15-1(1) SH1 17 & 18 OF 19



FED. ROAD DIST. NO.	STATE	FED. AID PROJ. NO.	R/W NO.	SHEET NO.	TOTAL SHEETS
8	MONT.	I-255(9)	B255-09	19	19

CONSTRUCTION I-255-12
I-ING-15-1(1)

STATE OF MONTANA
STATE HIGHWAY COMMISSION
LAND REQUIRED FOR RIGHT OF WAY
BEAVERHEAD COUNTY
SCALE 1" = 200' MAP COMPLETED JAN. 7, 1958