

PLANS
NOT
TO
SCALE

FED. ROAD DIST. NO.	STATE	FED. AID PROJ. NO.	R/W	SHEET NO.	TOTAL SHEETS
8	MONT.	256(18)	1756(18)	1	6

Construction Contract Awarded June 17, 1953

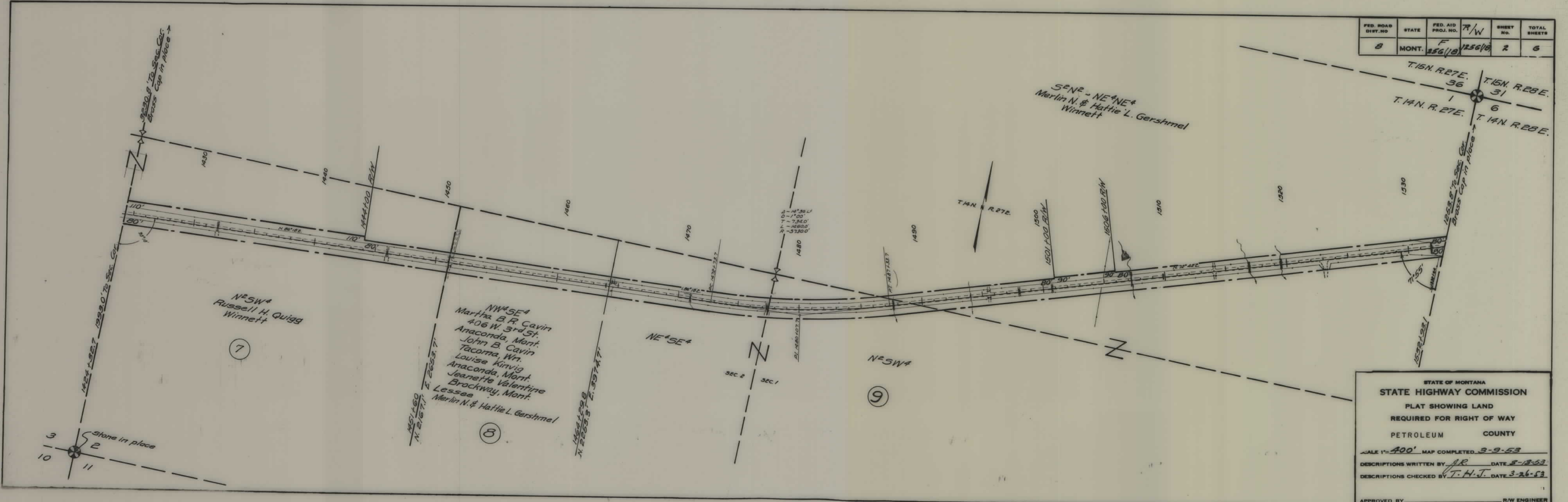


STATE OF MONTANA
 STATE HIGHWAY COMMISSION
 PLAT SHOWING LAND
 REQUIRED FOR RIGHT OF WAY
 PETROLEUM COUNTY

SCALE 1" = 400' MAP COMPLETED 3-7-53
 DESCRIPTIONS WRITTEN BY J.R. DATE 5-13-53
 DESCRIPTIONS CHECKED BY T.H.J. DATE 3-26-53

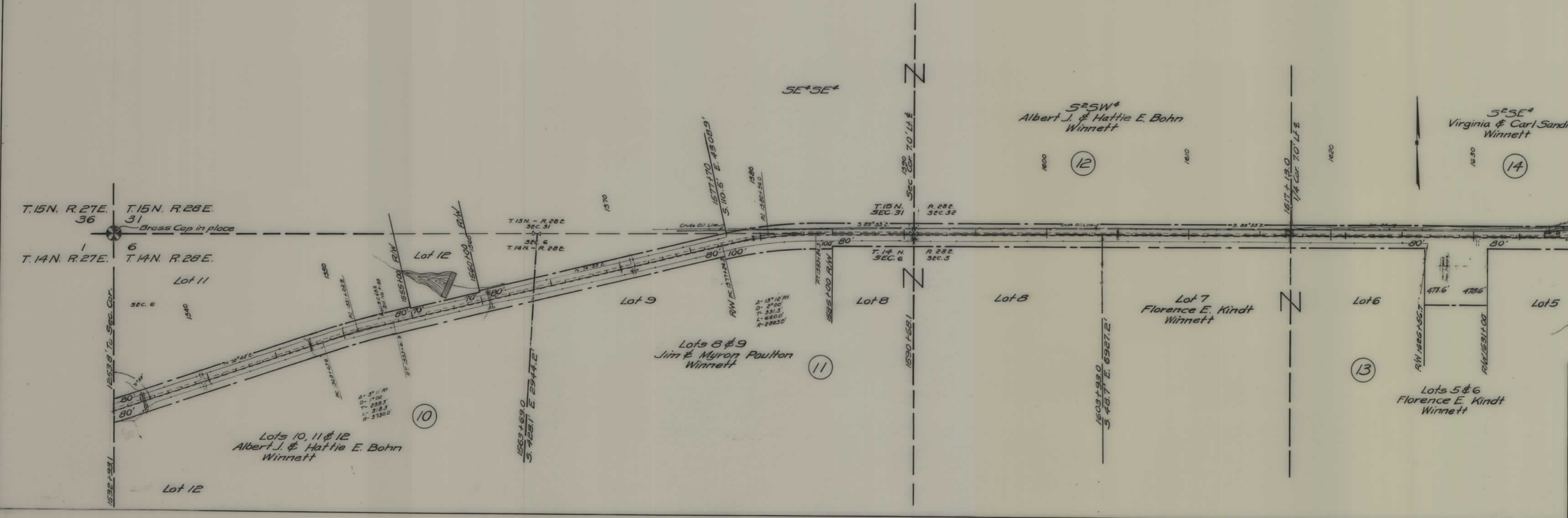
APPROVED BY _____ R/W ENGINEER

FED. ROAD DIST. NO.	STATE	FED. AID PROJ. NO.	R/W	SHEET NO.	TOTAL SHEETS
8	MONT.	256(18)	7/10	2	6



STATE OF MONTANA
 STATE HIGHWAY COMMISSION
 PLAT SHOWING LAND
 REQUIRED FOR RIGHT OF WAY
 PETROLEUM COUNTY
 SCALE 1"=400' MAP COMPLETED 3-9-53
 DESCRIPTIONS WRITTEN BY J.R. DATE 3-13-53
 DESCRIPTIONS CHECKED BY T.H.J. DATE 3-26-53
 APPROVED BY _____ R/W ENGINEER

FED. ROAD DIST. NO.	STATE	FED. AID PROJ. NO.	R/W	SHEET NO.	TOTAL SHEETS
8	MONT.	F 256(18)	1/4	3	6

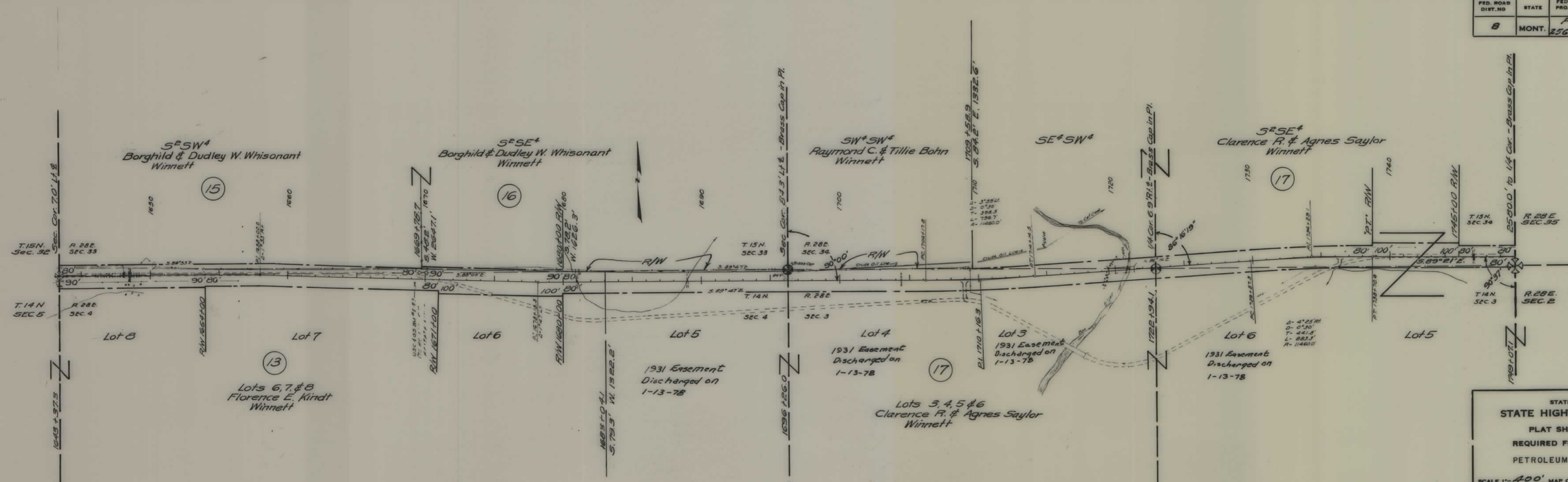


STATE OF MONTANA
STATE HIGHWAY COMMISSION
 PLAT SHOWING LAND
 REQUIRED FOR RIGHT OF WAY
 PETROLEUM COUNTY

SCALE 1" = 400' MAP COMPLETED 3-10-53
 DESCRIPTIONS WRITTEN BY J.L. DATE 3-16-53
 DESCRIPTIONS CHECKED BY M.B. DATE 3-30-53

APPROVED BY _____ R/W ENGINEER

FED. ROAD DIST. NO.	STATE	FED. AID PROJ. NO.	R/W	SHEET NO.	TOTAL SHEETS
8	MONT.	F 256(18)	1256(18)	4	6

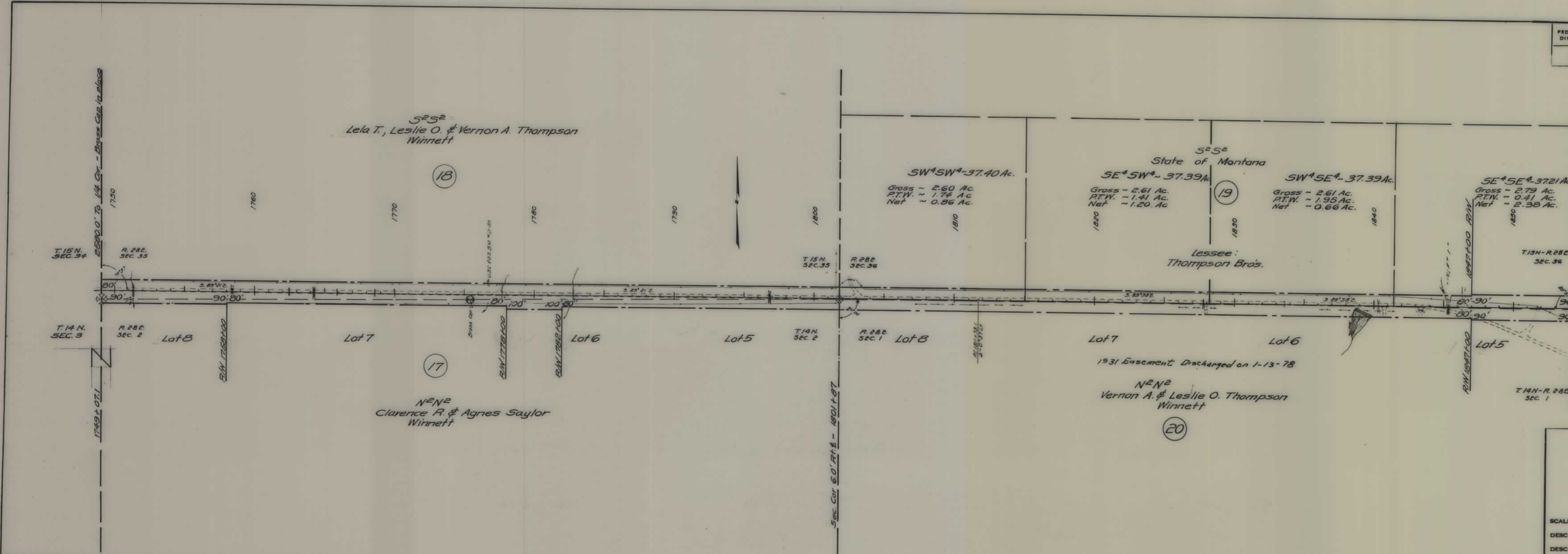


STATE OF MONTANA
STATE HIGHWAY COMMISSION
 PLAT SHOWING LAND
 REQUIRED FOR RIGHT OF WAY
 PETROLEUM COUNTY

SCALE 1" = 400' MAP COMPLETED 3-11-53
 DESCRIPTIONS WRITTEN BY J.L. DATE 3-16-53
 DESCRIPTIONS CHECKED BY W.B. DATE 3-30-53

APPROVED BY _____ R/W ENGINEER

FED. ROAD DIST. NO.	STATE	FED. AID PROJ. NO.	R/W NO.	SHEET NO.	TOTAL SHEETS
8	MONT	F 256(18)	1256(18)	5	6



STATE OF MONTANA
STATE HIGHWAY COMMISSION
PLAT SHOWING LAND
REQUIRED FOR RIGHT OF WAY
PETROLEUM COUNTY

SCALE 1"=400' MAP COMPLETED 3-11-53

DESCRIPTIONS WRITTEN BY J.R. DATE 3-17-53

DESCRIPTIONS CHECKED BY W.B. DATE 3-30-53

APPROVED BY _____ R/W ENGINEER

DEPARTMENT OF THE INTERIOR
BUREAU OF LAND MANAGEMENT
LAND OFFICE - BILLINGS, MONTANA

M-011500

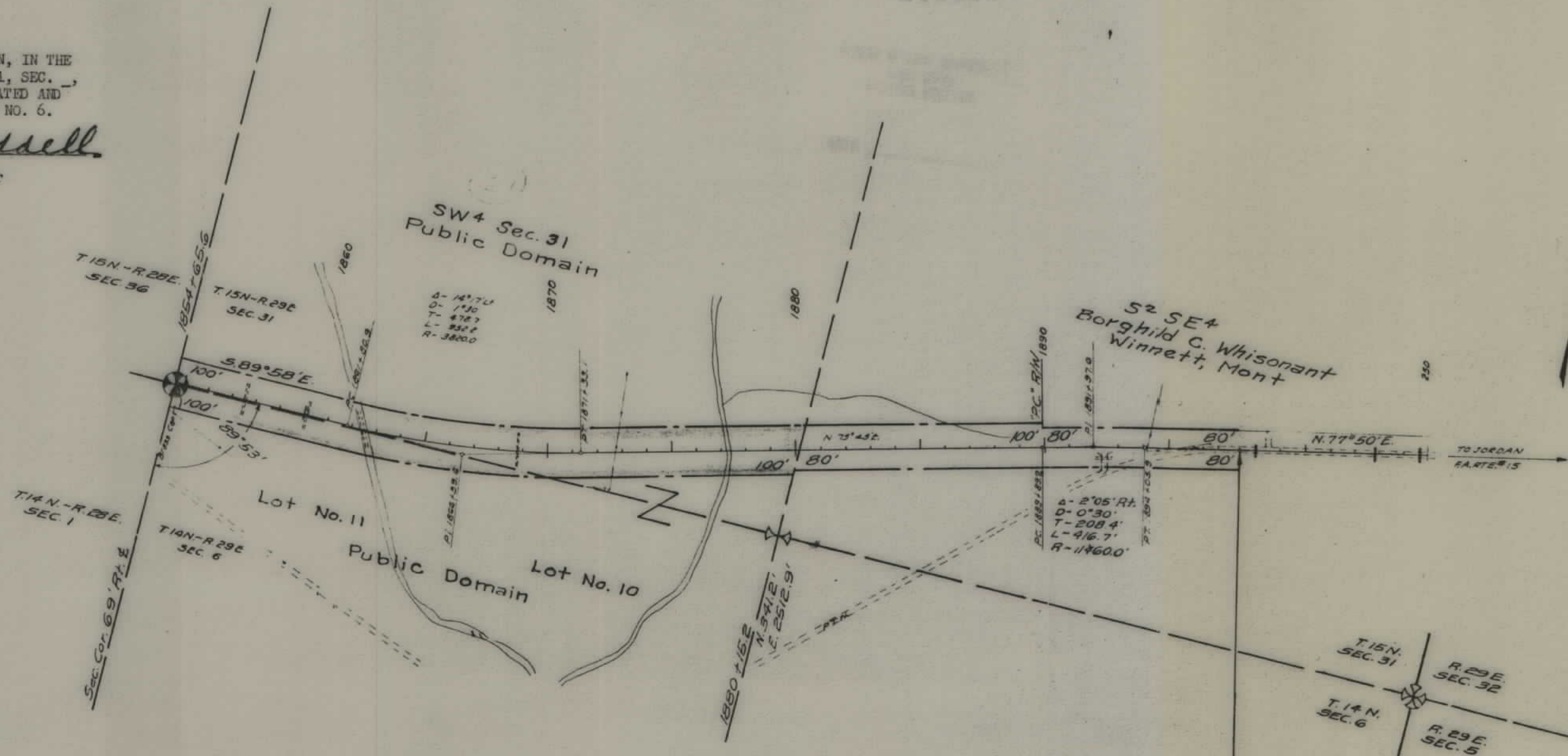
I HEREBY CERTIFY THAT THE RIGHT OF WAY REPRESENTED HEREIN, IN THE SW $\frac{1}{4}$ SECTION 31, T. 15 N., R. 29 E., AND IN LOTS 10 and 11, SEC. 6, T. 14 N., R. 29 E., MPM, PETROLEUM COUNTY, IS UNAPPROPRIATED AND UNRESERVED PUBLIC DOMAIN WITHIN FEDERAL GRAZING DISTRICT NO. 6.

5-21-53

(date)

William Ridell

WILLIAM RIDDELL, Manager



1897+85.5 End F-256 (18) =
242+34.9 Beg F-256 (17)
242+34.9 P.O.T. FAP 256-E
N. 756.1' E. 4233.7'

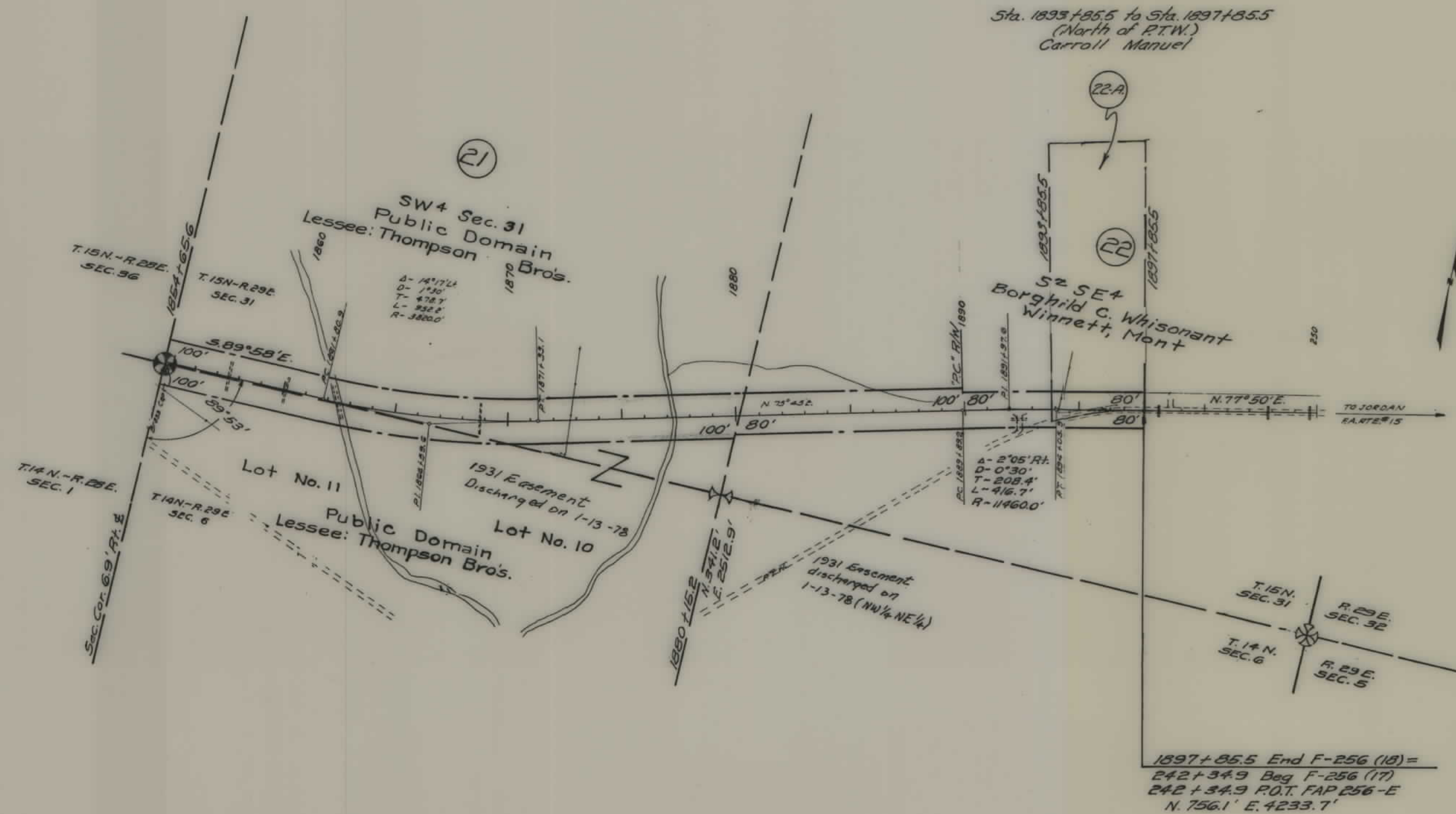
FED. ROAD DIST. NO.	STATE	FED. AID PROJ. NO.	R/W	SHEET NO.	TOTAL SHEETS
8	MONT.	F 256(18)	7/18	6	6

STATE OF MONTANA
STATE HIGHWAY COMMISSION
PLAT SHOWING LAND
REQUIRED FOR RIGHT OF WAY
PETROLEUM COUNTY

SCALE 1" = 400' MAP COMPLETED 3-12-53
DESCRIPTIONS WRITTEN BY *JL* DATE 3-17-53
DESCRIPTIONS CHECKED BY *W.B.* DATE 3-30-53

APPROVED BY _____ R/W ENGINEER

FED. ROAD DIST. NO.	STATE	FED. AID PROJ. NO.	T/W	SHEET NO.	TOTAL SHEETS
8	MONT.	F 256(18)	256(18)	6	6



STATE OF MONTANA
STATE HIGHWAY COMMISSION

PLAT SHOWING LAND
REQUIRED FOR RIGHT OF WAY
PETROLEUM COUNTY

SCALE 1" = 400' MAP COMPLETED 3-12-53

DESCRIPTIONS WRITTEN BY *J.H.* DATE 3-17-53

DESCRIPTIONS CHECKED BY *P.W.B.* DATE 3-30-53

APPROVED BY _____ R/W ENGINEER