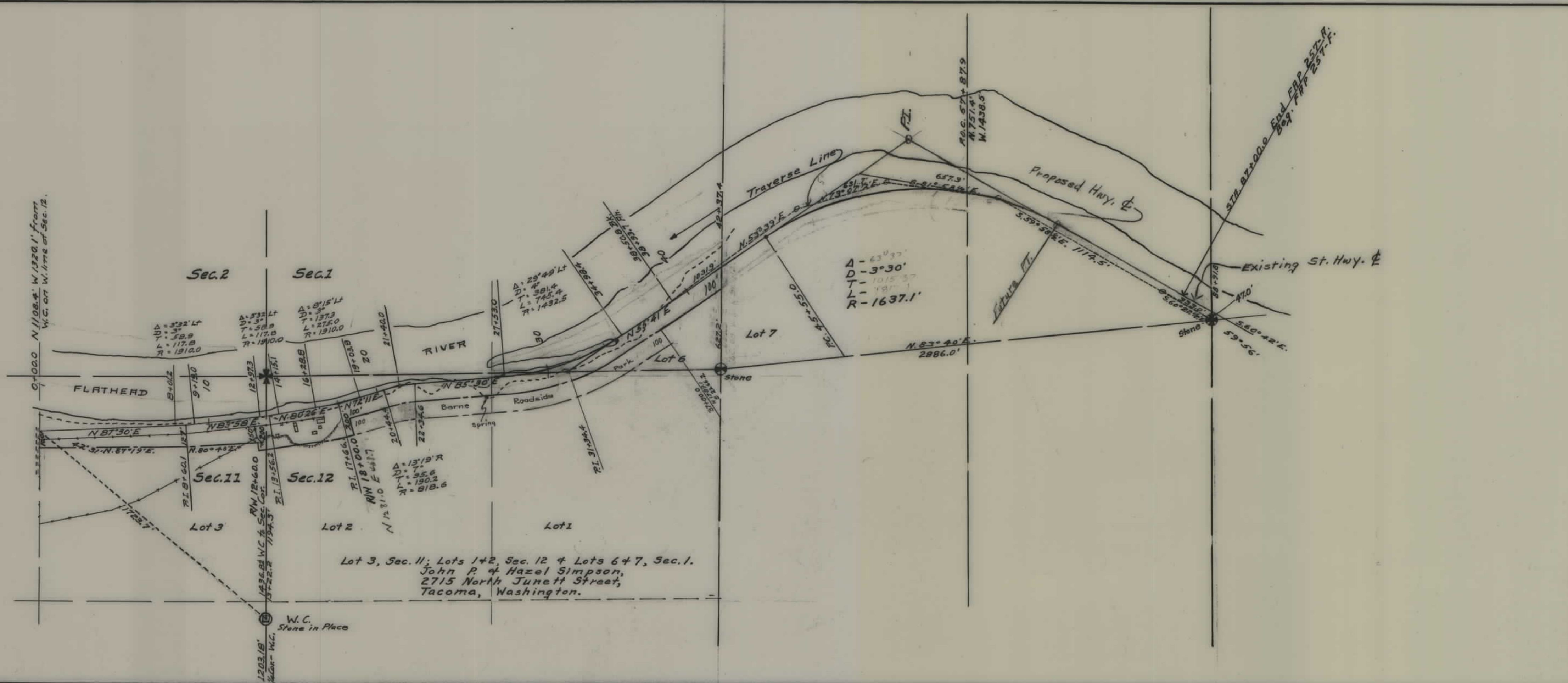
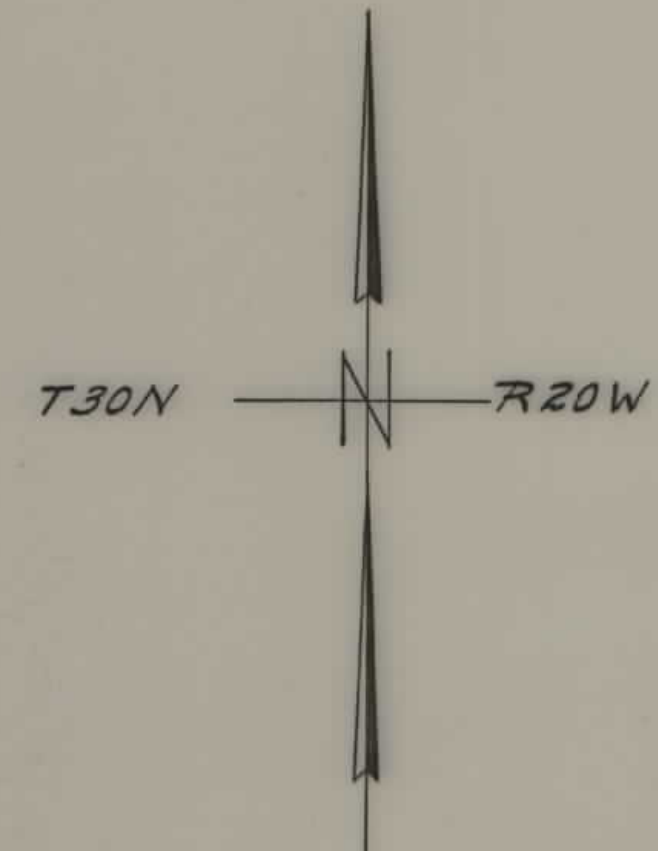


PLANS  
NOT  
TO  
SCALE



FED. ROAD DIST. NO.	STATE	FED. AID PROJ. NO.	FISCAL YEAR	SHEET NO.	TOTAL SHEETS
1	MONT.	FAP 257-A		1	1

STATE OF MONTANA  
 STATE HIGHWAY COMMISSION  
 PLAT SHOWING LAND  
 REQUIRED FOR RIGHT OF WAY  
 FLATHEAD COUNTY

SCALE 1"= 400' MAP COMPLETED JAN. 1947  
 DESCRIPTIONS WRITTEN BY E.R.P. DATE 7-26-47  
 DESCRIPTIONS CHECKED BY M.R.C. DATE 7-26-47  
 APPROVED BY \_\_\_\_\_ PLANS DEPT.  
 APPROVED BY \_\_\_\_\_ R/W ENGINEER