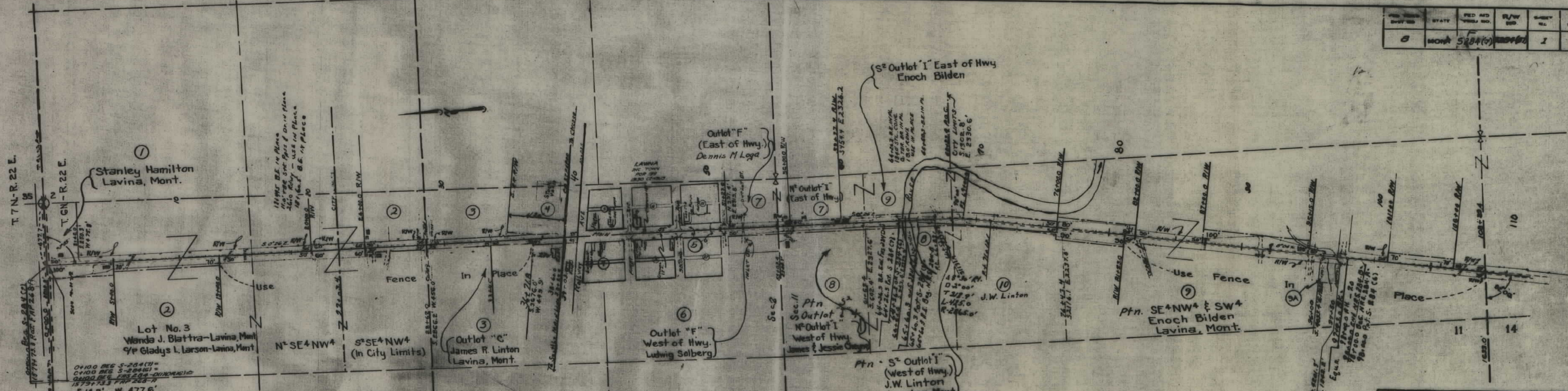


PLANS
NOT
TO
SCALE

FED. ROAD DIST. NO.	STATE	FED. ROAD PROJ. NO.	R/W NO.	SHEET NO.	TOTAL SHEETS
8	MONT.	5284(7)	2044	1	3



0+100 REG. S-264(7) =
 0+100 REG. S-264(8) =
 0+100 REG. S-264(9) =
 1573+733 FHP 268-R
 5.14.3' W. 477.6'

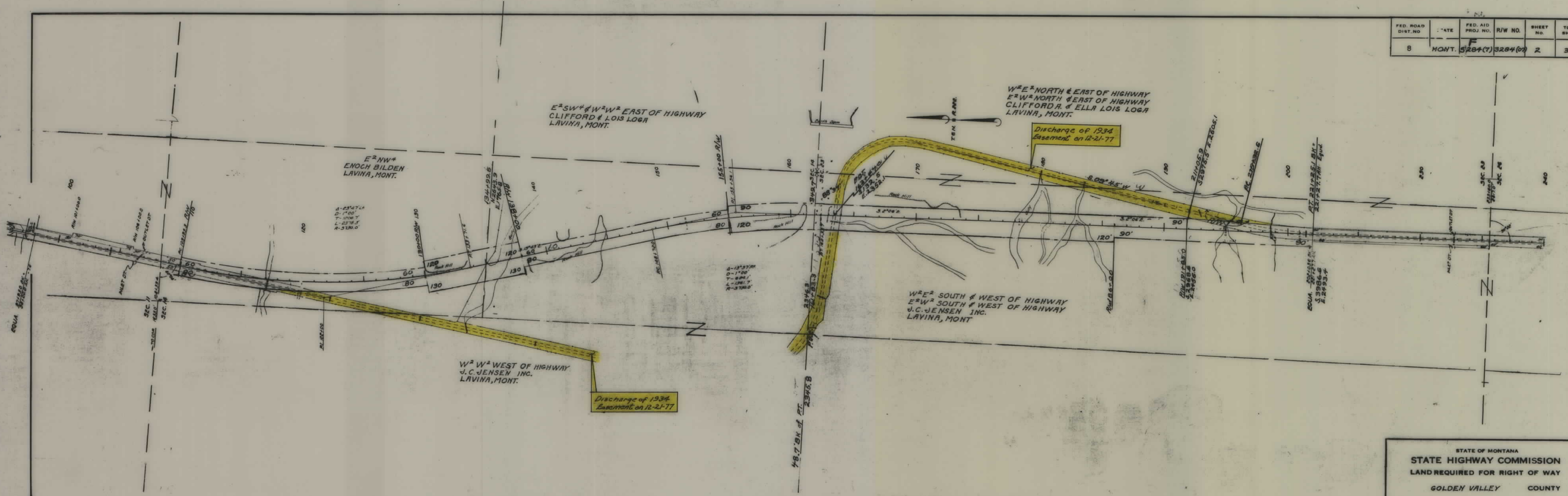
Note:
 FOR BORROW AREAS: refer to Sheet 1-F268-B

STATE OF MONTANA
 STATE HIGHWAY COMMISSION
 'LAT SHOWING LAND
 REQUIRED FOR RIGHT OF WAY
 GOLDEN VALLEY COUNTY

SCALE 1"=400' MAP COMPLETED 6/2/1952
 DESCRIPTIONS WRITTEN BY T.W.I. DATE 6/2/52
 DESCRIPTIONS CHECKED BY M.P. DATE 6/3/52

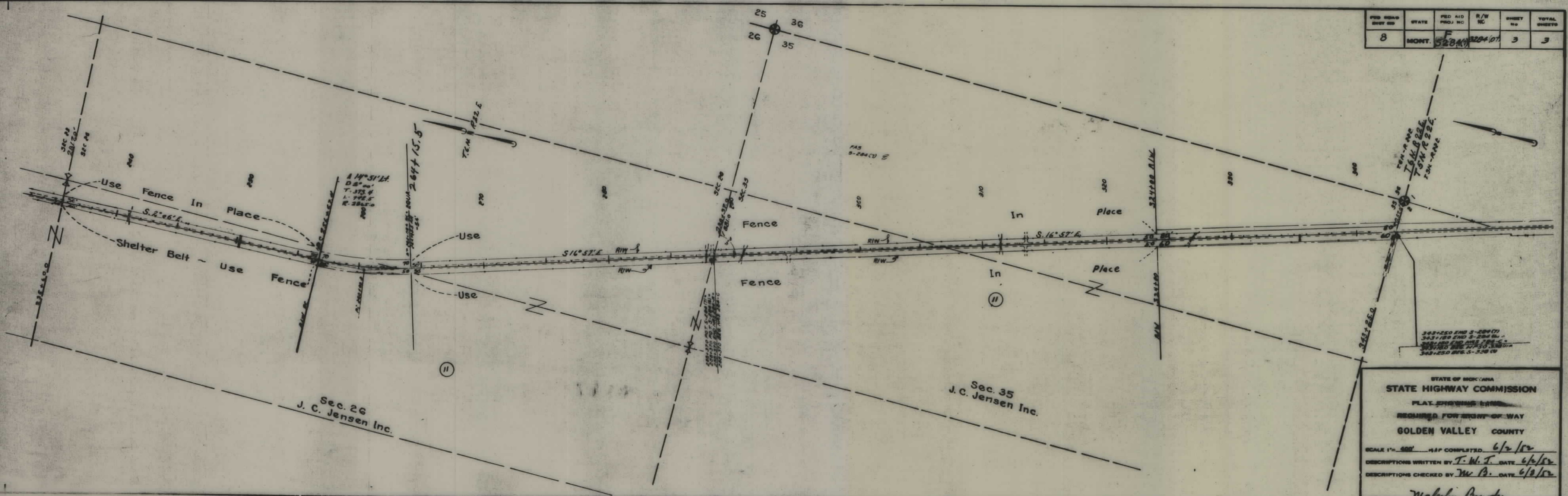
APPROVED BY *Malcolm Bowler* R/W ENGINEER

FED. ROAD DIST. NO.	STATE	FED. AID PROJ. NO.	R/W NO.	SHEET NO.	TOTAL SHEETS
8	MONT.	5284(7)	3284(02)	2	3



STATE OF MONTANA
 STATE HIGHWAY COMMISSION
 LAND REQUIRED FOR RIGHT OF WAY
 GOLDEN VALLEY COUNTY
 SCALE 1" = 400' MAP COMPLETED 1 SEPT. 55

FED ROAD DIST NO	STATE	FED AID PROJ NO	R/W NO	SHEET NO	TOTAL SHEETS
8	MONT.	528(1)	3294.07	3	3



STATE OF MONTANA
STATE HIGHWAY COMMISSION
 PLAT SHOWING EASES
 REQUIRED FOR RIGHT-OF-WAY
GOLDEN VALLEY COUNTY

SCALE 1" = 500' MAP COMPLETED 6/2/52
 DESCRIPTIONS WRITTEN BY T.W.T. DATE 6/2/52
 DESCRIPTIONS CHECKED BY W.B. DATE 6/2/52

APPROVED BY *Malcolm Bowden* R/W ENGINEER