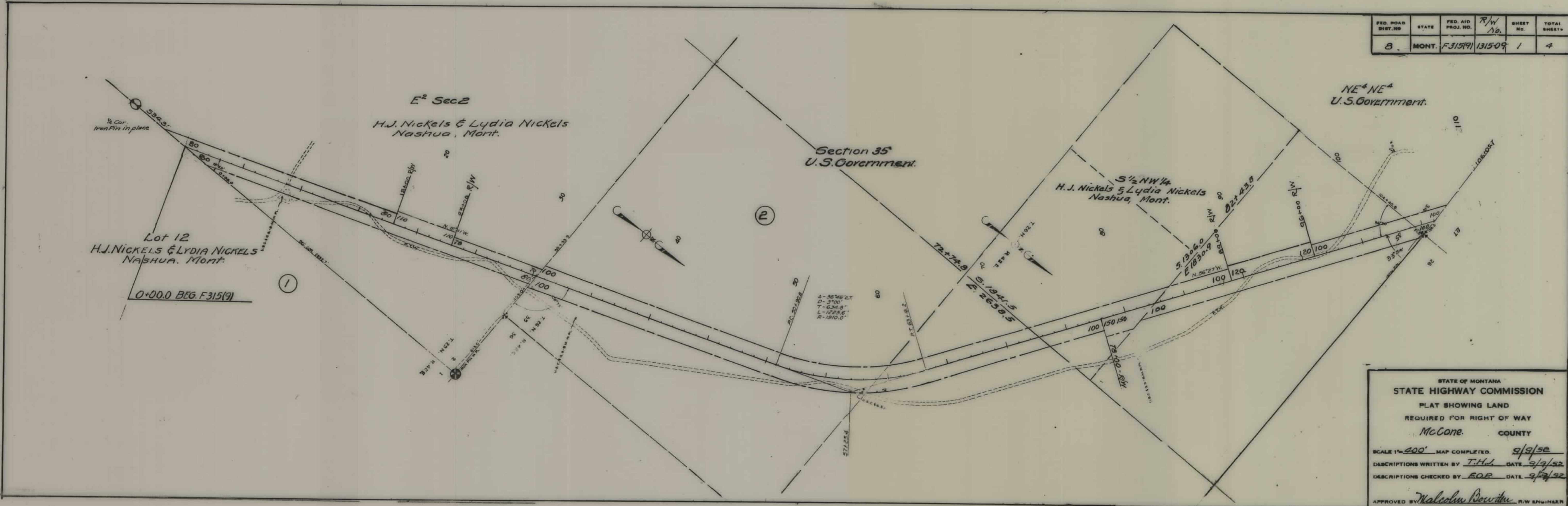


PLANS
NOT
TO
SCALE

FED. ROAD DIST. NO.	STATE	FED. AID PROJ. NO.	R/W No.	SHEET NO.	TOTAL SHEETS
8	MONT.	F.315(9)	1315-09	1	4



STATE OF MONTANA
STATE HIGHWAY COMMISSION
PLAT SHOWING LAND
REQUIRED FOR RIGHT OF WAY
McCone COUNTY

SCALE 1"=200' MAP COMPLETED 9/9/52
DESCRIPTIONS WRITTEN BY T.H.L. DATE 9/9/52
DESCRIPTIONS CHECKED BY EOP DATE 9/2/52

APPROVED BY Malcolm Rowlett R/W ENGINEER

DEPARTMENT OF THE INTERIOR
BUREAU OF LAND MANAGEMENT
LAND OFFICE, BILLINGS, MONTANA

Montana 010254

FOUR CORNER DIST. NO.	STATE	FED. AID PROJ. NO.	FY	SHEET NO.	TOTAL SHEETS
8	MONT.	F-315(9)	1950	1	4

I hereby Certify that the Right of Way represented hereon in -
(Sheets 1, 2 and 3 of Mont F 315(9))

Subdivision	Section	Township (North)	Range (East)
E and W 1/4	35	26	12
S 1/4 S 34	27	"	"
W 1/4	27	"	"
N 1/4 N 28	28	"	"
S 1/4 S 22	22	"	"
ALL	21	"	"
W 1/4	34	"	"
N 1/4 N 34	34	"	"

Section 35
Affects only unpatented and unreserved public domain within Federal Grazing District No. 2.

Sept. 19, 1952
(date)

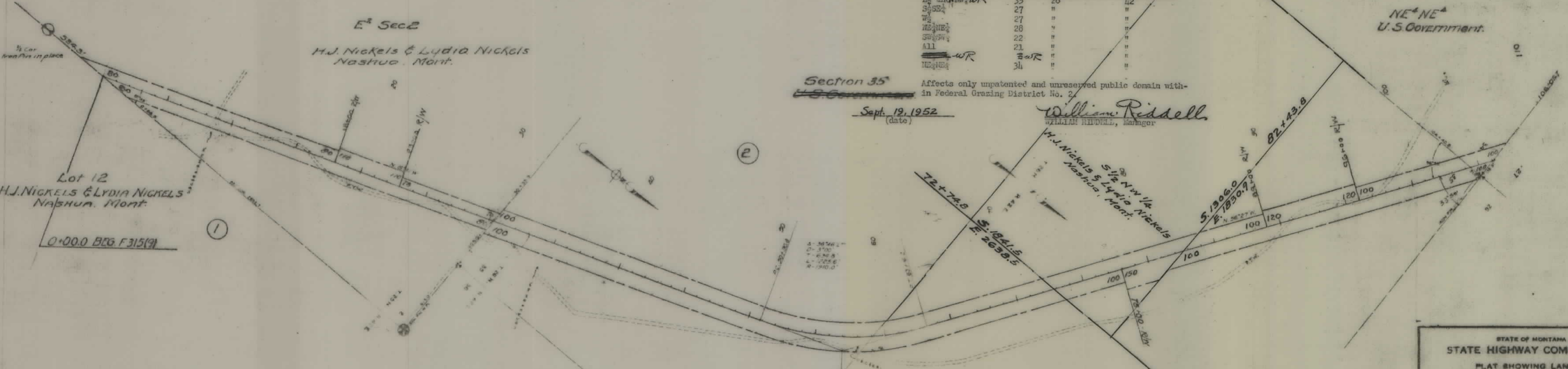
William Riddell
WILLIAM RIVDELL, Manager

NE 1/4 NE 1/4
U.S. GOVERNMENT.

E 1/2 Sec 2
H.J. Nickels & Lydia Nickels
Nashua, Mont.

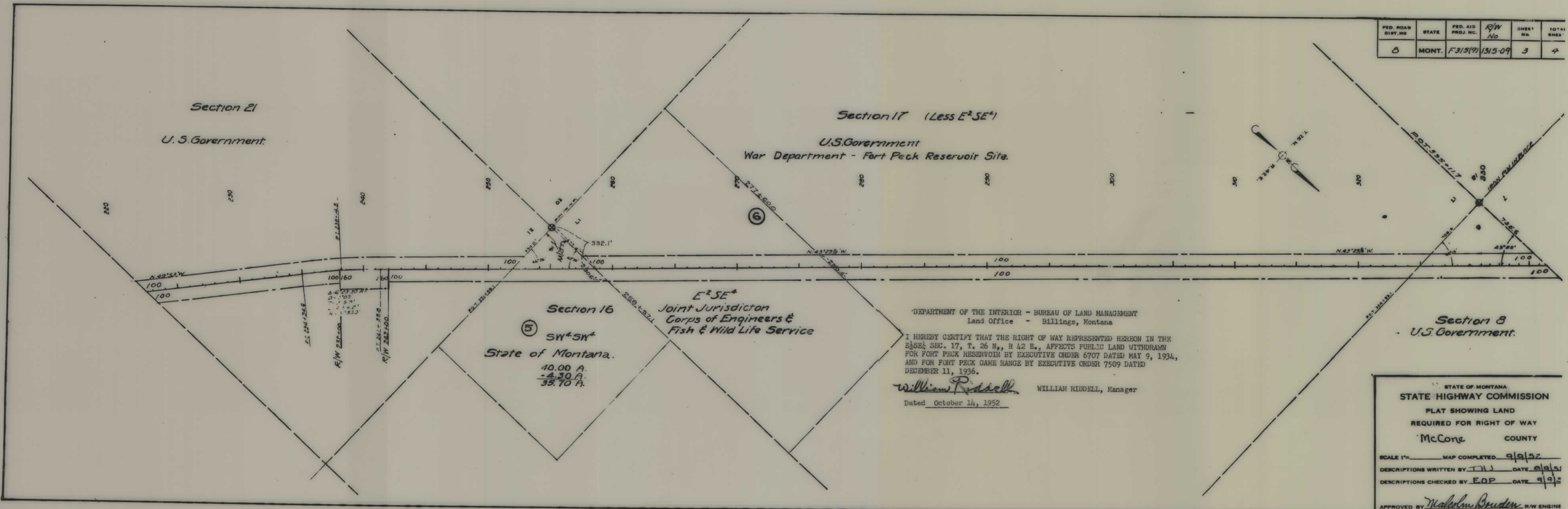
Lot 12
H.J. NICKELS & LYDIA NICKELS
NASHUA, MONT.

0+00.0 BEG. F315(9)



STATE OF MONTANA
STATE HIGHWAY COMMISSION
PLAT SHOWING LAND
REQUIRED FOR RIGHT OF WAY
McCone COUNTY
SCALE 1"=400' MAP COMPLETED 9/9/52
DESCRIPTIONS WRITTEN BY T.H.W. DATE 9/9/52
DESCRIPTIONS CHECKED BY S.O.B. DATE 9/9/52
APPROVED BY Malcolm Rowden R.W. ENGINEER

FED. ROAD DIST. NO.	STATE	FED. AID PROJ. NO.	R/W No.	SHEET NO.	TOTAL SHEETS
8	MONT.	F315(9)	1315-09	3	4



Section 16
 (5) SW⁴SW⁴
 State of Montana.
 40.00 A.
 - 4.30 A.
 35.70 A.

DEPARTMENT OF THE INTERIOR - BUREAU OF LAND MANAGEMENT
 Land Office - Billings, Montana

I HEREBY CERTIFY THAT THE RIGHT OF WAY REPRESENTED HEREON IN THE E²SE⁴ SEC. 17, T. 26 N., R 42 E., AFFECTS PUBLIC LAND WITHDRAWN FOR FORT PECK RESERVOIR BY EXECUTIVE ORDER 6707 DATED MAY 9, 1934, AND FOR FORT PECK GAME RANGE BY EXECUTIVE ORDER 7509 DATED DECEMBER 11, 1936.

William Riddell WILLIAM RIDDELL, Manager
 Dated October 14, 1952

STATE OF MONTANA
 STATE HIGHWAY COMMISSION
 PLAT SHOWING LAND
 REQUIRED FOR RIGHT OF WAY
 McCone COUNTY

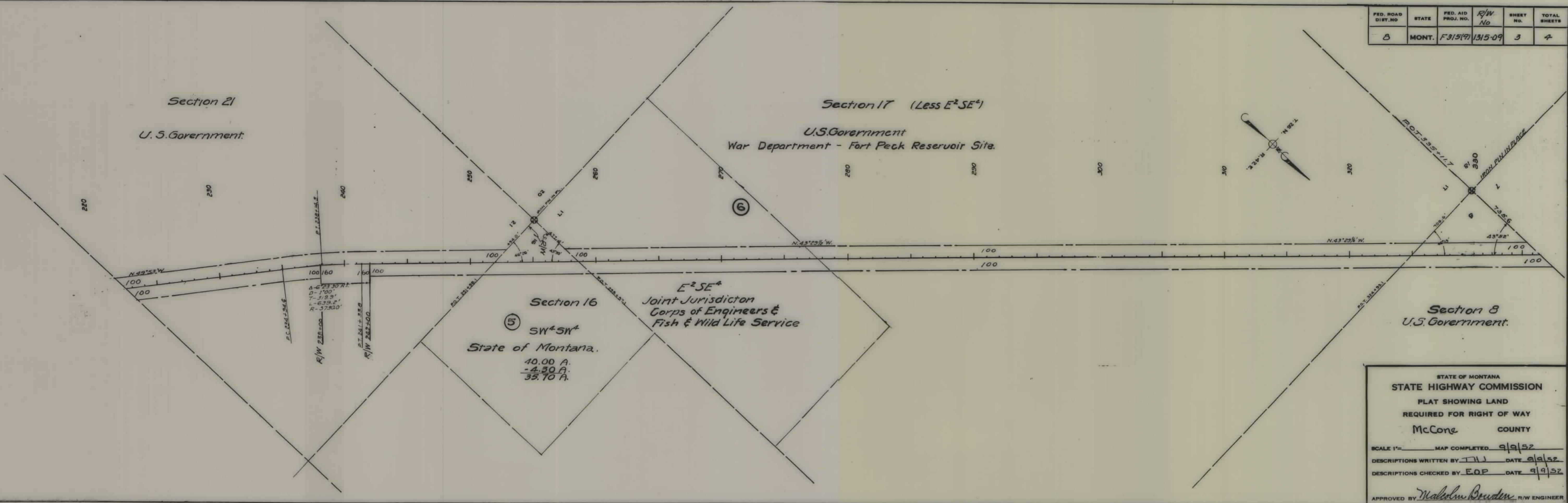
SCALE 1" = _____ MAP COMPLETED 9/9/52
 DESCRIPTIONS WRITTEN BY T.H. DATE 9/9/51
 DESCRIPTIONS CHECKED BY E.O.P. DATE 9/9/51

APPROVED BY *Malcolm Boudin* R/W ENGINE

FED. ROAD DIST. NO.	STATE	FED. AID PROJ. NO.	R/W No	SHEET NO.	TOTAL SHEETS
8	MONT.	F315(9)	1315-09	3	4

Section 21
U.S. Government.

Section 17 (Less E²SE⁴)
U.S. Government
War Department - Fort Peck Reservoir Site.



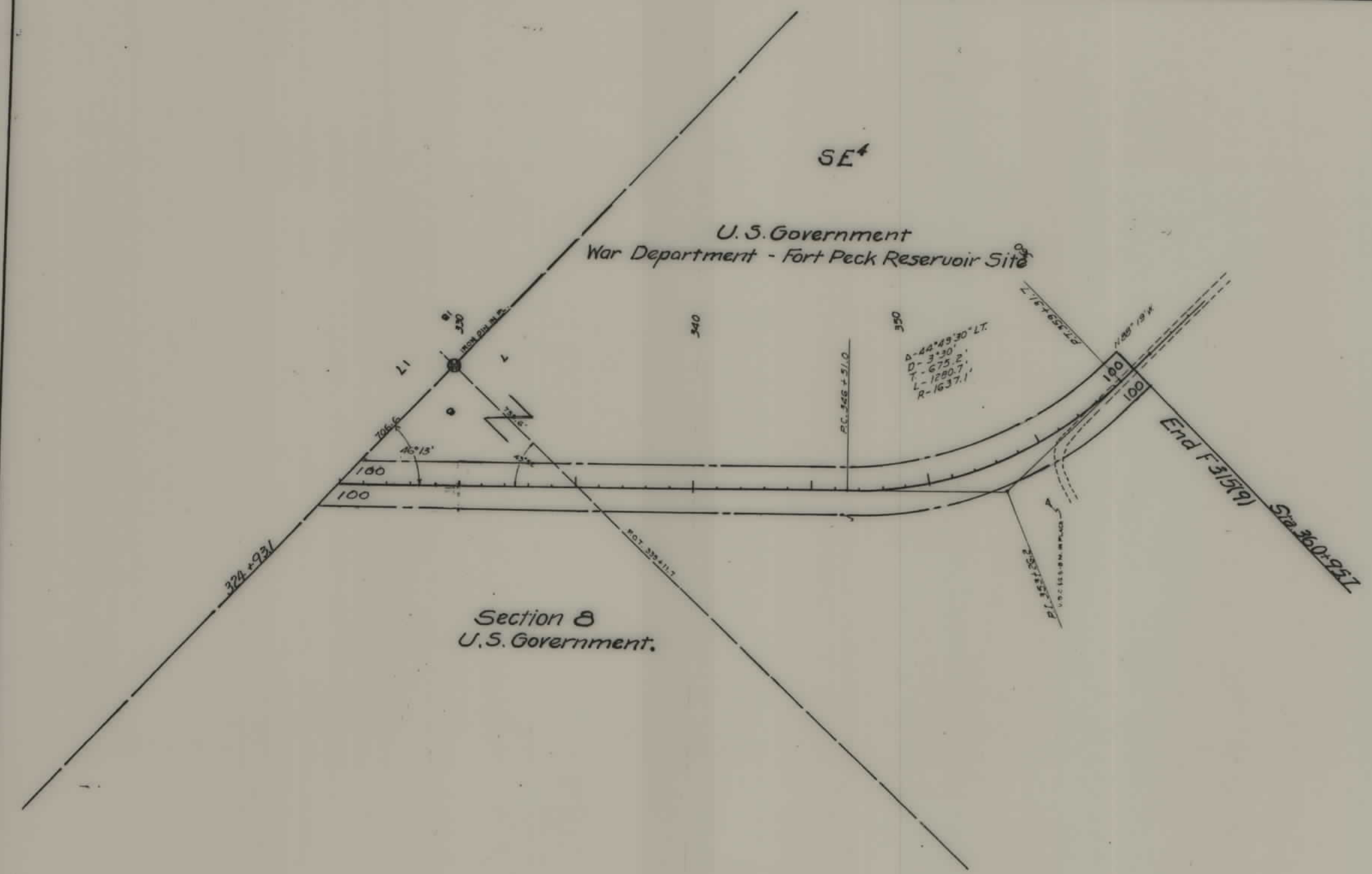
Section 16
⑤ SW⁴SW⁴
State of Montana.
10.00 A.
- 4.50 A.
35.70 A.

E²SE⁴
Joint Jurisdiction
Corps of Engineers &
Fish & Wild Life Service

Section 8
U.S. Government.

STATE OF MONTANA
STATE HIGHWAY COMMISSION
PLAT SHOWING LAND
REQUIRED FOR RIGHT OF WAY
McCone COUNTY
SCALE 1" = _____ MAP COMPLETED 9/9/52
DESCRIPTIONS WRITTEN BY T.H.J. DATE 9/9/52
DESCRIPTIONS CHECKED BY E.O.P. DATE 9/9/52
APPROVED BY *Malcolm Bowden* R/W ENGINEER

FED. ROAD DIST. NO.	STATE	FED. AID PROJ. NO.	R/W NO.	SHEET NO.	TOTAL SHEETS
8	MONT.	F315(9)	1315-09	4	4



STATE OF MONTANA
 STATE HIGHWAY COMMISSION
 PLAT SHOWING LAND
 REQUIRED FOR RIGHT OF WAY
 McCone COUNTY

SCALE 1" = 400' MAP COMPLETED 9/9/52
 DESCRIPTIONS WRITTEN BY T.H.I. DATE 9/9/52
 DESCRIPTIONS CHECKED BY FOP DATE 9/9/52

APPROVED BY *Malcolm Bowden* R/W ENGINEER

F 315(9) SHT 4 OF 4