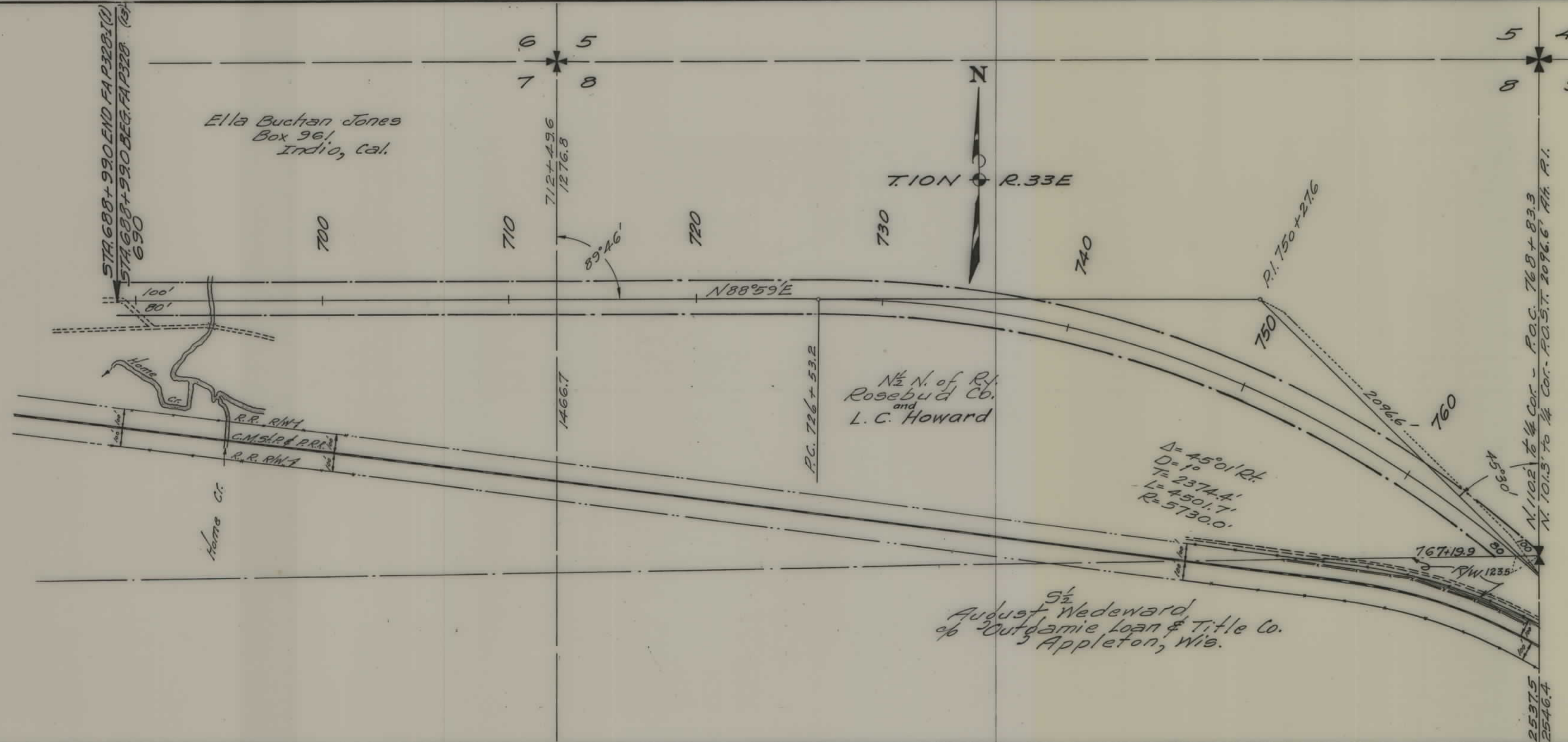


PLANS
NOT
TO
SCALE

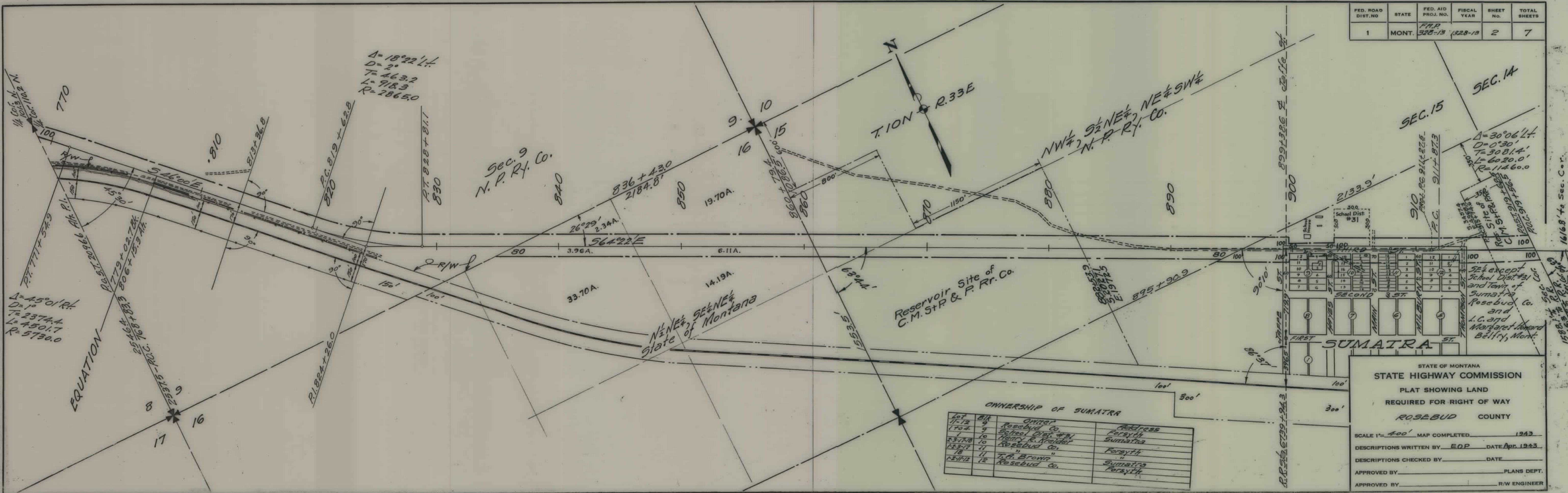
FED. ROAD DIST. NO.	STATE	FED. AID PROJ. NO.	FISCAL YEAR	SHEET NO.	TOTAL SHEETS
1	MONT.	F.R.P. 528-13	1928-13	1	7



STATE OF MONTANA
 STATE HIGHWAY COMMISSION
 PLAT SHOWING LAND
 REQUIRED FOR RIGHT OF WAY
 ROSEBUD COUNTY

SCALE 1" = 400' MAP COMPLETED 1943
 DESCRIPTIONS WRITTEN BY EOP DATE 1-20-43
 DESCRIPTIONS CHECKED BY _____ DATE _____
 APPROVED BY _____ PLANS DEPT.
 APPROVED BY _____ R/W ENGINEER

FED. ROAD DIST. NO.	STATE	FED. AID PROJ. NO.	FISCAL YEAR	SHEET NO.	TOTAL SHEETS
1	MONT.	F.R.P. 328-13	1943	2	7



$\Delta = 18^{\circ}22'14''$
 $D = 2'$
 $T = 163.2$
 $L = 918.3$
 $R = 2865.0$

$\Delta = 45^{\circ}01'14''$
 $D = 1'$
 $T = 2374.4$
 $L = 4501.7$
 $R = 5730.0$

$\Delta = 30^{\circ}06'14''$
 $D = 0'30''$
 $T = 3081.4'$
 $L = 6020.0'$
 $R = 11460.0'$

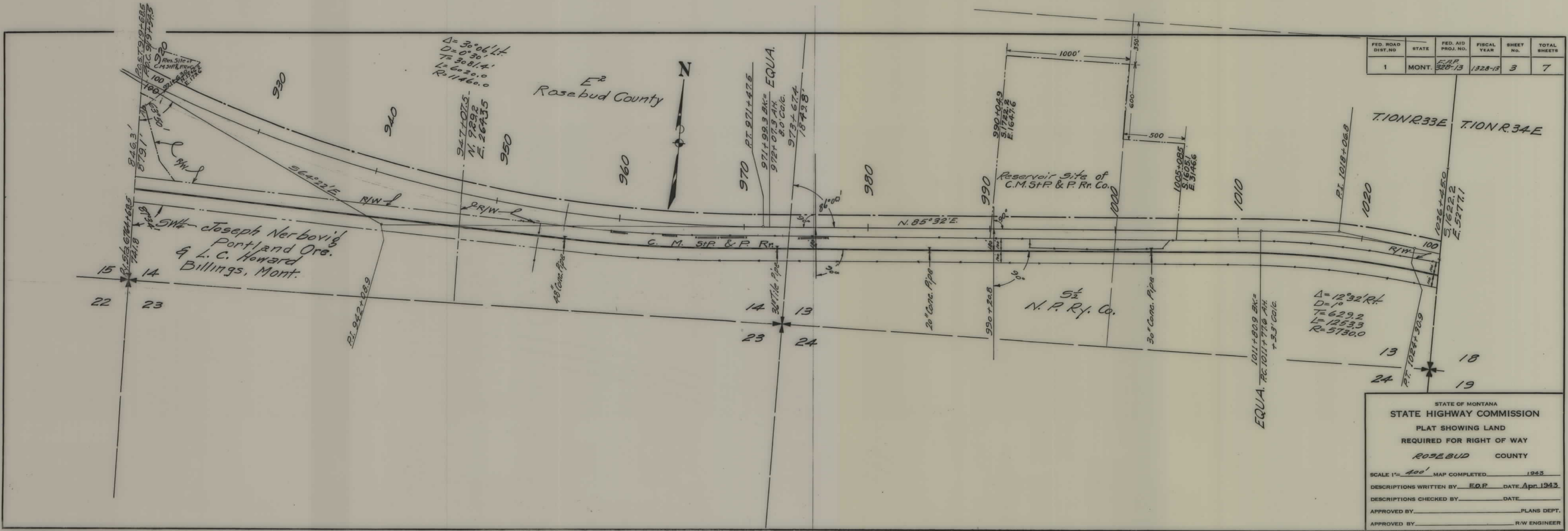
OWNERSHIP OF SUMATRA

Lot	Block	Owner	Address
11-12	9	Opiter	
1704	9	Rosebud Co.	Forsyth
1	10	School Dist. #31	Sumatra
23-178	10	Henry R. Kralder	
183-17	11	Rosebud Co.	Forsyth
18	11	T. A. Brown	
184-12	12	Rosebud Co.	Sumatra Forsyth

STATE OF MONTANA
 STATE HIGHWAY COMMISSION
 PLAT SHOWING LAND
 REQUIRED FOR RIGHT OF WAY
 ROSEBUD COUNTY

SCALE 1" = 400' MAP COMPLETED 1943
 DESCRIPTIONS WRITTEN BY EOP DATE Apr. 1943
 DESCRIPTIONS CHECKED BY _____ DATE _____
 APPROVED BY _____ PLANS DEPT.
 APPROVED BY _____ R/W ENGINEER

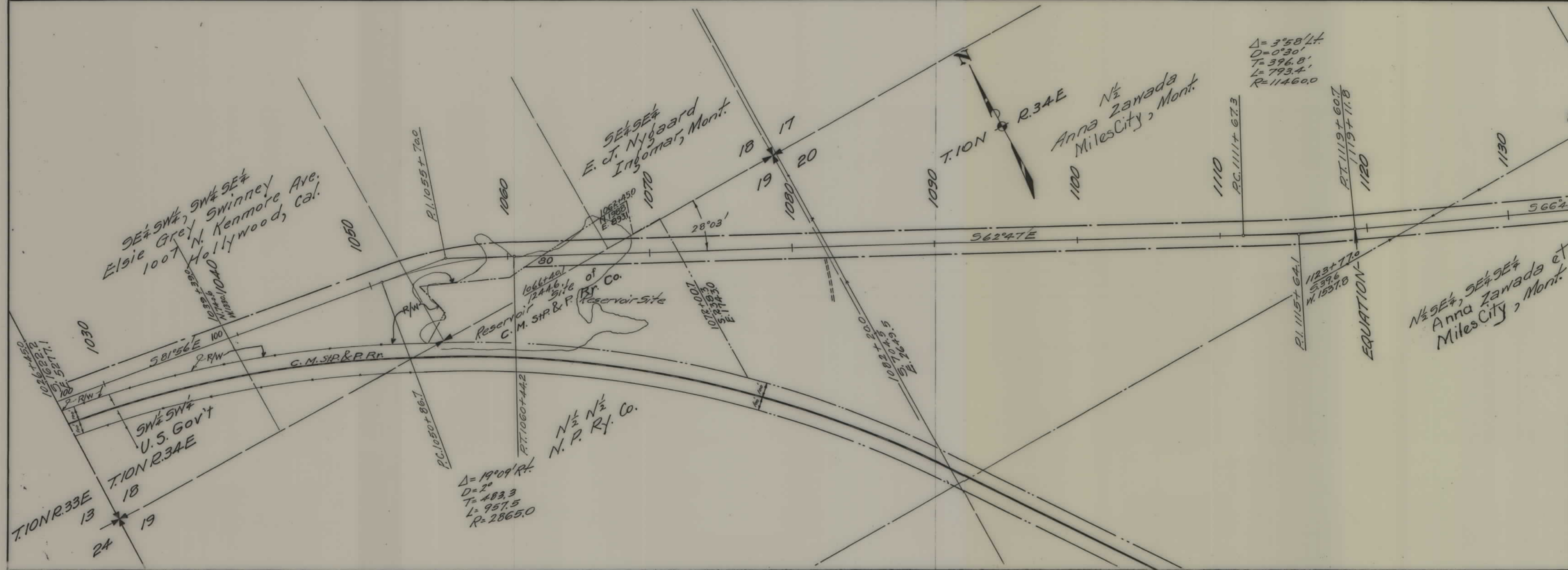
FED. ROAD DIST. NO.	STATE	FED. AID PROJ. NO.	FISCAL YEAR	SHEET NO.	TOTAL SHEETS
1	MONT.	F.A.P. 328-13	1928-13	3	7



STATE OF MONTANA
 STATE HIGHWAY COMMISSION
 PLAT SHOWING LAND
 REQUIRED FOR RIGHT OF WAY
 ROSEBUD COUNTY

SCALE 1" = 400' MAP COMPLETED 1943
 DESCRIPTIONS WRITTEN BY E.O.P. DATE Apr 1943
 DESCRIPTIONS CHECKED BY _____ DATE _____
 APPROVED BY _____ PLANS DEPT.
 APPROVED BY _____ R/W ENGINEER

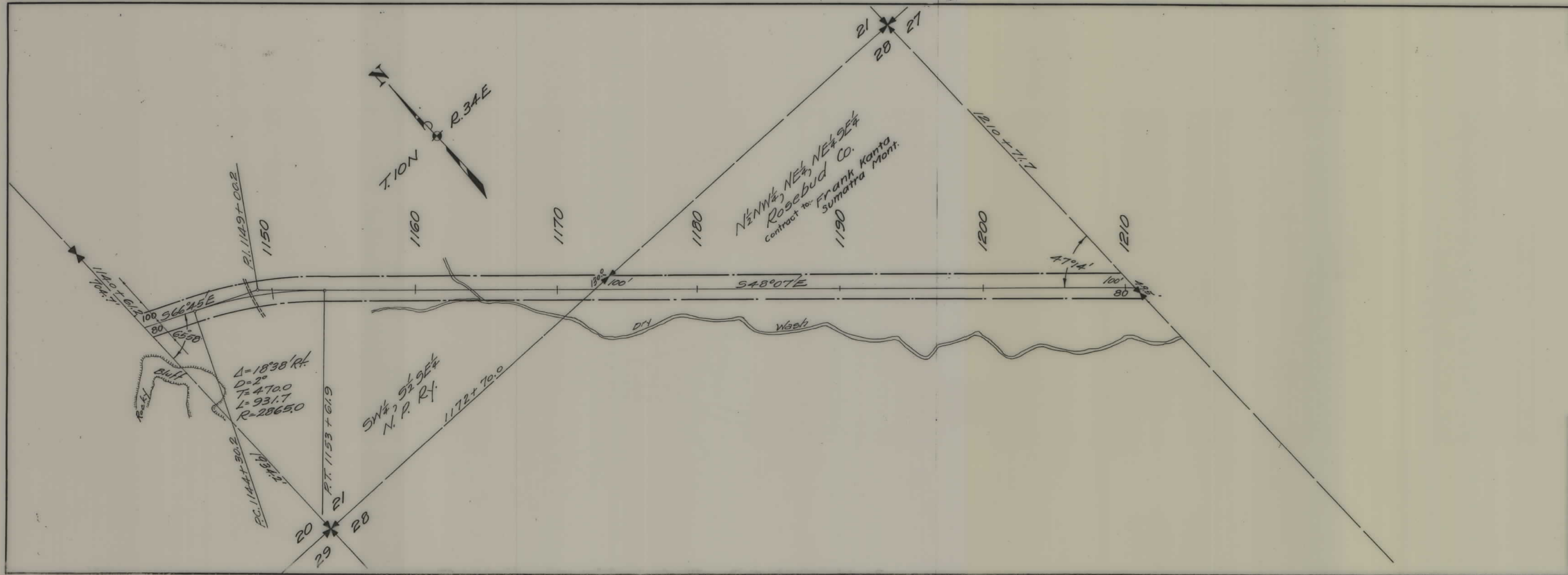
FED. ROAD DIST. NO.	STATE	FED. AID PROJ. NO.	FISCAL YEAR	SHEET NO.	TOTAL SHEETS
1	MONT.	FAP 328-13	1928-13	4	7



STATE OF MONTANA
 STATE HIGHWAY COMMISSION
 PLAT SHOWING LAND
 REQUIRED FOR RIGHT OF WAY
 ROSEBUD COUNTY

SCALE 1" = 400' MAP COMPLETED 1943
 DESCRIPTIONS WRITTEN BY E.O.P. DATE Apr 1943
 DESCRIPTIONS CHECKED BY _____ DATE _____
 APPROVED BY _____ PLANS DEPT.
 APPROVED BY _____ R/W ENGINEER

FED. ROAD DIST. NO.	STATE	FED. AID PROJ. NO.	FISCAL YEAR	SHEET NO.	TOTAL SHEETS
1	MONT.	F.A.P. 328-13	1928-13	5	7



STATE OF MONTANA
STATE HIGHWAY COMMISSION
 PLAT SHOWING LAND
 REQUIRED FOR RIGHT OF WAY
ROSEBUD COUNTY

SCALE 1" = 400' MAP COMPLETED 1943

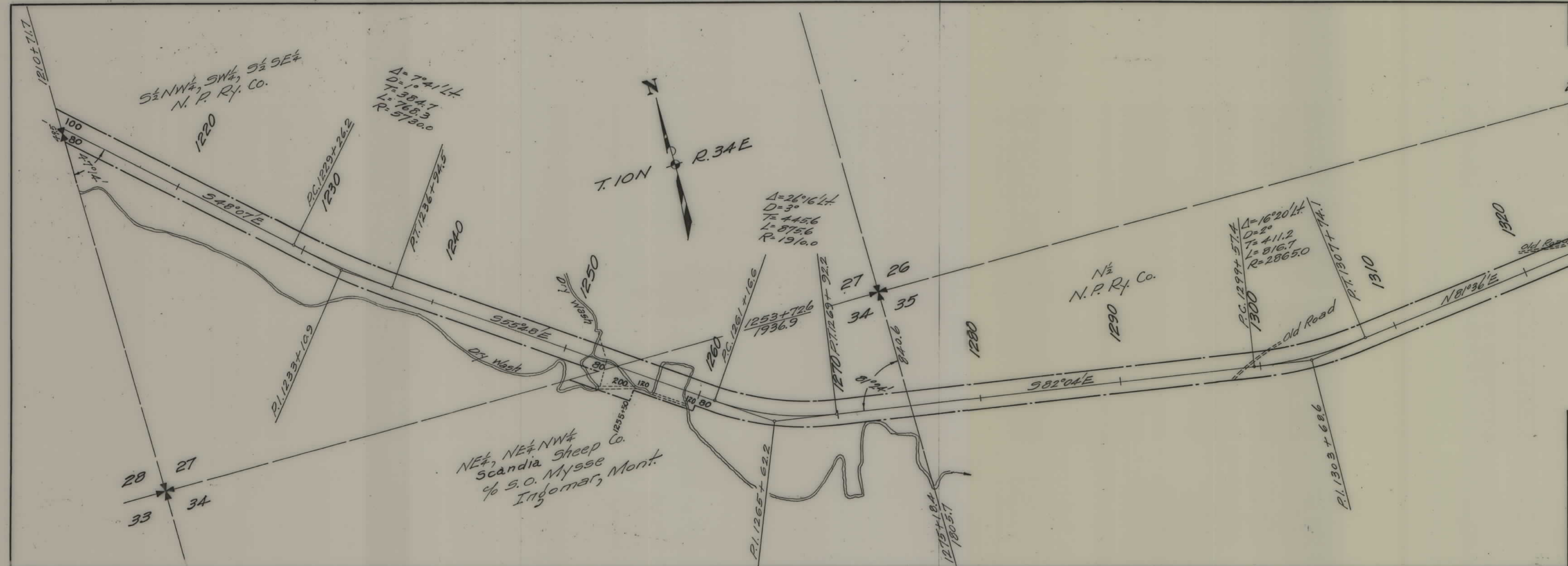
DESCRIPTIONS WRITTEN BY E.O.P. DATE Apr. 1943

DESCRIPTIONS CHECKED BY _____ DATE _____

APPROVED BY _____ PLANS DEPT.

APPROVED BY _____ R.W. ENGINEER

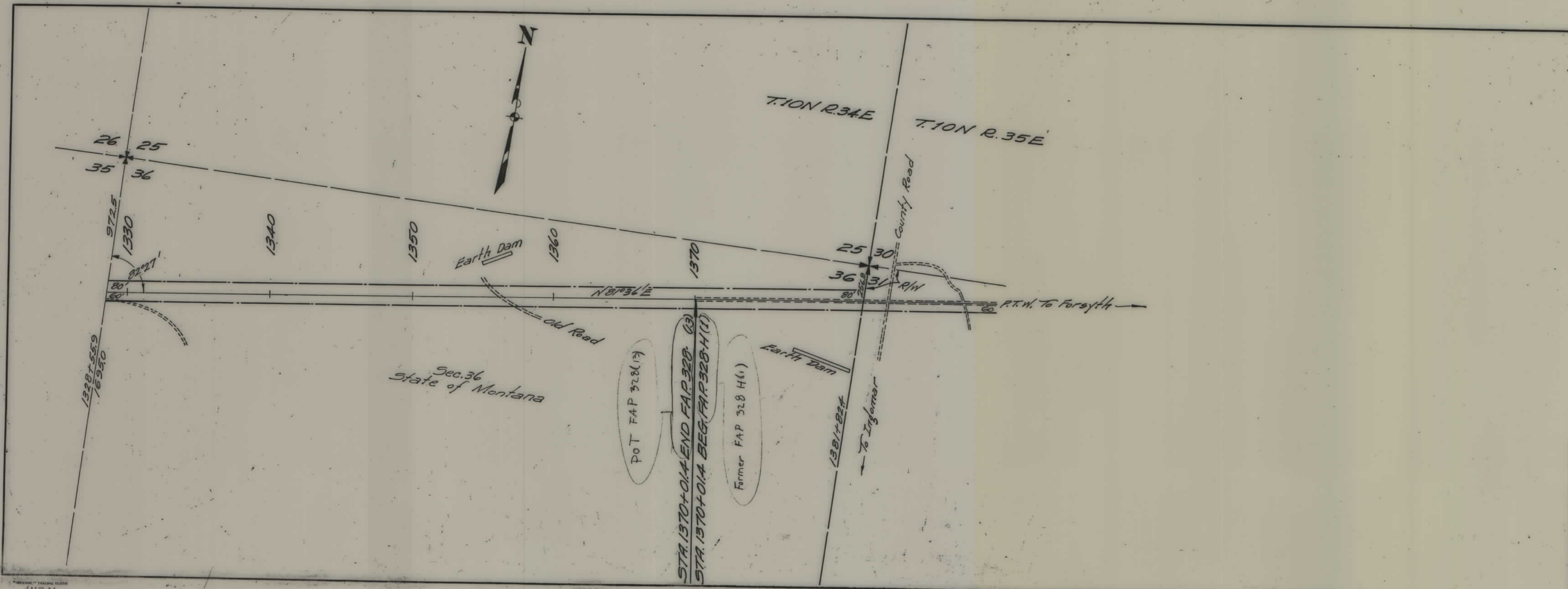
FED. ROAD DIST. NO.	STATE	FED. AID PROJ. NO.	FISCAL YEAR	SHEET NO.	TOTAL SHEETS
1	MONT.	F.A.P. 328-13	1928-13	6	7



STATE OF MONTANA
 STATE HIGHWAY COMMISSION
 PLAT SHOWING LAND
 REQUIRED FOR RIGHT OF WAY
 ROSEBUD COUNTY

SCALE 1" = 400' MAP COMPLETED 1943
 DESCRIPTIONS WRITTEN BY E.O.P. DATE Apr. 1943
 DESCRIPTIONS CHECKED BY _____ DATE _____
 APPROVED BY _____ PLANS DEPT.
 APPROVED BY _____ R/W ENGINEER

FED. ROAD DIST. NO.	STATE	FED. AID PROJ. NO.	FISCAL YEAR	SHEET NO.	TOTAL SHEETS
1	MONT.	F.A.P. 328-13	1928-13	7	7



Sec. 36
State of Montana

P.O.T. F.A.P. 328(13)
 STA. 1370+01.4 END F.A.P. 328-13
 STA. 1370+01.4 BEG. F.A.P. 328-13(1)
 Former F.A.P. 328 H(1)

STATE OF MONTANA
 STATE HIGHWAY COMMISSION
 PLAT SHOWING LAND
 REQUIRED FOR RIGHT OF WAY
 ROSEBUD COUNTY

SCALE 1" = 400' MAP COMPLETED 1943
 DESCRIPTIONS WRITTEN BY E.O.R. DATE Apr. 1943
 DESCRIPTIONS CHECKED BY _____ DATE _____
 APPROVED BY _____ PLANS DEPT.
 APPROVED BY _____ R/W ENGINEER