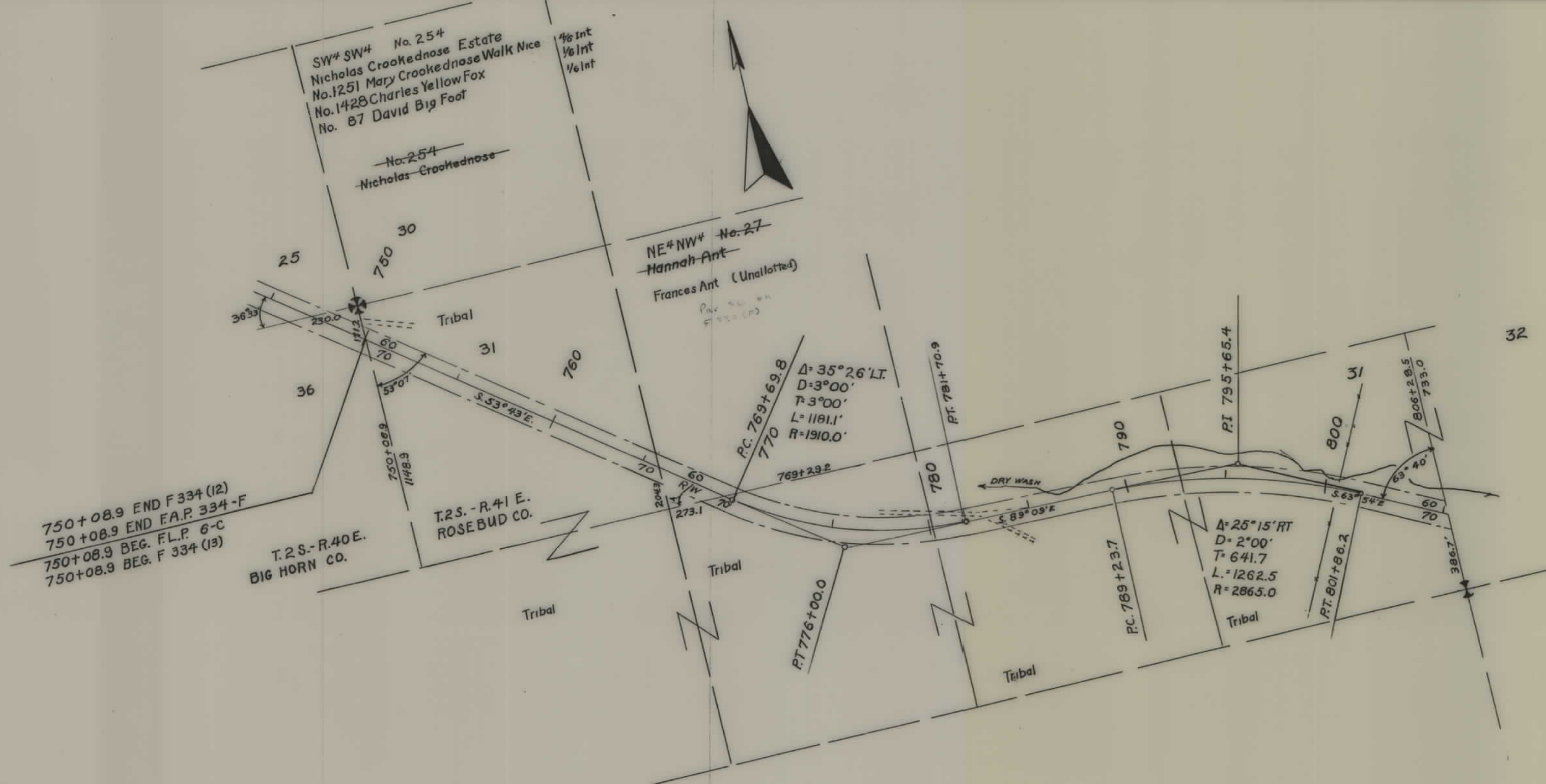


PLANS
NOT
TO
SCALE

FED. ROAD DIST. NO.	STATE	FED. AID PROJ. NO.	R/W No.	SHEET NO.	TOTAL SHEETS
1	MONT.	F-334(13)	1334-13	1	13

Construction Contract Awarded May 27 1954



750+08.9 END F 334 (12)
 750+08.9 END F.A.P. 334-F
 750+08.9 BEG. F.L.P. 6-C
 750+08.9 BEG. F 334 (13)

T.2S.-R.41 E.
 ROSEBUD CO.

T.2S.-R.40 E.
 BIG HORN CO.

STATE OF MONTANA
 STATE HIGHWAY COMMISSION
 PLAT SHOWING LAND
 REQUIRED FOR RIGHT OF WAY
 ROSEBUD COUNTY

SCALE 1" = _____ MAP COMPLETED _____

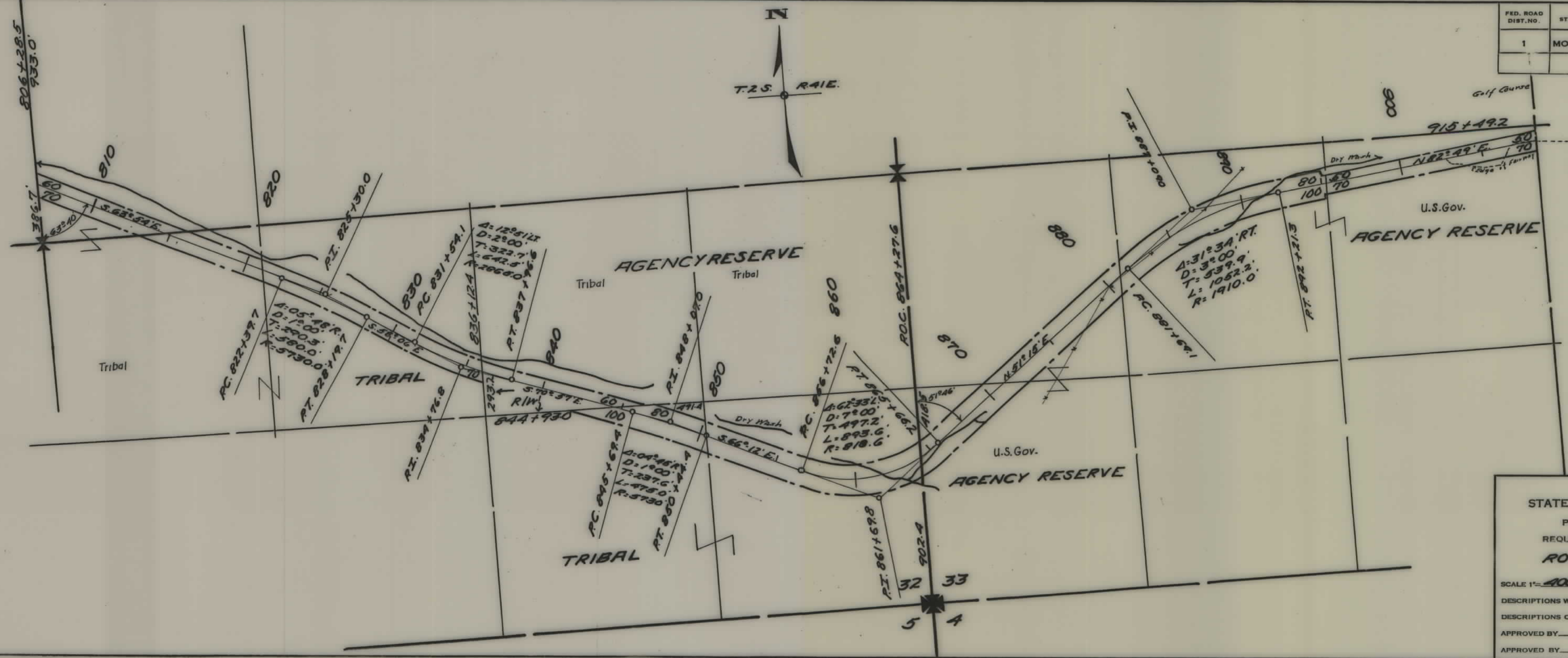
DESCRIPTIONS WRITTEN BY _____ DATE _____

DESCRIPTIONS CHECKED BY _____ DATE _____

APPROVED BY _____ PLANS DEPT.

APPROVED BY _____ R/W ENGINEER

FED. ROAD DIST. NO.	STATE	FED. AID PROJ. NO.	R/W No.	SHEET NO.	TOTAL SHEETS
1	MONT.	F.L.P. 66		2	3
		F-334(13)	1334-13	2	13



STATE OF MONTANA
 STATE HIGHWAY COMMISSION
 PLAT SHOWING LAND
 REQUIRED FOR RIGHT OF WAY
ROSEBUD COUNTY

SCALE 1" = 400' MAP COMPLETED _____

DESCRIPTIONS WRITTEN BY _____ DATE _____

DESCRIPTIONS CHECKED BY _____ DATE _____

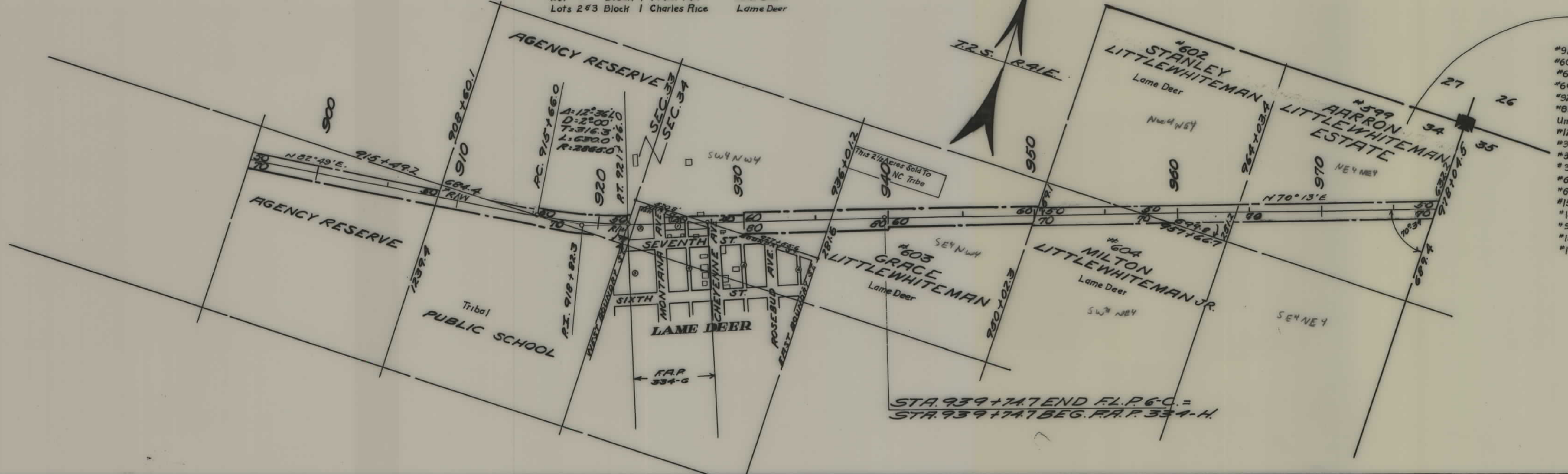
APPROVED BY _____ PLANS DEPT.

APPROVED BY _____ R/W ENGINEER

Imperial Traffic Clock 118
 E.V.E. CO., N.Y. - 439

FED. ROAD DIST. NO.	STATE	FED. AID PROJ. NO.	R/W No.	SHEET NO.	TOTAL SHEETS
1	MONT.	F334-08	1334-13	3	13

~~LOTS 1-4 BLOCK 2 - U.S. GOVT.~~ State of Mont.
~~LOTS 1-3 BLOCK 1 - MT. MITCHELL - LAME DEER~~
~~LOTS 1-5 BLOCK 1 - FRANK FARR~~ " "
 Lots 1 & 4 Block 1 State of Mont.
 Lot 5 Block 1 Frank Farr Lame Deer
 Lots 2 & 3 Block 1 Charles Rice Lame Deer



- Heirs
- *928 Elizabeth Rolland Crazy Mule 414/1134
 - *600 Sadie Littlewhiteman 108/1134
 - *604 Milton Whiteman Sr. 101/1134
 - *602 Stanley Littlewhiteman 27/1134
 - *929 Lillian Rhoda Rowland Yellowfox 27/1134
 - *811 Lena Redbird Lone Wolf 27/1134
 - Unal. Francis Samuel Redbird 27/1134
 - *1230 Thelma Foote Two Two 27/1134
 - *353 Edward Foote 27/1134
 - *354 Bertha Foote Harris 27/1134
 - *355 Eva Foote 27/1134
 - *601 Wesley Littlewhiteman 108/1134
 - *622 Frank Littlewhiteman 108/1134
 - *157 Nellie Blackwolf 48/1134
 - *159 Ben Blackwolf 8/1134
 - *952 Mary Blackwolf Russell 8/1134
 - *1369 Wilbur Paul Wolfname 4/1134
 - *1266 Martha Wolfname 4/1134

STATE OF MONTANA
 STATE HIGHWAY COMMISSION
 PLAT SHOWING LAND
 REQUIRED FOR RIGHT OF WAY
ROSEBUD COUNTY

SCALE 1" = 400' MAP COMPLETED _____

DESCRIPTIONS WRITTEN BY _____ DATE _____

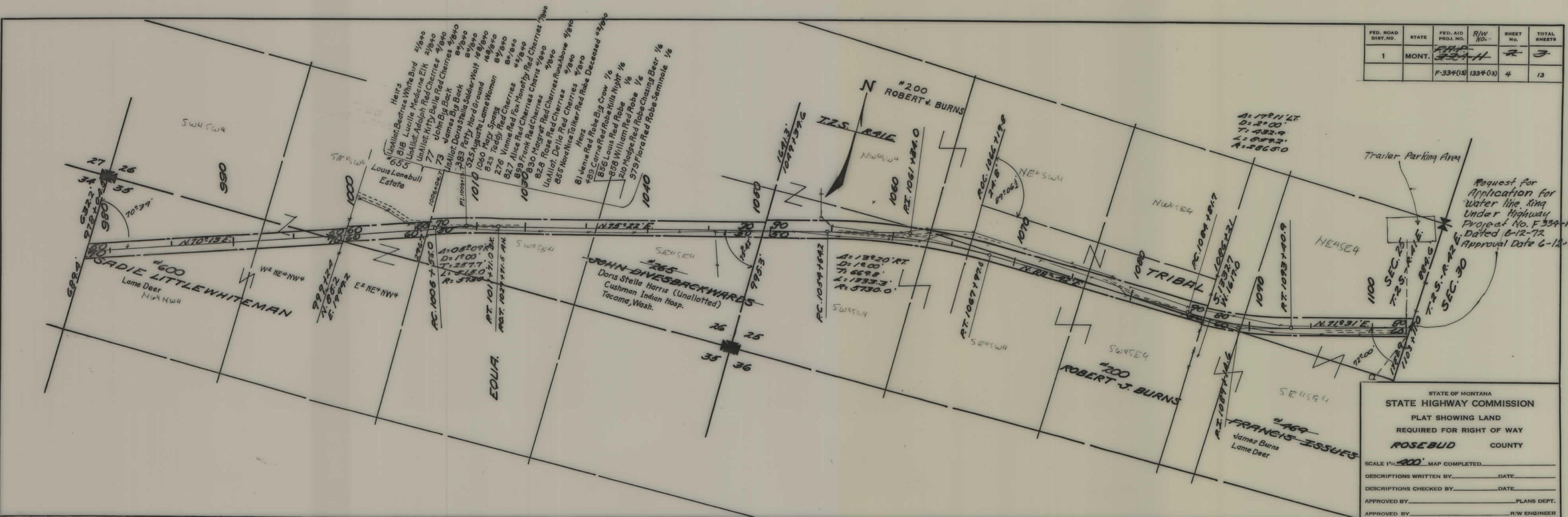
DESCRIPTIONS CHECKED BY _____ DATE _____

APPROVED BY _____ PLANS DEPT.

APPROVED BY _____ R/W ENGINEER

STA. 939+74.7 END FL. P. 6-C. =
 STA. 939+74.7 BEG. P.A.P. 334-H.

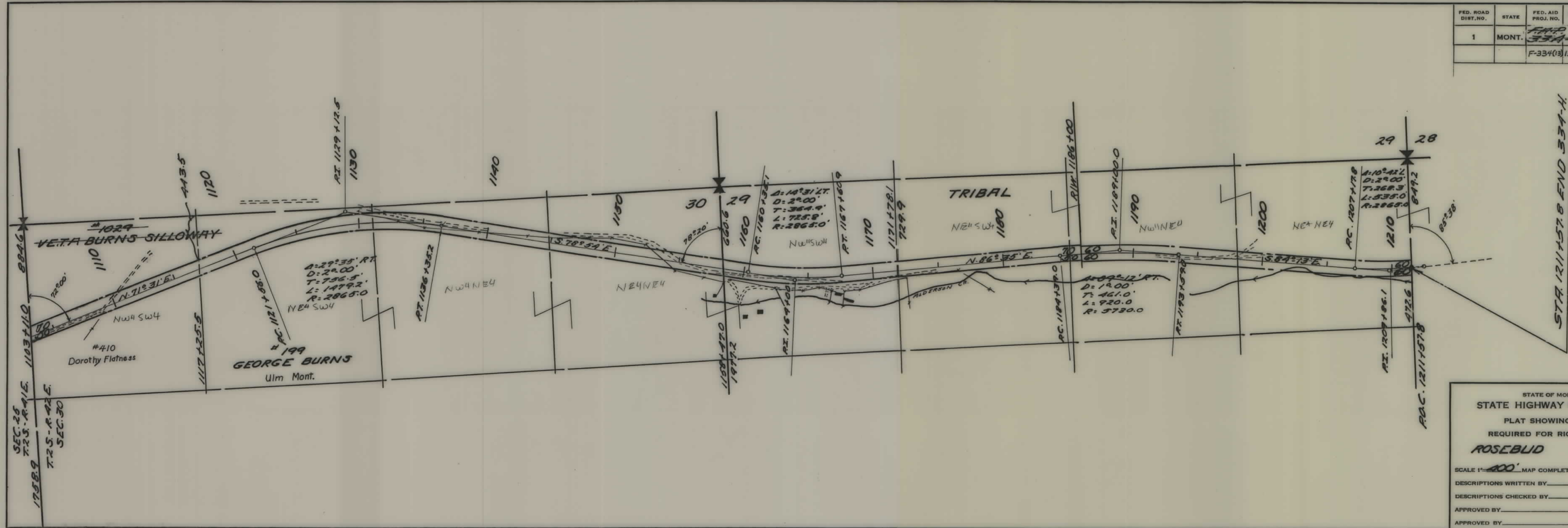
FED. ROAD DIST. NO.	STATE	FED. AID PROJ. NO.	R/W No.	SHEET NO.	TOTAL SHEETS
1	MONT.	F-334(13)	1334(13)	2	3
				4	13



STATE OF MONTANA
 STATE HIGHWAY COMMISSION
 PLAT SHOWING LAND
 REQUIRED FOR RIGHT OF WAY
 ROSEBUD COUNTY

SCALE 1"=400' MAP COMPLETED _____
 DESCRIPTIONS WRITTEN BY _____ DATE _____
 DESCRIPTIONS CHECKED BY _____ DATE _____
 APPROVED BY _____ PLANS DEPT.
 APPROVED BY _____ R/W ENGINEER

FED. ROAD DIST. NO.	STATE	FED. AID PROJ. NO.	R/W NO.	SHEET NO.	TOTAL SHEETS
1	MONT.	F-334(13)	1334-13	5	13

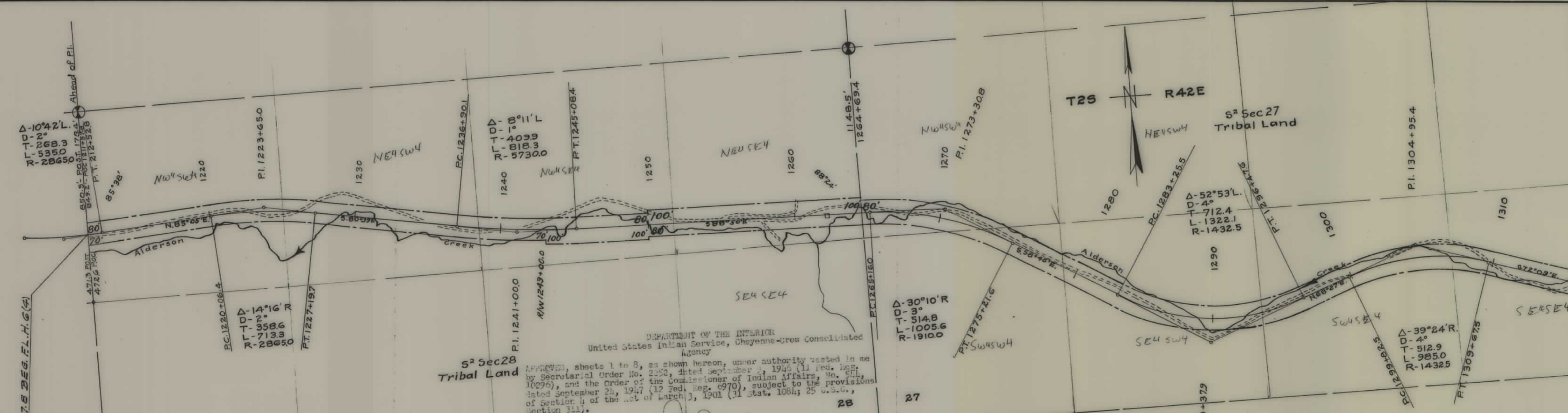


STATE OF MONTANA
 STATE HIGHWAY COMMISSION
 PLAT SHOWING LAND
 REQUIRED FOR RIGHT OF WAY
 ROSEBLID COUNTY

SCALE 1" = 400' MAP COMPLETED _____
 DESCRIPTIONS WRITTEN BY _____ DATE _____
 DESCRIPTIONS CHECKED BY _____ DATE _____
 APPROVED BY _____ PLANS DEPT. _____
 APPROVED BY _____ R/W ENGINEER _____

Imperial Tracing Cloth 114
 K & E CO. N. Y. - 8-19

FED. ROAD DIST. NO.	STATE	FED. AID PROJ. NO.	R/W No.	SHEET NO.	TOTAL SHEETS
1	MONT.	F.L.H. 1334-09	5(4)	1	7
		F334(13)	1334-13	6	13



DEPARTMENT OF THE INTERIOR
 United States Indian Service, Cheyenne-Crow Consolidated Agency

APPROVED, sheets 1 to 8, as shown hereon, under authority vested in me by Secretarial Order No. 2252, dated September 2, 1946 (11 Fed. Reg. 10296), and the Order of the Commissioner of Indian Affairs, No. 611, dated September 24, 1947 (12 Fed. Reg. 6970), subject to the provisions of Section 4 of the Act of March 3, 1901 (31 Stat. 1084; 25 U.S.C., Section 311).

7/7/49
 Superintendent

May 31, 1949
 Cheyenne River Agency
 approved as to tribal lands as shown hereon, under authority of the Tribal Council of the Northern Cheyenne Tribe

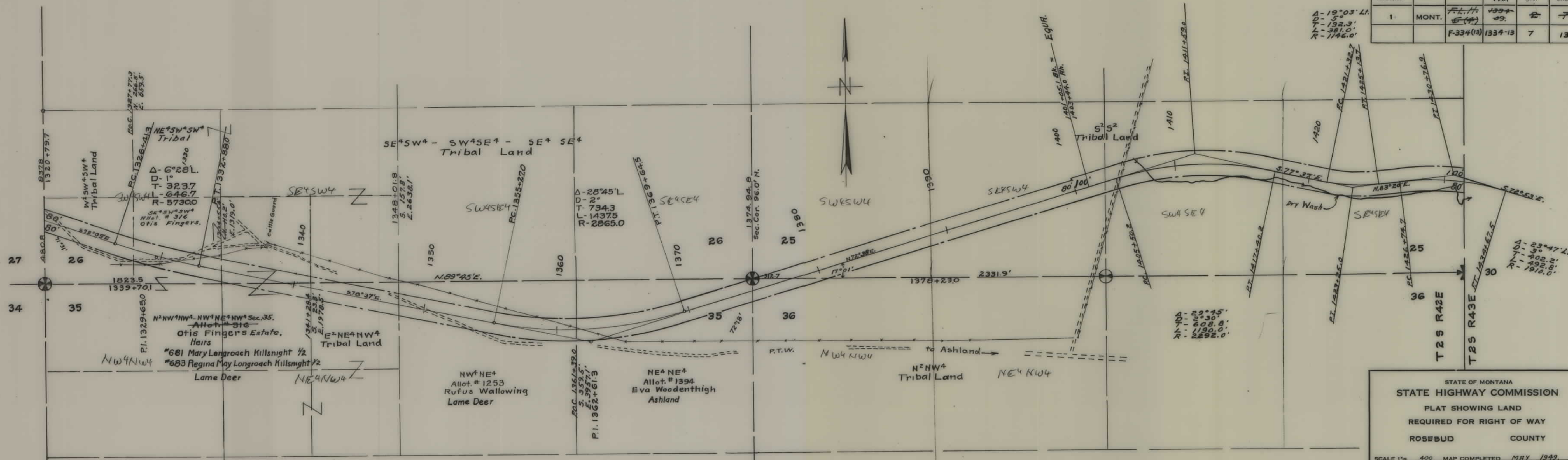
Attest: *William Walling* Secretary
Refus Wallowing President of the Tribal Council

STATE OF MONTANA
 STATE HIGHWAY COMMISSION
 PLAT SHOWING LAND
 REQUIRED FOR RIGHT OF WAY
 ROSEBUD COUNTY

SCALE 1" = 400' MAP COMPLETED MAY 1949.
 DESCRIPTIONS WRITTEN BY J.R.P. DATE 5-5-49
 DESCRIPTIONS CHECKED BY E.O.P. DATE 5-5-49

APPROVED BY _____ PLANS DEPT.
 APPROVED BY _____ R/W ENGINEER

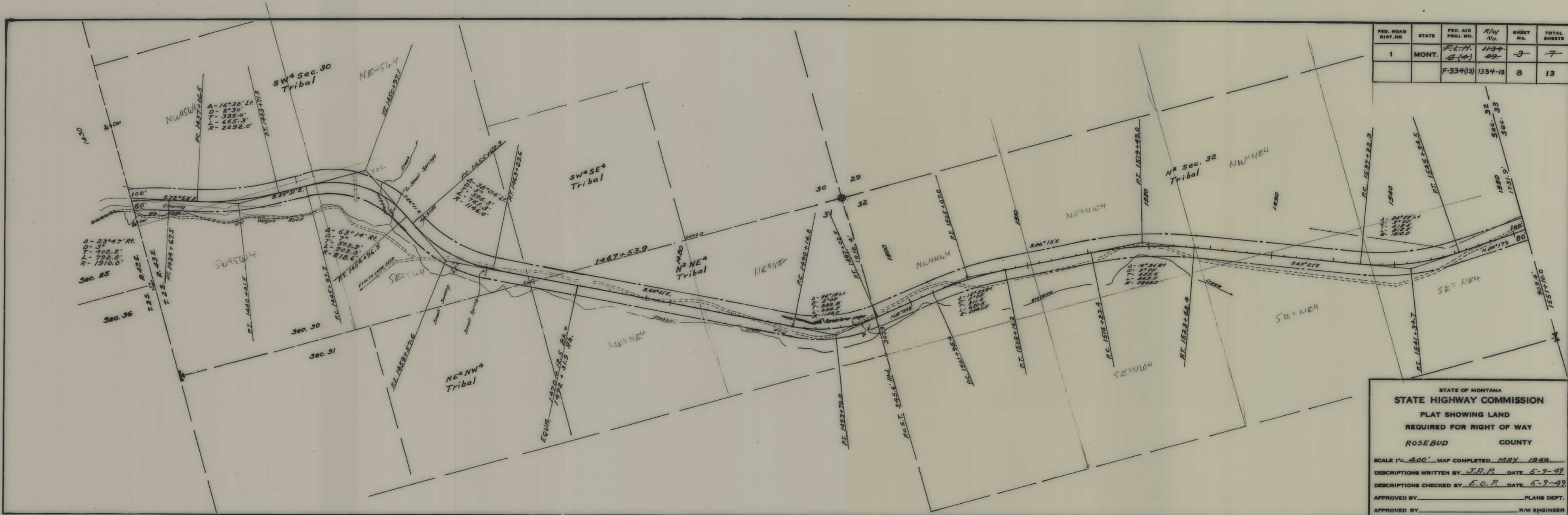
FED. ROAD DIST. NO.	STATE	FED. AID PROJ. NO.	R/W No.	SHEET No.	TOTAL SHEETS
1	MONT.	F-334(13)	1334-13	7	13



STATE OF MONTANA
 STATE HIGHWAY COMMISSION
 PLAT SHOWING LAND
 REQUIRED FOR RIGHT OF WAY
 ROSEBUD COUNTY

SCALE 1" = 400' MAP COMPLETED MAY 1949
 DESCRIPTIONS WRITTEN BY J. F. P. DATE 5-9-49
 DESCRIPTIONS CHECKED BY E. O. P. DATE 5-9-49
 APPROVED BY _____ PLANS DEPT.
 APPROVED BY _____ R/W ENGINEER

FED. ROAD DIST. NO.	STATE	FED. AID PROJ. NO.	R/W No.	SHEET No.	TOTAL SHEETS
1	MONT.	F.L.H. 6(4)	1334-13	3	7
		F-334(13)	1334-13	8	13

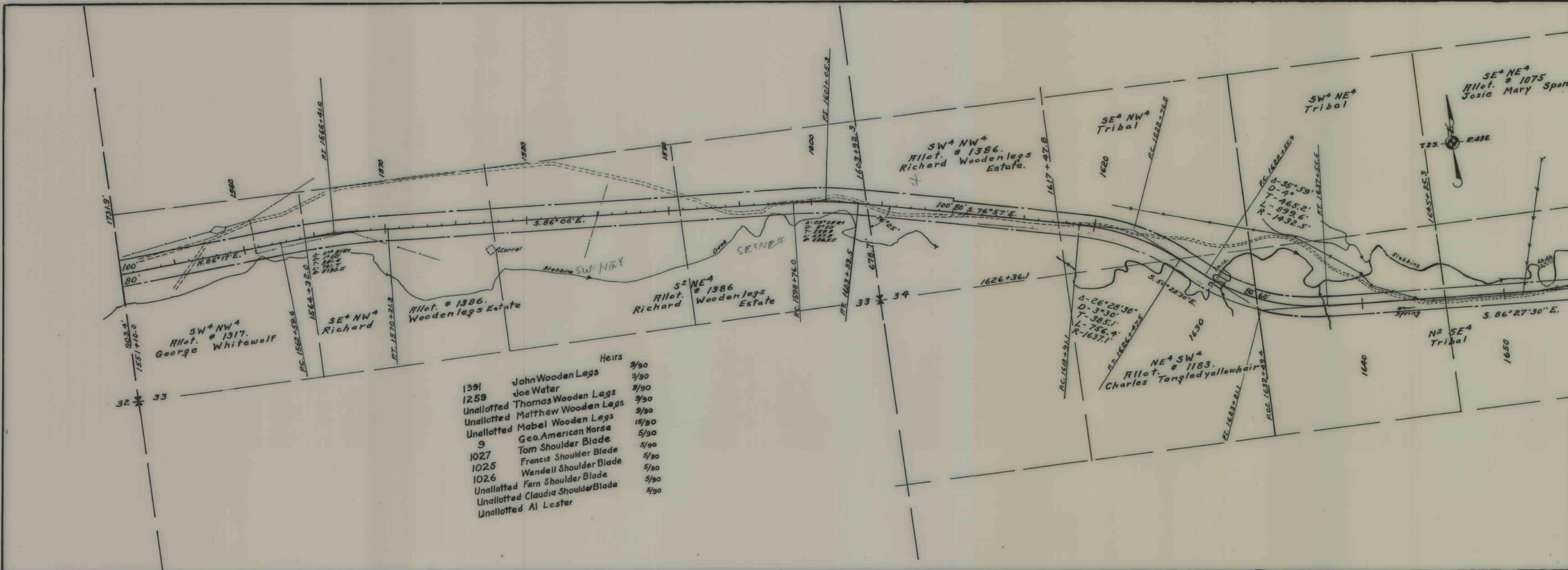


STATE OF MONTANA
STATE HIGHWAY COMMISSION
 PLAT SHOWING LAND
 REQUIRED FOR RIGHT OF WAY
 ROSEBUD COUNTY

SCALE 1" = 200' MAP COMPLETED MAY 1949.
 DESCRIPTIONS WRITTEN BY J.H.P. DATE 5-9-49
 DESCRIPTIONS CHECKED BY E.O.P. DATE 5-9-49

APPROVED BY _____ PLANS DEPT.
 APPROVED BY _____ R/W ENGINEER

FED. ROAD DIST. NO.	STATE	FED. AID PROJ. NO.	R/W No.	SHEET NO.	TOTAL SHEETS
1	MONT.	F.L.H. 1334-08	614	4	7
		F-334(13) 1334-13		9	13



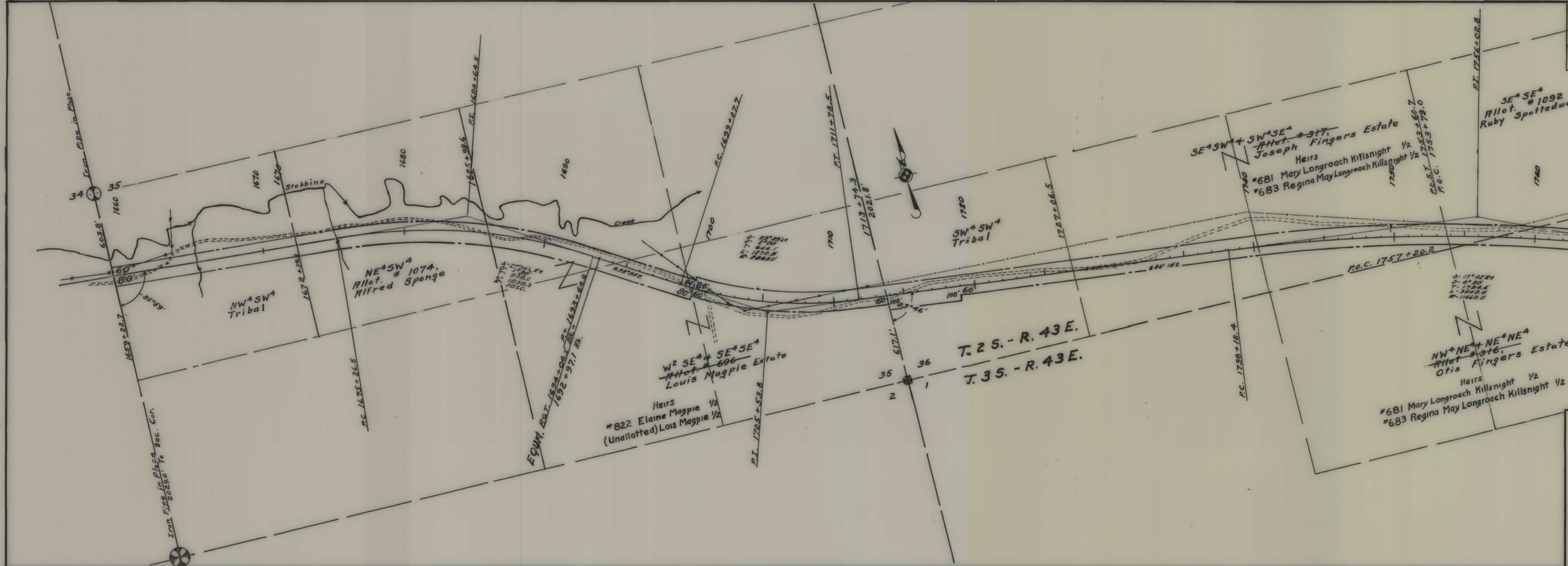
	Heirs	
1391	John Wooden Legs	9/90
1259	Joe Water	9/90
Unallotted	Thomas Wooden Legs	9/90
Unallotted	Matthew Wooden Legs	9/90
Unallotted	Mabel Wooden Legs	15/90
9	Geo. American Horse	5/90
1027	Tom Shoulder Blade	5/90
1025	Francis Shoulder Blade	5/90
1026	Wendell Shoulder Blade	5/80
Unallotted	Fern Shoulder Blade	5/90
Unallotted	Claudia Shoulder Blade	5/90
Unallotted	Al Lester	

STATE OF MONTANA
STATE HIGHWAY COMMISSION
 PLAT SHOWING LAND
 REQUIRED FOR RIGHT OF WAY
 ROSEBUD COUNTY

SCALE 1" = 400'. MAP COMPLETED MAY 1949.
 DESCRIPTIONS WRITTEN BY J.H.P. DATE 5-9-49.
 DESCRIPTIONS CHECKED BY E.O.P. DATE 5-9-49.

APPROVED BY _____ PLANS DEPT.
 APPROVED BY _____ R/W ENGINEER

FED. ROAD DIST. NO.	STATE	FED. AID PROJ. NO.	R/W No.	SHEET No.	TOTAL SHEETS
1	MONT.	F.L.H. 5(4)	1334-13	5	7
		F-334(13)	1334-13	10	13



STATE OF MONTANA
 STATE HIGHWAY COMMISSION
 PLAT SHOWING LAND
 REQUIRED FOR RIGHT OF WAY
 ROSEBUD COUNTY

SCALE 1" = 100' MAP COMPLETED MAY 1949.
 DESCRIPTIONS WRITTEN BY J.A.P. DATE 5-9-49.
 DESCRIPTIONS CHECKED BY E.O.P. DATE 5-9-49.
 APPROVED BY _____ PLANS DEPT.
 APPROVED BY _____ R/W ENGINEER

T. 25. - R. 43 E.
 T. 25. - R. 44 E.
 T. 35. - R. 43 E.
 T. 35. - R. 44 E.

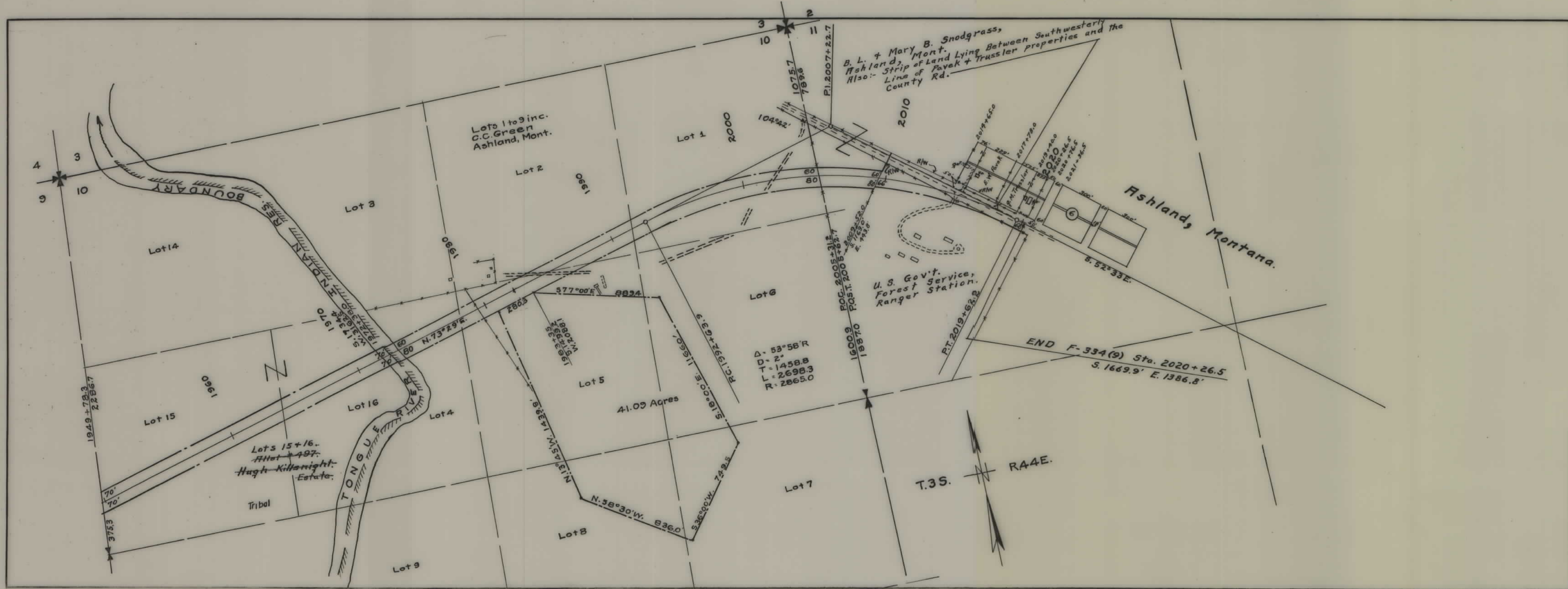
FED. ROAD DIST. NO.	STATE	FED. AID PROJ. NO.	R/W No.	SHEET No.	TOTAL SHEETS
1	MONT.	F. L. H. 6 (4)	1334-09	6	7
		F-334(3)	1334-13	11	13



STATE OF MONTANA
STATE HIGHWAY COMMISSION
 PLAT SHOWING LAND
 REQUIRED FOR RIGHT OF WAY
 ROSEBUD COUNTY

SCALE 1" = 400' MAP COMPLETED MAY 1949
 DESCRIPTIONS WRITTEN BY J. H. P. DATE 5-9-49
 DESCRIPTIONS CHECKED BY J. H. P. DATE 5-27-49

APPROVED BY _____ PLANS DEPT.
 APPROVED BY _____ R/W ENGINEER



FED. ROAD DIST. NO.	STATE	FED. AID PROJ. NO.	R/W No.	SHEET NO.	TOTAL SHEETS
1	MONT.	F-334(9)	1334-09	2	2
		F-334(13)	1334-13	13	13

STATE OF MONTANA
 STATE HIGHWAY COMMISSION
 PLAT SHOWING LAND
 REQUIRED FOR RIGHT OF WAY
 ROSEBUD COUNTY

SCALE 1" = 400' MAP COMPLETED MAY 1948
 DESCRIPTIONS WRITTEN BY M.B. DATE 5-10-49
 DESCRIPTIONS CHECKED BY M.B. DATE 5-10-49
 APPROVED BY _____ PLANS DEPT.
 APPROVED BY _____ R/W ENGINEER