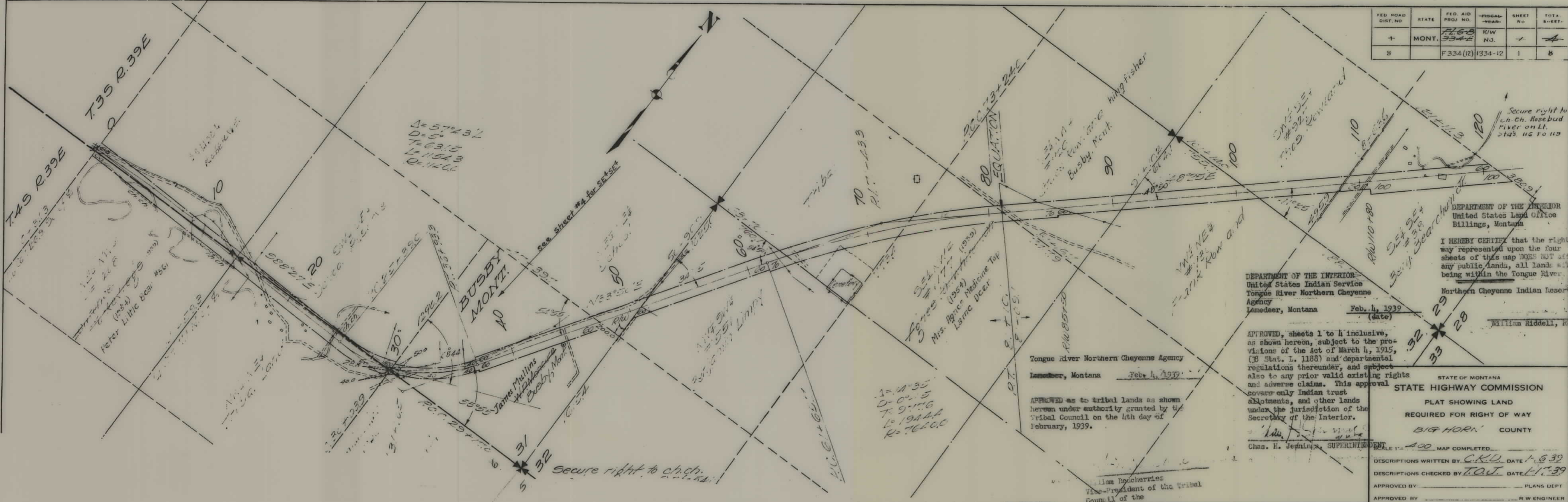


PLANS  
NOT  
TO  
SCALE



FED. ROAD DIST. NO.	STATE	FED. AID PROJ. NO.	FISCAL YEAR	SHEET NO.	TOTAL SHEETS
8	MONT.	F268 334E	R/W NO.	1	8

$\Delta = 57^{\circ} 43'$   
 $D = 5'$   
 $T = 63.15$   
 $L = 1154.3$   
 $R = 142.0$

see sheet #4 for SE 4564

**BUSBY MONT.**

Tongue River Northern Cheyenne Agency  
Lame Deer, Montana Feb. 4, 1939

APPROVED as to tribal lands as shown hereon under authority granted by the Tribal Council on the 4th day of February, 1939.

William Bocherries  
Vice-President of the Tribal Council of the

DEPARTMENT OF THE INTERIOR  
United States Indian Service  
Tongue River Northern Cheyenne Agency  
Lame Deer, Montana Feb. 4, 1939 (date)

APPROVED, sheets 1 to 8 inclusive, as shown hereon, subject to the provisions of the Act of March 4, 1915, (38 Stat. L. 1188) and departmental regulations thereunder, and subject also to any prior valid existing rights and adverse claims. This approval covers only Indian trust allotments, and other lands under the jurisdiction of the Secretary of the Interior.

Chas. E. Jennings, SUPERINTENDENT

DEPARTMENT OF THE INTERIOR  
United States Land Office  
Billings, Montana

I HEREBY CERTIFY that the right of way represented upon the four sheets of this map DOES NOT affect any public lands, all lands affected being within the Tongue River Northern Cheyenne Indian Reservation.

William Riddell, REGISTER

STATE OF MONTANA  
STATE HIGHWAY COMMISSION  
PLAT SHOWING LAND  
REQUIRED FOR RIGHT OF WAY  
BIG HORN COUNTY

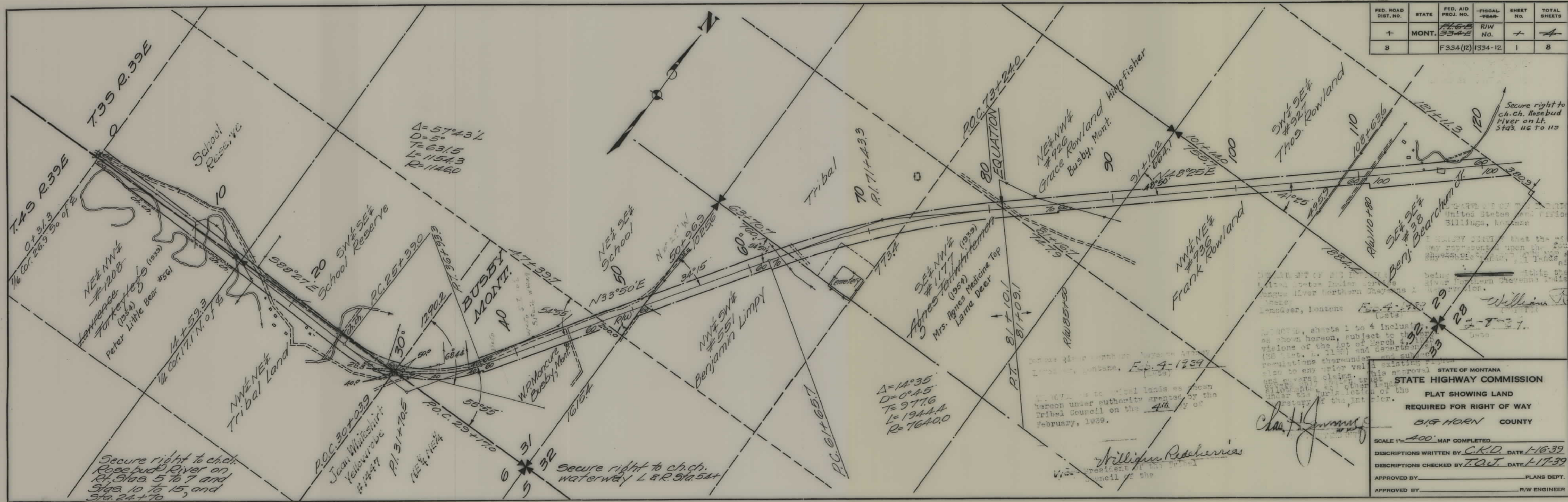
SCALE 1" = 400' MAP COMPLETED  
 DESCRIPTIONS WRITTEN BY C.K.D. DATE 1-6-39  
 DESCRIPTIONS CHECKED BY T.O.J. DATE 1-17-39  
 APPROVED BY \_\_\_\_\_ PLANS DEPT  
 APPROVED BY \_\_\_\_\_ R/W ENGINEER

Secure right to ch. ch.

Secure right to Ch. Ch. Rosebud River on Lt. 2143 US to 119

$\Delta = 14^{\circ} 35'$   
 $D = 0^{\circ} 5'$   
 $T = 9.156$   
 $L = 1944.4$   
 $R = 766.0$

FED. ROAD DIST. NO.	STATE	FED. AID PROJ. NO.	FISCAL YEAR	SHEET NO.	TOTAL SHEETS
8	MONT.	F334	1334-12	1	8



Secure right to ch. ch. Rosebud River on Lt. Stas. 10 to 15, and Sta. 24+70

Secure right to ch. ch. Rosebud River on Lt. Stas. 116 to 119

STATE OF MONTANA  
 DEPARTMENT OF PUBLIC LANDS  
 BILLINGS, MONTANA

DEPARTMENT OF THE INTERIOR  
 UNITED STATES GEOLOGICAL SURVEY  
 LANGUE RIVER NORTHERN CHEYENNE INDIAN RESERVE  
 BILLINGS, MONTANA

STATE OF MONTANA  
 STATE HIGHWAY COMMISSION  
 PLAT SHOWING LAND  
 REQUIRED FOR RIGHT OF WAY  
 BIG HORN COUNTY

SCALE 1"=400' MAP COMPLETED

DESCRIPTIONS WRITTEN BY C.K.D. DATE 1-16-39

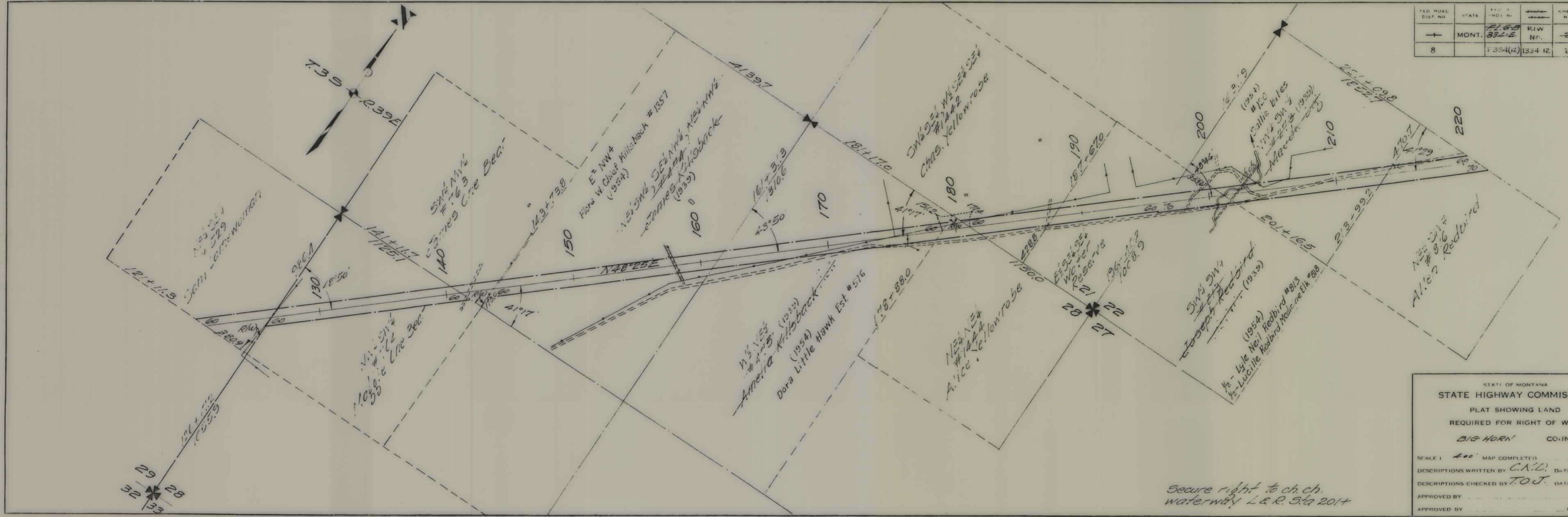
DESCRIPTIONS CHECKED BY T.O.J. DATE 1-17-39

APPROVED BY \_\_\_\_\_ PLANS DEPT.

APPROVED BY \_\_\_\_\_ R/W ENGINEER

William Riddell  
 Chas. H. ...

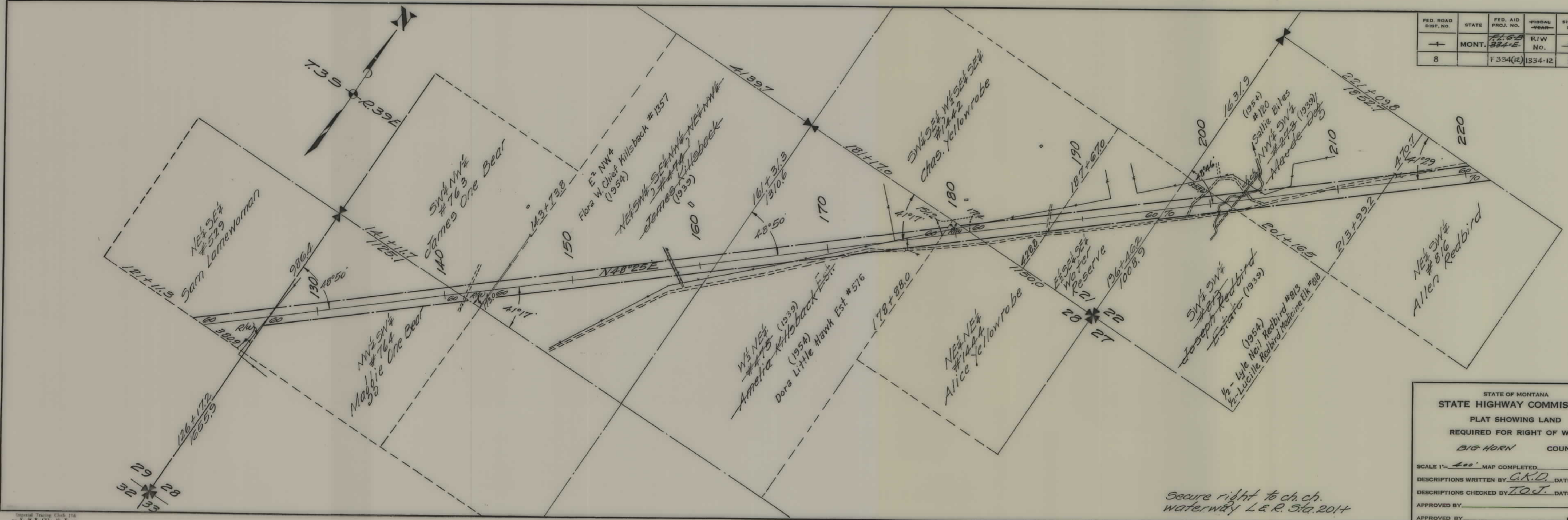
FED. ROAD DIST. NO.	STATE	FED. A. PROJ. NO.	R.I.W. NO.	SHEET NO.	TOTAL SHEETS
8	MONT.	F 334(12)	1334 12	2	8



Secure right to ch. ch.  
waterway L & R. 5/1 2014

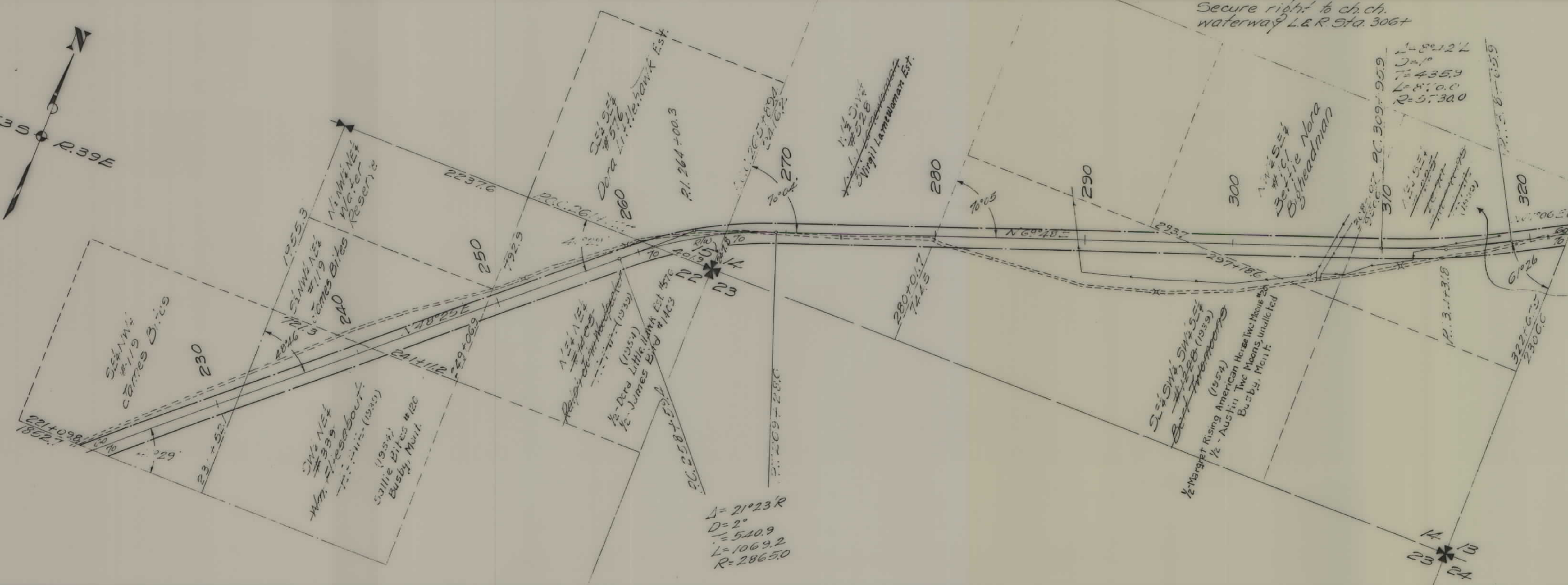
STATE OF MONTANA  
 STATE HIGHWAY COMMISSION  
 PLAT SHOWING LAND  
 REQUIRED FOR RIGHT OF WAY  
 BIG HORN CO. IN T. 1  
 SCALE 1" = 400' MAP COMPLETED  
 DESCRIPTIONS WRITTEN BY C.A.D. DATE 1-2-39  
 DESCRIPTIONS CHECKED BY T.O.J. DATE 1-24-39  
 APPROVED BY \_\_\_\_\_ PLANS DEPT  
 APPROVED BY \_\_\_\_\_ R.W. ENGINEER

FED. ROAD DIST. NO.	STATE	FED. AID PROJ. NO.	FISCAL YEAR	SHEET NO.	TOTAL SHEETS
8	MONT.	F 334(12)	1934-12	2	8



STATE OF MONTANA  
 STATE HIGHWAY COMMISSION  
 PLAT SHOWING LAND  
 REQUIRED FOR RIGHT OF WAY  
 BIG HORN COUNTY

SCALE 1" = 400' MAP COMPLETED \_\_\_\_\_  
 DESCRIPTIONS WRITTEN BY C.K.D. DATE 1-16-39  
 DESCRIPTIONS CHECKED BY T.O.J. DATE 1-24-39  
 APPROVED BY \_\_\_\_\_ PLANS DEPT.  
 APPROVED BY \_\_\_\_\_ R/W ENGINEER



FED. ROAD DIST. NO.	STATE	FED. AID PROJ. NO.	KIW NO.	SHEET NO.	TOTAL SHEETS
8	MONT.	F.L.G.B. 354-E	KIW No. 1334-12	3	8

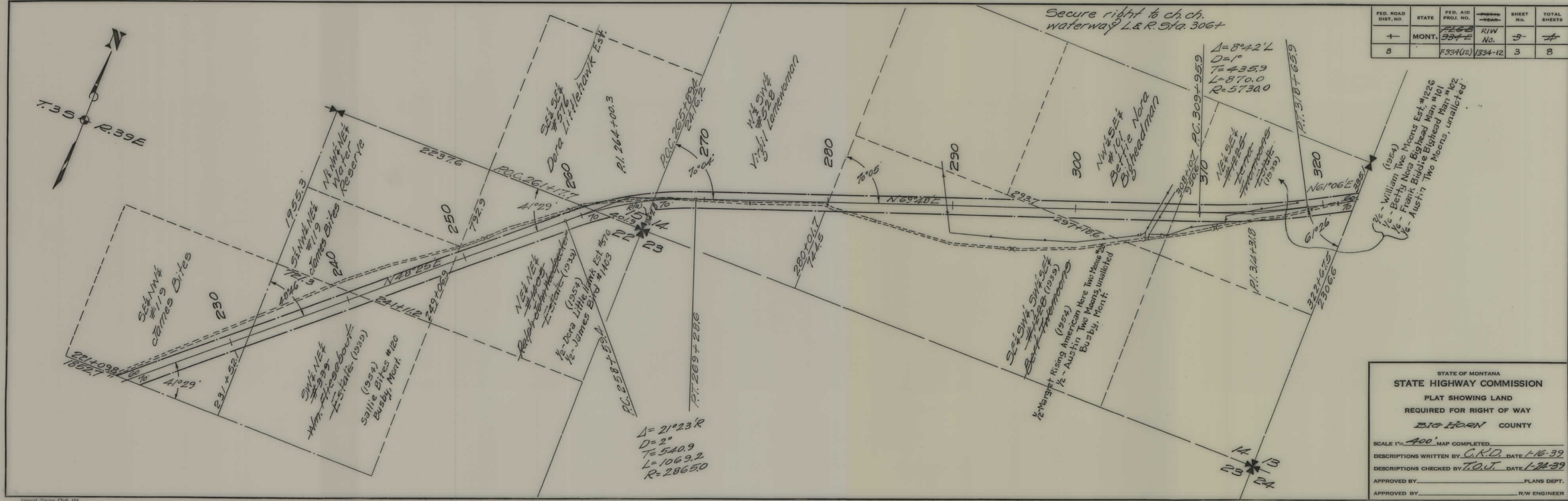
STATE OF MONTANA  
 STATE HIGHWAY COMMISSION  
 PLAT SHOWING LAND  
 REQUIRED FOR RIGHT OF WAY  
 BIG HORN COUNTY

SCALE: 1" = 400' MAP COMPLETED \_\_\_\_\_  
 DESCRIPTIONS WRITTEN BY G.R.D. DATE 1-14-39  
 DESCRIPTIONS CHECKED BY T.O.J. DATE 1-24-39

APPROVED BY \_\_\_\_\_ PLANS DEPT.  
 APPROVED BY \_\_\_\_\_ R.W. ENGINEER



FED. ROAD DIST. NO.	STATE	FED. AID PROJ. NO.	YEAR	SHEET NO.	TOTAL SHEETS
8	MONT.	F. 334(12)	1934-12	3	8



STATE OF MONTANA  
**STATE HIGHWAY COMMISSION**  
 PLAT SHOWING LAND  
 REQUIRED FOR RIGHT OF WAY  
**BIG HORN COUNTY**

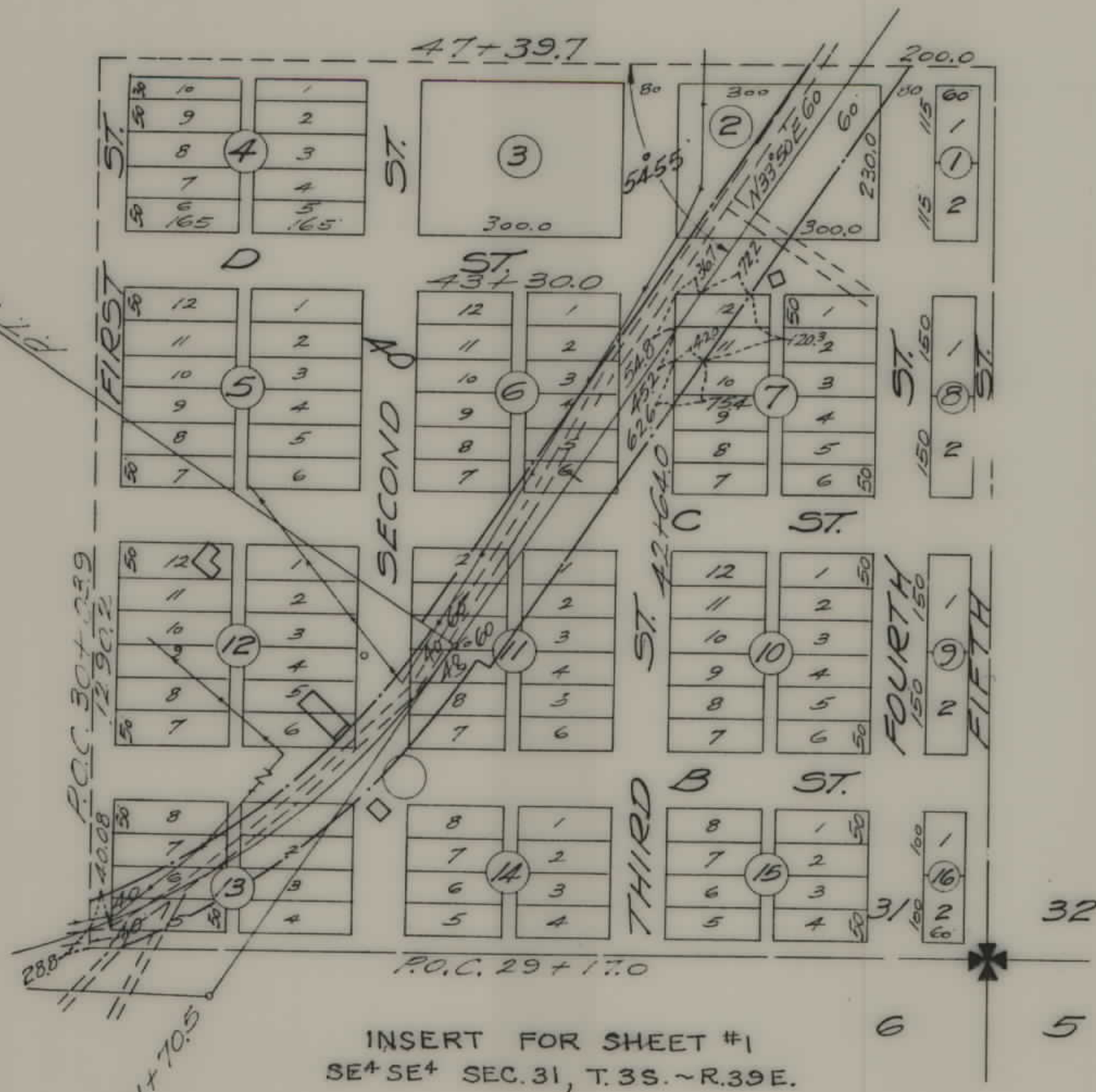
SCALE 1" = 400' MAP COMPLETED \_\_\_\_\_  
 DESCRIPTIONS WRITTEN BY G.R.D. DATE 1-16-39  
 DESCRIPTIONS CHECKED BY T.O.J. DATE 1-24-39  
 APPROVED BY \_\_\_\_\_ PLANS DEPT.  
 APPROVED BY \_\_\_\_\_ R/W ENGINEER

# BUSBY



T.35 R.39E

FED. ROAD DIST. NO.	STATE	FED. AID PROJ. NO.	CONTRACT NO.	SHEET NO.	TOTAL SHEETS
8	MONT.	F334E	K/W No.	4	8



Block 7, Lots 9, 10, 11 & 12 Two Moons Park, U.S. Govt, Cheyenne Tribe (1954)  
 Block 7 Lots 9-10, U.S. Govt. (1939)  
 # 7 - # 11-12, F.A. East and Co  
 Hathaway, Mont. (1939)  
 Block 2, School Reserve  
 Balance of Busby Townsite, ~~Walker P. Moncreaf~~ <sup>James Mullins</sup>  
 Busby, Mont.

STATE OF MONTANA  
 STATE HIGHWAY COMMISSION  
 PLAT SHOWING LAND  
 REQUIRED FOR RIGHT OF WAY  
 BIG HORN COUNTY

SCALE: 200' MAP COMPLETED  
 DESCRIPTIONS WRITTEN BY C.A.D. DATE 1-16-39  
 DESCRIPTIONS CHECKED BY T.O.J. DATE 1-17-39

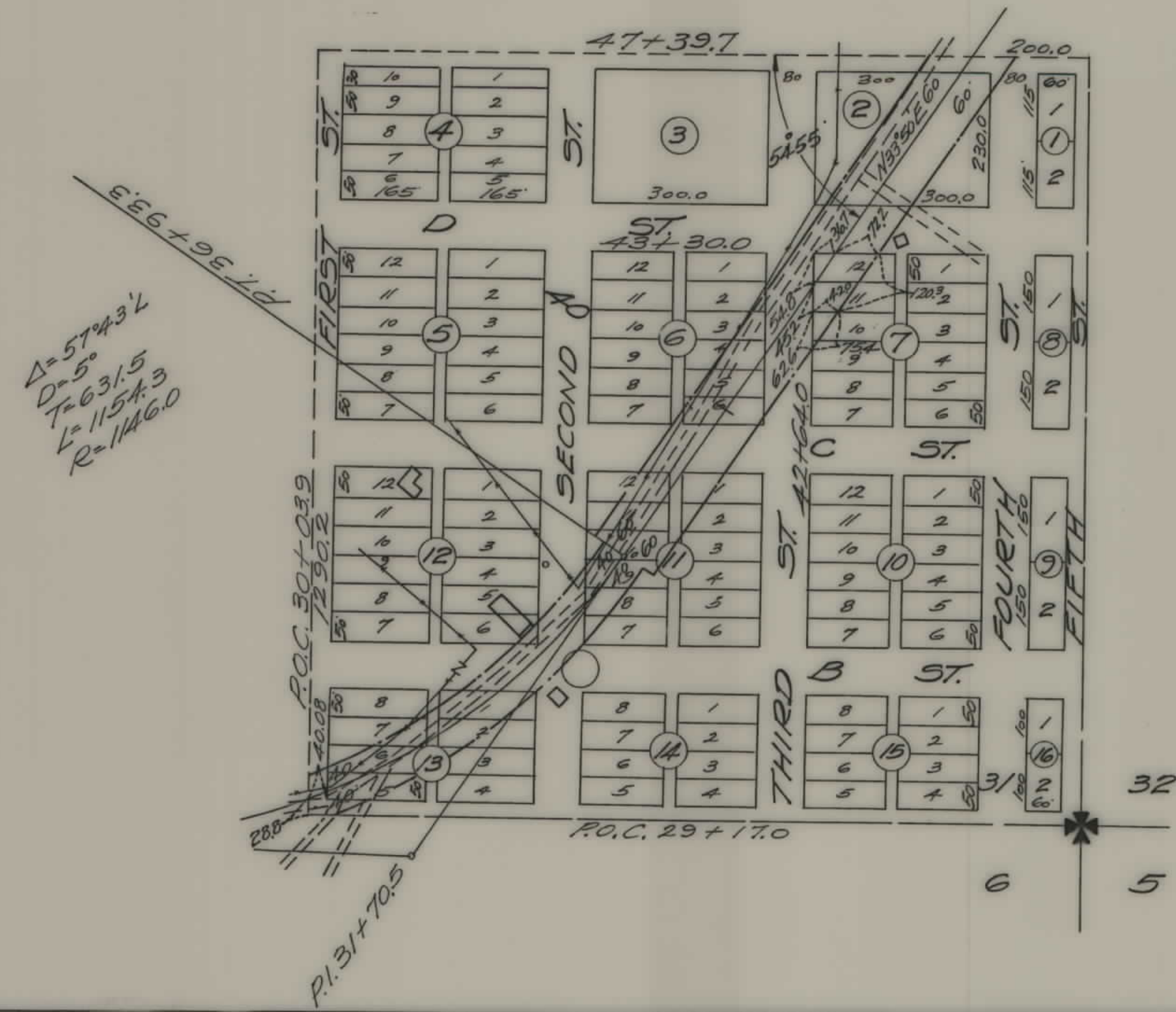
APPROVED BY \_\_\_\_\_ PLANS DEPT  
 APPROVED BY \_\_\_\_\_ R.W. ENGINEER



# BUSBY



FED. ROAD DIST. NO.	STATE	FED. AID PROJ. NO.	FISCAL YEAR	SHEET NO.	TOTAL SHEETS
8	MONT.	F.334(12)	1334-12	4	8



Block 7, Lots 9, 10, 11 & 12 Two Moons Park, U.S. Govt, Cheyenne Tribe (1954)  
~~Block 7 Lots 9-10, U.S. Govt (1939)~~  
~~" 7 " 11-12, F.A. East and Co~~  
~~Hathaway, Mont. (1939)~~  
 Block 2, School Reserve  
 Balance of Busby Townsite, Walker P. Moncure  
 Busby, Mont.

STATE OF MONTANA  
 STATE HIGHWAY COMMISSION  
 PLAT SHOWING LAND  
 REQUIRED FOR RIGHT OF WAY  
 BIG HORN COUNTY

SCALE 1"=200' MAP COMPLETED \_\_\_\_\_  
 DESCRIPTIONS WRITTEN BY C.K.D. DATE 1-16-39  
 DESCRIPTIONS CHECKED BY T.O.J. DATE 1-17-39  
 APPROVED BY \_\_\_\_\_ PLANS DEPT.  
 APPROVED BY \_\_\_\_\_ R/W ENGINEER

Tongue River Northern Cheyenne Agency  
LAMEDEER, MONTANA

July 25, 1940  
(date)

APPROVED as to tribal land as shown hereon under authority granted by the Tribal Council on the 19 day of September, 1938.

WILLIAM REDCHERRIES  
William Redcheries  
Vice-President of the Tribal Council

DEPARTMENT OF THE INTERIOR  
United States Indian Service  
Tongue River Northern Cheyenne Agency  
LAMEDEER, MONTANA

July 25, 1940  
(date)

APPROVED, Sheets 1 to 9, inclusive, as shown hereon, subject to the provisions of the Act of March 4, 1915 (38 Stat. L. 1188) and departmental regulations thereunder, and subject also to any prior valid existing rights and adverse claims. This approval covers only Indian trust allotments, and other lands under the jurisdiction of the Secretary of the Interior.

CHAS. H. JENNINGS  
SUPERINTENDENT

322+675 END FL. G-B (FAP 334-E)  
322+675 BEG FAP 334-F

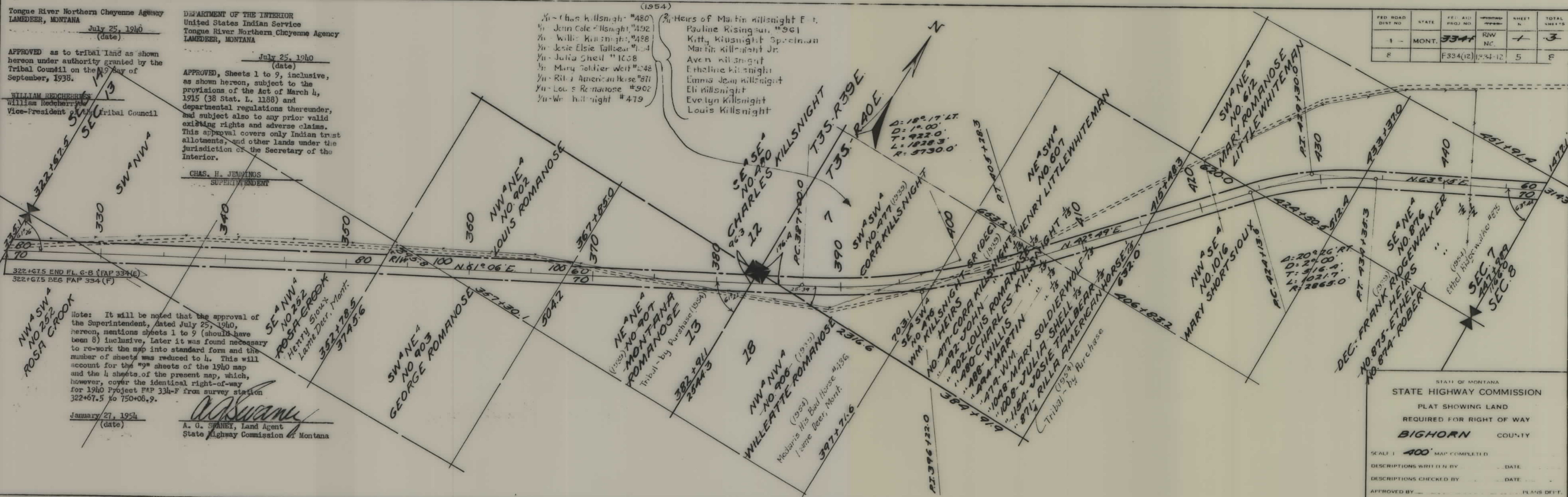
NW 1/4 SW 1/4  
NO 252  
ROSA CROOK

Note: It will be noted that the approval of the Superintendent, dated July 25, 1940, hereon, mentions sheets 1 to 9 (should have been 8) inclusive. Later it was found necessary to re-work the map into standard form and the number of sheets was reduced to 4. This will account for the "9" sheets of the 1940 map and the 4 sheets of the present map, which, however, cover the identical right-of-way for 1940 Project FAP 334-F from survey station 322+67.5 to 750+08.9.

January 27, 1954  
(date)

A. G. SPANEY, Land Agent  
State Highway Commission of Montana

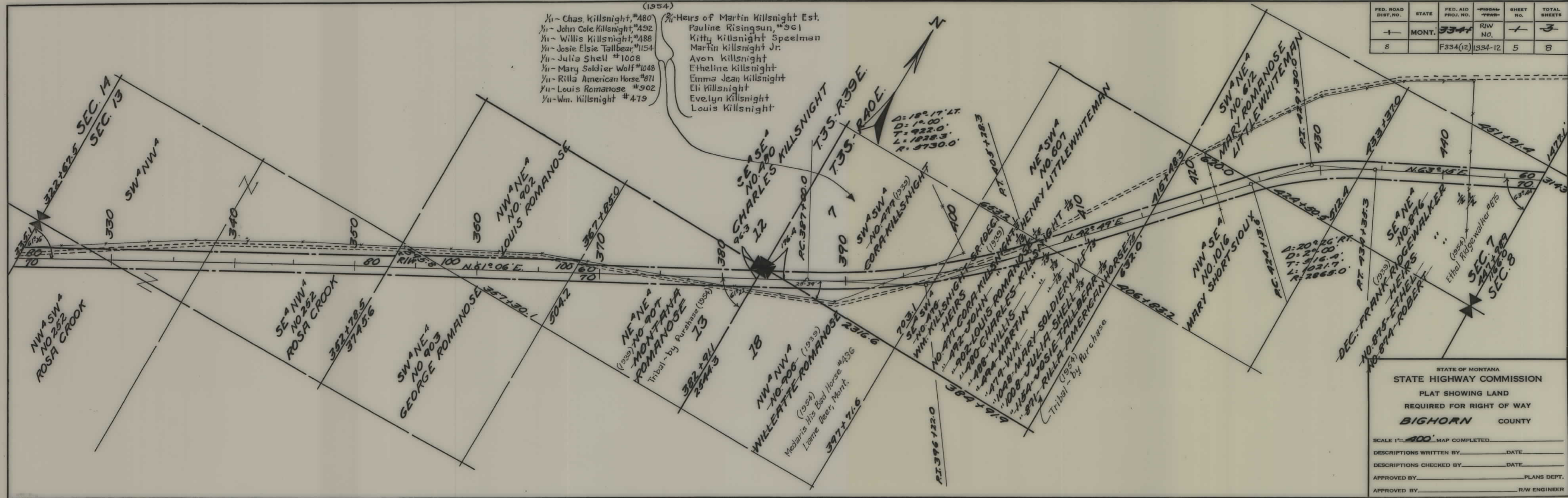
(1954)  
Heirs of Martin Killnight E. t.  
Pauline Risinger, #961  
Kitty Killnight Spradman  
Martin Killnight Jr.  
Aven Killnight  
Eveline Killnight  
Emma Jean Killnight  
Eli Killnight  
Evelyn Killnight  
Louis Killnight



FED. ROAD DIST. NO.	STATE	FED. AID PROJ. NO.	PLAT NO.	SHEET N.	TOTAL SHEETS
1	MONT.	334	RW NC	1	3
2		F334(12)	12-12	5	8

STATE OF MONTANA  
STATE HIGHWAY COMMISSION  
PLAT SHOWING LAND  
REQUIRED FOR RIGHT OF WAY  
BIGHORN COUNTY

SCALE 1" = 400' MAP COMPLETED  
DESCRIPTIONS WRITTEN BY \_\_\_\_\_ DATE \_\_\_\_\_  
DESCRIPTIONS CHECKED BY \_\_\_\_\_ DATE \_\_\_\_\_  
APPROVED BY \_\_\_\_\_ PLANS DEPT.  
APPROVED BY \_\_\_\_\_ R.W. ENGINEER



(1954)

X1 - Chas. Killsnight, #480  
 X11 - John Cole Killsnight, #492  
 X11 - Willis Killsnight, #488  
 X11 - Josie Elsie Tallbear, #154  
 X11 - Julia Shell, #1008  
 X11 - Mary Soldier Wolf, #1048  
 X11 - Rilla American Horse, #871  
 X11 - Louis Romanose, #902  
 X11 - Wm. Killsnight, #479

X2 - Heirs of Martin Killsnight Est.  
 Pauline Risingsun, #961  
 Kitty Killsnight Speelman  
 Martin Killsnight Jr.  
 Avon Killsnight  
 Etheline Killsnight  
 Emma Jean Killsnight  
 Eli Killsnight  
 Evelyn Killsnight  
 Louis Killsnight

FED. ROAD DIST. NO.	STATE	FED. AID PROJ. NO.	FISCAL YEAR	SHEET NO.	TOTAL SHEETS
1	MONT.	F3341	R/W NO.	1	3
8		F334(12)	1334-12	5	8

STATE OF MONTANA  
 STATE HIGHWAY COMMISSION  
 PLAT SHOWING LAND  
 REQUIRED FOR RIGHT OF WAY  
 BIGHORN COUNTY

SCALE 1" = 400' MAP COMPLETED \_\_\_\_\_

DESCRIPTIONS WRITTEN BY \_\_\_\_\_ DATE \_\_\_\_\_

DESCRIPTIONS CHECKED BY \_\_\_\_\_ DATE \_\_\_\_\_

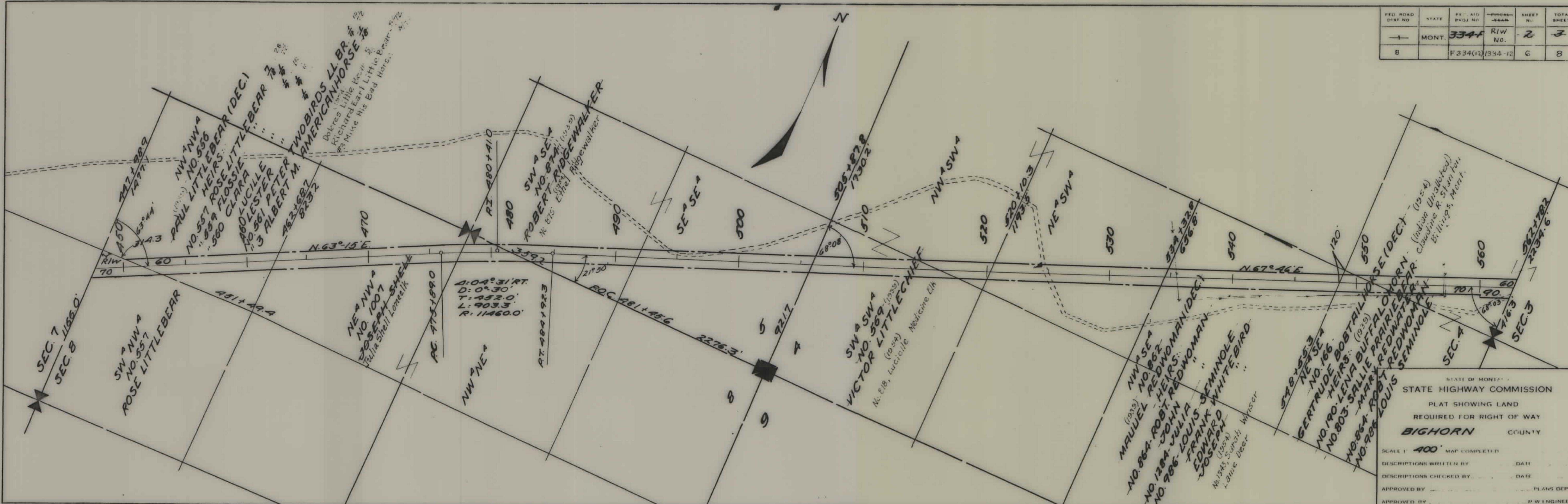
APPROVED BY \_\_\_\_\_ PLANS DEPT.

APPROVED BY \_\_\_\_\_ R/W ENGINEER

Imperial Tracing Cloth 114  
 K & T CO., N. Y. - 8-19

5

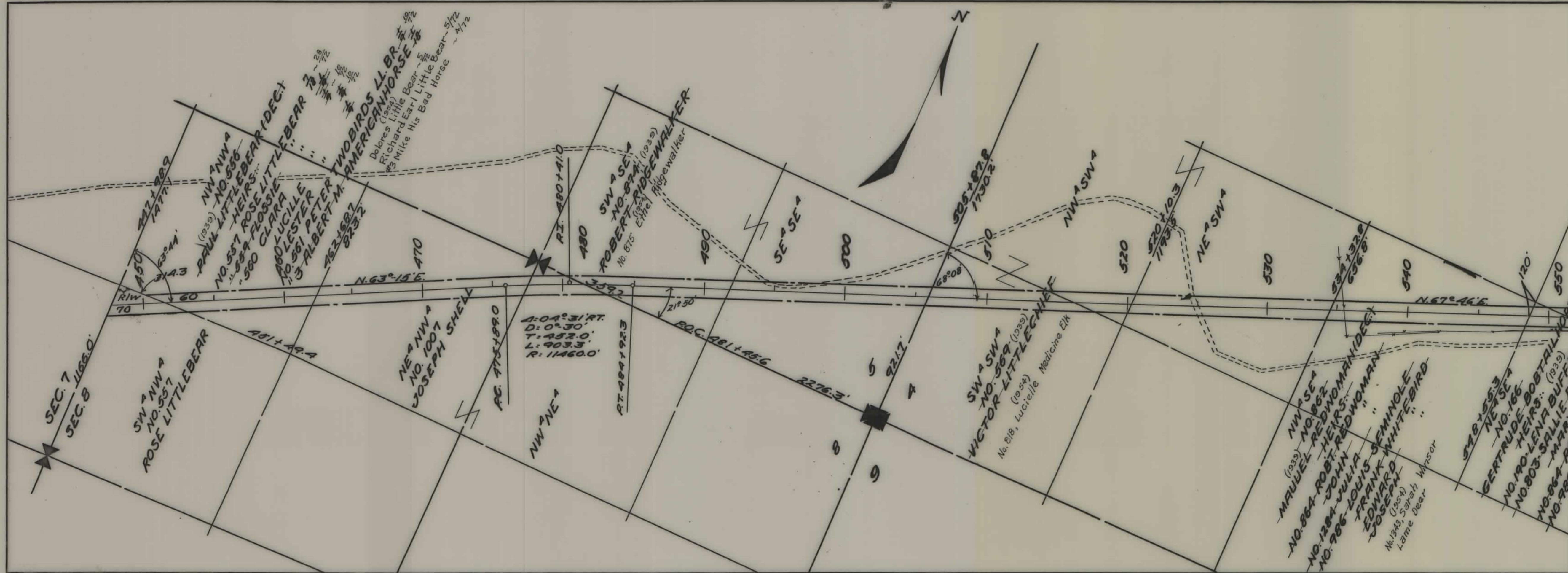
FED. ROAD DIST. NO.	STATE	FED. AID PROJ. NO.	FISCAL YEAR	SHEET NO.	TOTAL SHEETS
8	MONT.	334F	R/W No.	2	3
		F334(12)	1334-12	6	8



STATE OF MONTANA  
 STATE HIGHWAY COMMISSION  
 PLAT SHOWING LAND  
 REQUIRED FOR RIGHT OF WAY  
**BIGHORN** COUNTY

SCALE 1" = 400' MAP COMPLETED  
 DESCRIPTIONS WRITTEN BY \_\_\_\_\_ DATE \_\_\_\_\_  
 DESCRIPTIONS CHECKED BY \_\_\_\_\_ DATE \_\_\_\_\_  
 APPROVED BY \_\_\_\_\_ PLANS DEPT  
 APPROVED BY \_\_\_\_\_ P.W. ENGINEER

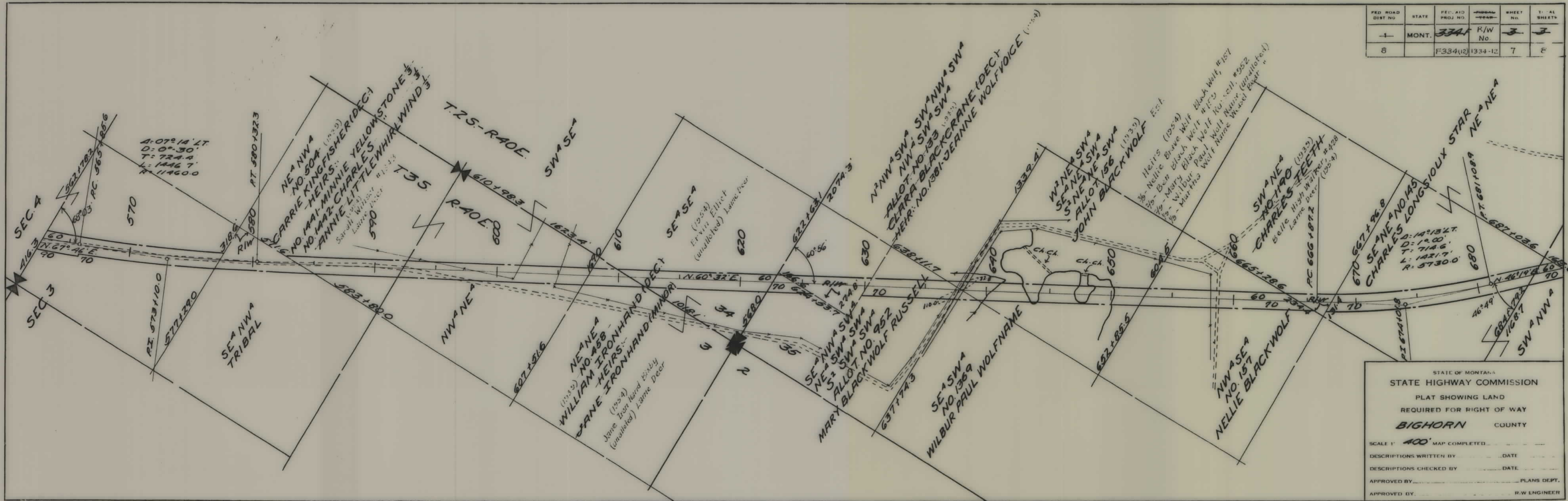
FED. ROAD DIST. NO.	STATE	FED. AID PROJ. NO.	FISGAL- YEAR	SHEET No.	TOTAL SHEETS
8	MONT.	3341	R/W No.	2	3
		F 334(12)	1334-12	6	8



$A: 04^{\circ} 31' RT.$   
 $D: 0^{\circ} 30'$   
 $T: 452.0'$   
 $L: 903.3'$   
 $R: 11460.0'$

STATE OF MONTANA  
 STATE HIGHWAY COMMISSION  
 PLAT SHOWING LAND  
 REQUIRED FOR RIGHT OF WAY  
**BIGHORN** COUNTY

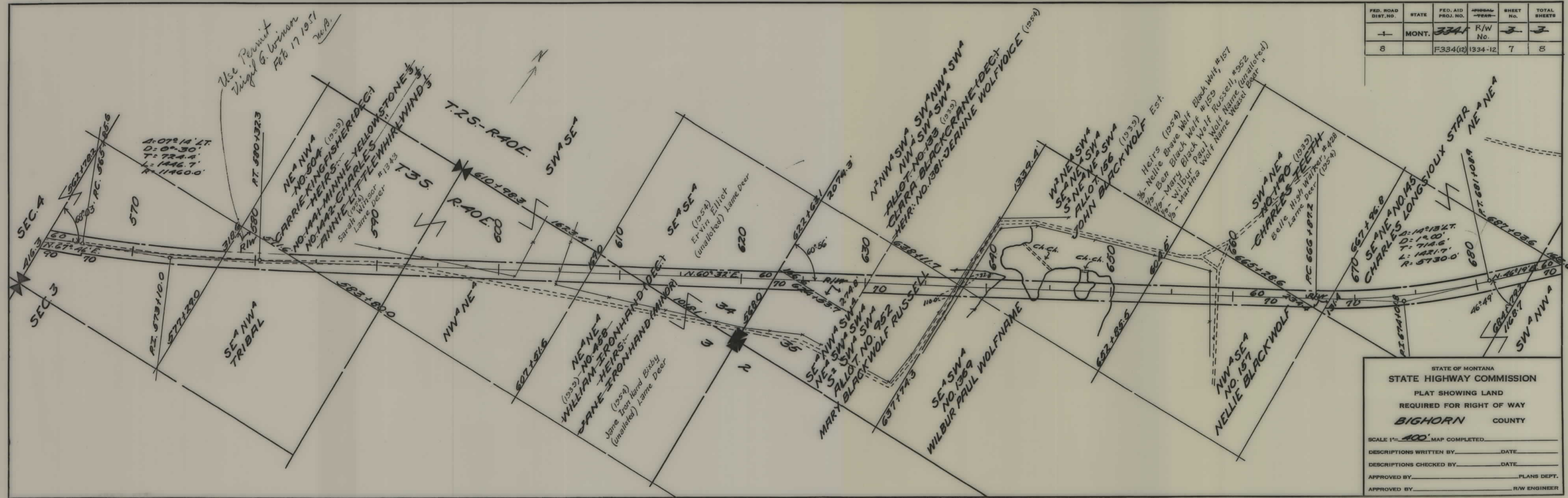
SCALE 1" = 400' MAP COMPLETED \_\_\_\_\_  
 DESCRIPTIONS WRITTEN BY \_\_\_\_\_ DATE \_\_\_\_\_  
 DESCRIPTIONS CHECKED BY \_\_\_\_\_ DATE \_\_\_\_\_  
 APPROVED BY \_\_\_\_\_ PLANS DEPT.  
 APPROVED BY \_\_\_\_\_ R/W ENGINEER



FED. ROAD DIST. NO.	STATE	FED. AID PROJ. NO.	FISCAL YEAR	SHEET NO.	TOTAL SHEETS
8	MONT.	F334(12)	1334-12	7	8

STATE OF MONTANA  
 STATE HIGHWAY COMMISSION  
 PLAT SHOWING LAND  
 REQUIRED FOR RIGHT OF WAY  
 BIGHORN COUNTY

SCALE 1" = 400' MAP COMPLETED \_\_\_\_\_  
 DESCRIPTIONS WRITTEN BY \_\_\_\_\_ DATE \_\_\_\_\_  
 DESCRIPTIONS CHECKED BY \_\_\_\_\_ DATE \_\_\_\_\_  
 APPROVED BY \_\_\_\_\_ PLANS DEPT.  
 APPROVED BY \_\_\_\_\_ R.W. ENGINEER



FED. ROAD DIST. NO.	STATE	FED. AID PROJ. NO.	APPROX. YEAR	SHEET NO.	TOTAL SHEETS
8	MONT.	334	R/W No.	3	3
		F334(12)	1334-12	7	8

STATE OF MONTANA  
 STATE HIGHWAY COMMISSION  
 PLAT SHOWING LAND  
 REQUIRED FOR RIGHT OF WAY  
 BIGHORN COUNTY

SCALE 1" = 400' MAP COMPLETED \_\_\_\_\_

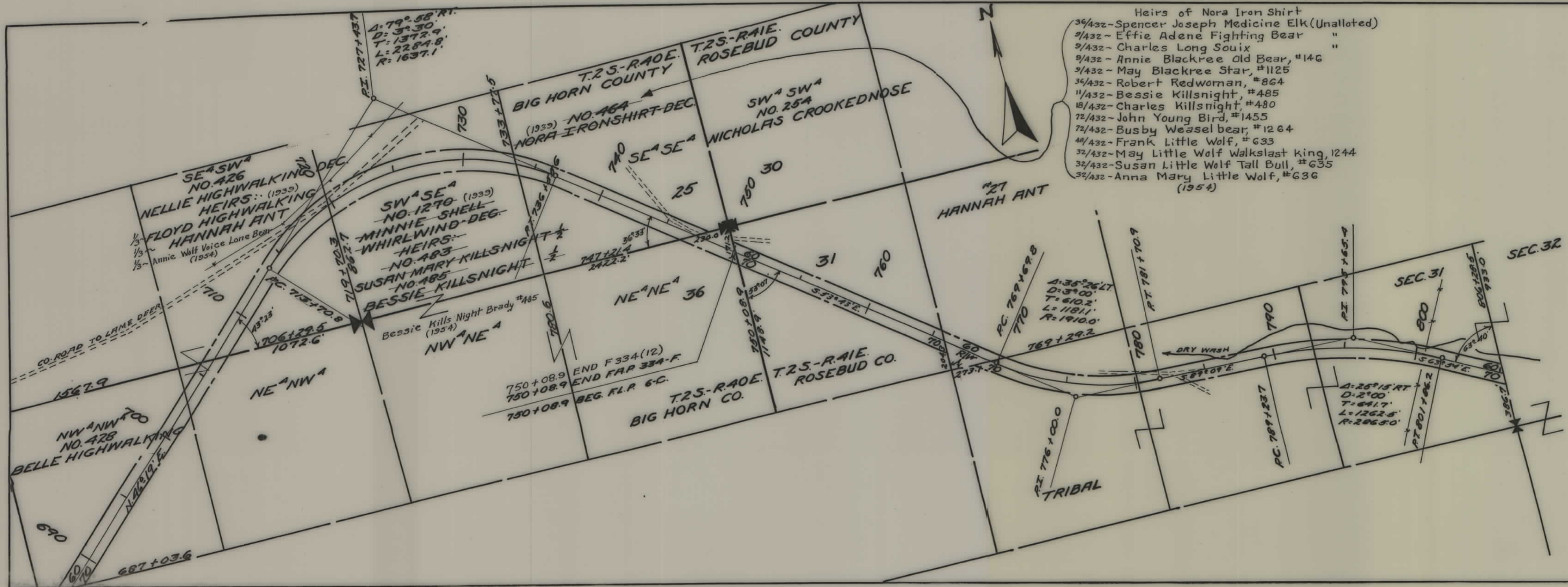
DESCRIPTIONS WRITTEN BY \_\_\_\_\_ DATE \_\_\_\_\_

DESCRIPTIONS CHECKED BY \_\_\_\_\_ DATE \_\_\_\_\_

APPROVED BY \_\_\_\_\_ PLANS DEPT.

APPROVED BY \_\_\_\_\_ R/W ENGINEER

Copyright Trusting Clark 1954  
 S. W. E. CO., B. T. - 4-32



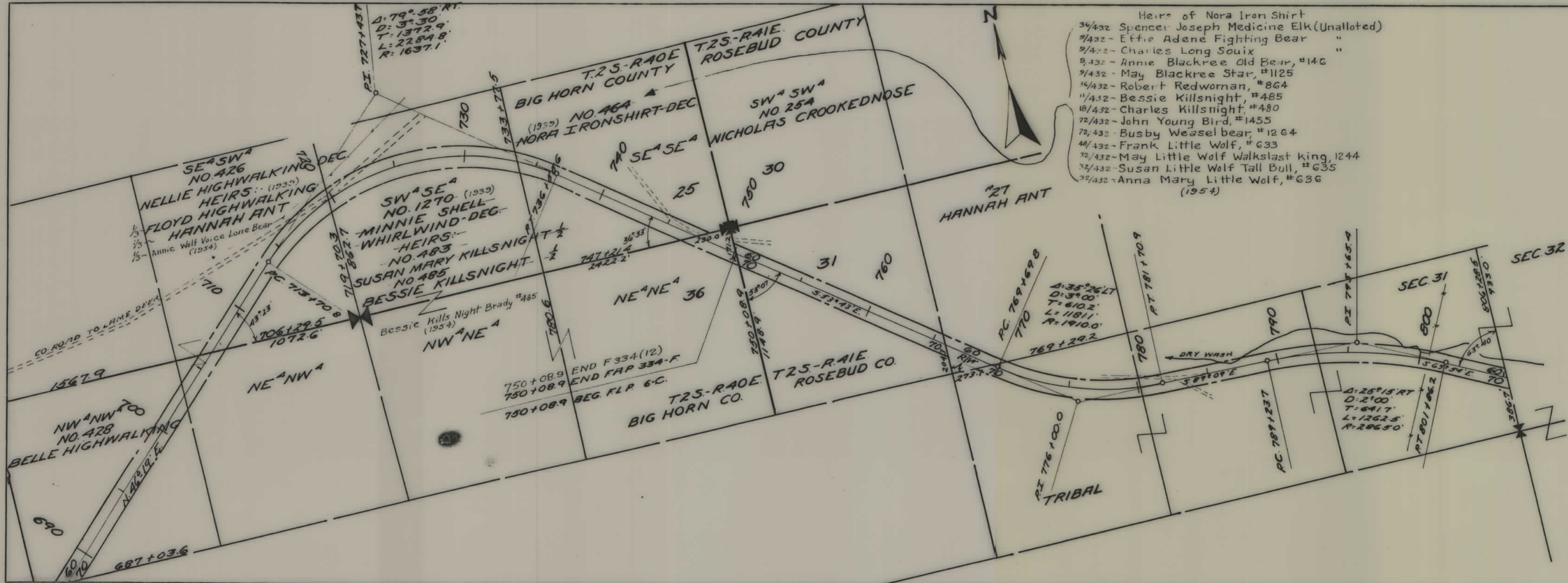
- Heirs of Nora Iron Shirt
- 36/432 - Spencer Joseph Medicine Elk (Unallotted)
  - 9/432 - Effie Adene Fighting Bear "
  - 9/432 - Charles Long Souix "
  - 9/432 - Annie Blackree Old Bear, #146
  - 9/432 - May Blackree Star, #1125
  - 36/432 - Robert Redwoman, #864
  - 11/432 - Bessie Killsnight, #485
  - 18/432 - Charles Killsnight, #480
  - 72/432 - John Young Bird, #1455
  - 72/432 - Busby Weasel bear, #1264
  - 48/432 - Frank Little Wolf, #633
  - 32/432 - May Little Wolf Walkslast king, 1244
  - 32/432 - Susan Little Wolf Tall Bull, #635
  - 32/432 - Anna Mary Little Wolf, #636 (1954)

FED. ROAD DIST. NO.	STATE	FED. AID PROJ. NO.	FISCAL YEAR	SHEET No.	TOTAL SHEETS
+	MONT.	FLP 6-C	RIW No.	+	7
8		F334(12)	1334-12	8	8

STATE OF MONTANA  
 STATE HIGHWAY COMMISSION  
 PLAT SHOWING LAND  
 REQUIRED FOR RIGHT OF WAY  
**ROSEBUD** COUNTY

SCALE 1" = 400' MAP COMPLETED \_\_\_\_\_  
 DESCRIPTIONS WRITTEN BY \_\_\_\_\_ DATE \_\_\_\_\_  
 DESCRIPTIONS CHECKED BY \_\_\_\_\_ DATE \_\_\_\_\_  
 APPROVED BY \_\_\_\_\_ PLANS DEPT.  
 APPROVED BY \_\_\_\_\_ R/W ENGINEER





- Heirs of Nora Iron Shirt
- 3/432 Spencer Joseph Medicine Elk (Unallotted)
  - 9/432 - Effie Adene Fighting Bear "
  - 9/432 - Charles Long Souix "
  - 9/432 - Annie Blackree Old Bear, #146
  - 9/432 - May Blackree Star, #1125
  - 16/432 - Robert Redwoman, #864
  - 11/432 - Bessie Killsnight, #485
  - 18/432 - Charles Killsnight, #480
  - 22/432 - John Young Bird, #1455
  - 22/432 - Busby Weasel bear, #1264
  - 48/432 - Frank Little Wolf, #633
  - 32/432 - May Little Wolf Walkslast king, 1244
  - 32/432 - Susan Little Wolf Tall Bull, #635
  - 32/432 - Anna Mary Little Wolf, #636 (1954)

FED. ROAD DIST. NO.	STATE	FED. AID PROJ. NO.	R/W No.	SHEET NO.	TOTAL SHEETS
8	MONT.	FLP 66		1	3
		F334(12)	1334-12	8	8

STATE OF MONTANA  
 STATE HIGHWAY COMMISSION  
 PLAT SHOWING LAND  
 REQUIRED FOR RIGHT OF WAY  
**ROSEBUD** COUNTY

SCALE 1" = 400' MAP COMPLETED \_\_\_\_\_ DATE \_\_\_\_\_  
 DESCRIPTIONS WRITTEN BY \_\_\_\_\_ DATE \_\_\_\_\_  
 DESCRIPTIONS CHECKED BY \_\_\_\_\_ DATE \_\_\_\_\_  
 APPROVED BY \_\_\_\_\_ PLANS DEPT \_\_\_\_\_  
 APPROVED BY \_\_\_\_\_ P.W. ENGINEER \_\_\_\_\_