

PLANS

NOT

TO

SCALE

FED. ROAD DIST. NO.	STATE	FED. AID PROJECT NUMBERS		STATE NO.	SHEET NO.	TOTAL SHEETS
		CONST. NO.	R/W NO.			
8	MONT.		F-353 (B)	1353-08	1	2

EAST GLACIER — BROWNING



W² SE⁴ SW⁴
GLACIER PARK HOTEL CO.
175 E. 4th ST. SW
ST. PAUL, MINN.

Δ = 2° 46' 33" LT.
D = 1' 00'
T = 138.8'
L = 277.6'
R = 5730.0'

R.R. STA. 201+61.8

R.T. 5+42.2 FAP 226
R.O.T. 00.2 BEG. WYE SURVEY

WYE P.C. 0+71.3

GREAT NORTHERN R.R. MAIN LINE

EXISTING R.W. R.R. R.W. 1

AGENT - SECURE PERMIT
TO CONST. DEPT. LT.
10' ± TO 20'

P.I. 18+39.4

N 08° 33' E
N 09° 51' 33" E

P.I. 596+63.2
Δ = 1° 18' 35" RT.

STA. 601+08.3 ROT. FHP 13 A/B
STA. 601+08.3 P.C. WYE LEFT
STA. 0+404 BEG. F-353 (B)

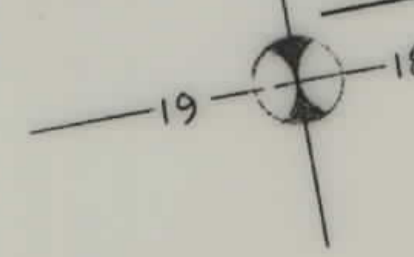
P.I. STA. 1423.2 Δ = 1728 LEFT
WYE P.I. STA. 1763.8

ROT. STA. 2415.7
WYE - RT. STA. 2418.7

NE⁴ SW⁴
GLACIER PARK HOTEL CO.
175 - E. 4th ST.
ST. PAUL. 1, MINN.

A' LINE
Δ = 47° 37' RT.
D = 3' 00'
T = 842.7
L = 1587.2
R = 1910.0'

0+17.5 BEG F-353 (B)
600+32.0 END F-260 (7)
0+17.5 BEG. FAP 353-D (1)
601+65.0 P.O.C. FHP 13-A, -B.



SE 4 SEC 18

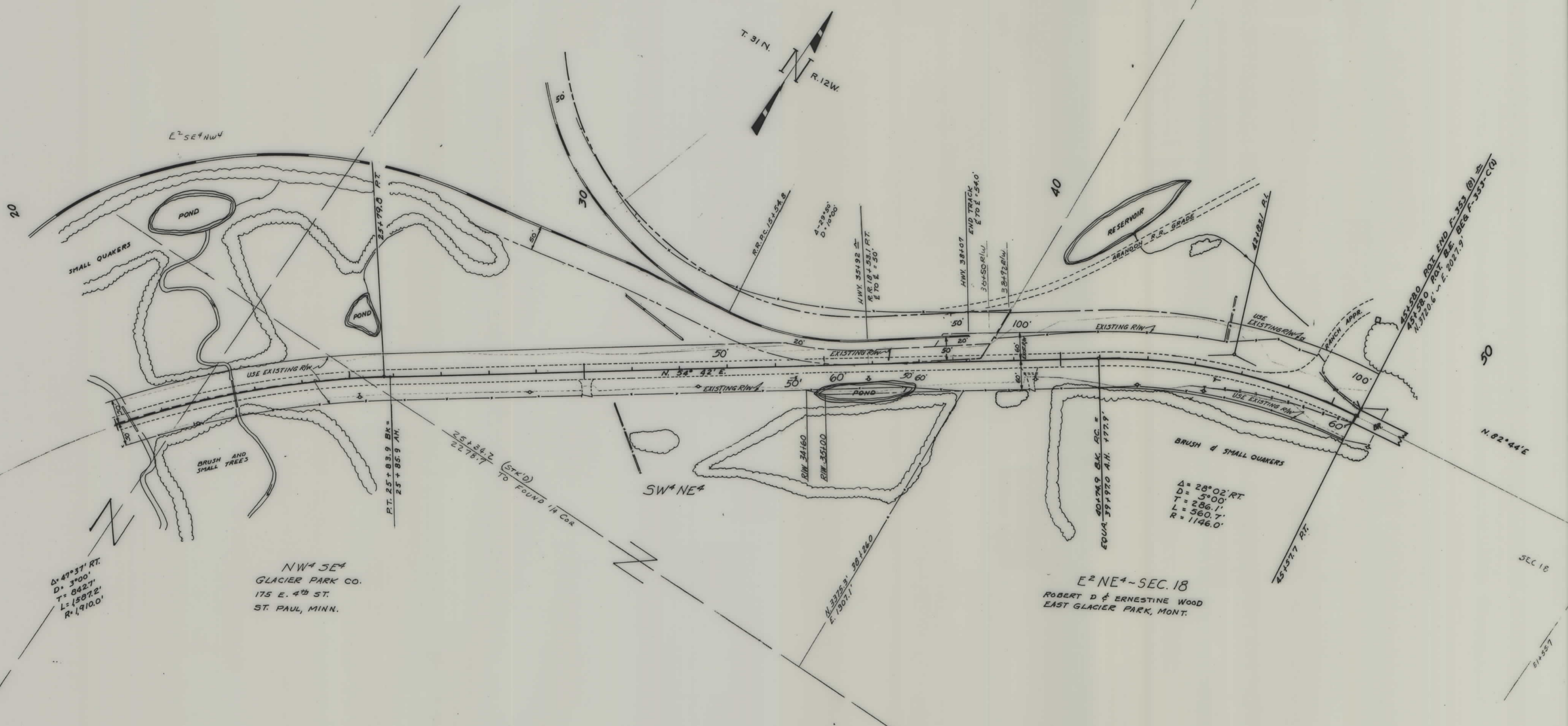
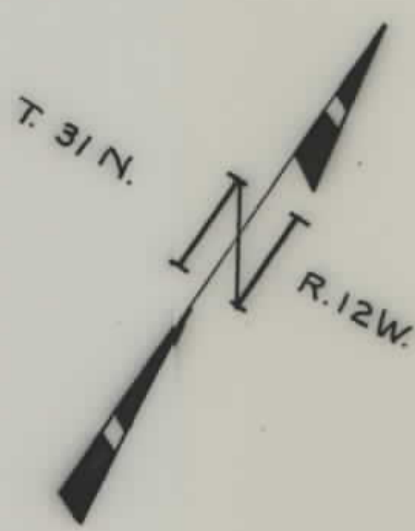
P.I. 25+83.7 BK.
25+85.7 AH.

B.P.R.-APPR-2/7/61

STATE OF MONTANA	
STATE HIGHWAY COMMISSION	
LAND REQUIRED FOR RIGHT OF WAY	
GLACIER	COUNTY
SCALE 1" = 100' MAP APPROVED BY _____	

MAPS MADE	6-29-60
MAPS REVISED	
MAPS FOR BUR. PUB. ROADS	2/7/60
MAPS COMPLETED	

FED. ROAD DIST. NO.	STATE	FED. AID PROJECT NUMBERS		STATE NO.	SHEET NO.	TOTAL SHEETS
		CONST. NO.	R/W NO.			
8	MONT.		F-353 (B)	1353-08	2	2



$\Delta = 47^{\circ} 37' \text{ RT.}$
 $D = 3^{\circ} 00'$
 $T = 842.7'$
 $L = 1587.2'$
 $R = 1910.0'$

NW⁴ SE⁴
 GLACIER PARK CO.
 175 E. 4th ST.
 ST. PAUL, MINN.

E² NE⁴ - SEC. 18
 ROBERT D & ERNESTINE WOOD
 EAST GLACIER PARK, MONT.

$\Delta = 28^{\circ} 02' \text{ RT.}$
 $D = 5^{\circ} 00'$
 $T = 286.1'$
 $L = 560.7'$
 $R = 1146.0'$

B.P.R.-APPR-2/7/61

STATE OF MONTANA	STATE HIGHWAY COMMISSION
LAND REQUIRED FOR RIGHT OF WAY	
GLACIER COUNTY	
MAPS MADE 10-29-60	SCALE 1" = 100' MAP APPROVED BY
MAPS REVISED	
MAPS FOR BUR. PUB. ROADS 8/7/60	
MAPS COMPLETED	