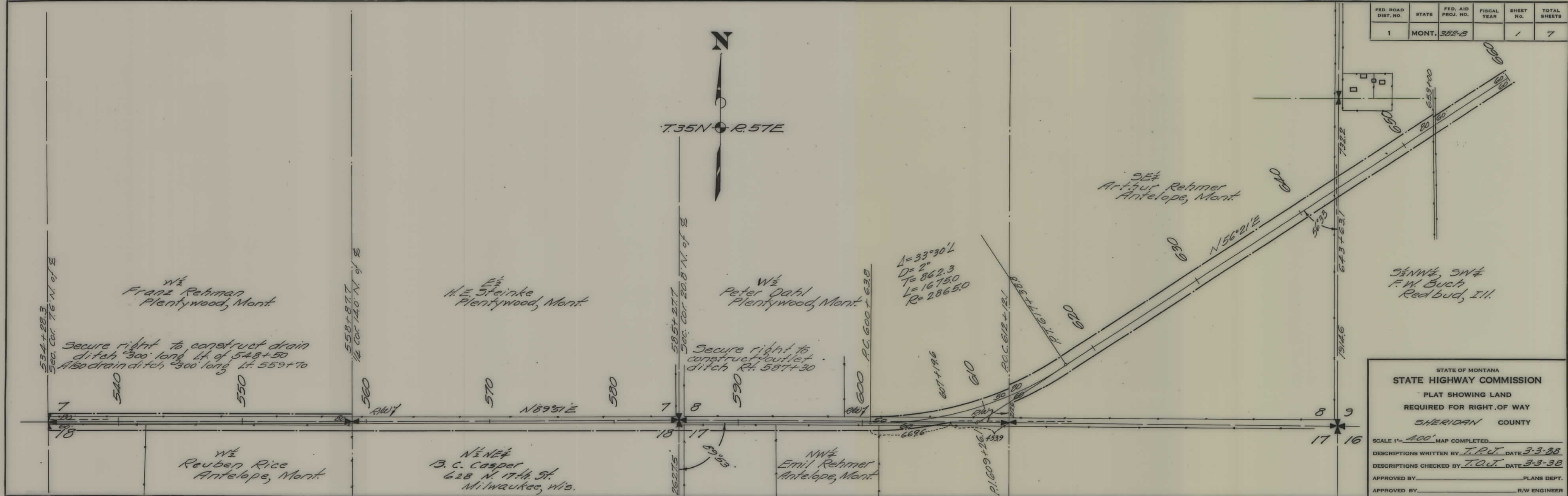


PLANS  
NOT  
TO  
SCALE

FED. ROAD DIST. NO.	STATE	FED. AID PROJ. NO.	FISCAL YEAR	SHEET NO.	TOTAL SHEETS
1	MONT.	382-B		1	7



STATE OF MONTANA  
STATE HIGHWAY COMMISSION

PLAT SHOWING LAND  
REQUIRED FOR RIGHT OF WAY  
SHERIDAN COUNTY

SCALE 1"=400' MAP COMPLETED

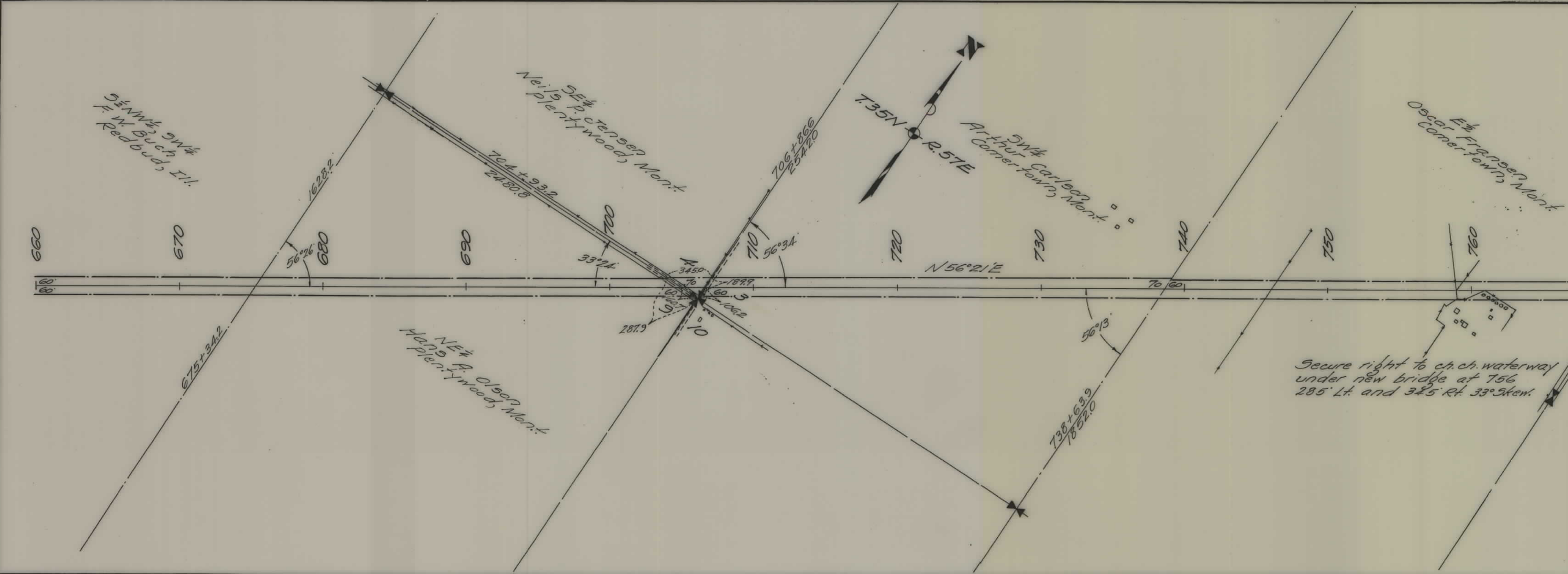
DESCRIPTIONS WRITTEN BY T.P.J. DATE 3-3-38

DESCRIPTIONS CHECKED BY T.O.J. DATE 3-3-38

APPROVED BY \_\_\_\_\_ PLANS DEPT.

APPROVED BY \_\_\_\_\_ R/W ENGINEER

FED. ROAD DIST. NO.	STATE	FED. AID PROJ. NO.	FISCAL YEAR	SHEET No.	TOTAL SHEETS
1	MONT.	382-B		2	7

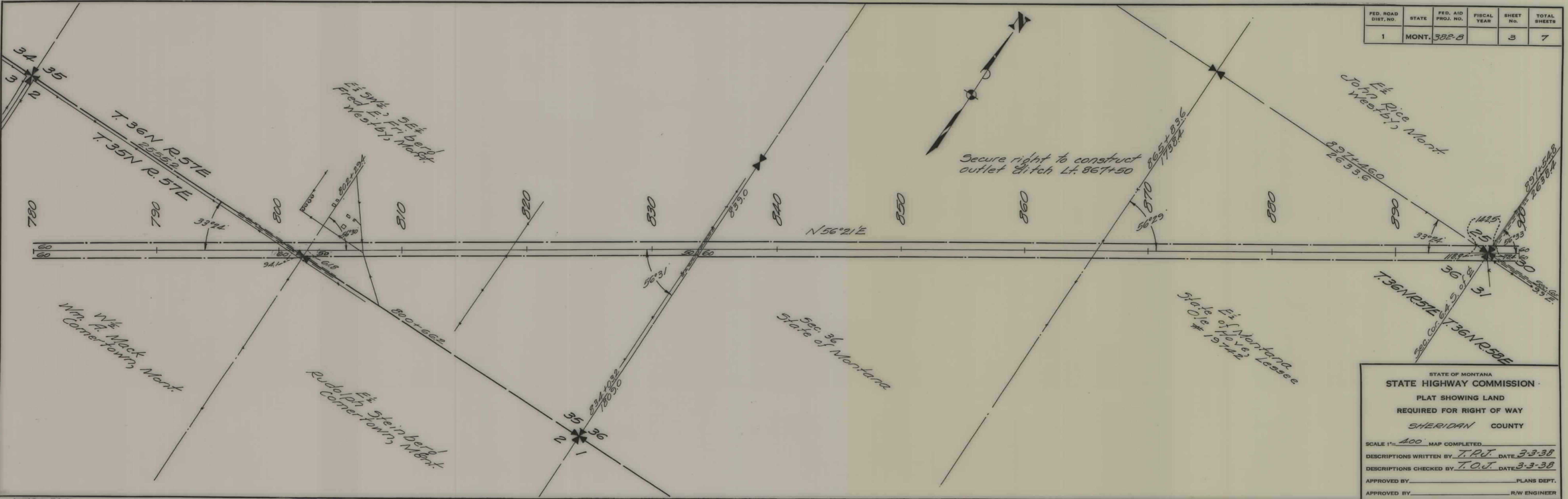


STATE OF MONTANA  
 STATE HIGHWAY COMMISSION  
 PLAT SHOWING LAND  
 REQUIRED FOR RIGHT OF WAY  
 SHERIDAN COUNTY

SCALE 1" = 400' MAP COMPLETED \_\_\_\_\_  
 DESCRIPTIONS WRITTEN BY T.P.J. DATE 3-3-38  
 DESCRIPTIONS CHECKED BY T.O.J. DATE 3-3-38  
 APPROVED BY \_\_\_\_\_ PLANS DEPT.  
 APPROVED BY \_\_\_\_\_ R/W ENGINEER

Imperial Trenching Club, 115  
 - E.V.E. CO., N.Y. -

FED. ROAD DIST. NO.	STATE	FED. AID PROJ. NO.	FISCAL YEAR	SHEET NO.	TOTAL SHEETS
1	MONT.	382-B		3	7



STATE OF MONTANA  
 STATE HIGHWAY COMMISSION  
 PLAT SHOWING LAND  
 REQUIRED FOR RIGHT OF WAY  
 SHERIDAN COUNTY

SCALE 1" = 400' MAP COMPLETED

DESCRIPTIONS WRITTEN BY T.P.J. DATE 3-3-38

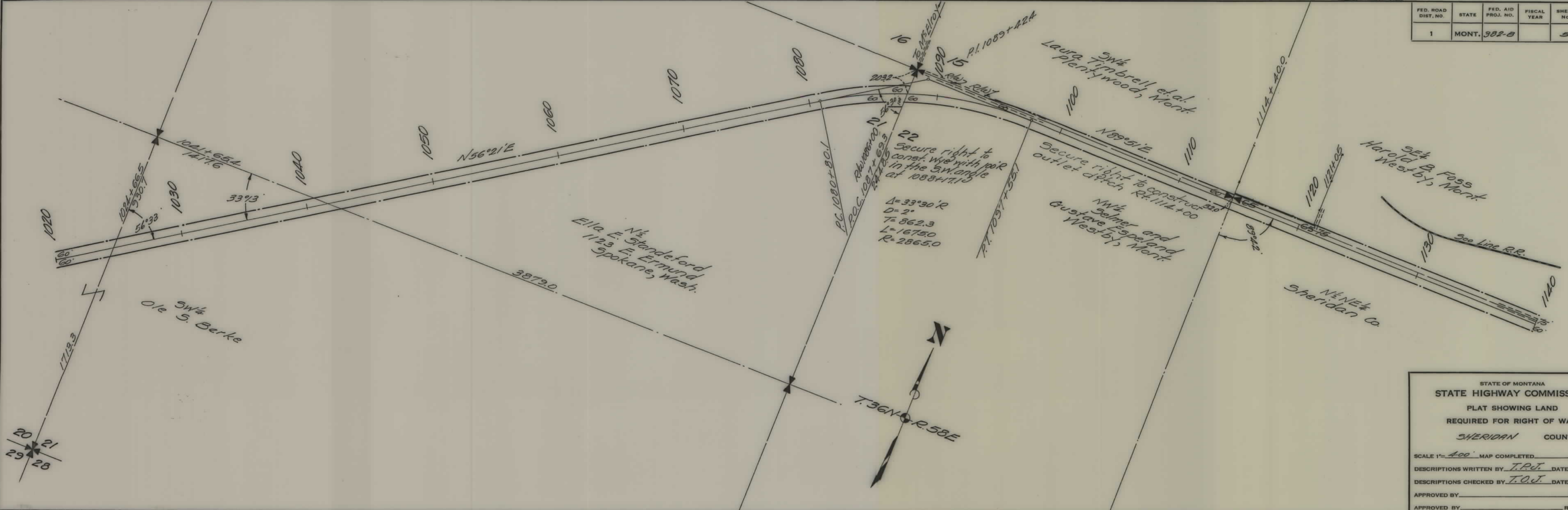
DESCRIPTIONS CHECKED BY T.O.J. DATE 3-3-38

APPROVED BY \_\_\_\_\_ PLANS DEPT.

APPROVED BY \_\_\_\_\_ R/W ENGINEER



FED. ROAD DIST. NO.	STATE	FED. AID PROJ. NO.	FISCAL YEAR	SHEET NO.	TOTAL SHEETS
1	MONT.	382-B		5	7



STATE OF MONTANA  
 STATE HIGHWAY COMMISSION  
 PLAT SHOWING LAND  
 REQUIRED FOR RIGHT OF WAY  
 SHERIDAN COUNTY

SCALE 1" = 400' MAP COMPLETED \_\_\_\_\_  
 DESCRIPTIONS WRITTEN BY T.P.J. DATE 3-3-38  
 DESCRIPTIONS CHECKED BY T.O.J. DATE 3-3-38  
 APPROVED BY \_\_\_\_\_ PLANS DEPT.  
 APPROVED BY \_\_\_\_\_ R/W ENGINEER



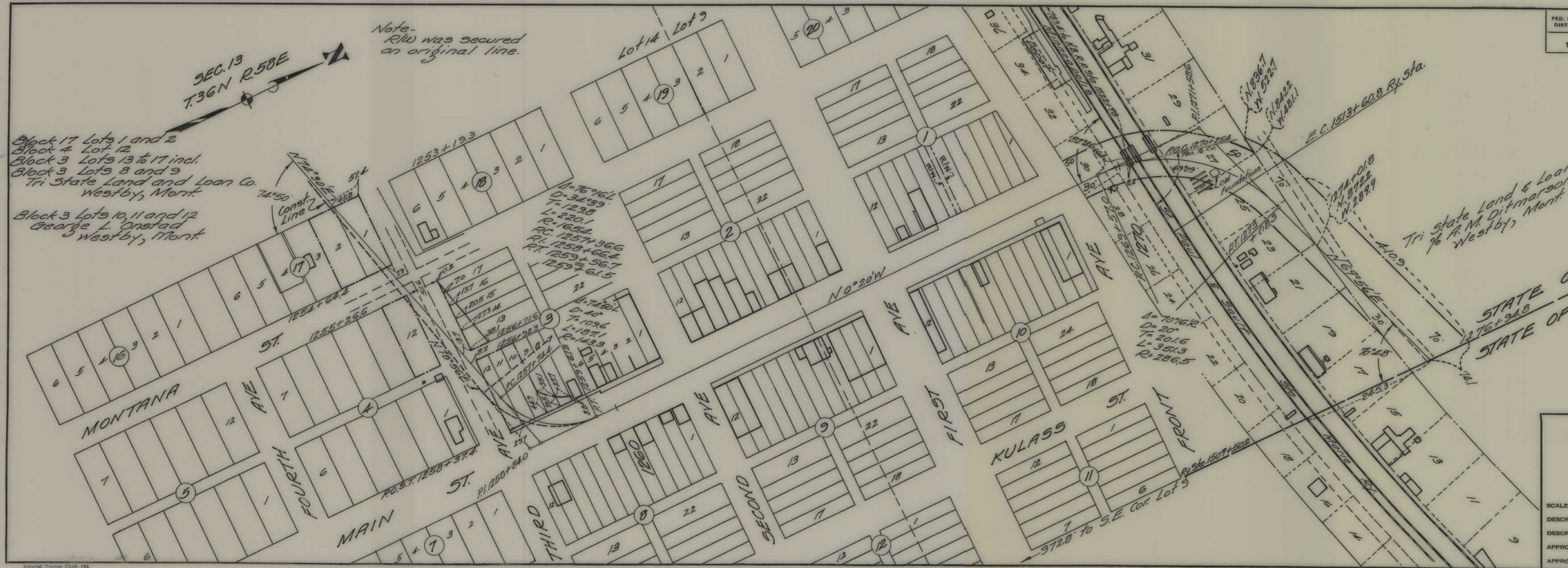
SEC. 13  
T. 36N R. 58E

Note -  
RW was secured  
on original line.

Block 17 Lots 1 and 2  
Block 4 Lot 12  
Block 3 Lots 13 to 17 incl.  
Block 3 Lots 8 and 9  
Tri State Land and Loan Co.  
Westby, Mont.

Block 3 Lots 10, 11 and 12  
George L. Onstad  
Westby, Mont.

FED. ROAD DIST. NO.	STATE	FED. AID PROJ. NO.	FISCAL YEAR	SHEET NO.	TOTAL SHEETS
1	MONT.	382-B		7	7



Tri State Land & Loan Co.  
% A. M. Ditmarson  
Westby, Mont.

STATE OF MONTANA  
STATE OF NORTH DAKOTA

STATE OF MONTANA  
STATE HIGHWAY COMMISSION  
PLAT SHOWING LAND  
REQUIRED FOR RIGHT OF WAY  
SHERIDAN COUNTY

SCALE 1" = 100' MAP COMPLETED \_\_\_\_\_  
 DESCRIPTIONS WRITTEN BY T.P.J. DATE 3-2-38  
 DESCRIPTIONS CHECKED BY T.O.J. DATE 3-2-38  
 APPROVED BY \_\_\_\_\_ PLANS DEPT.  
 APPROVED BY \_\_\_\_\_ R/W ENGINEER