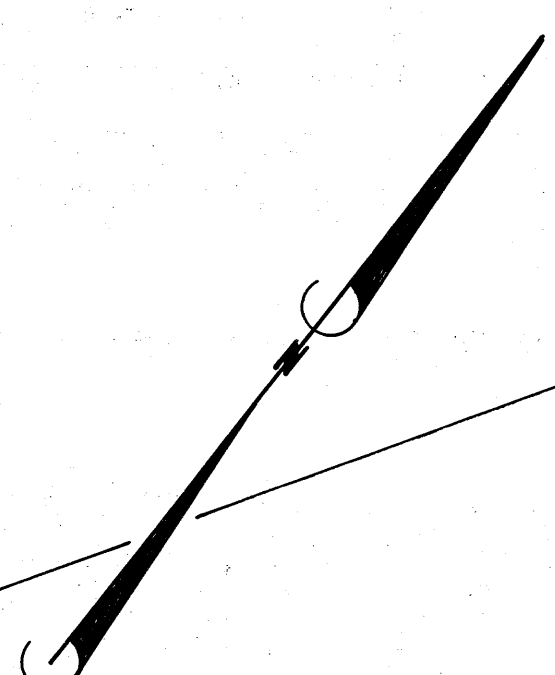




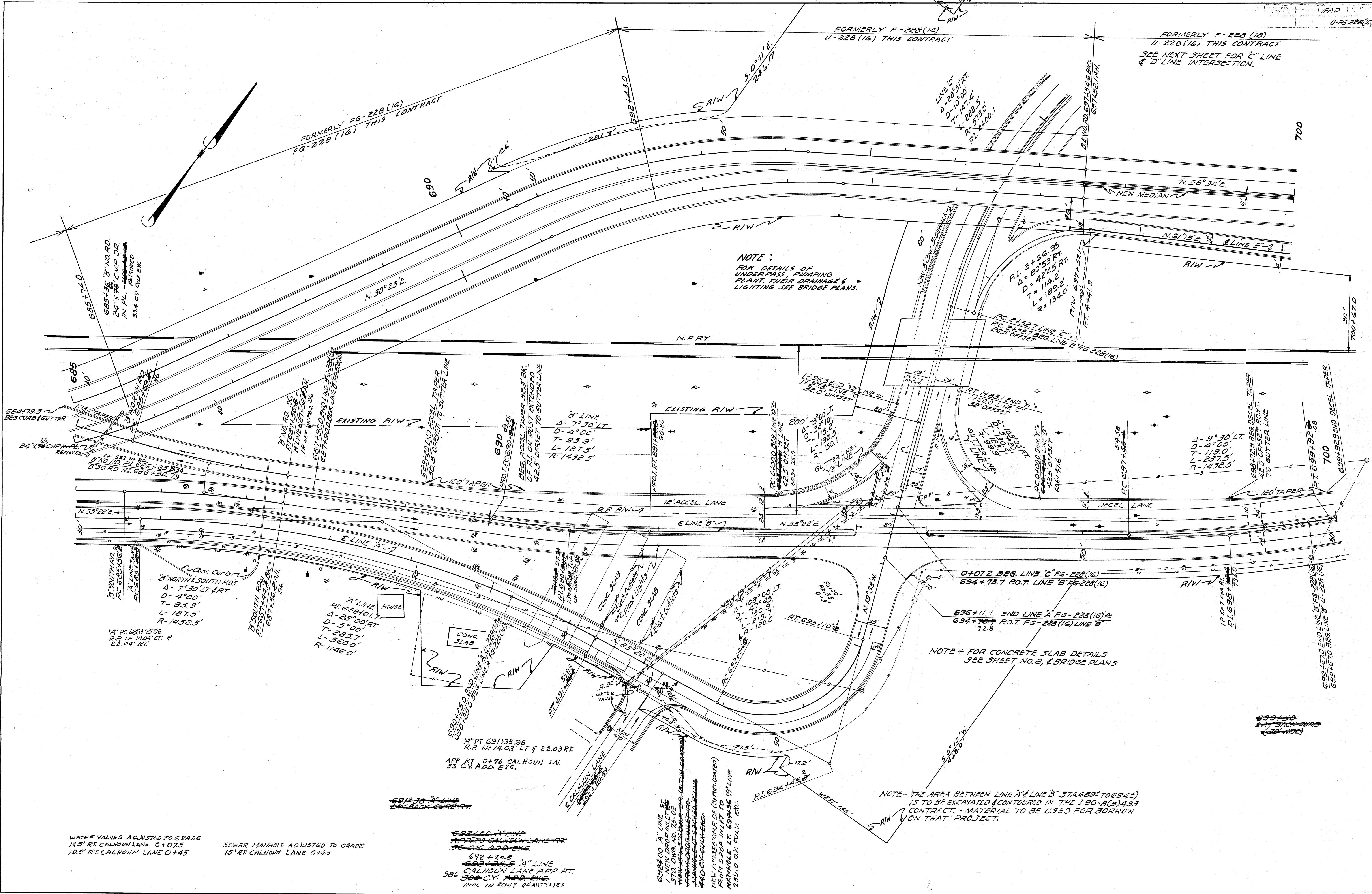
PLANS NOT TO
SCALE



FORMERLY FG-228 (14)
U-228 (16) THIS CONTRACT

FORMERLY F-228 (14)
U-228 (16) THIS CONTRACT

FORMERLY F-228 (15)
U-228 (16) THIS CONTRACT
SEE NEXT SHEET FOR 'C' LINE
& 'D' LINE INTERSECTION.



NOTE:
FOR DETAILS OF
UNDERPASS, PUMPING
PLANT, THEIR DRAINAGE &
LIGHTING SEE BRIDGE PLANS.

NOTE - FOR CONCRETE SLAB DETAILS
SEE SHEET NO. B, & BRIDGE PLANS

NOTE - THE AREA BETWEEN LINE 'A' & LINE 'B' STA 689± TO 694±
IS TO BE EXCAVATED & CONTOURED IN THE 190-B(9)433
CONTRACT. MATERIAL TO BE USED FOR BORROW
ON THAT PROJECT.

WATER VALVES ADJUSTED TO G GRADE
145' RT. CALHOUN LANE 0+07.5
100' RT. CALHOUN LANE 0+45

SEWER MANHOLE ADJUSTED TO GRADE
15' RT. CALHOUN LANE 0+69

692+00 'A' LINE
APP TO CALHOUN LANE AT
50 C.Y. ADD. EXC.
692+20.8
692+20.8 'A' LINE
CALHOUN LANE APP RT.
300 C.Y. ADD. EXC.
INCL IN ROW QUANTITIES

694+00 'A' LINE RT
1-NEW DROP INLET
572 DWS NO 75-02
W/NEW 18" DIA. 15' BTUM COVERED
W/NEW 18" DIA. 15' BTUM COVERED
440 C.Y. EXC. ENG.

NEW 15" DIA. 15' BTUM COVERED
FROM D.FOP INLET TO
MANHOLE LT. 694+36 'B' LINE
259.0 C.Y. CULK. EXC.

699+50
EAT BACK CURB
(60 WIDE)