

PLANS

NOT

TO

SCALE

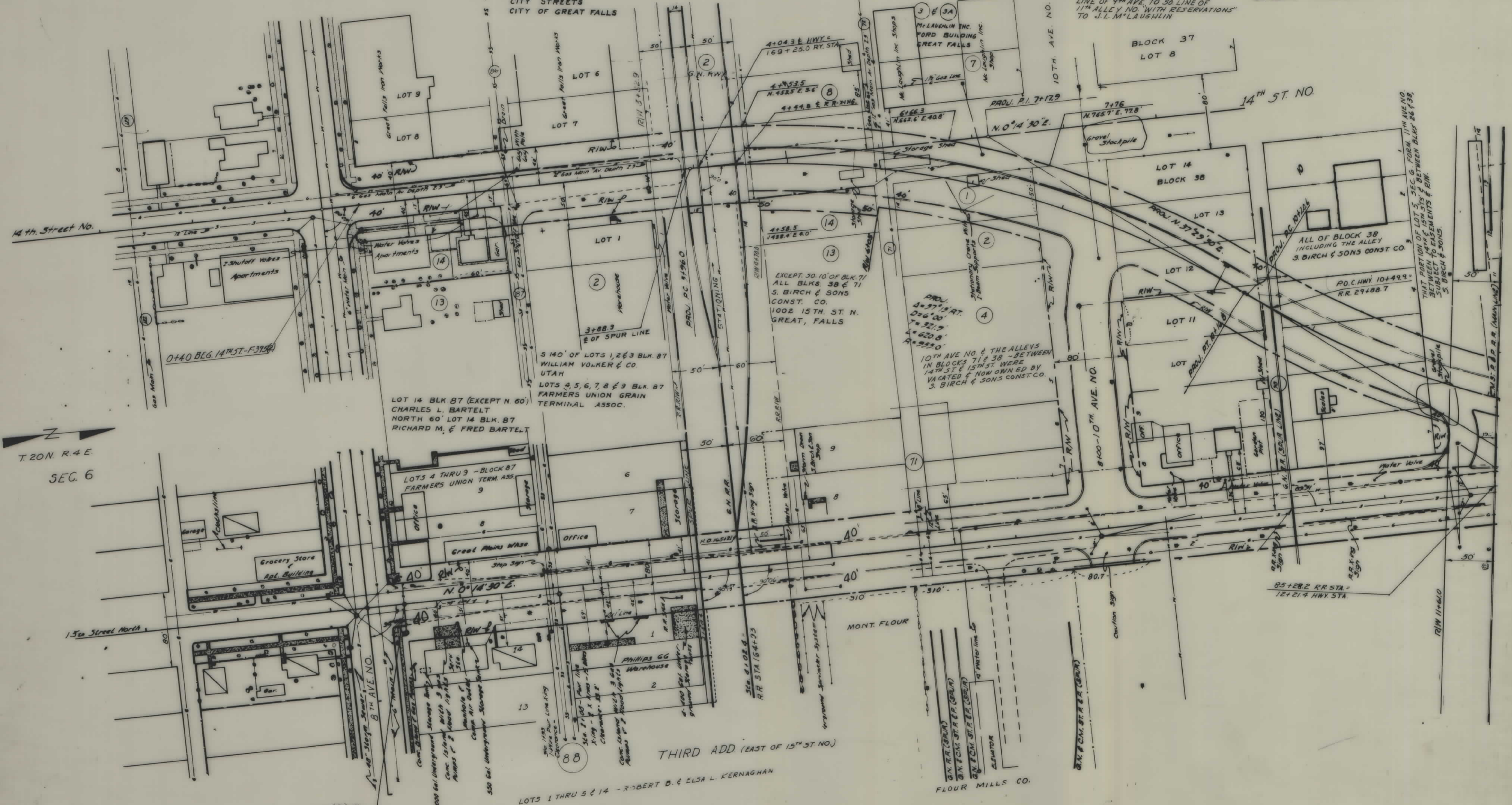
FED. ROAD DIST. NO.	STATE	FED. AID PROJECT NUMBERS		STATE NO.	SHEET NO.	TOTAL SHEETS
		CONST. NO.	R/W NO.			
8	MONT.	F-395(2)		1595-02	1	7

BLOCK 86
GREAT FALLS IRON WORKS

GREAT FALLS WATER POWER &
TOWNSITE CO'S FIRST ADDITION

ALL LOTS 1 THRU 7 & N. 140' OF LOTS 8 TO 12 BLK 72
J. L. McLAUGHLIN

GREAT FALLS STREETS



T. 20N. R. 4E.
SEC. 6

STA 0+40.0 BEG F-395(2) =
STA. 5+70.0 BEG U-395(1)

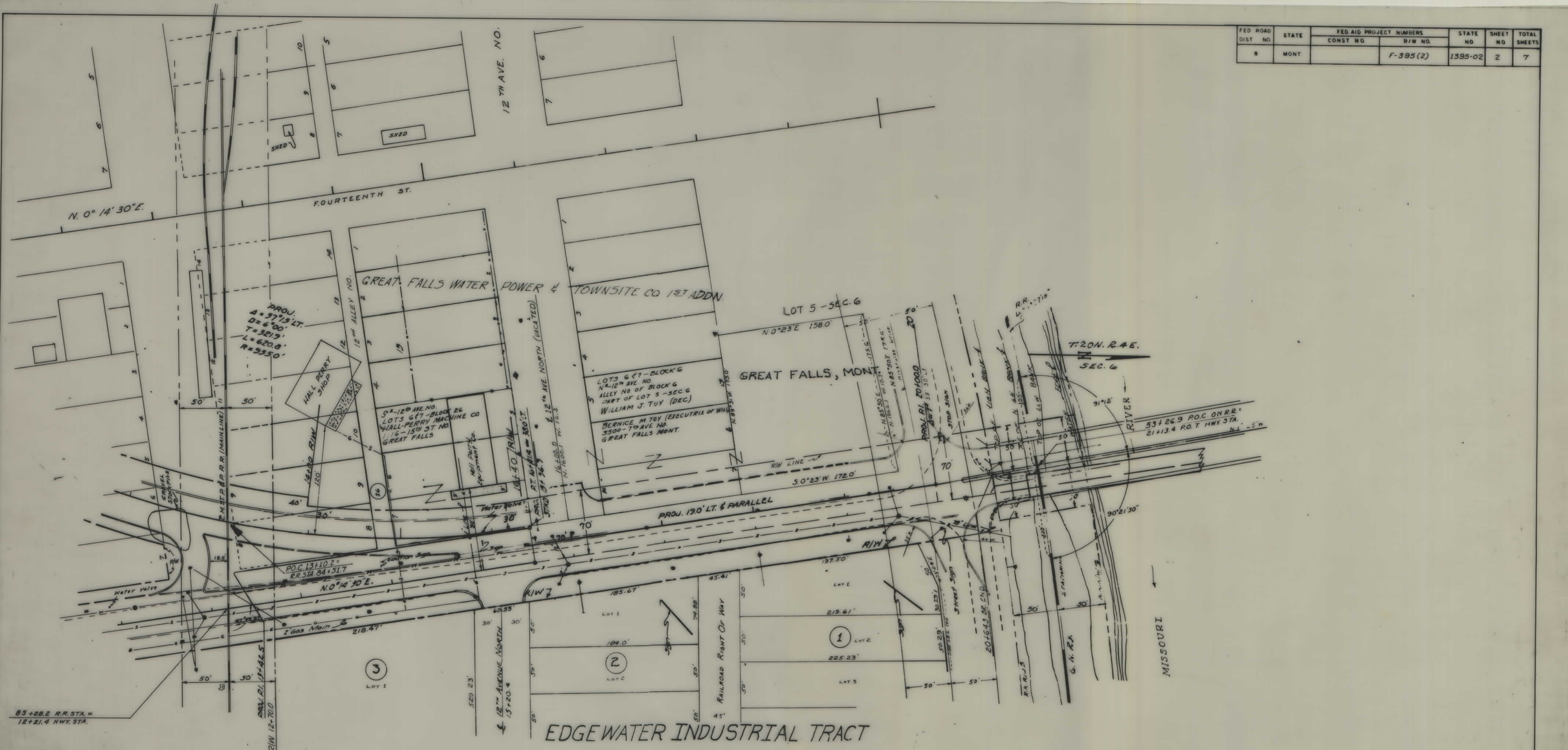
THIRD ADD. (EAST OF 15TH ST. NO.)
LOTS 1 THRU 5 & 14 - ROBERT B. & ELSA L. KERNAGHAN

FLOUR MILLS CO.

CONSTRUCTION LIMITS
TOP OF CUT
TOE OF FILL
MAP TRANS TO R/W
MAP REVISED
B.P.R. APPROVAL 6-24-59 - 10/14/61 - 2/5/63

STATE OF MONTANA
STATE HIGHWAY COMMISSION
LAND REQUIRED FOR RIGHT OF WAY
CASCADE COUNTY
SCALE 1" = 50' MAP COMPLETED

FED. ROAD DIST. NO.	STATE	FED. AID PROJECT NUMBERS		STATE NO.	SHEET NO.	TOTAL SHEETS
		CONST. NO.	R/W NO.			
8	MONT.		F-395(2)	1395-02	2	7



85+28.2 R.R. STA. =
12+21.4 HWY. STA.

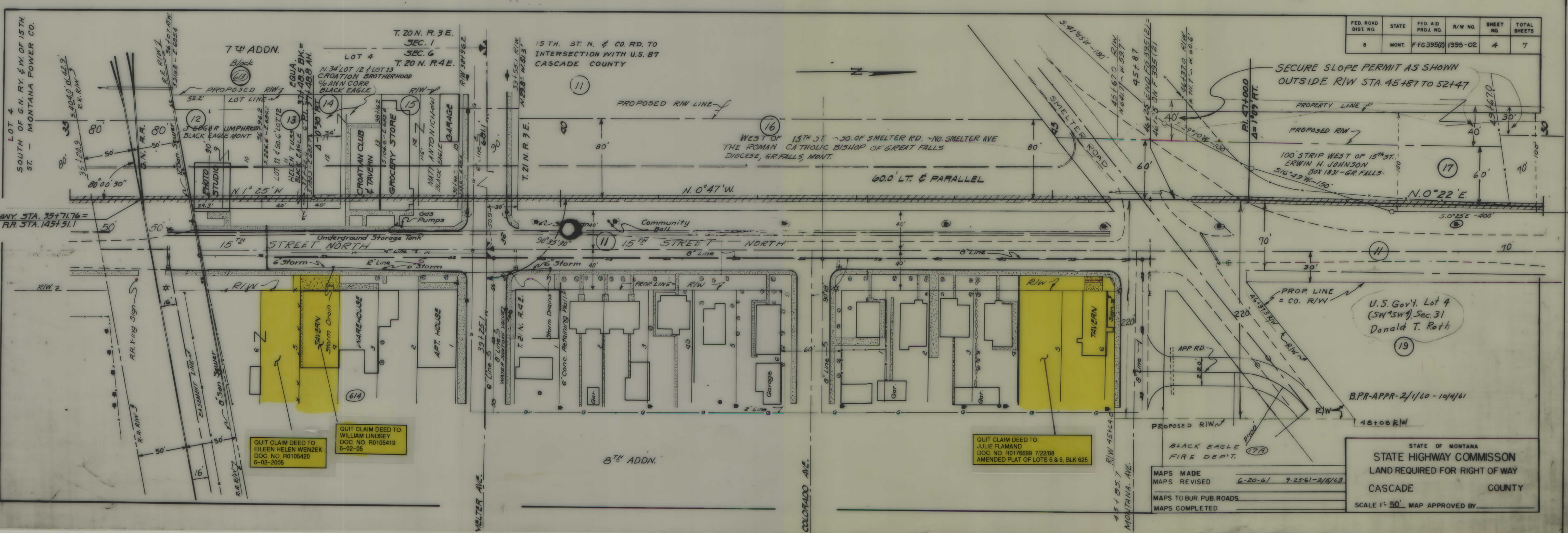
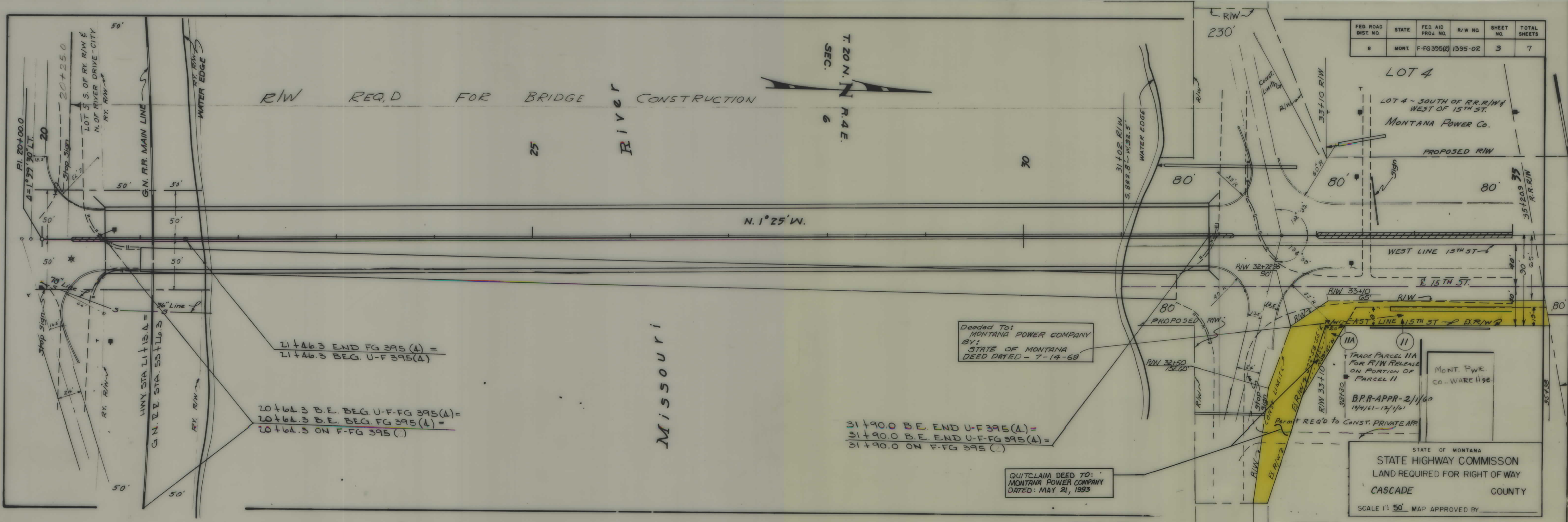
LOTS 8 & 9 - BLK. 26 - NO. OF C.M. ST. R.R. RY. R/W
RAY P. SMITH, 2517 CENTRAL AVE.
GREAT FALLS, MONT.

12TH ALLEY NO. BETWEEN LOTS 5 TO 10, BLK. 26
VACATED TO MONTANA POWER CO.

32-12TH AVE. NORTH OF BLK. 26
ALL LOTS 1 THRU 7 & LOTS 10 THRU 14 OF BLK. 26, NO. OF R.R. R/W.
HALL-PERRY MACHINERY CO.
1116-15TH ST. NO.
GREAT FALLS, MONT.

EDGEWATER INDUSTRIAL TRACT

CONSTRUCTION LIMITS TOP OF CUT _____ TOE OF FILL _____	STATE OF MONTANA STATE HIGHWAY COMMISSION LAND REQUIRED FOR RIGHT OF WAY CASCADE COUNTY SCALE 1"=50' MAP COMPLETED _____
MAP TRANS. TO R/W _____ MAP REVISED <u>8-23-61</u>	
B.P.R. APPROVAL <u>6-24-59-19M/61</u>	



21+46.3 END FG 395 (A) =
21+46.3 BEG. U-F-FG 395 (A)

20+64.3 B.E. BEG. U-F-FG 395 (A) =
20+64.3 B.E. BEG. FG 395 (A) =
20+64.3 ON F-FG 395 (A)

Deeded to:
MONTANA POWER COMPANY
BY:
STATE OF MONTANA
DEED DATED - 7-14-69

31+90.0 B.E. END U-F-FG 395 (A) =
31+90.0 B.E. END U-F-FG 395 (A) =
31+90.0 ON F-FG 395 (A)

QUITCLAIM DEED TO:
MONTANA POWER COMPANY
DATED: MAY 21, 1993

STATE OF MONTANA
STATE HIGHWAY COMMISSION
LAND REQUIRED FOR RIGHT OF WAY
CASCADE COUNTY
SCALE 1" = 50' MAP APPROVED BY

QUIT CLAIM DEED TO
EILEEN HELEN WENZKE
DOC NO. R0105420
6-02-2005

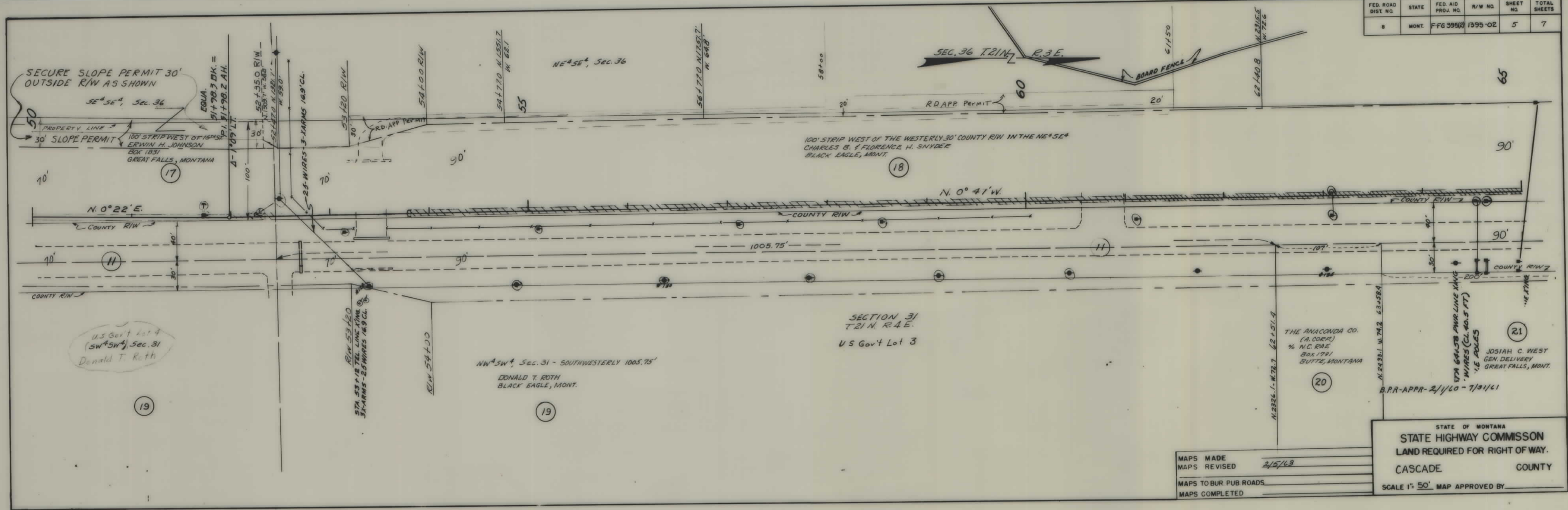
QUIT CLAIM DEED TO
WILLIAM LINDSEY
DOC NO. R0105419
6-02-05

QUIT CLAIM DEED TO
JULIE FLAMAND
DOC NO. R0176889 7/22/08
AMENDED PLAT OF LOTS 5 & 6, BLK 625

BLACK EAGLE
FIRE DEPT.
MAPS MADE
MAPS REVISED
MAPS TO BUR. PUB. ROADS
MAPS COMPLETED

STATE OF MONTANA
STATE HIGHWAY COMMISSION
LAND REQUIRED FOR RIGHT OF WAY
CASCADE COUNTY
SCALE 1" = 50' MAP APPROVED BY

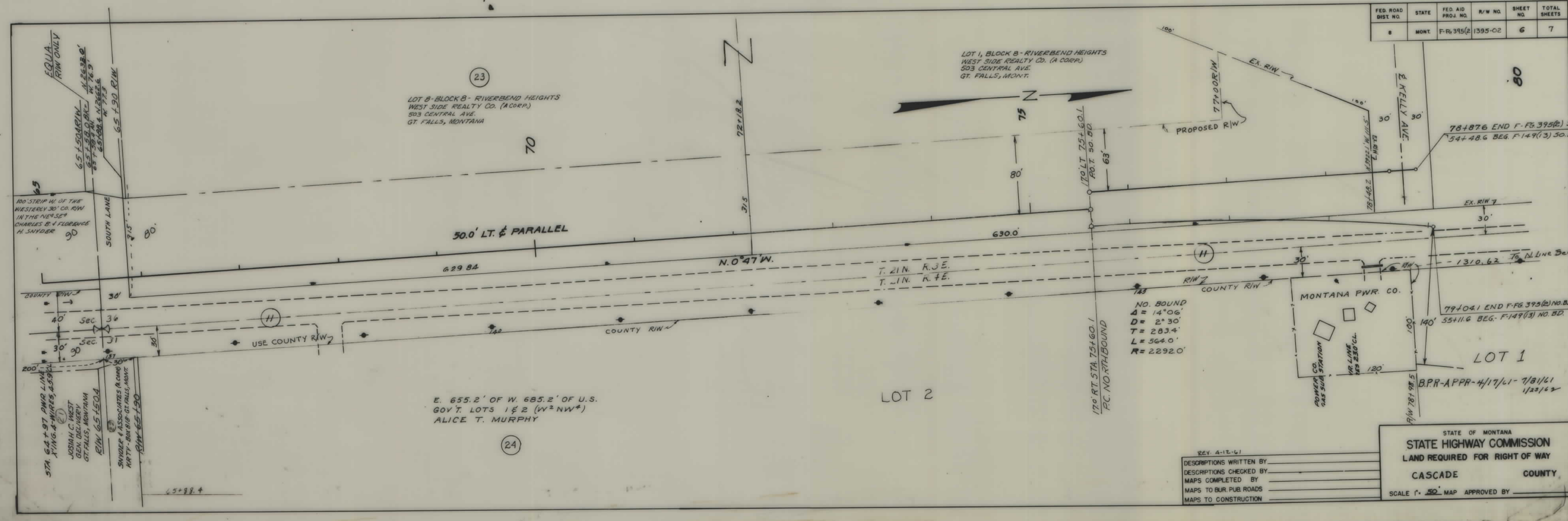
FED. ROAD DIST. NO.	STATE	FED. AID PROJ. NO.	R/W NO.	SHEET NO.	TOTAL SHEETS
8	MONT.	F-FG 395(2)	1395-02	5	7



MAPS MADE _____
 MAPS REVISED 2/5/43
 MAPS TO BUR. PUB. ROADS _____
 MAPS COMPLETED _____

STATE OF MONTANA
 STATE HIGHWAY COMMISSION
 LAND REQUIRED FOR RIGHT OF WAY.
 CASCADE COUNTY
 SCALE 1" = 50'. MAP APPROVED BY _____

FED. ROAD DIST. NO.	STATE	FED. AID PROJ. NO.	R/W NO.	SHEET NO.	TOTAL SHEETS
8	MONT.	F-FG 395(2)	1395-02	6	7



REV. 4-12-61
 DESCRIPTIONS WRITTEN BY _____
 DESCRIPTIONS CHECKED BY _____
 MAPS COMPLETED BY _____
 MAPS TO BUR. PUB. ROADS _____
 MAPS TO CONSTRUCTION _____

STATE OF MONTANA
 STATE HIGHWAY COMMISSION
 LAND REQUIRED FOR RIGHT OF WAY.
 CASCADE COUNTY
 SCALE 1" = 50'. MAP APPROVED BY _____

FED. ROAD DIST. NO.	STATE	FED. AID PROJECT NUMBERS		STATE NO.	SHEET NO.	TOTAL SHEETS
		CONST. NO.	R/W NO.			
8	MONT.		F-FG-395 (2)	1395-02	7	7



QUIT CLAIM DEED TO
WILLIAM LINDSEY
DOC. NO. R0105419
6-02-2005

QUIT CLAIM DEED TO
EILEEN HELEN WENZER
DOC. NO. R0105420
6-02-2005

BPR App 9/21/61

MAPS MADE	6-28-60	STATE OF MONTANA STATE HIGHWAY COMMISSION LAND REQUIRED FOR RIGHT OF WAY CASCADE COUNTY SCALE 1" = 50' MAP APPROVED BY
MAPS REVISED		
MAPS TO BUR. PUB. ROADS		
MAPS COMPLETED		